

# Hoshizaki America, Inc.

## Cubelet Icemaker/Dispenser

### Models

DCM-500BAH-OS

DCM-500BWH-OS



“A Superior Degree  
of Reliability”

[www.hoshizaki.com](http://www.hoshizaki.com)

## PARTS LIST



Number: 71212  
Issued: 11-26-2002  
Revised: 11-17-2010

# CONTENTS

Auxiliary Codes.....	3
Note About Ordering Parts .....	3
Material Abbreviations .....	4
A. Ice Dispenser Assembly .....	5
DCM-500BAH-OS .....	5
DCM-500BWH-OS .....	10
B. Refrigeration Circuit.....	15
DCM-500BAH-OS .....	15
DCM-500BWH-OS .....	19
C. Icemaking Unit .....	23
D. Water Circuit .....	24
E. Control Box Assembly.....	28
F. Apron Panel Assembly .....	33
G. Middle Front Frame Assembly .....	34
H. Shutter Assembly.....	35
J. Gear Motor Assembly (Agitator) .....	37
K. Gear Motor Assembly (Dispense).....	38
L. Bin Assembly .....	39
M. Frame Assembly .....	40
N. Label Location.....	42
P. Evaporator Assembly .....	44
Q. Bin Top Assembly .....	46
R. Accessories & Packaging .....	47

## Auxiliary Codes

### DCM-500BAH-OS

M-0	October 2002
N-0	December 2002
N-1	November 2003
P-0	December 2003
P-1	June 2004
Q-0	December 2004
Q-1	February 2005
R-0	December 2005
S-0	January 2007
S-1	November 2007
T-0	January 2008
T-0 (C)	March 2008
T-0 (E)	May 2008
T-1	October 2008
U-0	February 2009
U-1	August 2009
V-0	January 2010
V-2	May 2010
V-3	June 2010
V-4	October 2010
V-5	November 2010

### DCM-500BWH-OS

N-0	December 2002
N-1	September 2003
P-0	March 2004
Q-0	January 2005
Q-1	October 2005
R-0	January 2006
S-0	January 2007
S-1	December 2007
T-0	January 2008
U-0	January 2009
U-1	October 2009
V-0	February 2010
V-2	May 2010
V-3	June 2010
V-4	September 2010
V-5	November 2010
A-0	January 2011

## Auxiliary Code Breakdown

The auxiliary code is the first two characters in the serial number. The first character indicates the year. Years progress or regress in alphabetical order. The series runs from "A" through "V" and the letters "I" and "O" are skipped. The second character indicates significant part changes within a year. Base is "0" and this number advances for each change. In cases where there is a letter in parentheses, this designates the month. This is the last character in the serial number. The series runs from "(A)" through "(M)" and the letter "(I)" is skipped. This designation is only included when identifying a parts change within an auxiliary code.

## Note About Ordering Parts

Most assemblies cannot be ordered as complete units; parts in the assemblies generally must be ordered separately.

## Material Abbreviations

### ALUMINUM

AL = Aluminum

### COPPER

CU = Copper

### PLASTIC

ABS = Acrylonitrile -butadiene - styrene  
AC = Polyacetal  
EPP = Expanded Polypropylene  
EVA = Ethylene vinyl acetate  
PA = Polyamide = Nylon  
PC = Polycarbonate  
PE = Polyethylene  
PES = Polyester  
PETP = Polyethylene terephthalate = Tetlon  
PP = Polypropylene  
PS = Polystyrene  
PTFE = Polytetrafluoroethylene = Teflon  
PUR = Polyurethane  
PVC = Polyvinyl chloride

### RUBBER

EPDM = EP rubber  
EPH = Epichlorohydrin  
NBR = Nitrile butadiene rubber  
NP = Neoprene  
NR = Natural rubber  
SI.R = Silicone rubber  
SY.R = Synthetic rubber  
VN = Vinyl Nitrile

### STEEL

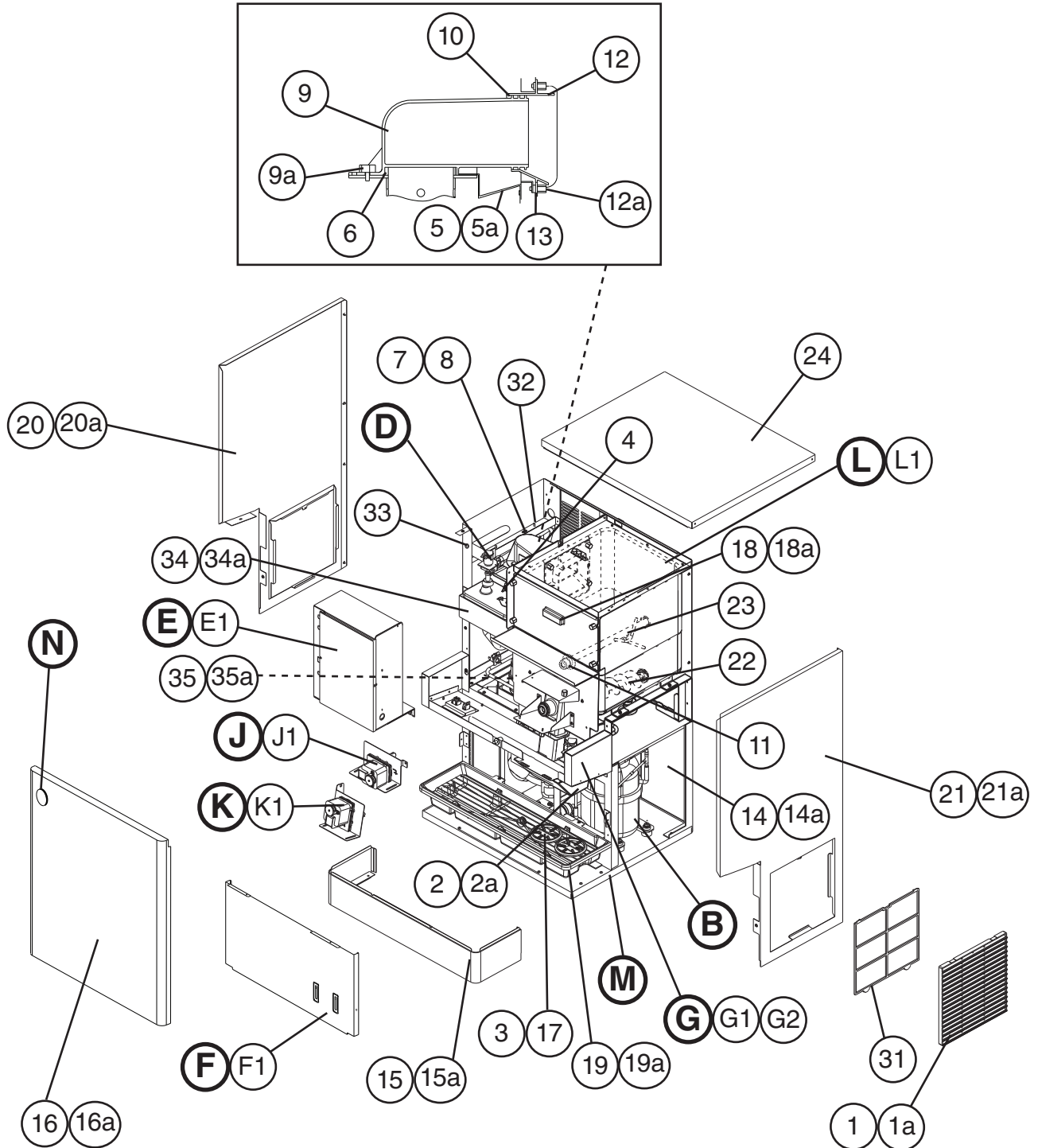
GS = Galvanized steel  
PAS = Primed steel  
PS = Plated steel  
SS = Stainless steel

# A. Ice Dispenser Assembly

1/2

DCM-500BAH-OS

M-0 to V-5

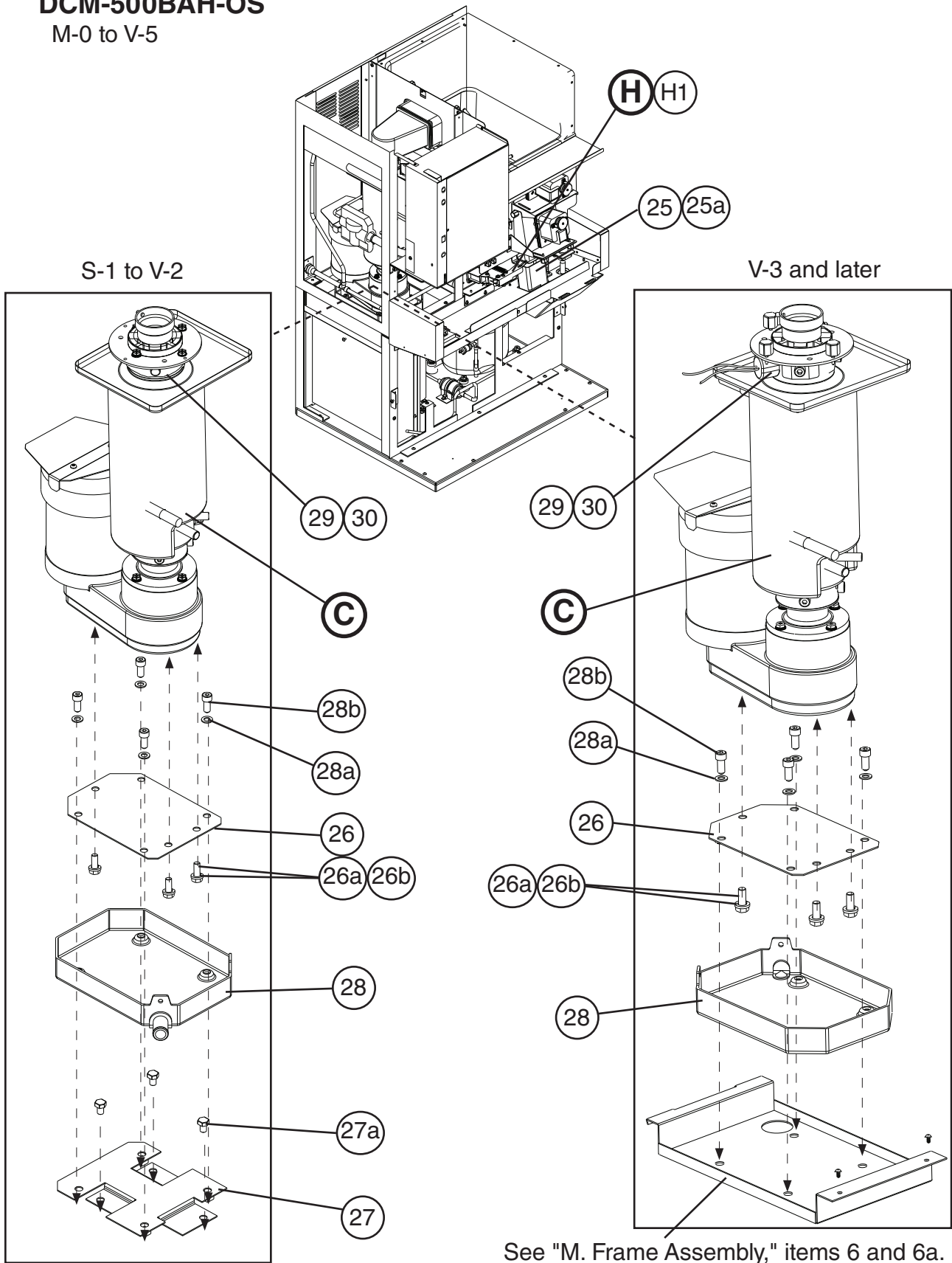


# A. Ice Dispenser Assembly

2/2

DCM-500BAH-OS

M-0 to V-5



See "M. Frame Assembly," items 6 and 6a.

Title: **A. Ice Dispenser Assembly** Model: **DCM-500BAH-OS**

Index No.	Description	Material or Model Number	Part Number	Required Number										
				M-0 to P-1	Q-0 to Q-1(G)	Q-1(H)	R-0 to S-0	S-1 to U-0	U-1 to V-0	V-2	V-3	V-4	V-5	
B	Refrigeration Circuit		227494A02	1	1	1	1	1	1	1	-			
			2A5916A01							1	1	1	-	
			2A5916A02											1
C	Icemaking Unit		3A0623A03	1	1	1	1	-						
			3A0623A04					1	1	1	1	1	1	1
D	Water Circuit		2A0395A02	1	1	1	1	-						
			2A0395A03					1	1	1	-			
			2A5455A01								1	1	1	
E	Control Box Assembly		2A2615A01	1	1	1	-							
			2A2615A03				1	-						
			2A2615A05					1	-					
			2A2615A07							1	-			
			2A2615A09								1	-		
			2A5460A03									1	1	1
E1	Truss Head Screw	4x8	7C31-0408	3	3	3	3	3	3	3	3	-		
	FT Screw	4x8, SS	7F32-0408									4	4	
F	Apron Panel Assembly		3A2502A01	1	-									
			3A3618A01		1	1	1	1	1	1	1	1	1	1
F1	Truss Head Screw	4x8, SS	7C32-0408	4	4	4	4	4	4	4	4	4	4	
G	Middle Front Frame Assembly		2A2603A01	1	1	1	1	1	-					
			2A2603A02						1	1	1	1	1	
G1	Taper Collar	SS	4H0171-01	2	2	2	2	2	2	2	2	2	2	
G2	Flat Head Screw	4x12, SS	7C22-0412	2	2	2	2	2	2	2	2	2	2	
H	Shutter Assembly		2A0410A01	1	1	1	1	1	1	1	1	1	1	
H1	Truss Head Screw	4x8, SS	7C32-0408	2	2	2	2	2	2	2	-			
	FT Screw		7F32-0408								2	2	2	
J	Gear Motor Assembly (Agitator)		4A0620A01	1	1	1	1	1	1	1	1	1	1	
J1	Thumbscrew		415949G12	2	2	2	2	2	2	2	2	2	2	
K	Gear Motor Assembly (Dispense)		4A0622A01	1	1	1	1	1	1	1	1	1	1	
K1	Thumbscrew		415949G12	2	2	2	2	2	2	2	2	2	2	
L	Bin Assembly		2A0413A01	1	1	1	1	1	1	1	-			
			2A0413A02									1	1	1
L1	Truss Head Screw	4x12, SS	7C32-0412	2	2	2	2	2	2	2	-			
	FT Screw	4x8, SS	7F32-0408								2	2	2	
M	Frame Assembly		2A0388A01	1	1	1	1	1	1	1	-			
			2A5324A02									1	1	1
N	Label Location		2A2604A01	1	1	1	1	-						
			2A2604A03					1	1	1	1	1	1	1
1	Louwer		103121-03	2	2	2	2	2	2	2	2	2	2	
1a	Tapping Screw-Black	4x8	433954-01	2	2	2	2	2	2	2	2	2	2	
2	Spout Cover		215773-01	1	1	1	1	1	1	1	1	1	1	
2a	Thumbscrew		415949G08	2	2	2	2	2	2	2	2	2	2	
3	Cup Guide		326702-01	2	2	2	2	2	2	2	2	2	2	
4	Bushing	SR-30-1	420472-03	1	1	1	1	1	1	-				
	Cable Tie	CV-150	8911-0150							1	1	1	1	

Title: <b>A. Ice Dispenser Assembly</b> Model: <b>DCM-500BAH-OS</b>													
Index No.	Description	Material or Model Number	Part Number	Required Number									
				M-0 to P-1	Q-0 to Q-1(G)	Q-1(H)	R-0 to S-0	S-1 to U-0	U-1 to V-0	V-2	V-3	V-4	V-5
5	Evaporator Bracket	SS	3A0360-01	1	1	1	1	1	1	1	1	1	1
5a	Hex Head Bolt w/Washer	5x10, SS	7B0230510	2	2	2	2	2	2	2	2	2	2
6	Packing		427151-02	1	1	1	1	1	1	1	1	1	1
7	Square Washer		433537-02	1	1	1	1	1	1	1	1	1	1
8	Ground Screw		433304-02	1	1	1	1	1	1	1	1	1	1
9	Spout		103329G01	1	1	1	1	1	1	1	1	1	1
9a	Thumbscrew		415949G11	3	3	3	3	3	3	3	3	3	3
10	Packing (A) Spout		427195-01	1	1	1	1	1	1	1	1	1	1
11	Gasket		429758-01	2	2	2	2	2	2	2	2	2	2
12	Spout (B)		208807-01	1	1	1	1	1	1	1	1	1	1
12a	Thumbscrew		415949G11	4	4	4	4	4	4	4	4	4	4
13	Packing (B) Spout		427196-01	1	1	1	1	1	1	1	1	1	1
14	Rear Panel	GS	2A0405-01	1	1	1	1	1	1	1	-		
			2A5403-01									1	1
14a	Truss Head Screw	4x8, SS	7C32-0408	4	4	4	4	4	4	4	-		
	FT Screw		7F32-0408									4	4
15	Panel (Lo)	SS	2A0699G01	1	1	1	1	1	1	1	1	1	1
15a	FT Screw	4x8, SS	7F32-0408	6	6	6	6	6	6	6	6	6	6
16	Front Panel (A)		3A2853G01	1	1	1	1	1	-				
			2A2891-01							1	1	1	1
16a	T2 Screw	4x8, SS	7P32-0408	1	1	1	1	1	-				
	FT Screw	4x8, SS	7F32-0408							1	1	1	1
17	Grille		2A0827G01	1	1	1	1	1	1	1	1	1	1
18	Bin Cover		2A0880A02	1	1	1	1	1	1	1	1	1	1
18a	Thumbscrew		415949G12	4	4	4	4	4	4	4	4	4	4
19	Drip Tray		2A2591G01	1	1	1	1	1	1	1	1	1	1
19a	Truss Head Screw	4x8, SS	7C32-0408	4	4	4	4	4	4	4	-		
	FT Screw		7F32-0408									4	4
20	Side Panel (L)	SS	2A2616-01	1	1	1	1	1	1	1	-		
			2A6144-01									1	1
20a	Truss Head Screw	4x8, SS	7C32-0408	6	6	6	6	6	6	6	-		
	FT Screw		7F32-0408									6	6
21	Side Panel (R)	SS	2A2617-01	1	1	1	1	1	1	1	-		
			2A6143-02									1	1
21a	Truss Head Screw	4x8, SS	7C32-0408	6	6	6	6	6	6	6	-		
	FT Screw		7F32-0408									6	6
22	Auger (Dispense)	SS	339192G01	1	1	1	1	1	1	1	1	1	1
23	Agitator	SS	3A0895G01	1	1	1	1	1	1	1	1	1	1
24	Top Panel	SS	3A2514G01	1	1	1	1	1	1	1	1	1	1
25	Ice Chute		4A2204-01	1	1	1	1	1	1	1	1	1	1
25a	Thumbscrew		415949G08	2	2	2	2	2	2	2	2	2	2
26	Gear Motor Bracket	SS	4A4308-01						1	1	1	1	1
26a	Hex Head Bolt	8x12, SS	7B02-0812						3	3	3	3	3
26b	Split Lock Washer	M8, SS	7L22-0800						3	3	3	3	3
27	Drain Pan Bracket Assembly	SS	4A4315G01						1	1	1	See "M. Frame Assembly," items 6 and 6a	
27a	Hex Head Bolt	8x12, SS	7B02-0812						3	3	3		



Title: **A. Ice Dispenser Assembly** Model: **DCM-500BAH-OS**

Index No.	Description	Material or Model Number	Part Number	Required Number											
				M-0 to P-1	Q-0 to Q-1(G)	Q-1(H)	R-0 to S-0	S-1 to U-0	U-1 to V-0	V-2	V-3	V-4	V-5		
28	Drain Pan Assembly		323765G02	See "D. Water Circuit," item 40.					-						
			4A4354G01					1	1	1	-				
			4A4354G02								1	1	1		
28a	Flat Washer	M8, SS	7W22-0800					4	4	4	4	4	4		
28b	Allen Head Cap Screw	8x20, SS	7S12-0820					4	4	4	4	4	4		
29	Heater (includes item 30)		4A2292-01		1	1	1	1	1	1	1	1	1		
30	Spring		4A2292F01		1	1	1	1	1	1	1	1	1		
31	Air Filter		208283G03	1	1	1	1	1	1	1	1	1	1		
32	Wire Saddle		4A0338-01								2	2	2		
33	Bushing	OCB-500	428394-02								1	1	1		
34	Reservoir Bracket		3A5675-01								1	1	1		
34a	FT Screw		7F32-0408								2	2	2		
35	Gear Motor Cover		3A1058-01	1	1	1	1	See "C. Icemaking Unit."							
35a	Truss Head Screw	4x8, SS	7C32-0408	2	2	2	2								

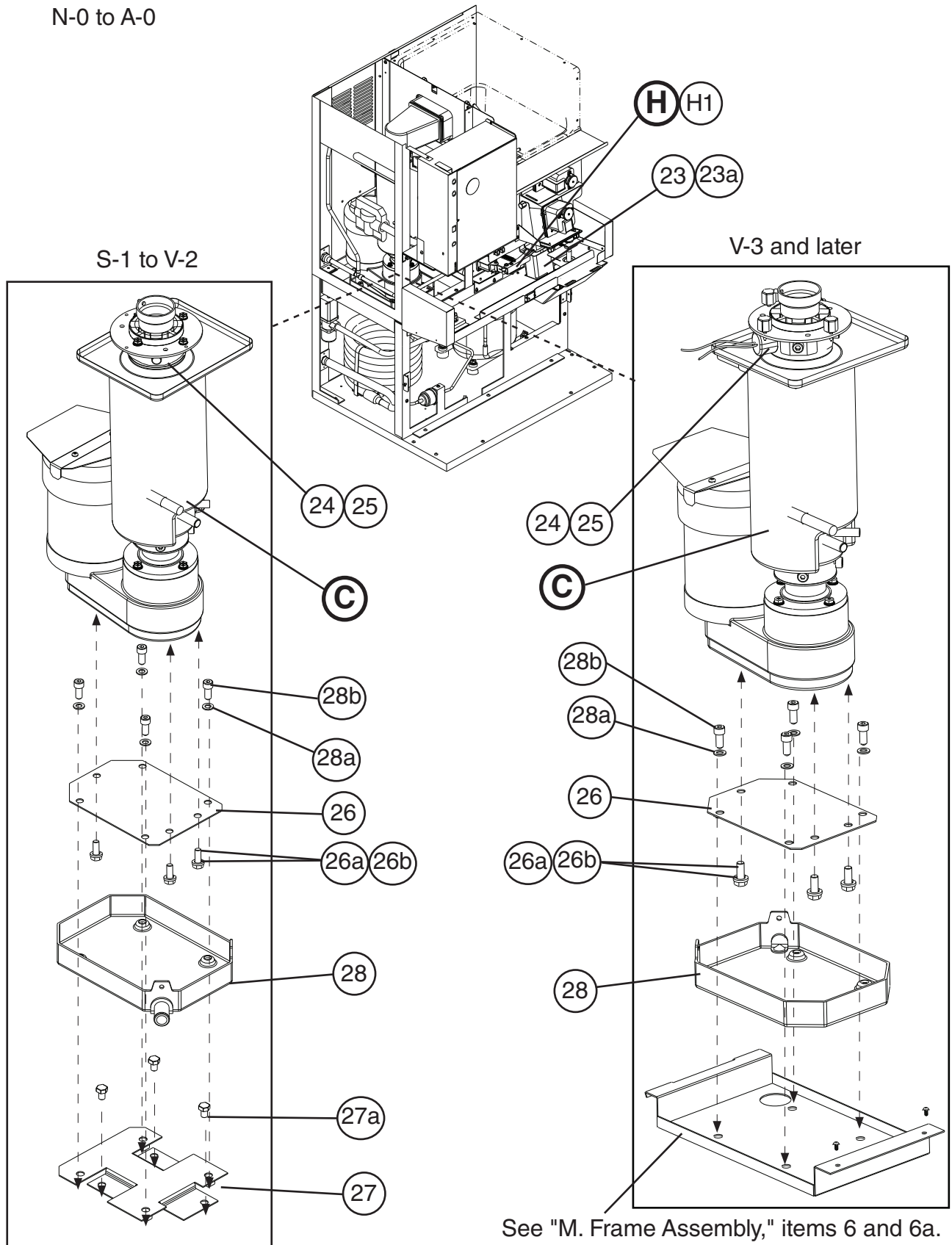


# A. Ice Dispenser Assembly

2/2

DCM-500BWH-OS

N-0 to A-0

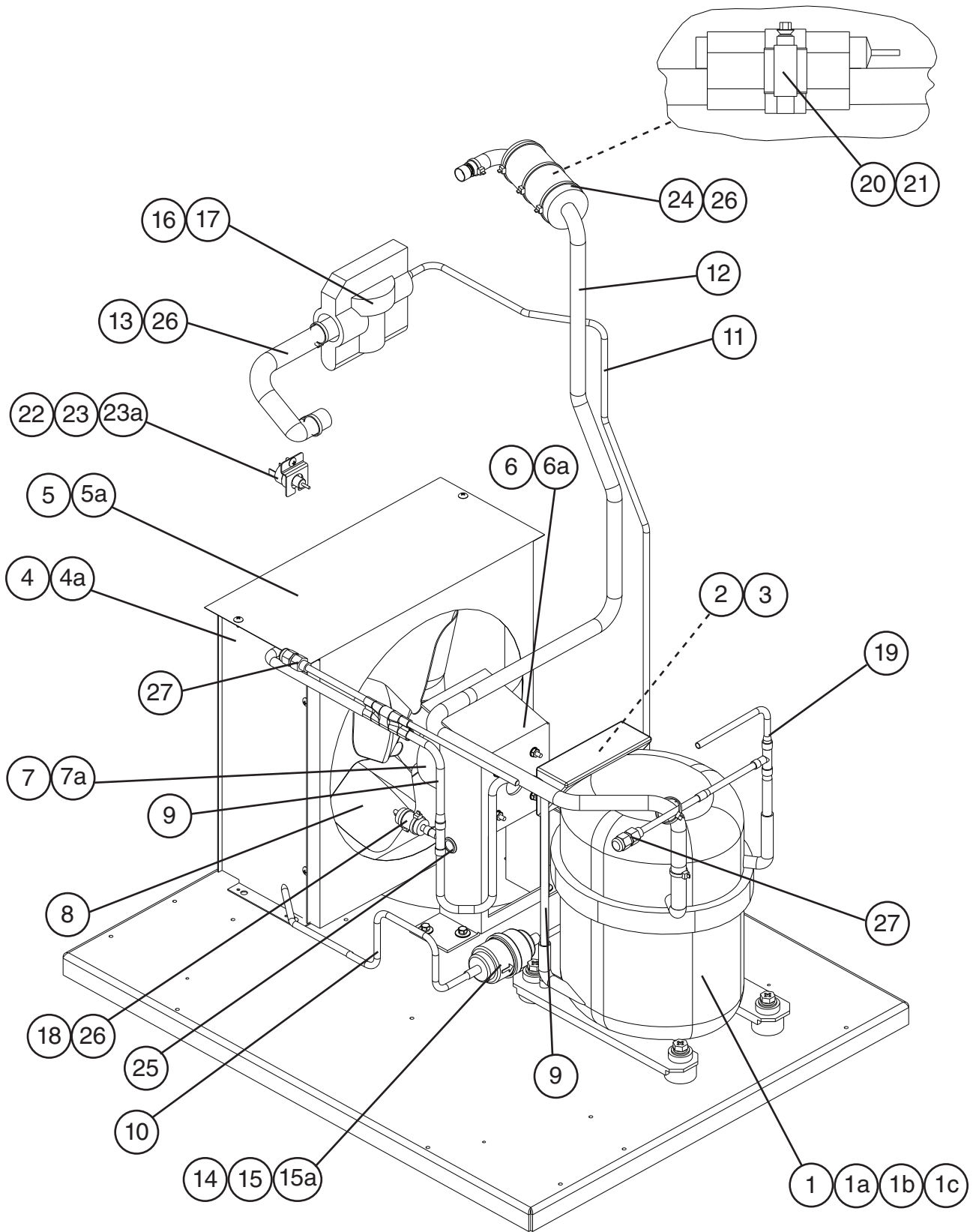


Title: <b>A. Ice Dispenser Assembly</b> Model: <b>DCM-500BWH-OS</b>													
Index No.	Description	Material or Model Number	Part Number	Required Number									
				N-0 to Q-0	Q-1	R-0 to S-0	S-1 to U-0	U-1 to V-0	V-2	V-3	V-4	V-5	A-0
B	Refrigeration Circuit		2A2399A01	1	1	1	1	1	-				
			2A5917A01						1	1	1	-	
			2A5917A02									1	1
C	Icemaking Unit		3A0623A03	1	1	1	-						
			3A0623A04				1	1	1	1	1	1	1
D	Water Circuit		2A0395A02	1	1	1	-						
			2A0395A03				1	1	1	-			
			2A5455A01							1	1	1	1
E	Control Box Assembly		2A2615A02	1	1	-							
			2A2615A04			1	-						
			2A2615A06				1	-					
			2A2615A08					1	-				
			2A2615A10						1	-			
			2A5460A05							1	1	1	1
E1	Truss Head Screw	4x8	7C31-0408	3	3	3	3	3	3	3	3	3	-
	FT Screw	4x8, SS	7F32-0408										4
F	Apron Panel Assembly		3A2502A01	1	-								
			3A3618A01		1	1	1	1	1	1	1	1	1
F1	Truss Head Screw	4x8, SS	7C32-0408	4	4	4	4	4	4	4	4	4	4
G	Middle Front Frame Assembly		2A2603A01	1	1	1	1	-					
			2A2603A02					1	1	1	1	1	1
G1	Taper Collar	SS	4H0171-01	2	2	2	2	2	2	2	2	2	2
G2	Flat Head Screw	4x12, SS	7C22-0412	2	2	2	2	2	2	2	2	2	2
H	Shutter Assembly		2A0410A01	1	1	1	1	1	1	1	1	1	1
H1	Truss Head Screw	4x8, SS	7C32-0408	2	2	2	2	-					
	FT Screw		7F32-0408					2	2	2	2	2	2
J	Gear Motor Assembly (Agitator)		4A0620A01	1	1	1	1	1	1	1	1	1	1
J1	Thumbscrew		415949G12	2	2	2	2	2	2	2	2	2	2
K	Gear Motor Assembly (Dispense)		4A0622A01	1	1	1	1	1	1	1	1	1	1
K1	Thumbscrew		415949G12	2	2	2	2	2	2	2	2	2	2
L	Bin Assembly		2A0413A01	1	1	1	1	1	1	-			
			2A0413A02							1	1	1	1
L1	Truss Head Screw	4x12, SS	7C32-0412	2	2	2	2	2	2	-			
	FT Screw	4x8, SS	7F32-0408							3	3	3	3
M	Frame Assembly		2A0388A06	1	1	1	1	1	1	-			
			2A5324A02							1	1	1	1
N	Label Location		2A2604A02	1	1	1	-						
			2A2604A04				1	1	1	1	1	1	1
1	Spout (B)		208807-01	1	1	1	1	1	1	1	1	1	1
1a	Thumbscrew		415949G11	4	4	4	4	4	4	4	4	4	4
2	Spout Cover		215773-01	1	1	1	1	1	1	1	1	1	1
2a	Thumbscrew		415949G08	2	2	2	2	2	2	2	2	2	2
3	Cup Guide		326702-01	2	2	2	2	2	2	2	2	2	2
4	Bushing		428394-02							1	1	1	1

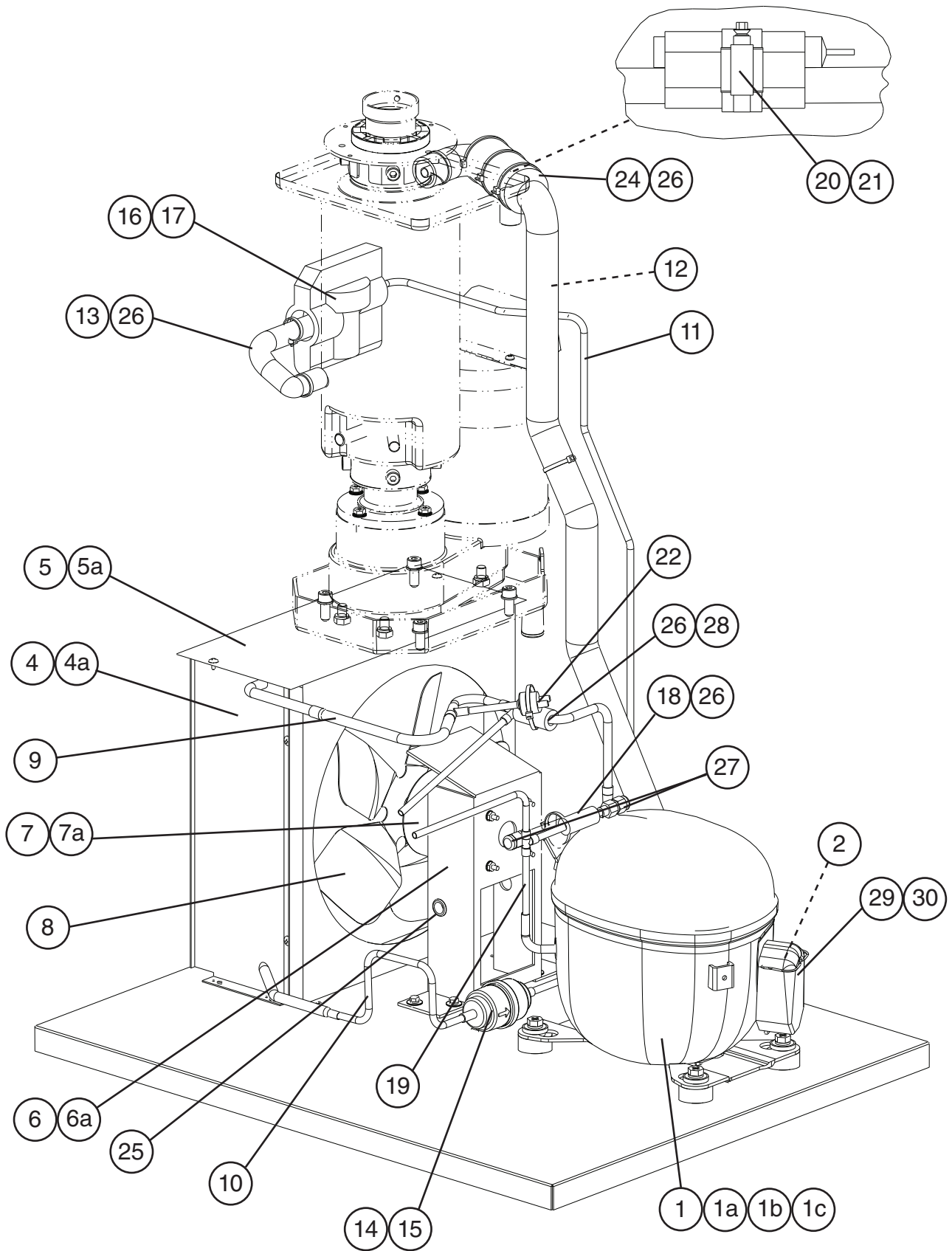
Title: <b>A. Ice Dispenser Assembly</b> Model: <b>DCM-500BWH-OS</b>														
Index No.	Description	Material or Model Number	Part Number	Required Number										
				N-0 to Q-0	Q-1	R-0 to S-0	S-1 to U-0	U-1 to V-0	V-2	V-3	V-4	V-5	A-0	
5	Bushing	SR-30-1	420472-03	1	1	1	1	1	-					
	Cable Tie		8911-0150						1	1	1	1	1	
6	Packing		427151-02	1	1	1	1	1	1	1	1	1	1	
7	Packing (A) Spout		427195-01	1	1	1	1	1	1	1	1	1	1	
8	Packing (B) Spout		427196-01	1	1	1	1	1	1	1	1	1	1	
9	Gasket		429758-01	2	2	2	2	2	2	2	2	2	2	
10	Square Washer		433537-02	1	1	1	1	1	1	1	1	1	1	
11	Grounding Screw		433304-02	1	1	1	1	1	1	1	1	1	1	
12	Spout		103329G01	1	1	1	1	1	1	1	1	1	1	
12a	Thumbscrew		415949G11	3	3	3	3	3	3	3	3	3	3	
13	Panel (Lo)	SS	2A0699G01	1	1	1	1	1	1	1	1	1	1	
13a	FT Screw	4x8, SS	7F32-0408	6	6	6	6	6	6	6	6	6	6	
14	Grille		2A0827G01	1	1	1	1	1	1	1	1	1	1	
15	Bin Cover		2A0880A02	1	1	1	1	1	1	1	1	1	1	
15a	Thumbscrew		415949G12	4	4	4	4	4	4	4	4	4		
16	Drip Tray		2A2591G01	1	1	1	1	1	1	1	1	1	1	
16a	Truss Head Screw	4x8, SS	7C32-0408	4	4	4	4	4	-					
	FT Screw		7F32-0408						4	4	4	4	4	
17	Auger (Dispense)	SS	339192G01	1	1	1	1	1	1	1	1	1	1	
18	Agitator	SS	3A0895G01	1	1	1	1	1	1	1	1	1	1	
19	Evaporator Bracket	SS	3A0360-01	1	1	1	1	1	1	1	1	1	1	
19a	Hex Bolt w/Washer (LF)	5x10, SS	7B0230510	2	2	2	2	2	2	2	2	2	2	
20	Top Panel	SS	3A2514G01	1	1	1	1	1	1	1	1	1	1	
21	Reservoir Bracket		3A5675-01							1	1	1	1	
21a	FT Screw		7F32-0408							2	2	2	2	
22	Wire Saddle		4A0338-01							2	2	2	2	
23	Ice Chute		4A2204-01	1	1	1	1	1	1	1	1	1	1	
23a	Thumbscrew		415949G08	2	2	2	2	2	2	2	2	2	2	
24	Heater (includes item 25)		4A2292-01				1	1	1	1	1	1	1	
25	Spring		4A2292F01				1	1	1	1	1	1	1	
26	Gear Motor Bracket	SS	4A4308-01				1	1	1	1	1	1	1	
26a	Hex Head Bolt	8x12, SS	7B02-0812				3	3	3	3	3	3	3	
26b	Split Lock Washer	M8, SS	7L22-0800				3	3	3	3	3	3	3	
27	Drain Pan Bracket Assembly	SS	4A4315G01				1	1	1	See "M. Frame Assembly," items 6 and 6a				
27a	Hex Head Bolt	8x12, SS	7B02-0812				3	3	3					
28	Drain Pan Assembly		323765G02	See "D. Water Circuit," item 40.			-							
			4A4354G01				1	1	1	-				
			4A4354G02							1	1	1	1	
28a	Flat Washer	M8, SS	7W22-0800				4	4	4	4	4	4	4	
28b	Allen Head Cap Screw	8x20, SS	7S12-0820				4	4	4	4	4	4	4	
29	Rear Panel	GS	2A2471-01	1	1	1	1	1	1	-				
			2A5402-01							1	1	1	1	
29a	Truss Head Screw	4x8, SS	7C32-0408	4	4	4	4	4	4	-				
	FT Screw		7F32-0408							4	4	4	4	

Title: <b>A. Ice Dispenser Assembly</b> Model: <b>DCM-500BWH-OS</b>														
Index No.	Description	Material or Model Number	Part Number	Required Number										
				N-0 to Q-0	Q-1	R-0 to S-0	S-1 to U-0	U-1 to V-0	V-2	V-3	V-4	V-5	A-0	
30	Side Panel (L)	SS	2A2624-01	1	1	1	1	1	1	1	-			
			2A6142-01							1	1	1	1	
30a	Truss Head Screw	4x8, SS	7C32-0408	6	6	6	6	6	6	6	-			
	FT Screw		7F32-0408							6	6	6	6	
31	Side Panel (R)	SS	2A2625-01	1	1	1	1	1	1	1	-			
			2A6141-01							1	1	1	1	
31a	Truss Head Screw	4x8, SS	7C32-0408	6	6	6	6	6	6	6	-			
	FT Screw		7F32-0408							6	6	6	6	
32	Gear Motor Cover		3A1058-01	1	1	1	See "C. Icemaking Unit."							
32a	Truss Head Screw	4x8, SS	7C32-0408	2	2	2								

**B. Refrigeration Circuit**  
**DCM-500BAH-OS**  
 M-0 to V-0



**B. Refrigeration Circuit**  
**DCM-500BAH-OS**  
 V-2 to V-5



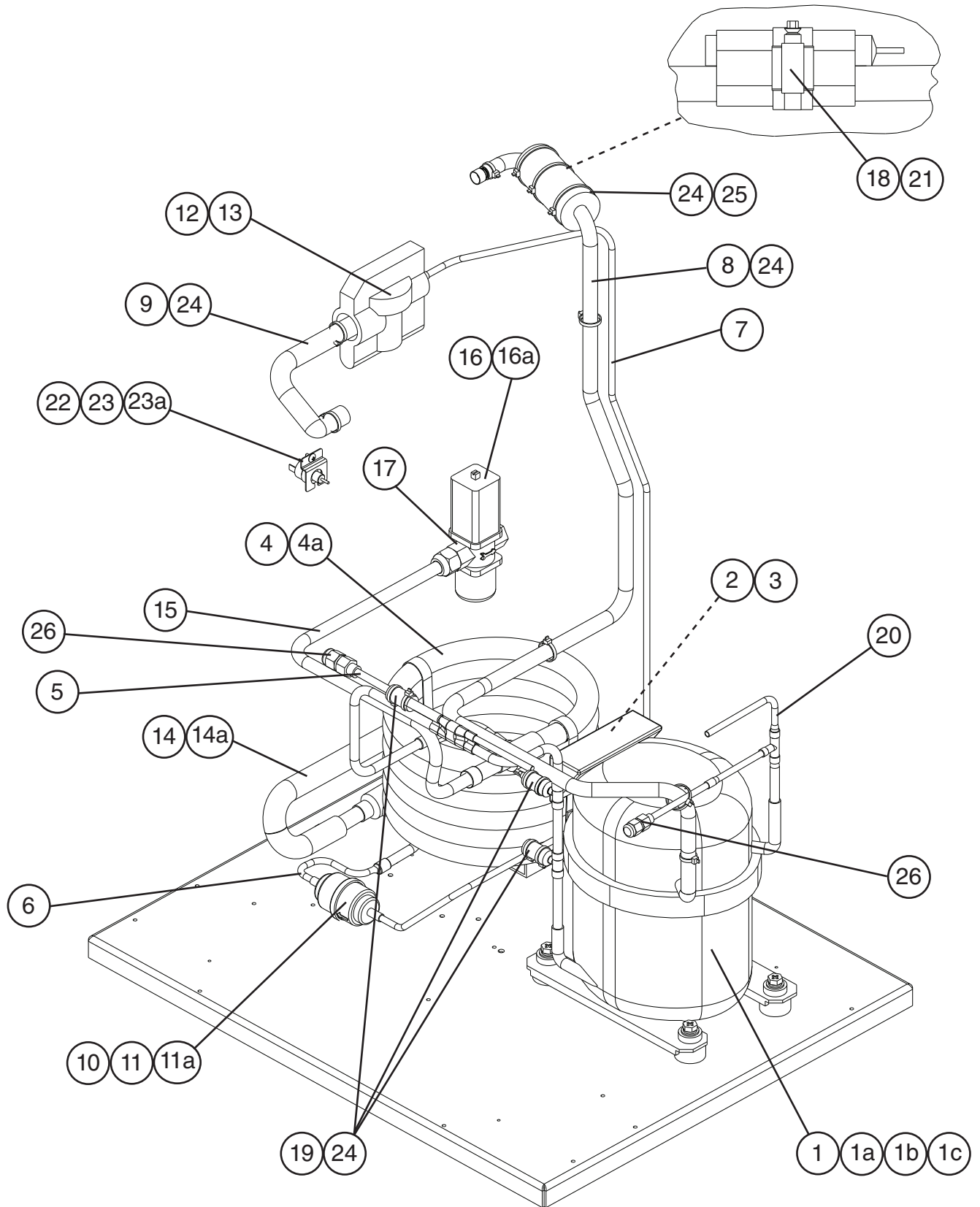


Title: <b>B. Refrigeration Circuit</b> Model: <b>DCM-500BAH-OS</b>											
Index No.	Description	Material or Model Number	Part Number	Required Number							
				M-0 to V-0	V-2 to V-4	V-5					
1	Compressor	RS43C2E-CAA-219	4A2300-01	1	-						
		RST45C1E-CAA-202	4A4479-01		1	1					
1a	Grommet		434403-01	4	-						
			4A2593-01		4	4					
1b	Spacer		434404-01	4	-						
			4A2595-01		4	4					
1c	Bolt	8x45	437889-01	4	4	4					
2	Protector		4A1805-01	1	-						
			4A4481-01		1	1					
3	Protector Holder		437339-01	1	-						
4	Condenser		210104-02	1	1	1					
4a	FT Screw	4x8, SS	7F32-0408	2	2	2					
5	Shroud	GS	2A0728-01	1	1	1					
5a	T2 Screw	4x8	7P31-0408	6	6	6					
6	Fan Motor Bracket		3A0650-01	1	1	1					
6a	Hex Head Bolt w/Washer (LF)	5x12, SS	7B0230512	4	4	4					
7	Fan Motor	5KPM84DFK148AS	4A3158-01	1	1	1					
7a	Self Locking Nut	8-32	7N2110832	4	4	4					
8	Fan Blade	AD10CW32	444898-01	1	1	1					
9	Copper Tube (A)-High Side (1 of item 27; order assembly parts individually)		340127G01	1	-						
	Copper Tube (A)-High Side (item 22 and 1 of item 27; order assembly parts individually)		3A5914G01		1	1					
10	Copper Tube (B)-High Side		453831-01	1	1	1					
11	Copper Tube (C)-High Side		340129-01	1	1	1					
12	Copper Tube (A)-Low Side		2A1821G01	1	-						
			3A5915A01		1	1					
13	Copper Tube (B)-Low Side		4A2175G01	1	1	1					
14	Drier		4A1113-01	1	1	1					
15	Drier Bracket	GS	445847-01	1	-						
	Nylon Tie		8911-0301		1	1					
15a	FT Screw	4x8, SS	7F32-0408	1	-						
16	Expansion Valve		4A1117-01	1	1	1					
17	Expansion Valve Cover		4A1168-01	1	1	1					
18	Insulation Tube	L=30	7762-0717	1	-						
		L=40			2	2					
19	Copper Tube-Access Valve (1 of item 27; order assembly parts individually)		453830G01	1	-						
			4A5102G01		1	-					
			4A5102G02			1					
20	Clamp		443461-01	1	1	1					
21	Expansion Valve Bulb Holder		3A0107-01	1	1	1					
22	Hi-Pressure Switch		433441-07	1	-						
			463180-04		1	1					
23	Hi-Pressure Switch Bracket	GS	434938-01	1	-						
23a	T2 Screw	4x8	7P31-0408	1	-						

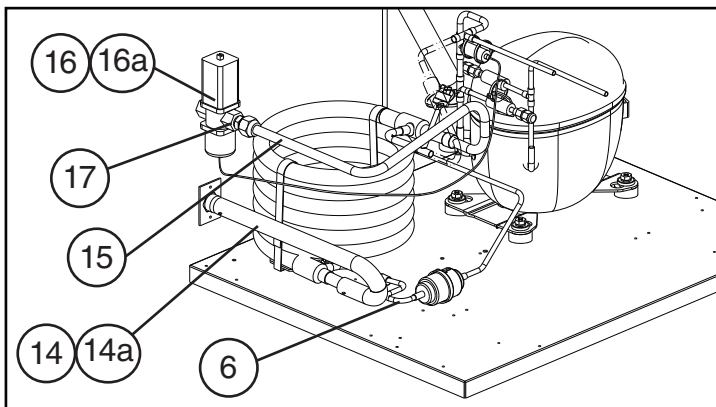
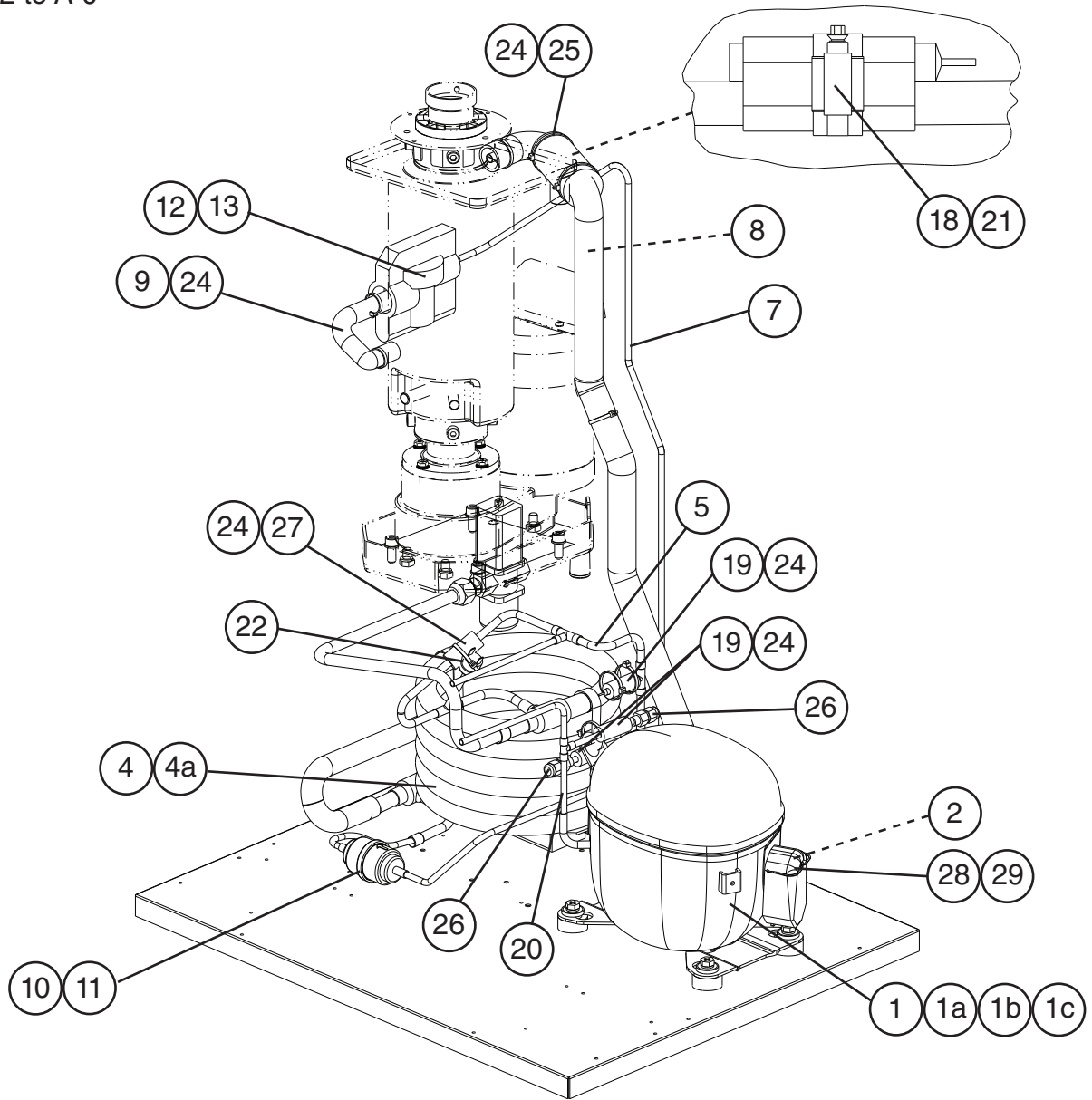
Title: **B. Refrigeration Circuit** Model: **DCM-500BAH-OS**

Index No.	Description	Material or Model Number	Part Number	Required Number								
				M-0 to V-0	V-2 to V-4	V-5						
24	Insulation Tube	L=150	7762-2646	1	1	1						
25	Bushing	SB-562-7	420470-09	1	1	1						
26	Cable Tie	CV-150	8911-0150	10	8	8						
27	Access Valve		457729-01	2	2	2						
28	Insulation Tube	L=40	7762-1020		1	1						
29	Terminal Cover		4A4479F01		1	1						
30	Spring Clip		4A4479F02		1	1						

**B. Refrigeration Circuit**  
**DCM-500BWH-OS**  
 N-0 to V-0



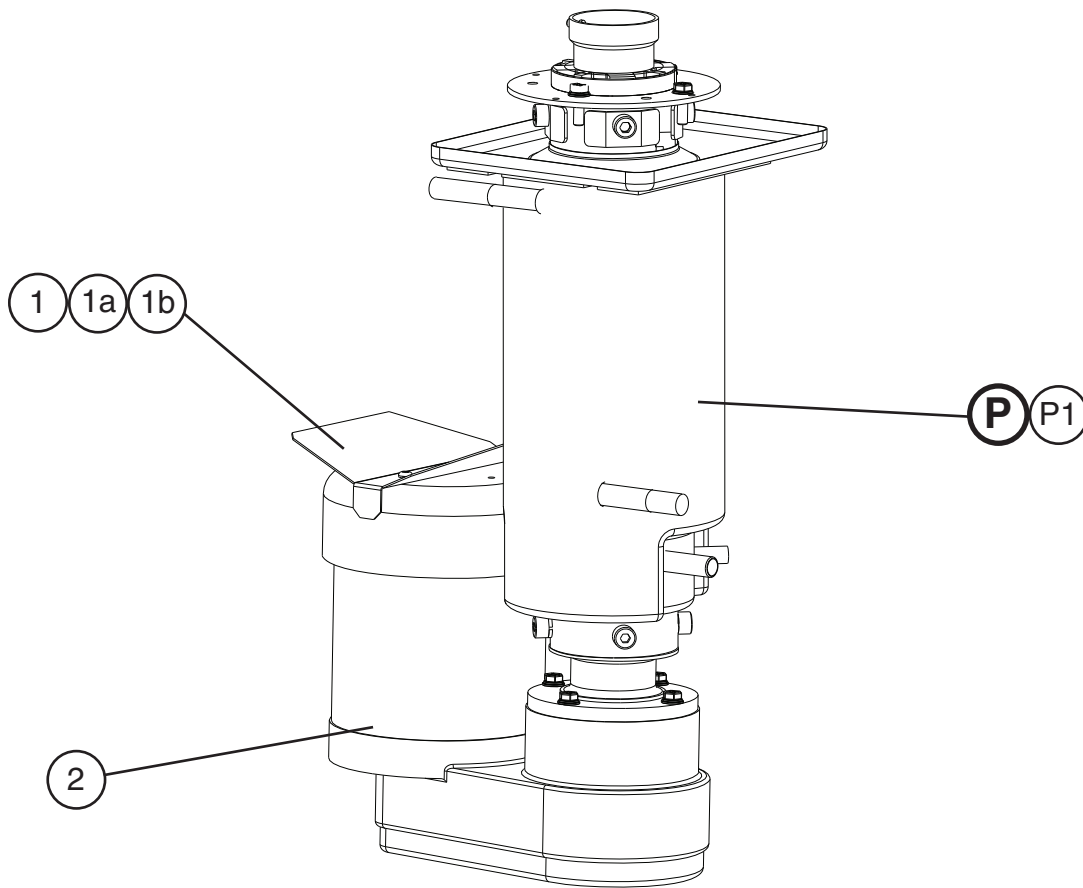
**B. Refrigeration Circuit**  
**DCM-500BWH-OS**  
 V-2 to A-0



Title: <b>B. Refrigeration Circuit</b> Model: <b>DCM-500BWH-OS</b>											
Index No.	Description	Material or Model Number	Part Number	Required Number							
				N-0 to T-0(K)	T-0(L) to V-0	V-2 to V-4	V-5 A-0				
1	Compressor	RS43C2E-CAA-219	4A2300-01	1	1	-					
		RST45C1E-CAA-202	4A4479-01			1	1				
1a	Grommet		434403-01	4	4	-					
			4A2593-01			4	4				
1b	Spacer		434404-01	4	4	-					
			4A2595-01			4	4				
1c	Bolt	8x45	437889-01	4	4	4	4				
2	Protector		4A1805-01	1	1	-					
			4A4481-01			1	1				
3	Protector Holder		437339-01	1	1	-					
4	Condenser	HS-0161	2A2359G02	1	1	1	1				
4a	Hex Head Bolt w/Washer (LF)	5x12, SS	7B0230512	2	2	2	2				
5	Copper Tube (A)-High Side (includes 1 of item 26; order assembly parts individually)		3A2215G01	1	1	-					
	Copper Tube (A)-High Side (includes item 22 and 1 of item 26; order assembly parts individually)		3A5923G01			1	1				
6	Copper Tube(B)-High Side		4A2680-01	1	1	1	1				
7	Copper Tube (C)-High Side		2A2455-01	1	1	1	1				
8	Copper Tube (A)-Low Side		2A1821G01	1	1	-					
			3A5915A01			1	1				
9	Copper Tube (B)-Low Side		4A2175G01	1	1	1	1				
10	Drier		4A1113-01	1	1	1	1				
11	Drier Bracket	GS	445847-01	1	1	-					
	Nylon Tie		8911-0301			1	1				
11a	FT Screw	4x8, SS	7F32-0408	1	1	-					
12	Expansion Valve		4A1117-01	1	1	1	1				
13	Expansion Valve Cover		4A1168-01	1	1	1	1				
14	Inlet Water Tube		3A2230G01	1	1	1	1				
14a	Truss Head Screw	4x6, SS	7C32-0406	2	2	2	2				
15	Outlet Water Tube		3A2231G01	1	1	1	1				
16	Water Regulator		4A0911-04	1	1	1	1				
16a	Truss Head Screw	4x6, SS	7C32-0406	2	2	2	2				
17	Male Connector		4A1087-01	1	1	1	1				
18	Clamp		443461-01	1	1	1	1				
19	Insulation Tube	L=30	7762-0717	2	2	-					
		L=40				3	3				
20	Copper Tube-Access Valve (1 of item 26; order assembly parts individually)		453830G01	1	1	-					
			4A5102G01			1	-				
			4A5102G02				1				
21	Expansion Valve Bulb Holder		3A0107-01	1	1	1	1				
22	Hi-Pressure Switch		433441-05	1	1	-					
			463180-05			1	1				
23	Hi-Pressure Switch Bracket		434938-01	1	1	-					
23a	T2 Screw	4x8	7P31-0408	1	1	-					
24	Cable Tie		8911-0150	15	10	10	10				

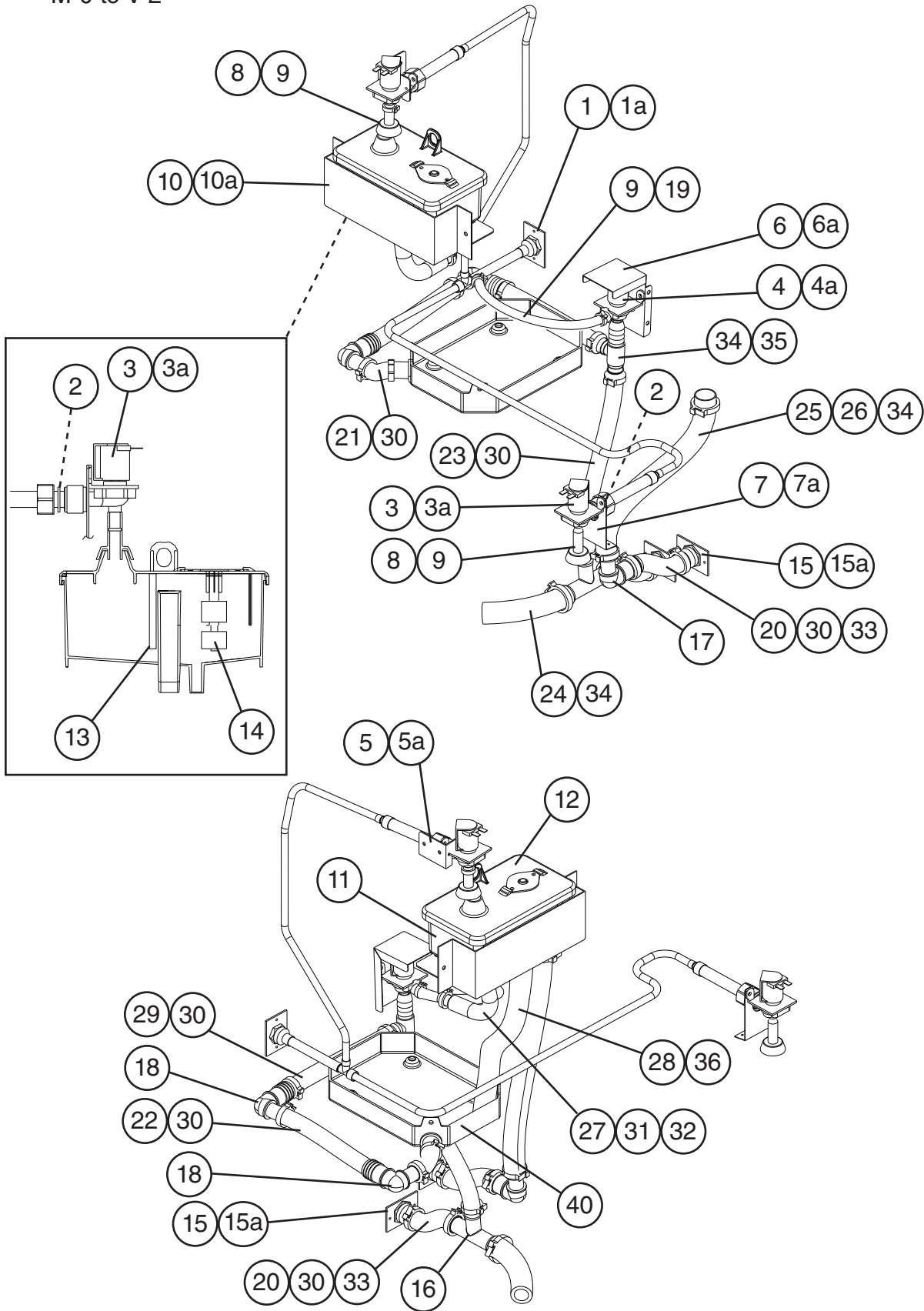
Title: <b>B. Refrigeration Circuit</b> Model: <b>DCM-500BWH-OS</b>										
Index No.	Description	Material or Model Number	Part Number	Required Number						
				N-0 to T-0(K)	T-0(L) to V-0	V-2 to V-4	V-5 A-0			
25	Insulation Tube	L=150	7762-2646	1	1	1	1			
26	Access Valve		457729-01	2	2	2	2			
27	Insulation Tube	L=40	7762-1020			1	1			
28	Terminal Cover		4A4479F01			1	1			
29	Spring Clip		4A4479F02			1	1			

**C. Icemaking Unit**  
**DCM-500BAH-OS, DCM-500BWH-OS**  
M-0 to A-0



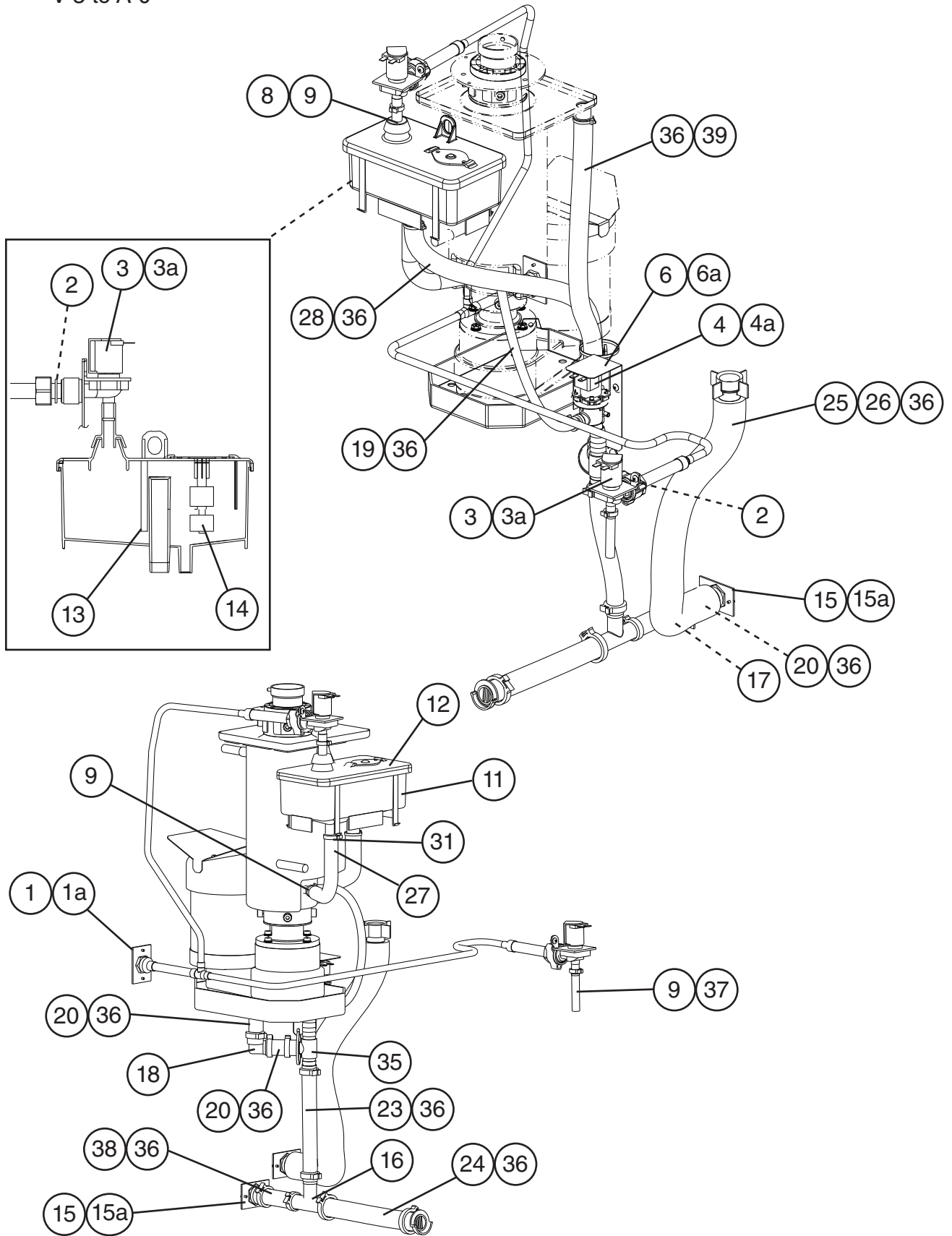
Title: C. Icemaking Unit		Model: DCM-500BAH-OS, DCM-500BWH-OS		Required Number										
Index No.	Description	Material or Model Number	Part Number	M-0 to N-0	N-1 to S-0	S-1 to V-2	V-3	V-4 to A-0						
				P	Evaporator Assembly	HS-2013	2A1205A02	1	-					
			2A1205A03		1	1	1	-						
			2A1205A04					1						
P1	Bolt		4A1989-01	4	4	4	4	4						
1	Gear Motor Cover		3A4584-01	See "A. Ice Dispenser Assembly."		1	1	1						
1a	Rubber Seal Washer	4mm	4A5268-01				2	2						
1b	Truss Head Screw	7C32-0508	7C32-0508	See "A. Ice Dispenser Assembly."		2	2	2						
2	Gear Motor (For mounting hardware, see items 26a and 26b in "A. Ice Dispenser Assembly")		4A2194-01	1	1	-								
			4A4320-01			1	1	1						

**D. Water Circuit**  
**DCM-500BAH-OS, DCM-500BWH-OS**  
 M-0 to V-2





**D. Water Circuit**  
**DCM-500BAH-OS, DCM-500BWH-OS**  
 V-3 to A-0



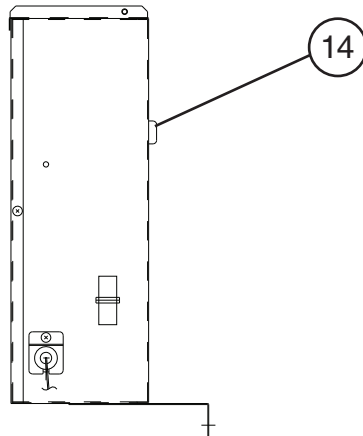
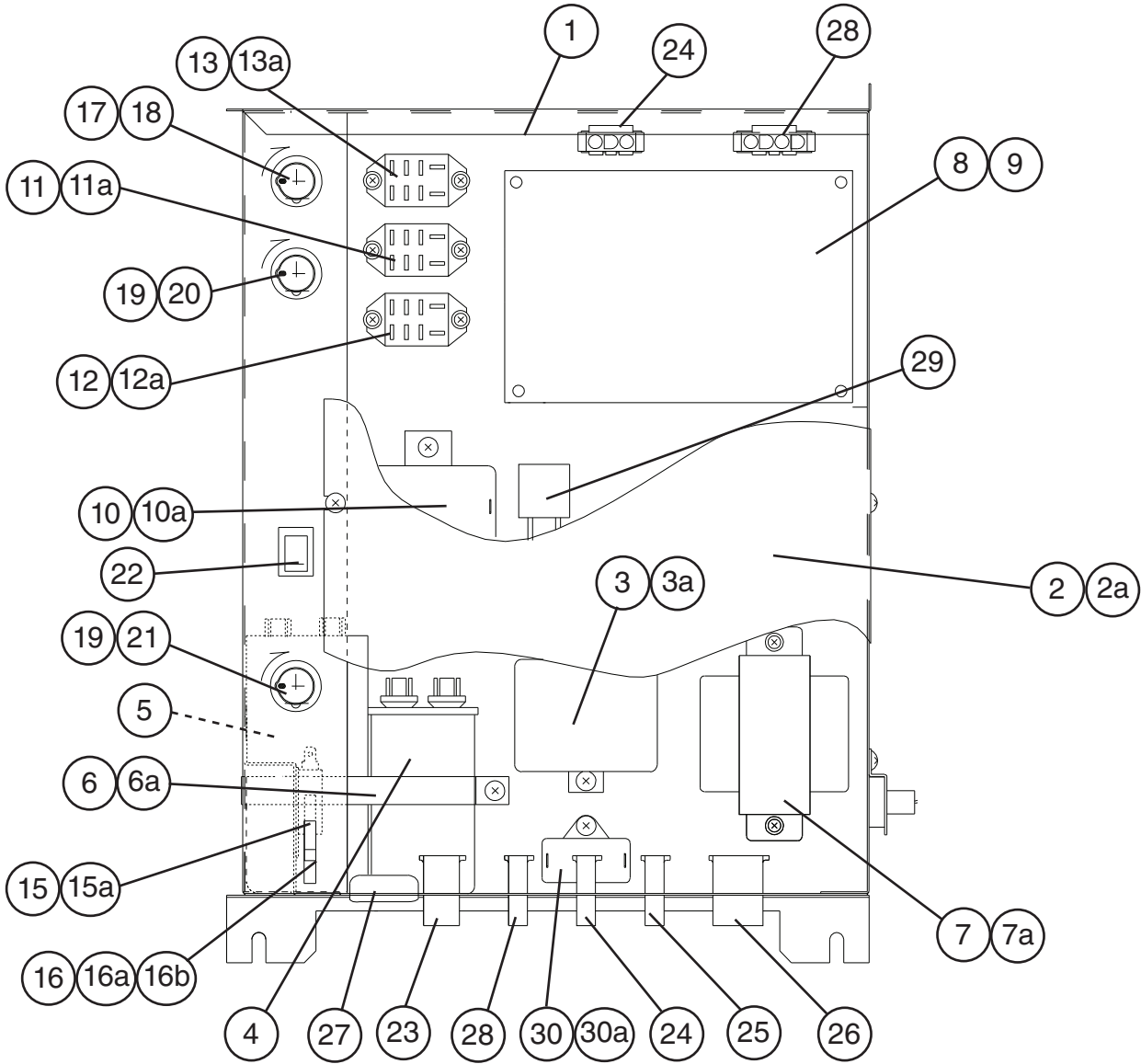
Title: **D. Water Circuit** Model: **DCM-500BAH-OS, DCM-500BWH-OS**

Index No.	Description	Material or Model Number	Part Number	Required Number									
				M-0 to P-1	Q-0 to S-0	S-1 to V-2	V-3 to A-0						
1	Water Supply Pipe		2A0680G01	1	1	1	1						
1a	T2 Screw	4x8	7P31-0408	2	2	2	-						
	FT Screw	4x8, SS	7F32-0408				2						
2	Washer		4A0867-01	2	2	2	2						
3	Water Valve (Inlet and Dispense)	S-30	4A0865-01	2	2	2	2						
3a	T2 Screw	4x8	7P31-0408	4	4	4	-						
	FT Screw	4x8, SS	7F32-0408				4						
4	Water Valve (Drain)		4A2772-01	1	1	1	1						
4a	T2 Screw	4x8	7P31-0408	2	2	2	-						
	FT Screw	4x8, SS	7F32-0408				1						
5	Water Valve Bracket (A)	GS	4A0997-01	1	1	1	-						
5a	T2 Screw	4x8	7P31-0408	2	1	1	-						
6	Water Valve Bracket (B)	GS	3A1421-01	1	-								
			4A3613-01		1	1	-						
	Drain Valve Bracket		3A6156-01				1						
6a	Truss Head Screw	4x8	7C31-0408	2	2	2	-						
	FT Screw	4x8, SS	7F32-0408				2						
7	Water Valve Bracket (C)	SS	4A0999-01	1	1	1	-						
7a	T2 Screw	4x8	7P31-0408	2	2	2	-						
8	Reservoir Inlet		4A0869-01	2	2	2	1						
9	Hose Clamp	2318 HC 531	4A2017-08	4	4	4	5						
10	Reservoir Bracket (V-3 moved to "A. Ice Dispenser Assembly")	GS	3A0356-01	1	1	1	-						
10a	Truss Head Screw	4x8	7C31-0408	2	2	2	-						
11	Reservoir		2A0753-01	1	1	1	1						
12	Reservoir Cover		214810-01	1	1	1	1						
13	Reservoir Separator		4A1255-01	1	1	1	1						
14	Float Switch		435490-01	1	1	1	1						
15	Fitting		4A0776G01	2	2	2	2						
15a	T2 Screw	4x8	7P31-0408	4	4	4	-						
	FT Screw	4x8, SS	7F32-0408				4						
16	Tee		4A0525-04	1	1	1	1						
17	Elbow		4A1016-01	1	1	1	1						
18	Elbow	P12EUB12	4A1017-01	2	2	1	1						
19	Silicone Hose	L=310	773013896	1	1	1	-						
		L=300					1						
20	Vinyl Hose	L=70	7716-2025	2	2	2	-						
		L=60					3						
21	Vinyl Hose	L=50	7725-1923	1	1	1	-						
22	Vinyl Hose	L=240	7725-1923	1	1	1	-						
23	Vinyl Hose	L=320	7725-1923	1	1	1	-						
		L=225					1						
24	Vinyl Hose	L=250	4A0658L01	1	1	1	-						
		L=225					1						
25	Vinyl Hose	L=345	4A0658L01	1	1	1	1						
26	Insulation Hose	L=550	7762-3555	1	1	1	1						
27	Reservoir Hose		4A1165-02	1	1	1	1						

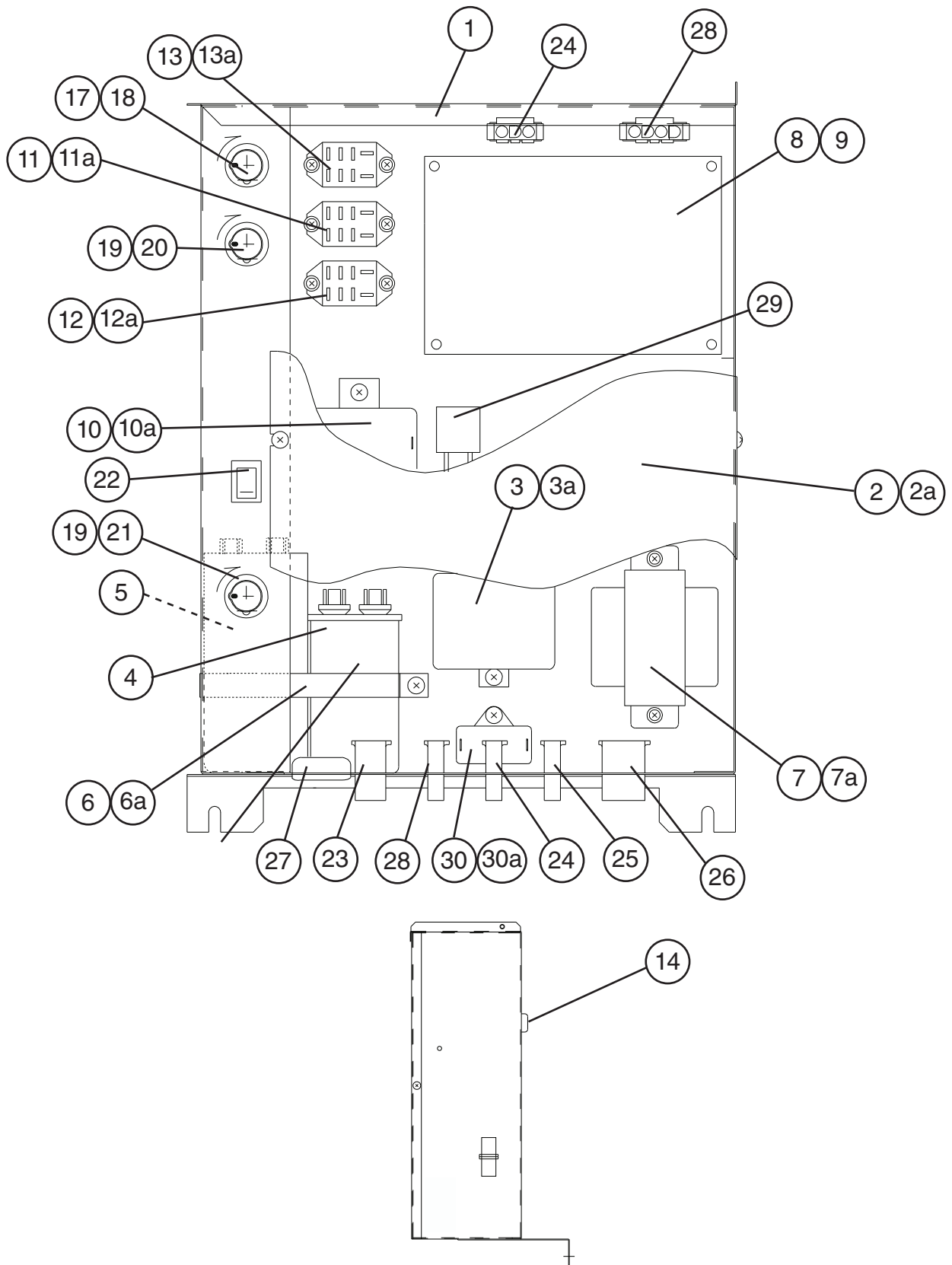
Title: **D. Water Circuit** Model: **DCM-500BAH-OS, DCM-500BWH-OS**

Index No.	Description	Material or Model Number	Part Number	Required Number									
				M-0 to P-1	Q-0 to S-0	S-1 to V-2	V-3 to A-0						
28	Vinyl Hose	L=330	7725-1923	1	1	1	-						
		L=320	7716-2025				1						
29	Vinyl Hose	L=205	7725-1923	1	1	1	-						
30	Hose Clamp	2338 HC 953	4A2017-01	10	10	10	-						
31	Hose Clamp	2326 HC 672	4A2017-05	1	1	1	1						
32	Hose Clamp	2330 HC 750	4A2017-06	1	1	1	-						
33	Hose Clamp	2324 HC 1031	4A2017-02	2	2	2	-						
34	Hose Clamp	2346 HC 1250	4A2017-03	4	4	4	-						
35	Tee		420041-02	1	-								
			4A3615-01		1	1	1						
36	Cable Tie		8911-0150	2	2	2	20						
37	Vinyl Hose	L=75	7725-0912				1						
38	Vinyl Hose	L=100	7716-2025				1						
39	Vinyl Hose	L=430	7716-2025				1						
40	Drain Pan		323765G02	1	1	See "A. Ice Dispenser Assembly," item 28.							

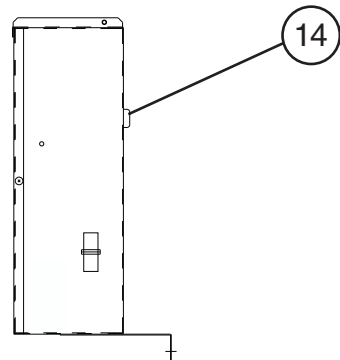
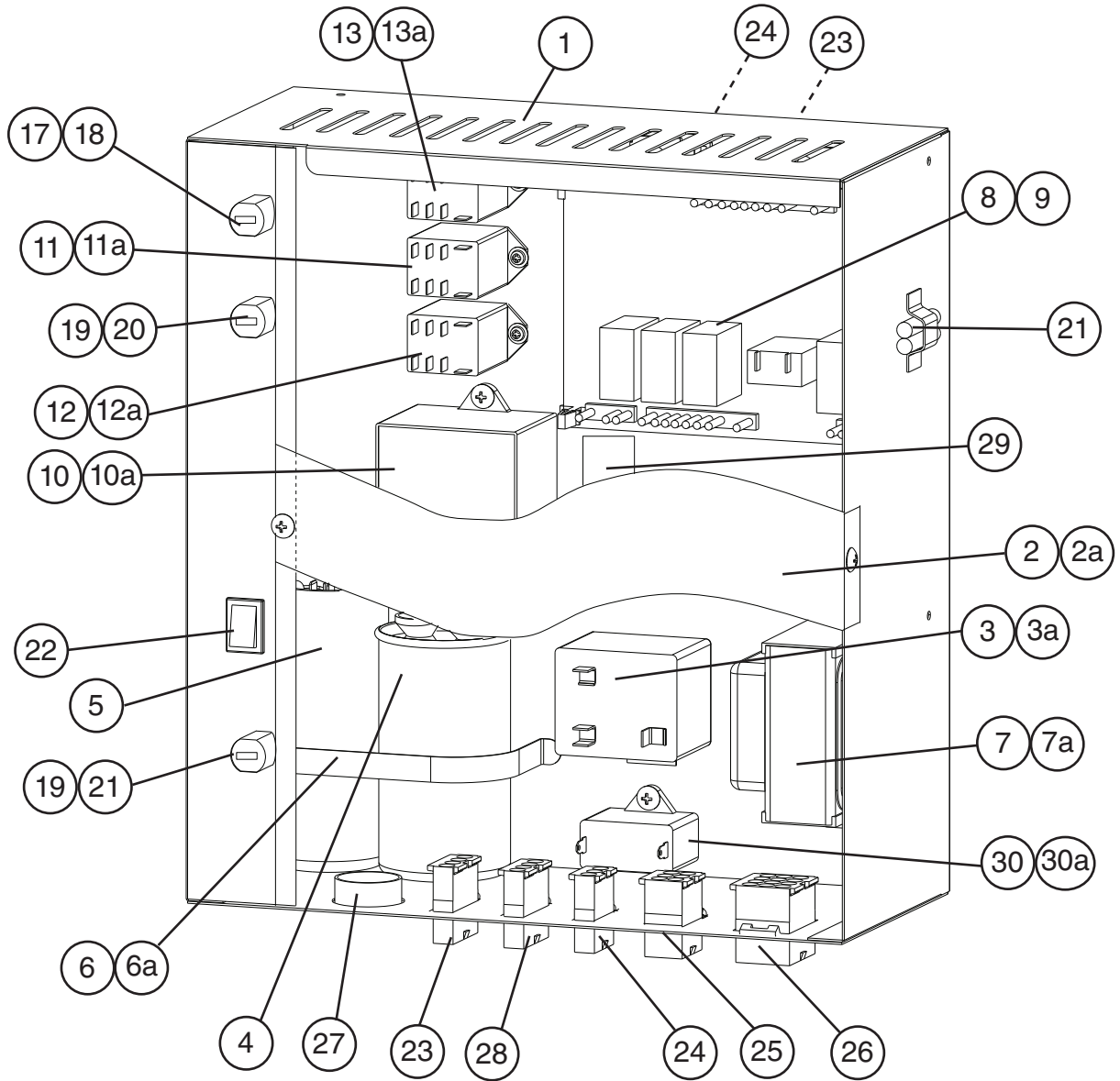
**E. Control Box Assembly**  
**DCM-500BAH-OS, DCM-500BWH-OS**  
 M-0 to U-0



**E. Control Box Assembly**  
**DCM-500BAH-OS, DCM-500BWH-OS**  
 U-1 to V-2



**E. Control Box Assembly**  
**DCM-500BAH-OS, DCM-500BWH-OS**  
 V-3 to A-0

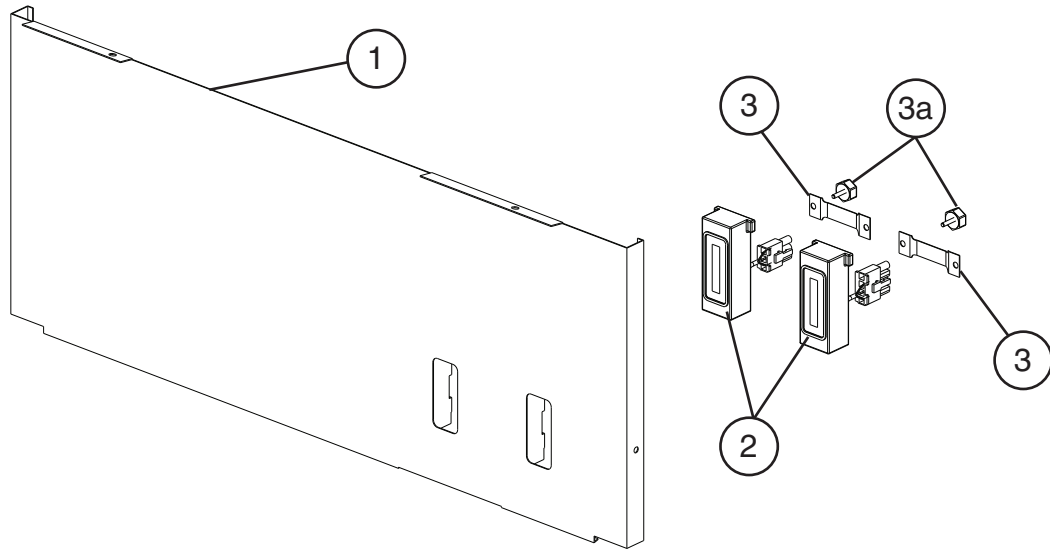


Title: <b>E. Control Box Assembly</b> Model: <b>DCM-500BAH-OS, DCM-500BWH-OS</b>											
Index No.	Description	Material or Model Number	Part Number	Required Number							
				M-0 to Q-1	R-0 S-0	S-1 to U-0	U-1 to V-0	V-2	V-3 to V-5	A-0	
1	Control Box (for mounting hardware, see item E1 in "A. Ice Dispenser Assembly.")		2A2614G01	1	1	1	1	-			
			2A2614G02					1	-		
			2A5458-02						1	1	
2	Control Box Cover		429931-01	1	1	1	1	1	-		
			4A5054-01						1	1	
2a	Truss Head Screw	4x6	7C31-0406	2	2	2	2	2	-		
	FT Screw		7F31-0406						2	2	
3	Start Relay	GE# 3ARR3CT5M5	4A1107-11	1	1	1	1	1	1	1	
3a	T2 Screw	4x8	7P31-0408	1	1	1	1	1	1	1	
4	Run Capacitor	15MFD, 370VAC	3A2005-08	1	1	1	1	-			
		35MFD, 440VAC	3A2005-12					1	1	1	
5	Start Capacitor	243-292MFD, 115VAC	3A0076-10	1	1	1	1	-			
		243-292MFD, 165VAC	3A0076-20					1	1	1	
6	Strap		4A2262-02	1	1	1	1	1	1	1	
6a	T2 Screw	4x8	7P31-0408	1	1	1	1	1	1	1	
7	Control Transformer		2U0042-02	1	1	1	1	1	1	1	
7a	T2 Screw	4x8	7P31-0408	2	2	2	2	2	2	2	
8	Control Board		2A2649-01	1	1	1	1	1	1	1	
9	Board Support		4A0336-03	4	4	4	4	4	4	4	
10	Capacitor-Gear Motor	12MFD, 330VAC	4A0894-01	1	1	-					
		20MFD, 350VAC	4A4319-01			1	1	1	1	1	
10a	T2 Screw	4x8	7P31-0408	1	1	1	1	1	1	1	
11	Gear Motor Relay	120VAC	406132-07	1	1	1	1	1	1	1	
11a	Tapping Screw	3x8	431415-01	2	2	2	2	2	2	2	
12	Power Protect Relay	220/240VAC	418271-05	1	1	1	1	1	1	1	
12a	Tapping Screw	3x8	431415-01	2	2	2	2	2	2	2	
13	Water Control Relay	24VAC	406132-03	1	1	1	1	1	1	1	
13a	Tapping Screw	3x8	431415-01	2	2	2	2	2	2	2	
14	Bushing		420472-03	1	1	1	1	1	1	1	
15	Switch Bracket		4A1013-01	1	1	1	-				
15a	T2 Screw	4x8	7P31-0408	2	1	1	-				
16	Microswitch		4A2546-01	1	1	1	-				
16a	Spacer		429933-01	1	1	1	-				
16b	Tapping Screw	3x14	431415-02	2	1	1	-				
17	Fuse Holder		4A0892-01	1	1	1	1	1	1	-	
			4A3449-01								1
18	Fuse	AGC-1 1A, 250VAC	4A0893-01	1	1	1	1	1	1		
19	Fuse Holder		4A0892-02	2	2	2	2	2	2	-	
			4A3449-02								2
20	Fuse	GMC-500mA, 250VAC	4A0893-02	1	1	1	1	1	1	1	
21	Fuse	GMD 1.5A, 250VAC	4A0893-04	3	-						
		GMD 1.6A, 250VAC	4A0893-08		3	-					
		GMD 2.0A, 250VAC	4A0893-05			3	3	3	3	3	
22	Rocker Switch		4A0558-01	1	1	1	1	1	1	1	

Title: <b>E. Control Box Assembly</b> Model: <b>DCM-500BAH-OS, DCM-500BWH-OS</b>													
Index No.	Description	Material or Model Number	Part Number	Required Number									
				M-0 to Q-1	R-0 S-0	S-1 to U-0	U-1 to V-0	V-2	V-3 to V-5	A-0			
23	4P Plug Housing	3191-04P	412832-05	1	1	1	1	1	2	2			
24	3P Plug Housing	3191-03P	412832-06	2	2	2	2	2	2	2			
25	6P Plug Housing	3191-06P	412832-03	1	1	1	1	1	1	1			
26	9P Plug Housing	3191-09P	412832-02	1	1	1	1	-					
	12 Plug Housing	3191-12P	412832-04					1	1	1			
27	Bushing	SB-1093-15	420470-03	-	1	1	1	1	1	1			
28	4P Plug Housing (Red)	3191-04P	412832-11	2	2	2	2	2	1	1			
29	R-C Capacitor (Noise Reducer for item 13, Water Control Relay)		4A1012-01	1	1	1	1	1	1	1			
30	Capacitor-Fan Motor	<b>DCM-500BAH-OS</b> 5MFD, 250VAC	443192-02	1	1	1	1	1	1	1			
30a	T2 Screw	4x8	7P31-0408	1	1	1	1	1	1	1			

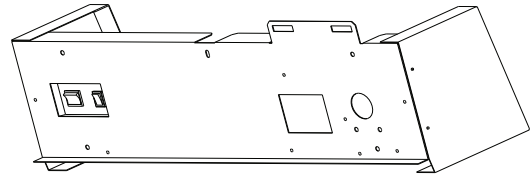
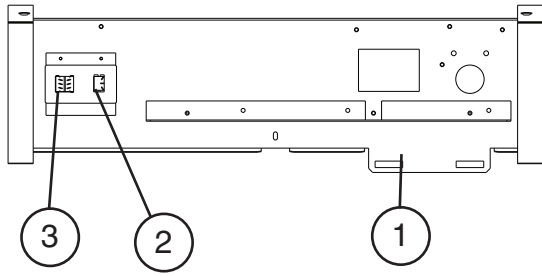


**F. Apron Panel Assembly**  
**DCM-500BAH-OS, DCM-500BWH-OS**  
M-0 to A-0

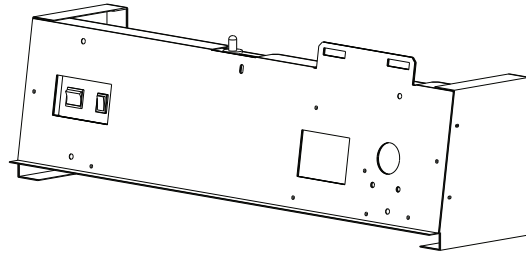
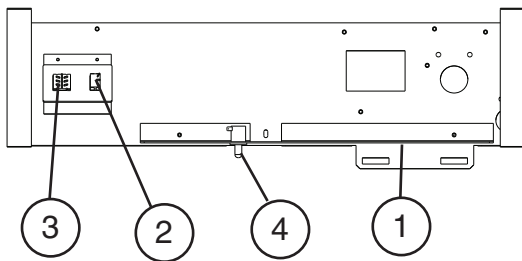


Title: <b>F. Apron Panel Assembly</b> Model: <b>DCM-500BAH-OS, DCM-500BWH-OS</b>											
Index No.	Description	Material or Model Number	Part Number	Required Number							
				M-0 to P-1	Q-0 to A-0						
1	Apron Panel		3A2494G01	1	-						
			3A3617G01		1						
2	Sensor Assembly	Ice-3 prong plug	4A3753G01	1	1						
		Water-4 prong plug	4A3753G02	1	1						
3	Sensor Cover		4A3848-01		2						
3a	Thumbscrews		415949G10		2						

**G. Middle Front Frame Assembly**  
**DCM-500BAH-OS, DCM-500BWH-OS**  
 M-0 to U-0

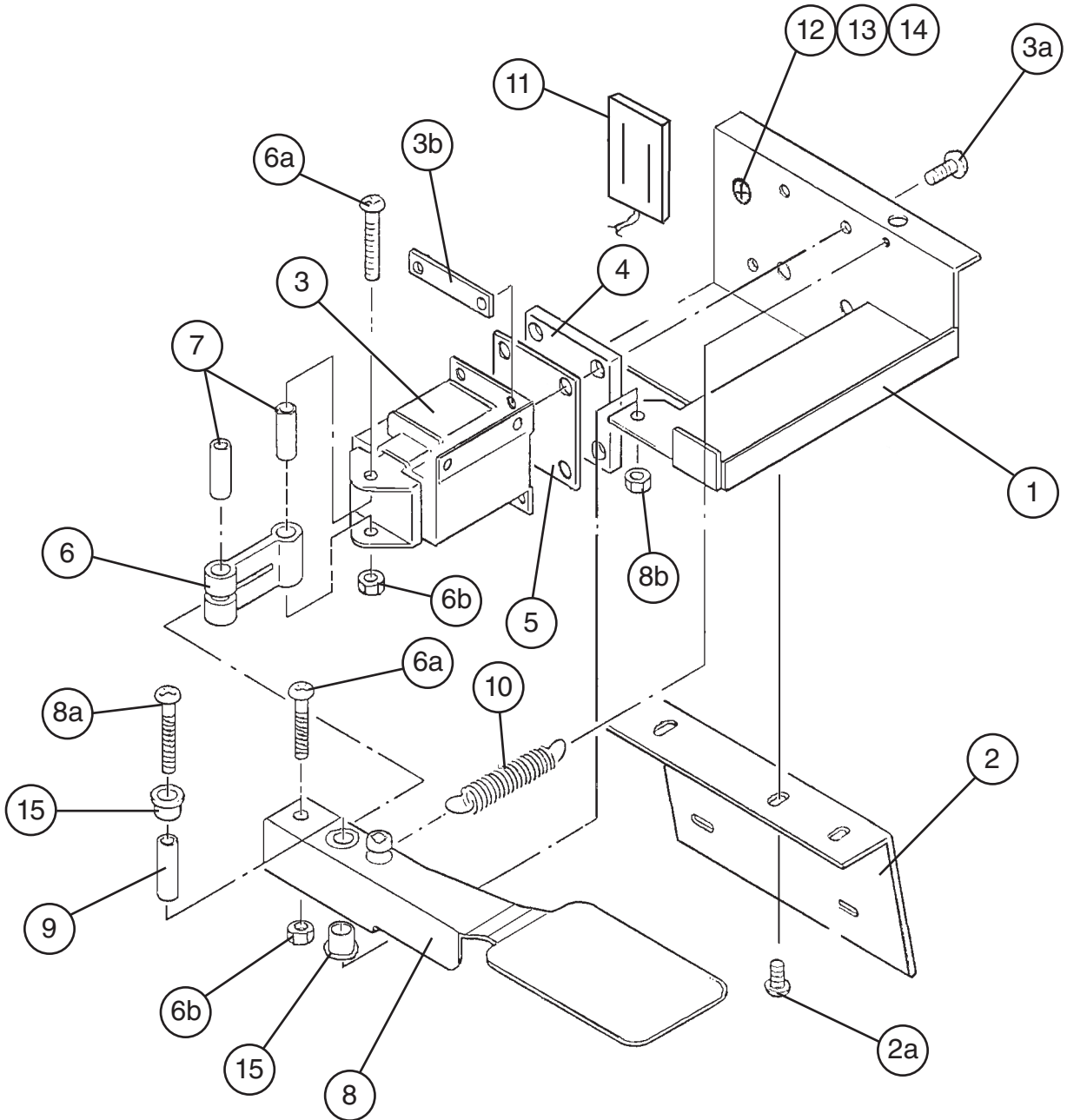


**G. Middle Front Frame Assembly**  
**DCM-500BAH-OS, DCM-500BWH-OS**  
 U-1 to A-0



Title: <b>G. Middle Front Frame Assembly</b> Model: <b>DCM-500BAH-OS, DCM-500BWH-OS</b>											
Index No.	Description	Material or Model Number	Part Number	Required Number							
				M-0 to U-0	U-1 to A-0						
1	Middle Front Frame	SS	2A2743G01	1	1						
2	Rocker Switch		4A2957-01	1	1						
3	Rocker Switch		4A1034-01	1	1						
4	Safety Switch (plunger)		4A5034-01		1						

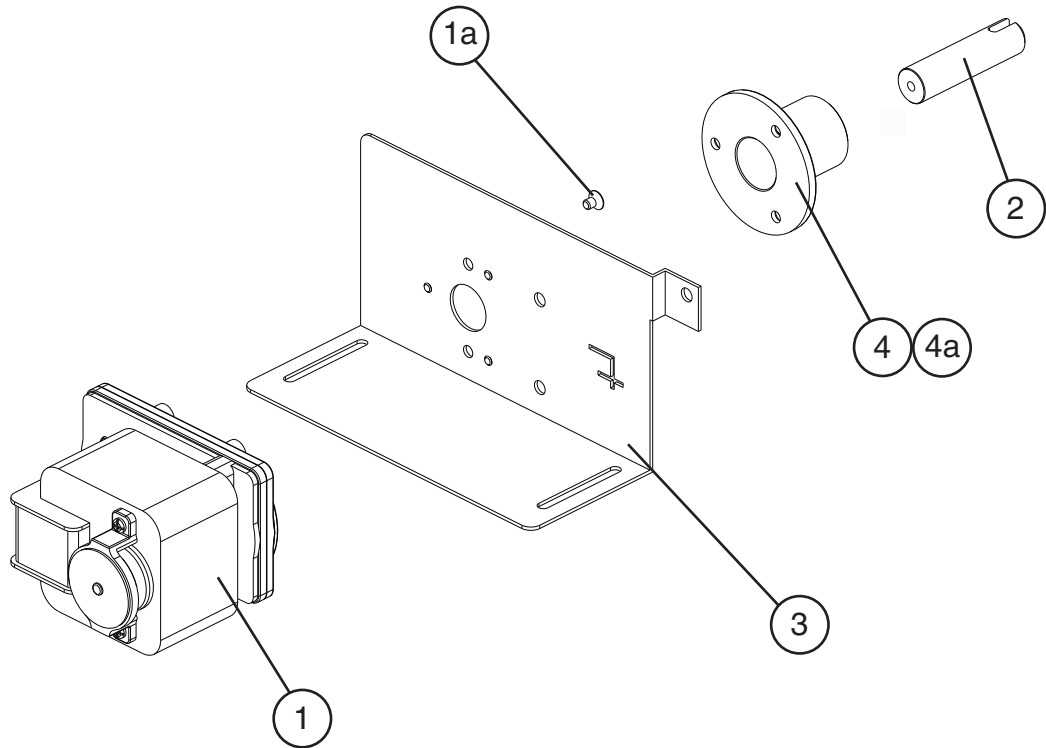
**H. Shutter Assembly**  
**DCM-500BAH-OS, DCM-500BWH-OS**  
M-0 to A-0



Title: **H. Shutter Assembly** Model: **DCM-500AH-OS, DCM-500BWH-OS**

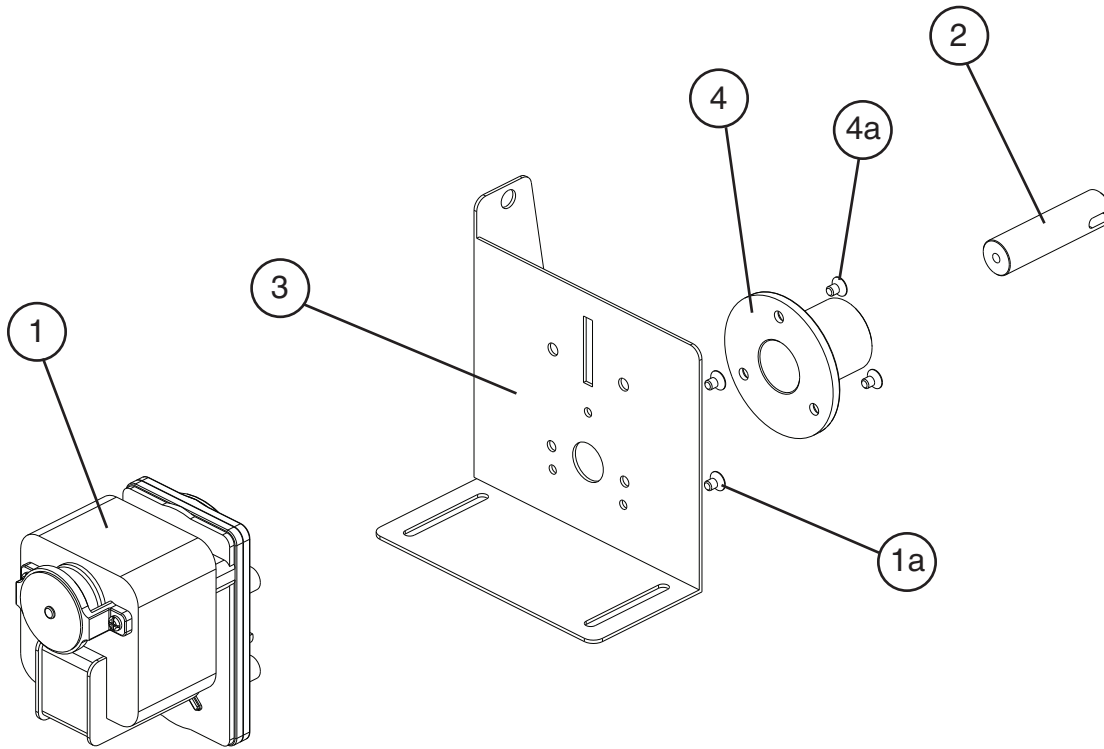
Index No.	Description	Material or Model Number	Part Number	Required Number									
				M-0 to A-0									
1	Base-Shutter	SS	3A1817-01	1									
2	Base (B)-Shutter	SS	3A1762-01	1									
2a	Truss Head Screw	4x8, SS	7C32-0408	2									
3	Solenoid		3U0095-01	1									
3a	Truss Head Screw	4x12, SS	7C32-0412	4									
3b	Solenoid Nut	SS	429723-01	2									
4	Solenoid Packing		430380-01	1									
5	Packing Cover	SS	431623-01	1									
6	Link		432232-01	1									
6a	Truss Head Screw	4x30, SS	7C32-0430	2									
6b	Self-Locking "U" Nut	M4, SS	7N22-0400	2									
7	Collar (D)	SS	432471-01	2									
8	Lever		3A1653G01	1									
8a	Truss Head Screw	4x30, SS	7C32-0430	1									
8b	Self-Locking "U" Nut	M4, SS	7N22-0400	1									
9	Collar (E)		432240-02	1									
10	Spring		432878-01	1									
11	R-C Capacitor		4A1012-01	1									
12	Truss Head Screw (GND)	4x8, SS	7C32-0408	2									
13	Hex Nut	M4, SS	7N12-0400	1									
14	Tooth Washer	M4, SS	7R22-0400	1									
15	Plastic Sleeve Insert		432235-01	2									

**J. Gear Motor Assembly (Agitator)**  
**DCM-500BAH-OS, DCM-500BWH-OS**  
M-0 to A-0



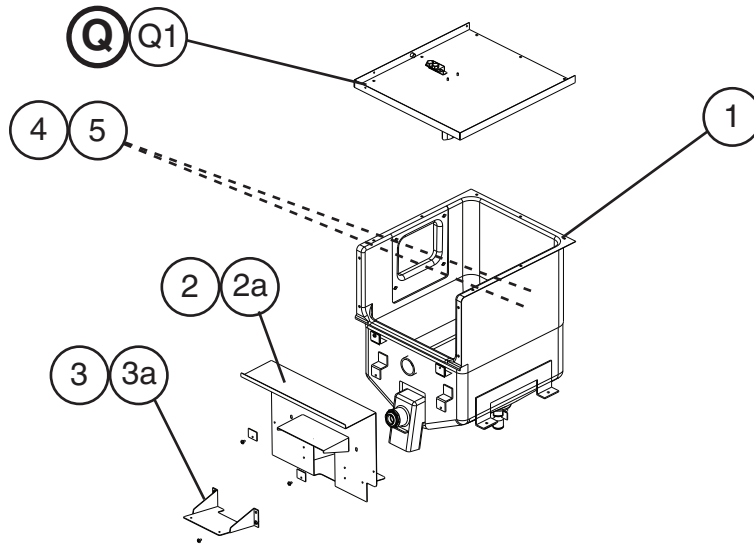
Title: J. Gear Motor Assembly (Agitator) Model: DCM-500BAH-OS, DCM-500BWH-OS													
Index No.	Description	Material or Model Number	Part Number	Required Number									
				M-0 to A-0									
1	Gear Motor		2U0080-01	1									
1a	Flat Head Screw	4x6, SS	7C22-0406	4									
2	Joint		429764-01	1									
3	Bracket (B1)-Gear Motor		4A0618-01	1									
4	Plastic Sleeve (A)		429761-01	1									
4a	Flat Head Screw	4x8, SS	7C22-0408	3									

**K. Gear Motor Assembly (Dispense)**  
**DCM-500BAH-OS, DCM-500BWH-OS**  
M-0 to A-0

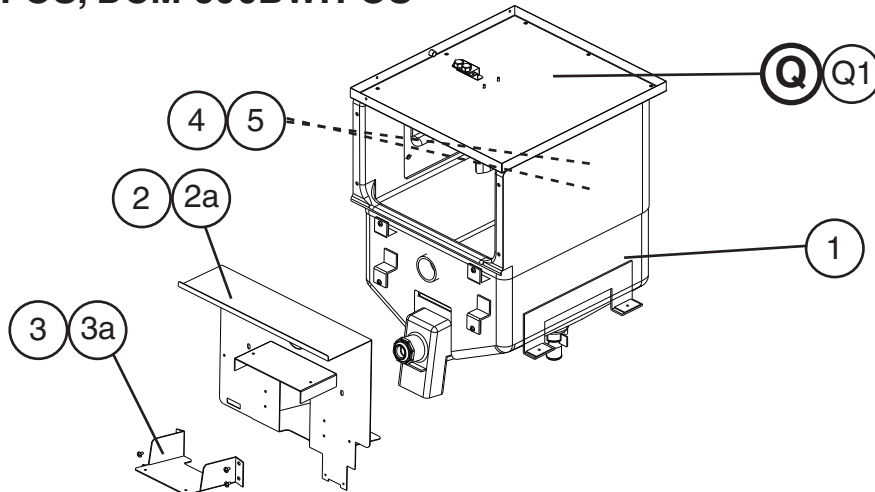


Title: K. Gear Motor Assembly (Dispense) Model: DCM-500BAH-OS, DCM-500BWH-OS															
Index No.	Description	Material or Model Number	Part Number	Required Number											
				M-0 to A-0											
1	Gear Motor		2U0080-03	1											
1a	Flat Head Screw	4x6, SS	7C22-0406	4											
2	Joint		429764-01	1											
3	Bracket (A3)-Gear Motor		3A0361-01	1											
4	Plastic Sleeve (A)		429761-01	1											
4a	Flat Head Screw	4x8, SS	7C22-0408	3											

**L. Bin Assembly**  
**DCM-500BAH-OS, DCM-500BWH-OS**  
M-0 to V-2

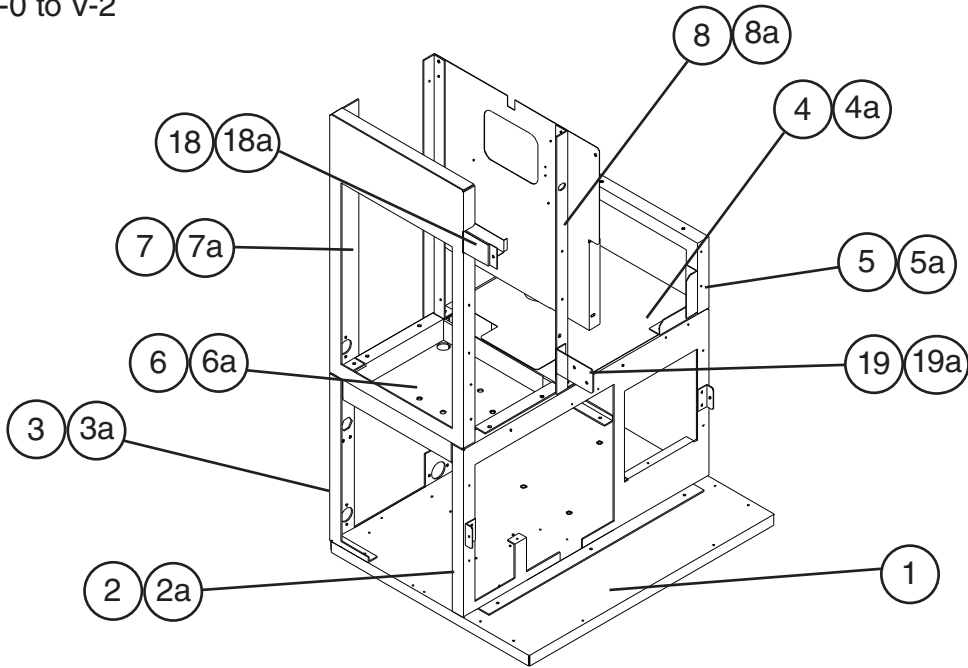


**L. Bin Assembly**  
**DCM-500BAH-OS, DCM-500BWH-OS**  
V-3 to A-0

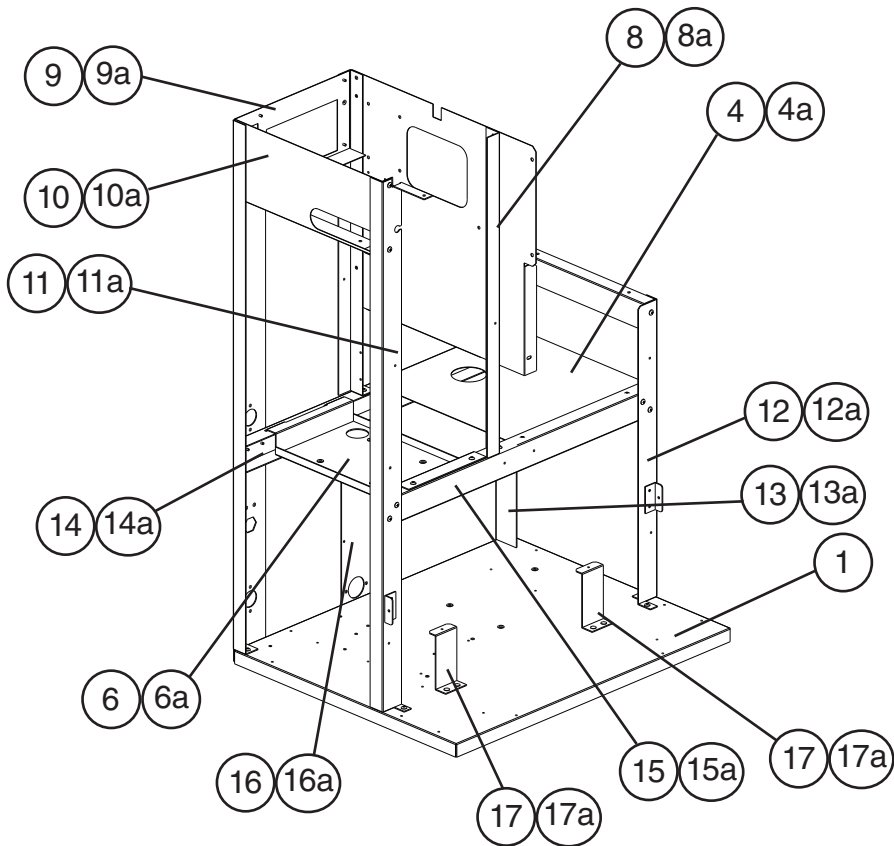


Title: L. Bin Assembly		Model: DCM-500BAH-OS, DCM-500BWH-OS		Required Number							
Index No.	Description	Material or Model Number	Part Number	M-0 to V-2	V-3 to A-0						
Q	Bin Top Assembly		3A1565A01	1	1						
Q1	Truss Head Screw	4x10, SS	7C32-0410	7	7						
1	Foamed Bin		103687G01	1	1						
2	Barrier		2A2008G01	1	-						
			2A5487G01		1						
2a	Truss Head Screw	4x8 SS	7C32-0408	3	3						
3	Sliding Bracket	SS	3A0364-01	1	1						
3a	Truss Head Screw	4x8, SS	7C32-0408	4	4						
4	Shaft Holder (C)		429818-01	2	2						
5	"O" Ring		7616-P032	2	2						

**M. Frame Assembly**  
**DCM-500BAH-OS, DCM-500BWH-OS**  
 M-0 to V-2



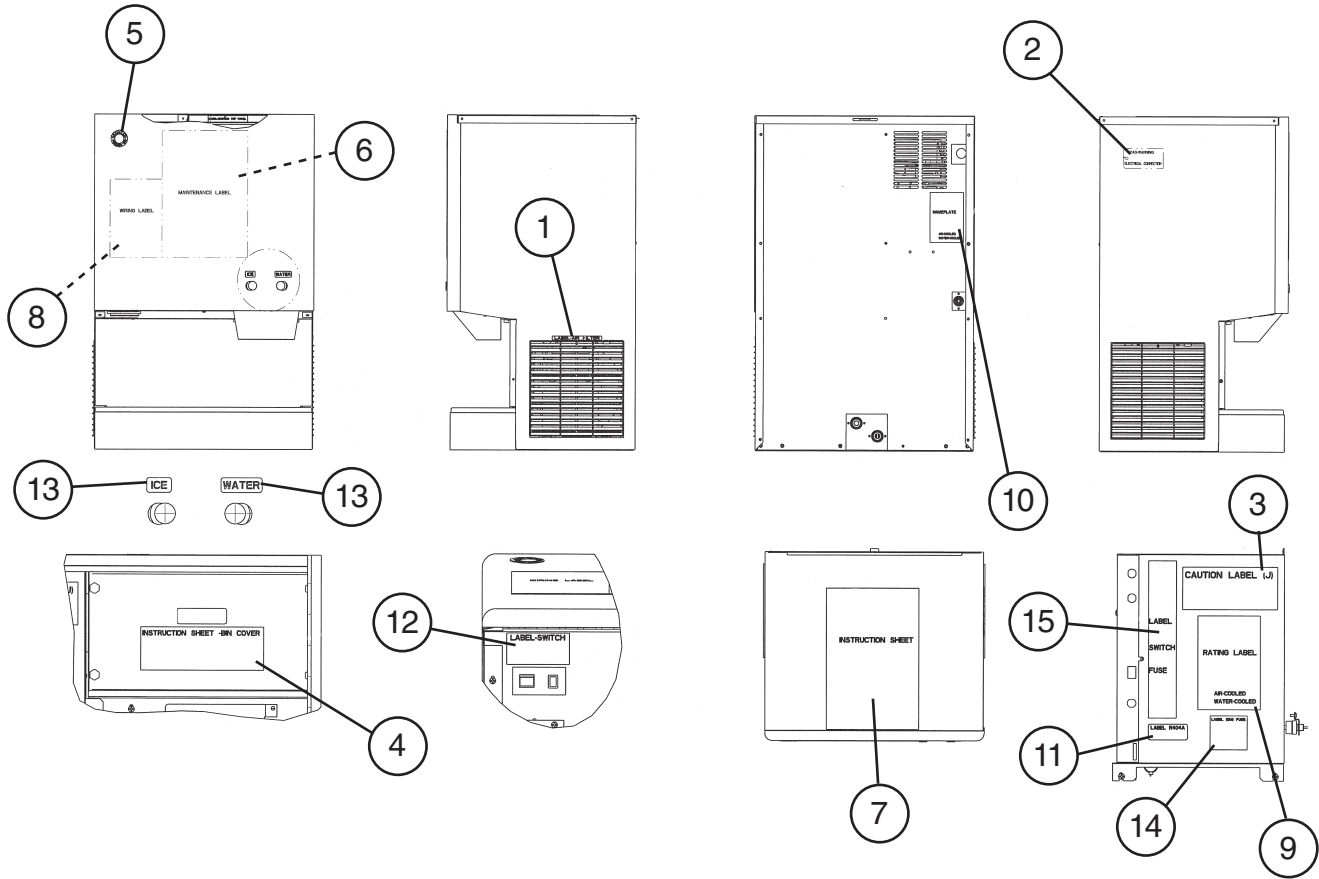
**M. Frame Assembly**  
**DCM-500BAH-OS, DCM-500BWH-OS**  
 V-3 to A-0





Title: <b>M. Frame Assembly</b> Model: <b>DCM-500BAH-OS, DCM-500BWH-OS</b>													
Index No.	Description	Material or Model Number	Part Number	Required Number									
				M-0 to V-2	V-3 to A-0								
1	Base	GS	3A0614G01	1	-								
			3A5637G01		1								
2	Front Frame	GS	2A0665G01	1	-								
2a	FT Screw	4x8, SS	7F32-0408	3	-								
3	Rear Frame	DCM-500BAH-OS	2A2742-01	1	-								
		DCM-500BWH-OS	2A0666-01	1	-								
3a	FT Screw	4x8, SS	7F32-0408	3	-								
4	Separator	GS	3A0615-01	1	-								
			3A5656-01		1								
4a	Truss Head Screw	4x8	7C31-0408	2	-								
	FT Screw	4x8, SS	7F32-0408		4								
5	Side Frame-R	GS	2A4116-01	1	-								
5a	Truss Head Screw	4x8	7C31-0408	5	-								
6	Drain Pan Bracket Assembly	GS	2A0667G01	1	-								
			2A5389G01		1								
6a	Truss Head Screw	4x8	7C31-0408	4	-								
	FT Screw	4x8, SS	7F32-0408		2								
7	Side Frame (Up)	GS	3A0616G01	1	-								
7a	Truss Head Screw	4x8	7C31-0408	4	-								
8	Center Panel	GS	3A0617G01	1	-								
			3A5810G02		1								
8a	Truss Head Screw	4x8	7C31-0408	2	-								
	FT Screw	4x8, SS	7F32-0408		2								
9	Side Frame A	GS	3A5639-01		1								
9a	FT Screw	4x8, SS	7F32-0408		4								
10	Side Frame B	GS	3A5641-01		1								
10a	FT Screw	4x8, SS	7F32-0408		6								
11	Side Frame Assembly C	GS	3A5768G01		1								
11a	FT Screw	4x8, SS	7F32-0408		2								
12	Side Frame Assembly D	GS	3A5769G01		1								
12a	FT Screw	4x8, SS	7F32-0408		3								
13	Side Frame Assembly E	GS	3A5809G01		1								
13a	FT Screw	4x8, SS	7F32-0408		3								
14	Frame A	GS	3A5644-01		1								
14a	FT Screw	4x8, SS	7F32-0408		5								
15	Frame B	GS	3A5645-01		1								
15a	FT Screw	4x8, SS	7F32-0408		4								
16	Center Frame A	GS	3A5646-01		1								
16a	FT Screw	4x8, SS	7F32-0408		4								
17	Drip Tray Bracket		3A5667-01		2								
17a	FT Screw	4x8, SS	7F32-0408		4								
18	Water Valve Bracket		3A5678-01	1	-								
18a	FT Screw	4x8, SS	7F32-0408	1	-								
19	Bracket	DCM-500BAH-OS	4A1548-01	1	-								
19a	FT Screw	4x8, SS	7F32-0408	2	-								

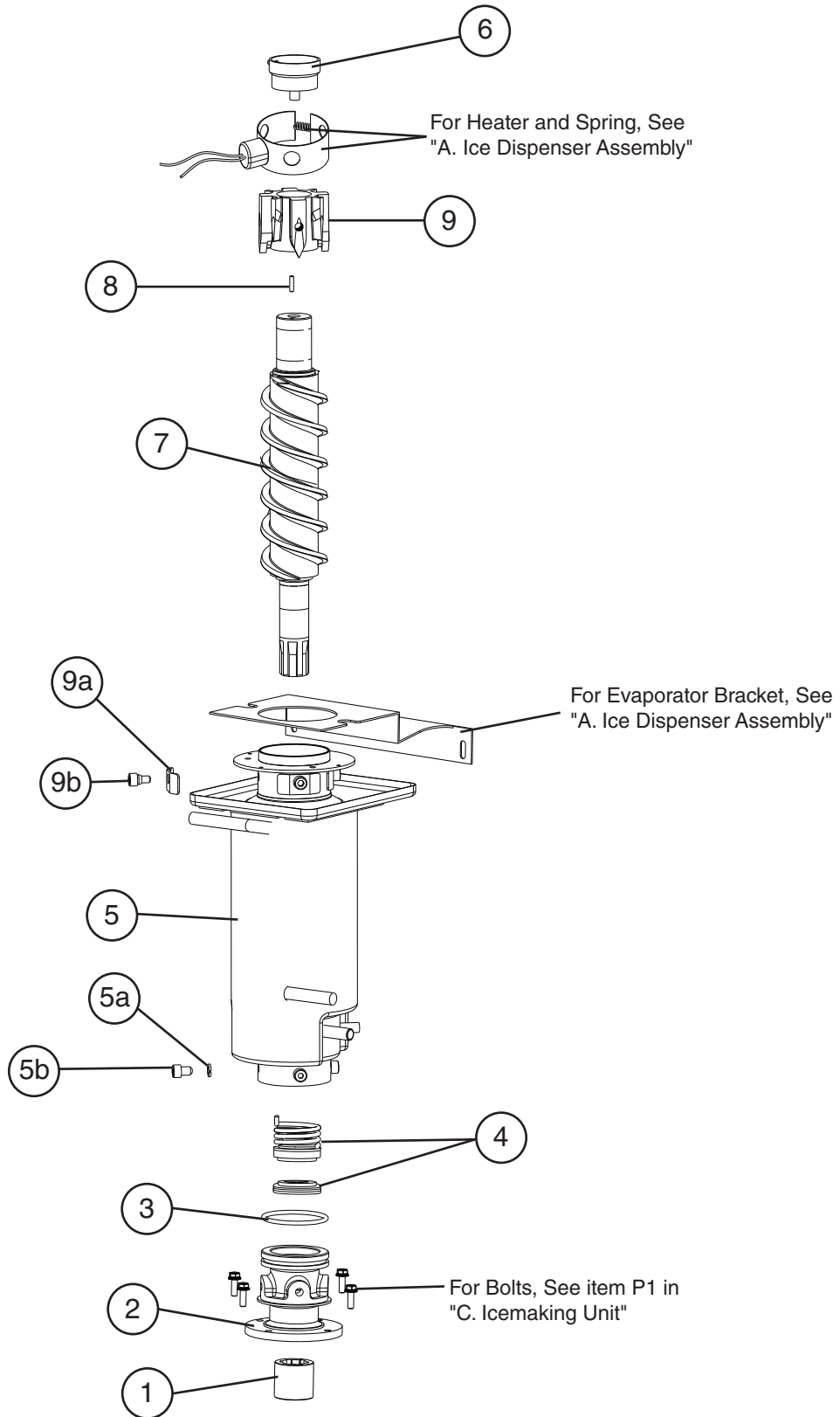
**N. Label Location**  
**DCM-500BAH-OS, DCM-500BWH-OS**  
 M-0 to A-0



Title: **N. Label Location** Model: **DCM-500BAH-OS, DCM-500BWH-OS**

Index No.	Description	Material or Model Number	Part Number	Required Number																		
				M-0 to Q-1	R-0 S-0	S-1 T-0	T-1 to V-0	V-2 to V-5	A-0													
1	Label-Air Filter	<b>DCM-500BAH</b>	426177-01	1	1	1	1	1	1													
2	Tag-Warning Electrical Connection		435005-01	1	1	1	1	1	1	-												
			4A4766-01									1										
3	Caution Label (J)		439149-01	1	1	1	1	1	1	1												
4	Instruction Sheet-Bin Cover		446463-01	1	1	1	1	1	1	1												
5	Label Penguin-HA-R		456246-01	1	1	1	1	1	1	1												
6	Maintenance Label		2A4562-01	1	1	1	1	1	1	1												
7	Instruction Sheet		2A4563-01	1	1	1	1	1	1	1												
8	Wiring Label		3A2562-01	1	-																	
			3A3872-01		1	-																
			3A4614-01				1	1	-													
			3A5925-01								1	1										
9	Rating Label	<b>DCM-500BAH</b>	3A2564-01	1	1	-																
			3A4612-01				1	1	-													
			3A5950-01								1	1										
		<b>DCM-500BWH</b>	3A2564-02	1	1	-																
			3A4612-02				1	1	-													
			3A5950-02							1	1											
10	Nameplate	<b>DCM-500BAH</b>	3A2563-01	1	1	-																
			3A4613-01				1	1	-													
			3A5949-01								1	1										
		<b>DCM-500BWH</b>	3A2563-02	1	1	-																
			3A4613-02				1	1	-													
			3A5949-02									1	1									
11	Label-R404A		4A0960-01	1	1	1	1	1	1	1												
12	Switch Label		4A1038-01	1	1	1	1	1	1	1												
13	Ice-Water Label		4A2954-01	1	1	1	1	1	1	1												
14	Fuse Label (GM)		4A4278-01	1	1	1	1	1	1	1												
15	Switch/Fuse Label		4A1879-01	1	-																	
			4A3963-01		1	-																
			4A4393-01				1	1	1	1	1											

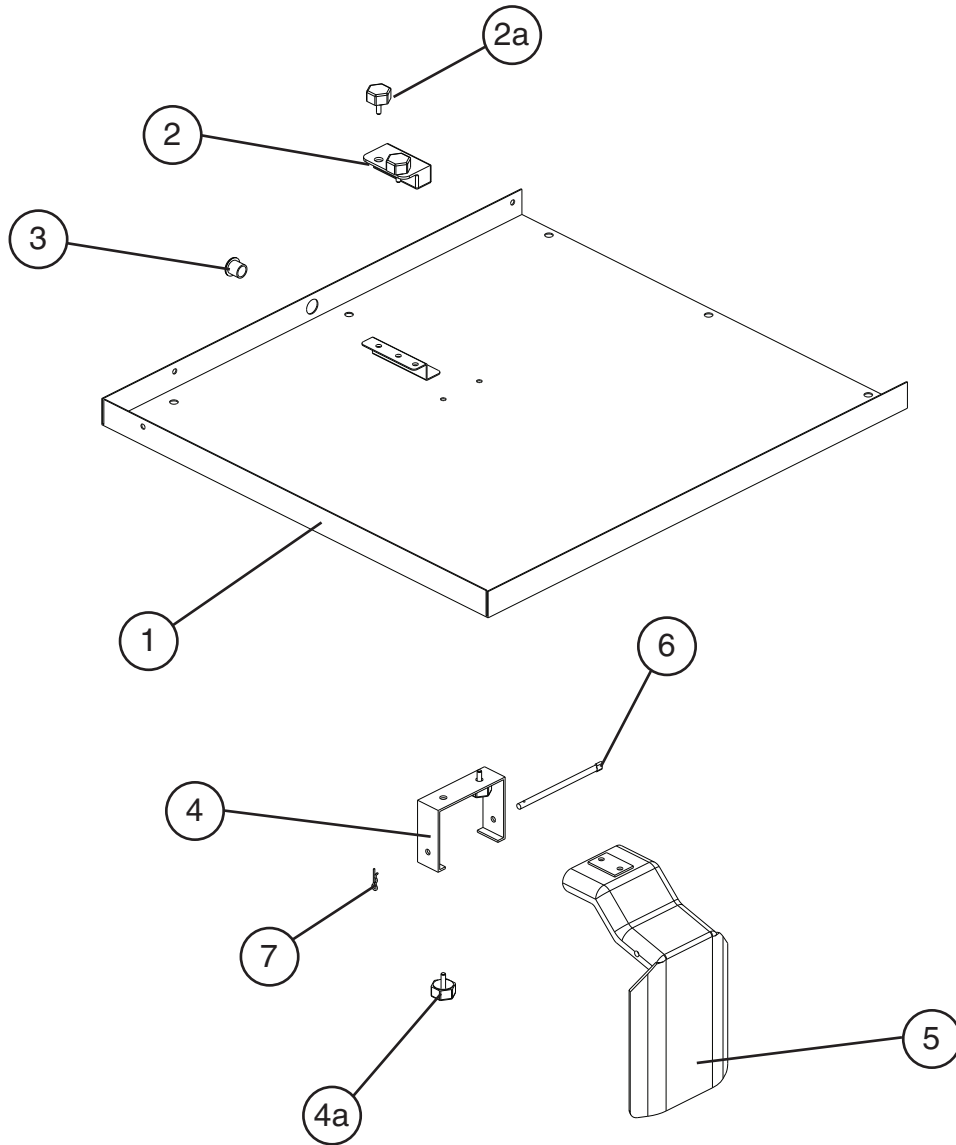
**P. Evaporator Assembly**  
**DCM-500BAH-OS, DCM-500BWH-OS**  
M-0 to A-0



Title: **P. Evaporator Assembly** Model: **DCM-500BAH-OS, DCM-500BWH-OS**

Index No.	Description	Material or Model Number	Part Number	Required Number												
				M-0 to N-0	N-1 to Q-0	Q-1 to T-0	T-1 to V-3	V-4 to A-0								
1	Spline Coupling		4A1297-01	1	-											
			4A3204-01		1	1	1	1								
2	Housing (for mounting hardware, see item P1 in "C. Icemaking Unit")		2A0947G01	1	1	1	1	1								
3	"O" Ring		7616-G065	1	1	1	-									
			4A4755-02				1	1								
4	Mechanical Seal		432492-01	1	1	1	1	1								
5	Evaporator		2A1733G01	1	-											
			2A3314G01		1	1	1	1								
5a	Split Lock Washer	M8, SS	7L22-0800	4	4	4	4	4								
5b	Allen Head Cap Screw	8x12, SS	7S12-0812	4	4	4	4	4								
6	Cutter		427183G01	1	1	1	1	1								
7	Auger (includes item 8)		2A0932G01	1	-											
			2A2151G03		1	1	-									
			1A1541G02				1	-								
			1A2037G02						1							
8	Dowel Pin		713S-0416	1	1	1	1	1								
9	Extruding Head		216530G04	1	1	1	1	1								
9a	Washer		427184-01	4	4	4	4	4								
9b	Allen Head Cap Screw	M8	P01768-01	4	4	4	4	4								

**Q. Bin Top Assembly**  
**DCM-500BAH-OS, DCM-500BWH-OS**  
 M-0 to A-0



Title: <b>Q. Bin Top Assembly</b> Model: <b>DCM-500BAH-OS, DCM-500BWH-OS</b>					Required Number									
Index No.	Description	Material or Model Number	Part Number	M-0 to A-0										
1	Bin Top Cover	SS	2A1716G01	1										
2	Proximity Switch		4A2033-01	1										
2a	Thumbscrew		415949G08	2										
3	Bushing		420470-07	1										
4	Hinge	SS	3A0762-01	1										
4a	Thumbscrew		415949G08	2										
5	Actuator		208795G01	1										
6	Shaft		412337-03	1										
7	Snap Pin	SS	715S-0004	1										

**R. Accessories & Packaging**  
**DCM-500BAH-OS, DCM-500BWH-OS**  
M-0 to A-0

Title: <b>R. Accessories &amp; Packaging</b> Model: <b>DCM-500BAH-OS, DCM-500BWH-OS</b>												
Index No.	Description	Material or Model Number	Part Number	Required Number								
				M-0 to A-0								
1	Instruction Manual		91A2EE10C	1								
	Packaging		1A0190G06									