

# B-1150SS (1300/1500/1650) ICE STORAGE BINS

Item # \_\_\_\_\_

Project: \_\_\_\_\_

Qty: \_\_\_\_\_

\*AutoCad available on KCL

**B-1150SS  
(1300/1500/1650)**

10/10

Item # 13178

## BIN DIMENSIONS W x D x H

**B-1150SS**  
48 x 41 x 60\*

**B-1300SS**  
48 x 41 x 66\*

**B-1500SS**  
60 x 41 x 62\*

**B-1650SS**  
60 x 41 x 66\*

\*with 6" legs

Depth includes 10"  
for door installation



**B-1150SS**

Shown



**B-1300SS**

Shown



**B-1500SS**

Shown



**B-1650SS**

Shown

- Available in the stainless steel "SS" exterior style
- SS = Stainless steel front, sides, back and bottom
- Easy cleaning and long lasting attractive appearance
- Seamless polyethylene bin liner
- Foamed-in-place polyurethane insulation, in all bin walls and bottom, which provides maximum ice preservation
- New baffle design increases ice accessibility by 30%
- View windows provide instant inspection and thermal break
- Pouch style insulated door prevents condensation while providing maximum access and minimal spillage
- Sealed door gasket reduces risk of airborne bacteria
- All bins include Universal Top Kit - note application guide to verify fit
- 6" adjustable stainless steel legs
- 82 oz. scoop - Protected by *HoshiGuard* Antimicrobial Agent **HOSHIGUARD**



### Warranty

Valid in United States, Canada, Puerto Rico, & U.S. Territories. Contact factory for warranty in other countries.

**Five Year - Parts & Labor.**



# Hoshizaki

## DIMENSIONS

W x D x H

**B-1150SS**  
48 x 41 x 60"

**B-1300SS**  
48 x 41 x 66"

**B-1500SS**  
60 x 41 x 62"

**B-1650SS**  
60 x 41 x 66"  
\*with 6" legs

## ICE STORAGE BINS

- Ice storage capacity from 1150 lbs. to 1605 lbs.
- Available in stainless steel "SS" exterior style
- "SS" = Stainless steel front, back, sides and bottom
- Depth includes 10" for door installation

## B-1150SS (1300/1500/1650) ICE STORAGE BINS

### SPECIFICATIONS

Model #	Ice Storage Capacity	Shipping Weight
B-1150SS	1150	345
B-1300SS	1275	365
B-1500SS	1500	395
B-1650SS	1605	415

### ICE MACHINE MODEL APPLICATION

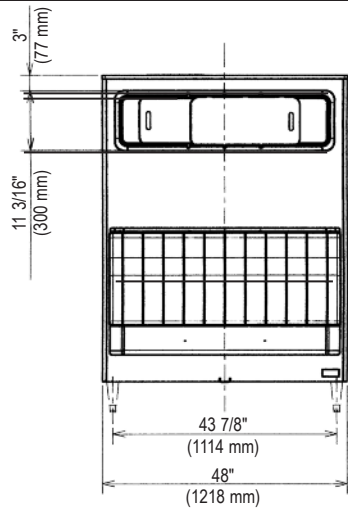
Width for Ice Machine	48" Width Bin B-1150/1300SS	60" Width Bin B-1500/1650SS
22"	KM-320M KM-515M KM-650M F-450M F-801M F-1001M Universal Top Kit	N/A
30"	KM-901M KM-1340M KM-1601M KML Series F-1500M F-2000M KMD/KMS Series* Universal Top Kit	Universal Top Kit Need HS-2111
42"	KMD-901MAH Universal Top Kit	N/A
44"	2 KM-320M 2 KM-515M 2 KM-650M 2 F-450M 2 F-801M 2 F-1001M N/A	Universal Top Kit
48"	KM-1301S KM-1400S KM-1601S KM-1900S KM-2000S KM-2100S KM-2400S KM-2500S Universal Top Kit	Universal Top Kit
60"	2 KM-901M 2 KM-1340M 2 KM-1601M 2 KML Series 2 KMD Series* 2 F-1500M 2 F-2000M NOT AVAILABLE N/A	NOT AVAILABLE Universal Top Kit

\* Excludes KMD-901MAH

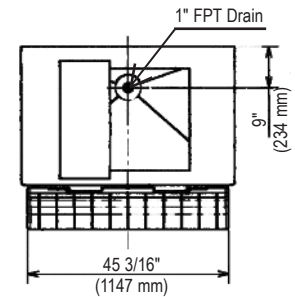
• The B-1150SS, B-1300SS, B-1500SS and B-1650SS are equipped with a universal top kit

### PLUMBING

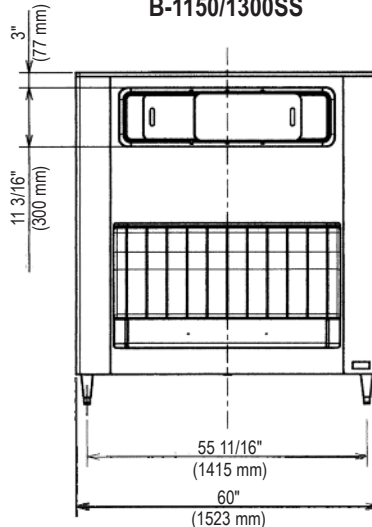
- 1" FPT Drain



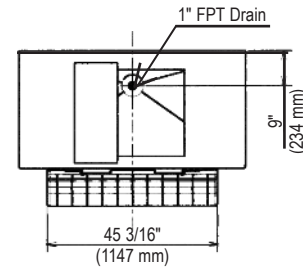
FRONT VIEW  
B-1150/1300SS



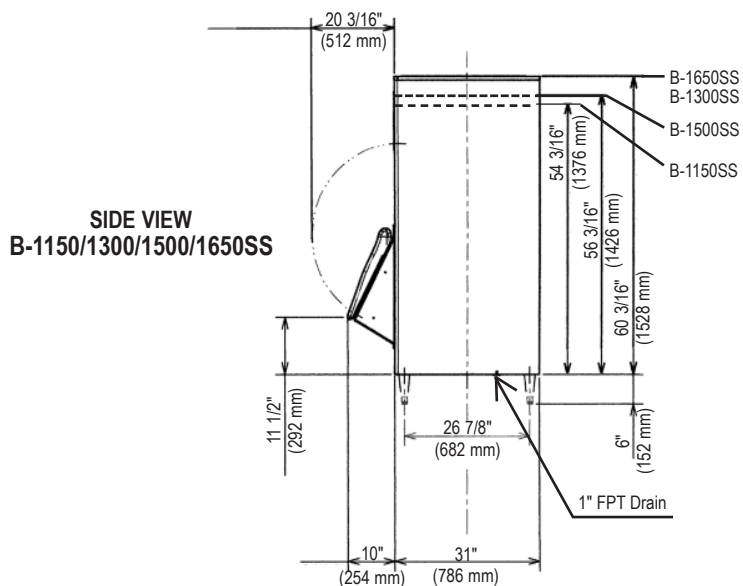
TOP VIEW  
B-1150/1300SS



FRONT VIEW  
B-1500/1650SS



TOP VIEW  
B-1500/1650SS



SIDE VIEW  
B-1150/1300/1500/1650SS



© HOSHIZAKI AMERICA, INC.

618 Hwy. 74 S., Peachtree City, GA 30269

TEL 1-800-438-6087

FAX 1-800-345-1325

www.hoshizaki.com

Printed in U.S.A.

