

NO. 71194

ISSUED: OCT. 9, 2001



**HOSHIZAKI  
MODULAR FLAKER**



**MODEL  
F-450MAH(-C)**

**PARTS LIST**

**F-450MAH**      L-0    April, 2001

**F-450MAH-C**      L-0    April, 2001

## MATERIAL ABBREVIATIONS

### ALUMINUM

AL = Aluminum

### COPPER

CU = Copper

### PLASTIC

ABS = Acrylonitrile -butadiene - styrene  
 AC = Polyacetal  
 EVA = Ethylene vinyl acetate  
 PA = Polyamide = Nylon  
 PC = Polycarbonate  
 PE = Polyethylene  
 PES = Polyester  
 PETP = Polyethylene terephthalate = Tetlon  
 PP = Polypropylene  
 PS = Polystyrene  
 PTFE = Polytetrafluoroethylene = Teflon  
 PUR = Polyurethane  
 PVC = Polyvinyl chloride

### RUBBER

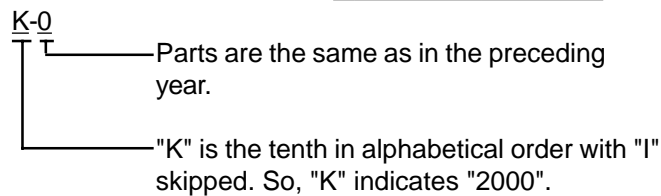
VN = Vinyl Nitrile  
 EPDM = EP rubber  
 NBR = Nitrile butadiene rubber  
 NR = Natural rubber  
 NP = Neoprene  
 SI.R = Silicone rubber  
 SY.R = Synthetic rubber  
 EPH = Epichlorohydrin

### STEEL

GS = Galvanized steel  
 SS = Stainless steel  
 PS = Plated steel  
 PAS = Primed steel

## AUXILIARY CODE

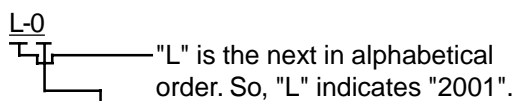
Ex.1



**(Note)** - = Part deleted.

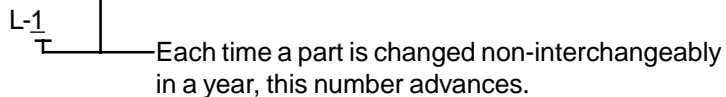
x = Part deleted and replaced by "o" (interchangeable) part.

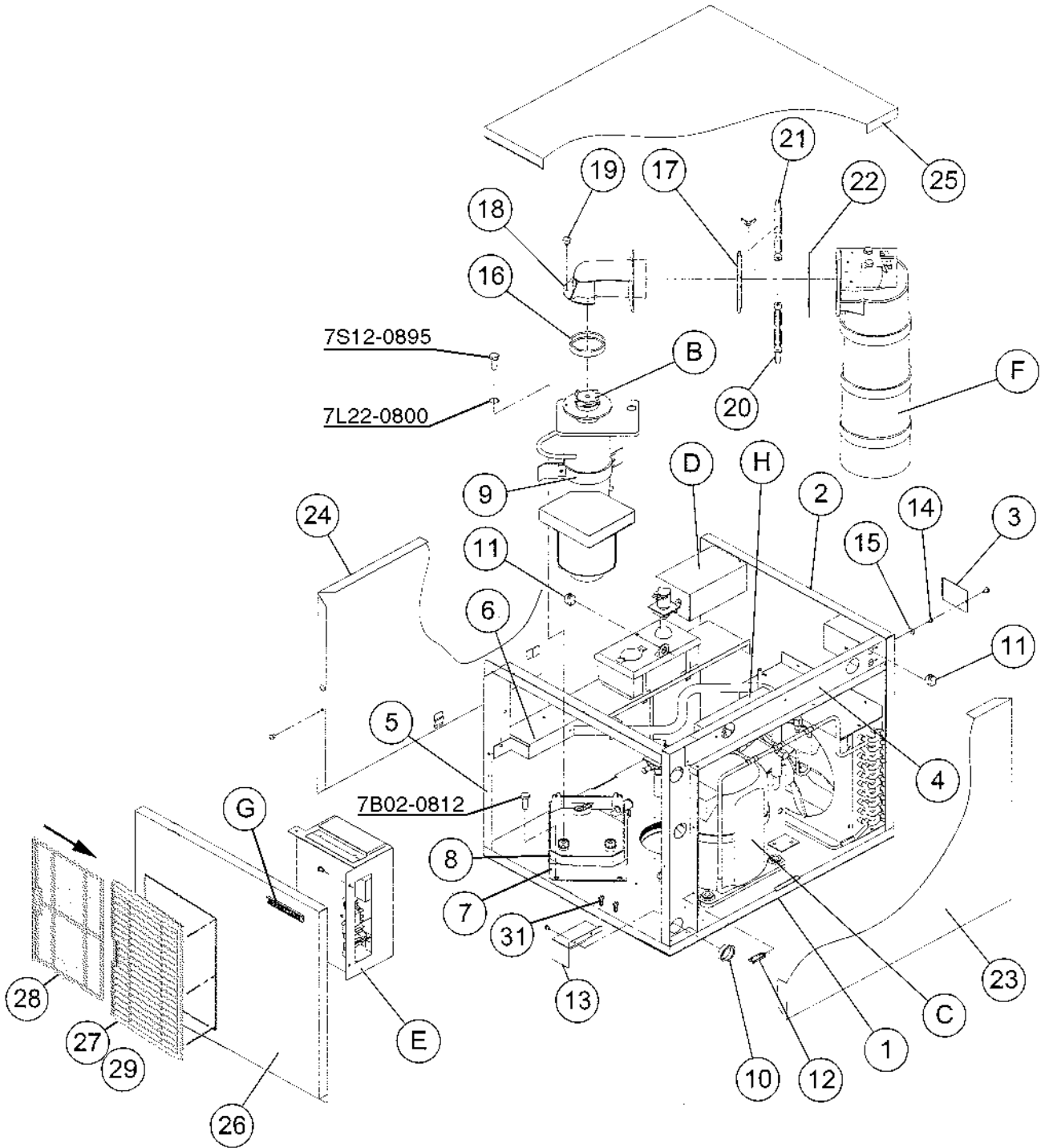
Ex.2



o = New part for "x" in the same auxiliary code.

Ex.3





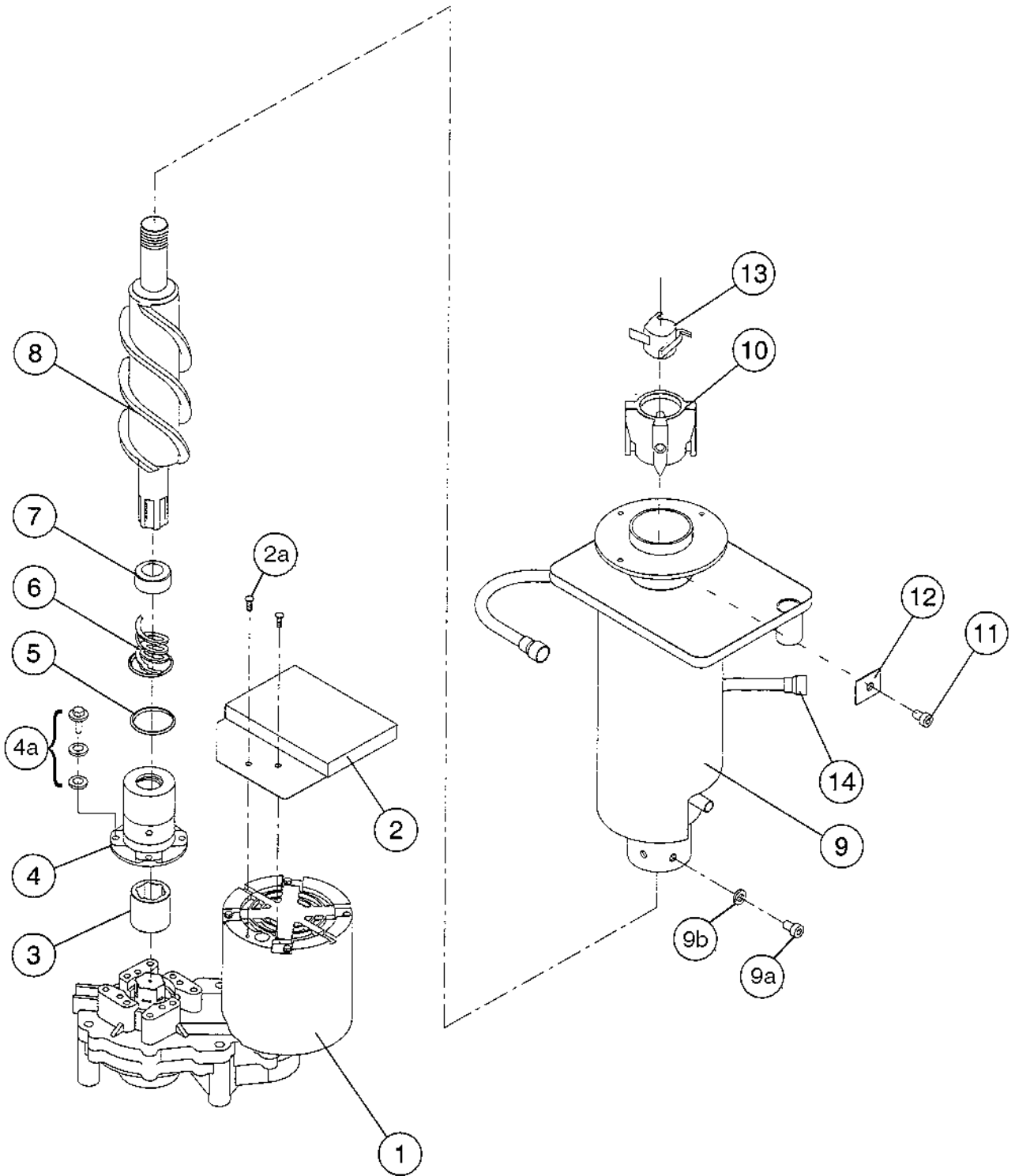




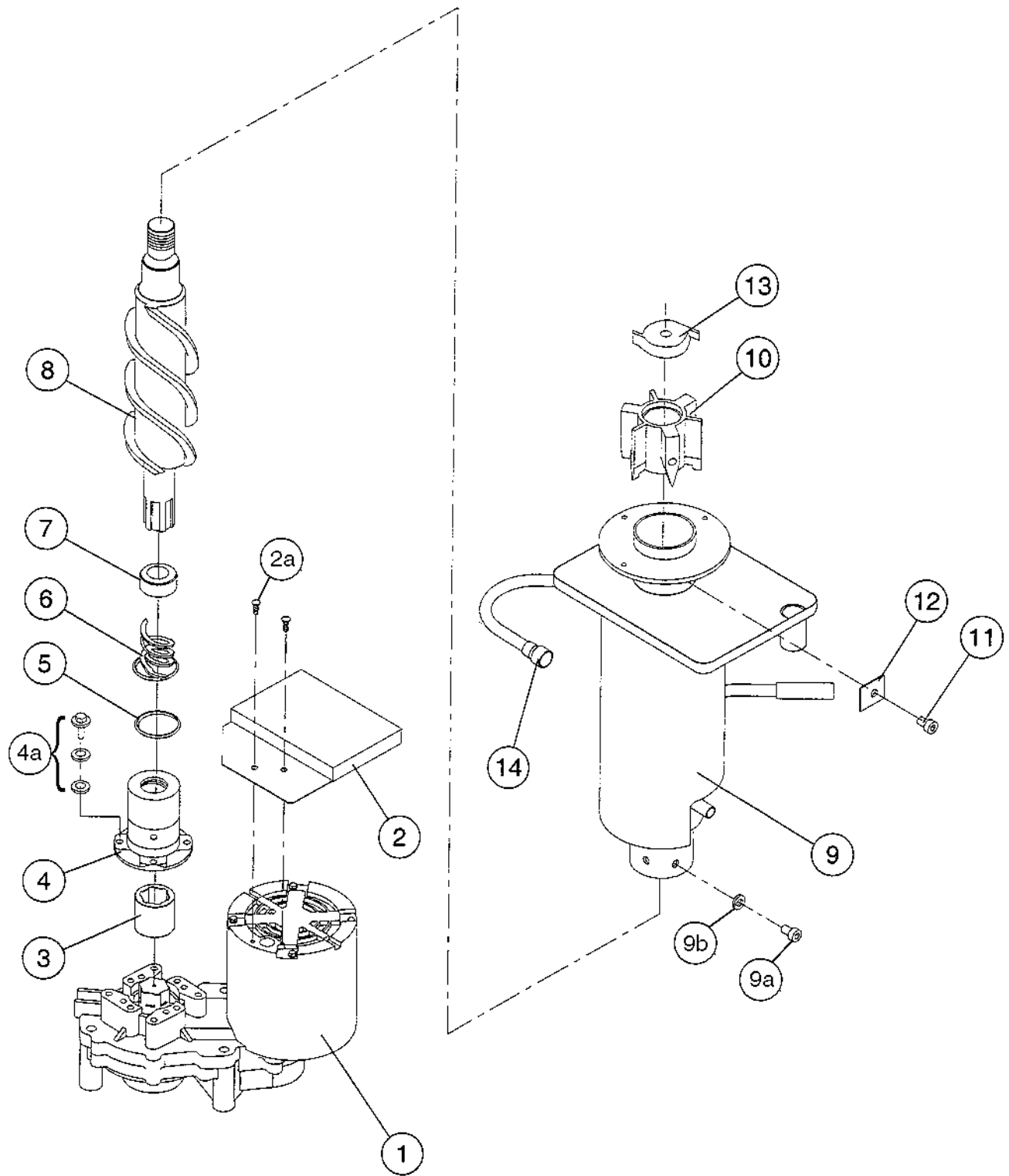
| MODEL: F-450MAH/-C TITLE: A. ICE FLAKER ASSEMBLY |                      |                          |             |                 |  |  |  |  |  |
|--|----------------------|--------------------------|-------------|-----------------|--|--|--|--|--|
| INDEX NO.  | DESCRIPTION          | MATERIAL OR MODEL NUMBER | PART NUMBER | REQUIRED NUMBER |  |  |  |  |  |
|  |                      |                          |             | L-0             |  |  |  |  |  |
| 1  | CHASSIS              | GS                       | 2A1178G01   | 1               |  |  |  |  |  |
| 2  | REAR PANEL           | GS                       | 2A0916G01   | 1               |  |  |  |  |  |
|  | TRUSS HEAD SCREW     | SS, 4 x 8                | 7C31-0408   | 2               |  |  |  |  |  |
| 3  | JUNCTION BOX COVER   | GS                       | 433410-01   | 1               |  |  |  |  |  |
|  | T2 SCREW             | 4 x 8                    | 7P31-0408   | 1               |  |  |  |  |  |
| 4  | SIDE FRAME (R)       | GS                       | 2A0917G01   | 1               |  |  |  |  |  |
|  | TRUSS HEAD SCREW     | 4 x 8                    | 7C31-0408   | 4               |  |  |  |  |  |
| 5  | FRONT FRAME          | GS                       | 2A0918G01   | 1               |  |  |  |  |  |
|  | TRUSS HEAD SCREW     | 4 x 8                    | 7C31-0408   | 4               |  |  |  |  |  |
| 6  | BRACKET - RESERVOIR  | GS                       | 2A0919G01   | 1               |  |  |  |  |  |
|  | T2 SCREW             | 4 x 8                    | 7P31-0408   | 4               |  |  |  |  |  |
| 7  | BRACKET - GEAR MOTOR | GS                       | 3A0396G01   | 1               |  |  |  |  |  |
|  | HEX BOLT             | SS, 8 x 12               | 7B02-0812   | 2               |  |  |  |  |  |
| 8  | DRAIN PAN            | ABS                      | 323765G02   | 1               |  |  |  |  |  |
| 9  | STRAP                | GS                       | 4A1262-01   | 1               |  |  |  |  |  |
|  | T3 SCREW             | 5 x 12                   | 7G31-0512   | 2               |  |  |  |  |  |
| 10   | BUSHING              | SB-1500-21               | 420470-06   | 4               |  |  |  |  |  |
| 11   | BUSHING              | SB-1500-21               | 420472-03   | 2               |  |  |  |  |  |
| 12   | WIRE SADDLE          | LWS-4NS                  | 4A0338-04   | 9               |  |  |  |  |  |
| 13   | BARRIER              | GS                       | 4A0688-01   | 1               |  |  |  |  |  |
|  | FT SCREW             | SS, 4 x 8                | 7F32-0408   | 2               |  |  |  |  |  |
| 14   | SCREW - GROUNDING    | BRASS                    | 433304-02   | 1               |  |  |  |  |  |
| 15   | SQUARE WASHER        | BRASS                    | 433537-02   | 1               |  |  |  |  |  |
| 16   | PACKING              | EPDM                     | 427151-01   | 1               |  |  |  |  |  |
| 17   | PACKING – SPOUT      | EPDM                     | 321037-01   | 1               |  |  |  |  |  |
| 18   | SPOUT                | PC                       | 2A0915-01   | 1               |  |  |  |  |  |
| 19   | THUMBSCREW           | SS, ABS                  | 415949G04   | 3               |  |  |  |  |  |
| 20   | STRAP                | SS                       | 321038G02   | 1               |  |  |  |  |  |
| 21   | STRAP                | SS                       | 328703-02   | 1               |  |  |  |  |  |
|  | WING NUT             | SS, 6                    | 7E12-0600   | 2               |  |  |  |  |  |



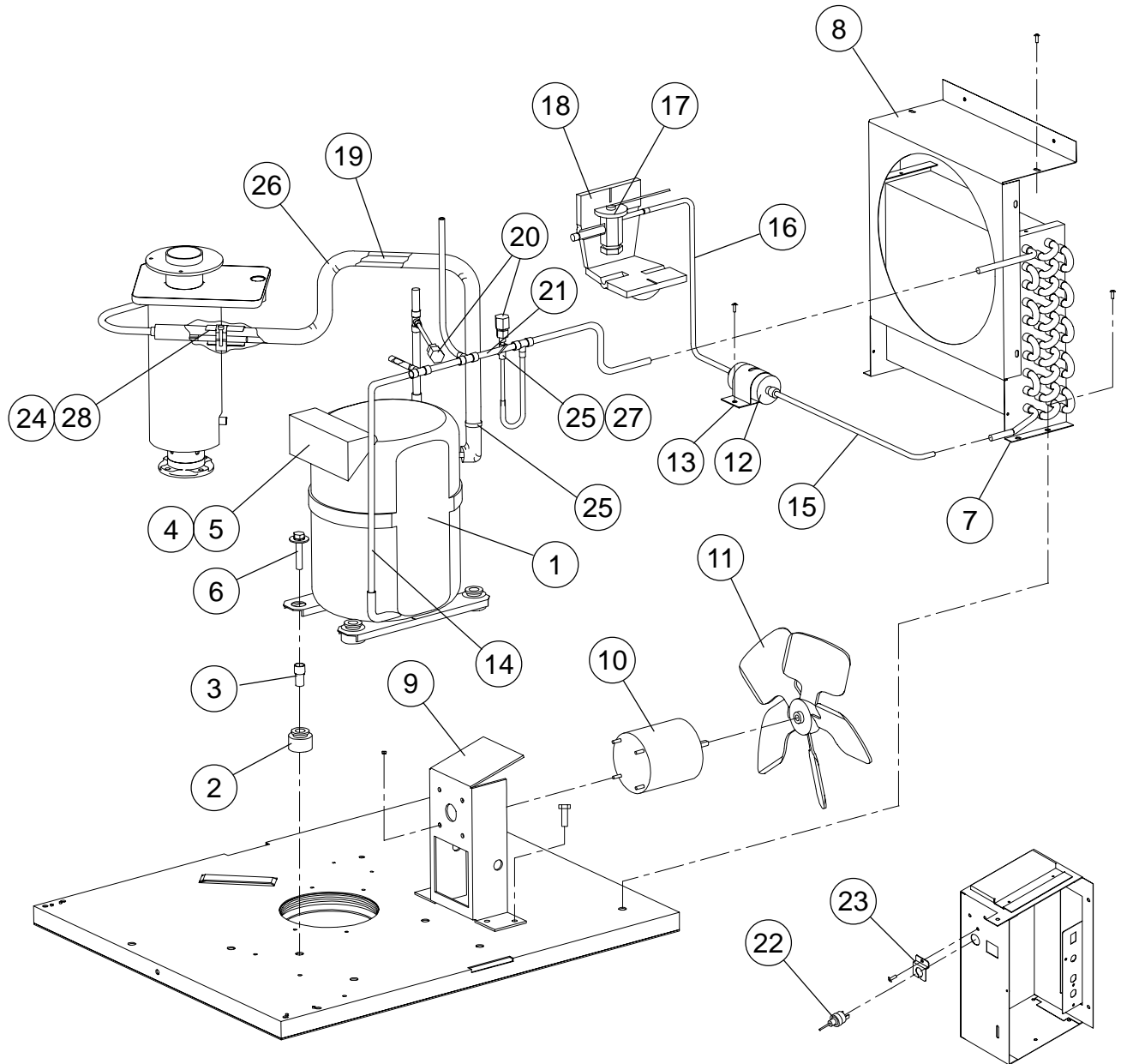




| MODEL: F-450MAH TITLE: B. EVAPORATOR ASSEMBLY |                       |                          |             |                 |  |  |  |  |  |  |
|---|-----------------------|--------------------------|-------------|-----------------|--|--|--|--|--|--|
| INDEX NO.                                     | DESCRIPTION           | MATERIAL OR MODEL NUMBER | PART NUMBER | REQUIRED NUMBER |  |  |  |  |  |  |
|   |                       |                          |             | L-0             |  |  |  |  |  |  |
| 1   | GEAR MOTOR            | V06695AIAA               | 4A2193-01   | 1               |  |  |  |  |  |  |
| 2   | BARRIER - GEAR MOTOR  | GS                       | 3A1037-01   | 1               |  |  |  |  |  |  |
| 2a  | FT SCREW              | SS, 4 x 8                | 7F32-0408   | 2               |  |  |  |  |  |  |
| 3   | COUPLING – SPLINE     | SS                       | 418316-01   | 1               |  |  |  |  |  |  |
| 4   | HOUSING               | BRASS                    | 206013G03   | 1               |  |  |  |  |  |  |
| 4a  | BOLT                  | 6 X 20                   | 458660-01   | 4               |  |  |  |  |  |  |
| 5   | “O” RING              | G40                      | 7616-G040   | 1               |  |  |  |  |  |  |
| 6   | MECHANICAL SEAL       | HK9A-MS φ22              | 432491-01   | 1               |  |  |  |  |  |  |
| 7   | RING (B)              | NTKU-4                   | 432494-01   | 1               |  |  |  |  |  |  |
| 8   | AUGER                 | SS                       | 341448G01   | 1               |  |  |  |  |  |  |
| 9   | EVAPORATOR            | -                        | 2A1699G01   | 1               |  |  |  |  |  |  |
| 9a  | SOCKET HEAD CAP SCREW | SS, 6 x 10               | 7S12-0610   | 4               |  |  |  |  |  |  |
| 9b  | SPLIT LOCK WASHER     | SS, 6                    | 7L22-0800   | 4               |  |  |  |  |  |  |
| 10  | EXTRUDING HEAD – 45F  | SS                       | 340077G01   | 1               |  |  |  |  |  |  |
| 11  | SOCKET HEAD CAP SCREW | SS, 8 x 14               | 429121-01   | 3               |  |  |  |  |  |  |
| 12  | WASHER                | SS                       | 453791-01   | 3               |  |  |  |  |  |  |
| 13  | CUTTER                | SS                       | 453790-01   | 1               |  |  |  |  |  |  |
| 14  | REDUCER               | COPPER                   | 420915-06   | 1               |  |  |  |  |  |  |
|   |                       |                          |             |                 |  |  |  |  |  |  |
|   |                       |                          |             |                 |  |  |  |  |  |  |
|   |                       |                          |             |                 |  |  |  |  |  |  |
|   |                       |                          |             |                 |  |  |  |  |  |  |
|   |                       |                          |             |                 |  |  |  |  |  |  |
|   |                       |                          |             |                 |  |  |  |  |  |  |
|   |                       |                          |             |                 |  |  |  |  |  |  |
|   |                       |                          |             |                 |  |  |  |  |  |  |
|   |                       |                          |             |                 |  |  |  |  |  |  |

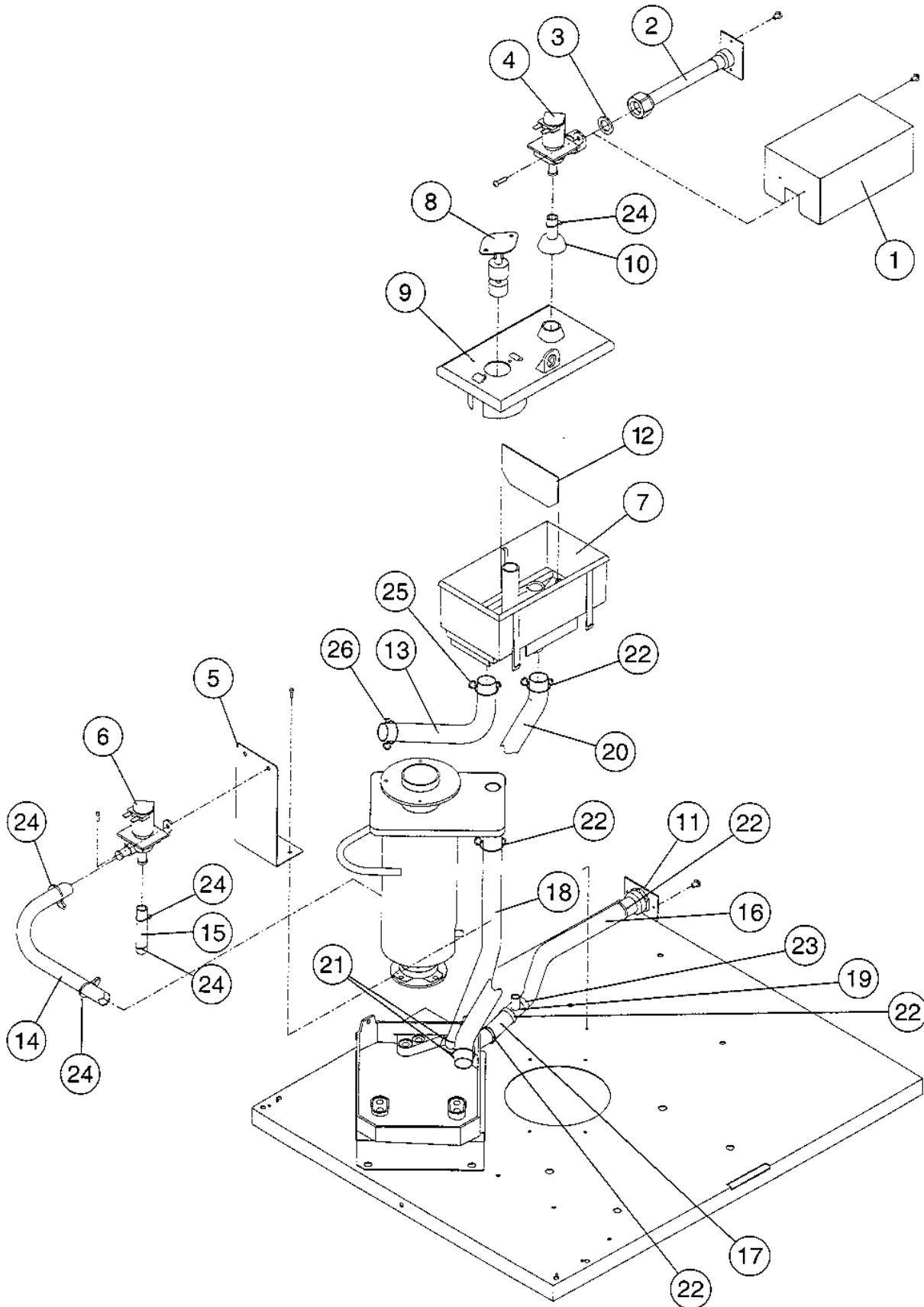


| MODEL: F-450MAH-C TITLE: B. EVAPORATOR ASSEMBLY |                       |                          |             |                 |  |  |  |  |  |  |
|---|-----------------------|--------------------------|-------------|-----------------|--|--|--|--|--|--|
| INDEX NO.                                       | DESCRIPTION           | MATERIAL OR MODEL NUMBER | PART NUMBER | REQUIRED NUMBER |  |  |  |  |  |  |
|   |                       |                          |             | L-0             |  |  |  |  |  |  |
| 1   | GEAR MOTOR            | V06695AIAA               | 4A2193-01   | 1               |  |  |  |  |  |  |
| 2   | BARRIER - GEAR MOTOR  | GS                       | 3A1037-01   | 1               |  |  |  |  |  |  |
| 2a  | FT SCREW              | SS, 4 x 8                | 7F32-0408   | 2               |  |  |  |  |  |  |
| 3   | COUPLING – SPLINE     | SS                       | 418316-01   | 1               |  |  |  |  |  |  |
| 4   | HOUSING               | BRASS                    | 206013G03   | 1               |  |  |  |  |  |  |
| 4a  | BOLT                  | 6 X 20                   | 458660-01   | 4               |  |  |  |  |  |  |
| 5   | “O” RING              | G40                      | 7616-G040   | 1               |  |  |  |  |  |  |
| 6   | MECHANICAL SEAL       | HK9A-MS                  | 432491-01   | 1               |  |  |  |  |  |  |
| 7   | RING (B)              | NTKU-4                   | 432494-01   | 1               |  |  |  |  |  |  |
| 8   | AUGER                 | SS                       | 341448G01   | 1               |  |  |  |  |  |  |
| 9   | EVAPORATOR            | -                        | 2A1699G01   | 1               |  |  |  |  |  |  |
| 9a  | SOCKET HEAD CAP SCREW | SS, 6 x 10               | 7S12-0610   | 4               |  |  |  |  |  |  |
| 9b  | SPLIT LOCK WASHER     | SS, 6                    | 7L22-0800   | 4               |  |  |  |  |  |  |
| 10  | EXTRUDING HEAD – 45N  | SS                       | 327141G01   | 1               |  |  |  |  |  |  |
| 11  | SOCKET HEAD CAP SCREW | SS, 8 x 14               | 429121-01   | 3               |  |  |  |  |  |  |
| 12  | WASHER                | SS                       | 453791-01   | 3               |  |  |  |  |  |  |
| 13  | CUTTER                | SS                       | 440905-01   | 1               |  |  |  |  |  |  |
| 14  | REDUCER               | COPPER                   | 420915-06   | 1               |  |  |  |  |  |  |
|   |                       |                          |             |                 |  |  |  |  |  |  |
|   |                       |                          |             |                 |  |  |  |  |  |  |
|   |                       |                          |             |                 |  |  |  |  |  |  |
|   |                       |                          |             |                 |  |  |  |  |  |  |
|   |                       |                          |             |                 |  |  |  |  |  |  |
|   |                       |                          |             |                 |  |  |  |  |  |  |
|   |                       |                          |             |                 |  |  |  |  |  |  |



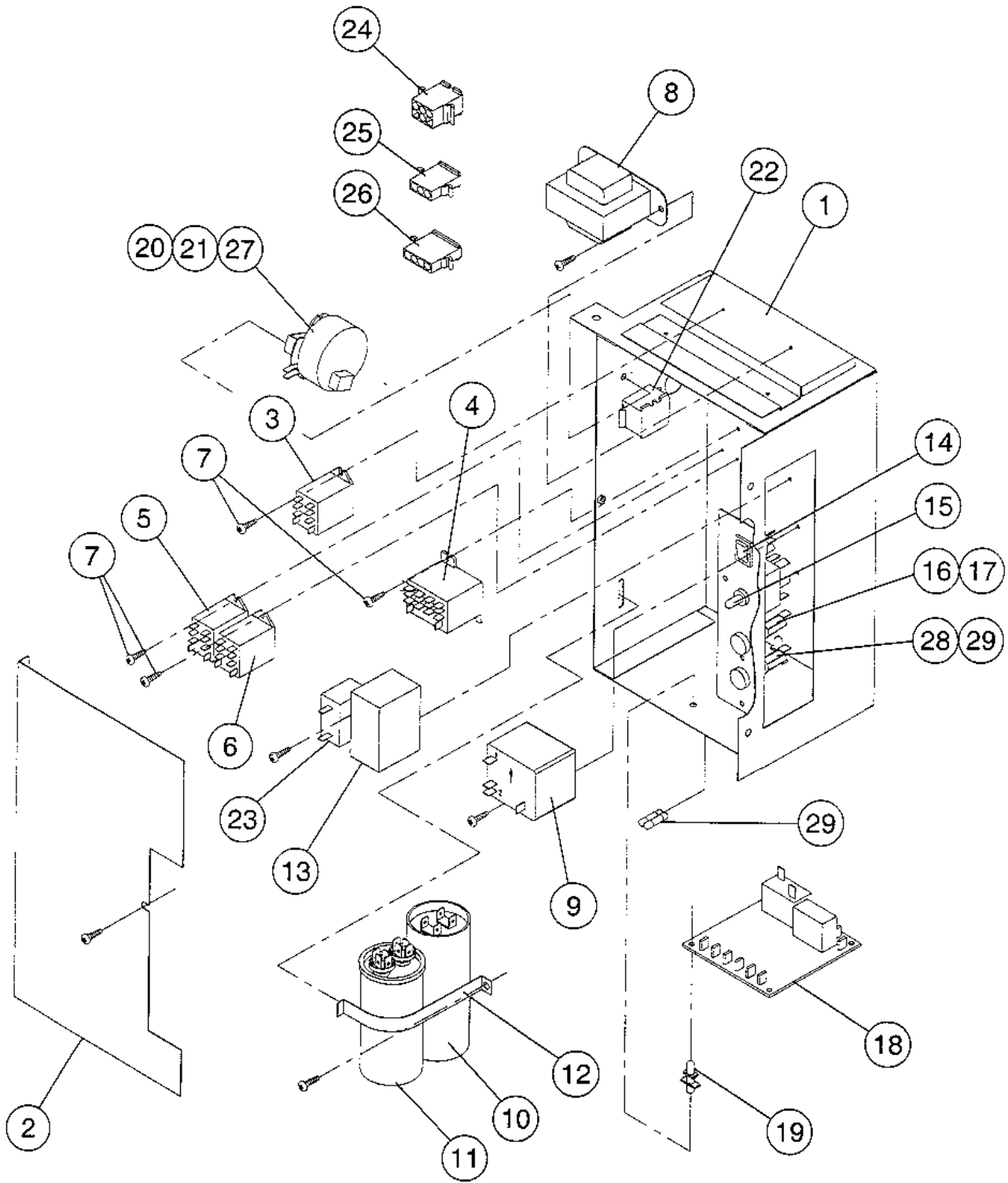
| MODEL: F-450MAH/-C TITLE: C. REFRIGERATION UNIT |                             |                          |             |                 |  |  |  |  |  |  |  |
|---|-----------------------------|--------------------------|-------------|-----------------|--|--|--|--|--|--|--|
| INDEX NO.                                       | DESCRIPTION                 | MATERIAL OR MODEL NUMBER | PART NUMBER | REQUIRED NUMBER |  |  |  |  |  |  |  |
|   |                             |                          |             | L-0             |  |  |  |  |  |  |  |
| 1   | COMPRESSOR                  | RS43C2E-CAA              | 4A2300-01   | 1               |  |  |  |  |  |  |  |
| 2   | GROMMET                     | 027-0073-00              | 434403-01   | 4               |  |  |  |  |  |  |  |
| 3   | SPACER                      | 027-0072-02              | 434404-01   | 4               |  |  |  |  |  |  |  |
| 4   | PROTECTOR                   | 071-0527-04              | 4A1805-01   | 1               |  |  |  |  |  |  |  |
| 5   | PROTECTOR HOLDER            | -                        | 437339-01   | 1               |  |  |  |  |  |  |  |
| 6   | BOLT                        | 8 x 45                   | 437889-01   | 4               |  |  |  |  |  |  |  |
| 7   | CONDENSER                   | 602380                   | 2A0923-01   | 1               |  |  |  |  |  |  |  |
|   | FT SCREW                    | SS, 4 x 8                | 7F32-0408   | 3               |  |  |  |  |  |  |  |
| 8   | SHROUD                      | GS                       | 2A0908-01   | 1               |  |  |  |  |  |  |  |
|   | T2 SCREW                    | 4 x 8                    | 7P31-0408   | 6               |  |  |  |  |  |  |  |
| 9   | FAN MOTOR BRACKET           | GS                       | 3A0828-01   | 1               |  |  |  |  |  |  |  |
|   | HEX HEAD BOLT W/WASHER      | SS, 5 x 12               | 7B0230512   | 4               |  |  |  |  |  |  |  |
| 10  | FAN MOTOR                   | U90 B1 7191-1031         | 440911-01   | 1               |  |  |  |  |  |  |  |
|   | SELF-LOCKING NUT            | No. 8-32                 | 7N21I0832   | 4               |  |  |  |  |  |  |  |
| 11  | FAN BLADE                   | AD10CW32                 | 444898-01   | 1               |  |  |  |  |  |  |  |
| 12  | DRIER                       | A-TCL-032S               | 4A1113-01   | 1               |  |  |  |  |  |  |  |
| 13  | DRIER BRACKET               | GS                       | 445847-01   | 1               |  |  |  |  |  |  |  |
|   | FT SCREW                    | SS, 4 x 8                | 7F32-0408   | 1               |  |  |  |  |  |  |  |
| 14  | COPPER TUBE (A) – HIGH SIDE | COPPER                   | 2A0927G01   | 1               |  |  |  |  |  |  |  |
| 15  | COPPER TUBE (B) – HIGH SIDE | COPPER                   | 4A1289-01   | 1               |  |  |  |  |  |  |  |
| 16  | COPPER TUBE (C) – HIGH SIDE | COPPER                   | 3A0847-01   | 1               |  |  |  |  |  |  |  |
| 17  | EXPANSION VALVE             | AN15C                    | 4A1117-01   | 1               |  |  |  |  |  |  |  |
| 18  | EXPANSION VALVE COVER       | PE FOAM                  | 4A1168-01   | 1               |  |  |  |  |  |  |  |
| 19  | COPPER TUBE (B) – LOW SIDE  | COPPER                   | 3A0844G01   | 1               |  |  |  |  |  |  |  |
| 20  | ACCESS VALVE                | COPPER                   | 457729-01   | 2               |  |  |  |  |  |  |  |





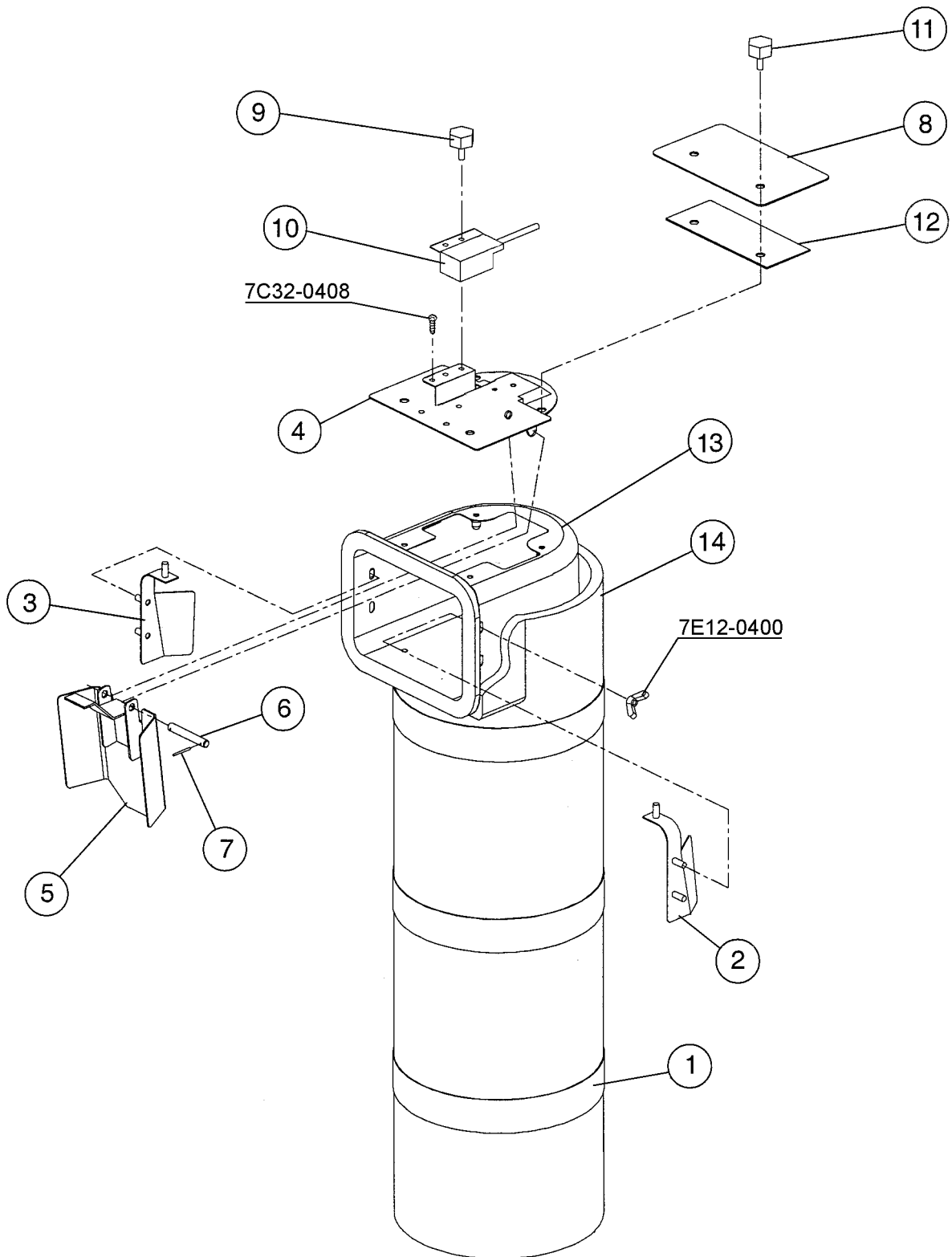


| MODEL: F-450MAH/-C TITLE: D. WATER CIRCUIT |                       |                          |             |                 |  |  |  |  |  |  |
|--|-----------------------|--------------------------|-------------|-----------------|--|--|--|--|--|--|
| INDEX NO.                                  | DESCRIPTION           | MATERIAL OR MODEL NUMBER | PART NUMBER | REQUIRED NUMBER |  |  |  |  |  |  |
|  |                       |                          |             | L-0             |  |  |  |  |  |  |
| 1  | WATER VALVE BRACKET   | GS                       | 3A0553-01   | 1               |  |  |  |  |  |  |
|  | T2 SCREW              | 4 x 8                    | 7P31-0408   | 3               |  |  |  |  |  |  |
| 2  | WATER SUPPLY PIPE     | COPPER                   | 4A0891G01   | 1               |  |  |  |  |  |  |
|  | T2 SCREW              | 4 x 8                    | 7P31-0408   | 4               |  |  |  |  |  |  |
| 3  | WASHER                | K-59963                  | 4A0867-01   | 1               |  |  |  |  |  |  |
| 4  | WATER VALVE           | S-30                     | 4A0865-01   | 1               |  |  |  |  |  |  |
| 5  | DRAIN VALVE BRACKET   | GS                       | 4A1264-01   | 1               |  |  |  |  |  |  |
|  | FT SCREW              | SS, 4 x 8                | 7F32-0408   | 2               |  |  |  |  |  |  |
| 6  | WATER VALVE           | S-60N                    | 4A2077-01   | 1               |  |  |  |  |  |  |
|  | T2 SCREW              | SS, 4 x 8                | 7P32-0408   | 4               |  |  |  |  |  |  |
| 7  | RESERVOIR             | PP                       | 2A0753-01   | 1               |  |  |  |  |  |  |
| 8  | FLOAT SWITCH          | TW-1221-101              | 435490-01   | 1               |  |  |  |  |  |  |
| 9  | RESERVOIR COVER       | PP                       | 214810-01   | 1               |  |  |  |  |  |  |
| 10   | INLET-RESERVOIR       | SI.R.                    | 4A0869-01   | 1               |  |  |  |  |  |  |
| 11   | FITTING               | COPPER                   | 4A0776G01   | 1               |  |  |  |  |  |  |
| 12   | SEPARATOR – RESERVOIR | ABS                      | 4A1255-01   | 1               |  |  |  |  |  |  |
| 13   | RESERVOIR HOSE        | EPDM                     | 4A1165-05   | 1               |  |  |  |  |  |  |
| 14   | SILICONE HOSE         | L=230                    | 7730I3896   | 1               |  |  |  |  |  |  |
| 15   | VINYL HOSE            | L=65                     | 7716-0913   | 1               |  |  |  |  |  |  |
| 16   | VINYL HOSE            | L=270                    | 7716-2025   | 1               |  |  |  |  |  |  |
| 17   | VINYL HOSE            | L=80                     | 7716-2025   | 1               |  |  |  |  |  |  |
| 18   | VINYL HOSE            | L=355                    | 7725-1923   | 1               |  |  |  |  |  |  |
| 19   | TEE                   | PVC                      | 4A1331-01   | 1               |  |  |  |  |  |  |
| 20   | SILICONE HOSE         | L=340                    | 7730-1822   | 1               |  |  |  |  |  |  |
| 21   | CABLE TIE             | CV-150                   | 7920-0003   | 2               |  |  |  |  |  |  |
| 22   | HOSE CLAMP            | 2338 HC 953              | 4A2017-01   | 5               |  |  |  |  |  |  |
| 23   | HOSE CLAMP            | 2342 HC 1031             | 4A2017-02   | 1               |  |  |  |  |  |  |
| 24   | HOSE CLAMP            | 2318 HC 513              | 4A2017-08   | 5               |  |  |  |  |  |  |
| 25   | HOSE CLAMP            | 2326 HC 672              | 4A2017-05   | 1               |  |  |  |  |  |  |
| 26   | HOSE CLAMP            | 2330 HC 750              | 4A2017-06   | 1               |  |  |  |  |  |  |
|  |                       |                          |             |                 |  |  |  |  |  |  |

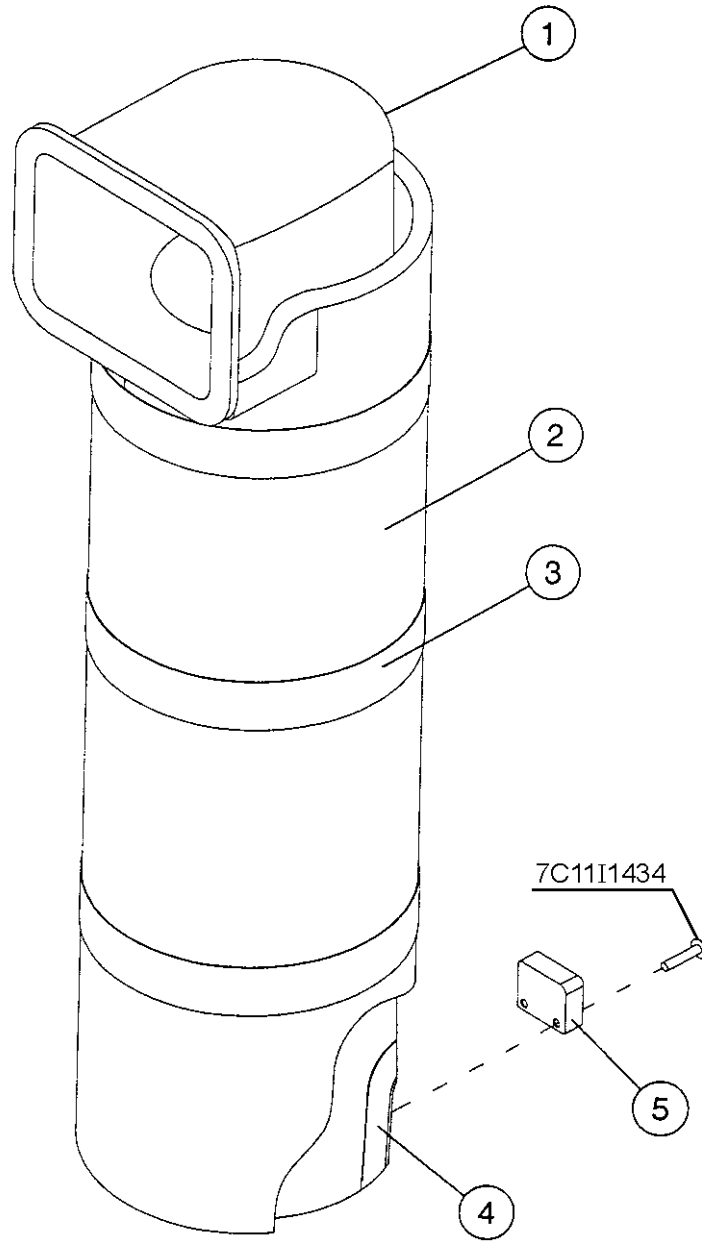


| MODEL: F-450MAH-C TITLE: E. CONTROL BOX ASSEMBLY |                      |                          |             |                 |  |  |  |  |  |  |
|--|----------------------|--------------------------|-------------|-----------------|--|--|--|--|--|--|
| INDEX NO.  | DESCRIPTION          | MATERIAL OR MODEL NUMBER | PART NUMBER | REQUIRED NUMBER |  |  |  |  |  |  |
|  |                      |                          |             | L-0             |  |  |  |  |  |  |
| 1  | CONTROL BOX          | GS                       | 2A0229G04   | 1               |  |  |  |  |  |  |
|  | FT SCREW             | SS, 4 x 8                | 7F32-0408   | 3               |  |  |  |  |  |  |
| 2  | COVER - CONTROL BOX  | GS                       | 3A0411-01   | 1               |  |  |  |  |  |  |
|  | TRUSS HEAD SCREW     | SS, 4 x 8                | 7C32-0408   | 2               |  |  |  |  |  |  |
| 3  | RELAY                | LY2F AC24V               | 406132-03   | 1               |  |  |  |  |  |  |
| 4  | RELAY                | LY4F AC24V               | 406133-04   | 1               |  |  |  |  |  |  |
| 5  | RELAY                | LY1F AC220/240V          | 418271-05   | 1               |  |  |  |  |  |  |
| 6  | RELAY                | LY1F AC120V              | 418271-03   | 1               |  |  |  |  |  |  |
| 7  | TAPPING SCREW        | 3 x 8                    | 431415-01   | 8               |  |  |  |  |  |  |
| 8  | TRANSFORMER          | BE141625GEK              | 4A0557-01   | 1               |  |  |  |  |  |  |
|  | T2 SCREW             | 4 x 8                    | 7P31-0408   | 2               |  |  |  |  |  |  |
| 9  | STARTER              | 3ARR3CT5M5               | 4A1107-01   | 1               |  |  |  |  |  |  |
|  | T2 SCREW             | 4 x 8                    | 7P31-0408   | 1               |  |  |  |  |  |  |
| 10   | CAPACITOR - STARTING | 3535 B7 C0243<br>A115A4  | 3A0076-10   | 1               |  |  |  |  |  |  |
| 11   | CAPACITOR            | X386S (HG01)             | 439943-04   | 1               |  |  |  |  |  |  |
| 12   | STRAP                | GS                       | 434580-10   | 1               |  |  |  |  |  |  |
|  | T2 SCREW             | 4 x 8                    | 7P31-0408   | 1               |  |  |  |  |  |  |
| 13   | CAPACITOR            | UP33B126 UWF             | 4A0894-01   | 1               |  |  |  |  |  |  |
|  | T2 SCREW             | 4 x 8                    | 7P31-0408   | 1               |  |  |  |  |  |  |
| 14   | ROCKER SWITCH        | 62111929-0-0-N           | 4A0558-01   | 1               |  |  |  |  |  |  |
| 15   | TOGGLE SWITCH        | 7599K1                   | 4A2332-01   | 1               |  |  |  |  |  |  |
| 16   | FUSE HOLDER          | HTB921                   | 4A0892-01   | 1               |  |  |  |  |  |  |
| 17   | FUSE                 | AGC-1 1A<br>250V         | 4A0893-01   | 1               |  |  |  |  |  |  |
| 18   | TIMER BOARD          | H2AA144C01               | 437305-01   | 1               |  |  |  |  |  |  |
| 19   | BOARD SUPPORT        | CBL5 37 - M              | 4A0336-03   | 4               |  |  |  |  |  |  |
| 20   | TIMER                | -                        | 4A0889-01   | 1               |  |  |  |  |  |  |
| 21   | SCREW                | 32 x 3/8                 | 4A0898-01   | 1               |  |  |  |  |  |  |



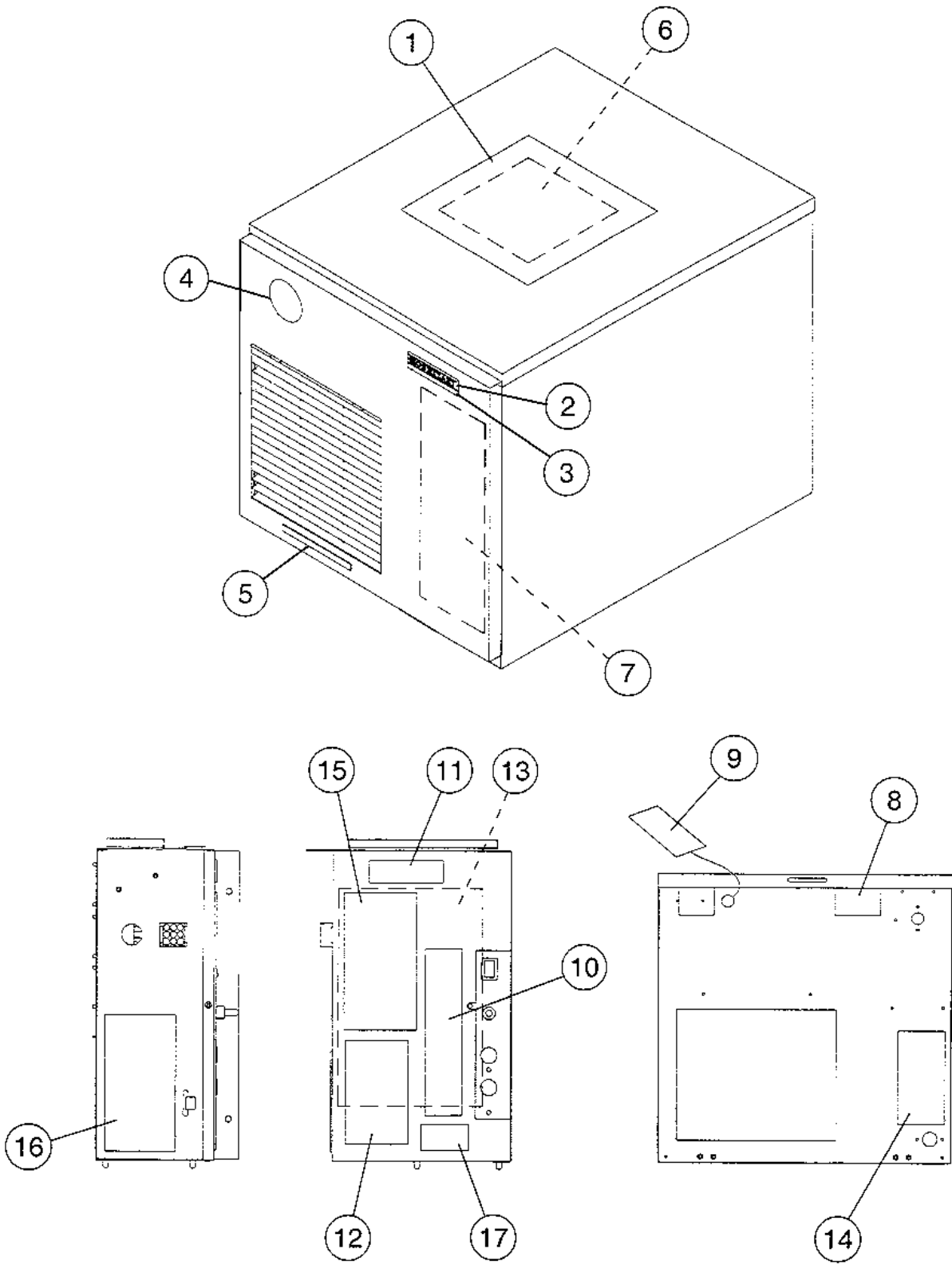












| MODEL: F-450MAH TITLE: G. LABEL LOCATION |   |                          |             |                 |  |  |  |  |  |  |  |
|--|---|--------------------------|-------------|-----------------|--|--|--|--|--|--|--|
| INDEX NO.                                | DESCRIPTION                             | MATERIAL OR MODEL NUMBER | PART NUMBER | REQUIRED NUMBER |  |  |  |  |  |  |  |
|  |   |                          |             | L-0             |  |  |  |  |  |  |  |
| 1  | INSTRUCTION SHEET                       | PAPER                    | 2A1054-01   | 1               |  |  |  |  |  |  |  |
| 2  | EMBLEM                                  | PETP FILM                | 4A0560-01   | 1               |  |  |  |  |  |  |  |
| 3  | MODEL NUMBER LABEL                      | PETP FILM                | 4A2233-10   | 1               |  |  |  |  |  |  |  |
| 4  | LABEL - PENGUIN - HA - L                | PETP FILM                | 456246-01   | 1               |  |  |  |  |  |  |  |
| 5  | LABEL - AIR FILTER                      | PETP FILM                | 426177-01   | 1               |  |  |  |  |  |  |  |
| 6  | INSTRUCTION LABEL                       | PVC FILM                 | 326371-01   | 1               |  |  |  |  |  |  |  |
| 7  | LABEL - CLEANING                        | PVC FILM                 | 326370-01   | 1               |  |  |  |  |  |  |  |
| 8  | NAMEPLATE                               | PES FILM                 | 3A1833-01   | 1               |  |  |  |  |  |  |  |
| 9  | TAG - WARNING:<br>ELECTRICAL CONNECTION | PAPER                    | 435005-01   | 1               |  |  |  |  |  |  |  |
| 10                                       | CONTROL LABEL                           | PVC FILM                 | 4A1613-01   | 1               |  |  |  |  |  |  |  |
| 11                                       | LABEL - R404A                           | PES FILM                 | 4A0960-01   | 1               |  |  |  |  |  |  |  |
| 12                                       | CAUTION LABEL (E)                       | PVC FILM                 | 439145-01   | 1               |  |  |  |  |  |  |  |
| 13                                       | WIRING LABEL                            | PVC FILM                 | 2A1830-01   | 1               |  |  |  |  |  |  |  |
| 14                                       | INSTRUCTION SHEET                       | PAPER                    | 433523-01   | 1               |  |  |  |  |  |  |  |
| 15                                       | CAUTION LABEL (H)                       | PVC FILM                 | 439148-01   | 1               |  |  |  |  |  |  |  |
| 16                                       | RATING LABEL                            | PES FILM                 | 3A1834-01   | 1               |  |  |  |  |  |  |  |
| 17                                       | LABEL (GM) – FUSE                       | PVC FILM                 | 4A1614-01   | 1               |  |  |  |  |  |  |  |
|  |   |                          |             |                 |  |  |  |  |  |  |  |
|  |   |                          |             |                 |  |  |  |  |  |  |  |
|  |   |                          |             |                 |  |  |  |  |  |  |  |
|  |   |                          |             |                 |  |  |  |  |  |  |  |
|  |   |                          |             |                 |  |  |  |  |  |  |  |
|  |   |                          |             |                 |  |  |  |  |  |  |  |
|  |   |                          |             |                 |  |  |  |  |  |  |  |
|  |   |                          |             |                 |  |  |  |  |  |  |  |
|  |   |                          |             |                 |  |  |  |  |  |  |  |
|  |   |                          |             |                 |  |  |  |  |  |  |  |
|  |   |                          |             |                 |  |  |  |  |  |  |  |
|  |   |                          |             |                 |  |  |  |  |  |  |  |

| MODEL: F-450MAH-C TITLE: G. LABEL LOCATION |   |                          |             |                 |  |  |  |  |  |  |  |
|--|---|--------------------------|-------------|-----------------|--|--|--|--|--|--|--|
| INDEX NO.                                  | DESCRIPTION                             | MATERIAL OR MODEL NUMBER | PART NUMBER | REQUIRED NUMBER |  |  |  |  |  |  |  |
|  |   |                          |             | L-0             |  |  |  |  |  |  |  |
| 1  | INSTRUCTION SHEET                       | PAPER                    | 2A1054-01   | 1               |  |  |  |  |  |  |  |
| 2  | EMBLEM                                  | PETP FILM                | 4A0560-01   | 1               |  |  |  |  |  |  |  |
| 3  | MODEL NUMBER LABEL                      | PETP FILM                | 4A2233-11   | 1               |  |  |  |  |  |  |  |
| 4  | LABEL - PENGUIN - HA - L                | PETP FILM                | 456246-01   | 1               |  |  |  |  |  |  |  |
| 5  | LABEL - AIR FILTER                      | PETP FILM                | 426177-01   | 1               |  |  |  |  |  |  |  |
| 6  | INSTRUCTION LABEL                       | PVC FILM                 | 326371-01   | 1               |  |  |  |  |  |  |  |
| 7  | LABEL - CLEANING                        | PVC FILM                 | 326370-01   | 1               |  |  |  |  |  |  |  |
| 8  | NAMEPLATE                               | PES FILM                 | 3A1833-02   | 1               |  |  |  |  |  |  |  |
| 9  | TAG - WARNING:<br>ELECTRICAL CONNECTION | PAPER                    | 435005-01   | 1               |  |  |  |  |  |  |  |
| 10   | CONTROL LABEL                           | PVC FILM                 | 4A1613-01   | 1               |  |  |  |  |  |  |  |
| 11   | LABEL - R404A                           | PES FILM                 | 4A0960-01   | 1               |  |  |  |  |  |  |  |
| 12   | CAUTION LABEL (E)                       | PVC FILM                 | 439145-01   | 1               |  |  |  |  |  |  |  |
| 13   | WIRING LABEL                            | PVC FILM                 | 2A1830-01   | 1               |  |  |  |  |  |  |  |
| 14   | INSTRUCTION SHEET                       | PAPER                    | 433523-01   | 1               |  |  |  |  |  |  |  |
| 15   | CAUTION LABEL (H)                       | PVC FILM                 | 439148-01   | 1               |  |  |  |  |  |  |  |
| 16   | RATING LABEL                            | PES FILM                 | 3A1834-02   | 1               |  |  |  |  |  |  |  |
| 17   | LABEL (GM) -- FUSE                      | PVC FILM                 | 4A1614-01   | 1               |  |  |  |  |  |  |  |
|  |   |                          |             |                 |  |  |  |  |  |  |  |
|  |   |                          |             |                 |  |  |  |  |  |  |  |
|  |   |                          |             |                 |  |  |  |  |  |  |  |
|  |   |                          |             |                 |  |  |  |  |  |  |  |
|  |   |                          |             |                 |  |  |  |  |  |  |  |
|  |   |                          |             |                 |  |  |  |  |  |  |  |
|  |   |                          |             |                 |  |  |  |  |  |  |  |
|  |   |                          |             |                 |  |  |  |  |  |  |  |
|  |   |                          |             |                 |  |  |  |  |  |  |  |
|  |   |                          |             |                 |  |  |  |  |  |  |  |
|  |   |                          |             |                 |  |  |  |  |  |  |  |
|  |   |                          |             |                 |  |  |  |  |  |  |  |

