

FILTER SYSTEM REPLACEMENT PARTS

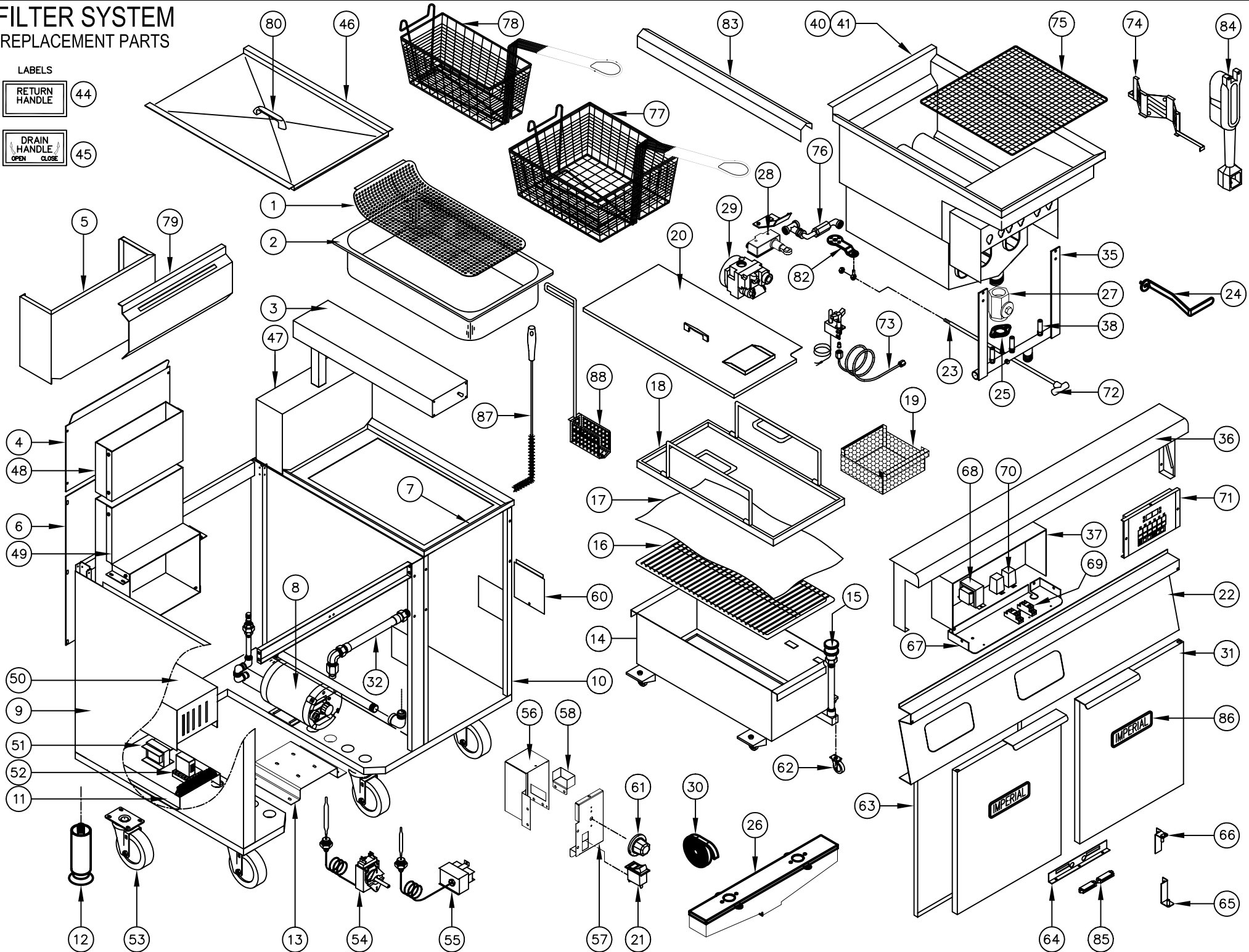
LABELS

RETURN
HANDLE

44

DRAIN
HANDLE
OPEN CLOSE

45



FRYER FILTER SERIES SYSTEM

ITEM NO	DESCRIPTION	PART #	40	50
1	Dump Pan Screen	32753	1	1
2	Dump Pan	2999	1	1
3	Heat Lamp	0397	1	1
	Replacement Bulb	28254	1	1
4	Upper Back Panel	32755	1	1
	31" Upper Back Panel	34039		
5	Vessel Back Panel	37256	1	1
	Filter System 31in Panel Vessel Rear	32758	1	1
	Filter-15 1/2 Panel Vessel Rear	35150	1	1
6	31" Lower Back Panel	32790	1	1
	46-1/2" Lower Back Panel L/H	32791	1	1
	46-1/2" Lower Back Panel R/H	32792	1	1
	62" Lower Back Panel	32793	1	1
7	Top Frame Panel	32757	1	1
8	Motor & Pump Assembly	28255	1	1
	Motor	28256	1	1
	Oil Pump	28257	1	1
9	Side Panel - R/H Access For Space Saver Sys.	32664	1	1
	Side Panel - L/H Access For Space Saver Sys.	32663	1	1
10	Side Panel - R/H For Side Car Filter Sys.	32662	1	1
	Side Panel - L/H For Side Car Filter Sys.	32661	1	1
11	Filter System Transformer Bottom 115v to 24v	32690	1	1
12	S/S Leg 6in. 5/8 Stud Nylon Glide	30555	4	4
13	Filter System Pump Support	32692	1	1
14	Filter System Oil Pan Assy. 40/50	32717	1	1
	Filter System Oil Pan Assy. 75	32845		
15	1/2" Quick Disconnect Female	34828	1	1
	1/2" Quick Disconnect Male	34829	1	1
16	Filter Pan Screen	32696	1	1
17	Filter Paper - Box Of 100 Sheets (23-1/4 x 12-1/2) 40 & 50 lbs	28209	1	1
	Filter Paper - Box Of 100 Sheets (27-1/2 x 16-1/4) 75lbs	28370	1	1
18	Filter Frame Assembly	32711	1	1
19	Filter System Crumb Basket 50/75	32713		
20	Filter Pan Cover	32716	1	1
21	Circuit Breaker Switch	1226	1	1
22	31" Front Panel	32772	1	1
	46 1/2" Front Panel	32773		
	31" Front Panel W/ Comp.	32774		
	46 1/2" Front Panel W/ Comp.	32775		
23	Oil Return Handle Rod	28270	2	2
24	Filter System Drain Handle L/H	32745	1	1
	Filter System Drain Handle R/H	32746	1	1
25	Filter System Gasket Plate Top & Bottom	32719	4	4
26	Filter System 31in Drain Weld Assy.	32728	1	1
	Filter System 46-1/2 Drain Weld Assy.	32733	1	1
	Filter System 62in Drain Weld Assy.	32738	1	1
	Filter System 77-1/2 Drain Weld Assy.	32743	1	1
27	Drain Valve	1623	1	1
28	Micro Switch	1355	1	1
29	Fryer Combo Gas Vavle (Nat Gas)	1173-HW	2	2

FRYER FILTER SERIES SYSTEM

ITEM NO	DESCRIPTION	PART #	40	50
	Fryer Combo Gas Vavle - L.P. (RobertShaw)	1174-RS	2	2
30	Super-Resilient Silicone Foam Rubber Strip	35761	1	1
31	Fltler System Door L/H Assy.	32677	1	1
	Filter System Door R/H Assy.	32678	1	1
	Filter System Door L/H W/Magnet Assy.	32679	1	1
	Filter System Door R/H W/Magnet Assy.	32680	1	1
32	Pump to Pan Hose For IF FS Filter With 1 Elbow	28290	1	1
***	Pump to Pan Hose For IF FS Filter With 2 Elbows	28290-1	1	1
35	3 Tube Fryer Manifold IF-40 W/ Brackets	1365	2	
	4 Tube Fryer / Manifold With Brackets	28324		2
36	31"Landing Ledge	32761	1	1
	46 1/2" Landing Ledge	32762		
	62" Landing Ledge	32763		
	77 1/2" landing Ledge	32764		
37	Filter System - 15 1/2 " Heat Shield Top	35082	1	1
	Filter System - 15 1/2" Heat Shield Bottom	35083	1	1
	Fltler System 31in Heat Shield Top	32751	1	1
	Filter System 31in Heat Shield Bottom	32752	1	1
38	Burner Orifice - NAT.	1625-36	6	8
	Burner Orifice - L.P.	1625-51	6	8
40	Vessel Assembly - S/S 4 Tube	32660		2
41	Vessel Assembly - S/S 3 Tube	28181	2	
43	ICV/Terminal Block	1136	2	2
44	Return Handle Decal	28276	2	2
45	Drain Handle Decal	28275	2	2
46	Vessel Vat Cover With Handle	28329	2	2
47	Filter System Panel Vessel Rear (IF-DS)	32756	1	1
48	Upper Flue Assembly - 3 Tube Fryer	28061	2	
	Upper Flue Assembly - 4 Tube Fryer	28110		2
49	Lower Flue Assembly - 3 Tube Fryer	28064	2	
	Lower Flue Assembly - 4 Tube Fryer	28111		2
50	Motor Control Cover	32691	1	1
51	Transformer For Pump	1377	1	1
52	Relay 24 VA 50/60 Hz For IF-Space Saver	6025	1	1
	Base Mount For Relay For IF-Space Saver	6026	1	1
53	Caster	1060	2	2
	Caster With Brake	1061	2	2
54	Operating Thermostat	1175	2	2
55	Hi Limit Switch	1177	2	2
56	Fltler System Control Box L/H	32681	2	2
	Fltler System Control Box R/H	32682	2	2
57	Fltler System Control Cover L/H	32683	2	2
	Fltler System Control Cover R/H W/Switch	32684	2	2
	Fltler System Control Cover R/H	32685	2	2
	Fltler System Control Cover L/H (Solid State)	32686	2	2
	Fltler System Control Cover R/H (S.S. W/ Switch)	32687	2	2
	Fltler System Control Cover R/H (Solid State)	32688	2	2
58	Fltler System Micro Switch Bracket	32689	2	2
60	Access Panel	32665	1	1
61	Dial For Thermostat/Fryer	1176	2	2

FRYER FILTER SERIES SYSTEM

ITEM NO	DESCRIPTION	PART #	40	50
62	Caster For Filter Pan Carriage	28287	4	4
63	Door Liner For Door	28248	2	2
64	Door Magnet Bracket	28294	2	2
65	Filter System Door Hinge Bottom	32673	2	2
66	Filter System Door Hinge Top	32672	2	2
67	Filter System - 15 1/2 " Heat Shield Top	35082	2	2
	Filter System - 15 1/2" Heat Shield Bottom	35083	2	2
	Filter System 31in Heat Shield Top	32751	2	2
	Filter System 31in Heat Shield Bottom	32752	2	2
68	Transformer For Computer Control Fryer	3029-1	2	2
69	Relay Mounting Bracket	1089	2	2
70	Relay For Computer Control Fryer	1077	4	4
71	Computer Control	1178	2	2
***	Digital Controller for fryer	0356		
72	Oil Return Handle For Filter System	28319	2	2
73	Aluminized Tubing 1/4"	2105-**	21or 24in.	21or 24in.
74	Diffuser Assembly	0308	6	8
75	Fryer Crumb Screen/Fine Mesh 13 1/2 X 13 1/2	2038	2	2
76	Filter System Return Valve	28281	2	2
77	Full Size Frying Basket 40/50 (L 13"xW 12-1/4"xD 5-1/2")	2036	2	2
78	Twin Size Frying Basket 40/50 (L 12-3/4"xW 6-1/2"xD 5 1/4")	2035	4	4
79	Basket Hanger 31"	32759	1	1
80	Vessel Vat Cover Handle	1090	2	2
82	Filter System Return Valve Crank (Specify Right or Left Hand)	32724	1	2
83	Filter System Joiner Strip L/H And R/H	32776	1	1
	Filter System Joiner Strip (IFS 50/IF-SD)	32777	1	1
84	Burner	1225	6	8
85	Door Magnet For Fryer	1830	2	2
86	Large Imperial Blue Logo Plate	35840	2	2
	Push Nut	36569	4	4
87	"L" Shaped Cleaning Brush For Fryer	31555	1	1
88	Sediment Scooper	1391	1	1

Please Note the following conversions are Valve only kits.

	Honeywell Valve Conversion Kit From LP To Nat Gas	37242	1	1
	Honeywell Valve Conversion Kit From Nat To LP Gas	37242-1	1	1
	Robertshaw Valve Conversion Kit From Nat To LP Gas	28089	1	1
	W.Rodgers Valve Conversion Kit From Nat To LP Gas	28089-1	1	1
	Robertshaw Valve Conversion Kit From LP To Nat Gas	28088	1	1
	W.Rodgers Valve Conversion Kit From LP To Nat Gas	28088-1	1	1