

ISE

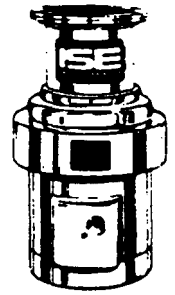
IN-SINK-ERATOR

COMMERCIAL DISPOSER

MODEL
SS-300
SS-300-1

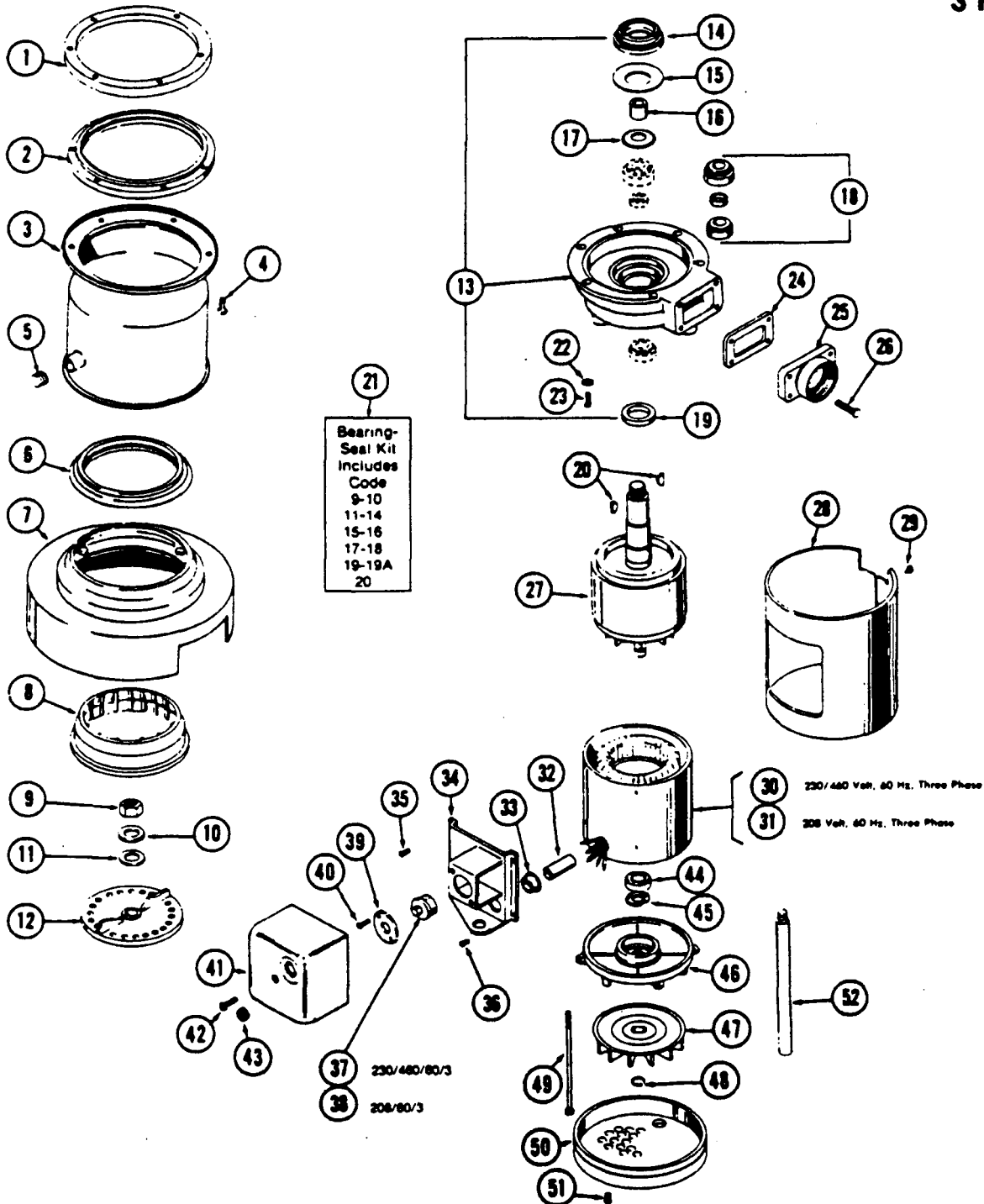
230/460/60/3
208/60/3

ENGINEER
NUMBER
13008
13008B



3 H.P.

September, 1979



ORDER BY PART NUMBER, NOT CODE NUMBER
(All Parts F O.B. Agency/Depot) (Include Serial and Model Number of Disposer when ordering)

MODEL
SS-300
SS-300-1

230/460/60/3
208/60/3

ENGINEER
NUMBER
13008
13008B

Code No.	Part No.	No. Req.	Description	Code No.	Part No.	No. Req.	Description
1	11004	1	Mounting Flange	28	11721	1	Shell - Trim
2	11016	1	Gasket, Mounting	29	1836-A	2	Screw
3	11232	1	Body, Container	30	N/A	1	Stator Assembly 230/460 Volt, 60 Hz, Three Phase
4	1491	6	Bolt, Mounting	31	N/A	1	Stator Assembly 208 Volt, 60 Hz, Three Phase
5	11227	1	Pipe Plug	32	12357	1	Tubing Insulation
6	11008	1	Seal, Body - Shredder	33	12384	1	Bushing
7	11735	1	Body and Cover Assembly	34	12433-A	1	Terminal Box Mounting Bracket
8	11250	1	Stationary Shredder	35	11448	4	Strew
9	11255	1	Nut, Shredder	36	13564	1	Ground Screw
10	11356	1	Washer	37	13422-AW	1	Overload Protector 230/460 Volt, 60 Hz, Three Phase
11	13143	1	Washer, Fibre	38	13422-A	1	Overload Protector 208 Volt, 60 Hz, Three Phase
12	11317	1	Rotor Shredder	39	12378	1	Clamp, Overload
13	11728	1	End Bell, Upper Includes Codes 14, 15, 17, 18,19)	40	5765	2	Screw
14	11443	1	Face Seal	41	12373	1	Terminal Box
15	11734	1	Support Washer	42	13313	1	Grommet
16	11723	1	Spacer Sleeve	43	12381	1	Screw
17	11739	1	Centrifugal Moisture Shield	44	13415	1	Bearing - lower
18	12638	1	Bearing Assembly, Upper	45	13399	1	Spring. Pre-load
19	11131	1	Support Washer	46	11745	1	End Frame, Lower
19A	11769	1	Oil and Water Retainer	47	12395	1	Fan
20	11330	2	Woodruff Key	48	12635	1	Retaining Ring
21	12637		Bearing - Seal Kit Includes Codes 9-10-11-14,15-16-17-18-19-20	49	1476	4	Bolt, Thru
22	11444	6	Washer	50	11748	1	Cover. Bottom
23	11534	6	Bolt	51	7817	3	Screw
24	11457	1	Gasket, Outlet	52	11757-A	3	Leg Assembly
25	11456	1	Outlet Flange				
26	3130	4	Bolt - Outlet Flange				
27	11737	1	Rotor and Shaft Assembly				



11005
SPLASH BAFFLE



11249
SLEEVE GUARD



4173
JAM RELEASE BAR

ORDER BY PART NUMBER, NOT CODE NUMBER

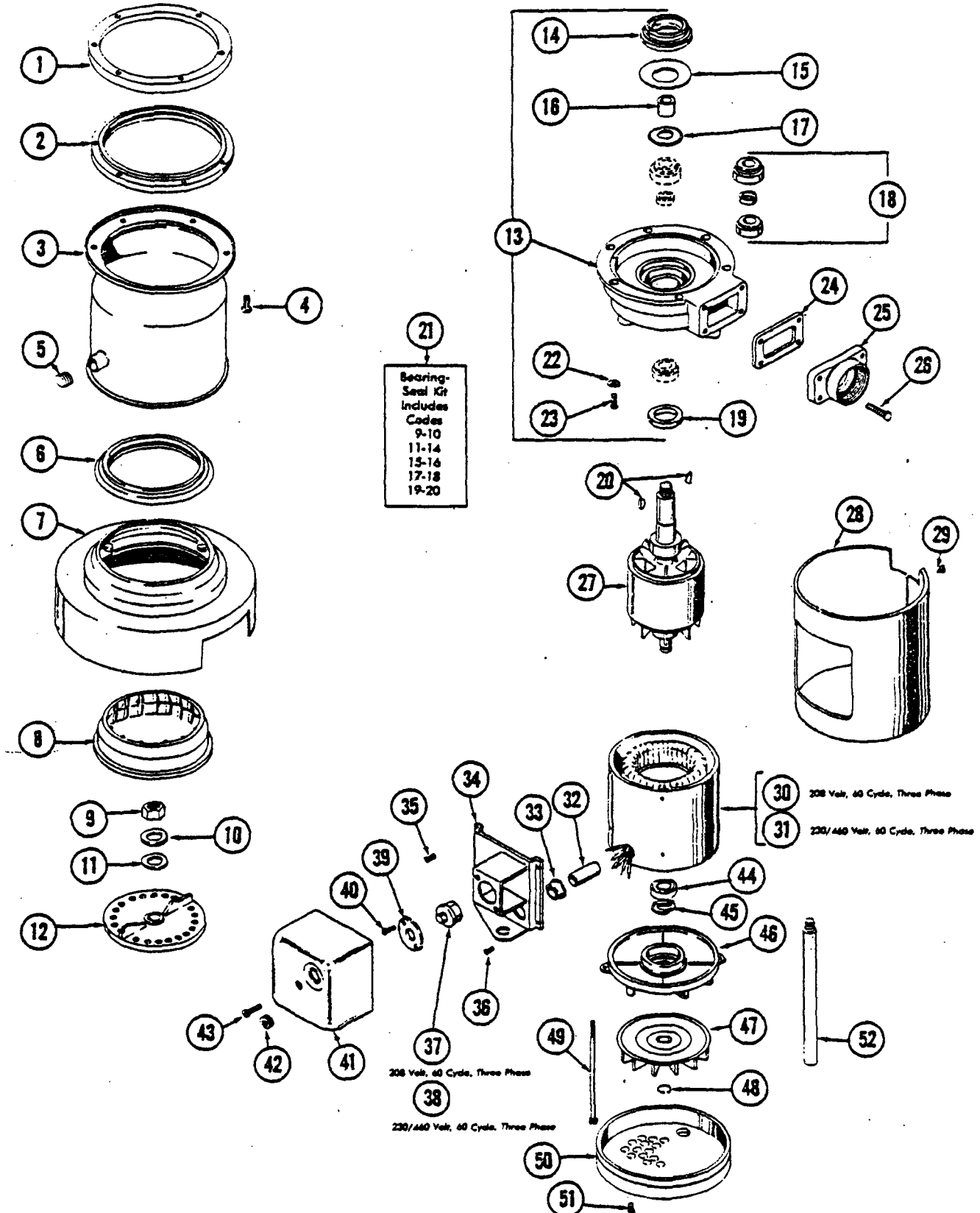
(All Parts FOB Agency/Depot) (Include Serial end Model Number of Disposer when ordering)



IN-SINK-ERATOR DIVISION
EMERSON ELECTRIC CO.
4700-21 ST STREET
RACINE, WISCONSIN 53406
PHONE: (414) 554-5432

PARTS LIST FOR COMMERCIAL DISPOSERS
 MODEL SS-300 **IN-SINK-ERATOR®** 3 H.P.

(Includes Model SS-300-1)



ORDER BY PART NUMBER, NOT CODE NUMBER
 (Minimum Parts Order \$3.00)

(All PARTS F.O.B. FACTORY/DEPOT) (INCLUDES SERIAL AND MODEL NUMBER OF DISPOSER WHEN ORDERING)

EFFECTIVE March, 1972

PARTS LIST FOR COMMERCIAL DISPOSERS

MODEL SS-300 **IN-SINK-ERATOR®** 3 H.P.

(Includes Model SS-300-1)

Code No.	Part No.	No. Reqd	Description	Code No.	Part No.	No. Reqd.	Description
1	11004	1	Mounting Flange	30	12460	1	Stator Assembly 208 Volt, 60 Cycle, Three Phase
2	11016	1	Gasket, Mounting	31	11733	1	Stator Assembly 230/460 Volt, 60 Cycle, Three Phase
3	11332	1	Body. Container	32	12357	1	Tubing Insulation
4	1491	6	Bolt, Mounting	33	12384	1	Bushing
5	11227	1	Pipe Plug	34	12433-A	1	Terminal Box Mounting Bracket
6	11008	1	Seal, Body - Shredder	35	11448	4	Screw
7	11725	1	Body and Cover Assembly	36	12564	1	Ground Screw
8	11250	1	Stationary Shredder	37	11749	1	Overload Protector 208 Volt, 60 Cycle, Three Phase
9	11255	1	Nut, Shredder	38	12619	1	Overload Protector (Use above serial #43274 only) 230/460 Volt. 60 Cycle Three Phase
10	11256	1	Washer	38	11749	1	Overload Protector (Use below serial #43274 only) 230/460 Volt, 60 Cycle Three Phase
11	12143	1	Washer Fibre	39	12378	1	Clamp, Overload
12	11317	1	Rotor Shredder	40	5765	2	Screw
13	11728	1	Upper End Belt Includes Codes 14-13-17-18-19	41	12372	1	Terminal Box
14	11463	1	Face Seal	42	12383		Grommet
15	11724	1	Support Washer	43	12381		Screw
16	11723	1	Spacer Sleeve	44	12413		Bearing - Lower
17	11729	1	Centrifugal Moisture Shield	45	12399		Spring, Pre-load
18	12636	1	Bearing Assembly Upper	46	11745		End Frame, Lower
19	11732	1	Oil and Water Retainer	47	1239S		Fan
20	11320	2	Woodruff Key	48	12633		Retaining Ring
21	12637		Bearing - Seal Kit Includes Codes 9-10-11-14-13-16-17-18-19-20	49	1476	4	Bolt, Thru
22	11444	6	Washer	50	11748	1	Cover, Bottom
23	11524	6	Bolt	51	7887	3	Screw
24	11457	1	Gasket Outlet	52	11757-A	3	Leg Assembly
2S	11456	1	Outlet Flange				
26	3130	4	Bolt - Outlet Flange				
27	11737	1	Rotor and Shaft Assembly				
28	11721	1	Shell - Trim				
29	1836-A	2	Screw				

ORDER BY PART NUMBER. NOT CODE NUMBER

(Minimum Parts Order \$3.00)

(ALL PARTS F.O.B. FACTORY/DEPOT) (INCLUDE SERIAL AND MODEL NUMBER OF DISPOSER WHEN ORDERING)



IN-SINK-ERATOR DIVISION
EMERSON ELECTRIC CO.
4700-21ST STREET RACINE,
WISCONSIN 53406 PHONE
(414) 637-6761

ISE

IN-SINK-ERATOR

COMMERCIAL DISPOSER

MODEL
SS-300-8
SS-300-9

230/460/60/3
208/60/3

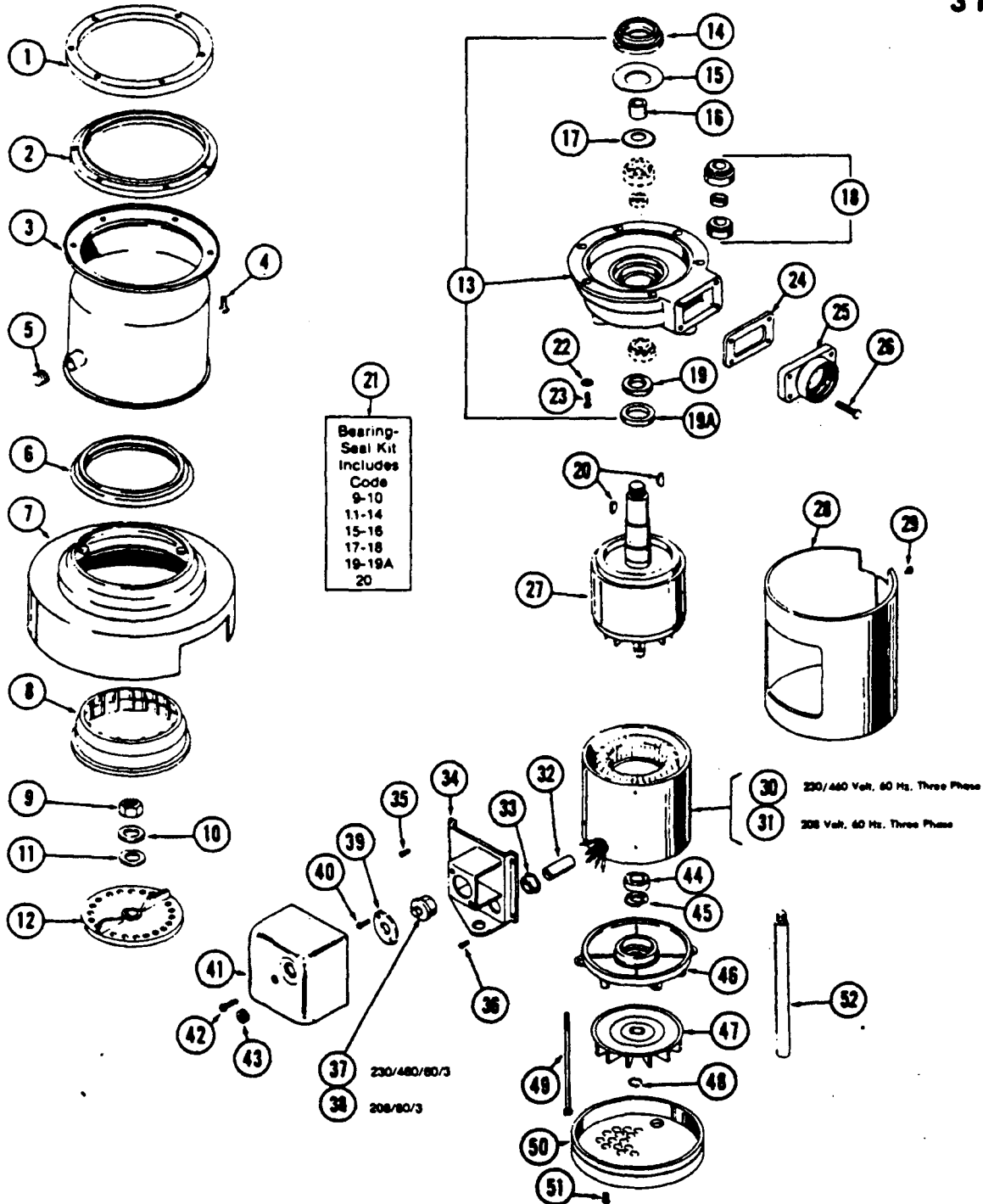
CANADIAN
MODEL
SS-300-11
SS-300-12

Start with Serial #70,000



3 H.P.

September, 1979



ORDER BY PART NUMBER, NOT CODE NUMBER

(All Parts FOB Agency/Depot (Include Serial and Model Number of Disposer when ordering))

	MODEL	CANADIAN
	MODEL	MODEL
	SS-300-8 230/460/60/3	SS-300-11
	SS-300-9 208/60/3	SS-300-12

Code No	Part No	No. Req.	Description	Code No	Part No.	No. Req	Description
1	11004	1	Mounting Flange	28	11731	1	Shell - Trim
2	11016	1	Gasket, Mounting	29	1836-A	2	Screw
3	11232	1	Body, Container	30	13079	1	Stator Assembly 230/460 Volt. 60 Hz. Three Phase
4	1491	6	Bolt, Mounting	31	13078	1	Stator Assembly 208 Volt. 60 Hz, Three Phase
5	11227	1	Pipe Plug	32	12357		Tubing Insulation
6	11008	1	Seal, Body - Shredder	33	12384		Bushing
7	11725	1	Body and Cover Assembly	34	12433-A		Terminal Box Mounting Bracket
8	11350	1	Stationary Shredder	35	11448	4	Screw
9	11255	1	Nut, Shredder	36	12564		Ground Screw
10	11256	1	Washer	37	13107		Overload Protector 230/460 Volt. 60 Hz, Three Phase
11	12143	1	Washer, Fibre	38	11749	1	Overload Protector 208 Volt. 60 Hz. Three Phase
12	11317	1	Rotor Shredder	39	12378	1	Clamp, Overload
13	11766	1	End Bell. Upper Includes Codes 14, 15, 17, 18, 19. 19A	40	5765	2	Screw
14	11443	1	Face Seal	41	12372	1	Terminal Box
15	11724	1	Support Washer	42	12383	1	Grommet
16	11723	1	Spacer Sleeve	43	13381	1	Screw
17	11729	1	Centrifugal Moisture Shield	44	13415	1	Bearing - Lower
18	12638	1	Bearing Assembly, Upper	45	13399	1	Spring, Pre-load
19	11831	1	Support Washer	46	11672	1	End Frame, Lower
19A	11769	1	Oil and Washer Retainer	47	12395	1	Fan
20	11330	2	Woodruff Key	48	12635	1	Retaining Ring
21	13639		Bearing - Seal Kit Includes Codes 9-10- 11-14-15-16-17-18-19-19A-20	49	8039A	4	Belt, Thru
22	11444	6	Washer	50	11748	1	Cover, Bottom
23	11524	6	Bolt	51	7887	3	Screw
24	11457	1	Gasket. Outlet	52	11757-A	3	Leg Assembly
25	11456	1	Outlet Flange				
26	3130	4	Bolt - Outlet Flange				
27	11791	1	Rotor and Shaft Assembly				



11005
SPLASH BAFFLE



11249
SLEEVE GUARD



4173
JAM RELEASE BAR

ORDER BY PART NUMBER, NOT CODE NUMBER
(All Parts FOB Agency/Depot) (Include Serial and Model Number of Disposer when ordering)



IN-SINK-ERATOR DIVISION
EMERSON ELECTRIC CO.
4700-21 ST STREET
RACINE, WISCONSIN 53406
PHONE: (414) 554-5432

MODEL

SS-300-17 230/460/60/3
SS-300-18 208/60/3

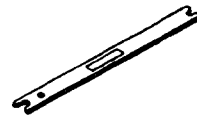
MODEL
CANADIAN
SS-300-19
SS-300-20

Start with Serial #130,000

CODE NO.	PART NO.	NO. REQ.	DESCRIPTION	CODE NO.	PART NO.	NO. REQ.	DESCRIPTION
1	11004	1	Mounting Flange	31	13270	1	Rotor and Shaft Assembly (Includes Code 48)
2	11016	1	Gasket, mounting	32	11721	1	Shell - Trim
3	11232	1	Body, container	33	1836-A	2	Screw
4	1491	6	Bolt, mounting	34	13079	1	Stator Assembly 230/460 Volt, 60 Hz, Three Phase
5	11227	1	Pipe Plug	35	13078	1	Stator Assembly 208 Volt, 60 Hz, Three Phase
6	11008	1	Seal, body - Shredder	36	12357	1	Tubing Insulation
7	11725	1	Body and Cover Assembly	37	12384	1	Bushing
8	11250	1	Stationary Shredder	38	12433-A	1	Terminal Box Mounting Bracket
9	11255	1	Nut, shredder	39	11448	4	Screw
10	11256	1	Washer	40	2466-A	1	Ground Screw
11	12143	1	Washer, fiber	41	13107	1	Overload Protector 230/460 Volt, 60 Hz, Three Phase
12	13273	1	Rotor Shredder	42	11749	1	Overload Protector 208 Volt, 60 Hz, Three Phase
13	13320	1	End Bell, upper (Includes Codes 9, 10, 11, 14 thru 24)	43	12378	1	Clamp, overload
14	13266	1	Shield	44	1836-A	2	Screw
15	1269	6	Screw	45	12372		Terminal Box
16	13260	1	Seal, triple lip	46	12383		Grommet
17	13265	1	Spacer Sleeve	47	12381		Screw
18	12859	1	"O" Ring	48	12415		Bearing, lower
19	11729	1	Centrifugal Moisture Shield	49	12399		Spring, pre-load
20	12638	1	Bearing Assembly, upper	50	11672		End Frame, lower
21	11821	1	Support Washer	51	12395	1	Fan
22	11769	1	Oil and Water Retainer	52	12635	1	Retaining Ring
23	11320	2	Woodruff Key	53	8039	4	Bolt, thru
24	11322	1	Woodruff Key	54	11748	1	Cover, bottom
25	13281	1	Bearing - Seal Kit, (Includes Codes 9, 10, 11, 14 thru 24)	55	7887	3	Screw
26	11444	6	Washer	56	11757-A	3	Leg Assembly
27	11524	6	Bolt				
28	11457	1	Gasket, outlet				
29	11456	1	Outlet Flange				
30	3130	4	Bolt - Outlet Flange				



11005
SPLASH BAFFLE



4173B
JAM RELEASE BAR

ORDER BY PART NUMBER, NOT CODE NUMBER

(All Parts F.O.B. Agency/Depot) (Include Serial and Model Number of Disposer when ordering)

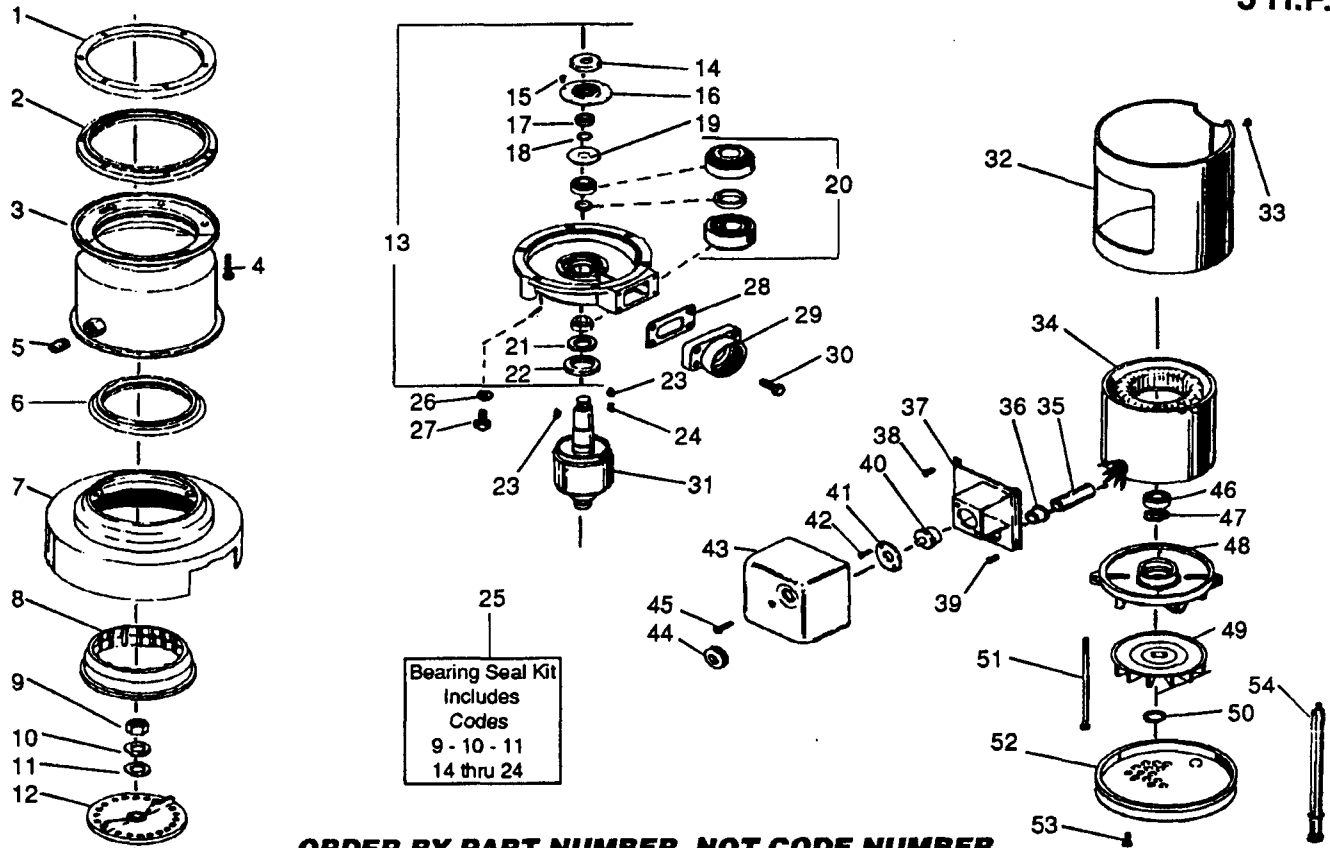


IN-SINK-ERATOR DIVISION
EMERSON ELECTRIC CO.
 4700-21 ST STREET
 RACINE, WISCONSIN 53406
 PHONE: (414) 554-5432

ISE
IN-SINK-ERATOR

COMMERCIAL DISPOSER
MODEL NO. SS300-21
(415 Volt / 50 Hz / 3 Phase)

Start Date:
04-07-82
Engineer Number:
13261D
3 H.P.



ORDER BY PART NUMBER, NOT CODE NUMBER

CODE NO.	PART NO.	NO. REQ.	DESCRIPTION	CODE NO.	PART NO.	NO. REQ.	DESCRIPTION
1	11004	1	Flange, Mounting	29	11456	1	Outlet, Flange
2	11016	1	Gasket, Mounting	30	3130	4	Bolt, Outlet Flange
3	11232	1	Body, Assy, Upper	31	13270	1	Rotor & Shaft Assy (Incl. code 46)
4	1491	6	Screw, Mounting	32	11721	1	Trim, Band
5	11227	1	Pipe, Plug	33	1836A	2	Screw
6	11008	1	Gasket, Shredder	34	13079	1	Stator Assy
7	11725	1	Body & Cover Assy	35	12357	1	Tubing, Insulation
8	11250	1	Shredder, Stationary	36	12384	1	Bushing
9	11255	1	Nut	37	12433A	1	Bracket Assy (Mounting)
10	11256	1	Washer	38	11448	4	Screw
11	12143	1	Washer, Fiber	39	2466A	1	Screw, Ground
12	13273	1	Shredder Assy, Rotor	40	13422AW	1	Overload, Protector
13		1	End Bell Assy, Upper (Incl. Codes 9-11&14-24)	41	12378	1	Clamp, Overload
14	13266	1	Shield	42	8221	2	Screw, Tapping
15	1269	6	Screw, Tapping	43	13396	1	Box, Terminal Assy (Incl. code 44)
16	13260	1	Seal Assy	44	12383	1	Grommet, Overload
17	13265	1	Sleeve, Spacer	45	12381	1	Screw
18	12860	1	O-Ring	46	12415	1	Bearing, Lower
19	11729	1	Slinger	47	12399	1	Washer, Spring
20	12638	1	Bearing Assy, Upper	48	11672	1	End Frame, Lower
21	11821	1	Support Washer	49	12395	1	Fan
22	11769	1	Oil and Water Retainer	50	12635	1	Ring, Retaining
23	11320	2	Key, Woodruff	51	8039	4	Bolt, Thru
24	11322	1	Key, Woodruff	52	11748	1	Cover, Bottom
25	13281	1	Bearing Seal Kit (Incl. codes 9-11 & 14-24)	53	8221	3	Screw
26	11444	6	Washer, Lock	54	11757	3	Tube Assy, Foot
27	11524	6	Screw				
28	11457	1	Gasket, Outlet				

ISE

IN-SINK-ERATOR

COMMERCIAL DISPOSER

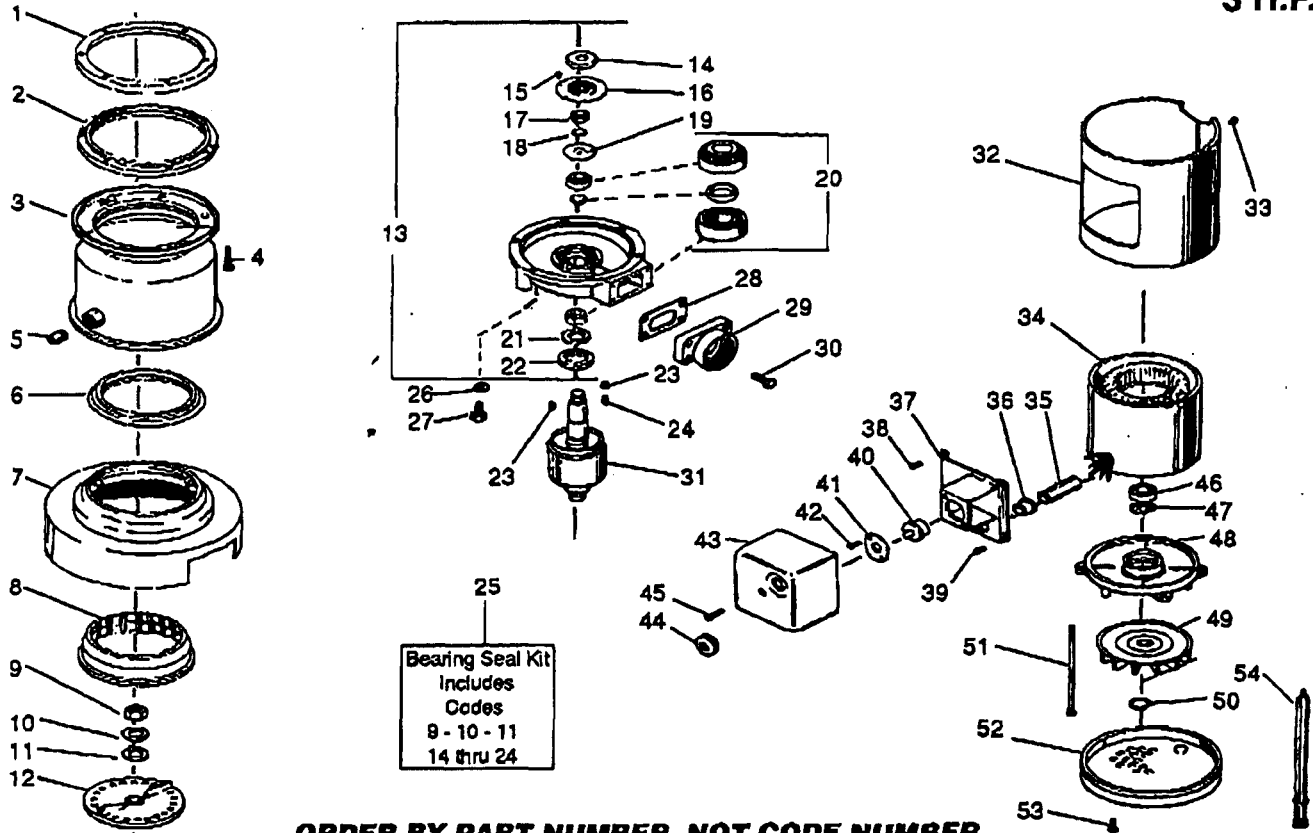
MODEL NO. SS300-22

(220 Volt / 50 Hz / 3 Phase)

Start Date:
04-07-82

Engineer
Number:
13261E

3 H.P.



ORDER BY PART NUMBER, NOT CODE NUMBER

CODE NO.	PART NO.	NO. REQ.	DESCRIPTION	CODE NO.	PART NO.	NO. REQ.	DESCRIPTION
1	11004	1	Flange, Mounting	29	11456	1	Outlet Flange
2	11016		Gasket, Mounting	30	3130	4	Bolt, Outlet Flange
3	11232		Body, Assy, Upper	31	13270	1	Rotor & Shaft Assy (Incl. code 46)
4	1491	6	Screw, Mounting	32	11721	1	Trim, Band
5	11227		Pipe, Plug	33	1836A	2	Screw
6	11008		Gasket, Shredder	34	13079	1	Stator Assy
7	11725		Body & Cover Assy	35	12357	1	Tubing, Insulation
8	11250		Shredder, Stationary	36	12364	1	Bushing
9	11255		Nut	37	12433B	1	Bracket Assy (Mounting)
10	11256		Washer	38	11448	4	Screw
11	12143		Washer, Fiber	39	2466A	1	Screw, Ground
12	13273		Shredder Assy, Rotor	40	13422AP	1	Overload, Protector
13	13320	1	End Bell Assy, Upper (Incl. Codes 9-11 14-24)	41	12378	1	Clamp, Overload
14	13266	1	Shield	42	5765	2	Screw, Tapping
15	1269	6	Screw, Tapping	43	12372	1	Box, Terminal Assy (Incl. code 44)
16	13260	1	Seal Assy	44	12383	1	Grommet, Overload
17	13265	1	Sleeve, Spacer	45	12381	1	Screw
18	12859	1	O-Ring	46	12415	1	Bearing, Lower
19	11729	1	Slinger	47	12396	1	Washer, Spring
20	12638	1	Bearing Assy, Upper	48	11672	1	End Frame, Lower
21	11821	1	Support Washer	49	12395	1	Fan
22	11769	1	on and Water Retainer	50	12635	1	Ring, Retaining
23	11320	2	Key, Woodruff	51	8039	4	Boll, Thru
24	11322	1	Key, Woodruff	52	11748	1	Cover, Bottom
25	13281	1	Bearing Seal Kit (Incl. codes 9-11& 14-24)	53	8221	3	Screw
26	11444	6	Washer, Lock	54	11757A	3	Tube Assy, Foot
27	11524	6	Screw				
28	11457	1	Gasket, Outlet				

IN-SINK-ERATOR

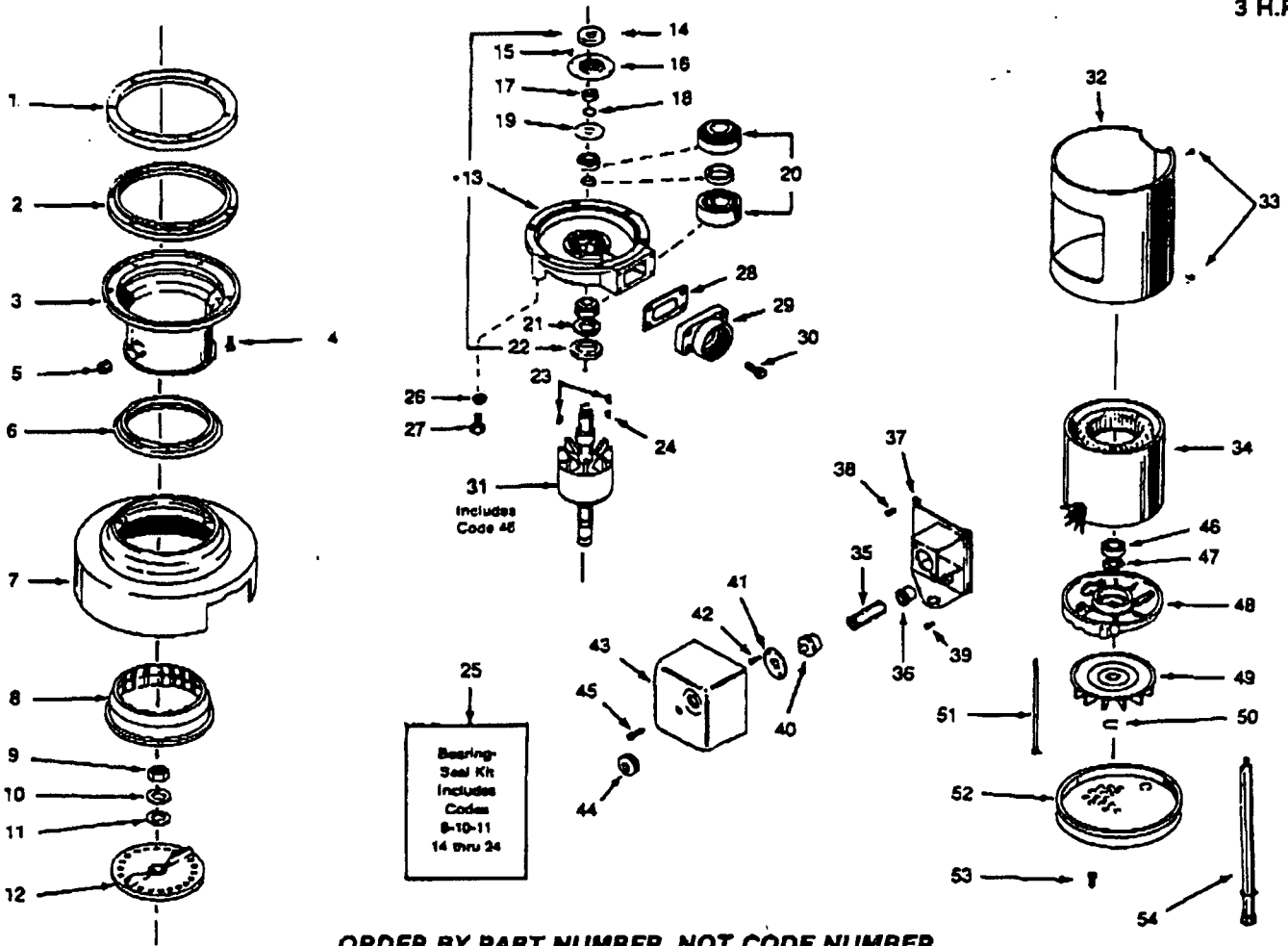
COMMERCIAL DISPOSER
MODEL NO. SS300-23

EXPORT
 (360/50/3ø)

Start Date:
 09-01-81

Engineer Number:
 13261G

3 H.P.



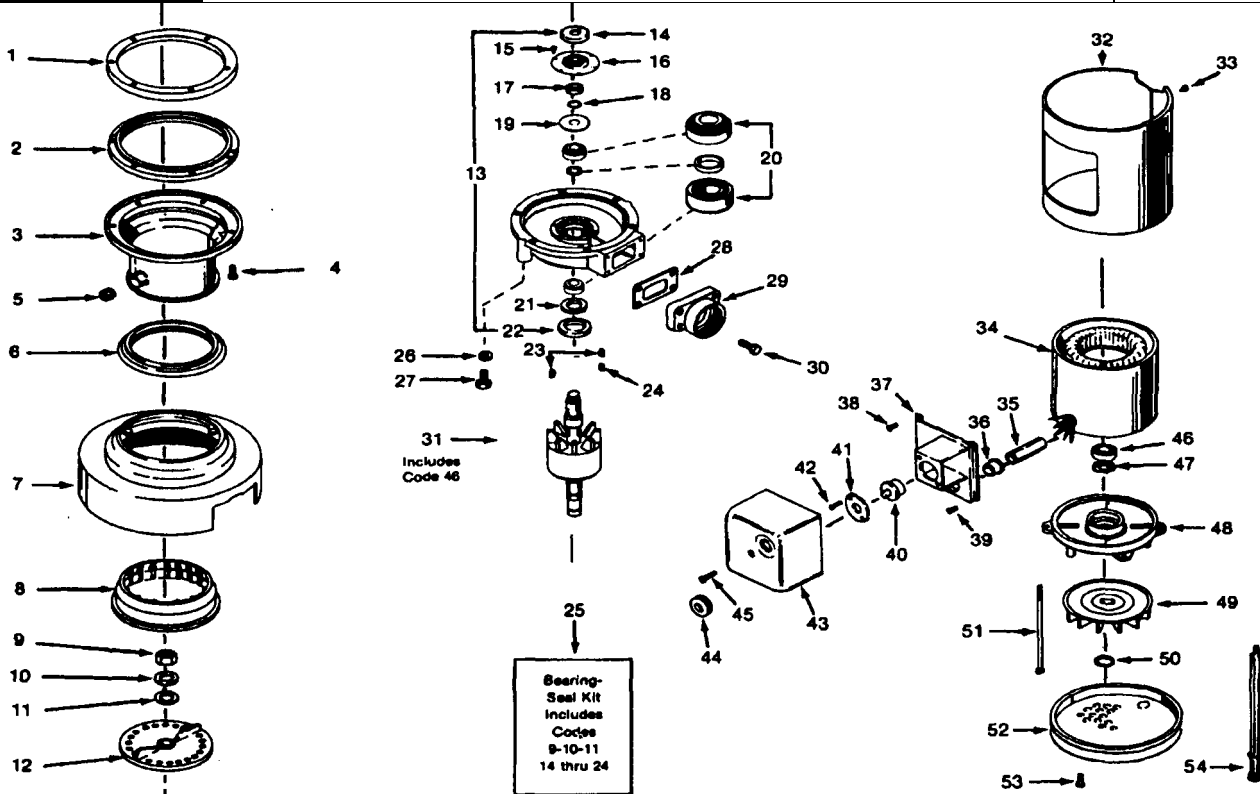
ORDER BY PART NUMBER, NOT CODE NUMBER

CODE NO.	PART NO.	NO. REQ.	DESCRIPTION	CODE NO.	PART NO.	NO. REQ.	DESCRIPTION
1	11004	1	Flange, Mounting	28	11457	1	Gasket, Tailpipe
3	11016	1	Gasket, Mounting	29	11456	1	Flange, Tailpipe
3	11232	1	Body Assy, Upper	30	2130	4	Screw, Tailpipe
4	1491	6	Screw, Mounting	31	13270A	1	Rotor & Shaft Assy (Incl Codes 46)
5	11227	1	Pipe Plug	32	11721	1	Trim, Bond
6	11008	1	Gasket, Shredder	33	1836-A	2	Screw
7	11725	1	Body & Cover Assy	34	13079A	1	Staler Assy
8	11250	1	Shredder, Stationary	35	12357	1	Insulation Tubing
9	11255	1	Nut	36	12384	1	Bushing
10	11256	1	Washer	37	12433B	1	Bracket (Terminal Box)
11	12143	1	Washer Fiber	38	11448	4	Screw
12	13273	1	Shredder Assy, Rotor	39	2466-A	1	Screw, Ground
13	13320	1	End Bell Assy, Upper (Incl Codes 9 - 11 & 14-24)	40	13422-AC	1	Overload, Protector
14	13266	1	Shield	4)	12378	1	Clamp, Overload
15	1269	12	Screw, Tapping	42	5765	2	Screw, Tapping
16	13260	1	Seal Assy	43	12372	1	Box, Terminal
17	13265	1	Sleeve, Spacer	44	12383	1	Grommet, Overload
18	12859	1	O-Ring	45	12381	1	Screw
19	11729	1	Slinger	46	12415		Bearing
20	12638	1	Bearing Assy, Upper	47	12399		Washer, Spring
21	11821	1	Washer, Thrust	48	11672		End Frame, Lower
22	11769	1	Seal, Water & Oil	49	12395		Fan
23	11320	2	Key, Woodruff	50	12635		Ring, Retaining
24	11322	1	Key, Woodruff	51	8039	4	Bolt, Thru
25	13281	1	Bearing Seal Kit (Incl Codes 9-11 & 14-24)	52	11748	1	Cover, Bottom
26	11444	6	Washer, Lock	53	8221	3	Screw
27	11524	6	Screw	54	11757-A	3	Tube Assy, Foot

**IN
SINK
ERATOR**

**COMMERCIAL DISPOSER
MODEL NO. SS300-24
(200 / Volt / 50/60 Hz / 3 Phase)**

Start Date:
3/99
Engineer Number:
13261H



ORDER BY PART NUMBER, NOT CODE NUMBER

CODE NO.	PART NO.	NO. REQ.	DESCRIPTION	CODE NO.	PART NO.	NO. REQ.	DESCRIPTION
1	11004	1	Flange, Mounting	29	13998	1	Flange, Tailpipe
2	11016	1	Gasket, Mounting	30	3130	4	Screw, Tailpipe
3	11232	1	Body Upper Assy	31	13270	1	Rotor & Shaft Assembly (Includes Code 46)
4	1491	6	Screw (1/4-20x3/4)	32	11721	1	Trim Band
5	11227	1	Plug, Pipe	33	1836A	2	Screw
6	11008	1	Gasket, Shredder	34	13079	1	Stator Assy
7	11725	1	Body & Cover Assy	35	12357	1	Insulation Tubing
8	11250	1	Shredder, Stationary	36	12384	1	Bushing
9	11255	1	Nut	37	12433A	1	Bracket (Terminal Box)
10	11256	1	Washer	38	11448	4	Screw (8-18x1/4)
11	12143	1	Washer, Fiber	39	2466A	1	Screw, Ground
12	13273	1	Rotor Shredder Assy	40	13422AW	1	Overload Protector
13	13320	1	Upper End Bell Assy (Incl Codes 9-11&14-24)	41	12378	1	Clamp, Overload
14	13266	1	Shield	42	8221	2	Screw, Tapping
15	1269	12	Screw	43	13396A	1	Box, Terminal Assy
16	13260	1	Seal Assy	44	12383	1	Grommet, Overload
17	13265	1	Sleeve, Spacer	45	12381	1	Screw
18	12859	1	O-Ring	46	12415	1	Bearing, Lower
19	11729	1	Slinger	47	13678	1	Washer, Spring
20	12638	1	Upper Bearing Assy	48	11672	1	End Frame, Lower
21	11821	1	Washer, Thrust	49	12395	1	Fan
22	11769	1	Water & Oil Seal	50	12635	1	Ring, Retaining
23	11320	2	Key, Woodruff	51	8039	4	Bolt, Thru
24	11322	1	Key, Woodruff	52	11748	1	Cover, Bottom
25	13281	1	Kit, Bearing Seal (Incl Codes 9-11& 14-24)	53	8221	3	Screw, Ground
26	11444	6	Washer, Lock	54	11757A	2	Tube, Foot Assembly
27	11524	6	Screw				
28	11457	1	Gasket, Tailpipe				

IN-SINK-ERATOR

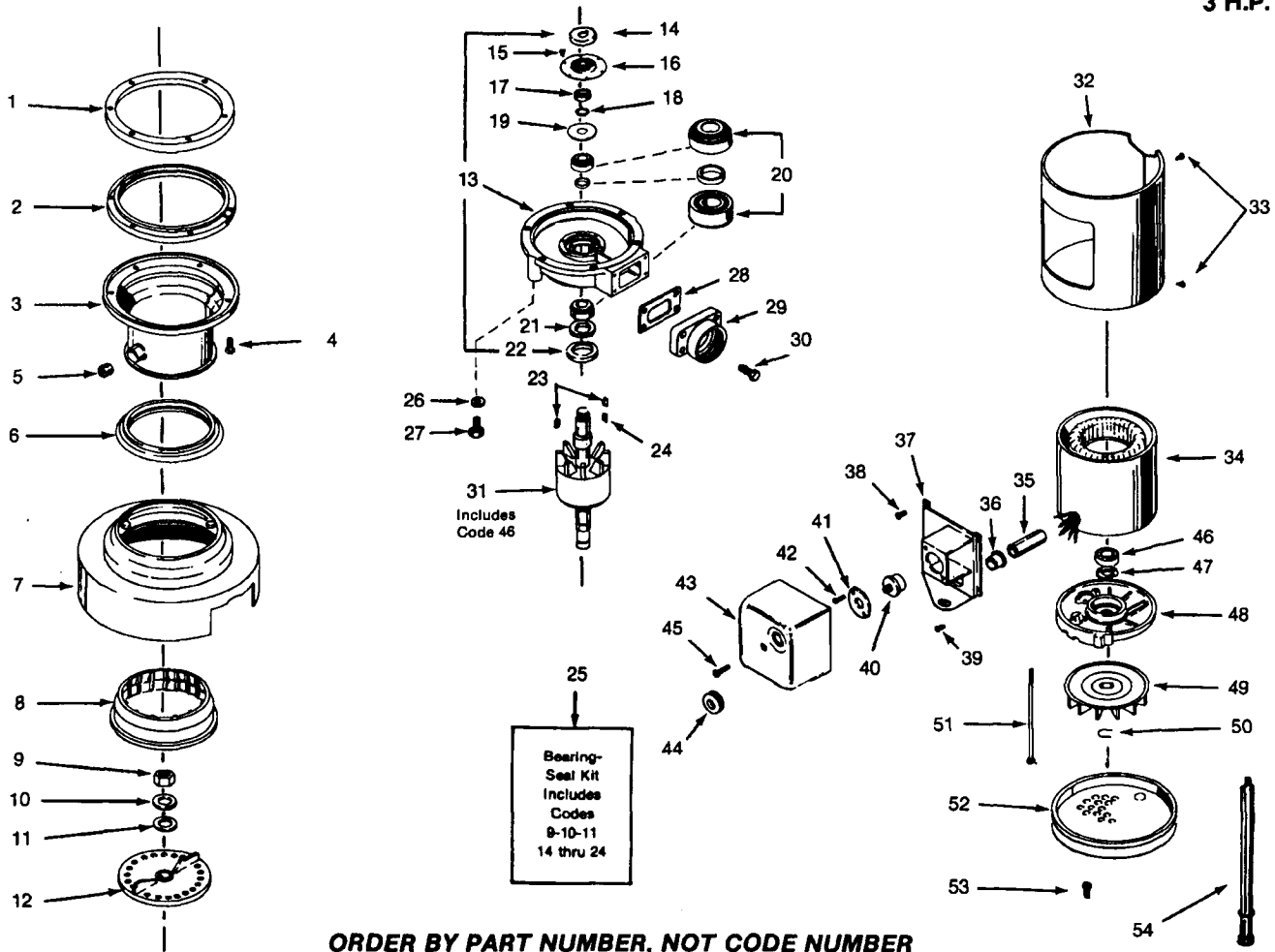
**COMMERCIAL DISPOSER
MODEL NO. SS300-25**

**USA
(208-230/ 460/60/3ø)**

**Start Date:
4/1/87**

**Engineer Number:
13389**

3 H.P.



ORDER BY PART NUMBER, NOT CODE NUMBER

CODE NO.	PART NO.	NO. REQ.	DESCRIPTION	CODE NO.	PART NO.	NO. REQ.	DESCRIPTION
1	11004	1	Flange, Mounting	28	11457	1	Gasket, Tailpipe
2	11016	1	Gasket, Mounting	29	11456	1	Flange, Tailpipe
3	11232	1	Body Assy, Upper	30	3130	4	Screw, Tailpipe
4	1491	6	Screw, Mounting	31	13270	1	Rotor & Shaft Assy (Incl Codes 46)
5	11227	1	Pipe Plug	32	11721	1	Trim, Band
6	11008	1	Gasket, Shredder	33	1836-A	2	Screw
7	11725	1	Body & Cover Assy	34	13079	1	Stator Assy
8	11250	1	Shredder, Stationary	35	12357	1	Insulation Tubing
9	11255	1	Nut	36	12384	1	Bushing
10	11256	1	Washer	37	12433-A	1	Bracket (Terminal Box)
11	12143	1	Washer, Fiber	38	11448	4	Screw
12	13273	1	Shredder Assy, Rotor	39	2466-A	1	Screw, Ground
13	13320	1	End Bell Assy, Upper (Incl Codes 9-11 & 14-24)	40	13422-AW	1	Overload, Protector
14	13266	1	Shield	41	12378	1	Clamp, Overload
15	1269	12	Screw, Tapping	42	5765	2	Screw, Tapping
16	13260	1	Seal Assy	43	12372	1	Box, Terminal
17	13265	1	Sleeve, Spacer	44	12383	1	Grommet, Overload
18	12859	1	O-Ring	45	12381	1	Screw
19	11729	1	Slinger	46	12415	1	Bearing
20	12638	1	Bearing Assy, Upper	47	12399	1	Washer, Spring
21	11821	1	Washer, Thrust	48	11672	1	End Frame, Lower
22	11769	1	Seal, Water & Oil	49	12395	1	Fan
23	11320	2	Key, Woodruff	50	12635	1	Ring, Retaining
24	11322	1	Key, Woodruff	51	8039	4	Bolt, Thru
25	13281	1	Bearing Seal Kit (Incl Codes 9- 11 & 14-24)	52	11748	1	Cover, Bottom
26	11444	6	Washer, lock	53	7887	3	Screw
27	11524	6	Screw	54	11757-A	3	Tube Assy, Foot

IN-SINK-ERATOR

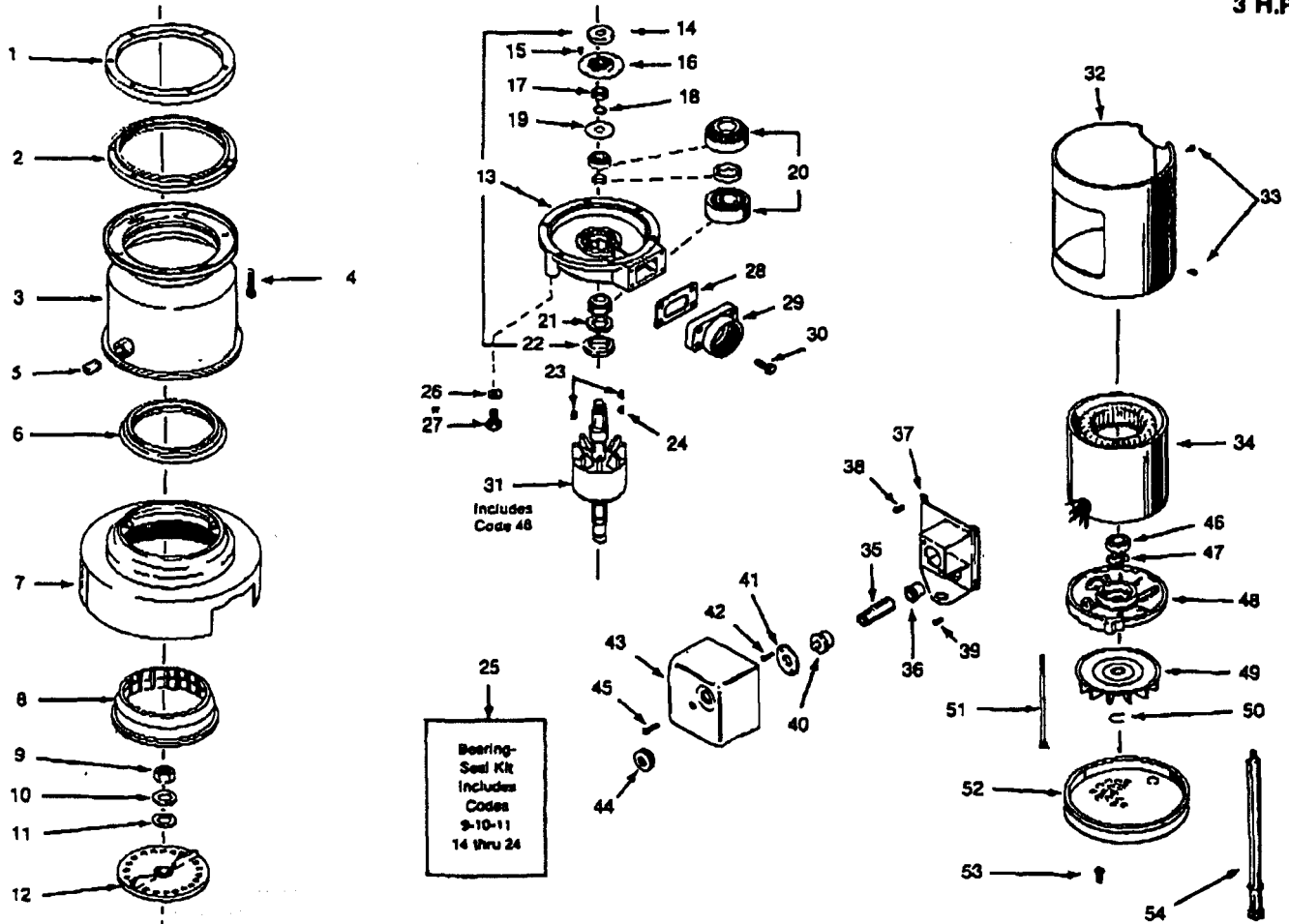
COMMERCIAL DISPOSER MODEL NO. SS300-26

CANADIAN
(208-230-460/60/3ø)

Start Date:
4/1/87

Engineer Number:
13389A

3 H.P.



ORDER BY PART NUMBER, NOT CODE NUMBER

CODE NO.	PART NO.	NO. REQ.	DESCRIPTION	CODE NO.	PART NO.	NO. REQ.	DESCRIPTION
1	11004	1	Flange, Mounting	28	11457	1	Gasket, Tailpipe
2	11016	1	Gasket, Mounting	29	11456	1	Flange, Tailpipe
3	11232	1	Body Assy, Upper	30	3130	4	Screw, Tailpipe
4	1491	6	Screw, Mounting	31	13270	1	Rotor & Shaft Assy (Incl Codes 46)
5	11227	1	Pipe Plug	32	11721	1	Trim, Band
6	11008	1	Gasket, Shredder	33	1836-A	2	Screw
7	11725	1	Body & Cover Assy	34	13079	1	Stator Assy
8	11250	1	Shredder, Stationary	35	12357	1	Insulation Tubing
9	11255	1	Nut	36	12384	1	Bushing
10	11256	1	Washer	37	12433-A	1	Bracket (Terminal Box)
11	12143	1	Washer, Fiber	38	11448	4	Screw
122	13273	1	Shredder Assy, Rotor	39	2466-A	1	Screw, Ground
13	13320	1	End Bell Assy, Upper (Incl Codes 9-11 & 14-24)	40	13422AW	1	Overload, Protector
14	13266	1	Shield	41	12378	1	Clamp, Overload
15	1269	12	Screw, Tapping	42	5765	1	Screw, Tapping
16	13260	1	Seal Assy	43	12372	1	Box, Terminal
17	13265	1	Sleeve, Spacer	44	12383	1	Grommet, Overload
18	12859	1	O-Ring	45	12381	1	Screw
19	11729	1	Slinger	46	12415	1	Bearing
20	12638	1	Bearing Assy, Upper	47	12399	1	Washer, Spring
21	11821	1	Washer, Thrust	48	11672	1	End Frame, Lower
22	11769	1	Seal, Water & Oil	49	12395	1	Fan
23	11320	2	Key, Woodruff	50	12635	1	Ring, Retaining
24	11322	1	Key, Woodruff	51	8039	4	Bolt, Thru
25	13281	1	Bearing Seal Kit (Incl Codes 9- 11 & 14-24)	52	11748	1	Cover, Bottom
26	11444	6	Washer, Lock	53	7887	3	Screw
27	11524	6	Screw	54	11757-A	3	Tube Any, Foot

IN-SINK-ERATOR

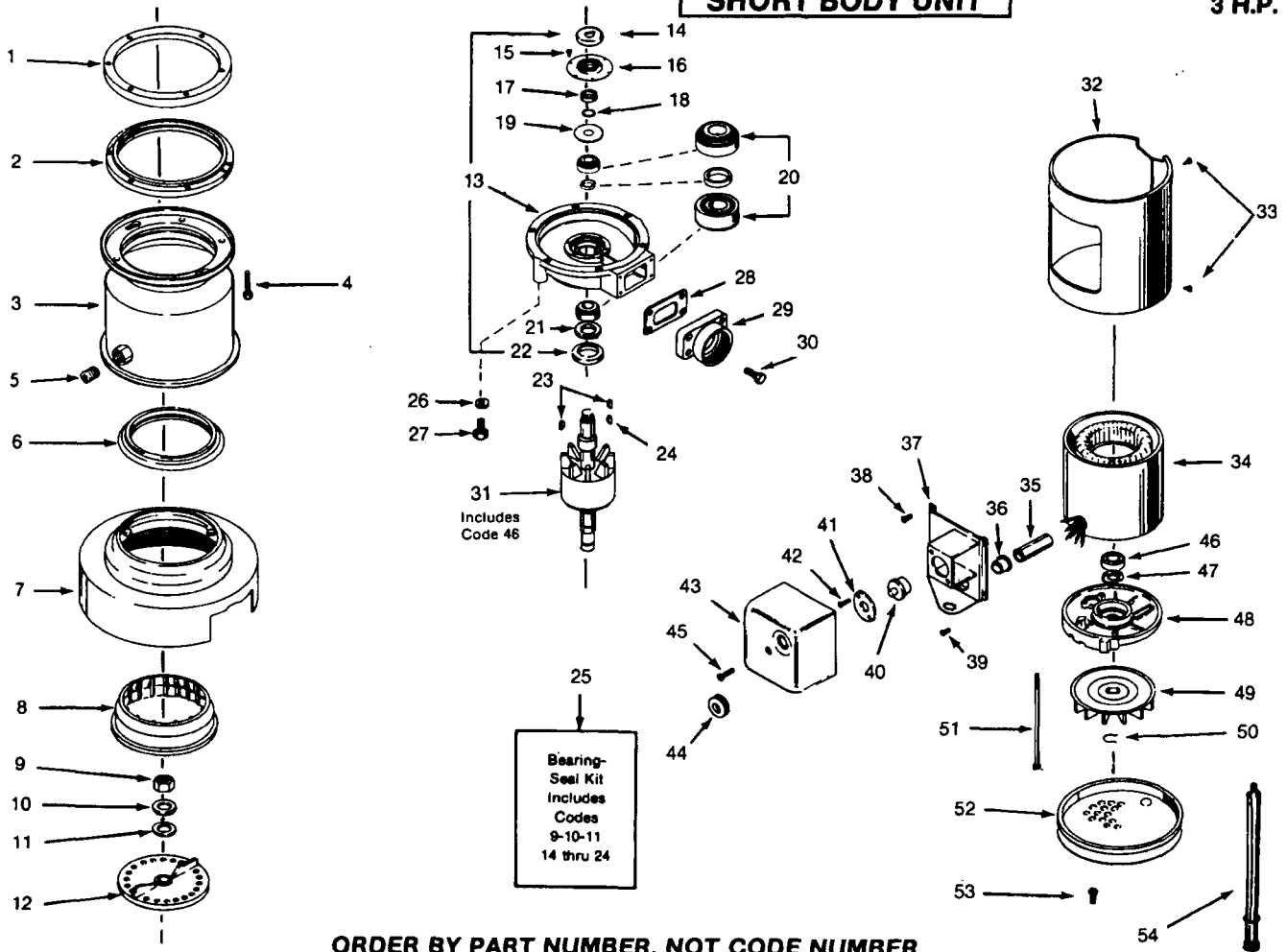
COMMERCIAL DISPOSER MODEL NO. SS300-27 USA (208-230/460/60/3ø)

Start Date:
5/88

Engineer
Number:
13389B

SHORT BODY UNIT

3 H.P.



ORDER BY PART NUMBER, NOT CODE NUMBER

CODE NO.	PART NO.	NO. REQ.	DESCRIPTION	CODE NO.	PART NO.	NO. REQ.	DESCRIPTION
1	11004	1	Flange, Mounting	28	11457	1	Gasket, Tailpipe
2	11016	1	Gasket, Mounting	29	11456	1	Flange, Tailpipe
3	11232-B	1	Body Assy, Upper	30	3130	4	Screw, Tailpipe
4	1491	6	Screw, Mounting	31	13270	1	Rotor & Shaft Assy (Incl Codes 46)
5	11227	1	Pipe Plug	32	11721	1	Trim, Band
6	11008	1	Gasket, Shredder	33	1836-A	2	Screw
7	11725	1	Body & Cover Assy	34	13079	1	Stator Assy
8	11250	1	Shredder, Stationary	35	12357	1	Insulation Tubing
9	11255	1	Nut	36	12384	1	Bushing
10	11256	1	Washer	37	12433-A	1	Bracket (Terminal Box)
11	12143	1	Washer, Fiber	38	11448	4	Screw
12	13273	1	Shredder Assy, Rotor	39	2466-A	1	Screw, Ground
13	13320	1	End Bell Assy, Upper (Incl Codes 9 - 11 & 14-24)	40	13422-AW	1	Overload, Protector
14	13266	1	Shield	41	12378	1	Clamp, Overload
15	1269	12	Screw, Tapping	42	5765	2	Screw, Tapping
16	13260	1	Seal Assy	43	12372	1	Box, Terminal
17	13265	1	Sleeve, Spacer	44	12383	1	Grommet, Overload
18	12859	1	O-Ring	45	12381	1	Screw
19	11729	1	Slinger	46	12415	1	Bearing
20	12638	1	Bearing Assy, Upper	47	12399	1	Washer, Spring
21	11821	1	Washer, Thrust	48	11672	1	End Frame, Lower
22	11769	1	Seal, Water & Oil	49	12395	1	Fan
23	11320	2	Key, Woodruff	50	12635	1	Ring, Retaining
24	11322	1	Key, Woodruff	51	8039	4	Bolt, Thru
25	13281	1	Bearing Seal Kit (Incl Codes 9-11 & 14-24)	52	11748	1	Cover, Bottom
26	11444	6	Washer, Lock	53	7887	3	Screw
27	11524	6	Screw	54	11757-A	3	Tube Assy, Foot

ISE

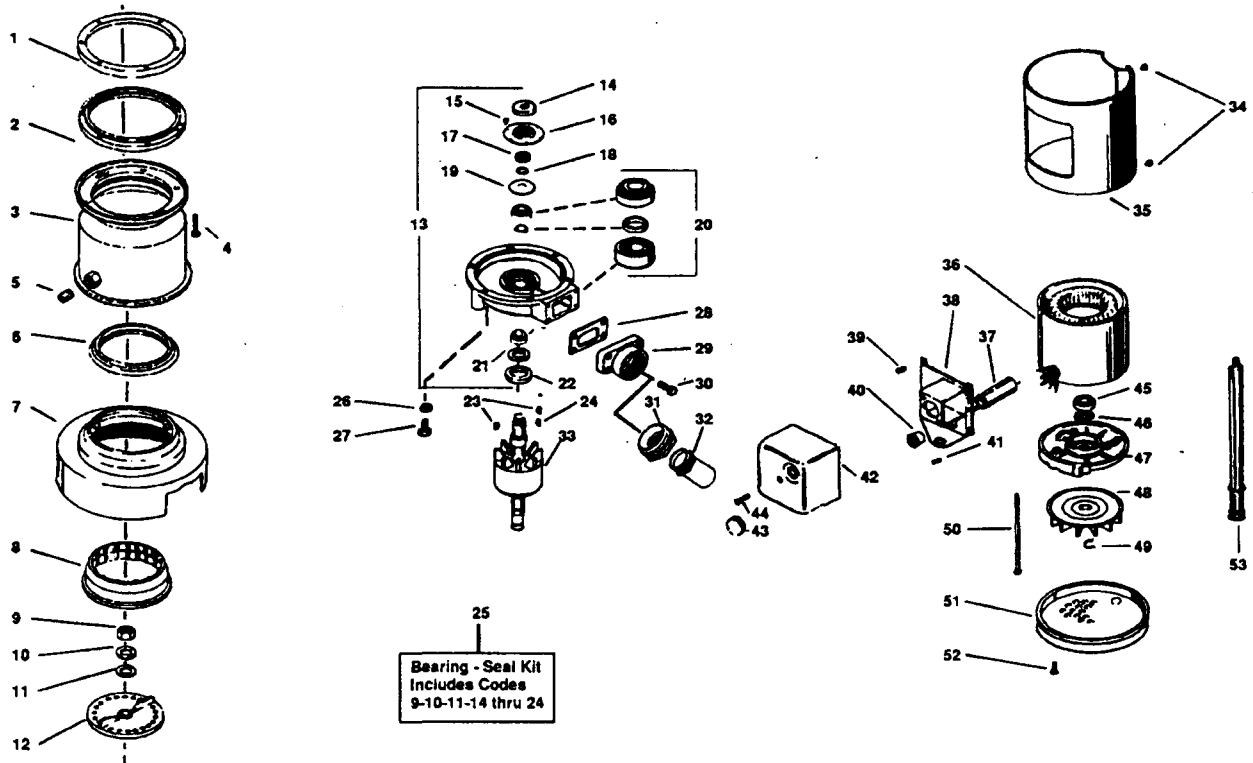
IN-SINK-ERATOR

COMMERCIAL DISPOSER MODEL NO. SD300

EXPORT
415 Volt / 50 Hz / 3 Phase

Start Date:
11-01-89

Engineer Number:
13533



ORDER BY PART NUMBER, MOT CODE NUMBER

CODE NO.	PART NO.	NO. REQ.	DESCRIPTION	CODE NO.	PART NO.	NO. REQ.	DESCRIPTION
1	11004	1	Flange, Mounting	31	13563	1	Adaptor 3" to 2" pipe
2	11016		Gasket, Mounting	32	13562	1	Adaptor 2" pipe to tube
3	11232-B		Body Assy, Upper	33	13270	1	Rotor & Shaft Assy (Incl Code 45)
4	1491	6	Screw, Mounting	34	1836-A	2	Screw
5	11227		Pipe Plug	35	11721	1	Trim, Band
6	11008		Gasket, Shredder	36	13079	1	Stator Assy
7	11725		Body & Cover Assy	37	12357	1	Insulation Tubing
8	11250		Shredder, Stationary	38		1	Bracket Assy, Mounting
9	11255		Nut	39	11448	4	Screw
10	11256		Washer	40	12384	1	Bushing
11	12143		Washer, Fiber	41	2466-A	1	Screw, Ground
12	13273		Shredder Assy, Rotor	42	12372	1	Box, Terminal
13	13320		End Bell Assy, Upper (Inc Codes 9-11 & 14-24)	43	13559	1	Grommet
14	13266		Shield	44	12381	1	Screw
15	1269	2	Screw, Tapping	45	12415	1	Bearing, Lower
16	13260		Seal Assy	46	12399	1	Washer, Spring
17	13265		Sleeve, Spacer	47	11672	1	End Frame, Lower
18	12859		O-Ring	48	12395	1	Fan
19	11729		Slinger	49	12635	1	Ring, Retaining
20	12638		Bearing Assy, Upper	50	8039	3	Bolt, Thru
21	11821		Washer, Thrust	51	11748	1	Cover, Bottom
22	11769		Seal, Water & Oil	52	7887	3	Screw
23	11320	2	Key, Woodruff	53	11757-A	3	Tube Assy, Foot
24	11322	1	Key, Woodruff				
25	13081	1	Bearing Seal Kit (Inc Codes 9-11 & 14-24)				
26	11444	6	Washer, Lock				
27	11524	6	Screw				
28	11457	1	Gasket, Tailpipe				
29	11456	1	Flange, Tailpipe				
30	3130	4	Screw, Tailpipe				