



F 1 8 F18 DP



This dishwasher must be installed on a level, rigid, nonflammable surface. Ensure that the machine is level by installing the feet (shipped in the wash tank of the machine) and adjusting the leveling. Be sure to provide adequate space for water, drain and electrical connections.

WATER SUPPLY

A 1/2" -140°F (60°C) hot water line with 30 PSI flow pressure and shut-off valve is required. A pressure reducing valve* may be required. A 1/2" flexible supply hose* is recommended from the shut-off valve to the water fill valve on the dishwasher to facilitate maintenance and servicing of the machine. A 90° elbow adapter for the water inlet valve is furnished with the machine and can be found in the wash tank with the adjustable feet. There should be sufficient hose length to permit the machine to be pulled out for service.

DRAIN

- F-18: This dishwasher has a gravity drain. Maximum height of the floor drain should not exceed 6" (15cm). A 1.5" ED flexible drain hose* is recommended to facilitate maintenance and servicing of the machine.
- F-18 DP: This dishwasher is equipped with an automatic drain pump that will pump the drain water to a maximum height of 36" (0.9 meter). A 1" ED flexible drain hose* is recommended to facilitate maintenance and servicing of the machine. It is important not to reduce the size of this hose. A 1" check-valve* **is required on drain pump equipped models**. Drain pump equipped machines have a white button on the control panel beside the green power button.

DRAIN PUMP MODELS ARE FACTORY BUILT. GRAVITY DRAIN UNITS CANNOT BE CONVERTED TO PUMPED DRAIN UNITS. There should be sufficient hose length to permit the machine to be pulled out for service.

ELECTRICAL

A 208-240 volt, 60 Hz, Single Phase circuit is required for this unit. Check the rating plate on the machine for amp draw. In spite of the fact that the rating plate shows 208 volts, the unit is designed function properly on 208 volts to 240 volts. The top & back panels must be removed for the electrical hook-up. The terminal block is located inside the back cover. Pass the cable through the cable strain relief and connect the wires to the terminals L1 (brown wire), L2 (blue wire) & Ground (yellow & green wire). Replace the top & back panels being careful not to pinch or kink any wires or hoses. There should be sufficient cable length to permit the machine to be pulled out for service. **DO NOT TURN ON THE POWER TO THE MACHINE UNTIL THE WATER SUPPLY & DRAIN LINES HAVE BEEN CONNECTED.**

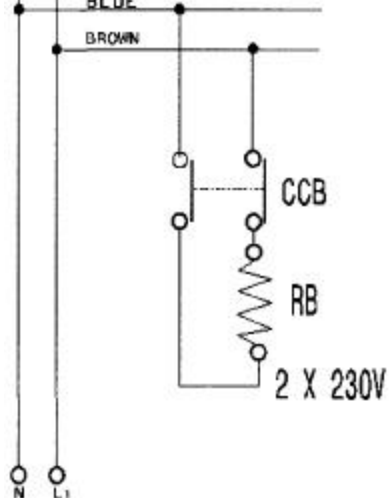
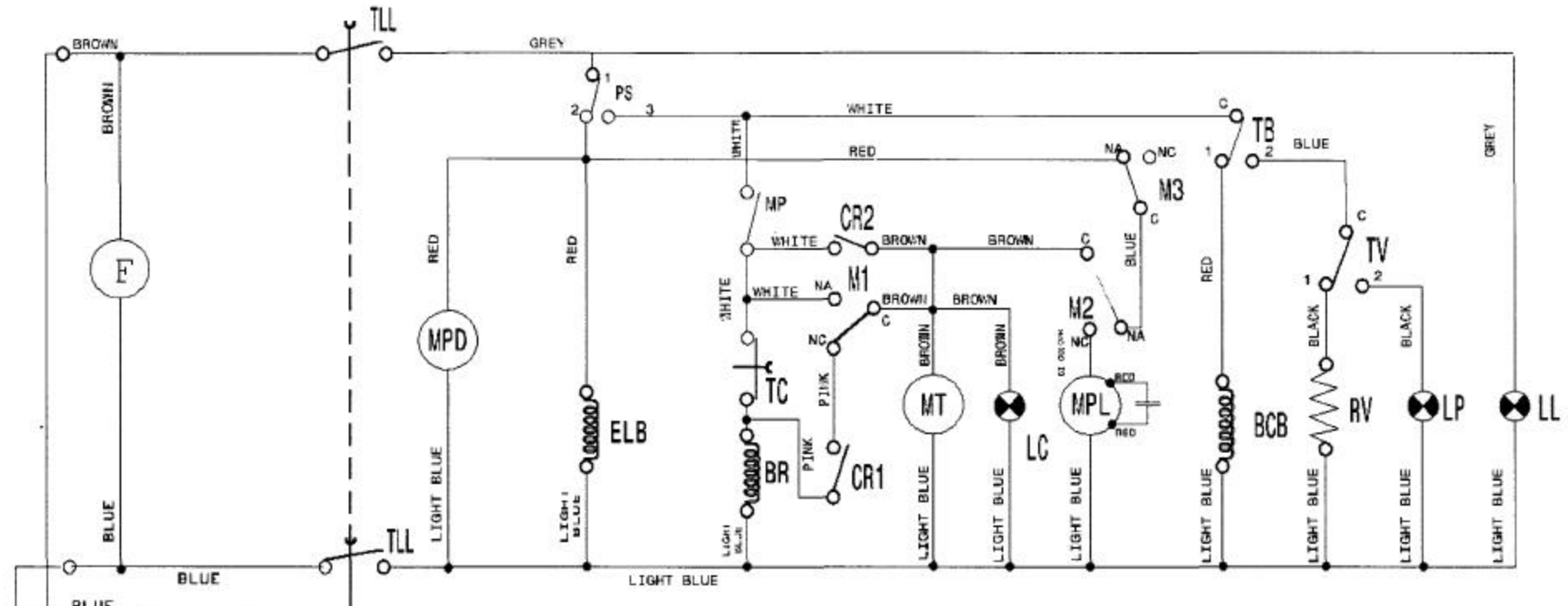


IMPORTANT NOTE

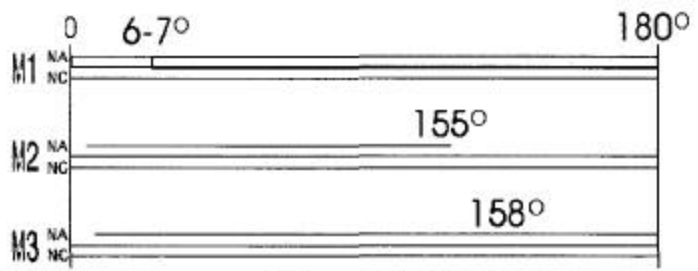
Reasonable access to and around the machine for service must be provided. Disconnecting of hard plumbing or removal of counter tops or cabinets, etc.. for servicing is not covered by warranty.

* - not supplied

F-18 ELECTRICAL DIAGRAM



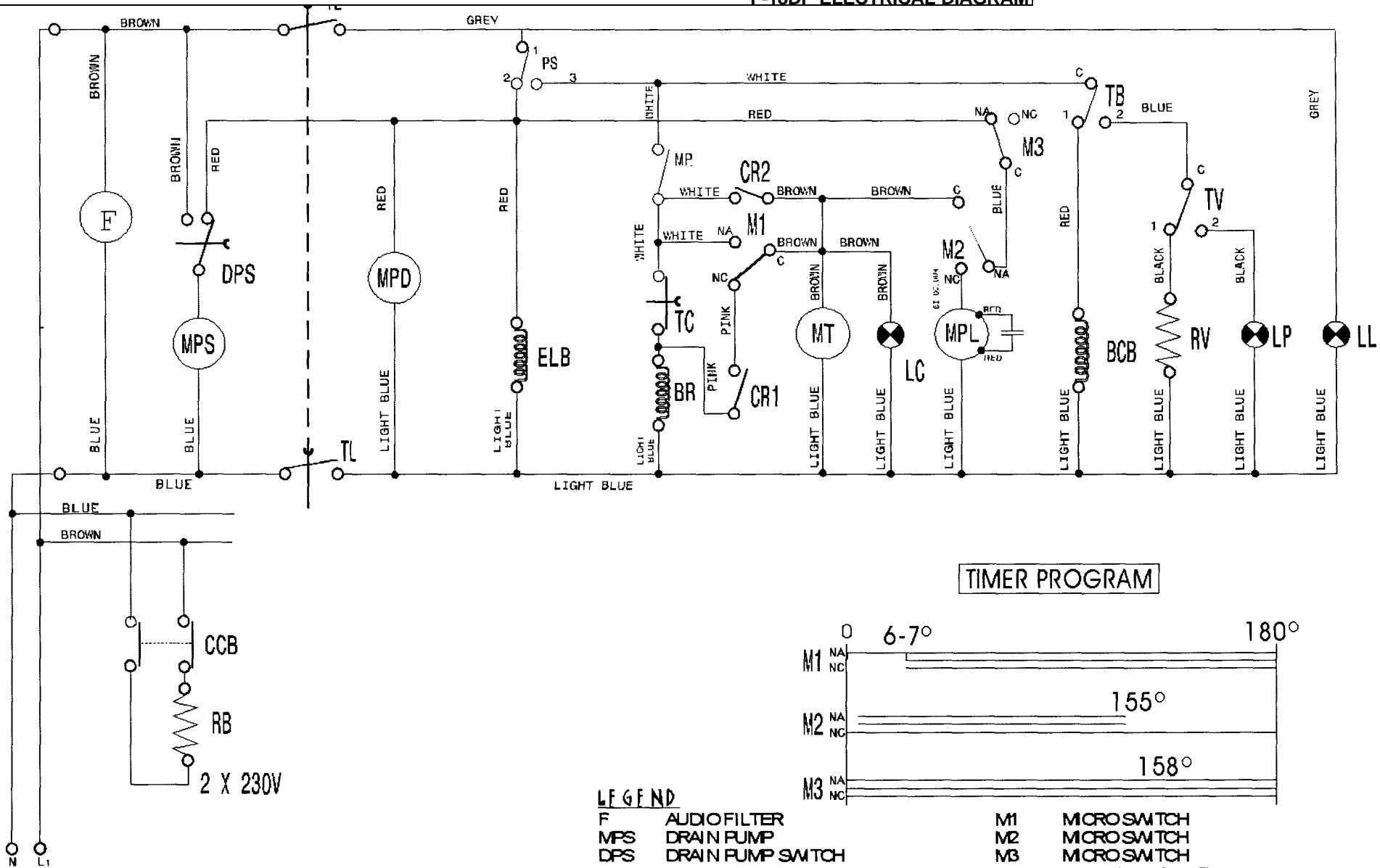
TIMER PROGRAM



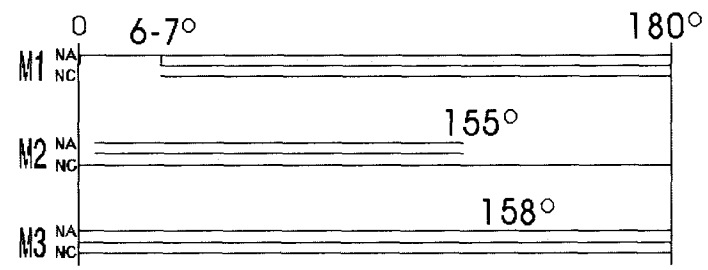
LEGEND

- | | | | |
|--------|------------------------|-----|----------------------------|
| F | AUDIO FILTER | TV | TANK THERMOSTAT |
| TL | POWER SWITCH | RV | TANK ELEMENT |
| PS | PRESSOSTAT | LP | PILOT LIGHT READY MACHINE |
| ELB | SOLENOID VALVE | LL | PILOT LIGHT POWER |
| TC | CYCLE SWITCH | CCB | BOOSTER CONTACTOR CONTACTS |
| BR | MICRO RELAY COIL | RB | BOOSTER ELEMENT |
| CR 1-2 | MICRO RELAY | | |
| MPD | DETERGENT PUMP | | |
| MPL | WASH PUMP | | |
| MP | DOOR SWITCH | | |
| MT | TIMER MOTOR | | |
| M1 | MICRO SWITCH | | |
| M2 | MICRO SWITCH | | |
| M3 | MICRO SWITCH | | |
| LC | PILOT LIGHT CYCLE | | |
| TB | BOOSTER THERMOSTAT | | |
| CB | BOOSTER CONTACTOR COIL | | |

F-18DP ELECTRICAL DIAGRAM



TIMER PROGRAM

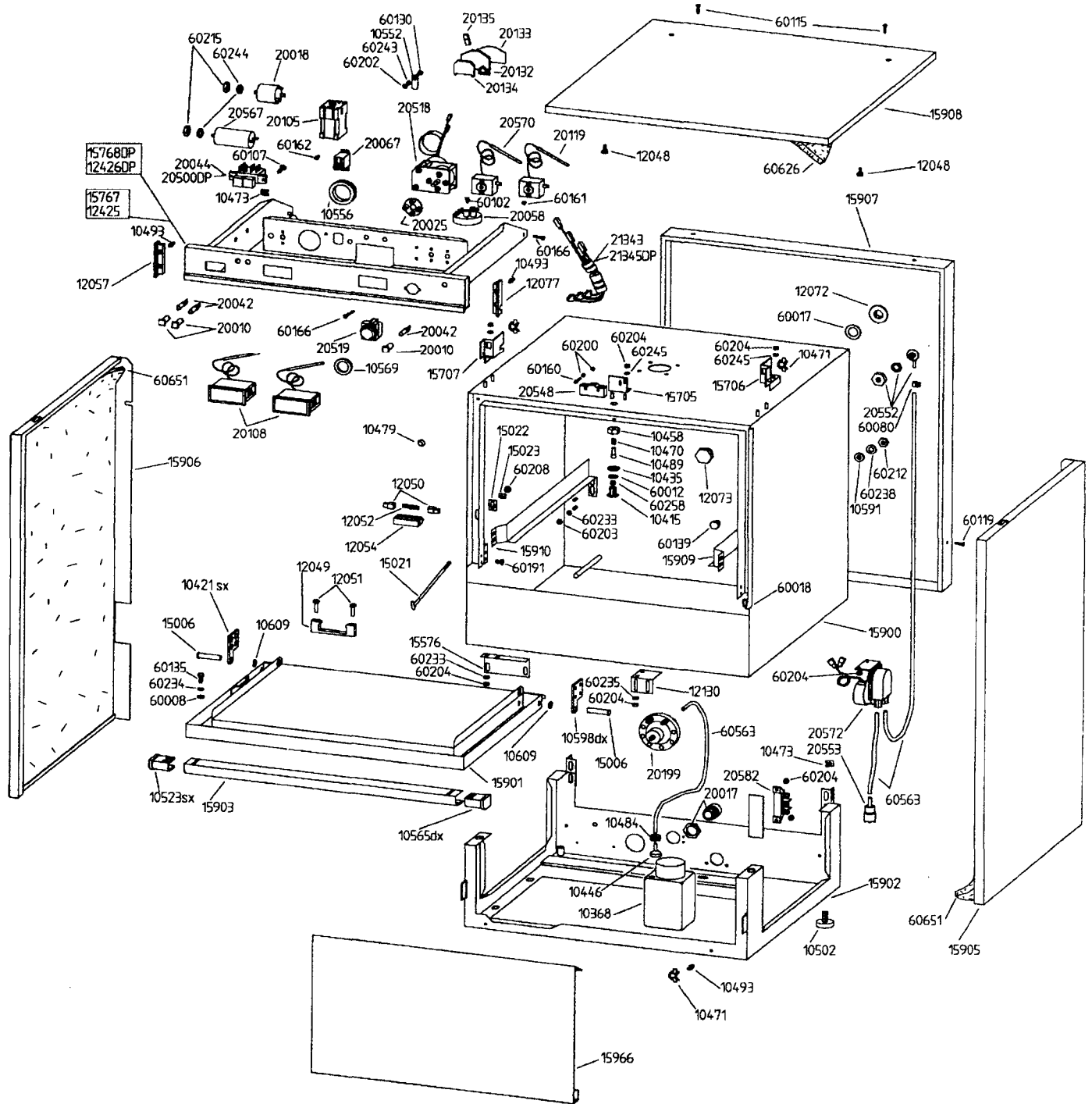


LEGEND

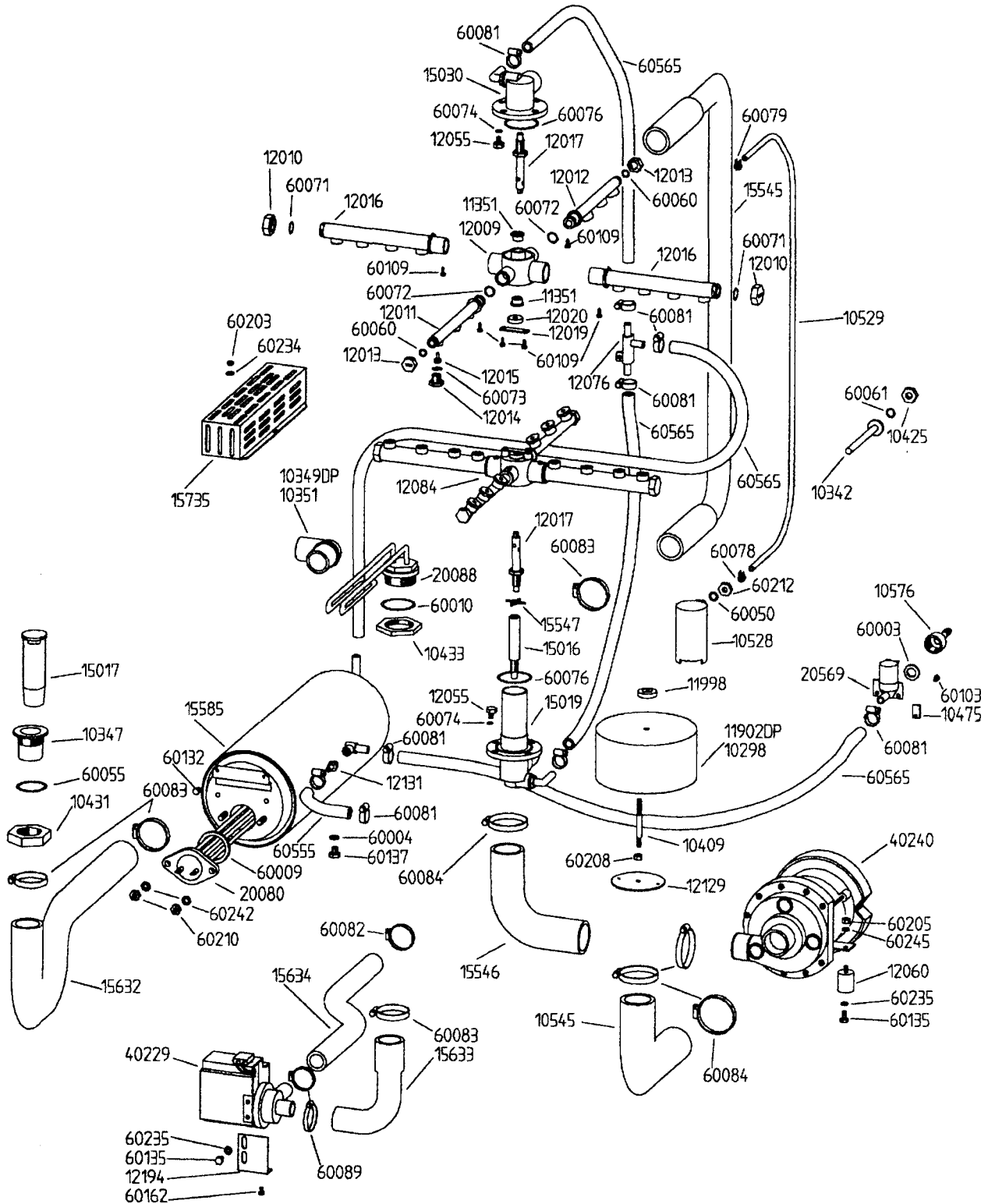
- | | | | |
|--------|-------------------|-----|----------------------------|
| F | AUDIO FILTER | M1 | MICRO SWITCH |
| MPS | DRAIN PUMP | M2 | MICRO SWITCH |
| DPS | DRAIN PUMP SWITCH | M3 | MICRO SWITCH |
| TL | POWER SWITCH | LC | PILOT LIGHT CYCLE |
| PS | PRESSOSTAT | TB | BOOSTER THERMOSTAT |
| ELB | SOLENOID VALVE | BCB | BOOSTER CONTACTOR COIL |
| TC | CYCLE SWITCH | TV | TANK THERMOSTAT |
| BR | MICRO RELAY COIL | RV | TANK ELEMENT |
| CR 1-2 | MICRO RELAY | LP | PILOT LIGHT READY MACHINE |
| MPD | DETERGENT PUMP | LL | PILOT LIGHT POWER |
| MPL | WASH PUMP | CCB | BOOSTER CONTACTOR CONTACTS |
| MP | DOOR SWITCH | RB | BOOSTER ELEMENT |
| MT | TIMER MOTOR | | |

VE T-TECH
 70 M COTE DE LIESSE, MONREAL QUE. H4T 1E7
 ELECTRICAL SCHEMATICS F 18 DP
 AUG. 18, 1998

JET-TECH F 18DP



JET-TECH F 18DP



F-18 / F-18DP PARTS LIST

10298	PUMP FILTER	12050	DOOR CATCH
10342	CONNECTOR DIAMETER 6,5	12051	SCREW
10347	CONNECTOR	12052	SPRING
10349	CONNECTOR	12054	DOOR CATCH BODY
10350	CONNECTOR	12055	SCREW
10351	CONNECTOR	12057	HANDLE SOCKET
10368	RINSE AID CONTAINER	12060	MOTOR MOUNT
10409	ROD	12072	NUT
10415	NUT FOR DOOR SWITCH	12073	PLUG
10421	LEFT HINGE	12076	MANIFOLD
10425	NUT	12077	HANDLE SOCKET
10431	NUT	12084	WASH/RINSE ARM
10433	NUT	12129	DISK
10435	NUT	12130	BRACKET
10446	RINSE AID FILTER	12131	RUBBER-CARRIER
10458	NUT	12194	SQUARE
10469	SPRING	12425	F 18 (98) JET-TECH DECAL
10470	SPRING	12426	F 18DP (98) JET-TECH DECAL
10471	SPRING	15006	PIVOT
10472	SPRING	15016	PIVOT SUPPORT CF 50
10473	SPRING	15017	OVERFLOW PIPE
10475	SPRING	15019	KIT SUPPORT + EXTENSION
10479	BUFFER	15021	TENSION ROD DOOR
10484	FAIR LEAD	15022	GUIDE TENSION ROD DOOR
10489	PIVOT	15023	BLOCK TENSION ROD DOOR
10493	PIVOT	15030	KIT SUPERIOR SUPPORT ARM
10502	ADJUSTABLE FOOT	15545	TUBE
10523	HANDLE SOCKET	15546	TUBE
10528	AIR TRAP	15547	SPACER FOR PIVOT
10529	TUBE	15576	SQUARE
10545	TUBE	15585	BOOSTER TANK
10556	FAIR LEAD	15632	TUBE
10565	HANDLE SOCKET	15633	TUBE DP
10569	DISK	15634	TUBE DP
10576	NUT + RUBBER -- CARRIER SOLENOID V.	15705	SQUARE MICROSWITCH
10591	WASHER	15706	SQUARE RIGHT GUIDE
10598	RIGHT HINGE	15707	SQUARE LEFT GUIDE
10609	SPACER	15735	ELEMENT COVER
11351	BUSHING	15767	CONTROL PANEL
11902	FILTER	15768	CONTROL PANEL DP
11998	NUT	15900	WASH TANK
12007	SUPPORT	15901	DOOR
12008	SUPPORT	15902	BASE
12009	HUB	15903	HANDLE
12010	PLUG	15905	RIGHT LAT. PANEL
12011	RIGHT RINSE ARM	15906	LEFT LAT. PANEL
12012	SUPERIOR RINSE ARM	15907	BACK PANEL
12013	PLUG	15908	TOP
12014	RINSE JET	15909	RIGHT BASKET GUIDE
12015	RINSE JET INSERT	15910	LEFT BASKET GUIDE
12016	WASH ARM	15966	KICK PANEL
12017	PIVOT	15967	PLATE FOR TERMINAL FV 110 - FV 77
12019	PLATE	20010	LENS
12020	NUT	20017	FIXING CABLE
12021	CONNECTOR	20018	FILTER
12048	PIVOT	20025	TIMER BRACKET
12049	DOOR HOOK	20035	DOOR MICROSWITCH

20042	LIGHT	60119	SCREW
20044	POWER SWITCH	60130	SCREW
20058	PRESSURE SWITCH	60132	SCREW
20067	RELAY 12A 230V	60135	SCREW
20080	BOOSTER ELEMENT 400V 6000W	60137	SCREW
20088	TANK ELEMENT 230V 2800W	60139	SCREW
20105	CONTACTOR 220/240V 50/60Hz	60160	SCREW
20108	THERMOMETER DOUBLE SCALE	60161	SCREW
20119	RINSE THERMOSTAT	60162	SCREW
20132	TERMINAL	60164	SCREW
20133	PLATE 249 -- 116	60166	SCREW
20134	TERMINAL 281 - 313	60191	SCREW
20135	STAPLE	60200	NUT
20199	RINSE AID PUMP	60201	NUT
20500	POWER SWITCH DP	60202	NUT
20518	TIMER 3'22" 60HZ	60203	NUT
20519	CYCLE START BUTTON	60204	NUT
20532	TERMINAL BLOCK CF 50 400V	60205	NUT
20548	DOOR MICROSWITCH UL F 18	60208	NUT
20567	CAPACITOR 16MF 240 UL	60210	NUT
20569	SOLENOID VALVE 1A 240V 60Hz UL	60212	NUT
20570	WASH THERMOSTAT	60215	NUT
20582	TERMINAL FV 110	60231	WASHER
21343	WIRING HARNESS F 18 JET-TECH	60232	WASHER
21345	WIRING HARNESS F 18DP JET-TECH	60233	WASHER
30049	PEG RACK 20" X 20"	60234	WASHER
30105	OPEN RACK 20" X 20"	60235	WASHER
40229	DRAIN PUMP 60HZ	60238	WASHER
40240	MOTOR PUMP 220V 60Hz 0.75HP	60242	WASHER
60003	GASKET	60243	WASHER
60004	GASKET 15x10x2	60244	WASHER
60008	GASKET	60245	WASHER
60009	GASKET	60258	BALL
60010	O RING	60555	HOSE
60012	GASKET	60563	HOSE
60017	GASKET	60565	HOSE
60018	GASKET		
60050	O RING		
60055	O RING		
60060	O RING		
60061	O RING		
60071	O RING		
60072	O RING		
60073	O RING		
60074	O RING		
60076	O RING		
60078	CLAMP		
60079	CLAMP		
60081	CLIP		
60083	CLIP		
60084	CLIP		
60089	CLIP		
60102	SCREW		
60103	SCREW		
60107	SCREW		
60109	SCREW		
60115	SCREW 4MAX30		