

# SERVICE INSTRUCTIONS

www.keatingofchicago.com

**KEATING**  
OF CHICAGO, INC. ®

1-800-KEATING

## ADDING LEGS to a 2000 MODEL KEATING GRIDDLE

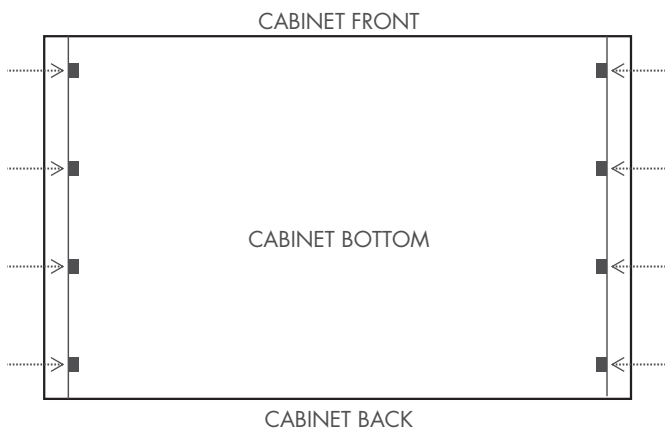
### YOUR KIT INCLUDES:

PART #	QTY	DESCRIPTION
032328	2	1/4"-20 x 3/4" HEX SCREWS
031567	2	1/4"-20 SERRATED FLANGE NUT
015262	4	5/16" SELF-TAPPING HEX BOLT

Adding legs to a 2000 Model Griddle is best accomplished by tipping the griddle so that its back is against the ground, exposing the underside of the griddle. Do not raise it up to gain access to where the legs will be added: there is not enough support in the griddle cabinet bottom to do so.

### INSTRUCTIONS:

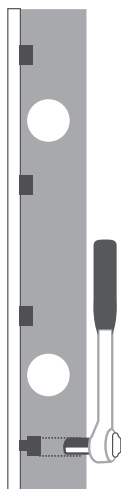
1. Remove the eight (8) existing Hex Screws with a 3/8" socket wrench from each side of the cabinet bottom.



2. Place new leg channels in the small holes against the cabinet side. Return the Hex Screws to their original holes, starting with the center two screws.



3. Tighten your screws with the 3/8" Socket Wrench on an extension through the leg channel.



If working on a Gas Griddle, proceed to step 4.

If working on an Electric Griddle, skip to step 5.

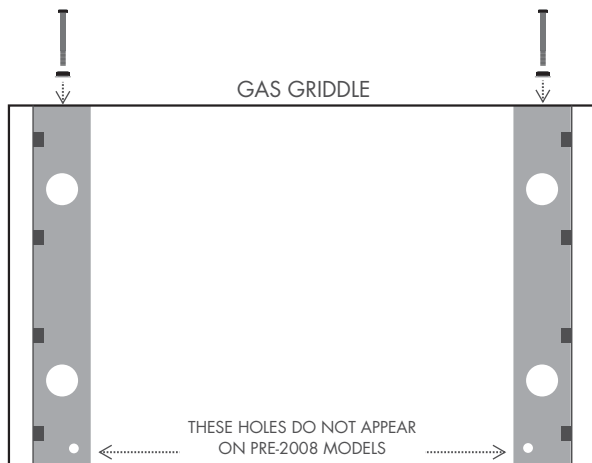
# SERVICE INSTRUCTIONS

www.keatingofchicago.com

**KEATING**  
OF CHICAGO, INC. ®

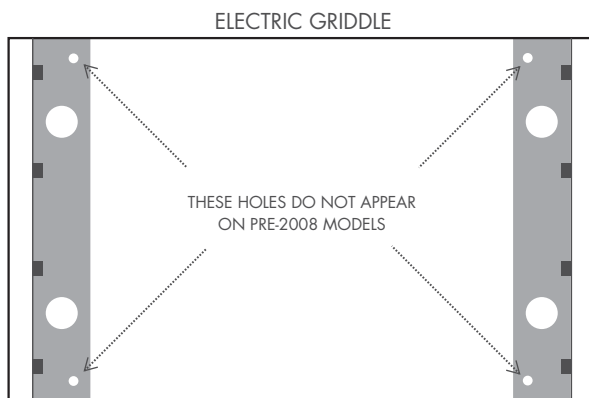
1-800-KEATING

## ADDING LEGS to a 2000 MODEL KEATING GRIDDLE (CONTINUED)



4. On Gas Griddles, add a 1/4"-20 x 3/4" Hex Screw (part # 032328) through the front edge of the cabinet bottom and leg channel. The holes for this exist and will be inline if the leg channel is installed properly. Secure with 1/4"-20 Serrated Flange Nut (part # 031567).

Near the rear of the leg channel, behind the leg away from the cabinet side, is the hole for running in the 5/16"-18 self-tapping Hex Bolt (part # 015262). On Griddles manufactured after 2008 the mating hole in the cabinet bottom exists. On griddles manufactured 2008 and before, the customer will need to drill a 1/4" diameter hole in the cabinet bottom and ratchet in the 5/16"-18 self-tapping Hex Bolt.



5. On Electric Griddles, the lower heat shield does not allow for the 1/4"-20 screws to be added through the front of the cabinet bottom. So on the Electric Griddles, the additional hardware is two (2) 5/16"-18 self-tapping Hex Bolts screwed in through each leg channel into the cabinet bottom (in the hole behind the rear leg and in its corresponding hole located in front of the leg.) On griddles made after 2008, the mating holes exist in the cabinet bottom. Griddles made 2008 and before require four (4) 1/4" diameter holes drilled into the cabinet bottom.