

INSTALLATION AND SERVICE MANUAL FOR REMOTE

VRTX™ WATER TREATMENT SYSTEM

Part Number 65-1400-250 (250 GPM)

SPECIFICATIONS

WATER CONNECTION (SEE NOTES BELOW):

INLET: 3" 150 POUND FLANGE

OUTLET: 6" 150 POUND FLANGE

DIMENSIONS OVERALL:

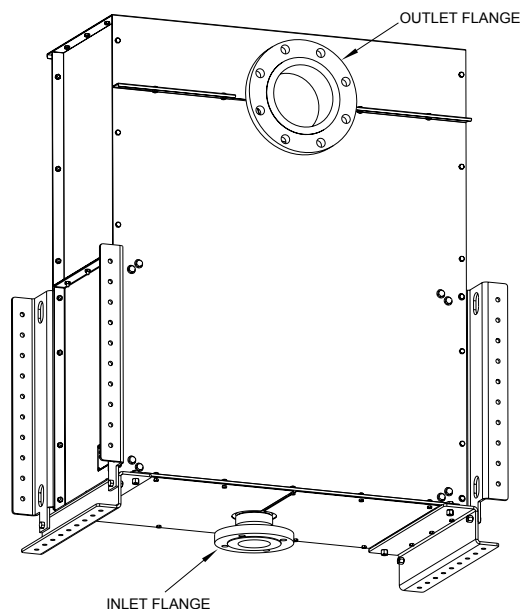
WIDTH: 41.67 INCHES (1058 MM)

DEPTH: 22.20 INCHES (564 MM)

HEIGHT: 49.00 INCHES (1245 MM)

SHIPPING WEIGHT: 550.0 POUNDS (249.48 KG)

OPERATING WEIGHT: 620.0 POUNDS (281.23 KG)



This manual is an initial issue.

VRTX™ Technologies

5807 Business Park
San Antonio, TX 78218
(210) 661-8800

For further Information:
e-mail: vrta@vrtxttech.com
Or see our Web Site
www.vrtx-technologies.com

DATE: 08/20/04
P.N. 28-0573

TABLE OF CONTENTS

SPECIFICATIONS	COVER
TABLE OF CONTENTS	1
RECEIVING	1
1. LIFTING AND HOISTING THE VRTX UNIT	2
2. INSTALLATION OF UNIT	2
3. ILLUSTRATIONS AND PARTS LISTINGS	3
3.1 PLUMBING ASSEMBLY	3
3.2 SUPPORT FRAME ASSEMBLY, PART 1	4
3.3 SUPPORT FRAME ASSEMBLY, PART 2	5
3.4 INSULATION, INTERIOR, AND EXTERIOR PANELS	6
3.5 VIEWS	7

RECEIVING

CAUTION

INSPECT THE UNIT FOR DAMAGE! IF DAMAGE IS EVIDENT, NOTIFY THE FREIGHT COMPANY IMMEDIATELY AND FILE A DAMAGE CLAIM REPORT.

Each unit is tested and inspected before shipment. At the time of shipment, the carrier accepts the unit and any claim for damage must be made with the carrier. Upon receiving units from the delivering carrier, carefully inspect the carton for visible indication of damage. If damage exists, have the carrier note same on the bill of lading and file a claim with the carrier.

CAUTION

BE SURE TO FOLLOW LOCAL PLUMBING CODES WHEN MAKING ALL CONNECTIONS.

1. LIFTING AND HOISTING VRTX UNIT

- 1.1 The unit is designed with two (2) lifting bail holes per side mounting rail. Upon hoisting the unit, a minimum of four (4) holes should be used, with appropriate spreader bars and rigging.
- 1.2 The unit is also designed to be lifted with a fork lift. *When a fork lift is being used for installation, care should be taken to avoid hitting or damaging the inlet flange, on the bottom of the unit, with the forks.*

2. INSTALLATION OF UNIT

IMPORTANT

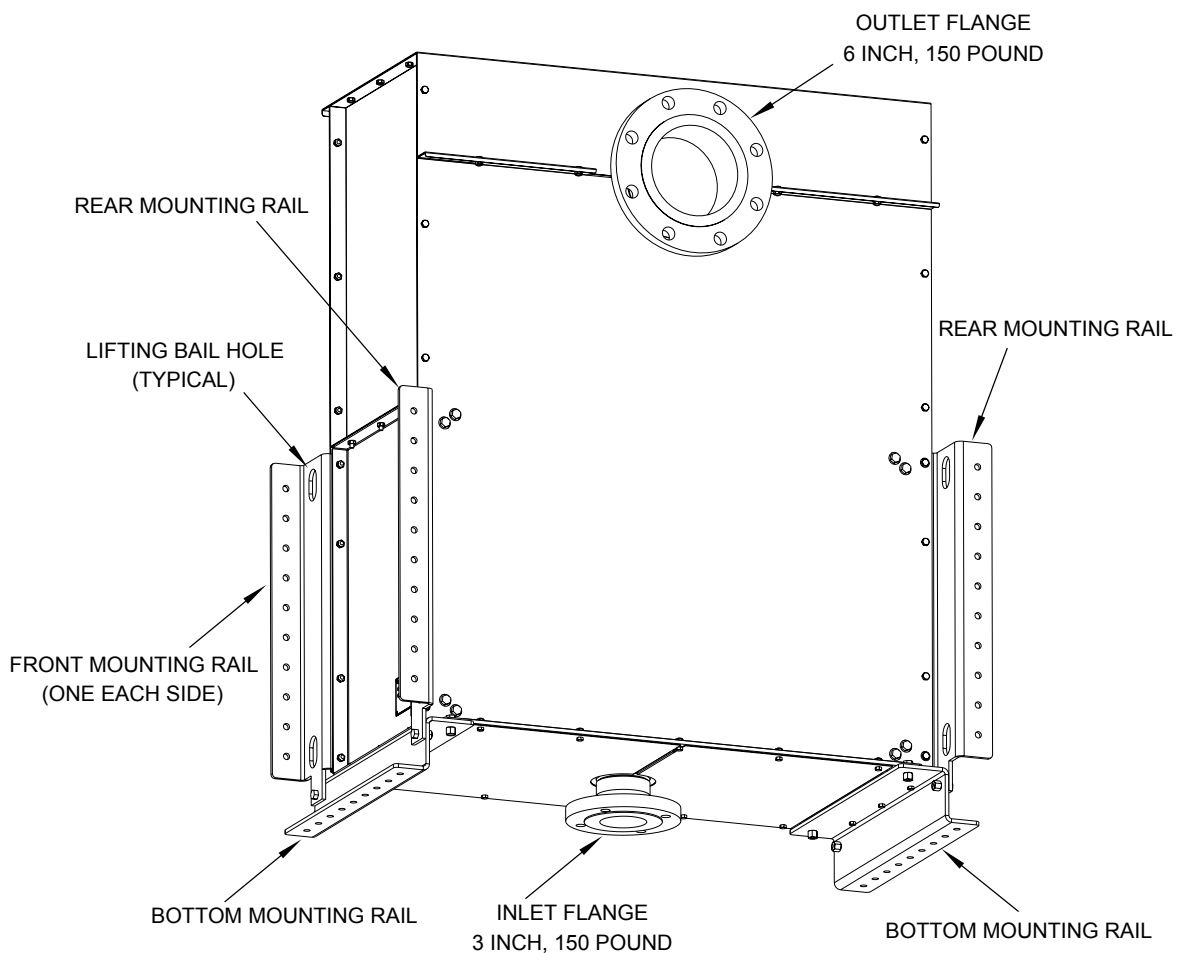
THE UNIT SHOULD BE MOUNTED, AS SHOWN IN FIGURE 1, WITH THE INLET ORIENTED IN A DOWNWARD POSITION. NO OTHER MOUNTING ORIENTATION IS SUGGESTED.

The unit is designed to be mounted either by the front, rear or bottom mounting rails (see isometric view, Figure 1).

- 2.1 If mounting by the front or rear rails (using two rails minimum), a minimum of eight (8) Grade 5, 3/8" capscrews with metallic lock nuts should be used [two (2) on each end of each rail] for stability.
- 2.2 If mounted by the bottom rails, a minimum of four (4) Grade 5, 3/8" capscrews with metallic lock nuts should be used [one (1) on each end of each rail] for stability.
- 2.3 A bellows type flex coupling is required on both the inlet and outlet plumbing connection.

CAUTION

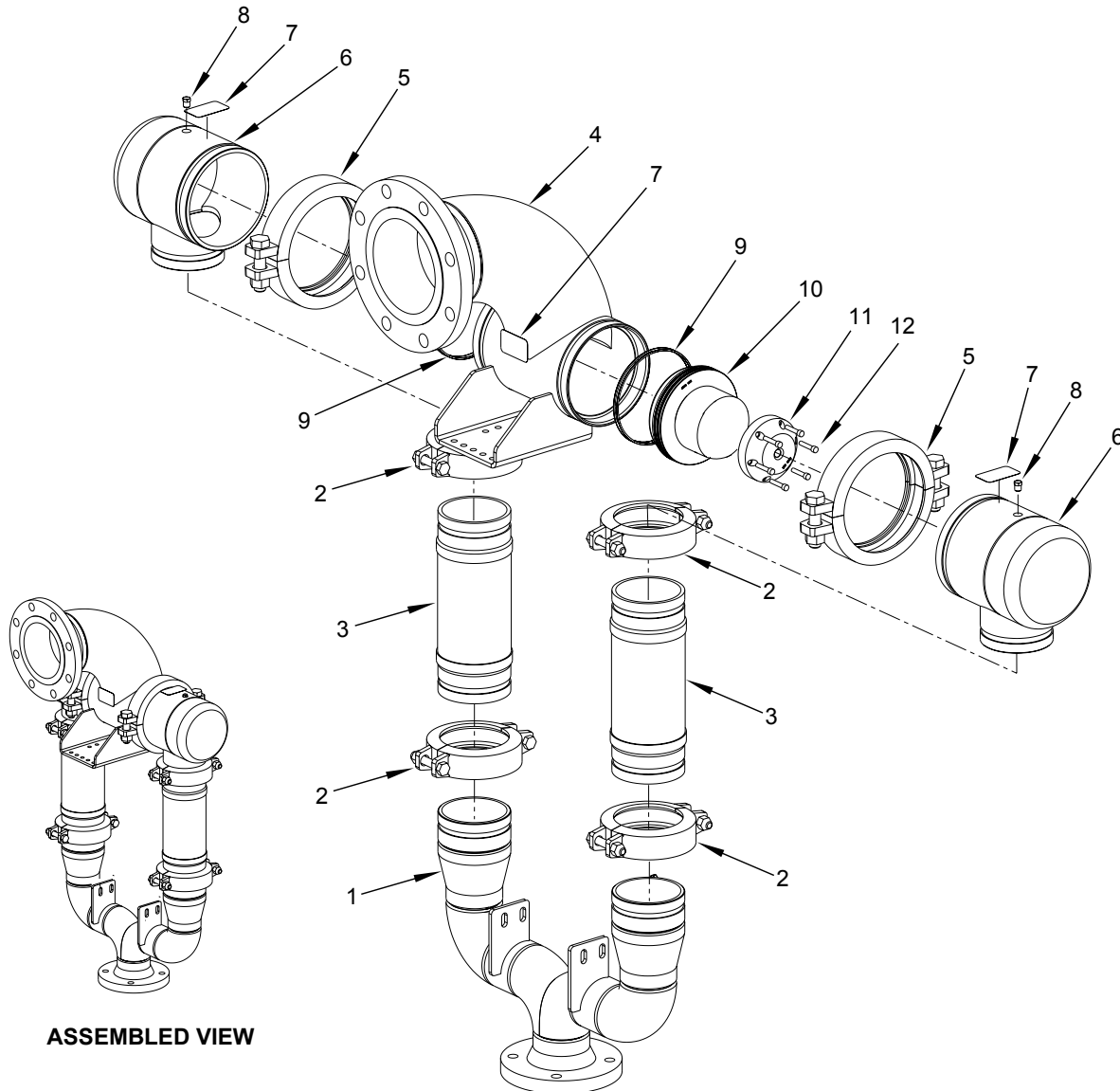
ENSURE THAT MOUNTING LOCATION WILL ADEQUATELY SUPPORT THE 620 POUND OPERATING WEIGHT OF THE UNIT.



**Mounting Details
Figure 1**

3. ILLUSTRATIONS AND PARTS LISTINGS

3.1 PLUMBING ASSEMBLY



ASSEMBLED VIEW

ITEM	PART NO.	DESCRIPTION	QUANTITY
1	51-6061	Weldment, Tree, SS	1
2	03-0334	Clamp, RIDGIDITE, 7400, 4.00" (Galvanized EPDM Seal)	4
3	01-2152	Connector, Pump, 4.00"	2
4	51-5869	Weldment, Center	1
5	03-0333	Clamp, RIDGIDITE, 7400, 6.00" (Galvanized EPDM Seal)	1
6	51-6063	Weldment, End	2
7	06-2895	Label, DO NOT REMOVE	1
8	04-1273	Plug, 1/8 NPT	3
9	02-0309	O-Ring, 2-163 (BUNA-N) (Two per nozzle)	4
10	10-0592	Nozzle, 250 GPM	2
11	10-0748	Cap, Nozzle2	2
12	04-1337	Screw, 1/4 - 20 X 1.25	12

NOTE:

All wetted components are 304 or 316 stainless steel, unless otherwise noted.

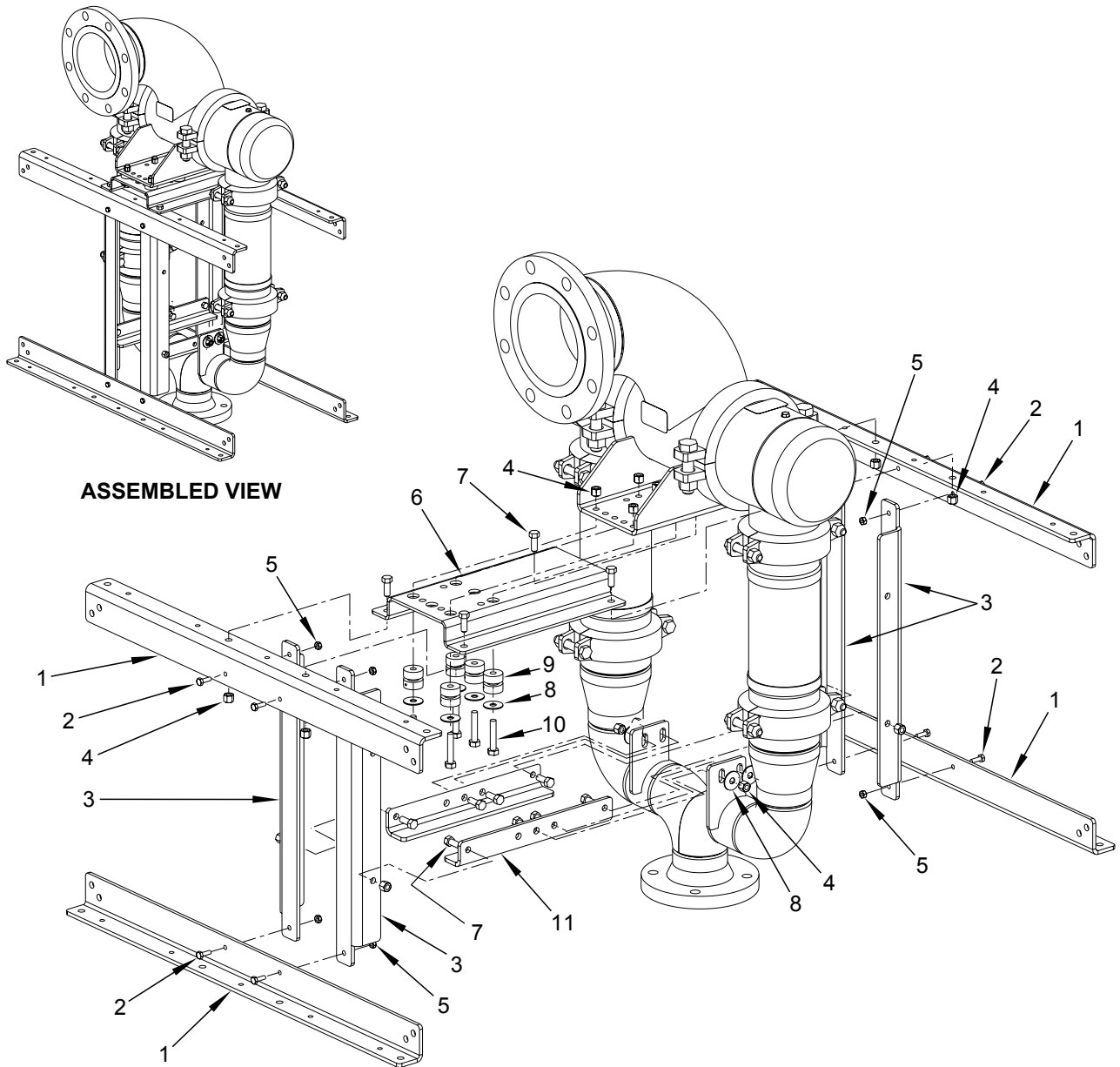
NOTE:

The Remote VRTX Unit has no serviceable components.

No spare parts are required for this unit.

Illustrations and parts listings are provided for reference purposes only.

3.2 SUPPORT FRAME ASSEMBLY, PART 1



ITEM	PART NO.	DESCRIPTION	QUANTITY
1	30-9352	Member, Horizontal, 2 X 2	4
2	04-1461	Screw, 1/4 - 20 X 0.750	8
3	30-9366	Support, Vertical	4
4	04-1272	Nut, Lock, 3/8 - 16	17
5	04-1205	Nut, Lock, 1/4 - 20	8
6	30-9353	Bracket, Bridge	1
7	04-1258	Screw, 3/8 - 16 X 1.000	12
8	04-1343	Washer, Fender, 1.250 x 0.406	5
9	50-0384	Isolator, Sound	5
10	04-1342	Screw, 3/8 - 16 x 2.000	5
11	30-9367	Support, Bridge	4

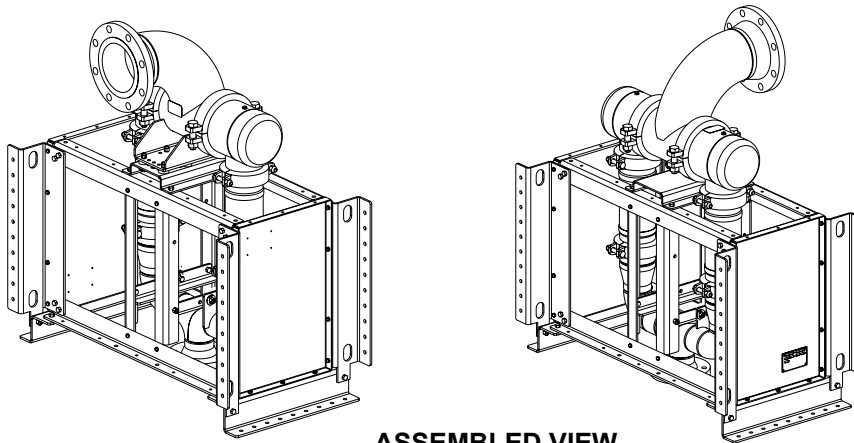
NOTE:

The Remote VRTX Unit has no serviceable components.

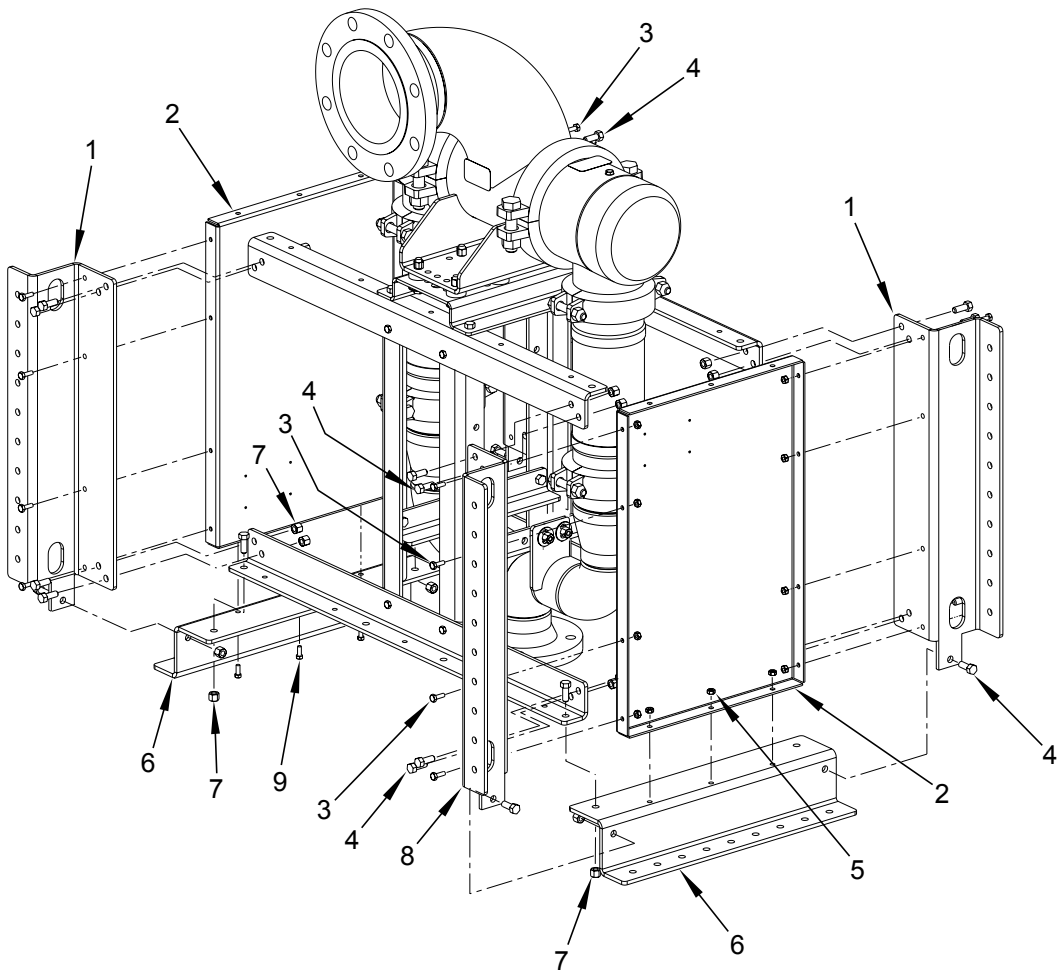
No spare parts are required for this unit.

Illustrations and parts listings are provided for reference purposes only.

3.3 SUPPORT FRAME ASSEMBLY, PART 2



ASSEMBLED VIEW



ITEM	PART NO.	DESCRIPTION	QUANTITY
1	30-9357	Rail, Vertical, Right	2
2	30-9349	Cover, Side/Bottom	2
3	04-1461	Screw, 1/4 - 20 X 0.750	22
4	04-1258	Screw, 3/8 - 16 X 1.000	24
5	04-1205	Nut, Lock, 1/4 - 20	22
6	30-9348	Rail, Bottom	2
7	04-1272	Nut, Lock, 3/8 - 16	20
8	30-9365	Rail, Vertical Left	2

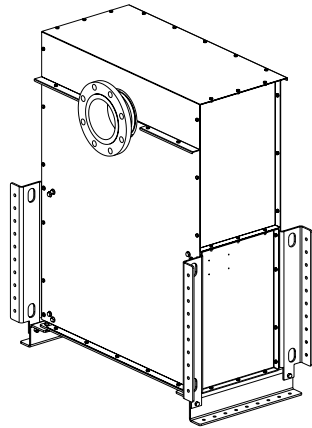
NOTE:

The Remote VRTX Unit has no serviceable components.

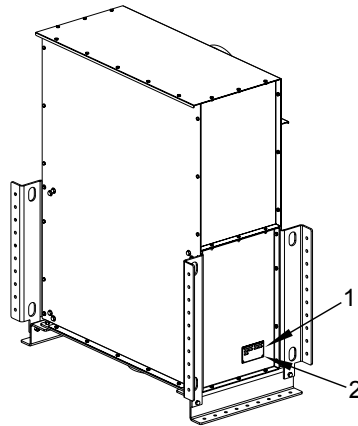
No spare parts are required for this unit.

Illustrations and parts listings are provided for reference purposes only.

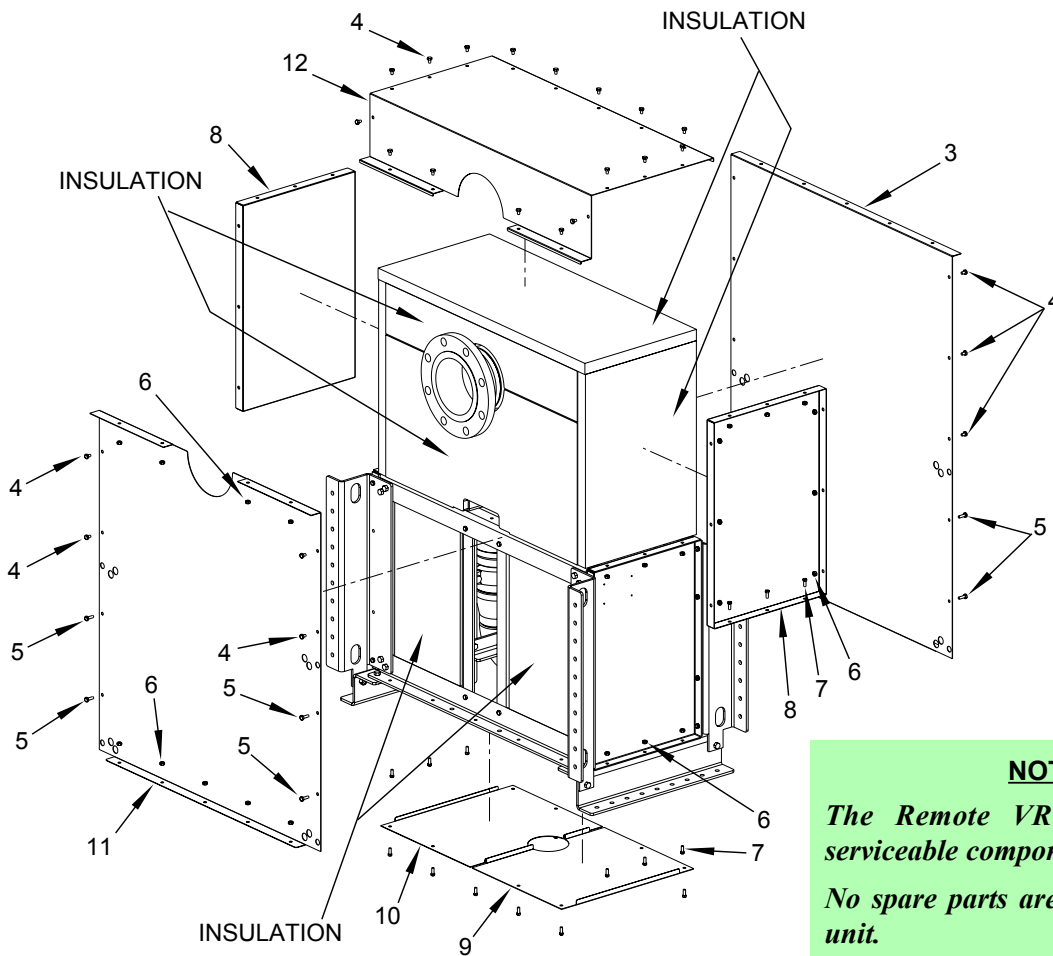
3.4 INSULATION, INTERIOR AND EXTERIOR PANELS



ASSEMBLED VIEW, FRONT



ASSEMBLED VIEW, BACK



NOTE:

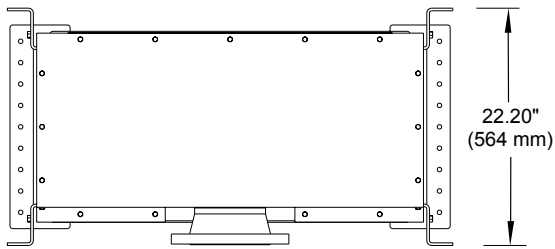
The Remote VRTX Unit has no serviceable components.

No spare parts are required for this unit.

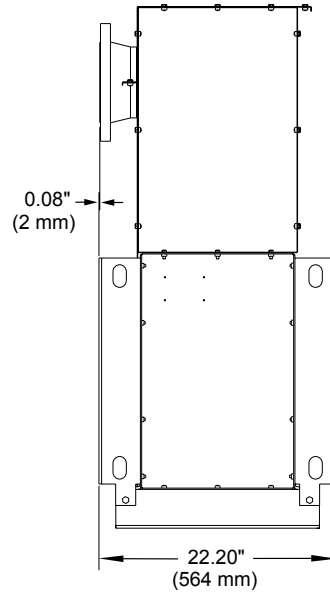
Illustrations and parts listings are provided for reference purposes only.

ITEM	PART NO.	DESCRIPTION	QTY	ITEM	PART NO.	DESCRIPTION	QTY
1	06-2894	Nameplate, VRTX	1	7	04-1357	Screw, 1/4 - 20 x 0.625	22
2	04-0072	Rivet, 0.125 X 0.312	4	8	30-9350	Cover, Side/Top	2
3	30-9364	Cover, Rear	1	9	30-9356	Cover, Bottom/Left	1
4	04-1460	Screw, 1/4 - 20 X 0.375	27	10	30-9355	Cover, Bottom/Right	1
5	04-1461	Screw, 1/4 - 20 X 0.750	16	11	30-9351	Cover, Front	1
6	04-1205	Nut, Lock, 1/4 - 20	57	12	30-9370	Cover, Top	11

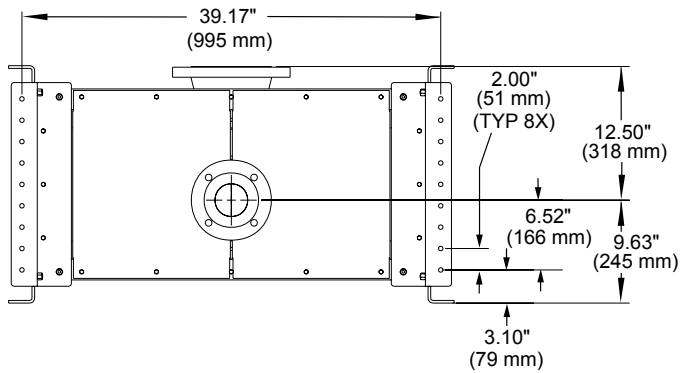
3.5 VIEWS



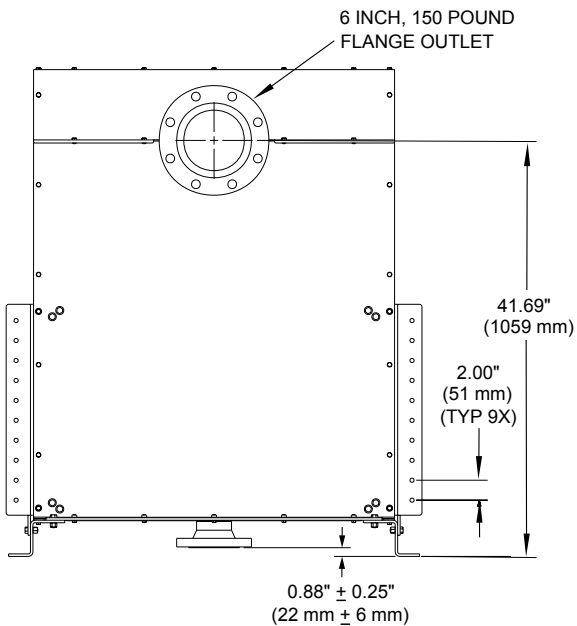
TOP VIEW



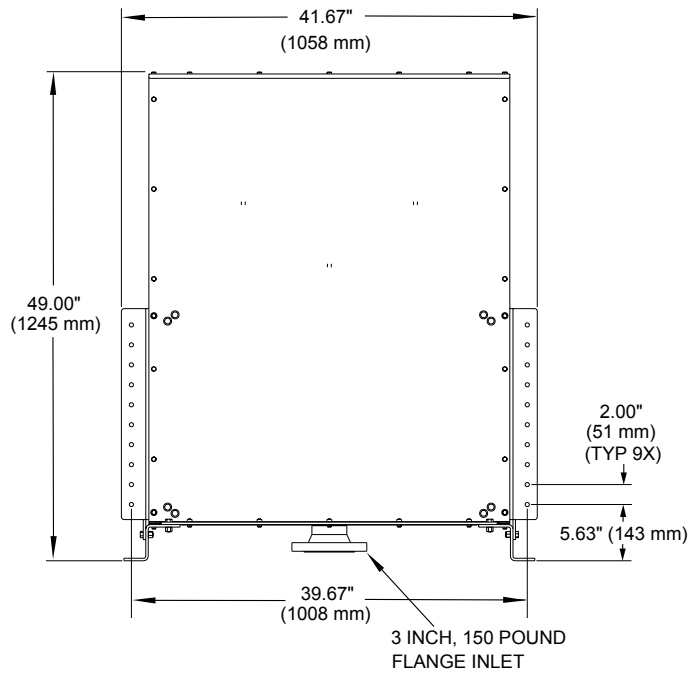
SIDE VIEW



BOTTOM VIEW



FRONT VIEW



REAR VIEW



For further Information:
e-mail: vrta@vrtxttech.com
Or see our Web Site
www.vrtx-technologies.com