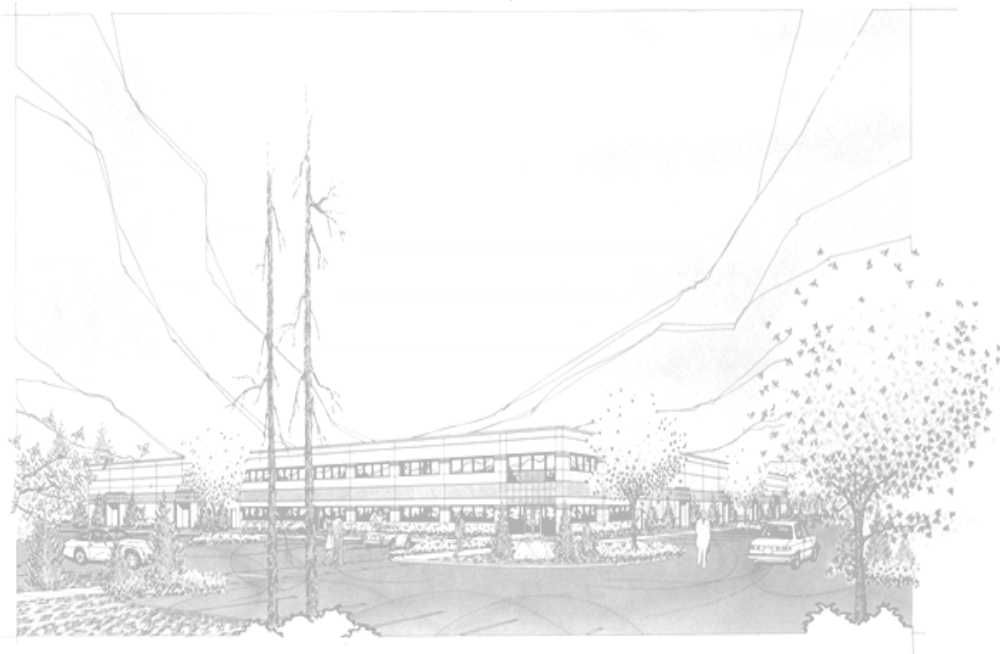


Installation, Operation, Maintenance, & Troubleshooting

Model: XLH12, Electric Clamshell®



THE INFORMATION IN THIS MANUAL IS CRUCIAL AND MUST BE RETAINED FOR FUTURE REFERENCE. READ, UNDERSTAND AND FOLLOW THE INSTRUCTIONS AND WARNINGS CONTAINED IN THIS MANUAL.

DANGER

POTENTIALLY HAZARDOUS SITUATION WHICH, IF NOT AVOIDED, COULD RESULT IN DEATH.



WARNING

POTENTIALLY HAZARDOUS SITUATION WHICH, IF NOT AVOIDED, COULD RESULT IN DEATH OR SERIOUS INJURY.



CAUTION

POTENTIALLY HAZARDOUS SITUATION WHICH, IF NOT AVOIDED, MAY RESULT IN MINOR OR MODERATE INJURY.



NOTICE

Helpful operation and installation instructions and tips are present.



FOR YOUR SAFETY















DO NOT STORE OR USE GASOLINE OR OTHER FLAMMABLE VAPORS AND LIQUIDS IN THE VICINITY OF THIS OR ANY OTHER APPLIANCE.

WARNING: IMPROPER INSTALLATION, ADJUSTMENT, ALTERATION, SERVICE OR MAINTENANCE CAN CAUSE PROPERTY DAMAGE, INJURY OR DEATH. READ THE INSTALLATION, OPERATING AND MAINTENANCE INSTRUCTIONS THOROUGHLY BEFORE INSTALLING OR SERVICING THIS EQUIPMENT.

Model #:	Purchased From:
Serial #:	Location:
Date Purchased:	Date Installed:
Purchase Order #:	For Service, Call:

TABLE OF CONTENTS

CHAPTER	PAGE
TABLE OF CONTENTS	3
READ FIRST	4
SAFETY PROCEDURES	6
EQUIPMENT DESCRIPTION	7
UNPACKING	8
INSTALLATION	9
INITIAL START UP	10
OPERATION	10
MAINTENANCE & CLEANING	11
TROUBLE SHOOTING	13
ILLUSTRATED PARTS BREAKDOWN	14
PARTS LIST	15
WIRING DIAGRAM	16
WARRANTY	17

<u>CAUTION</u>	THE UNIT IS EXTREMELY HEAVY. FOR SAFE HANDLING, INSTALLER SHOULD OBTAIN HELP AS NEEDED, OR EMPLOY APPROPRIATE MATERIALS HANDLING EQUIPMENT (SUCH AS A FORKLIFT, DOLLY, OR PALLET JACK) TO REMOVE THE UNIT FROM THE SKID AND MOVE IT TO THE PLACE OF INSTALLATION.	
<u>CAUTION</u>	ANY STAND, COUNTER OR OTHER DEVICE ON WHICH UNIT WILL BE LOCATED MUST BE DESIGNED TO SUPPORT THE WEIGHT OF THE UNIT.	
<u>CAUTION</u>	SHIPPING STRAPS ARE UNDER TENSION AND CAN SNAP BACK WHEN CUT.	
<u>DANGER</u>	THIS APPLIANCE MUST BE GROUNDED AT THE TERMINAL PROVIDED. FAILURE TO GROUND THE APPLIANCE COULD RESULT IN ELECTROCUTION AND DEATH.	
<u>WARNING</u>	INSTALLATION OF THE UNIT MUST BE DONE BY PERSONNEL QUALIFIED TO WORK WITH ELECTRICITY AND PLUMBING. IMPROPER INSTALLATION CAN CAUSE INJURY TO PERSONNEL AND/OR DAMAGE TO EQUIPMENT. UNIT MUST BE INSTALLED IN ACCORDANCE WITH ALL APPLICABLE CODES.	
<u>WARNING</u>	BROILER ELEMENTS CAN IGNITE GREASE FIRES ON THE GRIDDLE SURFACE WHICH MAY RESULT IN PROPERTY DAMAGE, SERIOUS INJURY OR DEATH. ENSURE GRIDDLE SURFACE IS SLOPPED DOWN FROM BACK TO FRONT BY AT LEAST ¼" BEFORE COOKING	
<u>NOTICE</u>	The data plate is located behind hood wrap on hood frame. The hood voltage, wattage, serial number, wire size, and clearance specifications are on the data plate. This information should be carefully read and understood before proceeding with the installation.	
<u>NOTICE</u>	The installation of any components such as a vent hood, grease extractors, fire extinguisher systems, must conform to their applicable National, State and locally recognized installation standards.	
<u>NOTICE</u>	During the first few hours of operation you may notice a small amount of smoke coming from the unit, and a faint odor from the smoke. This is normal for a new unit and will disappear after the first few hours of use.	
<u>CAUTION</u>	ALWAYS KEEP THE AREA NEAR THE APPLIANCE FREE FROM COMBUSTIBLE MATERIALS.	
<u>CAUTION</u>	KEEP FLOOR IN FRONT OF EQUIPMENT CLEAN AND DRY. IF SPILLS OCCUR, CLEAN IMMEDIATELY, TO AVOID THE DANGER OF SLIPS OR FALLS.	
<u>WARNING</u>	KEEP WATER AND SOLUTIONS OUT OF CONTROLS. NEVER SPRAY OR HOSE CONTROL CONSOLE, ELECTRICAL CONNECTIONS, ETC.	
<u>CAUTION</u>	MOST CLEANERS ARE HARMFUL TO THE SKIN, EYES, MUCOUS MEMBRANES AND CLOTHING. PRECAUTIONS SHOULD BE TAKEN TO WEAR RUBBER GLOVES, GOGGLES OR FACE SHIELD AND PROTECTIVE CLOTHING. CAREFULLY READ THE WARNING AND FOLLOW THE DIRECTIONS ON THE LABEL OF THE CLEANER TO BE USED.	
<u>NOTICE</u>	The plunger switch plunger should be compressed approximately 1/8" with the hood in the up position.	

NOTICE

Service on this, or any other, LANG appliance must be performed by qualified personnel only. Consult your authorized service station directory or call the factory at 1-800-224-LANG (5264), or WWW.LANGWORLD.COM For the service station nearest you.

**WARNING**

HIGH VOLTAGES ARE PRESENT INSIDE THIS APPLIANCE WHEN THE UNIT IS PLUGGED/WIRED INTO A LIVE RECEPTACLE. BEFORE REPLACING ANY PARTS, DISCONNECT THE UNIT FROM THE ELECTRIC POWER SUPPLY.

**CAUTION**

USE OF ANY REPLACEMENT PARTS OTHER THAN THOSE SUPPLIED BY LANG OR THEIR AUTHORIZED DISTRIBUTORS CAN CAUSE BODILY INJURY TO THE OPERATOR AND DAMAGE TO THE EQUIPMENT AND WILL VOID ALL WARRANTIES.



SAFETY PROCEDURES

Lockout Procedure

1. Announce lockout to other personnel.
2. Turn power off at main panel.
3. Test lockout by turning power switch on and observing if elements come on. Check heater circuit with voltmeter.
4. Perform necessary repairs or tests.
5. Clear unit of personnel before restarting.
6. Turn power on at main panel.
7. Announce unit is “ON” to other personnel.

Safety Precautions

The Manufacturer, Lang Manufacturing, hereby disclaims any and all responsibility for injury, damage, loss or other claim that may occur to person or property from improper alteration, modification, addition, operation, maintenance or service, whether it be mechanical, electrical, or otherwise, which may occur from such improper alteration, modification, addition, operation, maintenance or service to this piece of equipment.

Safety Considerations

Your Lang 12-inch Clamshell® is manufactured to rigid standards. This equipment is ETL, CETL, or NSF listed meeting safety and sanitation standards.

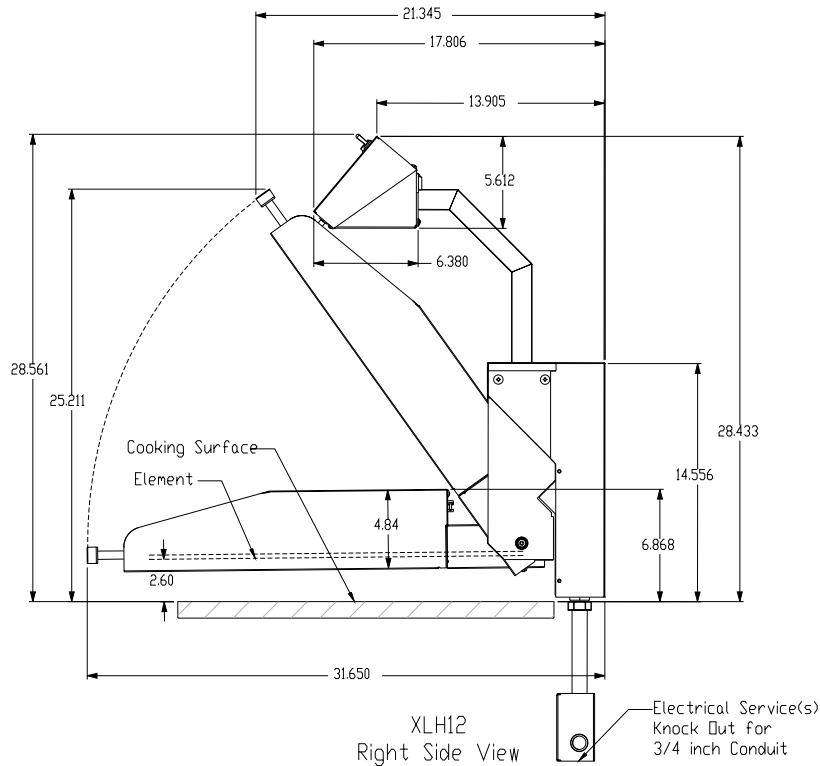
The presence of safety equipment control and interlocks on an appliance and attendant components of installation cannot in and of themselves, assure absolute safety of operation. Diligent, capable, well trained operators and maintenance personnel, as well as proper programs of operation and maintenance, are essential to the safe and reliable operation of this appliance.

- A. The **responsibility of the manufacturer** is to supply suitable, comprehensive instructions and recommendations for the operation and maintenance of the appliance.
- B. Trained qualified and factory-authorized personnel must perform all operation, maintenance and repair of these appliances. It is the **responsibility of the owner / operator** to ensure that this happens.
- C. A regular periodic program of cleaning, inspection and maintenance must be established and comprehensive maintenance records maintained. It is the **sole responsibility of the user** to establish, schedule and enforce the frequency and scope of these programs in keeping with recommended practice and with due consideration given to actual operating conditions.
- D. The appliance must be operated within the limits it was designed for, which will not exceed the working limits of any component within the appliance as a whole.

EQUIPMENT DESCRIPTION

Lang Model: XLH12 12-Inch Electric Clamshell

Exterior



The Clamshell® is 11" Wide.

The Clamshell® hood is constructed of stainless steel.

Controls

The XLH12 Broiler has a power switch located on the right of the pylon mounted control panel. A white indicator light adjacent to the power switch indicates power when power is on. A plunger switch mounted at the center of the control panel, actuated by placing the hood in the up "idle" position, switches between full and idle power settings. An optional green indicator light indicates when full "cooking" power is set. An optional standby circuit, consisting of a momentary contact switch and an amber indicator light, allows element power to be reduced to idle when the hood is in the down "cooking" position.

Technical

The broiler, not including the griddle, is standard 208 or 240-volt, single phase. The voltage must be specified when ordering.

Receiving the Unit

Upon receipt, check for freight damage, both visible and concealed. Visible damage should be noted on the freight bill at the time of delivery and signed by the carrier's agent. Concealed loss or damage means loss or damage, which does not become apparent until the merchandise has been unpacked. If concealed loss or damage is discovered upon unpacking, make a written request for inspection by the carrier's agent within 15 days of delivery. All packing material should be kept for inspection. Do not return damaged merchandise to Lang Manufacturing Company. File your claim with the carrier.

Location

Prior to un-crating, move the unit as near its intended location as practical. The crating will help protect the unit from the physical damage normally associated with moving it through hallways and doorways.

Un-crating






The unit will arrive completely assembled inside a wood frame covered by cardboard box and strapped to a skid. **Remove the cardboard cover, cut the straps and remove the wood frame.**

<u>CAUTION</u>	THE UNIT IS EXTREMELY HEAVY. FOR SAFE HANDLING, INSTALLER SHOULD OBTAIN HELP AS NEEDED, OR EMPLOY APPROPRIATE MATERIALS HANDLING EQUIPMENT (SUCH AS A FORKLIFT, DOLLY, OR PALLET JACK) TO REMOVE THE UNIT FROM THE SKID AND MOVE IT TO THE PLACE OF INSTALLATION.
<u>CAUTION</u>	ANY STAND, COUNTER OR OTHER DEVICE ON WHICH THE UNIT WILL BE LOCATED MUST BE DESIGNED TO SUPPORT THE WEIGHT OF THE UNIT.
<u>CAUTION</u>	SHIPPING STRAPS ARE UNDER TENSION AND CAN SNAP BACK WHEN CUT.



The unit may now be removed from the skid.

INSTALLATION

<u>DANGER</u>	THIS APPLIANCE MUST BE GROUNDED AT THE TERMINAL PROVIDED. FAILURE TO GROUND THE APPLIANCE COULD RESULT IN ELECTROCUTION AND DEATH.	
<u>WARNING</u>	INSTALLATION OF THE UNIT MUST BE DONE BY PERSONNEL QUALIFIED TO WORK WITH ELECTRICITY AND PLUMBING. IMPROPER INSTALLATION CAN CAUSE INJURY TO PERSONNEL AND/OR DAMAGE TO EQUIPMENT. UNIT MUST BE INSTALLED IN ACCORDANCE WITH ALL APPLICABLE CODES.	
<u>WARNING</u>	BROILER ELEMENTS CAN IGNITE GREASE FIRES ON THE GRIDDLE SURFACE WHICH MAY RESULT IN PROPERTY DAMAGE, SERIOUS INJURY OR DEATH. ENSURE GRIDDLE SURFACE IS SLOPPED DOWN FROM BACK TO FRONT BY AT LEAST ¼" BEFORE COOKING	
<u>NOTICE</u>	The data plate is located behind hood wrap on hood frame. The unit voltage, wattage, serial number, wire size, and clearance specifications are on the data plate. This information should be carefully read and understood before proceeding with the installation.	
<u>NOTICE</u>	The installation of any components such as a vent hood, grease extractors, fire extinguisher systems, must conform to their applicable National, State and locally recognized installation standards.	

ELECTRICAL CONNECTION

Ensure griddle is installed per griddle installation instructions.

If installation is a retrofit, locate and drill mounting holes in griddle splasher.

Mount hood with hardware provided.

Electrical service connection is made in the box mounted at the back of the griddle.

MODEL: XLH12	VOLTS	KW PER PHASE				AMPS PER LINE THREE PHASE			SINGLE PHASE
		L1-L2	L2-L3	L1-L3	TOTAL	L1	L2	L3	
1 EA.	208V	3.8			3.8	18.3	18.3	0.0	18.3
1 EA.	240V	3.8			3.8	15.8	15.8	0.0	15.8
2 EA.	208V	3.8	3.8		7.6	18.3	31.7	18.3	36.5
2 EA.	240V	3.8	3.8		7.6	15.8	27.4	15.8	31.7
3 EA.	208V	3.8	3.8	3.8	11.4	31.7	31.7	31.7	---
3 EA.	240V	3.8	3.8	3.8	11.4	27.4	27.4	27.4	---

CLEARANCES

Maintain clearances of base appliance. For use only in non-combustible locations.

INITIAL START UP

NOTICE

During the first few hours of operation you may notice a small amount of smoke coming from the appliance, and a faint odor from the smoke. This is normal for a new oven and will disappear after the first few hours of use.



Each unit is preheated, tested and calibrated at the factory before shipment. However, due to temperature and climate changes during shipment the unit can absorb moisture and should be dried out before attempting to put it in full operation.

Prior to putting any unit into full time operation at normal cooking temperatures, it must be thoroughly "seasoned" or dried out. Moisture absorption in the closed spaces, in the insulation and even inside the heating elements can cause future trouble if not properly treated.

Before the initial use of the unit, the element must be thoroughly allowed to dry out. This can be done by cycling the unit on and placing the hood into the down position. Allow the unit to saturate until all vapor and condensation has been eliminated. For best operating results allow the unit to thoroughly dry out for 8 to 12 hours.

If the unit is out of use for three or more days, a one-hour preheat schedule should be used, especially when exposed to high humidity and/or cool temperatures.

OPERATION

CAUTION

ALWAYS KEEP THE AREA NEAR THE APPLIANCE FREE FROM COMBUSTIBLE MATERIALS.



CAUTION

KEEP FLOOR IN FRONT OF EQUIPMENT CLEAN AND DRY. IF SPILLS OCCUR, CLEAN IMMEDIATELY, TO AVOID THE DANGER OF SLIPS OR FALLS.



GENERAL

Once the griddle has been loaded properly lower the hood over the product.

MAINTENANCE & CLEANING

<u>WARNING</u>	KEEP WATER AND SOLUTIONS OUT OF CONTROLS. NEVER SPRAY OR HOSE CONTROL CONSOLE, ELECTRICAL CONNECTIONS, ETC.
<u>CAUTION</u>	MOST CLEANERS ARE HARMFUL TO THE SKIN, EYES, MUCOUS MEMBRANES AND CLOTHING. PRECAUTIONS SHOULD BE TAKEN TO WEAR RUBBER GLOVES, GOGGLES OR FACE SHIELD AND PROTECTIVE CLOTHING. CAREFULLY READ THE WARNING AND FOLLOW THE DIRECTIONS ON THE LABEL OF THE CLEANER TO BE USED.



DAILY CLEANING

The XLH12 hood is a self-cleaning device. When the hood is in the down position it will bake off any debris that may accumulate during normal business operation.

Do not use any water or cleaning solution on the elements.

Clean the exterior of the appliance with Lang Mfg. Prima Shine (72804-41) to maintain a gleaming appearance.

Wipe drip shield between hood and griddle to remove any grease.

WEEKLY CLEANING

It may be necessary after high use to allow the hood to burn off any carbon build up.

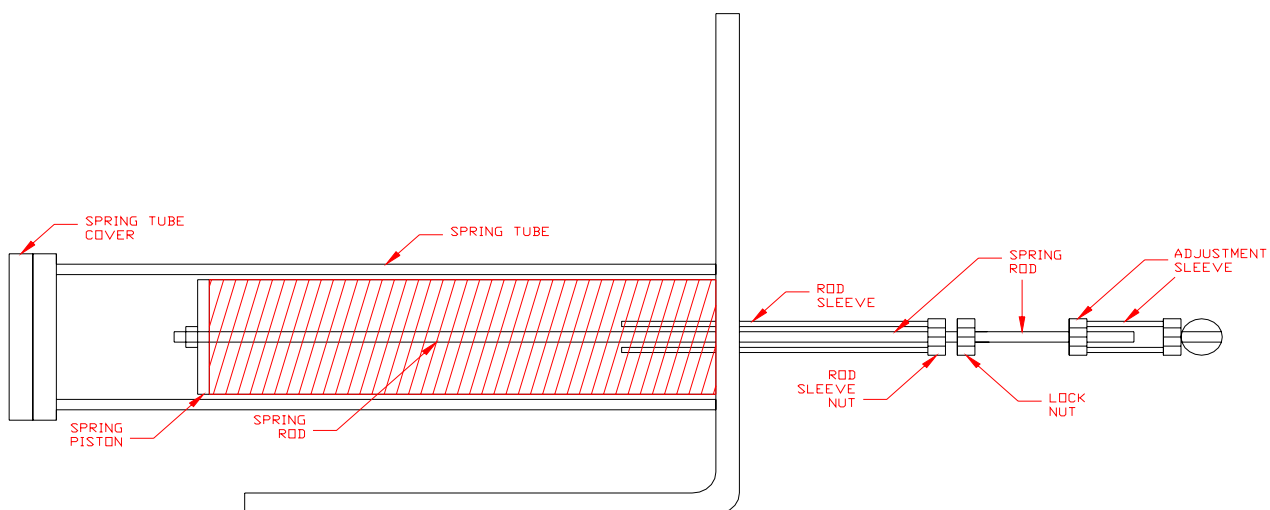
With a cold griddle, lower the hood and allow the hood to cook for 30 minutes.

Additional time may be necessary for more baked-on grease.

CHANGING THE ELEMENTS

1. Disconnect unit from power.
2. Remove 4 screws securing element mount at the front of the unit.
3. Lower the front end of the element assembly and pull back end of element clear from the rear keeper.
4. Mark and disconnect wires to element(s) that will be replaced.
5. Remove 4 screws securing element(s) to element mount and remove element(s).
6. To re-install elements reverse removal instructions.

SPRING ASSEMBLY



ADJUSTING THE SPRING & DOWN STOP

(See spring illustration above.)

1. With the hood in the down position, unlock the rod sleeve nut (the nut that is closest to the front of the appliance) from the lock nut by turning it counterclockwise with a 7/16 wrench, toward the front of the appliance about 1”.
2. Unlock the locknut (the nut in the center) from the adjustment sleeve nut (the nut closest to the back of the appliance) and lock it against the rod sleeve nut by turning it counterclockwise toward the front of the appliance.
3. If decreasing the spring rod tension (right hand rod), or lowering the hood down position (left hand rod), place the 7/16 wrench on the lock nut and turn the lock nut counter clockwise against the rod sleeve nut toward the front of the appliance until desired tension or height is reached.
4. If increasing the spring rod tension (right hand rod), or raising the hood down position (left hand rod), place the 7/16 wrench on the rod sleeve nut and turn the rod sleeve nut clockwise against the locknut toward the back of the appliance until desired tension or height is reached.
5. Once desired tension or height has been achieved unlock the locknut from the rod sleeve nut by turning it clockwise toward the adjustment sleeve nut.
6. Lock the locknut against the adjustment sleeve nut.
7. Lock the rod sleeve nut against the locknut by turning it clockwise toward the locknut. Hand tighten.

CHANGING THE SPRING

(See spring illustration above)

1. Secure unit from power.
2. Remove the 4 screws securing hood wrap (2 at back of hood wrap and 2 inner screws at the front). Remove hood wrap.
3. Remove the spring tube-cover and replace it with the spring rod removal tool (XLH-738).
4. Turn the spring removal bolt clockwise until it becomes tight (bolt should now be holding spring tension) turn bolt one more turn.
5. Unlock the rod sleeve nut (the nut that is closest to the front of the appliance) from the lock nut. Turn the rod sleeve nut counterclockwise ½ turn.
6. Unlock the locknut (the nut that is in the center) from the adjustment sleeve nut (the nut that is closest to the rear of the appliance) by turning it counterclockwise. Lock it to the rod sleeve nut.
7. With the wrench on the locknut, Turn the spring rod, rod sleeve and lock nut assembly out of adjusting sleeve by turning it counterclockwise.
8. If spring rod assembly is replaced, note the distance from lock nut to end of the spring rod for re-assembly adjustment.
9. Turn the spring removal bolt out slowly until all tension has been released from the spring. The spring removal tool can now be removed.
10. Remove spring rod and spring.
11. Check that the distance from end of the spring rod to the lock nut and rod sleeve nut is approximately 1 5/8”. Lock the locknut to the rod sleeve nut.
12. Position new spring over spring rod assembly.
13. Lubricate outer surface of spring and spring piston with high temperature grease.
14. Insert spring assembly into spring tube.
15. Place the spring removal tool on the end of the tube and screw the removal bolt clockwise, compressing the spring so that the spring rod can be started into the adjustment sleeve nut.
16. With the wrench on the rod sleeve nut, turn the rod sleeve nut clockwise into the adjusting sleeve nut until the locknut is 1/16” to the adjustment sleeve.
17. Remove the spring removal tool from the tube and replace it with the tube cover.
18. Install the hood wrap and check the adjustment of the spring rod. Adjust where necessary (see Adjusting the Springs).

NOTICE

The plunger switch plunger should be compressed approximately 1/8” with the hood in the up position.



Symptoms

What follows is a chart of Symptoms, Possible Causes, and Remedy's to aid in diagnosing faults with the oven.

Refer to the Symptoms column to locate the type of failure then to the Possible Cause for the items to be checked. On the following pages is a chart with the possible causes and the test to properly identify the problem.

SYMPTOM	POSSIBLE CAUSE
Unit will not heat	<ul style="list-style-type: none"> No power to Unit Defective power switch Defective micro switch Defective element
Unit will not stay up	<ul style="list-style-type: none"> Spring needs to be adjusted Spring needs to be replaced

NOTICE

Service on this, or any other, LANG appliance must be performed by qualified personnel only. Consult your authorized service station directory or call the factory at 1-800-224-LANG (5264), or WWW.LANGWORLD.COM For the service station nearest you.

WARNING

BOTH HIGH AND LOW VOLTAGES ARE PRESENT INSIDE THIS APPLIANCE WHEN THE UNIT IS PLUGGED/WIRED INTO A LIVE RECEPTACLE. BEFORE REPLACING ANY PARTS, DISCONNECT THE UNIT FROM THE ELECTRIC POWER SUPPLY.

CAUTION

USE OF ANY REPLACEMENT PARTS OTHER THAN THOSE SUPPLIED BY LANG OR THEIR AUTHORIZED DISTRIBUTORS CAN CAUSE BODILY INJURY TO THE OPERATOR AND DAMAGE TO THE EQUIPMENT AND WILL VOID ALL WARRANTIES.

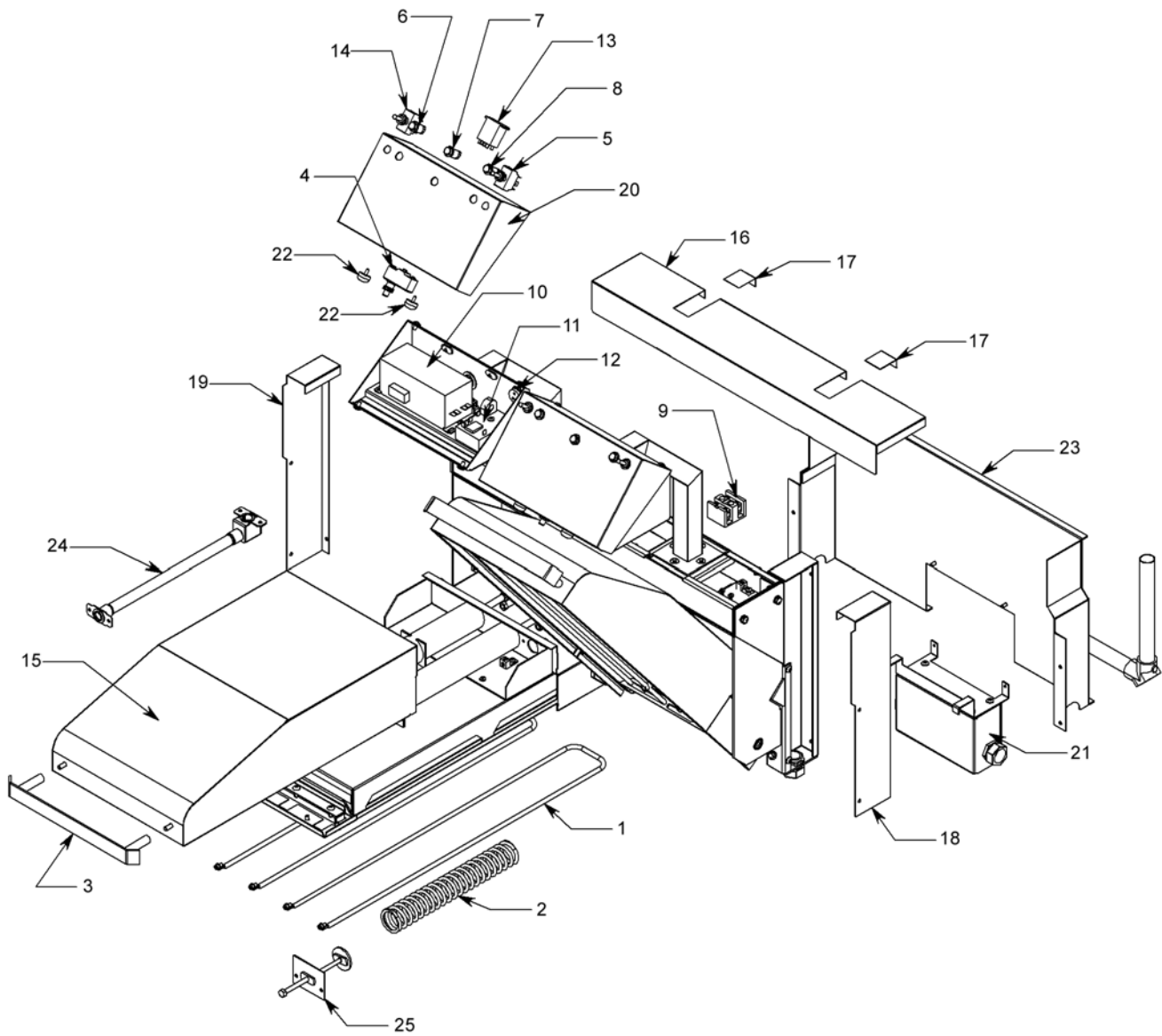


TESTS

Possible Cause	TEST
No Power to unit	<ul style="list-style-type: none"> Confirm that circuit breakers are on. Check for voltage at the terminal block. *
Defective power switch	<ul style="list-style-type: none"> Check toggle switch for normal operation.
Defective plunger switch	<ul style="list-style-type: none"> Check plunger switch for normal operation
Failed element	<ul style="list-style-type: none"> Remove the wires and check for continuity across the element*

* A factory authorized service representative should perform this work.

ILLUSTRATED PARTS BREAKDOWN

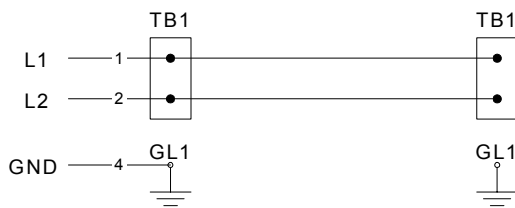


XLH12H
ELECTRIC 12-INCH CLAMSHELL

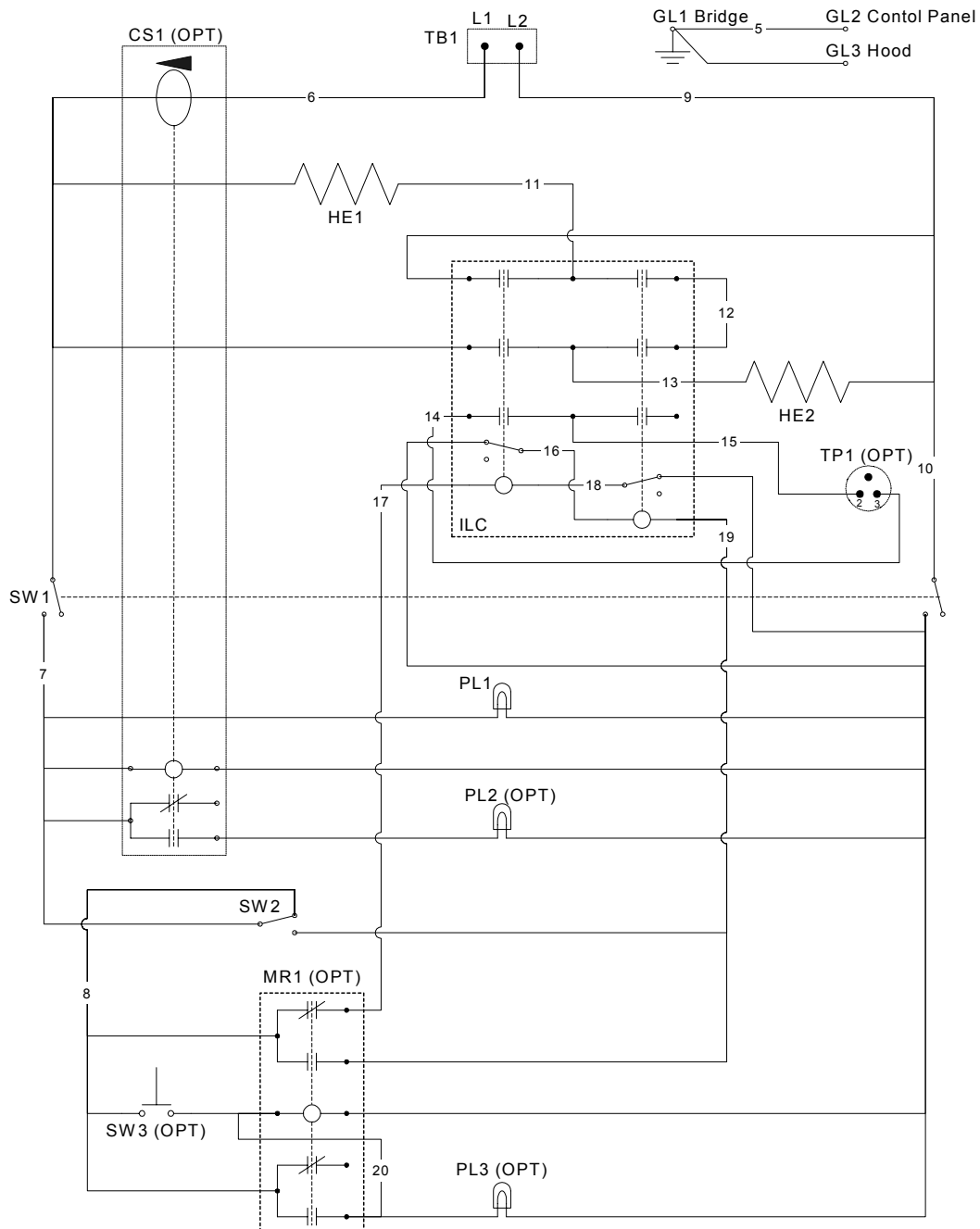
ITEM	DESCRIPTION	PART NO.
1	Element, 208 Volt	11160-32
1A	Element, 240 Volt	11160-33
2	Spring, Hood	51002-12
3	Handle Assembly	XLH-709
4	Micro Switch, Plunger	30301-11
5	Toggle Switch, DPDT	30303-06
6	Indicator Lamp (Amber)	31601-15
7	Indicator Lamp (Green)	31601-16
8	Indicator Lamp (White)	31601-17
9	Terminal Block, 2 Pole	30500-08
10	Interlocking Contactor,	30705-01
11	Current Sensor	41100-31
12	Timer Plug	40302-02
13	Relay, 240V, DPDT	30600-10
14	Momentary Switch	30303-16
15	Hood Wrap	XLH-609
16	Bridge Cover-2ft.	XLH-635-2
16A	Bridge Cover-3ft.	XLH-635-3
16B	Bridge Cover-4ft.	XLH-635-4
16C	Bridge Cover-5ft.	XLH-635-5
16D	Bridge Cover-6ft.	XLH-635-6
17	Bridge Cover Pylon	XLH-648
18	Stanchion Cover-R/H	XLH-659
19	Stanchion Cover-L/H	XLG-660
20	Control Panel Cover	XLH-640
21	Connection Box Assembly, -2ft, 3ft, & 4ft Gas Griddles	XLH-731
21A	Connection Box Assembly, -3ft, & 4ft Electric Griddles	XLH-731-1
21B	Connection Box Assembly, -2ft Electric Griddles	XLH-731-2
21C	Connection Box Assembly, -5ft & 6ft Gas Griddles	XLH-732
21D	Connection Box Assembly, -5ft & 6ft Electric Griddles	XLH-732-1
22	Bumper	70805-04
23	Griddle Flue Assembly, -2ft Gas Griddle	XLH-736-2
23A	Griddle Flue Assembly, -3ft Gas Griddle	XLH-736-3
23B	Griddle Flue Assembly, -4ft Gas Griddle	XLH-736-4
23C	Griddle Flue Assembly, -5ft Gas Griddle	XLH-736-5
23D	Griddle Flue Assembly, -6ft Gas Griddle	XLH-736-6
24	Bridge to Hood Wire Conduit	XLH-734
25	Spring Removal Tool	XLH-738

WIRING DIAGRAM

Single-Phase Bridge



SYMBOL	DESCRIPTION	SYMBOL	DESCRIPTION
CS1	Current Sensor	PL1	Indicator Light, White
GL1	Ground Lug, Bridge	PL2	Indicator Light, Green
GL2	Ground Lug, Control Panel	PL3	Indicator Light, Yellow
GL3	Ground Lug, Hood	SW1	Toggle Switch
HE1	Heating Element	SW2	Plunger Switch
HE2	Heating Element	TB1	Terminal Block
ILC	Interlocking Contactor	TB2	Timer Plug
MR1	Mechanical Relay		



Lang Manufacturing Limited Warranty to Commercial Purchasers* (Contiguous U.S. Including Hawaii, Alaska & **Canada.)

Lang Manufacturing Equipment ("Lang Equipment") has been skillfully manufactured, carefully inspected and packaged to meet rigid standards of excellence. Lang warrants its Equipment to be free from defects in material and workmanship for (12) twelve consecutive months, with the following conditions and subject to the following limitations.

I. This parts and labor warranty is limited to Lang Equipment sold to the original commercial purchaser/users (but not original equipment manufacturers), at its original place of installation, in the continental United States, Hawaii and Canada.

Quartz elements are warranted for ninety (90) days from the date of installation.

II. Damage during shipment is to be reported to the carrier, is not covered under this warranty, and is the sole responsibility of purchaser/user.

III. Lang, or an authorized service representative, will repair or replace, at Lang's sole election, and Lang Equipment, including but not limited to, safety valves, gas and electric components, found to be defective during the warranty period. As to warranty service in the territory described above, Lang will absorb labor and portal to portal transportation costs (time & mileage) for the first (12) twelve months from the date of installation or eighteen (18) months from date of shipment from Lang Manufacturing, whichever comes first.

IV. This warranty does not cover routine general maintenance, periodic adjustments, as specified in operating instructions or manuals, and consumable parts such as quartz elements, or labor costs incurred for removal of adjacent equipment or objects to gain access to Lang Equipment. This warranty does not cover defects caused by improper installation, abuse, careless operation, or improper maintenance of equipment.

V. THIS WARRANTY IS EXCLUSIVE AND IS IN LIEU OF ALL OTHER WARRANTIES, EXPRESSED OR IMPLIED, INCLUDING ANY IMPLIED WARRANTY OF MERCHANTABILITY OR FITNESS FOR A PARTICULAR PURPOSE, EACH OF WHICH IS HEREBY EXPRESSLY DISCLAIMED. THE REMEDIES DESCRIBED ABOVE ARE EXCLUSIVE AND IN NO EVENT SHALL LANG BE LIABLE FOR SPECIAL, CONSEQUENTIAL OR INCIDENTAL DAMAGES FOR THE BREACH OR DELAY IN PERFORMANCE OF THIS WARRANTY.

VI. Lang Equipment is for commercial use only. If sold as a component of another (OEM) manufacturer's equipment, or if used as a consumer product, such Equipment is sold AS IS and without any warranty.

***Canada warranty paid in US dollars based on current exchange rates.**