



## **Ice Machine Parts List for MDB-290 Series Dispenser Models**

**MDB-290**

**MDB-291**

**Manufactured August 1968 through May 1988**

**MDB-290  
UP TO SN 82015260**

<b>GEAR DRIVE GROUP</b>	<b>PART NO.</b>
1/3 H.P. Gear Drive Motor .....	24-0226-1
Sheave 5/8" Bore (Motor).....	37-0001-1
Sheave 3/8" Bore (Gear drive input) .....	37-0002-1
A Belt 27" Long.....	37-0018-1
Gear Train .....	No Longer Available
Fiber Gear .....	No Longer Available
Sprocket (Gear drive output) .....	37-0011-1
Sprocket (Lower bearing shaft).....	37-0010-1
Chain Link Steel No. 40 .....	37-0009-1
Connecting Link For Chain.....	37-0007-1
Lower Bearing Housing Assembly (With shaft) .....	15040-1
Upper Bearing Assembly .....	† 10992-1
Lower Shaft Bearing.....	37-1023-1
Pin Lower Bearing Shaft.....	37-1013-1
Housing Lower Seal.....	No Longer Available
Spacer - Acorn Bolt.....	37-1014-1
Bolt 3/16" - 16 Acorn Head.....	50-1307-1
Lower Seal (With seat).....	37-0501-1
Shaft - Upper Bearing.....	37-1012-1
Pin Upper Bearing Shaft.....	37-1011-1
<b>AUGER GROUP</b>	
Auger Assembly 4" Stainless Steel.....	No Longer Available
Ice Chute Assembly (For 4" auger) .....	No Longer Available
Ice Chute Hood (For 4" auger).....	No Longer Available
Cover Chute Hood (For 4" auger) .....	No Longer Available
Ice Chute Cover 4" (With water tube).....	No Longer Available
Auger Assembly (3").....	† 48-0004-1
Ice Chute Assembly (For 3" auger) .....	† 681971-4
Ice Chute Hood (For 3" auger) Without Water Tube.....	No Longer Available
Ice Chute Cover 3" (With water tube).....	No Longer Available
1/4-20 Wing Nut (Ice chute to frame) .....	No Longer Available
Wing Screw 8-32 x 3/8 (Hood to ice chute) .....	No Longer Available
Flat Washer #8 .....	† 55-0426-9
Wing Screw #8-32 x 3/8 (Cove4r to hood) .....	No Longer Available
Wing Nut #8-32 (For 3" ice chute) .....	† 54-8913-9
<b>CONTROL GROUP</b>	
Push Button Microswitch (Ice and water) .....	† 23-0106-3
Foot Tredle Ice Control.....	No Longer Available
Manual Water Dispenser Valve (Water trigger) .....	† 202-FN-1101
Product Lever Trigger (For 202-FN-1101) .....	No Longer Available
Valve Pallet (2 required) (For 202-FN-1101).....	No Longer Available
Valve Spring (For 202-FN-1101).....	13-8002-1
O-Ring 1/2" I.D. x 11/16 O.D. (2 required) (For 202-FN-1101).....	No Longer Available
O-Ring 1/8" I.D. x 1/4" O.D. (2 required) (For 202-FN-1101) .....	No Longer Available
Glass Trigger Assembly With Stainless Steel Panel.....	No Longer Available
Key Switch With Keys.....	No Longer Available
Key Only Master.....	30-6004-1
Ice Trigger, Stainless Steel .....	30148-1
Bushing, Rod on Ice Trigger (2 per) .....	No Longer Available
Ice Trigger Mounting Rod .....	44-0766-1
Ice Trigger Microswitch Starting SN AA0100 .....	07-0071-3
Water Regulator .....	No Longer Available
Solenoid Valve (Water).....	24-0405-1
Key Ice Kit (Convert push button to key ice operation) .....	No Longer Available
Microswitch Only For Key Ice.....	23-0060-1
Contactor (For push button microswitch) Replaced by Mercury Relay, 120V .....	† 76-2685-3
Contactor (For push button microswitch) Replaced by Mercury Relay, 230V .....	76-2193-3

† Refer to Cross Reference Guide

## MDB-290

<b>CABINET GROUP</b>	<b>PART NO.</b>
Front Panel (Painted) . . . . .	No Longer Available
Nameplate Holder . . . . .	No Longer Available
Manitowoc Nameplate . . . . .	No Longer Available
Back Panel (Painted) . . . . .	No Longer Available
Side Panel Right Hand (Painted) . . . . .	No Longer Available
Side Panel Left Hand (Painted) . . . . .	No Longer Available
Trim Frame Top . . . . .	No Longer Available
Foam Tape 9 Ft. (On trim frame top) . . . . .	† 92-0248-9
Trim Top Panel (For 2-push buttons) . . . . .	No Longer Available
Trim Top Panel (No holes) . . . . .	No Longer Available
Trim Top Panel (No ice button hole) . . . . .	No Longer Available
Trim Top Panel (No water button hole) . . . . .	No Longer Available
Trim Frame Cube Tray . . . . .	12605-1
Access Door Outer Panel . . . . .	No Longer Available
Trim Panel Top . . . . .	No Longer Available
Access Door Gasket . . . . .	† 92-0250-9
Access Door Bin Liner (Inner) . . . . .	12616-1
Wing Nut #8-32 (Mounting 12616-9 to liner) . . . . .	† 54-8913-9
Stainless Steel Front Panel . . . . .	681652-4
Stainless Steel Back Panel . . . . .	No Longer Available
Stainless Steel Side Panel Right Hand . . . . .	No Longer Available
Stainless Steel Side Panel Left Hand . . . . .	No Longer Available
Stainless Steel Trim Panel Top . . . . .	No Longer Available
Grill . . . . .	† 34-0605-1
Cube Deflector (Under grill) . . . . .	12603-1
Ice Decal . . . . .	† 81-3104-3
Water Decal . . . . .	81-0363-1
Ice Chute (Bucket filling) . . . . .	No Longer Available
Front & Rear Panel Brass Stud (Mounting panels to base) . . . . .	† 50-1308-9
Front & Rear Panel Washer (Mounting panels to base) . . . . .	† 55-4459-9
Front & Rear Panel Nut (Mounting panels to base) . . . . .	† 54-2906-9
Melting Tank . . . . .	No Longer Available
Key Lock Out Switch . . . . .	No Longer Available
Front Panel Mounting Stud Brass . . . . .	† 50-1308-9
Front Panel Mounting Stud Nut . . . . .	† 54-2906-9
Front Panel Mounting Stud Washer . . . . .	† 55-4459-9

† Refer to Cross Reference Guide

**MODEL MDB-291  
STARTING WITH SN 82015260**

<b>GEAR DRIVE &amp; AUGER GROUP</b>	<b>PART NO.</b>	<b>ILLUSTRATION</b>
1/3 H.P. Gear Drive Motor, 60 Hz . . . . .	24-0226-1	1
Sheave 1/2" Bore (Motor) . . . . .	37-0001-1	1
Sheave 3/8" Bore (Gear drive input) . . . . .	37-0002-1	2
A Belt . . . . .	37-0018-1	1
Gear Train . . . . .	No Longer Available	2
Fiber Gear (inside gear train)* . . . . .	No Longer Available	2
Sprocket (Gear train output) . . . . .	37-0011-1	2
Sprocket (Lower bearing shaft) . . . . .	37-0010-1	2
Chain Link Steel No. 40 . . . . .	37-0009-1	2
Connecting Link for Chain* . . . . .	37-0007-1	2
Upper Bearing Assembly . . . . .	† 10992-1	2
Upper Bearing . . . . .	37-1011-1	2
Upper Bearing Mounting Hex . . . . .	† 54-2953-9	2
Upper Bearing Mounting Screw . . . . .	† 50-3184-9	2
Lower Bearing Housing Assembly (With shaft) . . . . .	15040-1	2
Lower Shaft Before SN 851264271 Use . . . . .	37-1023-1	2
Lower Shaft After SN 851264271 Use . . . . .	37-1034-3	2
Pin Lower Bearing Shaft Before SN 851264271 . . . . .	37-1013-1	2
After SN 851264271 Use Pin . . . . .	37-1032-3	
After SN 851264271 Use Screw . . . . .	† 50-3236-9	
After SN 851264721 Use Washer . . . . .	† 55-4511-9	
Housing Lower Seal . . . . .	No Longer Available	2
Spacer Acorn Bolt (Mounting lower bearing housing) . . . . .	37-1014-1	2
Bolt 3/16" - 16 Acorn Head (Mounting lower bearing housing) . . . . .	50-1307-1	2
Lower Seal (With seat) . . . . .	37-0501-1	2
Bearings for Lower Bearing Assembly . . . . .	37-3003-1	2
Flat Bearing Washer (For lowering bearing assembly) . . . . .	† 55-7311-9	2
Lockwasher (Mounting lower bearing housing assembly) . . . . .	† 55-4514-9	2
Mounting Screw (Mounting lower bearing housing assembly) . . . . .	† 50-3765-9	2
Auger Assembly . . . . .	† 48-0004-1	2
Ice Chute Assembly (For auger) . . . . .	No Longer Available	2
1/4-20 Wing Nut (Ice chute to frame) . . . . .	54-8903-1	2
Wing Nut 3/8-32 (For ice chute) . . . . .	† 54-8913-9	1
Water Inlet Assembly . . . . .	613981-4	2
<b>CONTROL GROUP FOR TRIGGER ICE &amp; WATER</b>		
Manual Water Dispensing Valve (Water trigger) Without Cover . . . . .	† 202-FN-1101	1
Cover for Part No. 202-FN-1101 . . . . .	83-7602-3	1
Trigger Only (For manual water dispensing valve) . . . . .	No Longer Available	1
Manual Ice Trigger Assembly . . . . .	No Longer Available	1
Valve Pallet (2 required for 202-FN-1101)* . . . . .	No Longer Available	1
Valve Spring (For 13-7601 -9)* . . . . .	13-8002-1	1
O-Ring 1/2" I.D. x 11/16 O.D. (2 required for 202-FN-1101)* . . . . .	No Longer Available	1
O-Ring 1/8" I.D. x 1/4 O.D. (2 required for 202-FN-1101)* . . . . .	No Longer Available	1
Contactors - Mercury Relay, 120V* . . . . .	† 76-2192-3	1
Ice Trigger Microswitch . . . . .	No Longer Available	1
Ice Trigger Pivot Block with Activating Arm . . . . .	No Longer Available	1
Ice Trigger Pivot Pin . . . . .	† 37-1202-9	1
Wing Nut (Mounting Water Regulator) . . . . .	† 54-8913-9	1
Water Regulator . . . . .	No Longer Available	1

\*The components are part of, or within item and illustration given. Not necessarily shown.

## MDB-291

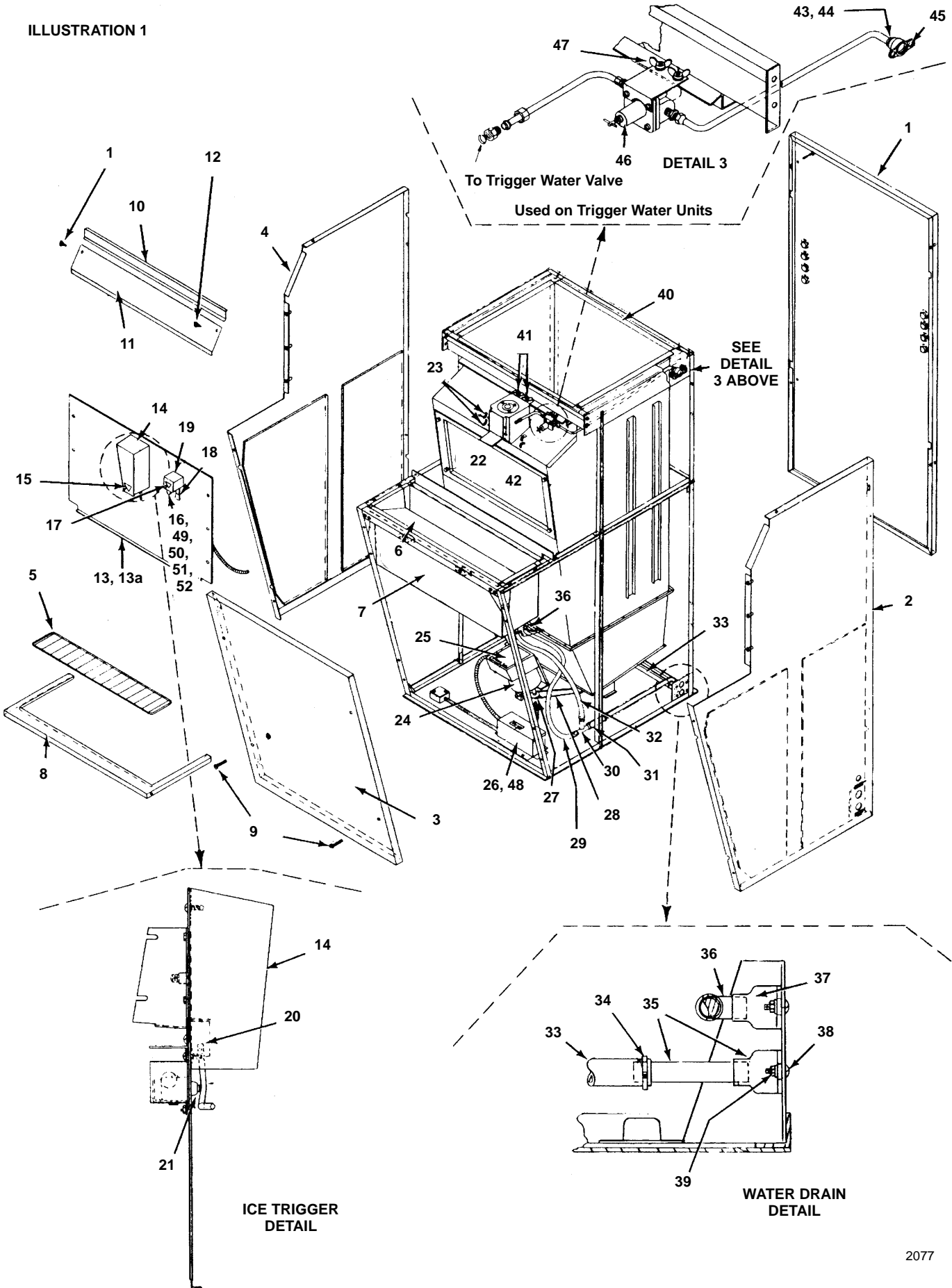
<b>CONTROL GROUP FOR PUSH BUTTON WATER</b>	<b>PART NO.</b>	<b>ILLUSTRATION</b>
Microswitch, (Push button type) . . . . .	23-0085-1	Not Shown
Manual Push Button Actuator & Bracket . . . . .	23-0086-1	Not Shown
Actuator Bracket . . . . .	Shipped with 23-0086-1	Not Shown
Water Label . . . . .	81-3105-3	Not Shown
Switch Box Cover. . . . .	No Longer Available	Not Shown
Switch Box . . . . .	No Longer Available	Not Shown
Mounting Screws (For switch box cover - 2 per) . . . . .	† 51-2153-9	Not Shown
Water Regulating Valve . . . . .	No Longer Available	Not Shown
Coupling Half Union. . . . .	13-3201-1	Not Shown
Mounting Bracket (For water regulating valve) . . . . .	613881-4	Not Shown
8-32 Stainless Steel Wing Nut . . . . .	† 54-8913-9	Not Shown
Water Solenoid Valve. . . . .	24-0405-1	Not Shown
Mounting Bracket (For water solenoid valve). . . . .	No Longer Available	Not Shown
90 Degree Half Union . . . . .	No Longer Available	Not Shown
 <b>CABINET GROUP</b>		
Top Cover. . . . .	655401-4	1
Trim Top Cover . . . . .	656761-4	1
Top Cover Mounting Screw . . . . .	† 51-2153-9	1
Lower Front Panel (Painted) . . . . .	683151-4	1
Lower Front Panel Mounting Screw. . . . .	† 50-2616-9	1
Back Panel (Painted) . . . . .	683101-4	1
Side Panel Right Hand (Painted). . . . .	No Longer Available	1
Side Panel Left Hand (Painted) . . . . .	No Longer Available	1
Foam Tape 9' . . . . .	† 92-0248-9	1
Trim Frame Cube Tray . . . . .	656451-4	1
Stainless Steel Front Panel Less Ice & Water Triggers & Ice Chute . . . . .	76-1955-3	1
Stainless Steel Panel, Less Soda Heads & Ice Chute . . . . .	† 76-1956-3	1
Access Door Tape, 4 Ft.* . . . . .	† 92-0250-9	1
Access Door Bin Liner (Inner) . . . . .	12616-1	
Ice Chute Hood . . . . .	76-1924-3	1
Stainless Steel Lower Front Panel. . . . .	683153-4	1
Stainless Steel Back Panel . . . . .	683103-4	1
Stainless Steel Side Panel, Right Hand . . . . .	No Longer Available	1
Stainless Steel Side Panel, Left Hand . . . . .	No Longer Available	1
Grill. . . . .	34-0617-3	
Cube Deflector (Under grill) . . . . .	12603-1	1
Ice Decal . . . . .	† 81-3104-3	1
Water Decal . . . . .	81-3105-3	1
Melting Tank. . . . .	No Longer Available	1
Water Inlet Adapter . . . . .	17-0602-1	1
Water Inlet Adapter Bushing, 5/8 O.D. x 3/8 I.D . . . . .	13-0001-1	1
Water Inlet Adapter Bushing, 3/8 O.D. x 1/4 I.D . . . . .	13-0003-1	1
Bin Condensate Tray Drain Tube, 21" Long . . . . .	† 44-2033-3	1
Drain Line Connection 3" Long . . . . .	† 44-2033-3	1
Drain T Connector . . . . .	No Longer Available	1
Melting Tank Drain Tube, 20" Long . . . . .	† 44-2033-3	1
Hose Clamp . . . . .	† 56-5064-9	1
5/8" O.D. Water Drain Elbow . . . . .	13-0047-1	1
Bin Drain Assembly . . . . .	† 617511-4	1
 <b>Following Parts used on 230 Volt, 50 Hz Dispensers Only:</b>		
Gear Drive Motor . . . . .	No Longer Available	1
Contacto* . . . . .	No Longer Available	Not Shown

\* The components are part of, or within item and illustration given. Not necessarily shown.

† Refer to Cross Reference Guide

# MDB-291, CONTINUED

ILLUSTRATION 1



## MDB-291, CONTINUED

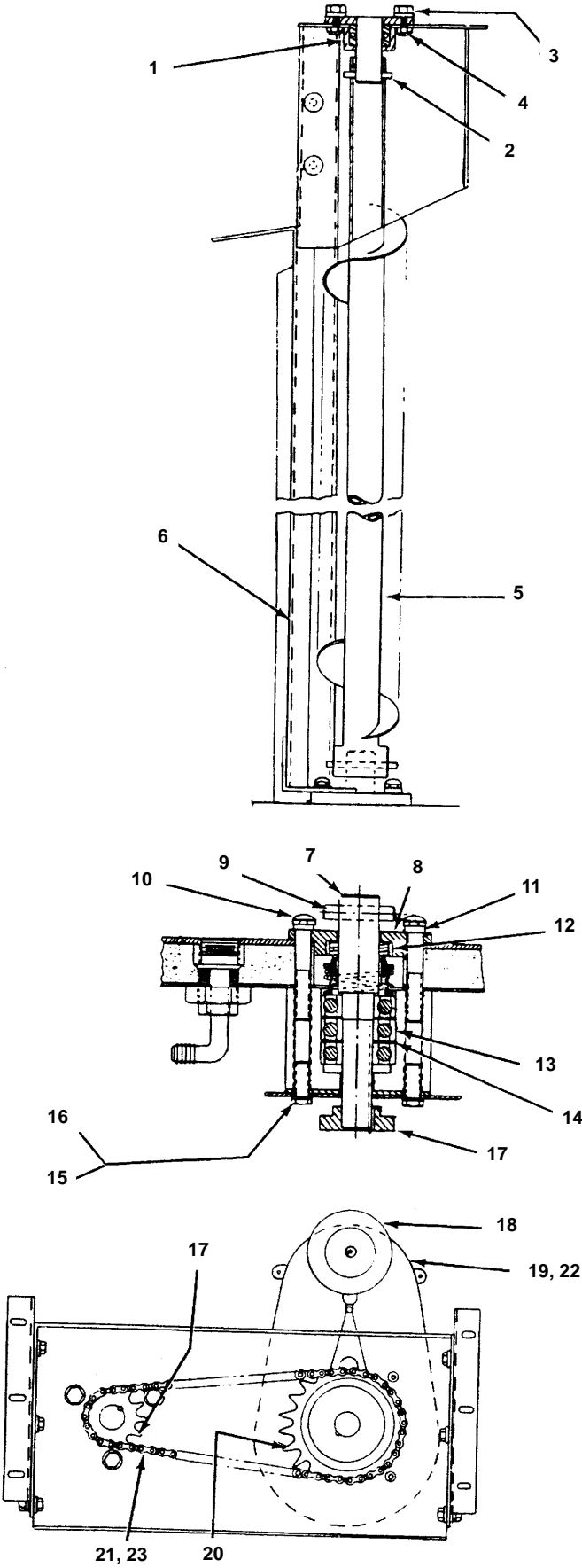
<b>Callous for Illustration 1</b>		<b>Part No.</b>
1	Rear Panel (Painted) . . . . .	683101-4
1	Rear Panel (Stainless steel) . . . . .	683103-4
2	Right Hand Side Panel (Painted) . . . . .	No Longer Available
2	Right Hand Side Panel (Stainless steel) . . . . .	No Longer Available
3	Lower Front Panel (Painted) . . . . .	683151-4
3	Lower Front Panel (Stainless steel) . . . . .	683153-4
4	Left Hand Side Panel (Painted) . . . . .	No Longer Available
4	Left Hand Side Panel (Stainless steel) . . . . .	No Longer Available
5	Grill . . . . .	34-0617-3
6	Cube Deflector (Under grill) . . . . .	12603-1
7	Melting Tank . . . . .	No Longer Available
8	Trim Frame Cube Tray . . . . .	656451-4
9	Lower Panel Mounting Screws . . . . .	† 50-2616-9
10	Trim Top Cover . . . . .	656761-4
11	Top Cover . . . . .	655401-4
12	Top Cover Mounting Screw . . . . .	† 51-2153-9
13	Stainless Steel Front Panel, Less Ice & Water Trigger & Ice Chute . . . . .	76-1955-3
13a	Stainless Steel Front Panel, Less Soda Heads & Ice Chute - for Cornelius . . . . .	† 76-1956-3
14	Ice Chute Hood Assembly . . . . .	76-1924-3
15	Ice Label . . . . .	† 81-3104-3
16	Manual Water Dispensing Valve . . . . .	† 202-FN-1101
17	Water Label . . . . .	81-3105-3
18	Trigger (For manual water dispensing valve) . . . . .	No Longer Available
19	Cover (For manual water dispensing valve) . . . . .	83-7602-3
20	Pivot block/actuating arm assembly . . . . .	No Longer Available
21	Microswitch (For ice trigger) . . . . .	No Longer Available
22	Access Door Bin Liner (Inner) . . . . .	12616-1
23	Wing Nut, #8-32 (Mounting ice chute bracket to ice chute) . . . . .	† 54-8913-9
24	1/3 H.P. Gear Drive Motor, 60 Hz. . . . .	24-0226-1
25	Motor Cover . . . . .	No Longer Available
26	Control Box Cover . . . . .	656561-4
27	Sheave 1/2" Bore (On drive motor) . . . . .	37-0001-1
28	A Belt . . . . .	37-0018-1
29	Bin Condensate Tray Drain Tube, 21" Long . . . . .	† 44-2033-3
30	Drain T Connector . . . . .	No Longer Available
31	Drain Tube, 3" Long . . . . .	† 44-2033-3
32	Melting Tank Drain Tube, 18" Long . . . . .	† 44-2033-3
33	Bin Drain Tube, 38" Long . . . . .	† 44-2033-3
34	Drain Tube Clamp . . . . .	† 56-5064-9
35	Bin Drain Assembly . . . . .	† 617511-4
36	Drain Elbow . . . . .	13-0047-1
37	Water Adapter, 1/2" NPT . . . . .	17-0602-1
38	Adapter Mounting Screw . . . . .	† 50-2624-9
39	Adapter Mounting Hex Nut . . . . .	† 54-2906-9
40	Foam Tape, 9 Ft. . . . .	† 92-0248-9
41	1/4-20 Wing Nut (Mounting ice chute to frame) . . . . .	54-8903-1
42	Access Door Bin Liner Tape 4 Ft. Long* . . . . .	† 92-0248-9
43	Bushing, 5/8" O.D. x 3/8" I.D . . . . .	13-0001-1
44	Bushing, 3/8" O.D. x 1/4" I.D . . . . .	13-0003-1
45	Water Adapter, 1/2" NPT . . . . .	17-0602-1
46	Water Regulator Valve . . . . .	No Longer Available
47	Wing Nut, #8-32 Stainless Steel . . . . .	† 54-8913-9
48	Contact (60 cycle)* . . . . .	† 76-2192-3
49	O-Ring 1/8" I.D. x 1/4" O.D. (2 required for 202-FN-1101)* . . . . .	No Longer Available
50	O-Ring 1/2" I.D. x 11/16" O.D. (2 required for 202-FN-1101)* . . . . .	No Longer Available
51	Valve Spring (2 required for 202-FN-1101)* . . . . .	13-8002-1
52	Valve Pallet (2 required for 202-FN-1101)* . . . . .	No Longer Available
	Ice Container-wire Grill Kit . . . . .	07-0053-3

\* The components are part of, or within item and illustration given. Not necessarily shown.

† Refer to Cross Reference Guide

**MDB-291, CONTINUED**

**ILLUSTRATION 2**





## MDB-291, CONTINUED

<b>Callouts for Illustration 2</b>	<b>PART NO.</b>
1 Upper Bearing Assembly . . . . .	† 10992-1
2 Upper Bearing Pin . . . . .	37-1011-1
3 Hex Nut (Mounting upper bearing assembly). . . . .	† 54-2953-9
4 Machine Screw (Mounting upper bearing assembly). . . . .	† 50-3184-9
5 Auger Assembly . . . . .	† 48-0004-1
6 Ice Chute Assembly . . . . .	No Longer Available
7 Lower Bearing Housing Assembly with Shaft . . . . .	15040-1
8 Lower Bearing Housing Seal . . . . .	No Longer Available
9 Lower Bearing Pin (Also see Page 4) . . . . .	37-1013-1
10 3/16 Bolt-16 Acorn Hd. (Mounting lower bearing) . . . . .	50-1307-1
11 Spacer (For acorn hd. bolt) . . . . .	37-1014-1
12 Lower Bearing Water Seal with Seat . . . . .	37-0501-1
13 Bearing for Lower Bearing Assembly (3 per) . . . . .	37-3003-1
14 Flat Washer for Lower Bearing Assembly (2 per) . . . . .	† 55-7311-9
15 Lockwasher (Mounting lower bearing assembly). . . . .	† 55-4514-9
16 Screw, 3/8-16 x 1 Hex Cap Brass . . . . .	† 50-3765-9
17 Sprock (Lower bearing shaft) . . . . .	37-0010-1
18 Sheave 3/8" Bore (Gear train input) . . . . .	37-0002-1
19 Gear Train . . . . .	No Longer Available
20 Sprocket (Gear train output) . . . . .	37-0011-1
21 Chain Link Steel No. 40 . . . . .	37-0009-1
22 Fiber Gear (Inside gear train)* . . . . .	No Longer Available
23 Connecting Link for Chain . . . . .	37-0007-1

\* The components are part of, or within item and illustration given. Not necessarily shown.

**INTENTIONALLY LEFT BLANK**