

# OWNER'S MANUAL

## MODEL BW4B SLICER WARMER



Model BW4B

Supplier Name: **MARSHALL AIR SYSTEMS, INC.**  
Address: 419 Peachtree Drive South  
Charlotte, NC 28217  
Model #: \_\_\_\_\_  
Serial #: \_\_\_\_\_  
\_\_\_\_\_  
\_\_\_\_\_  
Date Received: \_\_\_\_\_  
Date Installed: \_\_\_\_\_  
Telephone #: 704-525-6230  
Fax #: 704-525-6229  
Service Referral #: 800-722-3474  
Local Service: \_\_\_\_\_  
Local Service #: \_\_\_\_\_

### PRODUCT DESCRIPTION

The Model BW4B slicer/warmer holds meat on the slicer at or above the minimum required temperature as mandated by food safety codes. The Slicer Warmer is designed to be bolted to a counter or table surface and when properly assembled with either a Globe 4913, 4975, or Hobart 2912 series slicer resting on its base. The Slicer Warmer features Marshall's ThermoGlo™ heating technology. Heat radiates from every square inch of the flat plate surface providing uniform holding temperature and improved moisture retention. The Slicer Warmer heating system replaces heat lamps, bulbs and lamp sockets with a robust unbreakable design that blocks grease vapors from entering the wiring compartment. This Slicer Warmer system is easy to keep clean and mounted on a swivel that pivots to provide easy access to the slicer for adding and removing product. The system then self centers over the slicer with a light touch of the handle. As an added feature, this Slicer Warmer is adjustable to accommodate either a Globe 4913, 4975, or Hobart 2912 series slicer.

### GENERAL SPECIFICATIONS

Model: BW4B Slicer Warmer  
Height: 34.250"  
Width: 28.375"  
Depth: 21.250"  
Electrical: 120 VAC, 60Hz, 12 Amps  
240 VAC, 50/60Hz 6.1 Available  
Power Cord: 8.0 ft 3 wire ground type UL rated  
Weight: 36 lbs. BW4B  
Approvals: ETL, CSA and NSF

### FOR YOUR SAFETY

**DO NOT STORE OR USE GASOLINE OR OTHER FLAMMABLE VAPORS OR LIQUIDS IN THE VICINITY OF THIS OR ANY OTHER APPLIANCE.**

**WARNING: IMPROPER INSTALLATION, ADJUSTMENT, ALTERATION, OR MAINTENANCE CAN CAUSE PROPERTY DAMAGE, INJURY OR DEATH. READ THE INSTALLATION, OPERATION AND MAINTENANCE INSTRUCTIONS THOROUGHLY BEFORE INSTALLING OR SERVICING THIS EQUIPMENT.**

**KEEP THIS MANUAL IN A SAFE PLACE AND RETAIN FOR FUTURE USE.**





---

**TABLE OF CONTENTS**

PRE-INSTALLATION.....1

INSTALLATION ..... 1

DAILY OPERATION AND CLEANING GUIDE .....4

MONTHLY MAINTENANCE .....4

TROUBLESHOOTING CHART.....4

REPLACEMENT PARTS .....5

**ILLUSTRATIONS**

BW4B DIMENSIONAL DRAWING..... FIGURE 1

BW4B REPLACEMENT PARTS ..... FIGURE 2

BW4B UPPER HEATER ARM RELOCATION INSTRUCTIONS..... FIGURE 3

WIRING SCHEMATIC (BW4B 120V)..... DWG 147685

WIRING SCHEMATIC (BW4BINTLCE 240V)..... DWG 154660



# OWNER'S MANUAL

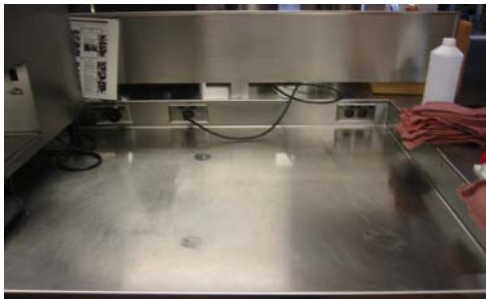
## MODEL BW4B SLICER WARMER



### PRE-INSTALLATION

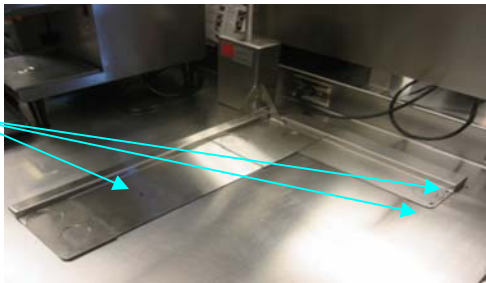
1. The Slicer Warmer is packaged to minimize the risk of shipping damage. Immediately upon receipt, make certain to inspect the unit for damage. **FILE ALL CLAIMS WITH THE FREIGHT CARRIER.**
2. Unpack unit and remove all protective paper or plastic covering metal parts . **FILE ANY CONCEALED DAMAGE CLAIMS WITH THE FREIGHT CARRIER.**
3. **TOOLS REQUIRED:** fine tip marker, center punch, phillips head screw driver, 7/16" wrench, alcohol, rags, 1/8", 3/16" & 1/4" drill bit, drill, safety glasses

### INSTALLATION



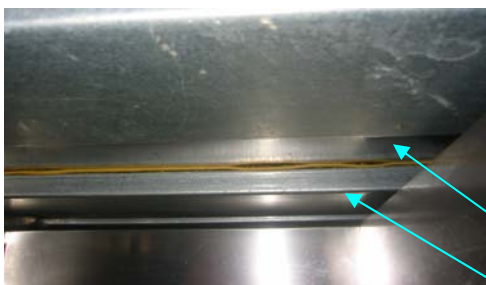
#### Step 1.

**WEAR SAFETY GLASSES.** Remove slicer, existing heat lamps and any locating brackets from counter. Clean counter. **DO NOT ATTACH UPPER HEATER ARM ASSEMBLY TO THE BASE ASSEMBLY AT THIS TIME.**



#### Step 2.

Place Slicer Warmer base on counter as far right as possible while maintaining enough room for the slicer to be added. Check under the counter for support ribs and adjust position if necessary so the mounting holes and hardware do not interfere with the ribs. **MAKE SURE THERE IS AT LEAST 12" CLEARANCE TO THE LEFT OF THE BASE FOR PIVOTING OF THE UPPER HEATER. WHEN IN PIVOTED POSITION, MAKE SURE SLICER WARMER HEATER DOES NOT DAMAGE ADJACENT EQUIPMENT.** If the underside of the counter is inaccessible, additional hardware may be needed such as 1/4" diameter max. stainless steel bolts.



Counter Underside

Support Rib



### Step 3.

Once the location is established, use fine tip marker and mark the (3) mounting holes. Remove Slicer Warmer base and set aside.



### Step 4.

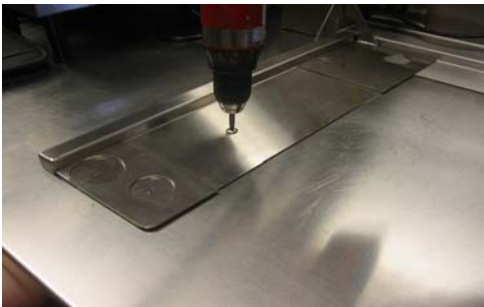
Center punch for (3) holes.

If using provided hardware, stainless steel can be difficult to drill, start with a 1/8" drill bit then a 3/16" and finally a 1/4" drill bit. Deburr top edges. Be sure all shavings are gathered and disposed of properly.



### Step 5.

Clean counter and underside of base with alcohol. Apply food service grade gray adhesive (provided) to underside of base. Adhesive should be applied to entire underside of base as shown in photo. Align mounting holes and place base on counter.



### Step 6.

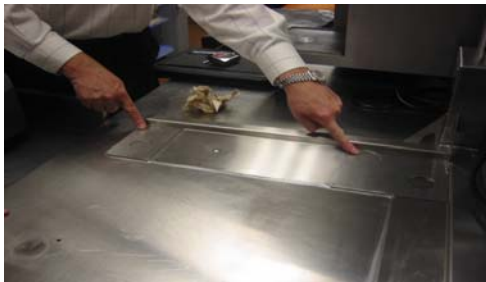
Bolt the base to the counter using the hardware provided including screw, washer, lock washer and nut for all three mounting holes.

**CHECK THAT BASE IS BOLTED TO COUNTERTOP AND ALL SCREWS ARE SECURELY TIGHTENED.**



### Step 7.

Smooth adhesive that seeps out from edges. Add and smooth adhesive around the rest of the base, wipe away excess.



### Step 8.

Identify circular cutouts for slicer feet, "G" for Globe, "H" for Hobart models. Place slicer onto base with the two rear feet in the correct circular cutouts.

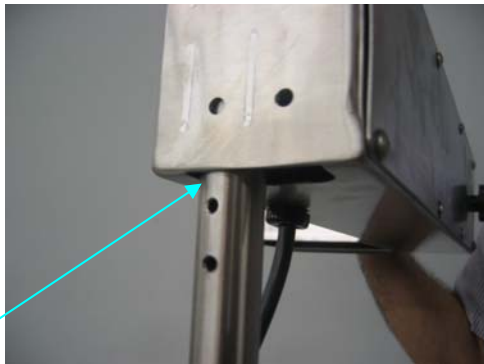
### Step 9.

Remove screws and lock washers from the top end of the tube. **DO NOT DISCARD**. Insert upper heater arm onto base tube through the front of the opening on the underside of the upper heater arm. The tube must be inserted through the correct side of the bottom slot as shown.

Orientate cover plate to cover the hole in the top of the arm and secure the arm to the tube with the screws and lock washers. Center heater arm and check for interference with slicer unit.

Confirm that heater arm is in correct position for your particular slicer type. See Figure 3 of this manual for correct Globe/Hobart positioning. Failure to confirm will result in product not being held to proper temperature.

Installation is now complete. Plug the slicer and slicer warmer power cords in. **ROUTE AND SECURE POWER CORDS SO THERE WILL BE NO DAMAGE FROM SLICER WARMER HEAT**. Turn the slicer warmer on, it will take approximately 30 min. to heat up completely. A small amount of smoke may come from the unit, this is normal the first time while the insulation cures.



Tube must be inserted into this side of slot.



# OWNER'S MANUAL

## MODEL BW4B SLICER WARMER



### DAILY OPERATION AND CLEANING GUIDE

1. Turn on the power switch.
2. A red indicator light located next to the switch will illuminate, indicating power is going to the heaters.
3. The unit is ready to use after a 30-minute preheat period.

### CLEANING CHECKLIST

1. Turn off the unit and allow it to cool for 30 minutes.
2. Cleaning may be done with a mild detergent and damp cloth.

**DO NOT IMMERSE WARMER IN WATER!**  
**DO NOT SATURATE WARMER SURFACES WITH WATER!**  
**DO NOT USE ABRASIVE OR CORROSIVE CHEMICAL CLEANERS!**  
**DO NOT USE SHARP OBJECTS TO SCRAPE CLEAN!**

3. Allow sufficient drying time before attempting to use.

### MONTHLY MAINTENANCE

Follow the daily cleaning checklist. There are no user-replacement items on this unit. Be sure to inspect unit for loose screws, loose adhesive, damaged parts and repair immediately or contact your local authorized Service Agency.

### TROUBLESHOOTING CHART

**\*\* DISASSEMBLING HEATER VOIDS WARRANTY \*\***

**\*\* BE SURE POWER TO UNIT IS DISCONNECTED BEFORE TROUBLESHOOTING \*\***

Identify problem in the left column and look for probable cause and solution in right hand column. Probable causes listed in the order they are most likely to happen. This sequence should be used to isolate the problem.

<u>PROBLEM</u>	<u>PROBABLE CAUSE</u>	<u>SOLUTION</u>
1. No Heat/No Indicator Light	Unplugged	Plug in
	Circuit breaker is tripped	Reset breaker; call electrician if tripped twice
	Cord/plug defective	Replace cord/plug
	Broken power switch	Replace switch
	Broken heating unit	Contact Local Service Agency
2. Heat/No Indicator Light	Broken Indicator Light	Replace Indicator Light
3. No Heat/Indicator Light	Broken heating unit	Contact Local Service Agency



# OWNER'S MANUAL

## MODEL BW4B SLICER WARMER



4. Product below Holding Temperature      Incorrect upper heater position      Determine slicer type (Globe vs. Hobart) and change position. See Figure 3, 10.

### REPLACEMENT PARTS

When ordering parts, make sure to specify the machine model number and serial number as shown by the label attached to the right end of the Upper Arm Assembly.

PART#	DESCRIPTION	QTY PER UNIT	FIGURE
151730	BASE ASBY	1	2
151102	BASE ASBY #14480-13697	1	2
147535	BASE ASBY #13696 & BEFORE	1	2
503148	BOOT, SWITCH	1	2
502080	CONNECTOR, STRAIN RELIEF	1	2
502075	POWER CORD <b>120v</b>	1	2
154634	POWER CORD <b>240v</b>	1	Schematic
145573	SWITCH GUARD	1	2
503926	LIGHT, INDICATOR RED <b>120v</b>	1	2
503342	LIGHT, INDICATOR RED <b>240v</b>	1	Schematic
151727	PLATE, COVER	1	2
151129	PLATE, COVER #14480-13697	1	2
145683	PLATE, COVER #13696 & BEFORE	1	2
151728	PLATE, COVER SMALL	1	2
151132	PLATE, COVER SMALL #14880-13697	1	2
502587	¼-20X1.250 SCREW	2	2
502122	#10-24 X .375" SCREW	4	2
500789	SWITCH, TOGGLE	1	2
148000	TGLO, LOWER ASBY <b>120v</b>	1	2
154657	TGLO, LOWER ASBY <b>240v</b>	1	Schematic
154655	TGLO, UPPER ASBY <b>240v</b>	1	Schematic
145282	TGLO, UPPER ASBY <b>120v</b>	1	2
150199	TGLO, UPPER ASBY AND ARM #13696 & BEFORE	1	2

GENERAL SPECIFICATIONS:

HEIGHT: 34.250"

WIDTH AT BASE: 25.500"

WIDTH AT ARM GLOBE POSITION: 25.375"

WIDTH AT ARM HOBART POSITION: 28.375"

DEPTH AT BASE: 21.250"

DEPTH AT ARM: 18.000"

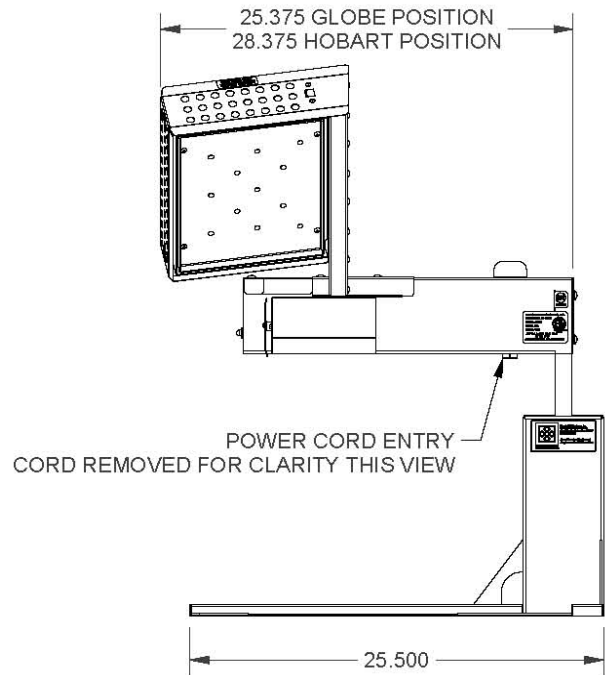
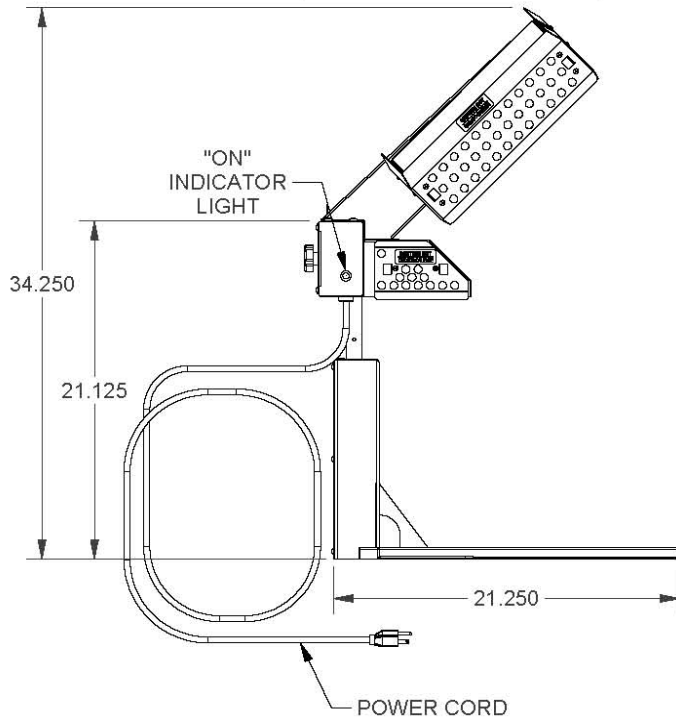
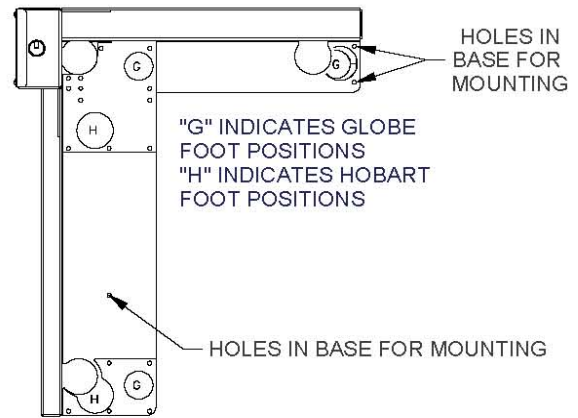
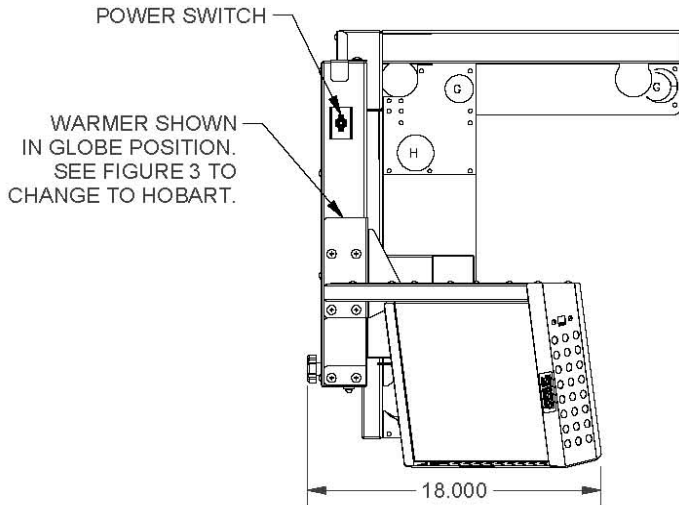
ELECTRICAL: 120V, SINGLE PHASE, 12 AMPS

240V, SINGLE PHASE, 6.1 AMPS

POWER CORD: 8 FT, 3 WIRE INCLUDING GROUND WITH NEMA 5-15 PLUG

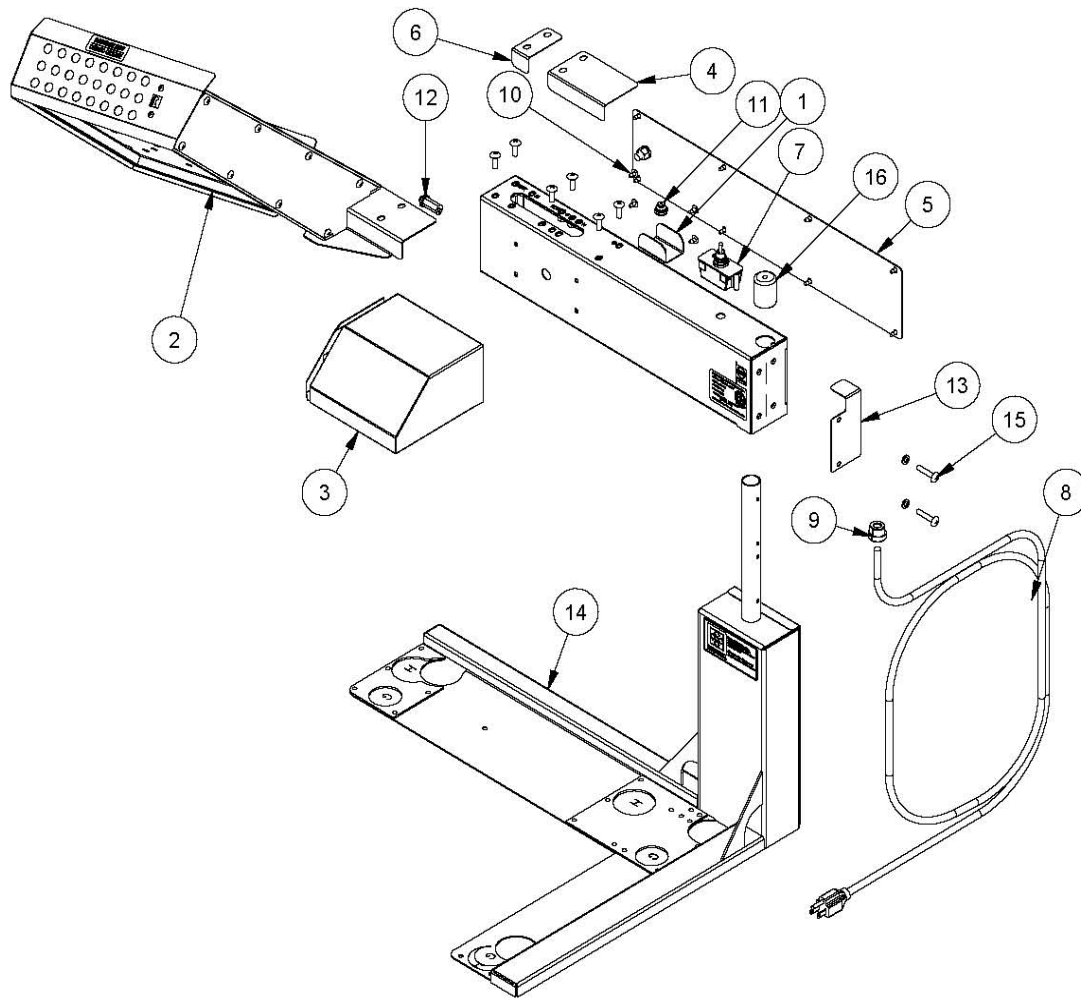
8 FT, 3 WIRE INCLUDING GROUND WITHOUT PLUG

BASE VIEW WITH TOP HEATER ARM REMOVE  
REFERENCE ONLY



## BW4B DIMENSIONAL DRAWING

# FIGURE 1

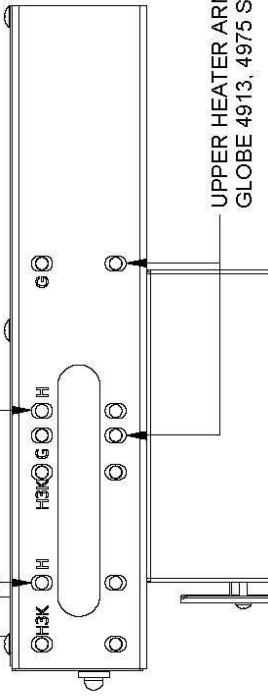


Parts List			
ITEM	PART NO.	DESCRIPTION	QTY
1	145573	SWITCH GUARD	1
2	145253	TGLO, UPPER ASBY 120V	1
	150199	TGLO, UPPER ASBY AND ARM #13696 & BEFORE 120V	1
	154655	TGLO, UPPER ASBY 240V	1
3	148000	TGLO, LOWER ASBY 120V	1
	154657	TGLO, LOWER ASBY 240V	1
4	151727	PLATE, COVER	1
	151129	PLATE, COVER #14480-13697	1
	145683	PLATE, COVER #13696 & BEFORE	1
	151128	COVER, PIVOT ARM	1
6	151728	PLATE, COVER SMALL	1
	151130	PLATE, COVER SMALL #14480-13697	1
7	500885	SWITCH, TOGGLE	1
8	502075	POWER CORD 120V	1
	154634	POWER CORD 240V	1
9	502080	CONNECTOR, STRAIN RELIEF	1
10	502122	10-24 X 3/8" SCREW	4
	503148	BOOT, TOGGLE SWITCH	1
	503926	LIGHT, INDICATOR RED 120V	1
	503342	LIGHT, INDICATOR RED 240V	1
13	151729	PLATE, HOLE COVER	1
	151730	BASE ASBY	1
	151102	BASE ASBY #14480-13697	1
14	147535	BASE ASBY #13696 & BEFORE	1
	502587	1/4-20 X 1.250 SCREW	2
	504157	CAP, 1" TUBING	1

## BW4B REPLACEMENT PARTS

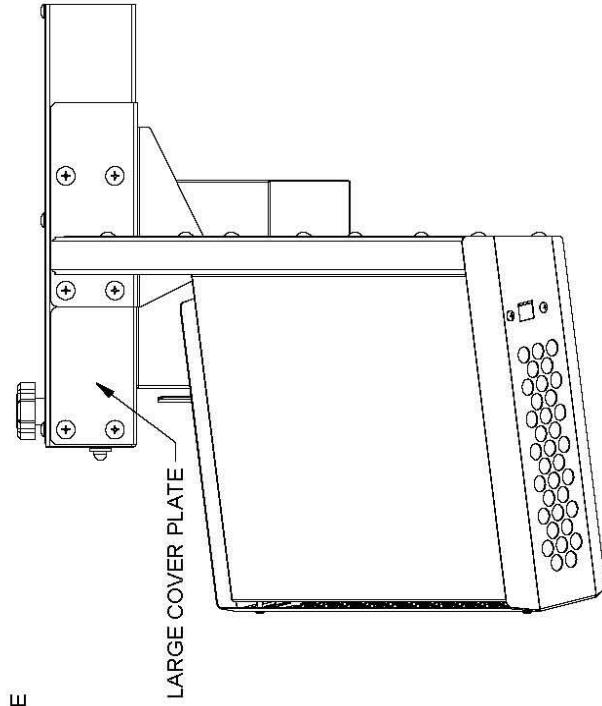
# FIGURE 2

UPPER HEATER ARM MOUNTING HOLES  
HOBART 2912 SLICER

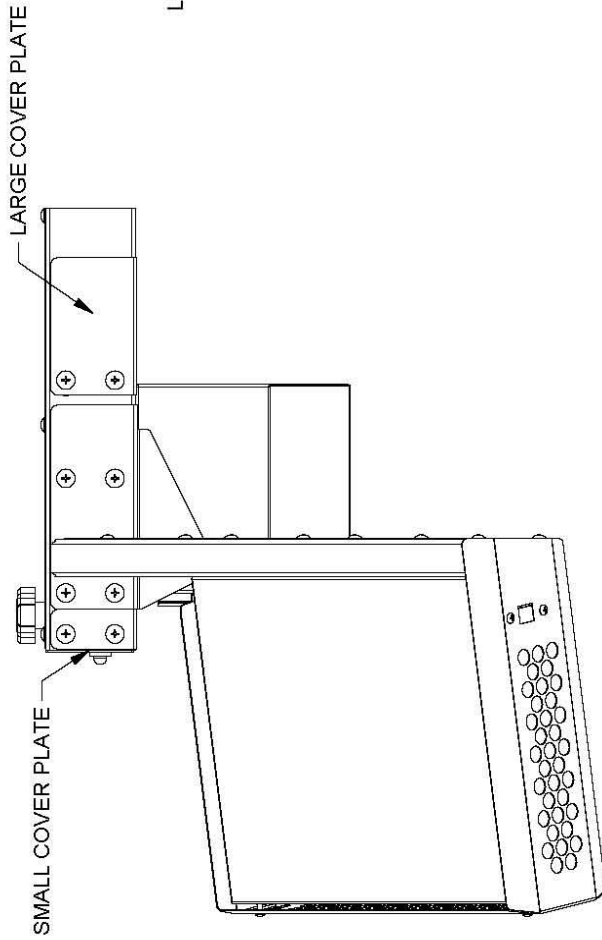


UPPER HEATER ARM MOUNTING HOLE DETAIL  
UPPER HEATER ARM AND COVER PLATES REMOVED FOR CLARITY

UPPER HEATER ARM MOUNTING HOLES  
GLOBE 4913, 4975 SLICER



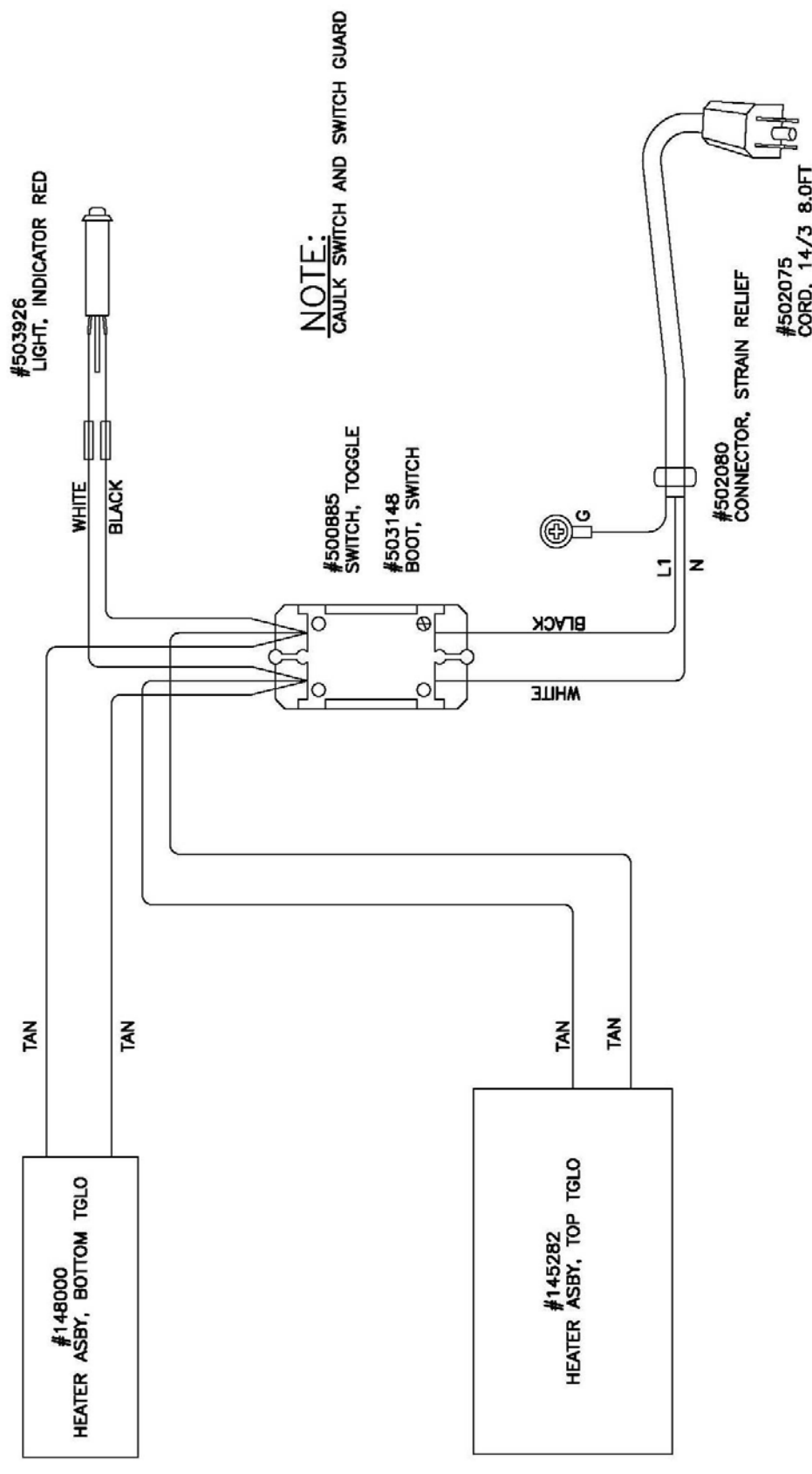
GLOBE 4913, 4975 SLICER



HOBART 2912 SLICER  
(IF CONVERTING FOR HOBART 2912  
SMALL COVER PLATE AND MOUNTING  
HARDWARE LOCATED INSIDE ARM)

# UPPER HEATER ARM POSITION RELOCATION INSTRUCTIONS

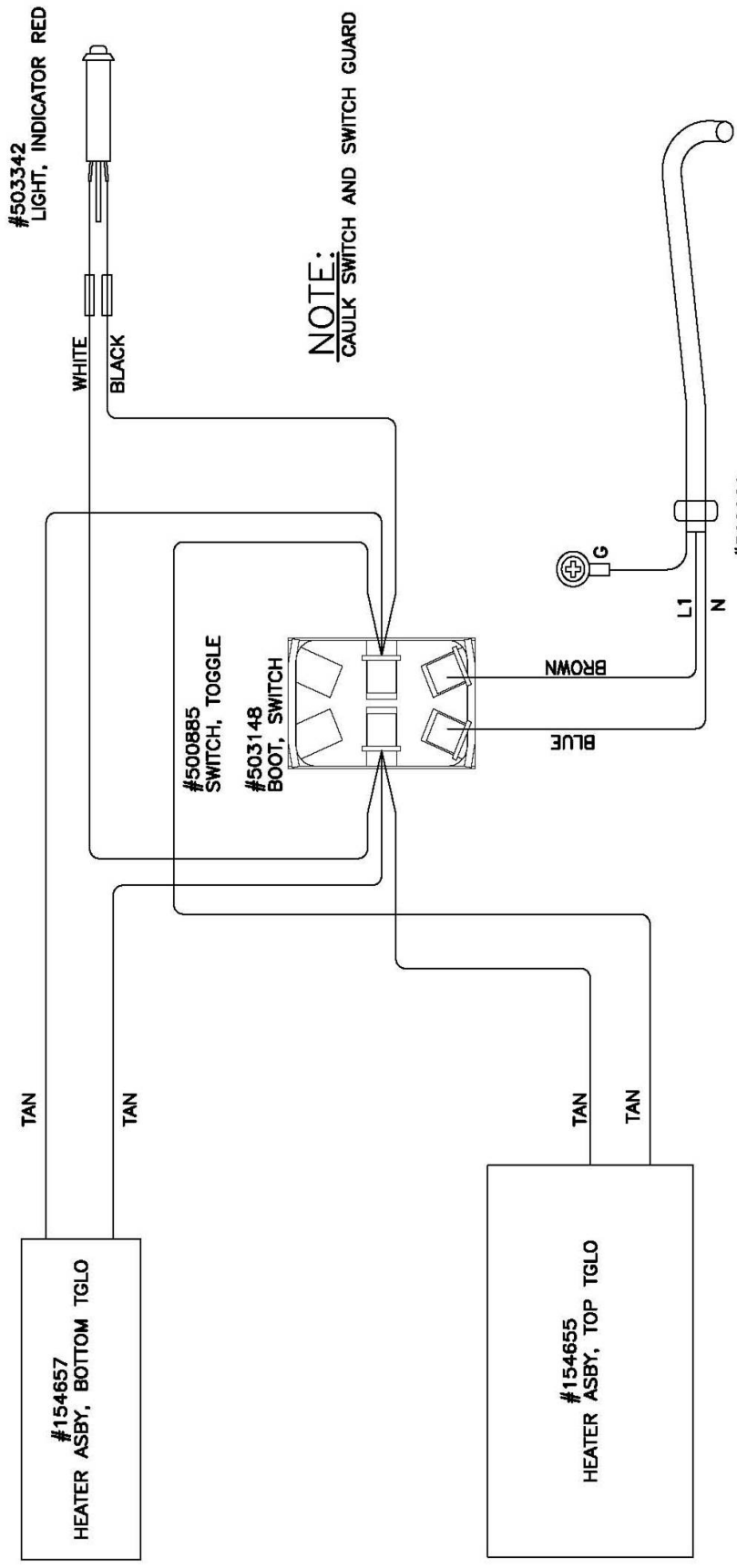
## FIGURE 3



**NOTE:**  
CAULK SWITCH AND SWITCH GUARD

REV	DESCRIPTION	DATE	REV. BY	DRAWN BY:	DATE	REV. DATE:	<b>MARSHALL AIR SYSTEMS, INC.</b>		
1	AMP RATING WAS 9A	02-FEB-2006	J.L.	J.L.	13-OCT-2005		SCHEMATIC, BW4B 120V 12.1A		
2	REMOVED WATTS	21-JUN-2006	PW	GENERIC NAME:			-		
3	WAS 10 A	26-JUL-2006	J.L.	PRODUCT LINE:			SIZE:	ROUTE:	DWG. NO.:
4	SWITCH WAS 5.00789	03-DEC-2009	J.L.	HHC			A	ELECT	147685
5	14800 WAS 145951, 145282 WAS 145253	07-MAY-2010	J.L.	FAB			SCALE:	IMAGE MAY BE REDUCED	CODE:
							1:2	NTS	BW4B

154660



**NOTE:**  
CAULK SWITCH AND SWITCH GUARD

#504145  
CORD SET  
#154634  
CUT OFF PLUG

#502080  
CONNECTOR, STRAIN RELIEF

REV	DESCRIPTION	DATE	REV. BY	DRAWN BY:	DATE:	MARSHALL AIR SYSTEMS, INC.			
1	#504145 WAS CORD #503350	11-DEC-2009	WW	J.L.	02-DEC-2009	SCHEMATIC, BW4BINTLCE 240V 6.1A			
2	154657 WAS 154656; 154655 WAS 154654	07-MY-2010	J.L.			SIZE: A	ROUTE: MANUF	DWG. NO.: 154660	REV.: 2
MATERIAL: REFERENCE						IMAGE MAY BE REDUCED	CODE: BW4BINTLCE		
						SCALE: NTS	NTS		