

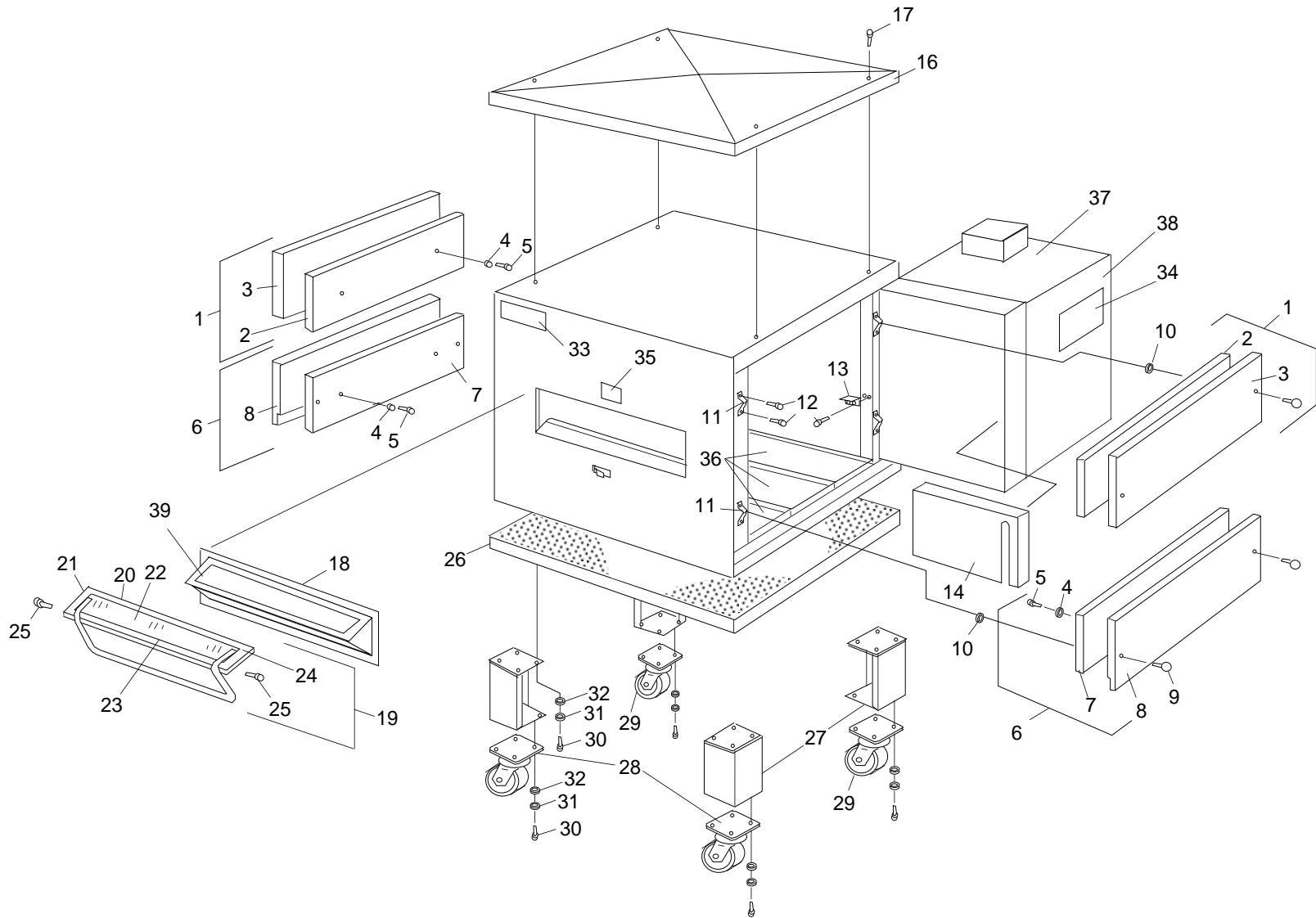
## SECTION 6 PARTS LIST

FIGURE NO.	DESCRIPTION	PAGE NO.
6-1	Oven Panels, Window and Legs Exploded Drawing	60
6-2	Air Finger Exploded Drawing	62
6-3	Control Panel Exploded Drawing	64
6-4	Blower and Shroud Exploded Drawing	66
6-5	Conveyor Exploded Drawing	68
6-6	Gas Burner and Piping Assembly Exploded Drawing	70
6-7	Machinery Compartment Exploded Drawing	72
6-8	Electric Oven Electrical Panel Drawing	74
6-9	Junction Box and Export Transformer Exploded Drawing	76

**NOTE:** Throughout Section 6 parts lists the following abbreviations are used:

*A/R = Quantity as required*

*N/A = Does not apply*



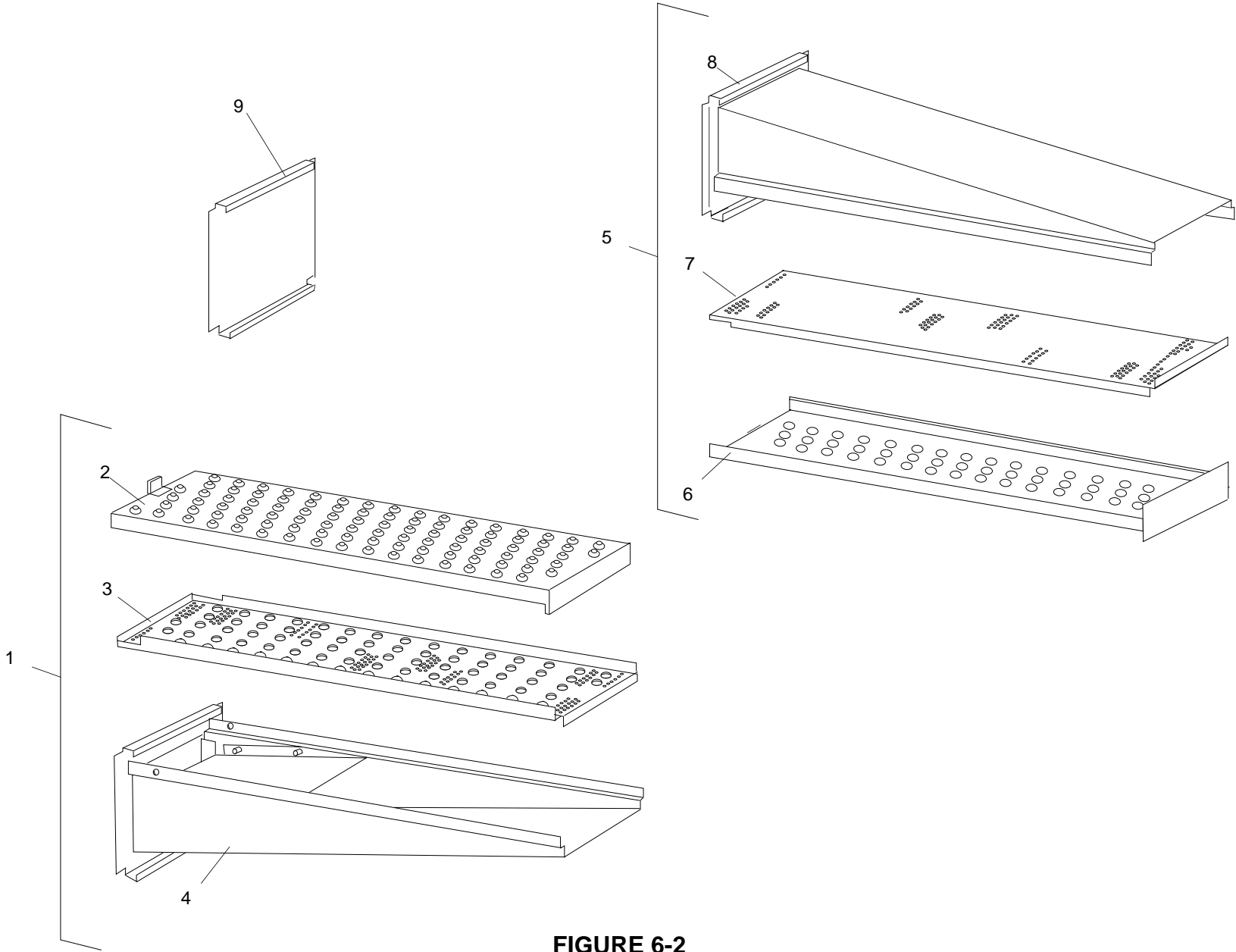
69

**FIGURE 6-1**  
**OVEN PANELS, WINDOW AND LEGS**

## OVEN PANELS, WINDOW AND LEGS

ITEM NO.	QTY.	PS200-R68 PART NO.	PS220-R68 PART NO.	PS224-R68 PART NO.	DESCRIPTION
1	2	49400-0160	31314	49400-0245	END PLUG ASSEMBLY - UPPER
2	1	35900-0285	35900-0371	35900-0436	INNER PANEL - END PLUG
3	1	30261	30420	35900-0245	WELDMENT - OUTER PANEL UPPER END PLUG
4	2	21416-0005	21416-0005	21416-0005	FLAT WASHER SS 1/4"
5	2	2000346	2000346	2000346	SCREW SS 1/4-20 x 1/2"
6	2	49400-0161	49400-0244	49400-0252	END PLUG ASSEMBLY - LOWER
7	1	35900-0286	35900-0472	35900-0463	INNER PANEL - END PLUG
8	1	30264	30514	30531	WELDMENT - OUTER PANEL - LOWER END PLUG
4	2	21416-0005	21416-0005	21416-0005	FLAT WASHER SS 1/4"
5	2	2000346	2000346	2000346	SCREW SS 1/4-20 x 1/2"
9	8	21296-0002	21296-0002	21296-0002	WING SCREW x 1/4-20 x 1/2"
10	8	21182-0006	21182-0006	21182-0006	NUT, PUSH TYPE, BOLT RETAINER, SS
11	8	30278	30278	30278	MOUNTING BRACKET - END PLUG
12	A/R	21296-0005	21296-0005	21296-0005	SCREW, WASHERHEAD 10-16 x 3/4", SS
13	4	35900-0043	35900-0043	35900-0043	SHELF BRACKET - UPPER END PLUG
14	1	35900-0314	35900-0314	35900-0314	CHAIN GUARD-RIGHT END DRIVE
14	1	30756	30756	30756	CHAIN GUARD-LEFT END DRIVE
16	1	31357	31261	30878	OVEN TOP
17	4	21256-0008	21256-0008	21256-0008	SCREW 10-32 x 3/8" SS
18	1	31382	31382	31382	WINDOW MOUNTING FRAME, L.H.
18	1	30280	30280	30280	WINDOW MOUNTING FRAME, R.H.
19	1	30285	30285	30285	GLASS DOOR ASSEMBLY
20	1	30286	30286	30286	GLASS TOP FRAME
21	1	17130-0006	17130-0006	17130-0006	SEALANT, SILICON RUBBER, 11OZ.
22	1	22140-0017	22140-0017	22140-0017	TEMPERED GLASS
23	1	33300-0273	33300-0273	33300-0273	TUBE, GLASS FRAME, HINGE
24	1	30287	30287	30287	GLASS DOOR FRAME WELDMENT
25	2	34121-0003	34121-0003	34121-0003	SCREW, THUMB PIVOT
26	1	37900-0025	37900-0184	37900-0196	BASE PAD
27	4	37900-0102	37900-0102	37900-0102	LEG, 6"
28	2	22290-0009	22290-0009	22290-0009	SWIVEL CASTER W/BRAKE
29	2	22290-0010	22290-0010	22290-0010	SWIVEL CASTER
30	A/R	220373	220373	220373	HEX BOLT, 3/8"-16 X 1"
31	A/R	21426-0001	21426-0001	21426-0001	SPLIT WASHER, 3/8"
32	A/R	21416-0001	21416-0001	21416-0001	FLAT WASHER, 3/8"
33	1	22500-0021	22500-0021	22500-0021	PLATE, MM
34	1				OPERATING INSTRUCTIONS, GAS
35	1	22500-0041	22500-0041	22500-0041	LABEL, CAUTION HOT SURFACE
36	3	35900-0387	35900-0437	35900-0467	DRIP PANS
37	1	30258	30258	30258	CONTROL ENCLOSURE, TOP ASSEMBLY
38	1	30256	30256	30256	CONTROL ENCLOSURE DOOR
39	per ft.	22420-0005	22420-0005	22420-0005	WINDOW GASKET, SILICON, PER FOOT

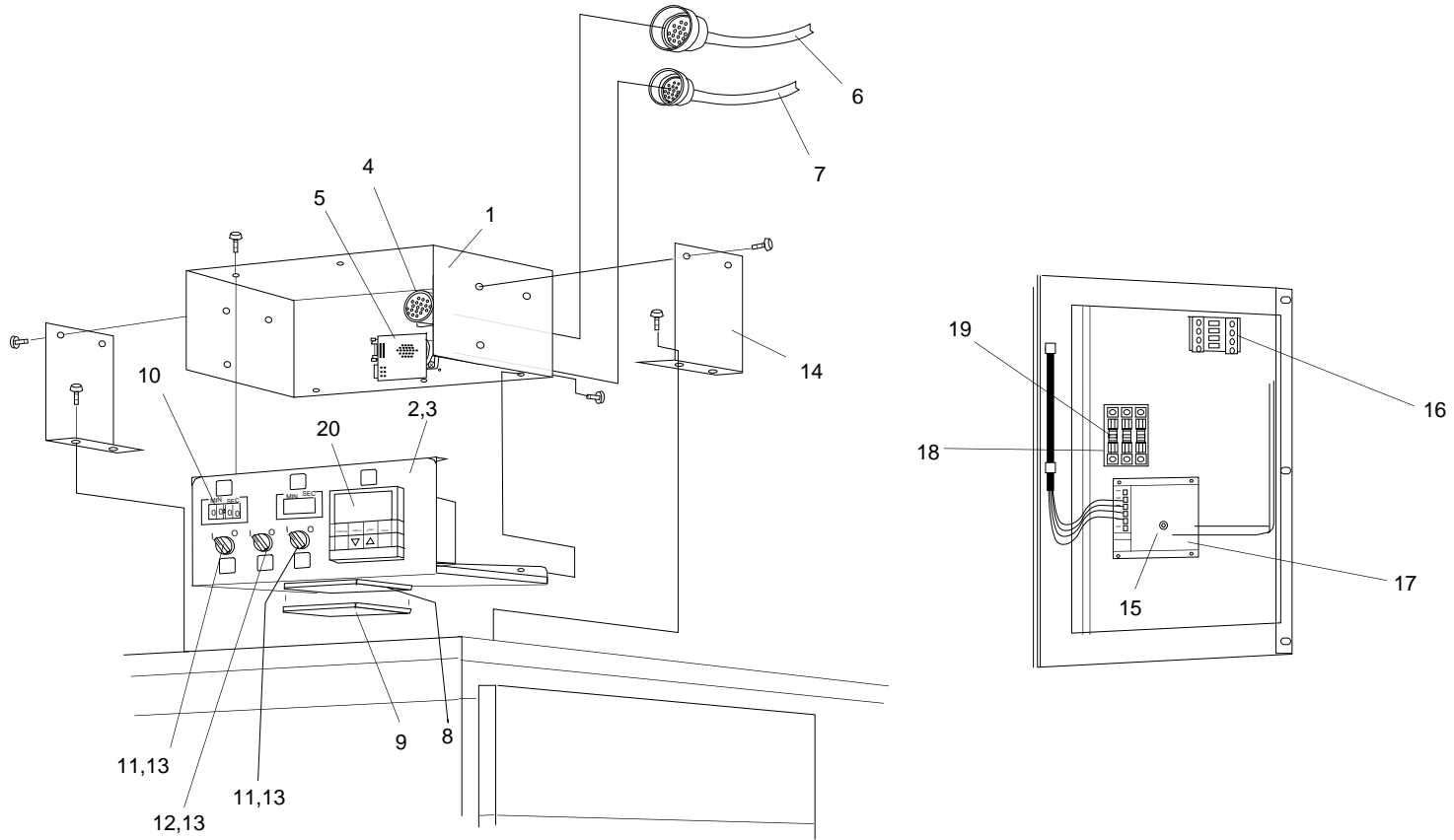
62



**FIGURE 6-2  
AIR FINGERS**

**AIR FINGERS**

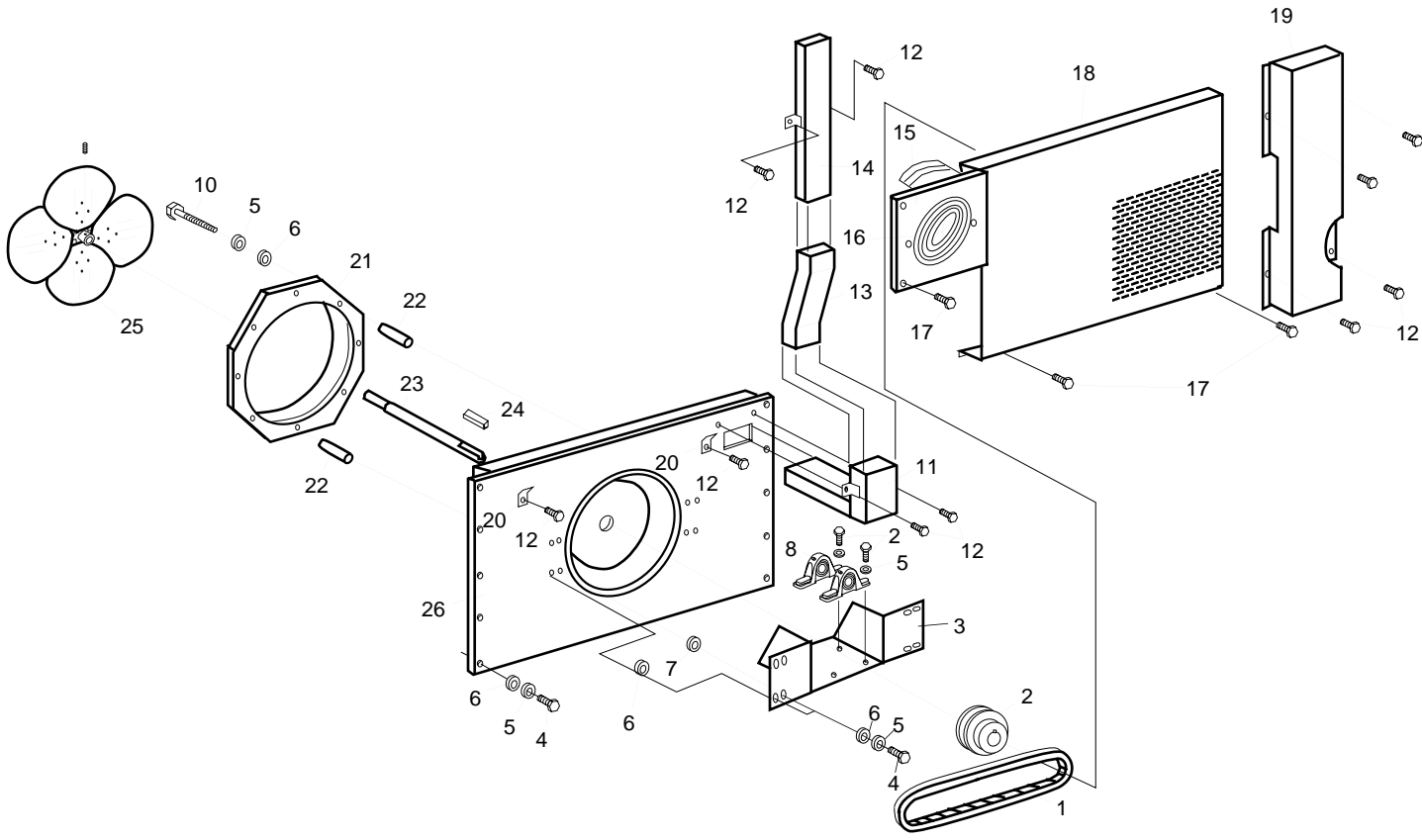
ITEM NO.	PS200-R68 PART NO.	PS220-R68 PART NO.	PS224-R68 PART NO.	DESCRIPTION
1	49400-0146	49400-0242	49400-0249	FINGER ASSEMBLY SS M6
2	37900-0051	37900-0172	37900-0217	COVER PLATE M6
3	37900-0123	37900-0209	37900-0219	INNER PLATE SS - SUPER FINGER
4	49400-0270	48400-0274	49400-0272	FINGER MANIFOLD ASSEMBLY SS
5	49400-0145	49400-0243	49400-0250	UPPER FINGER ASSEMBLY M3RN, NON-COLUMNATING SS
6	37900-0230	37900-0210	37900-0220	COVER PLATE M3
7	35900-0291	35900-0471	35900-0477	INNER PLATE, NON-COLUMNATING SS w/NO ROWS OF HOLES
8	49400-0269	49400-0273	49400-0271	FINGER MANIFOLD ASSEMBLY, SS, 4.2" clearance in oven
9	35900-0287	35900-0287	35900-0287	FULL BLANK SS



**FIGURE 6-3  
CONTROL PANEL**

## CONTROL PANEL

ITEM NO.	QTY.	PART NO.	DESCRIPTION
1	1	31120	CONTROL PANEL ENCLOSURE
2	1	31118	FACE PANEL, REMOTE
3	1	31119	LABEL, FACE PANEL, REMOTE
4	1	32340	RECEPTACLE CONTROL BOX ASSEMBLY AC
5	1	32341	RECEPTACLE/BOARD ASSEMBLY DC
6	1	32142	CABLE AND RECEPTACLE ASSEMBLY 16 PIN AC
7	1	32141	CABLE AND RECEPTACLE ASSEMBLY 12 PIN DC
8	1	31370	FAN, TUBE AXIAL
9	1	3000330	FILTER/GUARD, FAN PLASTIC
10	1	32339	THUMBWHEEL ASSEMBLY, SPEED CONTROL
11	2	28021-0062	SWITCH KNOB - BLUE
12	1	28021-0063	SWITCH KNOB - RED
13	3	27060-0012	CONTACT BLOCK W/BASE
14	2		LEG, CONTROL PANEL ENCLOSURE
15	1	22500-0131	LABEL - TEMPERATURE DOT 170°F (77°C)
16	3	28041-0008	CONTACTOR, DP 25A, 120V COIL 4P
17	1	42810-0133	CONVEYOR SPEED CONTROL
18	1	27021-0011	FUSEBLOCK, 30A, 600V, 5P Class M
19	1	28154-0003	FUSE TM DELAY 0.9A, 250V
20	1	42810-0138	TEMPERATURE CONTROLLER

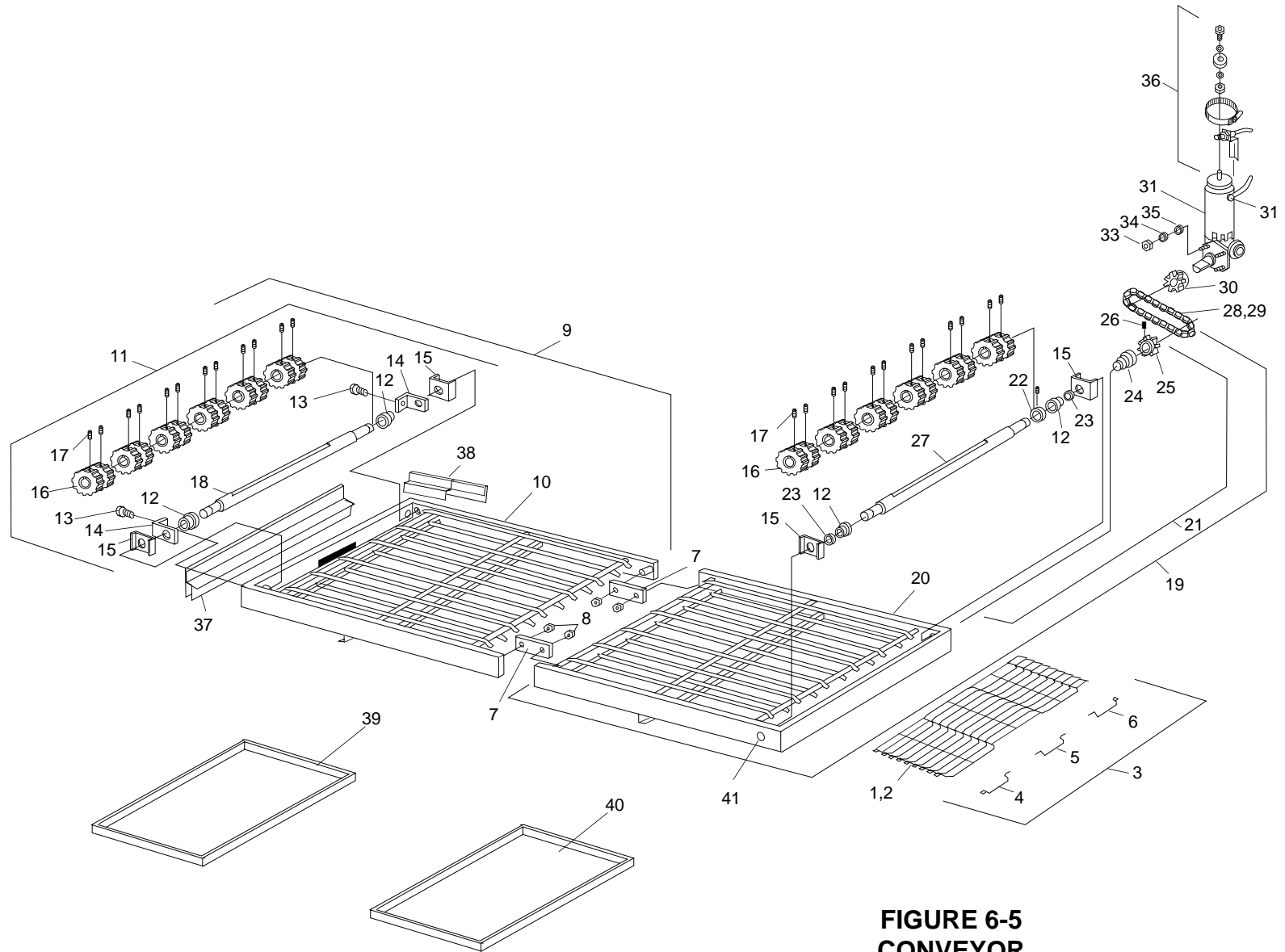


**FIGURE 6-4**  
**BLOWER AND SHROUD**



**BLOWER AND SHROUD**

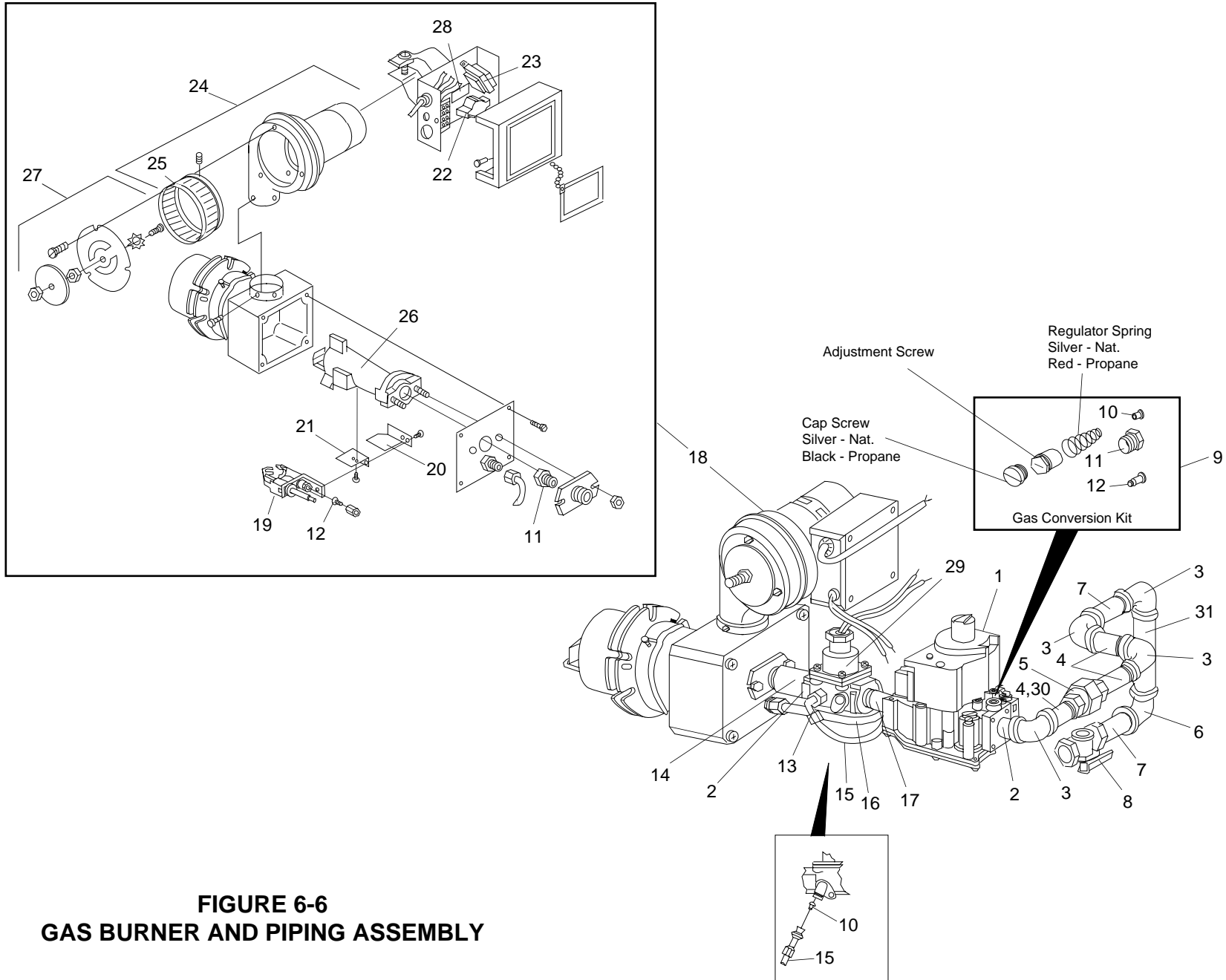
ITEM NO.	QTY.	PART NO.	DESCRIPTION
1	1	22181-0034	BELT, V-NOTCHED
2	1	22230-0073	PULLEY, 60 HZ OVENS, 5/8"B AK32
3	1	37900-0147	WELDMENT, REAR BRG BRACKET SS RED LOB
4	16	220373	BOLT 3/8"-16 x 1-1/2" SS HX
4A	A/R	17110-0017	NEVER SEIZE LUBRICANT - USED ON ITEMS 4 & 10 - APPLIED TO THREADS BEFORE REINSTALLING
5	A/R	21422-0001	SPLIT WASHER 3/8" SS
6	A/R	21416-0001	FLAT WASHER 3/8" SS
7	4	21419-0004	FLAT WASHER 3/8" SS SPECIAL
8	2	22072-0025	BEARING, PILLOW BLOCK 5/8"
10	A/R	21326-0002	BOLT 3/8"-16 x 5-1/2" SS HX
11	1	49400-0155	FLUE VENT
12	A/R	21292-0005	HX HD SCREW 10-16 x 3/4" SS
13	1	30039	WELDMENT, VENT OFFSET SS
14	1	30042	WELDMENT, DOUBLE VENT SS
15	1	37900-0162	COVER - REAR CNTRL PNL, for OVEN W/RIGHT END CONTROL PANEL SS
15	1	37900-0149	COVER - REAR CNTRL PNL, for OVEN W/LEFT END CONTROL PANEL SS
16	1	27470-0035	GUARD - COOLING FAN
17	4	21256-0009	SCREW TRUS CAP - 10-32 x 5/8", SS
18	1	37900-0161	REAR SHROUD, OVEN W/RIGHT END CONTROL PANEL
18	1	37900-0148	REAR SHROUD, OVEN W/LEFT END CONTROL PANEL
19	1	31434	SHROUD, VENT SS, LH & RH
20	2	30410	SHROUD HANGER BRACKET
21	1	22450-0217	RING ORIFICE FAN 16" DIA
22	A/R	35900-0108	STAND-OFF TUBE SS
23	1	35900-0232	SHAFT FAN DRIVE
24	1	21651-0010	KEY, SQ 3/16" X 3/16" 1-1/2" STL
25	1	27399-0003	FAN 16" DIAMETER
26	1	37900-0158	BACK WALL - GAS OVEN ONLY, OVEN W/RIGHT END CONTROL PANEL SS
26	1	37900-0144	BACK WALL - GAS OVEN ONLY, OVEN W/LEFT END CONTROL PANEL SS



**FIGURE 6-5  
CONVEYOR**

Right Hand Drive Oven Shown. All components  
are reversed for Left Hand Drive Oven

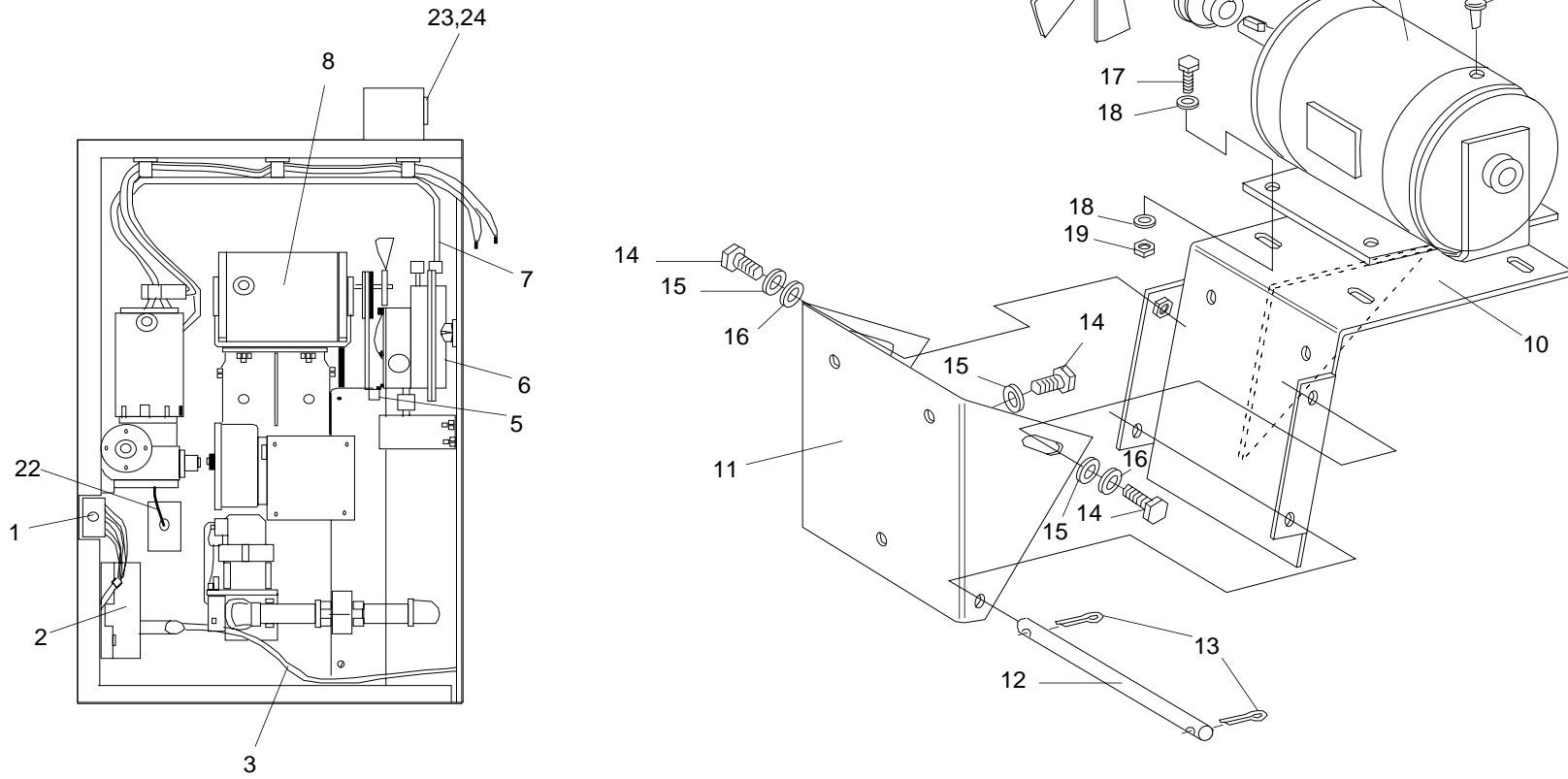
ITEM NO.	QTY.	PS200-R68 PART NO.	PS220FS-R68 PART NO.	PS224-R68 PART NO.	CONVEYOR DESCRIPTION
					CONVEYOR ASSEMBLY W/BELT
					CONVEYOR ASSEMBLY W/BELT
					CONVEYOR BELT WIRE SS, 130"
					MASTER LINK KIT <b>NOTE: MASTER LINK KIT INCLUDES ITEMS 4, 5, AND 6.</b>
					MASTER LINK - RIGHT <b>INCLUDED IN ITEM 4</b>
					MASTER LINK - MIDDLE <b>INCLUDED IN ITEM 4</b>
					MASTER LINK - LEFT <b>INCLUDED IN ITEM 4</b>
					PIVOT PLATE - CONVEYOR FRAME
					LOCKNUT, HEX SS 3/8-20
					CONVEYOR FRAME ASSEMBLY - IDLER
					CONVEYOR FRAME WELDMENT - IDLER
					CONVEYOR ASSEMBLY - IDLER SHAFT
					BUSH, FLANGE 3/4 OD, x 5/8 ID
					BOLT, ADJ. - CONVEYOR IDLER
					IDLER SHAFT ADJUSTMENT BRACKET
					CONVEYOR SHAFT SUPPORT BRACKET
					CONVEYOR SPROCKET 10T W/SCREW
					SOCKET SET SCREW 1/4-28 x 3/8", SS
					IDLER SHAFT
					CONVEYOR FRAME ASSEMBLY - DRIVE
					CONVEYOR FRAME WELDMENT
					CONVEYOR ASSEMBLY - DRIVE SHAFT
					SHAFT COLLAR W/SCREW
					BUSH, FLANGE 3/4 OD x 5/8 ID
					NYLON SPACER
					CONVEYOR SHAFT SUPPORT BRACKET
					CONVEYOR SPROCKET 10T W/SCREW
					SOCKET SET SCREW 1/4-28 x 3/8", SS
					DRIVE SHAFT ADAPTER
					ROLLER CHAIN SPROCKET W/SCREW
					SOCKET SET SCREW 10-32 x 5/16" SS
					DRIVE SHAFT
					DRIVE CHAIN ASSEMBLY - 18" LONG
					MASTER LINK
					SPROCKET, DRIVE MOTOR 15T W/SCREW
					GEAR MOTOR 1/15 HP 1350:1
					BRUSHES - GEAR MOTOR
					HEX NUT 10-32
					SPLIT WASHER #10, SS
					FLAT WASHER #10, SS
					CONVEYOR CONTROL PICKUP KIT
					CONVEYOR END STOP
					CONVEYOR LEFT HAND REAR STOP
					CONVEYOR RIGHT HAND REAR STOP
					CRUMB PAN IDLER END
					CRUMB PAN DRIVE END
					PLUG, HOLE 3/4" SS



**FIGURE 6-6  
GAS BURNER AND PIPING ASSEMBLY**

## GAS BURNER AND PIPING ASSEMBLY

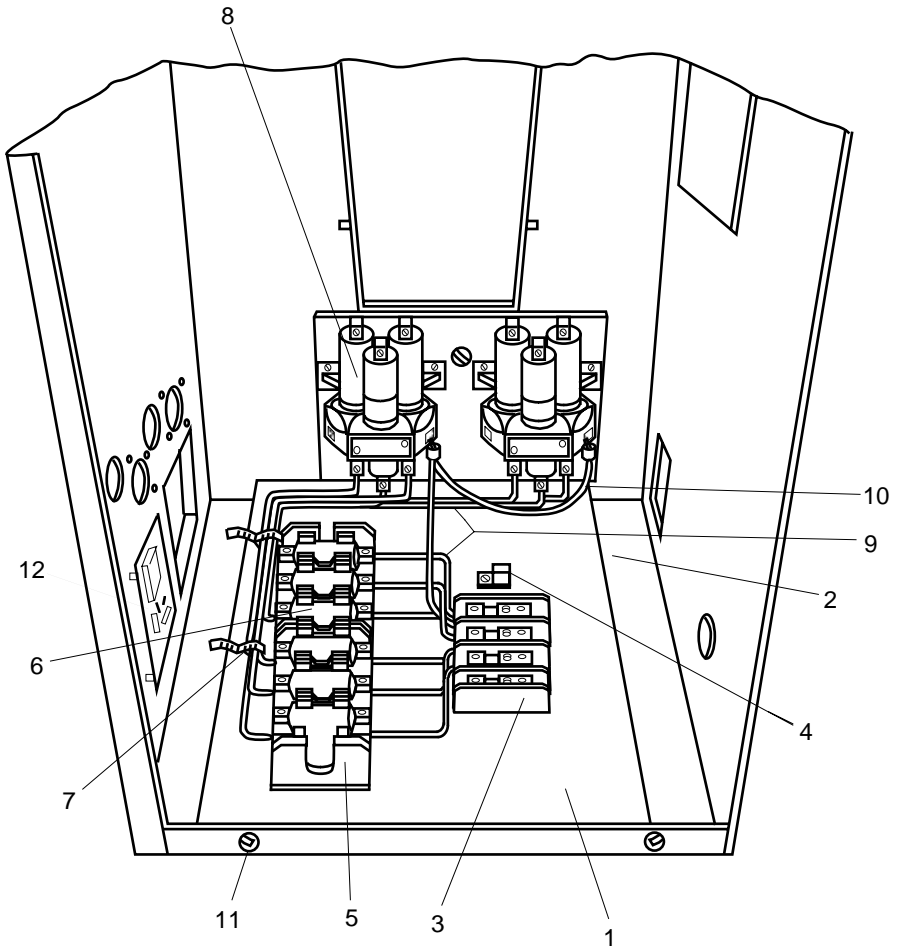
ITEM NO.	QTY.	PART NO.	DESCRIPTION
1	1	42810-0121	1/2" GAS CONTROL VALVE
2	2	23153-0004	1/2" CLOSE NIPPLE - BLK
3	2	23122-0004	1/2" ELBOW - 90°
4	2	23151-0030	1/2" x 2" NIPPLE - BLK
5	1	23051-0003	1/2" PIPE UNION
6	1	23125-0002	1/2" x 3/4" REDUCER ELBOW - 90°
7	1	23151-0001	3/4" x 2-1/2" NIPPLE - BLK
8	1	23115-0010	3/4" MANUAL GAS SHUTOFF VALVE
9	1	42810-0123	NATURAL TO PROPANE CONVERSION KIT, PS220-R68 & PS224-R68
9	1	42810-0126	PROPANE TO NATURAL CONVERSION KIT, PS220-R68 & PS224-R68
9	1	42810-0122	NATURAL TO PROPANE CONVERSION KIT, PS200-R68
9	1	42810-0125	PROPANE TO NATURAL CONVERSION KIT, PS200-R68
10	1	22174-0006	ORIFICE #53 DRILL LOW FLAME - NATURAL
10	1	22174-0009	ORIFICE #62 DRILL LOW FLAME - PROPANE
11	1	22176-0016	ORIFICE, MAIN BURNER - NATURAL (0.182"), PS220-R68 & PS224-R68
11	1	22176-0017	ORIFICE, MAIN BURNER - PROPANE (0.113"), PS220-R68 & PS224-R68
11	1	22176-0006	ORIFICE, MAIN BURNER - NATURAL (0.196"), PS200-R68
11	1	22176-0007	ORIFICE, MAIN BURNER - PROPANE (0.129"), PS200-R68
12	1	22174-0011	ORIFICE, PILOT - NATURAL (.024")
12	1	22174-0010	ORIFICE, PILOT - PROPANE (.014")
13	2	23126-0016	ELBOW - MALE 1/4" TUBE x 1/8" NPT
14	1	23015-0004	1/2" COUPLING NPT
15	1	35900-0098	1/4" TUBING - ALUM 8"
16	1	35900-0099	1/4" TUBING - ALUM 6-1/2"
17	1	23151-0030	1/2" x 2" NIPPLE - BLK
18	1	27361-0015	GAS BURNER ASSEMBLY
19	1	27363-0002	PILOT ASSEMBLY W/IGNITOR
20	1	27170-0204	PILOT SHIELD
21	1	27170-0264	PILOT IGNITOR BRACKET
22	1	27170-0016	MOTOR RELAY
23	1	27170-0017	TRANSFORMER 120/240V
24	1	27170-0011	BLOWER MOTOR ASSEMBLY
25	1		BLOWER WHEEL, INCLUDED IN ITEM #24
26	1	27170-0223	VENTURI W/TARGET
27	1	42810-0087	AIR SHUTTER KIT
28	1	27030-0005	FUSE HOLDER WITH FUSE (1 AGC)
29	1	28091-0017	1/2" SOLENOID VALVE
30	1	23151-0032	1/2" x 3" NIPPLE - BLK, R.H. DRIVE ONLY
31	1	31315	1/2" x 31" PIPE, UPPER OVEN ONLY
31	1	31238	1/2" x 4" PIPE, LOWER OVEN ONLY



**FIGURE 6-7**  
**MACHINERY COMPARTMENT**

**MACHINERY COMPARTMENT**

ITEM NO.	QTY.	PART NO.	MODEL	DESCRIPTION
1	1	28021-0047	GAS & ELECTRIC	SAFETY INTERLOCK SWITCH
2	1	42810-0114	GAS	IGNITION CONTROL MODULE
3	1	27159-0019	GAS	IGNITION/SENSOR WIRE
5	1	28021-0061	GAS & ELECTRIC	SAFETY, MOMENTARY, 10A NO 2 POLE
6	1	28023-0005	GAS & ELECTRIC	AIR SWITCH
7	1	35900-0105	GAS & ELECTRIC	TUBING 1/4" x 45-1/8"
8	1	27381-0066	GAS & ELECTRIC	MOTOR 1/3 HP 200-240V 1PH
9	1	27221-0015	GAS & ELECTRIC	SNAP - IN BUSHING - NYLON, BLACK
10	1	37900-0005	GAS & ELECTRIC	MOUNTING BRACKET - MOTOR
11	1	35900-0076	GAS 7 ELECTRIC	SUPPORT BRACKET - MOTOR
12	1	35900-0075	GAS & ELECTRIC	ROD - MOTOR BRACKET
13	2	21611-0007	GAS & ELECTRIC	COTTER PIN 1/8" X 1/2"
14	3	220373	GAS & ELECTRIC	BOLT 3/8"-16 x 1 SS HX
15	3	21426-0001	GAS & ELECTRIC	3/8" SPLIT WASHER
16	2	21416-0001	GAS & ELECTRIC	3/8" FLAT WASHER SS
17	4	A3896	GAS & ELECTRIC	HEX HD SCREW 5/16-18 x 1" SS
18	8	21416-0002	GAS & ELECTRIC	FLAT WASHER 5/16"
19	4	21126-0004	GAS & ELECTRIC	HEX NUT SS 5/16-18
20	1	22230-0073	GAS & ELECTRIC	PULLEY, 5/8 BORE AK32
20	1	22230-0074	GAS & ELECTRIC	PULLEY, 50Hz - EXPORT ONLY AK.41
21	1	27399-0007	GAS & ELECTRIC	COOLING FAN - 5/8" BORE
22	1	48019-0027	GAS & ELECTRIC	THERMOCOUPLE TYPE J - GAS OVEN
23	1	32342	GAS & ELECTRIC	MACH. COMPARTMENT RECEPTACLE ASSY AC
24	1	32343	GAS & ELECTRIC	MACH. COMPARTMENT RECEPTACLE ASSY DC



**FIGURE 6-8**  
**ELECTRIC OVEN ELECTRIC PANEL**



## ELECTRIC OVEN ELECTRIC PANEL

ITEM NO.	QTY.	PART NO.	DESCRIPTION
1	1	37900-0097	ELECTRIC PANEL W/O COMPONENTS
2	1	37900-0096	BRACKET - ELECTRIC PANEL
3	2	27480-0001	POWER DISTRIBUTION BLOCK - 2 POLE
4	1	15028707	GROUND LUG
5	2	27021-0016	FUSE BLOCK - 3 POLE, 60 AMP, 600V, CLASS T
6	6	28150-0130	FUSE - 50 AMP, 600V, CLASS T
7	A/R	27276-0003	CABLE CLAMP
8	A/R	28041-0015	MERCURY CONTACTOR 3 POLE
8	A/R	27170-0247	CONTACTOR TUBE KIT W/CLIP FOR P/N 28041-0015
8	1	42810-0090	CONTACTOR COIL KIT (INCLUDES COIL & 3 RETAINER CLIPS)
9	A/R	27152-0025	WIRE STRAND 10 GA 105° C. BL.
10	A/R	27152-0053	WIRE STRAND 18 GA 105° C. BL.
11	3	21256-0008	10-32-3/8 TRUSS HD. SS
12	1	28071-0025	HI/LO LIMIT BOARD



## JUNCTION BOX AND EXPORT TRANSFORMER

ITEM NO.	QTY.	PART NO.	DESCRIPTION
1	1	28082-0010	TRANSFORMER .75 KVA 240-480V EXPORT ONLY
1	1	28082-0011	TRANSFORMER 1.0 KVA 190-380V EXPORT ONLY
2	2	27083-0008	BOX CONNECTOR 1/2" x 50°
3	1	35900-0147	CONDUIT 1/2" x 6"
4	1	27292-0009	JUNCTION BOX 4" x 4"
5	2	A3333	BOLT 1/4"-20 x 3/4" SS
6	2	21426-0002	SPLIT WASHER 1/4" SS
7	1	27011-0010	TERMINAL BLOCK - 30 AMP 600V, 4 POLE
7	1	27011-0011	TERMINAL BLOCK - 30 AMP 600V, 8 POLE
Not Shown		42810-0086	TRANSFORMER KIT FOR 110V SUPPLY
Not Shown		28082-0016	2.0 KVA - USED WITH TRANSFORMER KIT # 42810-0086 110 - 220V.

**NOTES**