

# ***Parts Manual***

***with Wiring Diagrams***  
***for domestic and standard export ovens***

Serial # Code

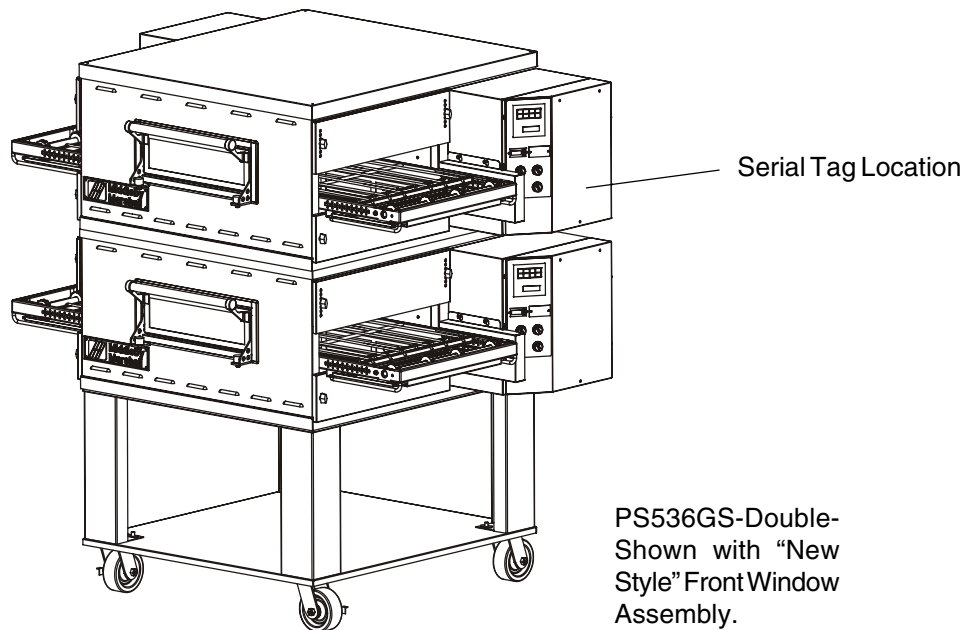
First 4 digits - order of production

Fifth digit - model specific

Sixth and Seventh digit - month of production

Eighth and Ninth digit - year of production

Starting Serial # 145740103 & after



## **Table of Contents: Page 2**



[www.middleby.com](http://www.middleby.com)

email: [techsupport@middleby.com](mailto:techsupport@middleby.com)

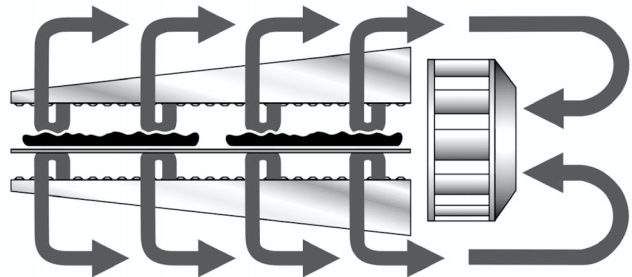
## Table of Contents

Spec Sheet .....	3
Key Parts .....	7
View of Installation Kit .....	8
Parts for Installation Kit.....	9
View of Panels, End Plugs and Window–Earlier Production .....	10
Parts for Panels, End Plugs and Window–Earlier Production ...	11
View of Panels, End Plugs and Window–Later Production .....	12
Parts for Panels, End Plugs and Window–Later Production .....	13
View of Right-hand Electrical Compartment .....	14
Parts for Right-hand Electrical Compartment .....	15
View of Left-hand Electrical & Gas Train Compartment.....	16
Parts for Left-hand Electrical & Gas Train Compartment .....	17
View of Rear Compartment and Blowers .....	18
Parts for Rear Compartment and Blowers.....	19
View of Single-Belt Conveyor .....	20
Parts for Single-Belt Conveyor .....	21
View of Split-Belt Conveyor .....	22
Parts for Split-Belt Conveyor .....	23
Standard Finger Placement and Part Numbers .....	24
Wiring Diagrams (electrical schematics)	
208;240 volt 50/60 Hz, 1 Phase	
ENG/GM/FR/SP 55553B .....	25
208;240 volt 50/60 Hz, 1 Phase	
IT/GR/DN/DU 55551B .....	26



### Principle

Middleby Marshall PS Series conveyor ovens bake both faster and at a lower temperature than other ovens. Patented vertical columns of hot air move heat aerodynamically instead of using high temperatures. The streams of hot air remove the boundary layers of cool heavy air which tend to insulate the product. This gives very rapid baking without burning. All Middleby ovens are designed to cook a multitude of products including pizza, seafood, bagels, ethnic foods and more.



### General Information

The PS536GS conveyor oven is ideally suited for Kiosk and express-style locations where smaller ovens are required.

#### Standard Features

- Impingement PLUS! low oven profile and dual air return
- EMS Energy Management System\* reduces gas consumption and increases cooking efficiency
- 36"/914mm long cooking chamber
- 20"/508mm-wide, 60"/1524mm long conveyor belt
- Stackable up to three units high
- Patented "Jet Sweep" impingement process that delivers constant heat to the chamber
- Microprocessor-controlled bake time/conveyor speed
- Customer-specific adjustable jet fingers that allow control of heating in 8"/203mm zones
- Stainless steel front, sides, top and interior
- Enclosed front-loading window with cool handle
- Reversible conveyor direction
- Lower shelf single and double deck
- 3-30 minute bake time
- 8" Exit tray- 60" conveyor model
- Maximum operating temperature-550°F (288°C)
- Warmup time-25 minutes

#### Optional Features

- Split belt - two 9-1/2"/241mm belts with individually-adjustable speed settings
- High speed conveyor (1-10 minute bake time)
- 76"/1930mm-long conveyor

### Conserves Energy

Middleby ovens provide very efficient heat transfer to product. Energy is conserved as air is recycled from heater to product, with minimum flue or vent loss.

### Cleanability

PS536GS ovens are designed for easy cleaning. Removable parts include: crumb pans, end panels, air fingers, exit tray, and a removable conveyor belt assembly.

### Easily Serviced

Control compartment is designed for quick and easy access.

### Warranty

All PS536GS models have a one year parts and labor warranty. Oven start-up is included at no additional charge (USA only).

\* Patent pending



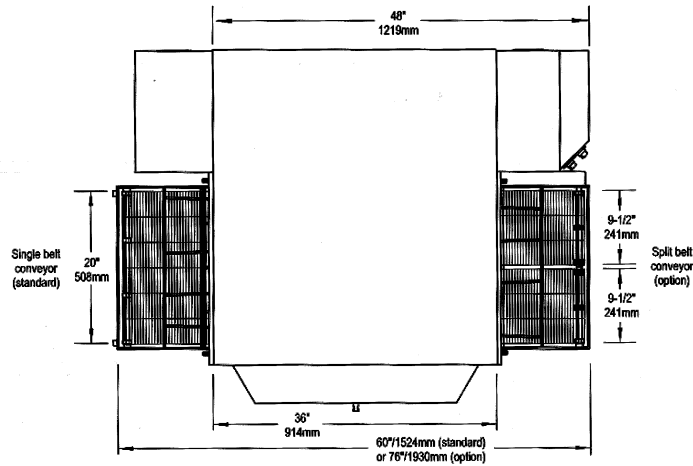
**PS536GS  
Direct Gas Fired Conveyor Oven**

Scale: Approx. 1/24 (1/2"/13mm = 1/305mm)

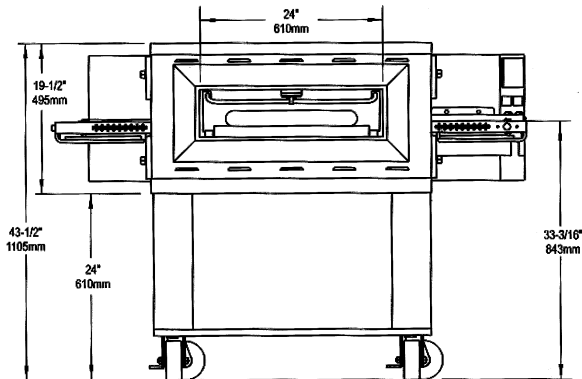
*NOTE: Height dimensions are shown for standard leg extensions. Customer-specific leg extensions will affect these dimensions.*

*NOTE: All units are shown with casters. CE-approved ovens use 6"/152mm adjustable feet instead of casters.*

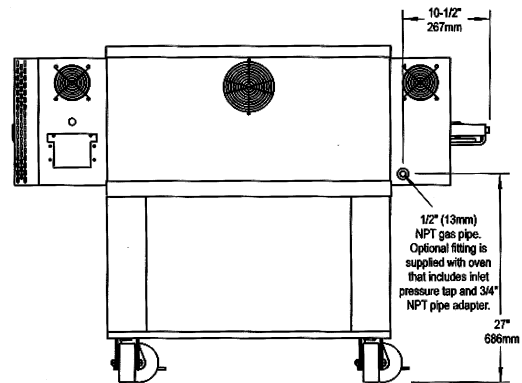
**PS536GS-1**



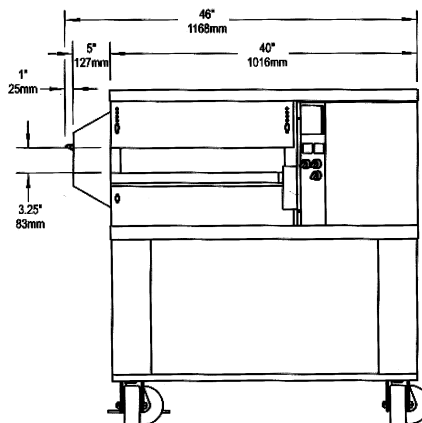
**TOP VIEW**



**FRONT VIEW**



**BACK VIEW**



**SIDE VIEW**

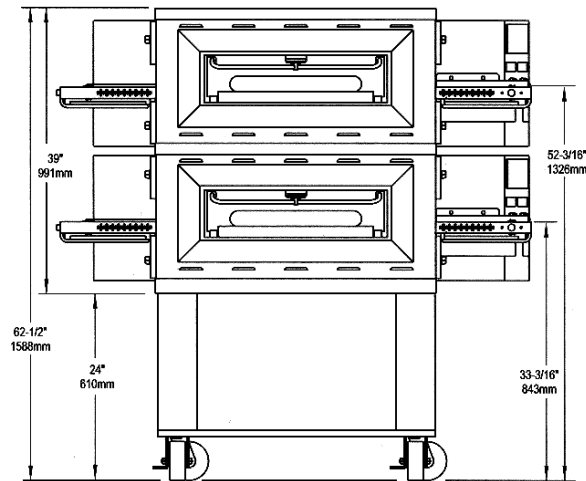
## PS536GS Direct Gas Fired Conveyor Oven

Scale: Approx. 1/24 (1/2"/13mm = 1"/305mm)

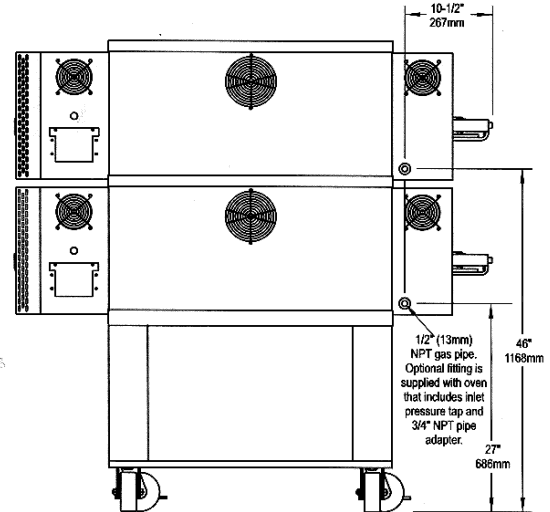
*NOTE: Height dimensions are shown for standard leg extensions. Customer-specific leg extensions will affect these dimensions.*

*NOTE: All units are shown with casters. CE-approved ovens use 6"/152mm adjustable feet instead of casters.*

### PS536GS-2

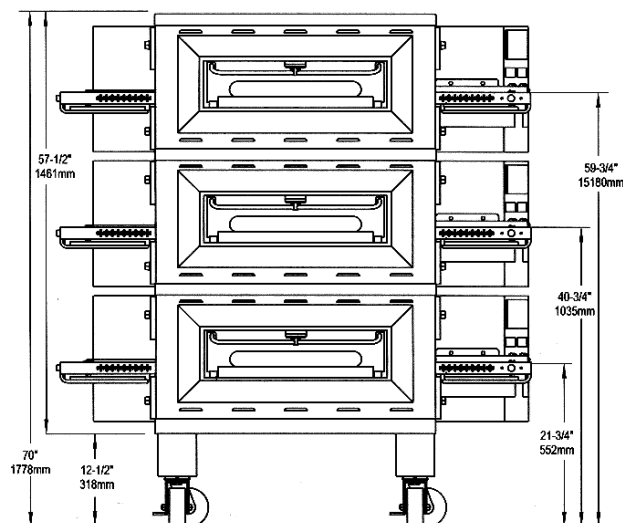


**FRONT VIEW**

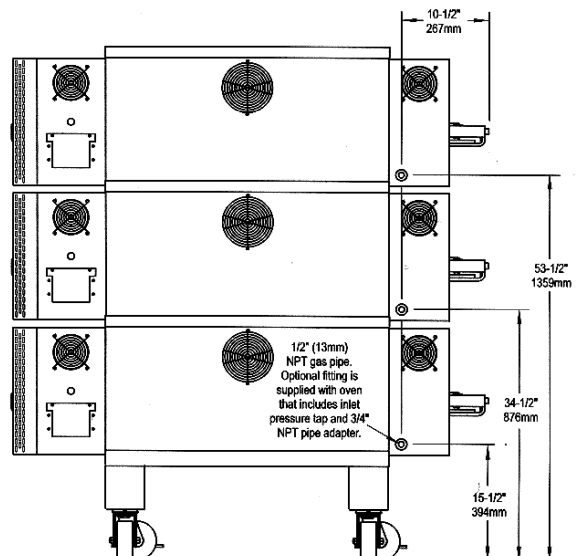


**BACK VIEW**

### PS536GS-3



**FRONT VIEW**



**BACK VIEW**

**RECOMMENDED MINIMUM CLEARANCES**

Rear of oven to wall	Control end of conveyor to wall	Non-control end of conveyor to wall
3" (76mm)	18" (457mm)	3" (76mm)

**GENERAL INFORMATION**

	Heating Zone	Baking Area	Belt Length	Belt Width	Overall Length (exit tray not installed)	Height	Depth	Maximum Operating Temp.	Bake Time Range	Ship Wt.	Ship Cube
PS536-1 with 17.5" (446mm) leg extensions	36" 914mm	5 sq. ft. 0.465m <sup>2</sup>	60" 1524mm OR 76" 1930mm	1 x 20" (508mm) OR 2 x 9-1/2" (241mm)	60" 1524mm OR 76" 1930mm	43-1/2" * 1105mm	43" 1092mm	550°F 288°C	2:40- 29:50	658 lbs. 299kg	35.2 ft. <sup>3</sup> 0.99m <sup>3</sup>
PS536-2 with 17.5" (446mm) leg extensions	72" 1828mm	10 sq. ft. 0.930m <sup>2</sup>	60" 1524mm OR 76" 1930mm	1 x 20" (508mm) OR 2 x 9-1/2" (241mm)	60" 1524mm OR 76" 1930mm	63" * 1600mm	43" 1092mm	550°F 288°C	2:40- 29:50	1255 lbs. 570kg	70.4 ft. <sup>3</sup> 1.97m <sup>3</sup>
PS536-3 with 6" (152mm) leg extensions	108" 2743mm	15 sq. ft. 1.395m <sup>2</sup>	60" 1524mm OR 76" 1930mm	1 x 20" (508mm) OR 2 x 9-1/2" (241mm)	60" 1524mm OR 76" 1930mm	71" * 1803mm	43" 1092mm	550°F 288°C	2:40- 29:50	2449 lbs. 1112kg	105.6 ft. <sup>3</sup> 2.96m <sup>3</sup>

\* Overall height is shown for standard leg extensions. Customer-specific leg extensions will affect the overall height of the oven.

**ELECTRICAL SPECIFICATIONS**

Version	Voltage	Phase	Freq.	Current Draw *	Supply	Breakers
Domestic & std. export	208/240V	1	50/60 Hz	6A	2 pole, 3 wire (2 hot, 1 ground)	As per local codes

\* The current draw rating shown above is an average value for normal operation. The initial amperage draw on oven startup may exceed the listed value.

**GAS SUPPLY SPECIFICATIONS**

Version	Gas Type	Supply (Inlet) Pressure	Regulated Pressure	Rated Heat Input
Domestic & std. export	Natural Gas	6-12" W.C. (14.9-29.9mbar)	4" W.C. (9.95mbar)	76,000 BTU (14.6 kW-hr.)
Domestic & std. export	Propane Gas	11-14" W.C. (27.4-34.9mbar)	10.5" W.C. (26.15mbar)	76,000 BTU (13.2 kW-hr.)

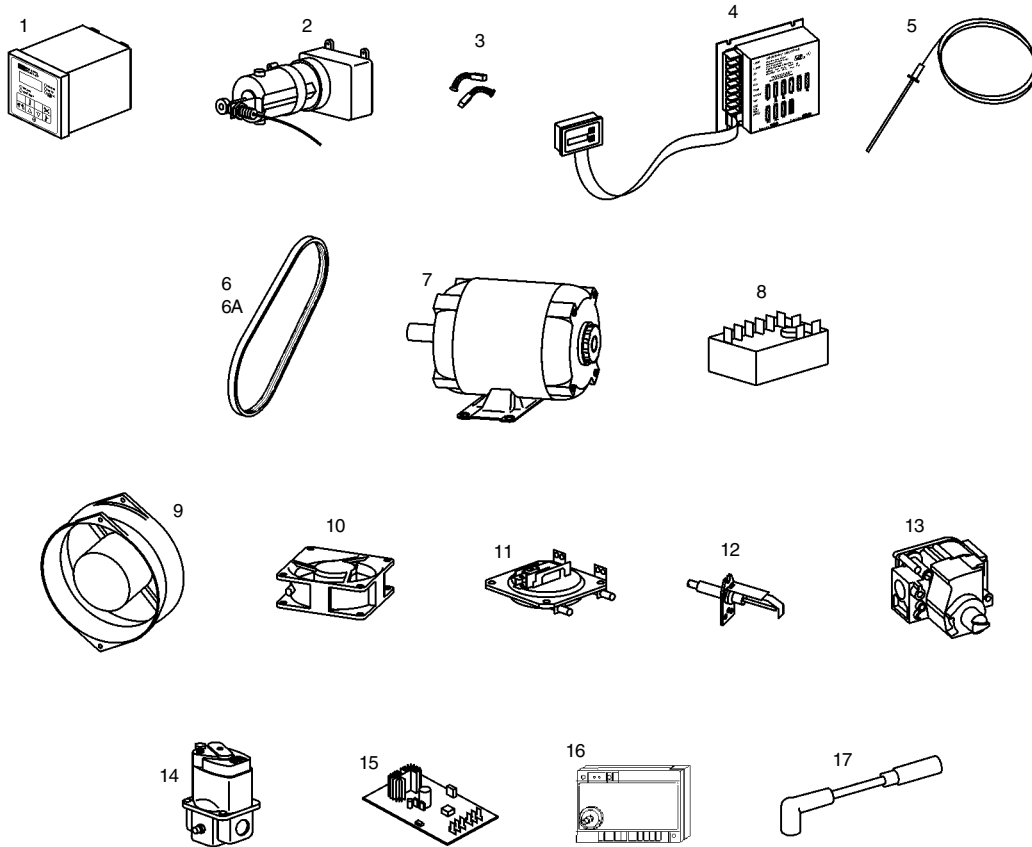
The required gas supply pressures of other locations are dependent on the local gas type and on all applicable local codes.

**Minimum Gas Pipe Sizes:**

- Natural Gas - 2" (51mm) main supply line. One 1/2" (12.7mm) NPT branch per oven cavity with individual full-flow shutoff valve.
- Propane Gas - 1-1/2" (38mm) main supply line. One 1/2" (12.7mm) NPT branch per oven cavity with individual full-flow shutoff valve.

**ALL SPECIFICATIONS SUBJECT TO CHANGE WITHOUT NOTICE.**

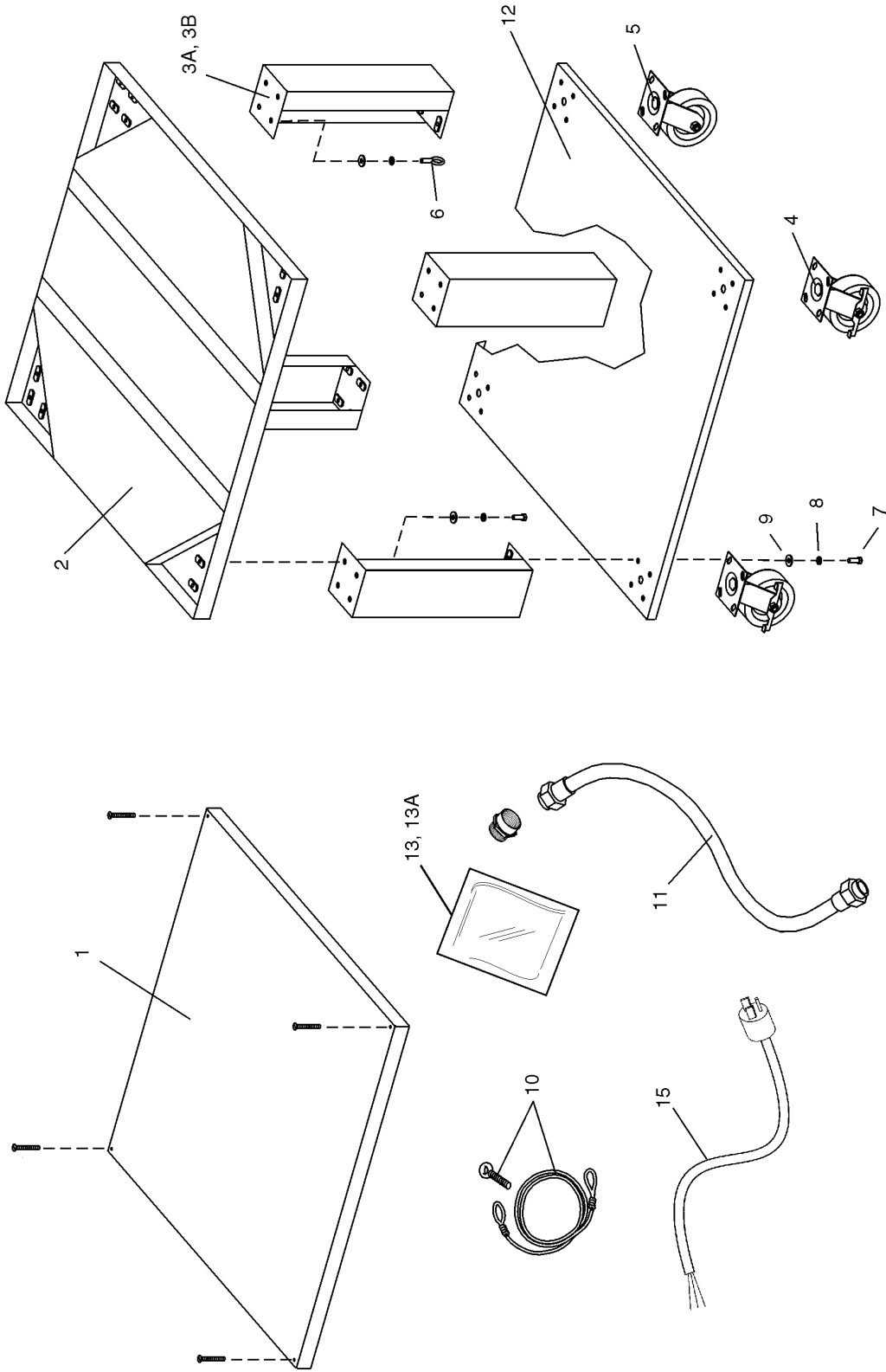
## KEY PARTS



## KEY PARTS

ITEM	QTY.	P/N	DESCRIPTION
1	1	47321	DIGITAL TEMPERATURE CONTROLLER
2	1	58390	CONVEYOR DRIVE MOTOR W/MAGNET
3	1	58484	KIT, 2-BRUSHES AND 2-CAPS
4	1	37337	KIT, CONVEYOR SPEED CONTROLER
5	1	33984	KIT, THERMOCOUPLE 6"
6	1	50517	BELT, BLOWER, STANDARD RPM
6A	1	51428	BELT, BLOWER, LOWER RPM
7	1	44687	MOTOR, BLOWER, 208/230V, 1/2HP
8	1	33983	HIGH LIMIT CONTROL MODULE, 240V
9	1	36451	COOLING FAN (BACKWALL)
10	1	97525	COOLING FAN (CONTROL COMPARTMENT)
11	1	54953	AIR SWITCH (REPLACES 37498)
12	1	48455	IGNITOR
13	1	52291	COMBINATION GAS CONTROL VALVE (SAFETY REGULATOR)
14	1	41647	MODULATING GAS VALVE, M420, 1/2"
15	1	31651	AMPLIFIER BOARD
16	1	50239	IGNITION MODULE
17	1	50240	IGNITION CABLE, 25"

# View of INSTALLATION KIT

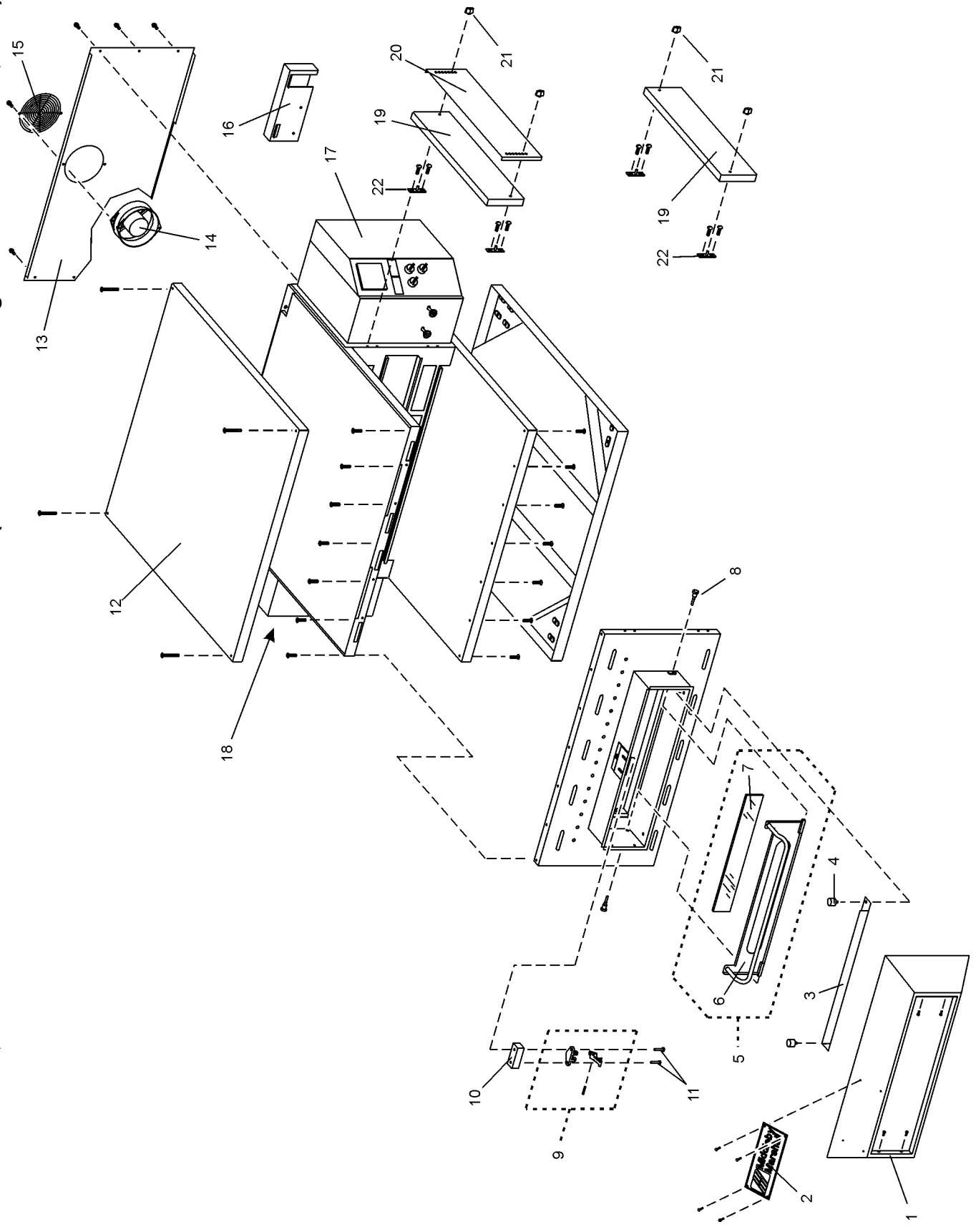




## Parts for INSTALLATION KIT

ITEM	QTY.		P/N	DESCRIPTION
	SINGLE OVEN	DOUBLE OVEN		
1	1	1	48605	TOP PANEL
2	1	1	51977	BASEPAD, W/INSULATION
3A	4	4	42890	17-1/2" (445mm) LEG EXTENSION, FOR SINGLE AND DOUBLE OVENS
3B	--	--	44799	6" (152mm) LEG EXTENSION, FOR TRIPLE OVENS
4	2	2	22290-0009	CASTER, WITH FLAT PLATE AND BRAKE
5	2	2	22290-0010	CASTER, WITH FLAT PLATE (NO BRAKE)
6	1	1	21392-0004	EYEBOLT, 3/4"
7	31	31	220373	HEX BOLT, 3/8"-16 x 1"
8	32	32	21416-0001	FLAT WASHER, 3/8"
9	32	32	21422-0001	LOCKWASHER, 3/8"
10	1	1	22450-0228	RESTRAINT CABLE ASSEMBLY
11	1	2	22361-0001	GAS HOSE, 3/4" to 1/2" Gas hose reducer included with gas hose.
12	1	1	46393	LOWER SHELF - (LIP DOWN POSITION)
13	1	2	50276	KIT, LP - (NATURAL GAS TO LP)
13A	1	2	50793	KIT, NATURAL GAS - (LP TO NATURAL GAS)
14	1	2	M2841	FITTING, PRESSURE TAP (NOT SHOWN)
15	1	2	49975	TWIST LOCK PLUG (6-20P) - WITH 6 FOOT CORD

View of PANELS, END PLUGS and WINDOW - Earlier Production - Earlier Production (Front Window Change Used Before March, 2004)



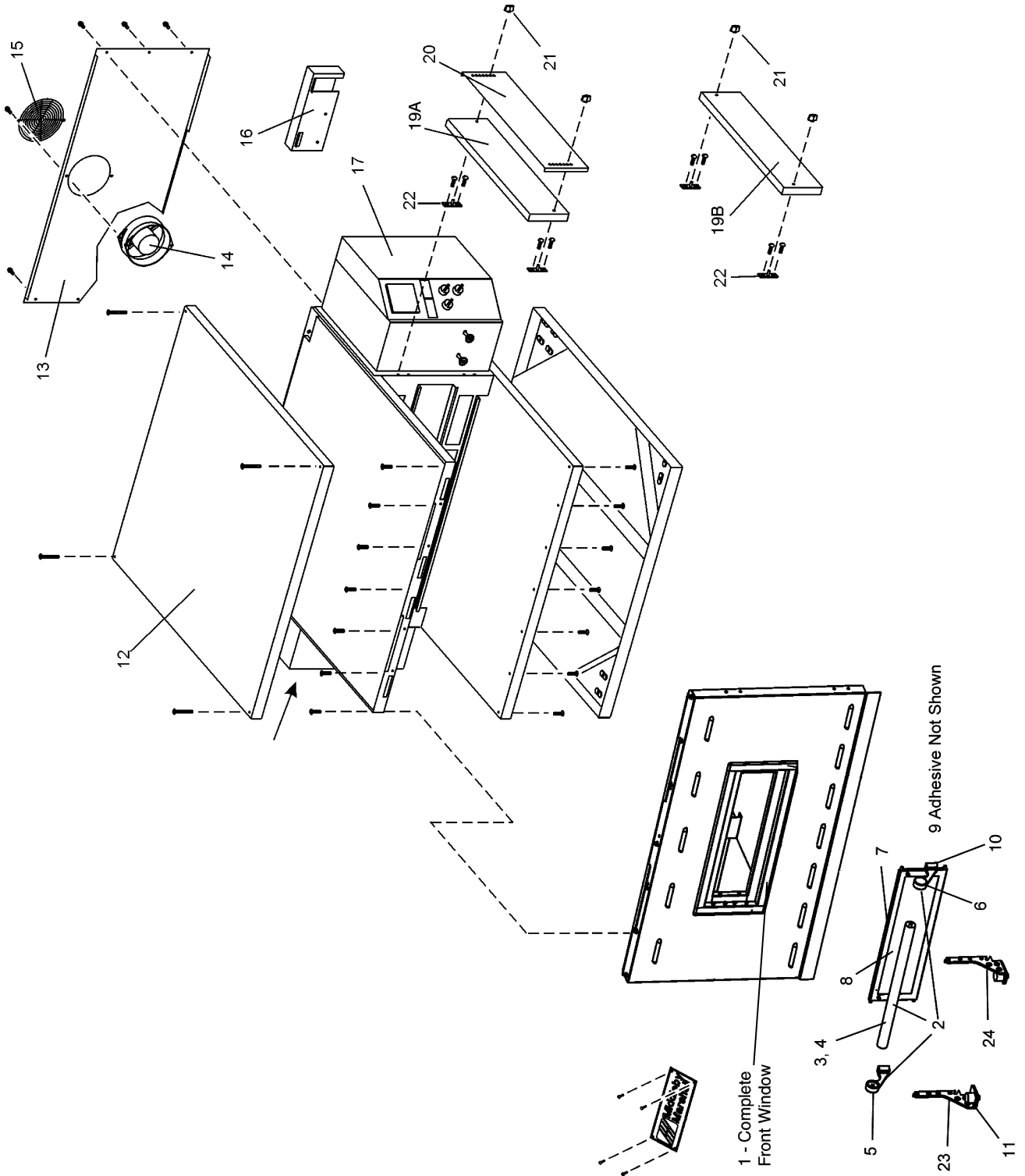
**PANELS, END PLUGS and WINDOW-Earlier Production (Front Window Change Used Before March, 2004)**

<b>ITEM QTY.</b>	<b>P/N</b>	<b>DESCRIPTION</b>	<b>ITEM QTY.</b>	<b>P/N</b>	<b>DESCRIPTION</b>
1	50172	WINDOW SHROUD	13	47633	BACK WALL
2	22500-0021	NAMEPLATE, "MIDDLEBY/MARSHALL"	14	36451	COOLING FAN
3	48437	HEAT GUARD PLATE	15	31497	FINGER GUARD, COOLING FAN
4	30927	BUMPER	16	See pp. 20-23	CHAIN COVER, UPPER
5	48512	ASSEMBLY, WINDOW (INC. ITEMS 6-7)	17	49938	DOOR, CONTROL COMPARTMENT-FOR OVENS WITH RIGHT-SIDE CONTROLS
6	47611	WINDOW FRAME WITH HANDLE	18	48687	DOOR, MACHINERY COMPARTMENT-FOR LEFT-SIDE
7	47837	WINDOW GLASS, PRE-CUT, 2.59" X 18"	19a	43252	END PLUG, TOP
8	34121-0003	PIVOT SCREW	19b	43252	END PLUG, BOTTOM
9	49920	WINDOW LATCH ASSEMBLY	20	42771	SLIDE, OUTER SIDE
10	49921	SPACER BLOCK	21	36452	WING NUT, PLASTIC
11	18A1S19	SCREW, HEX HD 1/4"-20 X 1"	22	45449	BRACKET, END PLUG MOUNTING
12	48605	TOP PANEL			

**PANELS, END PLUGS WITHOUT WINDOW-Earlier Production**

<b>ITEM QTY.</b>	<b>P/N</b>	<b>DESCRIPTION</b>	<b>ITEM QTY.</b>	<b>P/N</b>	<b>DESCRIPTION</b>
2	22500-0021	NAMEPLATE, "MIDDLEBY/MARSHALL"	17b	Not available	DOOR, CONTROL COMPARTMENT-FOR OVENS WITH LEFT-SIDE CONTROLS
11	18A1S19	SCREW, HEX HD 1/4"-20 X 1"	18a	48687	DOOR, MACHINERY COMPARTMENT-FOR OVENS WITH RIGHT-SIDE CONTROLS
12	48605	TOP PANEL	18b	Not available	DOOR, MACHINERY COMPARTMENT-FOR OVENS WITH LEFT-SIDE CONTROLS
13	47633	BACK WALL	19a	43252	END PLUG, TOP
14	36451	COOLING FAN	19b	43252	END PLUG, BOTTOM
15	31497	FINGER GUARD, COOLING FAN	20	42771	SLIDE, OUTER SIDE
16	See pp. 20-23	CHAIN COVER, UPPER	21	36452	WING NUT, PLASTIC
17a	49938	DOOR, CONTROL COMPARTMENT-FOR OVENS WITH RIGHT-SIDE CONTROLS	22	45449	BRACKET, END PLUG MOUNTING

View of PANELS, END PLUGS and WINDOW—Later Production (Front Window Change Used After March, 2004)

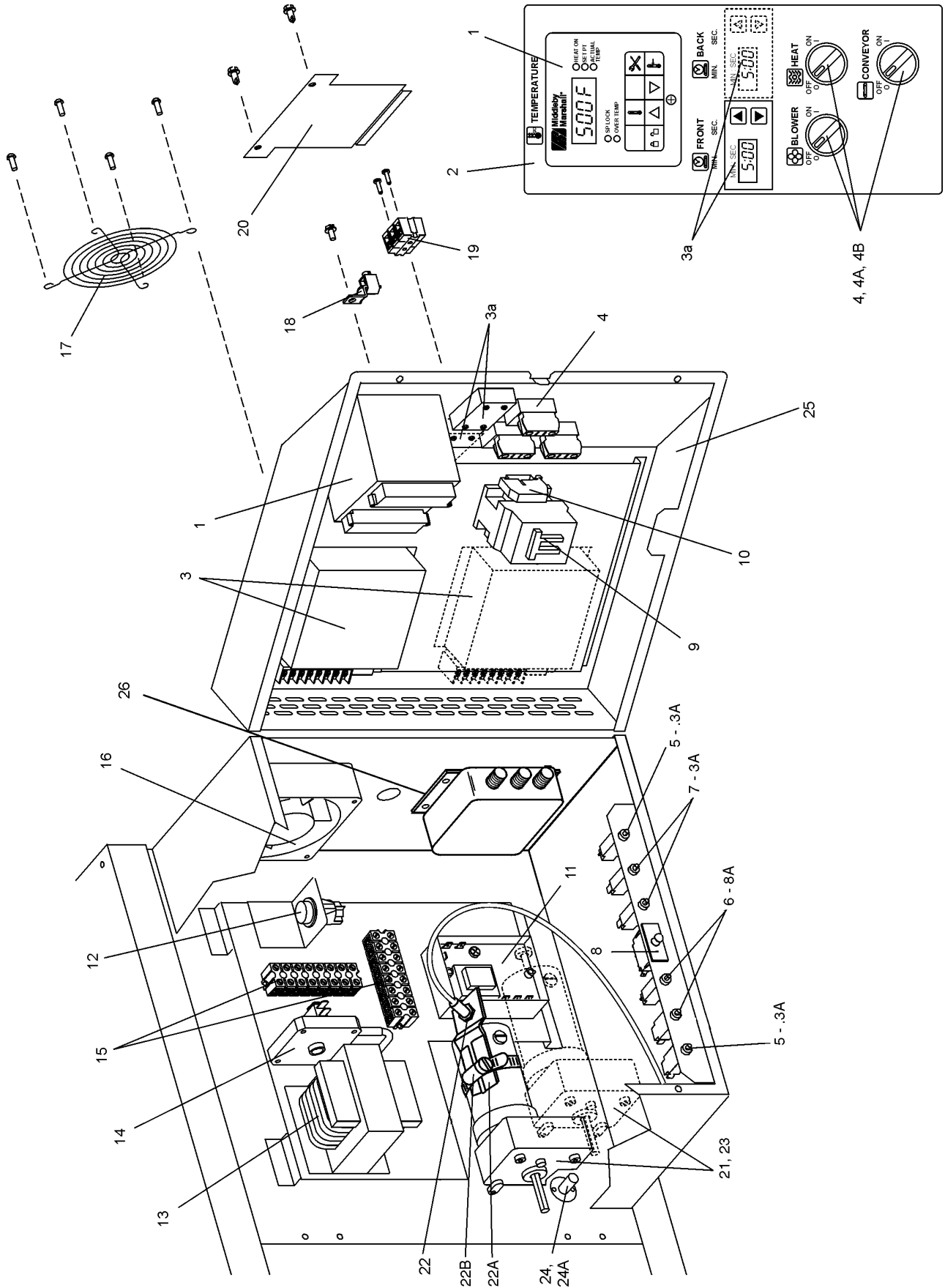


**PANELS, END PLUGS and WINDOW-Later Production (Front Window Change Used After March, 2004)**

<b>ITEM QTY.</b>	<b>P/N</b>	<b>DESCRIPTION</b>
1	51054	ASSEMBLY, WINDOW, w/HANDLE, ITEMS 1-10
2	51081	ASSEMBLY, HANDLE, ITEMS 3-6
3	M10092	HANDLE, OUTER
4	M10127	HANDLE, INNER THREADED
5	M1115	HANDLE, BRACKET (LEFT)
6	M1116	HANDLE, BRACKET (RIGHT)
7	51087	FRAME AND WINDOW, ITEMS 8-9
8	M10198	GLASS, 4.1" X 15.150"
9	M1965	ADHESIVE (NOT SHOWN)
10	M1118	SCREW-ATTACHES HANDLE
11	30927	BUMPER
12	48605	TOP PANEL

<b>ITEM QTY.</b>	<b>P/N</b>	<b>DESCRIPTION</b>
13	47633	BACK WALL
14	36451	COOLING FAN
15	31497	FINGER GUARD, COOLING FAN
16	See pp. 20-23	CHAIN COVER, UPPER
17	49938	DOOR, CONTROL COMPARTMENT-FOR OVENS WITH RIGHT-SIDE CONTROLS
19A	50161	END PLUG, TOP
19B	48622	END PLUG, BOTTOM
20	42771	SLIDE, OUTER SIDE
21	36452	WING NUT, PLASTIC
22	48640	BRACKET, END PLUG MOUNTING
23	51210	BRACKET, WINDOW HINGE (LEFT)
24	51211	BRACKET, WINDOW HINGE (RIGHT)

# View of Right-hand Electrical Compartment

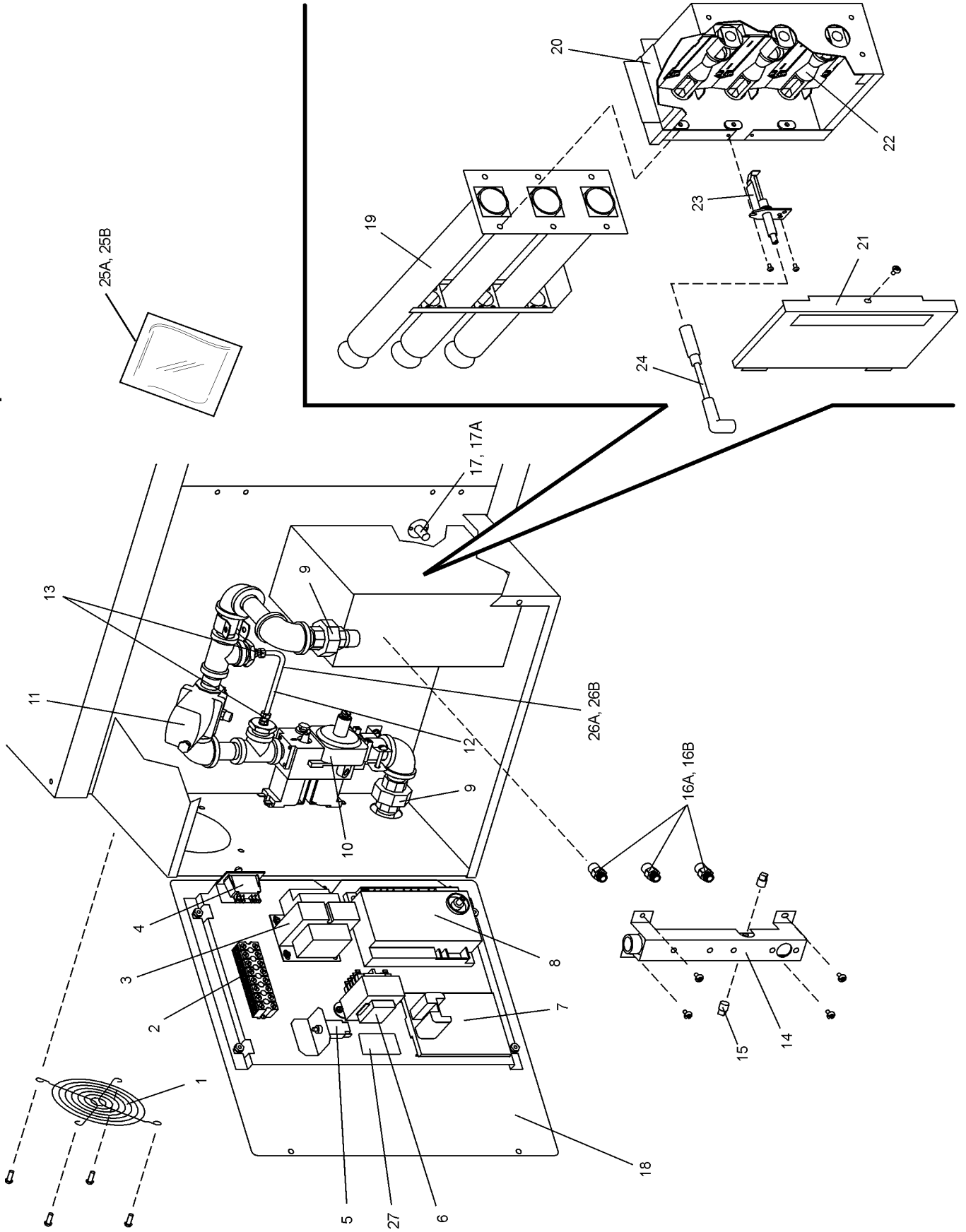


## Parts for Right-hand Electrical Compartment

ITEM	QTY. SINGLE BELT	QTY. SPLIT BELT	P/N	DESCRIPTION
1	1	1	47321	DIGITAL TEMPERATURE CONTROLLER
2	1	1	48511	DECAL, CONTROL PANEL
3	1	2	37337	KIT, CONVEYOR SPEED CONTROLLER WITH DIGITAL DISPLAY (INC. ITEM 3A)
3A	1	2	37503	DIGITAL DISPLAY ONLY
4	3	3	46521	KIT, SELECTOR SWITCH WITH KNOB AND CONTACT BLOCK
4A	3	3	44697	CONTACT BLOCK
4B	3	3	44696	SELECTOR SWITCH
5	1	2	48635	CIRCUIT BREAKER, 0.3A (DRIVE MOTORS)
6	2	2	46831	CIRCUIT BREAKER, 8A (BLOWER MOTORS)
7	2	2	45036	CIRCUIT BREAKER, 3A (CONTROL CIRCUIT)
8	1	1	28021-0047	SAFETY SWITCH
9	1	1	28041-0011	CONTACTOR
10	2	2	33363	END STOP, CONTACTOR
11	1	1	33983	HIGH LIMIT CONTROL MODULE, 240V
12	1	1	35145	RESET SWITCH, HIGH LIMIT
13	1	1	31504	TRANSFORMER, 230V PRI : 120V SEC, 200VA
14	1	1	54953	AIR SWITCH (REPLACES 37498)
15	2	2	31047	TERMINAL BLOCK, 8-POLE USED ON EARLIER VERSION)

ITEM	QTY. SINGLE BELT	QTY. SPLIT BELT	P/N	DESCRIPTION
16	1	1	97525	COOLING FAN, 230V
17	1	1	27470-0004	FINGER GUARD, COOLING FAN
18	1	1	F716A8701	GROUND LUG
19	1	1	44390	TERMINAL BLOCK, 3-POLE
20	1	1	49977	COVER PLATE, TERMINAL BLOCK ACCESS
21	1	2	51067	ASSEMBLY-MOTOR, CONVEYOR DRIVE WITH SENSOR
22	1	2	22450-0249	SENSOR PICKUP
22A	1	2	22450-0248	BRACKET-PICKUP SENSOR
22B	1	2	220416	CLAMP-SECURES BRACKET
23	1	2	58390	MOTOR, CONVEYOR DRIVE WITH 2-POLE MAGNET
23A	1	2	39002	MAGNET 2-POLE
23B	1	2	310-0017	ADHESIVE
23C	1	2	300-2757	CONVEYOR DRIVE MOTOR-ONLY
23D	1	2	58484	KIT, 2 BRUSHES & 2 CAPS
23E	2	4	30153	BRUSH, SOLD INDIVIDUALLY, QTY 2 REQUIRED
24	1	1	33984	KIT, THERMOCOUPLE
24A	1	1	33812-1	THERMOCOUPLE
25	1	1	49938	DOOR, CONTROL COMPARTMENT, FOR RIGHT-SIDE
26	1	1	33813	RFI FILTER

# View of Left-hand Electrical and Gas Train Compartment





## Parts for Left-hand Electrical and Gas Train Compartment

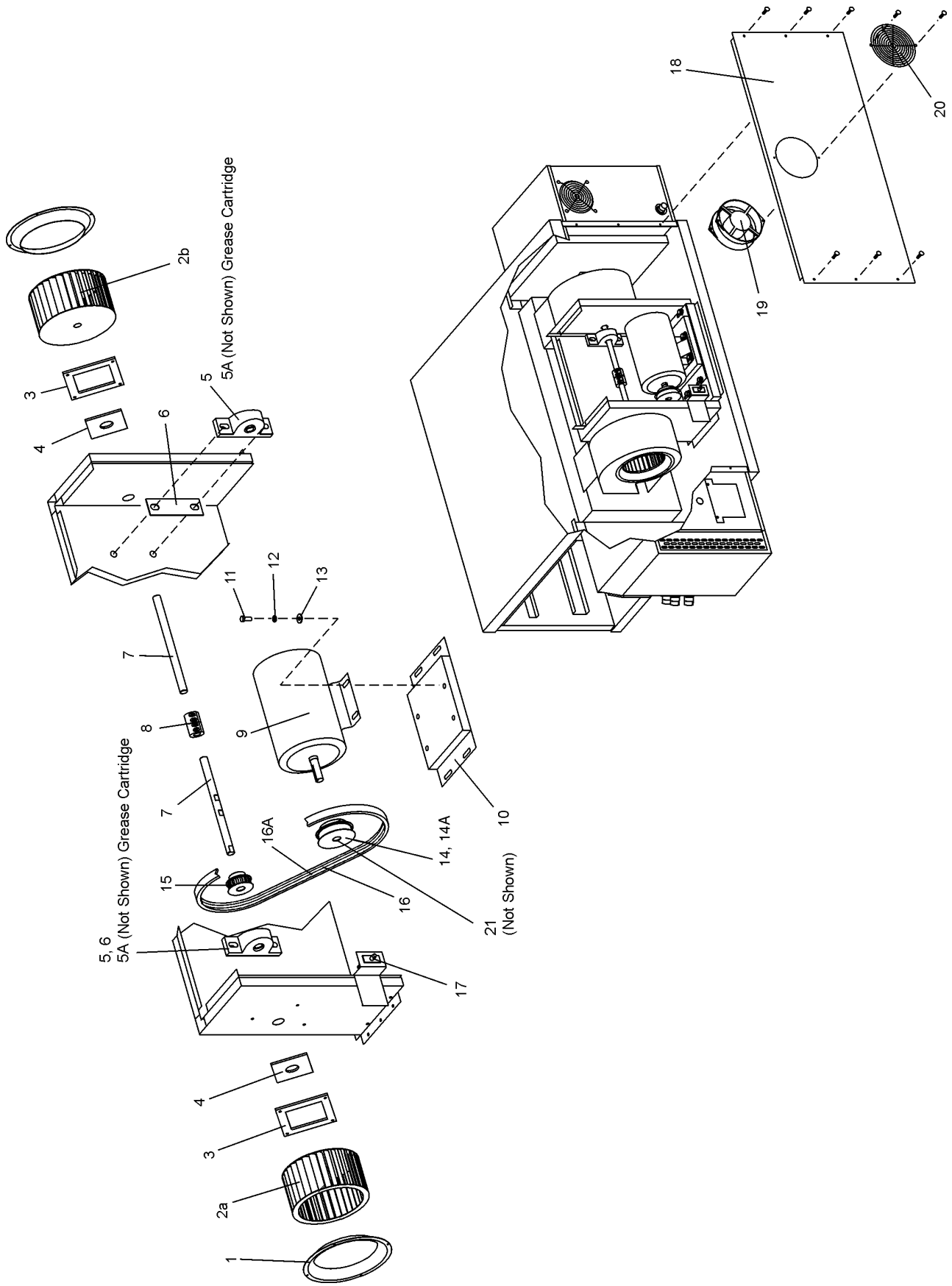
ITEM QTY.	P/N	DESCRIPTION
1 1	27470-0004	FANGUARD <i>NOTE: The oven does NOT have a cooling fan in this location. The opening provides passive cooling only.</i>
2 1	31047	TERMINAL BLOCK, 8-POLE-EARLIER VERSIONS
3 1	32108	TRANSFORMER, 240V PRI: 24V SEC, 65VA
4 1	28021-0047	SAFETY SWITCH
5 1	45644	CIRCUIT BREAKER, 1A
6 1	41872	TRANSFORMER, 240V PRI: 24V SEC, 25VA
7 1	31651	AMPLIFIER BOARD
8 1	50239	IGNITIONMODULE-24VAC
9 2	23051-0003	UNION, 1/2" PIPE
10 1	52291	COMBINATION GAS CONTROL VALVE (SAFETY REGULATOR)
11 1	41647	MODULATING GAS VALVE, M420, 1/2"
12 AR	48740	TUBE, ALUMINUM, 1/4" (6.35mm) O.D. (BULK)
13 2	44888	COMPRESSION FITTING, 1/4" TUBE
14 1	49940	MANIFOLD
15 2	30002	TAP PLUG
16A 3	44984	ORIFICE, MAIN, NATURAL GAS 0.0935" (2.3749mm, #42 DRILL)
16B 3	47320	ORIFICE, MAIN, PROPANE 0.0595" (1.5113mm, #54 DRILL)

ITEM QTY.	P/N	DESCRIPTION
17 1	33984	KIT, THERMOCOUPLE
17A 1	33812-1	THERMOCOUPLE
18 1	48687	DOOR, MACHINERY COMPARTMENT-FOR LEFT-SIDE
19 1	48489	ASSEMBLY, BURNER TUBES
20 1	49955	HOUSING, INSHOT BURNERS
21 1	47654	COVER PLATE, INSHOT BURNER HOUSING
22 3	44983	BURNER, INSHOT
23 1	48455	IGNITOR
24 1	50240	IGNITION CABLE, 25" (635mm)
25A 1	50276	KIT, LP (INCLUDES ITEMS 16B & 26B)
25B 1	50793	KIT, NAT GAS (INCLUDES ITEMS 16A & 26A)

**NOT SHOWN:**

26A 1	49951	ORIFICE, BYPASS, NATURAL GAS 0.0810" (2.0574mm, #46 DRILL)
26B 1	49948	ORIFICE, BYPASS, PROPANE 0.0520" (1.3208mm, #55 DRILL)
27 1	50794	IGNITION RELAY

# View of Rear Compartment and Blowers



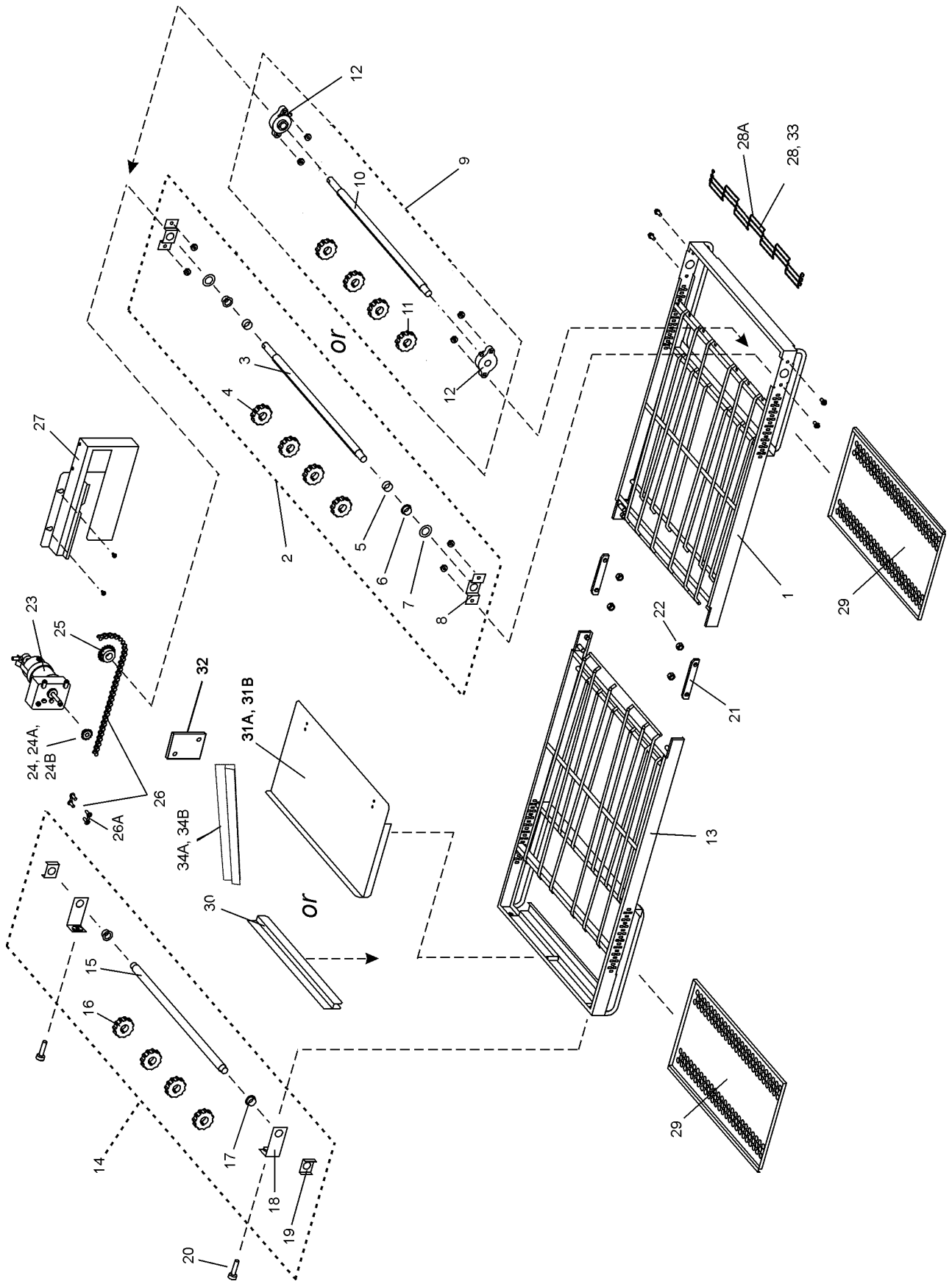
## Parts for Rear Compartment and Blowers

ITEM QTY.	P/N	DESCRIPTION	ITEM QTY.	P/N	DESCRIPTION	
1	2	42951	11	4	A3896	SCREW, HEX CAP HEAD 5/16"-18 X 7/8"
2a	1	42752	12	4	B301A8847	FLAT WASHER, 5/16"
		BLOWER WHEEL, RIGHT (VIEWED FROM REAR OF OVEN-LEFT HAND)	13	4	A3682	LOCK WASHER, 5/16"
2b	1	42753	14	1	50260	PULLEY-MOTOR (STANDARD RPM) 2.487" DIA.
		BLOWER WHEEL, LEFT (VIEWED FROM REAR OF OVEN-RIGHT HAND)	14A	1	50224*	PULLEY-MOTOR (LOWER RPM) 1.80" DIA.
3	2	42999	15	1	50224*	PULLEY, BLOWER SHAFT 1.80" DIA.
4	2	35121-0045	16	1	50517*	BELT, (50/60Hz) (STANDARD RPM)
		TEFLON SEAL	16A	1	51428*	BELT (LOWER RPM)
5	2	22072-0025	17	1	28021-0061	SAFETY SWITCH
		BEARING, 5/8" BORE WITH STANDARD GREASE	18	1	47633	BACK WALL
5A	--	17110-0015	19	1	36451	COOLING FAN
		GREASE, MM STANDARD CARTRIDGE	20	1	31497	FINGER GUARD, COOLING FAN
6	2	50160	21	1	50259*	BUSHING (STANDARD RPM)-SPLIT TAPER
		SHIM, BEARING	* SEE BELOW			
7	2	50151				
		BLOWER SHAFT				
8	1	44748				
		COUPLING, BLOWER SHAFT				
9	1	44687				
		MOTOR, BLOWER, 208/230V, 1/2HP				
10	1	44688				
		PLATE, MOTOR MOUNTING				

\* SEE BELOW

RPM	RPM KIT P/N	OVEN MODEL	HERTZ	MOTOR PULLEY W/SPLIT BUSHING	MTR PULLEY P/N SPLIT BUSH P/N	BLWR SHAFT PULLEY DESCRIPTION	BLWR SHAFT PULLEY	BELT SIZE DESCRIPTION	BELT P/N	RPM OF FAN
STD	50256	PS536GS	60	POLY G BUSHING	50260 50259	POLY V	50224	POLY V	50517	2400 1950
LOWER	51427	PS536GS	60	POLY V	50224	POLY V	50224	POLY V	51428	1725

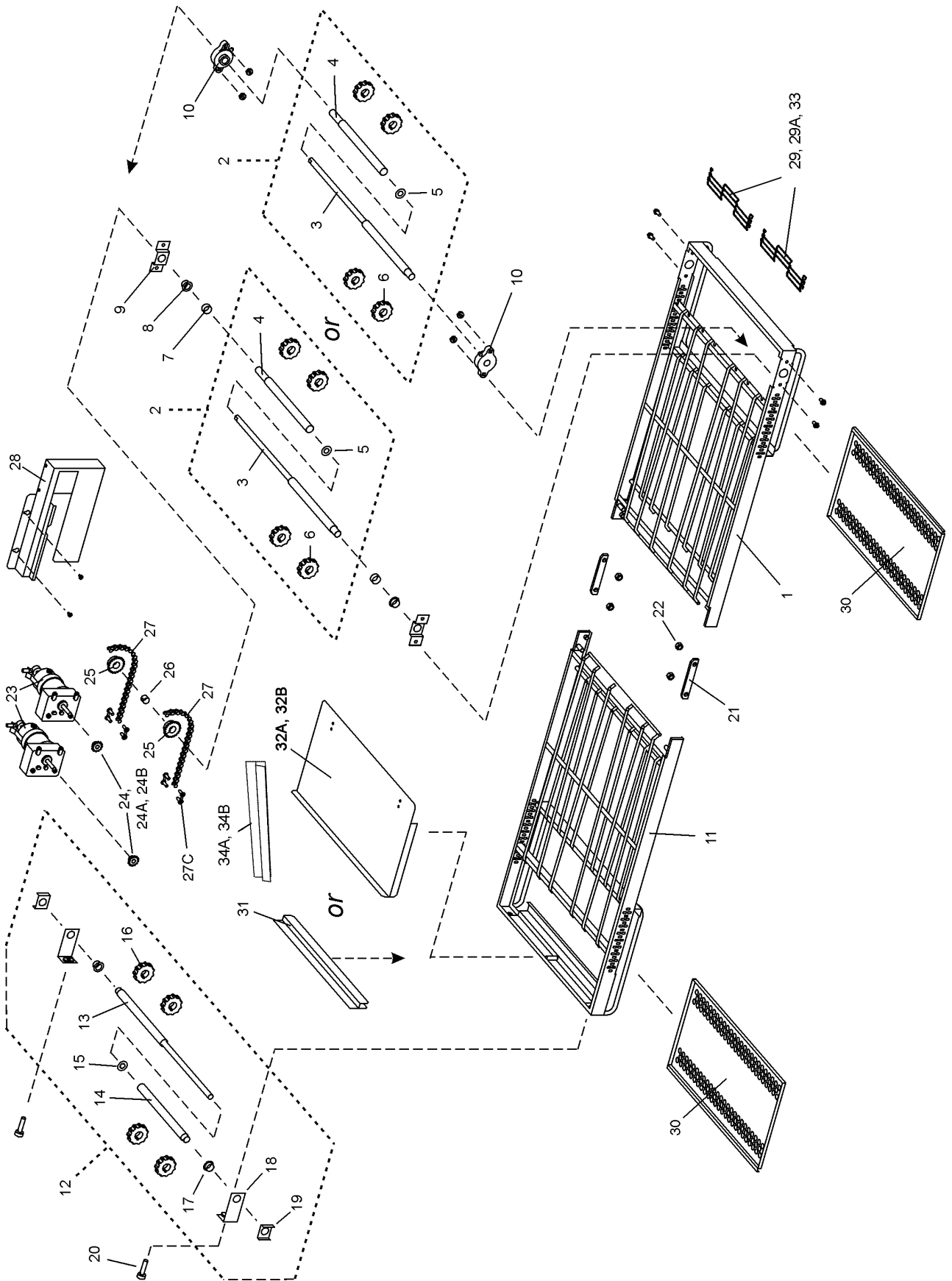
**View of Single-Belt Conveyor - Standard Speed (3-30 Minutes), High Speed (1-10 minutes)**



## Parts for Single-Belt Conveyor - Standard Speed (3-30 Minutes), High Speed (1-10 minutes)

P/N - 60"		P/N - 76"		P/N - 60"		P/N - 76"	
ITEM QTY.	CONVEYOR	CONVEYOR	CONVEYOR	ITEM QTY.	CONVEYOR	CONVEYOR	CONVEYOR
DESCRIPTION		DESCRIPTION		DESCRIPTION		DESCRIPTION	
1	1	48847	< - - - - -	48797	< - - - - -	48790	< - - - - -
FRAME, DRIVESIDE		FRAME, DRIVESIDE		FRAME, DRIVESIDE		FRAME, DRIVESIDE	
2	1	< - - - - -	48797	< - - - - -	48781	< - - - - -	48781
ASSEMBLY, STANDARD DRIVE SHAFT (INC. ITEMS 3-8)		ASSEMBLY, STANDARD DRIVE SHAFT (INC. ITEMS 3-8)		DRIVE SHAFT		DRIVE SHAFT	
3	1	< - - - - -	48781	< - - - - -	48781	< - - - - -	48781
SPROCKET, CONV. BELT		SPROCKET, CONV. BELT		SPROCKET, CONV. BELT		SPROCKET, CONV. BELT	
4	4	< - - - - -	22229-0003	< - - - - -	22229-0003	< - - - - -	22229-0003
5	2	< - - - - -	43275	< - - - - -	43275	< - - - - -	43275
SPACER		SPACER		SPACER		SPACER	
6	2	< - - - - -	22034-0003	< - - - - -	22034-0003	< - - - - -	22034-0003
BUSHING, BRONZE 5/8" I.D.		BUSHING, BRONZE 5/8" I.D.		BUSHING, BRONZE 5/8" I.D.		BUSHING, BRONZE 5/8" I.D.	
7	2	< - - - - -	35000-1080	< - - - - -	35000-1080	< - - - - -	35000-1080
SPACER, NYLON		SPACER, NYLON		SPACER, NYLON		SPACER, NYLON	
8	2	< - - - - -	49972	< - - - - -	49972	< - - - - -	49972
BRACKET, DRIVESUPPORT		BRACKET, DRIVESUPPORT		BRACKET, DRIVESUPPORT		BRACKET, DRIVESUPPORT	
9	1	< - - - - -	48782	< - - - - -	48782	< - - - - -	48782
ASSEMBLY, HIGH SPEED DRIVE SHAFT (INC. ITEMS 10-11)		ASSEMBLY, HIGH SPEED DRIVE SHAFT (INC. ITEMS 10-11)		ASSEMBLY, HIGH SPEED DRIVE SHAFT (INC. ITEMS 10-11)		ASSEMBLY, HIGH SPEED DRIVE SHAFT (INC. ITEMS 10-11)	
10	1	< - - - - -	48781	< - - - - -	48781	< - - - - -	48781
DRIVE SHAFT		DRIVE SHAFT		DRIVE SHAFT		DRIVE SHAFT	
11	4	< - - - - -	22229-0003	< - - - - -	22229-0003	< - - - - -	22229-0003
SPROCKET, CONV. BELT		SPROCKET, CONV. BELT		SPROCKET, CONV. BELT		SPROCKET, CONV. BELT	
12	2	< - - - - -	45377	< - - - - -	45377	< - - - - -	45377
FLANGE BEARING (HIGH SPEED ONLY)		FLANGE BEARING (HIGH SPEED ONLY)		FLANGE BEARING (HIGH SPEED ONLY)		FLANGE BEARING (HIGH SPEED ONLY)	
13	1	48746	48795	48795	48795	48795	48795
FRAME, IDLER SIDE		FRAME, IDLER SIDE		FRAME, IDLER SIDE		FRAME, IDLER SIDE	
14	1	48780	48780	48780	48780	48780	48780
ASSEMBLY, IDLER SHAFT (INC. ITEMS 15-19)		ASSEMBLY, IDLER SHAFT (INC. ITEMS 15-19)		ASSEMBLY, IDLER SHAFT (INC. ITEMS 15-19)		ASSEMBLY, IDLER SHAFT (INC. ITEMS 15-19)	
15	1	< - - - - -	48779	< - - - - -	48779	< - - - - -	48779
IDLER SHAFT		IDLER SHAFT		IDLER SHAFT		IDLER SHAFT	
16	4	< - - - - -	22229-0003	< - - - - -	22229-0003	< - - - - -	22229-0003
SPROCKET, CONV. BELT		SPROCKET, CONV. BELT		SPROCKET, CONV. BELT		SPROCKET, CONV. BELT	
17	2	< - - - - -	22034-0003	< - - - - -	22034-0003	< - - - - -	22034-0003
BUSHING, BRONZE 5/8" I.D.		BUSHING, BRONZE 5/8" I.D.		BUSHING, BRONZE 5/8" I.D.		BUSHING, BRONZE 5/8" I.D.	
18	2	37000-0413	37000-0413	37000-0413	37000-0413	37000-0413	37000-0413
BRACKET, IDLER ADJUSTMT.		BRACKET, IDLER ADJUSTMT.		BRACKET, IDLER ADJUSTMT.		BRACKET, IDLER ADJUSTMT.	
19	2	< - - - - -	54947	< - - - - -	54947	< - - - - -	54947
BRACKET, IDLER SUPPORT		BRACKET, IDLER SUPPORT		BRACKET, IDLER SUPPORT		BRACKET, IDLER SUPPORT	
20	2	35000-1008	35000-1008	35000-1008	35000-1008	35000-1008	35000-1008
SCREW, IDLER ADJUSTMENT		SCREW, IDLER ADJUSTMENT		SCREW, IDLER ADJUSTMENT		SCREW, IDLER ADJUSTMENT	
21	2	< - - - - -	50792	< - - - - -	50792	< - - - - -	50792
PIVOT PLATE		PIVOT PLATE		PIVOT PLATE		PIVOT PLATE	
22	4	< - - - - -	21176-0002	< - - - - -	21176-0002	< - - - - -	21176-0002
LOCKNUT, HEX 3/8"-16 SS		LOCKNUT, HEX 3/8"-16 SS		LOCKNUT, HEX 3/8"-16 SS		LOCKNUT, HEX 3/8"-16 SS	
23	1	< - - - - -	SEE PAGES 14 & 15	< - - - - -	SEE PAGES 14 & 15	< - - - - -	SEE PAGES 14 & 15
ASSEMBLY, CONVEYOR MOTOR AND PICKUP (INC. ITEM 23a)		ASSEMBLY, CONVEYOR MOTOR AND PICKUP (INC. ITEM 23a)		ASSEMBLY, CONVEYOR MOTOR AND PICKUP (INC. ITEM 23a)		ASSEMBLY, CONVEYOR MOTOR AND PICKUP (INC. ITEM 23a)	
23A	1	< - - - - -	SEE PAGES 14 & 15	< - - - - -	SEE PAGES 14 & 15	< - - - - -	SEE PAGES 14 & 15
PICKUP		PICKUP		PICKUP		PICKUP	
24	1	< - - - - -	34128	< - - - - -	34128	< - - - - -	34128
SPROCKET, CONVEYOR DRIVE MOTOR, 20T (STANDARD SPEED) .317 BORE		SPROCKET, CONVEYOR DRIVE MOTOR, 20T (STANDARD SPEED) .317 BORE		SPROCKET, CONVEYOR DRIVE MOTOR, 20T (STANDARD SPEED) .317 BORE		SPROCKET, CONVEYOR DRIVE MOTOR, 20T (STANDARD SPEED) .317 BORE	
24A	1	< - - - - -	38215	< - - - - -	38215	< - - - - -	38215
SPROCKET, 22T (HIGH SPEED) .314 BORE		SPROCKET, 22T (HIGH SPEED) .314 BORE		SPROCKET, 22T (HIGH SPEED) .314 BORE		SPROCKET, 22T (HIGH SPEED) .314 BORE	
24B	1	< - - - - -	34129	< - - - - -	34129	< - - - - -	34129
SPROCKET, 12T .314 BORE (EARLY MODELS)		SPROCKET, 12T .314 BORE (EARLY MODELS)		SPROCKET, 12T .314 BORE (EARLY MODELS)		SPROCKET, 12T .314 BORE (EARLY MODELS)	
25	1	< - - - - -	22159-0003	< - - - - -	22159-0003	< - - - - -	22159-0003
SPROCKET, SHAFT DRIVE SHAFT, 20T 5/8 BORE		SPROCKET, SHAFT DRIVE SHAFT, 20T 5/8 BORE		SPROCKET, SHAFT DRIVE SHAFT, 20T 5/8 BORE		SPROCKET, SHAFT DRIVE SHAFT, 20T 5/8 BORE	
26	1	50050	50052	50052	50052	50052	50052
ASSEMBLY, DRIVE CHAIN (INC. ITEM 26a)		ASSEMBLY, DRIVE CHAIN (INC. ITEM 26a)		ASSEMBLY, DRIVE CHAIN (INC. ITEM 26a)		ASSEMBLY, DRIVE CHAIN (INC. ITEM 26a)	
26A	1	< - - - - -	3101212	< - - - - -	3101212	< - - - - -	3101212
MASTER LINK, DRIVE CHAIN		MASTER LINK, DRIVE CHAIN		MASTER LINK, DRIVE CHAIN		MASTER LINK, DRIVE CHAIN	
27	1	48851	50029	50029	50029	50029	50029
ASSEMBLY, CHAIN COVER FOR OVENS WITH RIGHT-SIDE CONTROLS		ASSEMBLY, CHAIN COVER FOR OVENS WITH RIGHT-SIDE CONTROLS		ASSEMBLY, CHAIN COVER FOR OVENS WITH RIGHT-SIDE CONTROLS		ASSEMBLY, CHAIN COVER FOR OVENS WITH RIGHT-SIDE CONTROLS	
28	1	50057	50059	50059	50059	50059	50059
BELT, CONVEYOR, 18"/457mm, STANDARD		BELT, CONVEYOR, 18"/457mm, STANDARD		BELT, CONVEYOR, 18"/457mm, STANDARD		BELT, CONVEYOR, 18"/457mm, STANDARD	
28A	A/R	< - - - - -	8500236	< - - - - -	8500236	< - - - - -	8500236
12" SECTION OF BELT		12" SECTION OF BELT		12" SECTION OF BELT		12" SECTION OF BELT	
29	2	48707	48708	48708	48708	48708	48708
CRUMB PAN W/HOLES, ENTRANCE & EXIT		CRUMB PAN W/HOLES, ENTRANCE & EXIT		CRUMB PAN W/HOLES, ENTRANCE & EXIT		CRUMB PAN W/HOLES, ENTRANCE & EXIT	
30	1	50044	50044	50044	50044	50044	50044
END STOP		END STOP		END STOP		END STOP	
31A	1	50040	50040	50040	50040	50040	50040
EXIT TRAY, 8"/203mm		EXIT TRAY, 8"/203mm		EXIT TRAY, 8"/203mm		EXIT TRAY, 8"/203mm	
31B	1	50023	50023	50023	50023	50023	50023
EXIT TRAY, 20"/508mm		EXIT TRAY, 20"/508mm		EXIT TRAY, 20"/508mm		EXIT TRAY, 20"/508mm	
32	1	50235	50235	50235	50235	50235	50235
PLATE MOTOR COVER ASSY		PLATE MOTOR COVER ASSY		PLATE MOTOR COVER ASSY		PLATE MOTOR COVER ASSY	
33	1	58391	58391	58391	58391	58391	58391
KIT, MASTER LINK		KIT, MASTER LINK		KIT, MASTER LINK		KIT, MASTER LINK	
34A	1	30830	30830	30830	30830	30830	30830
SIDE STOP, LEFT		SIDE STOP, LEFT		SIDE STOP, LEFT		SIDE STOP, LEFT	
34B	1	30796	30796	30796	30796	30796	30796
SIDE STOP, RIGHT (NOT SHOWN)		SIDE STOP, RIGHT (NOT SHOWN)		SIDE STOP, RIGHT (NOT SHOWN)		SIDE STOP, RIGHT (NOT SHOWN)	

**View of Split Belt Conveyor - Standard Speed (3-30 Minutes), High Speed (1-10 minutes)**



## Parts for Split Belt Conveyor - Standard Speed (3-30 Minutes), High Speed (1-10 minutes)

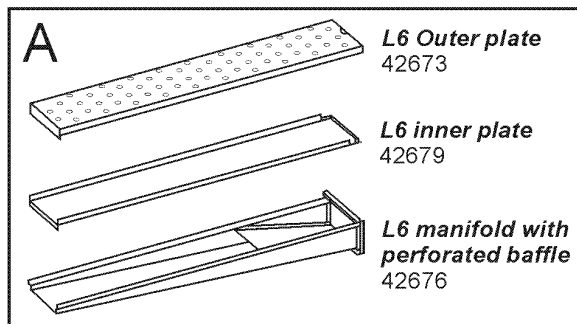
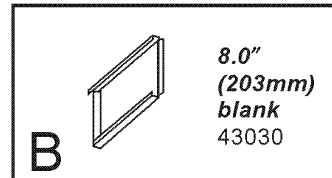
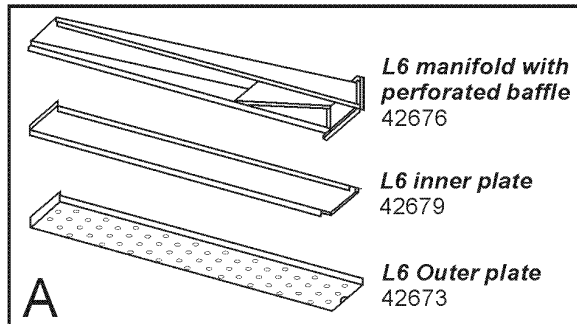
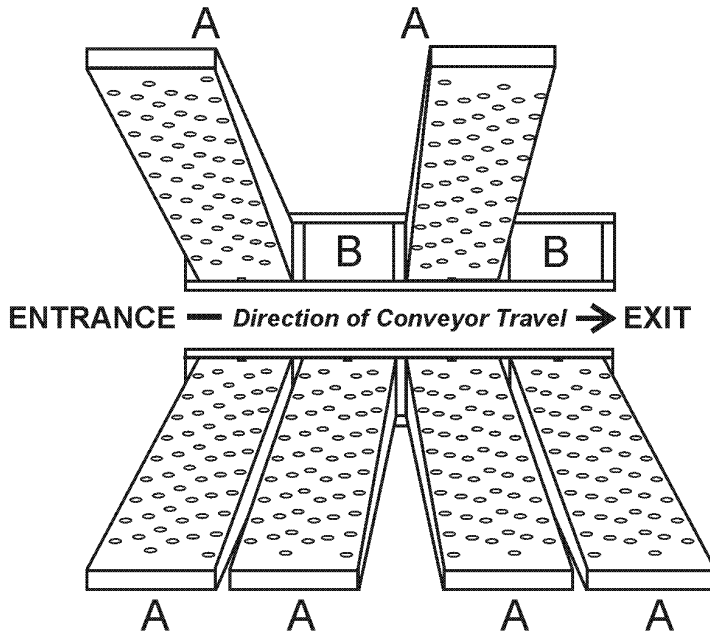
ITEM QTY.		P/N - 60" CONVEYOR	P/N - 76" CONVEYOR	DESCRIPTION	P/N - 60" CONVEYOR		P/N - 76" CONVEYOR	DESCRIPTION
1	1	48847	48790	FRAME, DRIVESIDE	SEE PAGES 14 & 15			PICKUP
2	1	< - - - -	48759	ASSEMBLY, SPLIT DRIVE SHAFT, STANDARD AND HIGH SPEED (INC. ITEMS 3-6)	< - - - -	34128	< - - - -	SPROCKET, CONVEYOR DRIVE MOTOR, 20T (STANDARD SPEED) .317 BORE
3	1	< - - - -	49969	SPLIT DRIVE SHAFT - MAIN	< - - - -	38215	< - - - -	SPROCKET, 22T (HIGH SPEED) .314 BORE
4	1	< - - - -	48837	SPLIT DRIVE SHAFT - SLEEVE	< - - - -	34129	< - - - -	SPROCKET, 12T (.314 BORE (EARLY MODELS))
5	1	< - - - -	21415-0001	FLAT WASHER, BRONZE	< - - - -		< - - - -	
6	4	< - - - -	22229-0003	SPROCKET, CONV. BELT	< - - - -	22159-0003	< - - - -	SPROCKET, CONVEYOR DRIVE SHAFT, 20T (STANDARD AND HIGH SPEED)
7	2	< - - - -	43275	SPACER (STANDARD SPEED ONLY)	< - - - -	35900-0023	< - - - -	BUSHING, DRIVES PROCKET
8	2	< - - - -	22034-0003	BUSHING, BRONZE 5/8" I.D. (STANDARD ONLY)	50050	50053	50052	ASSEMBLY, DRIVE CHAIN, REAR BELT (LONG - INC. ITEM 27C) 20"
9	2	< - - - -	49972	BRACKET, DRIVE SUPPORT (STANDARD ONLY)	50051	50052	50052	ASSEMBLY, DRIVE CHAIN, FRONT BELT (SHORT - INC. ITEM 27C) 12"
10	2	< - - - -	45377	FLANGE BEARING (HIGH SPEED ONLY)	< - - - -	3101212	< - - - -	MASTER LINK, DRIVE CHAIN
11	1	48746	48795	FRAME, IDLERSIDE	48851	50029	50029	ASSEMBLY, CHAIN COVER
12	1	< - - - -	48769	ASSEMBLY, SPLIT IDLER SHAFT (INC. ITEMS 13-19)	50056	50058	50058	BELT, CONVEYOR, 9"/229mm, STANDARD
13	1	< - - - -	49968	SPLIT IDLER SHAFT - MAIN	< - - - -	37022	< - - - -	12" SECTION OF BELT
14	1	< - - - -	48778	SPLIT IDLER SHAFT - SLEEVE	48707	48708	48708	CRUMB PAN, W/HOLES, ENTRANCE & EXIT
15	1	< - - - -	21415-0001	FLAT WASHER, BRONZE	50044	50044	50044	END STOP
16	4	< - - - -	22229-0003	SPROCKET, CONV. BELT	50040	50040	50040	EXIT TRAY, 8"/203mm
17	2	< - - - -	22034-0003	BUSHING, BRONZE 5/8" I.D.	50023	50023	50023	EXIT TRAY, 20"/508mm
18	2	< - - - -	37000-0413	BRACKET, IDLER ADJUSTMT.	< - - - -	37020	< - - - -	KIT, MASTER LINK
19	2	< - - - -	54947	BRACKET, IDLER SUPPORT	30830	30830	30830	SIDESTOP, LEFT
20	2	< - - - -	35000-1008	SCREW, IDLER ADJUSTMENT	30796	30796	30796	SIDESTOP, RIGHT (NOT SHOWN)
21	2	< - - - -	50792	PIVOT PLATE				
22	4	< - - - -	21176-0002	LOCK NUT, HEX 3/8" - 16SS				
23			SEE PAGES 14 & 15	ASSEMBLY, CONVEYOR MOTOR AND PICKUP (INC. ITEM 23a)				

# PS536

## Standard Air finger configuration

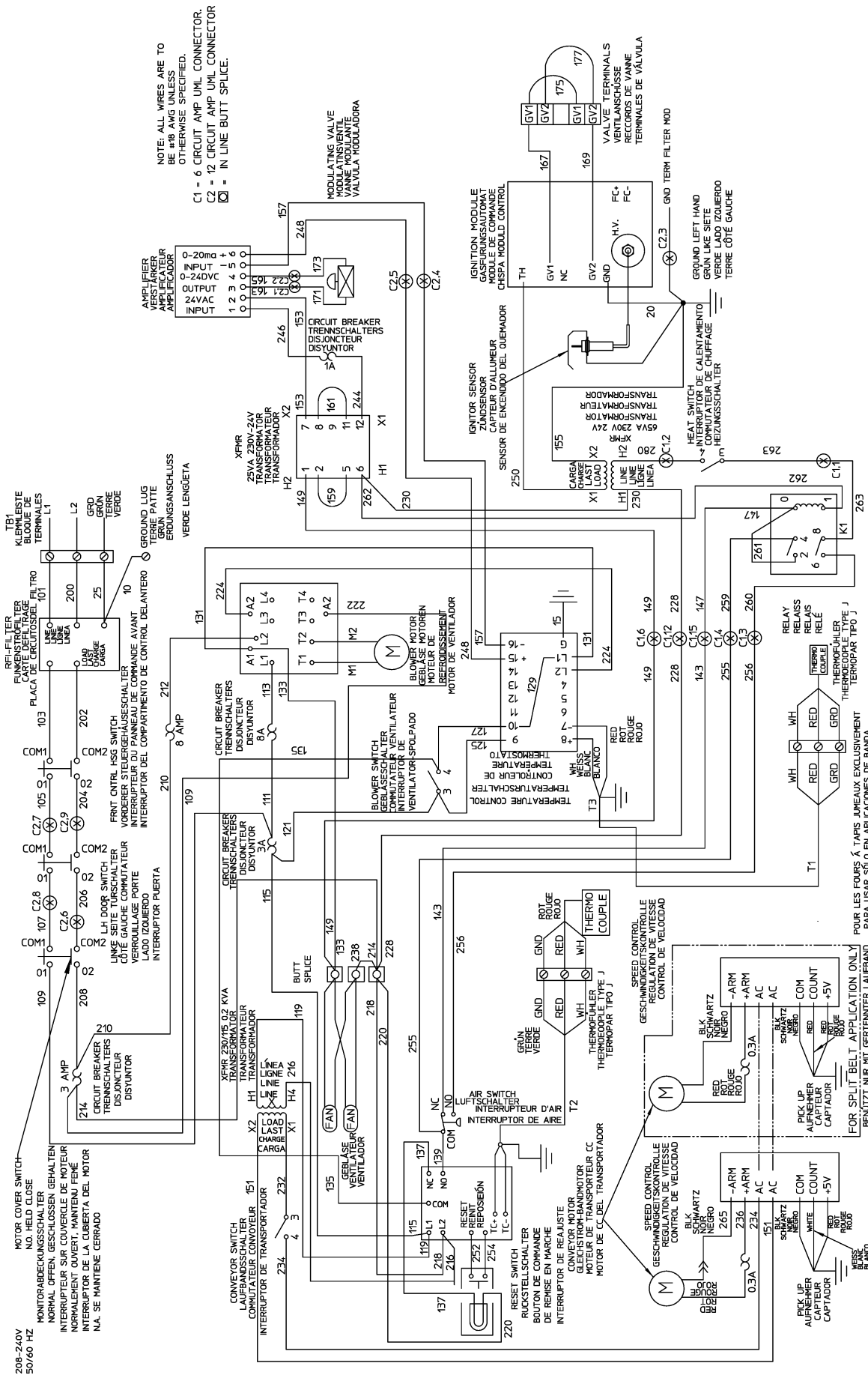
NOTE: Left-to-Right configuration is shown.

For Right-to-Left conveyors, "mirror" the placement of the fingers.





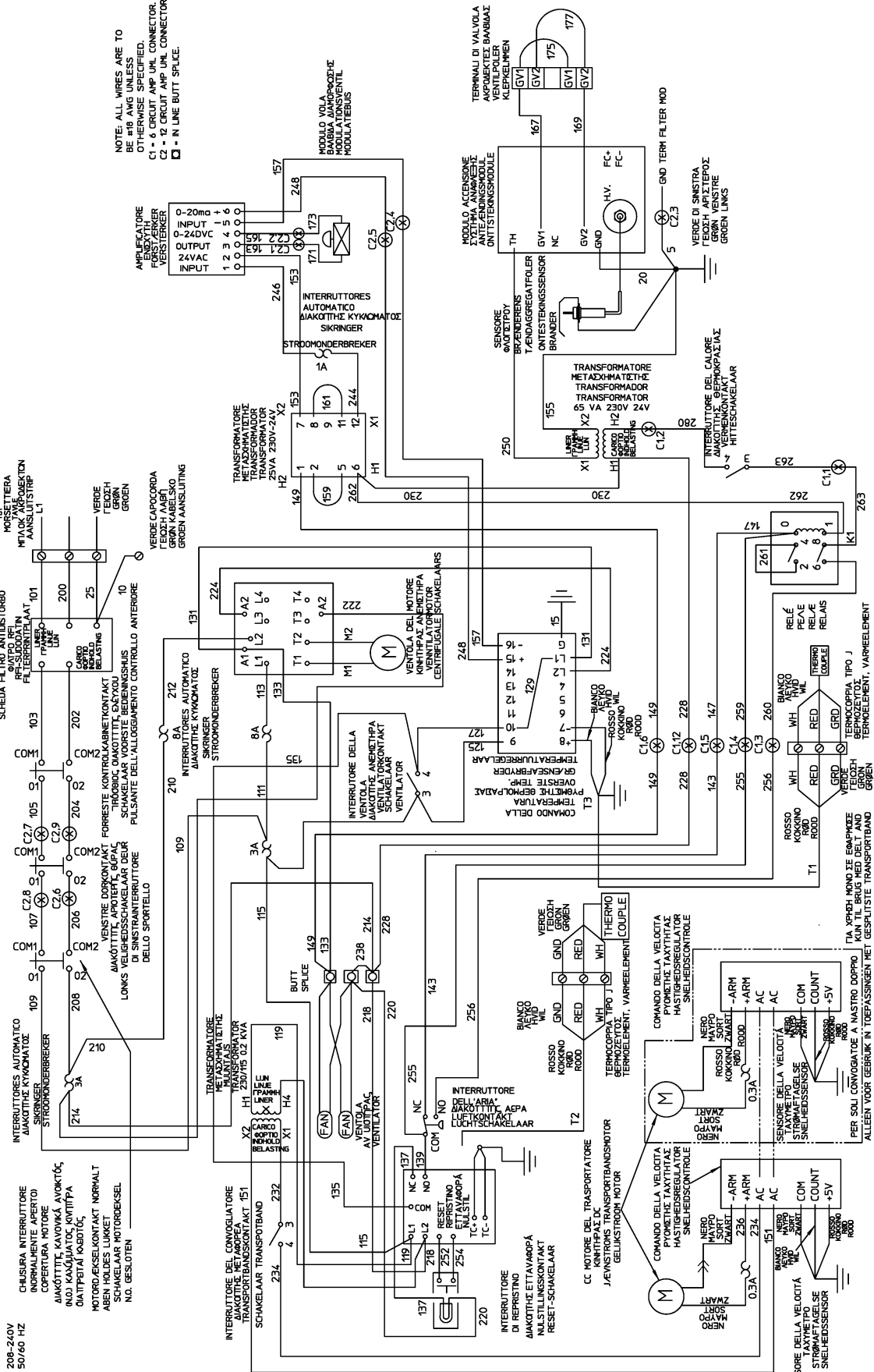
# Wiring Diagrams (electrical schematics)



55553B

208;240 volt 50/60 Hz, 1 Phase ENG/GM/FR/SP

208-240V  
50/60 HZ



NOTE: ALL WIRES ARE TO BE #18 AWG UNLESS OTHERWISE SPECIFIED.  
C1 = 6 CIRCUIT AMP UNL. CONNECTOR.  
C2 = 12 CIRCUIT AMP UNL. CONNECTOR.  
□ = IN LINE BUTT SPLICE.

55551B

208;240 volt 50/60 Hz, 1 Phase IT/GR/DN/DU

## NOTES

