

Parts Manual

with Wiring Diagrams
for domestic and standard export ovens

Serial # Code

First 4 digits - order of production

Fifth digit - model specific

Sixth and Seventh digit - month of production

Eighth and Ninth digit - year of production

Starting Serial # 366041105 & after

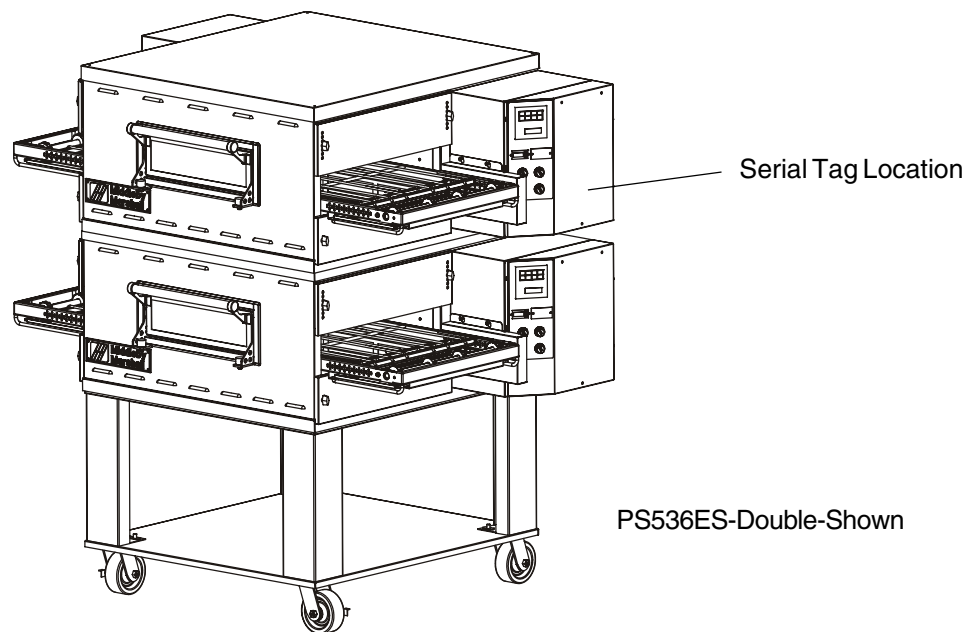


Table of Contents: Page 2



www.middleby.com

email: techsupport@middleby.com

Table of Contents

| | |
|---|----|
| Oven Specifications | 3 |
| Key Parts | 7 |
| View of Installation Kit | 8 |
| Parts for Installation Kit | 8 |
| Standard Finger Placement and Part Numbers | 9 |
| View of Panels, End Plugs and Window | 10 |
| Parts for Panels, End Plugs and Window..... | 11 |
| View of Right-hand Electrical Compartment | 12 |
| Parts for Right-hand Electrical Compartment | 13 |
| View of Left-hand Electrical Compartment..... | 14 |
| Parts for Left-hand Electrical Compartment | 15 |
| View of Rear Compartment and Blowers | 16 |
| Parts for Rear Compartment and Blowers | 17 |
| View of Single-Belt Conveyor..... | 18 |
| Parts for Single-Belt Conveyor | 19 |
| View of Split-Belt Conveyor..... | 20 |
| Parts for Split-Belt Conveyor | 21 |
| Wiring Diagrams (electrical schematics) | |
| E208–240 Volt, 3 Phase ENG/UK/GM/FR/SP 58214D | 22 |
| E208–240 Volt, 3 Phase IT/GR/DN/DU 58245C | 23 |
| E380–480 Volt, 3 Phase ENG/UK/GM/FR/SP 58267C | 24 |
| E380–480 Volt, 3 Phase IT/GR/DN/DU 58269C | 25 |
| E380V CE, 3 Phase UK/GM/FR/SP 58330C | 26 |
| E380V CE, 3 Phase IT/GR/DN/DU 58332C | 27 |

PS536ES SERIES OVEN SPECIFICATIONS

Table 1-1: Dimensions

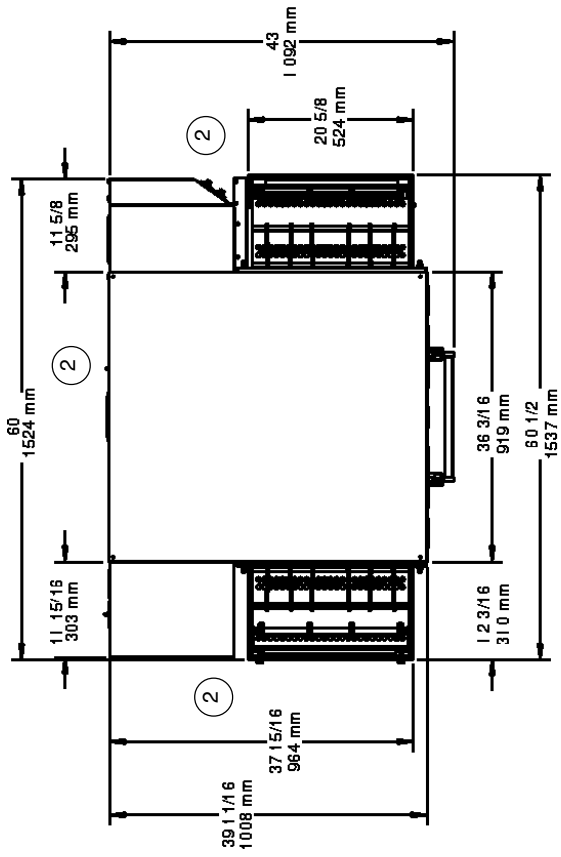
| | | |
|--|--|------------------------------|
| Overall Height: | single oven with 17-1/2" (446mm) legs | 43-1/2" (1105mm) |
| | double oven with standard 17-1/2" (446mm) legs | 63" (1600mm) |
| | triple oven with 6" (152mm) legs | 71" (1803mm) |
| Overall Depth: | | 46" (1168mm) |
| Overall Length: | with standard 60"/1524mm conveyor | 61" (1549mm) |
| | with optional 76"/1930mm conveyor | 77" (1956mm) |
| Baking Chamber Length | | 36" (914mm) |
| Conveyor Width: | Single Belt | 18" (457mm) |
| | Split Belt | 2 x 9" (228mm) |
| Conveyor Length | | 60" (1524mm) or 76" (1930mm) |
| Recommended Minimum Clearances: | | |
| | Rear of oven to wall | 3" (76mm) |
| | Control end of conveyor to wall | 1" (25.4mm) |
| | Non-control end of oven to wall | 1" (25.4mm) |

Table 1-2: General specifications (per oven cavity)

| | |
|--------------------------------------|------------------|
| Weight | 400 lbs. (182kg) |
| Rated Heat Input: | 17 kW/hr. |
| Maximum Operating Temperature | 550°F (288°C) |
| Warmup Time | 25 minutes |

SERIES PS536ES ELECTRICAL SPECIFICATIONS

| Main Blower & Elements Voltage | Control Circuit Voltage | Phase | Frequency | Amperage Draw | Poles | Wires |
|--------------------------------|-------------------------|-----------|-----------|---------------|-----------|---------------------------------|
| 208-240V | 208-240V | 3 Ph | 50/60 Hz | 60 Amp | 4 Pole | 4 Wire (3 hot, 1 grd) |
| HEATER AMPERAGE | | | | | | |
| AMPERAGE | | | | | | |
| | Voltage | kW | L1 | L2 | L3 | |
| | 208 | 17 | 49.4 | 49.4 | 47.2 | |
| | 240 | 17 | 42.1 | 42.1 | 40.9 | |
| 380-400V | 208-240V | 3 Ph | 50/60 Hz | 60 Amp | 4 Pole | 5 Wire (3 hot, 1neut, 1 grd) |
| HEATER AMPERAGE | | | | | | |
| | Voltage | kW | L1 | L2 | L3 | N |
| | 380-400 | 17-18.8 | 27.0-29.8 | 25.8-28.6 | 25.8-28.6 | 1.2 |
| 480V | 208-240V | 3 Ph | 50/60 Hz | 60 Amp | 4 Pole | 5 Wire (3 hot, 1neut, 1 grd) |
| HEATER AMPERAGE | | | | | | |
| | Voltage | kW | L1 | L2 | L3 | N |
| | 480 | 17 | 21.6 | 20.4 | 20.4 | 1.2 |
| | | | | | | Control circuit is 240V |



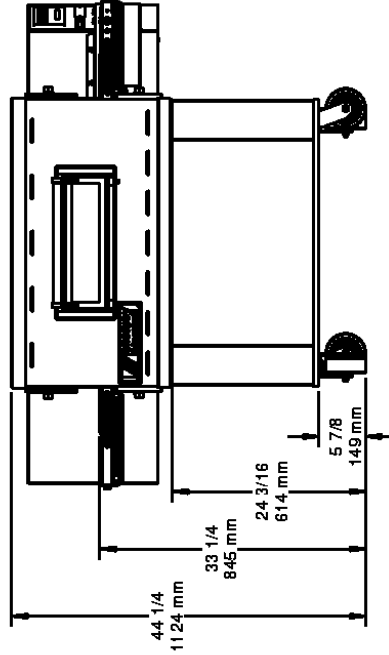
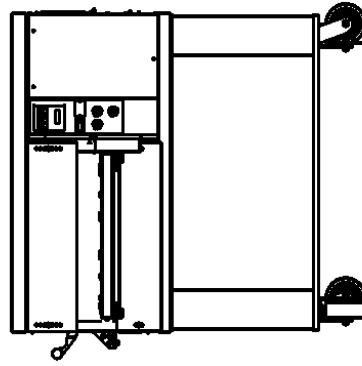
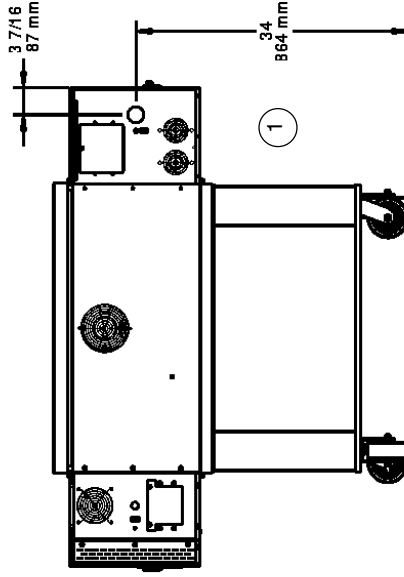
1 ELECTRICAL JUNCTION BOX

2 RECOMMENDED MINIMUM CLEARANCES:

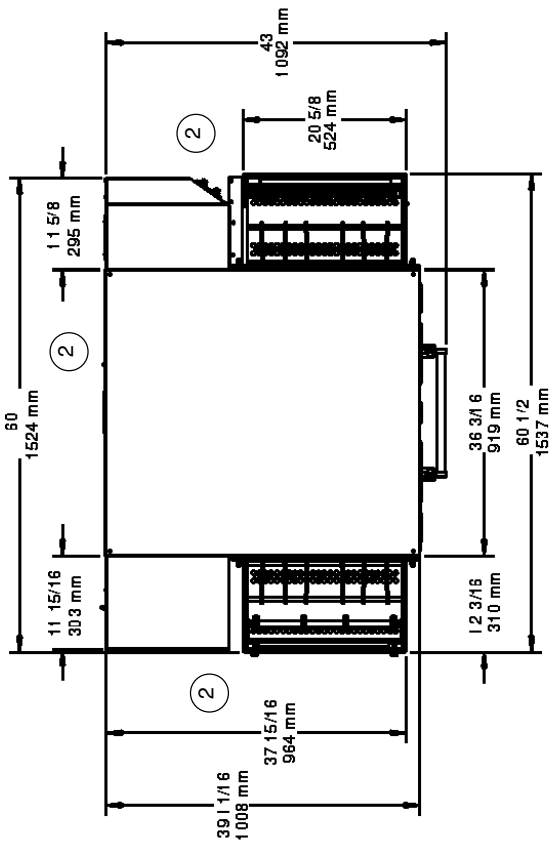
Rear of Oven to Wall - 6" (150mm)

Non-control End of Oven to Wall - 0"

Control End of Oven to Wall - 0"

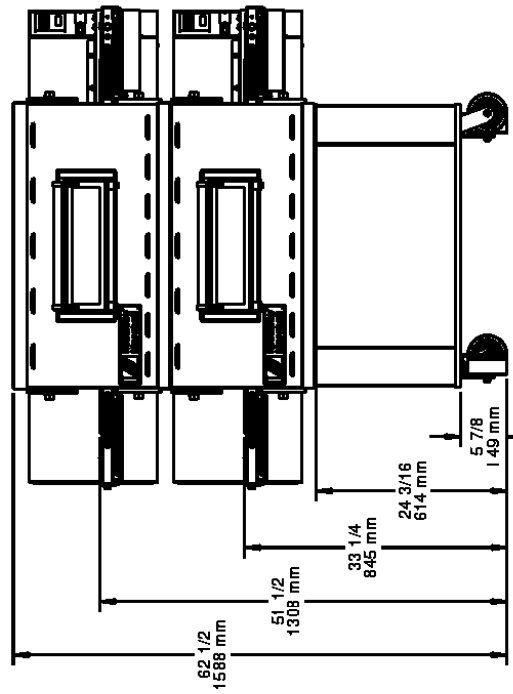
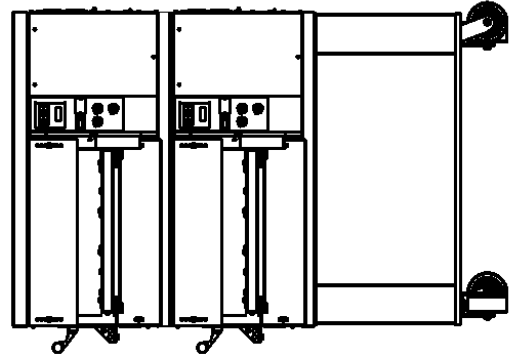
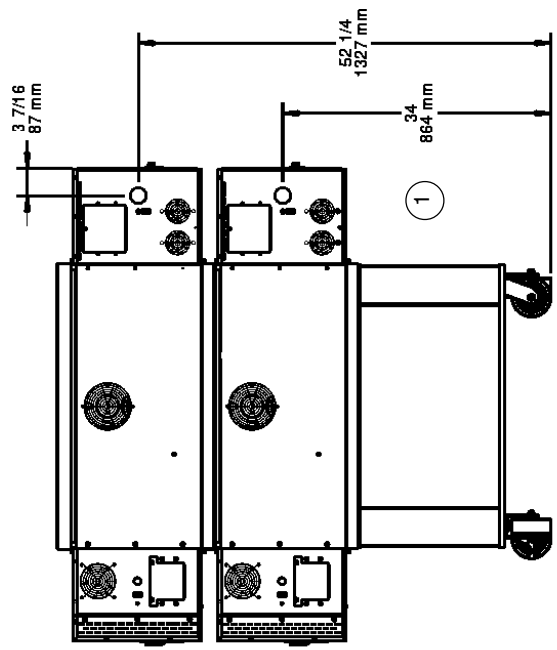


MODEL PS536ES SINGLE OVEN DIMENSIONS

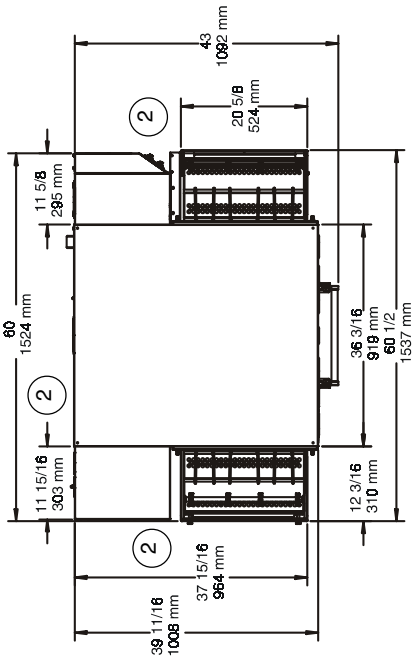


1 ELECTRICAL JUNCTION BOX

2 RECOMMENDED MINIMUM CLEARANCES:
 Rear of Oven to Wall - 6" (150mm)
 Non-control End of Oven to Wall - 0"
 Control End of Oven to Wall - 0"

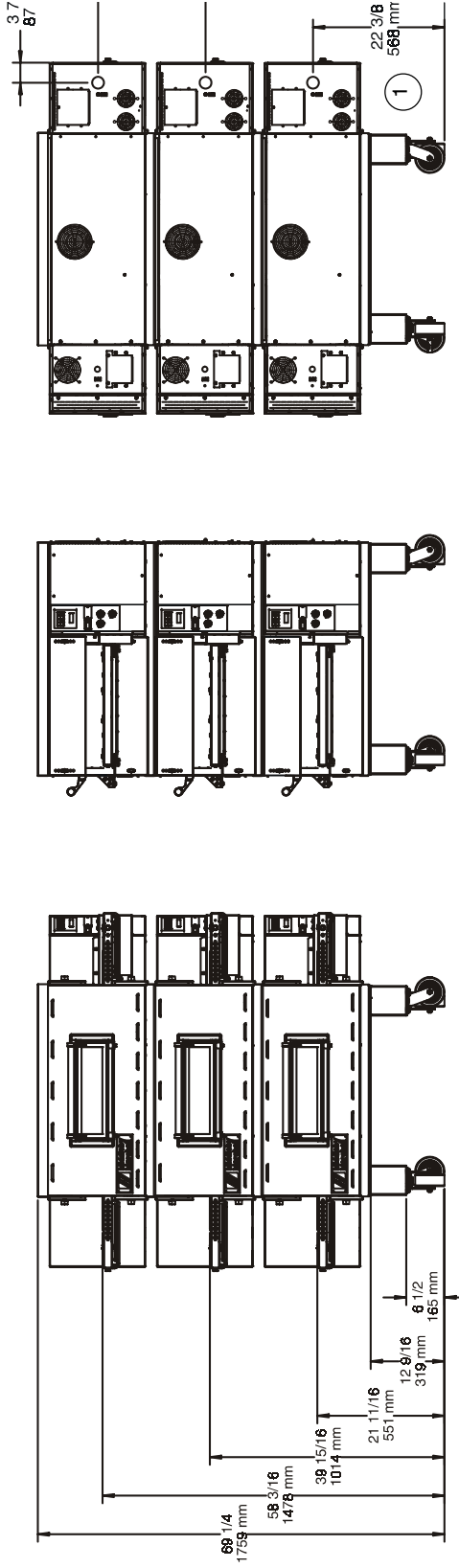


MODEL PS536ES DOUBLE OVEN DIMENSIONS



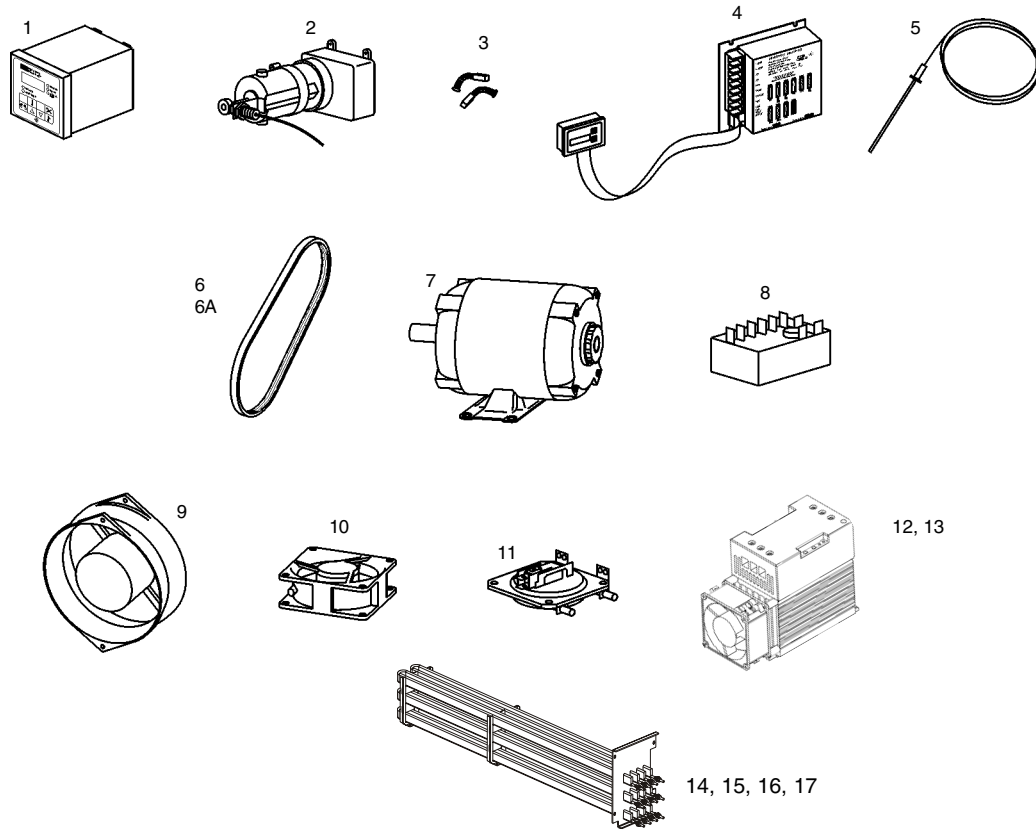
1 ELECTRICAL JUNCTION BOX

2 RECOMMENDED MINIMUM CLEARANCES:
 Rear of Oven - 6" (150mm)
 Non-control End of Oven to Wall - 0"
 Control End of Oven to Wall - 0"



MODEL PS536ES TRIPLE OVEN DIMENSIONS

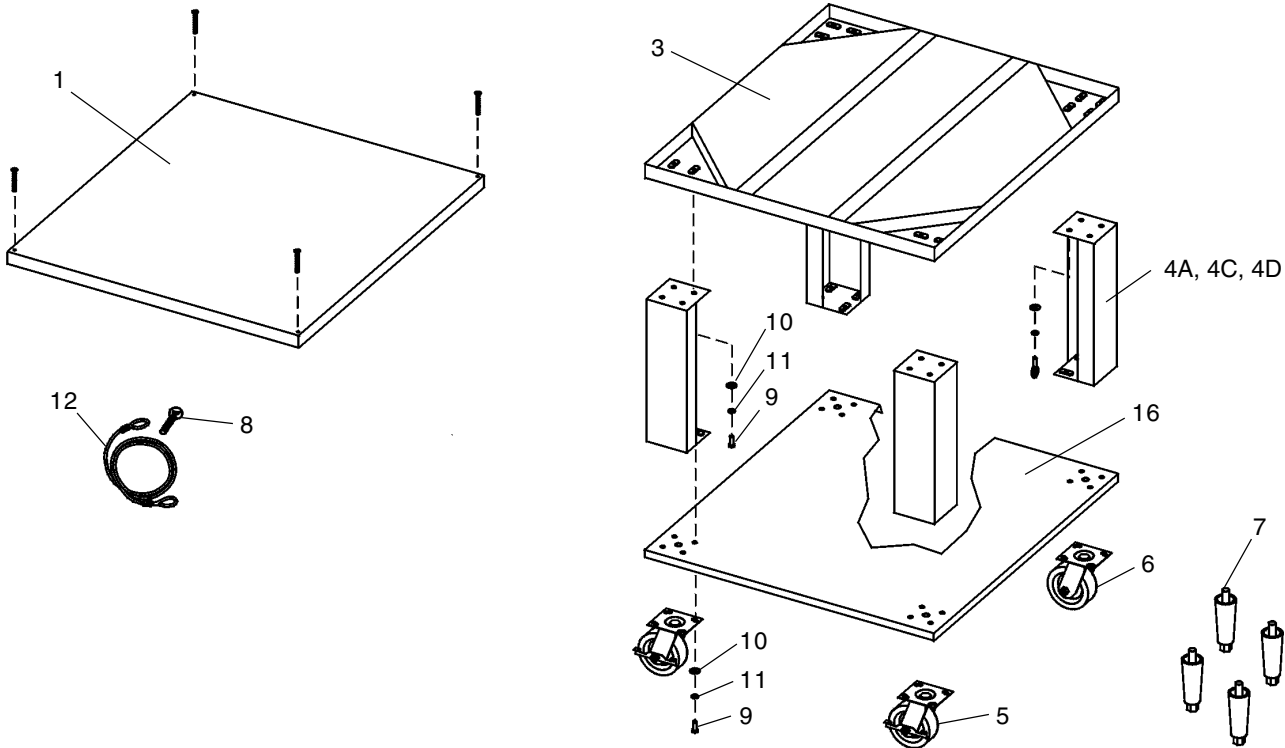
PS536ES ELECTRIC CONVEYOR OVEN KEY PARTS



| ITEM | QTYUSED | | P/N | DESCRIPTION |
|------|-------------|-----------|-------|--|
| | SINGLE BELT | TWIN BELT | | |
| 1 | 1 | 1 | 58504 | DIGITAL TEMPERATURE CONTROLLER |
| 2 | 1 | 2 | 58390 | CONVEYOR DRIVE MOTOR W/MAGNET |
| 3 | 1 | 2 | 58484 | KIT (2-BRUSHES, 2-CAPS) |
| 4 | 1 | 2 | 37337 | KIT, CONVEYOR SPEED CONTROLER |
| 5 | 2 | 2 | 33984 | KIT, THERMOCOUPLE 6" |
| 6 | 1 | 1 | 50517 | BELT, BLOWER, STANDARD RPM |
| 6A | 1 | 1 | 51428 | BELT, BLOWER, LOWER RPM |
| 7 | 1 | 1 | 44687 | MOTOR, BLOWER, 208/230V, 1/2HP |
| 8 | 1 | 1 | 33983 | HIGH LIMIT CONTROL MODULE, 240V |
| 9 | 1 | 1 | 36451 | COOLING FAN (BACKWALL) |
| 10 | 1 | 1 | 97525 | COOLING FAN (CONTROL COMPARTMENT) |
| 11 | 1 | 1 | 54953 | AIR SWITCH |
| 12 | 2 | 2 | 44914 | SOLID STATE RELAY WITH COOLING FAN 208V/240V |
| 13 | 2 | 2 | 44568 | SOLID STATE RELAY WITH COOLING FAN 380V/480V |
| 14 | 1 | 1 | 58238 | HEATER 208V 17kW |
| 15 | 1 | 1 | 50232 | HEATER 240V 17kW |
| 16 | 1 | 1 | 50587 | HEATER 380V 17kW |
| 17 | 1 | 1 | 50589 | HEATER 480V 17kW |

PS536ES OVEN INSTALLATION REQUIRED KITS AND EQUIPMENT

| TYPE OF INSTALLATION | PS536ES Single Oven Installation Kit P/N 58706 58707 (CE) | PS536ES Double Oven Installation Kit P/N 58708 58709 (CE) | PS536ES Triple Oven Installation Kit P/N 58710 58711 (CE) |
|----------------------|--|--|--|
| PS536ES Single Oven | 1 | | |
| PS536ES Double Oven | | 1 | |
| PS536ES Triple Oven | | | 1 |



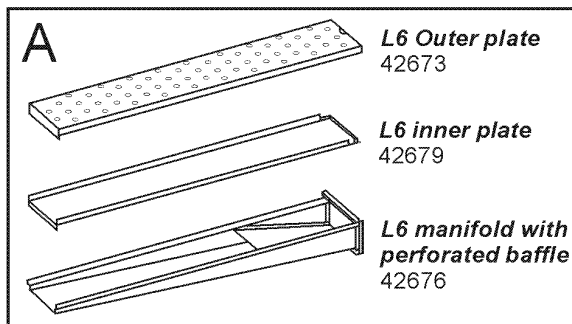
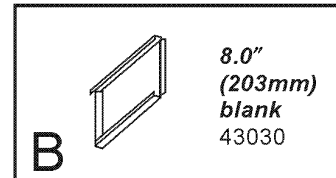
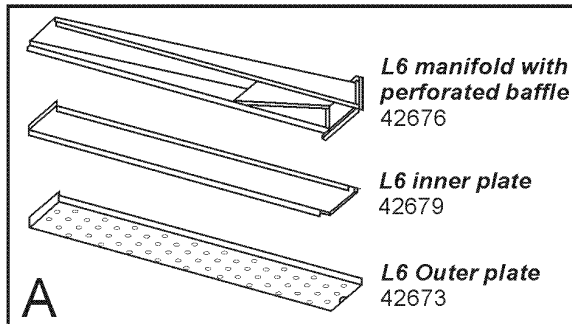
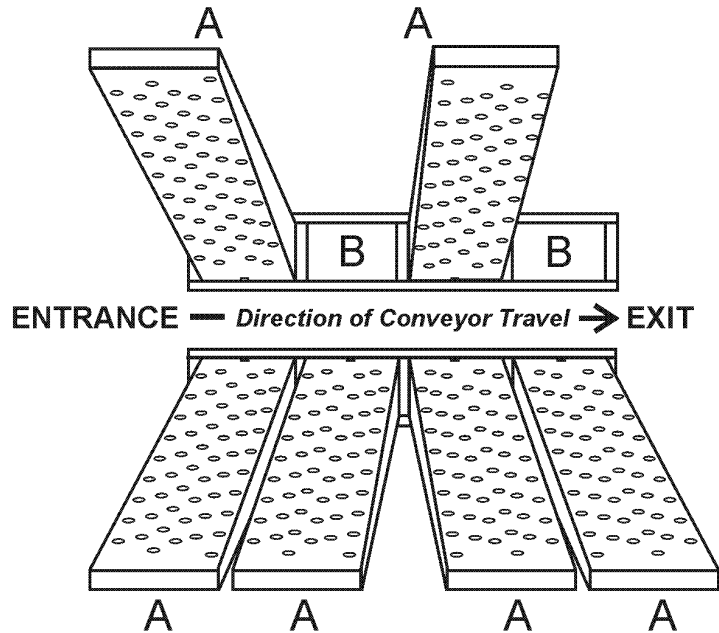
| Item | Qty. Single Oven | Qty. Double Oven | Qty. Triple Oven | Part No. | Inc. with domestic ovens? | Inc. with CE ovens? | Description |
|------|------------------|------------------|------------------|------------|---------------------------|---------------------|--|
| 1 | 1 | 1 | 1 | 48605 | Yes | Yes | Top panel |
| 3 | 1 | 1 | 1 | 51977 | Yes | Yes | Base pad |
| 4a | 4 | 4 | -- | 42890 | Yes | Yes | 17-1/2" (445mm) leg extension, for single and double ovens |
| 4c | -- | 4 | -- | 45329 | Yes | Yes | 25-1/2" (648mm) leg extension, optional |
| 4d | -- | -- | 4 | 44799 | Yes | Yes | 6" (152mm) leg extension, for triple ovens |
| 5 | 2 | 2 | 2 | 22290-0009 | Yes | No | Caster, with flat plate and brake |
| 6 | A/R | A/R | A/R | 22290-0010 | Yes | Yes | Caster, with flat plate (no brake) |
| 7 | 4 | 4 | 4 | 22450-0028 | No | Yes | Leg, adjustable, 6" (152mm) |
| 8 | 1 | 1 | 1 | 21392-0004 | Yes | No | Eyebolt, 3/4" |
| 9 | A/R | A/R | A/R | 220373 | Yes | Yes | Hex bolt, 3/8"-16 x 1" |
| 10 | 32 | 32 | 32 | 21416-0001 | Yes | Yes | Flat washer, 3/8" |
| 11 | 32 | 32 | 32 | 21422-0001 | Yes | Yes | Lockwasher, 3/8" |
| 12 | 1 | 1 | 1 | 22450-0228 | Yes | No | Restraint cable assembly |
| 16 | 1 | 1 | -- | 46393 | Yes | Yes | Lower shelf |

PS536

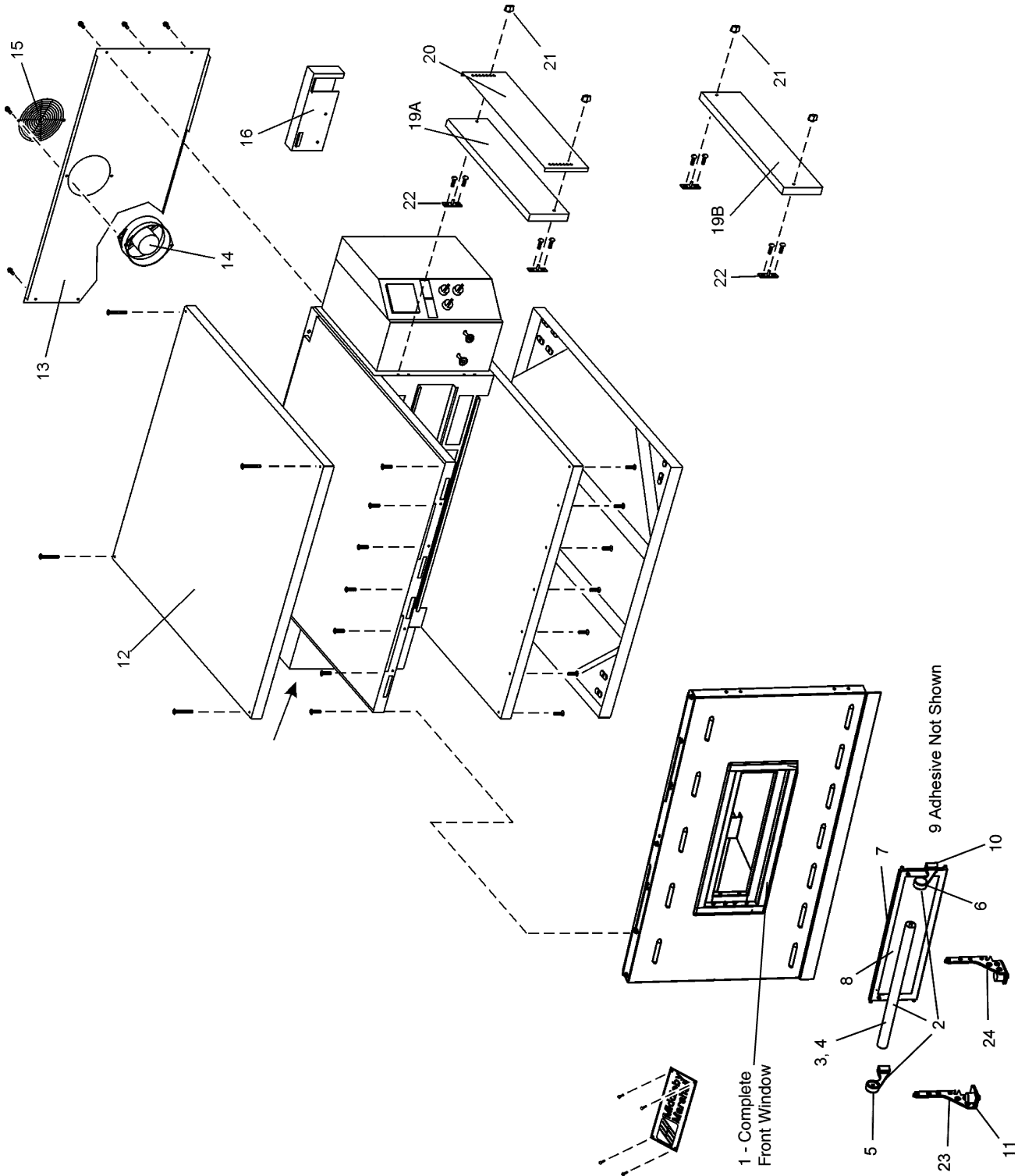
Standard Air finger configuration

NOTE: Left-to-Right configuration is shown.

For Right-to-Left conveyors, "mirror" the placement of the fingers.



View of PANELS, END PLUGS and WINDOW

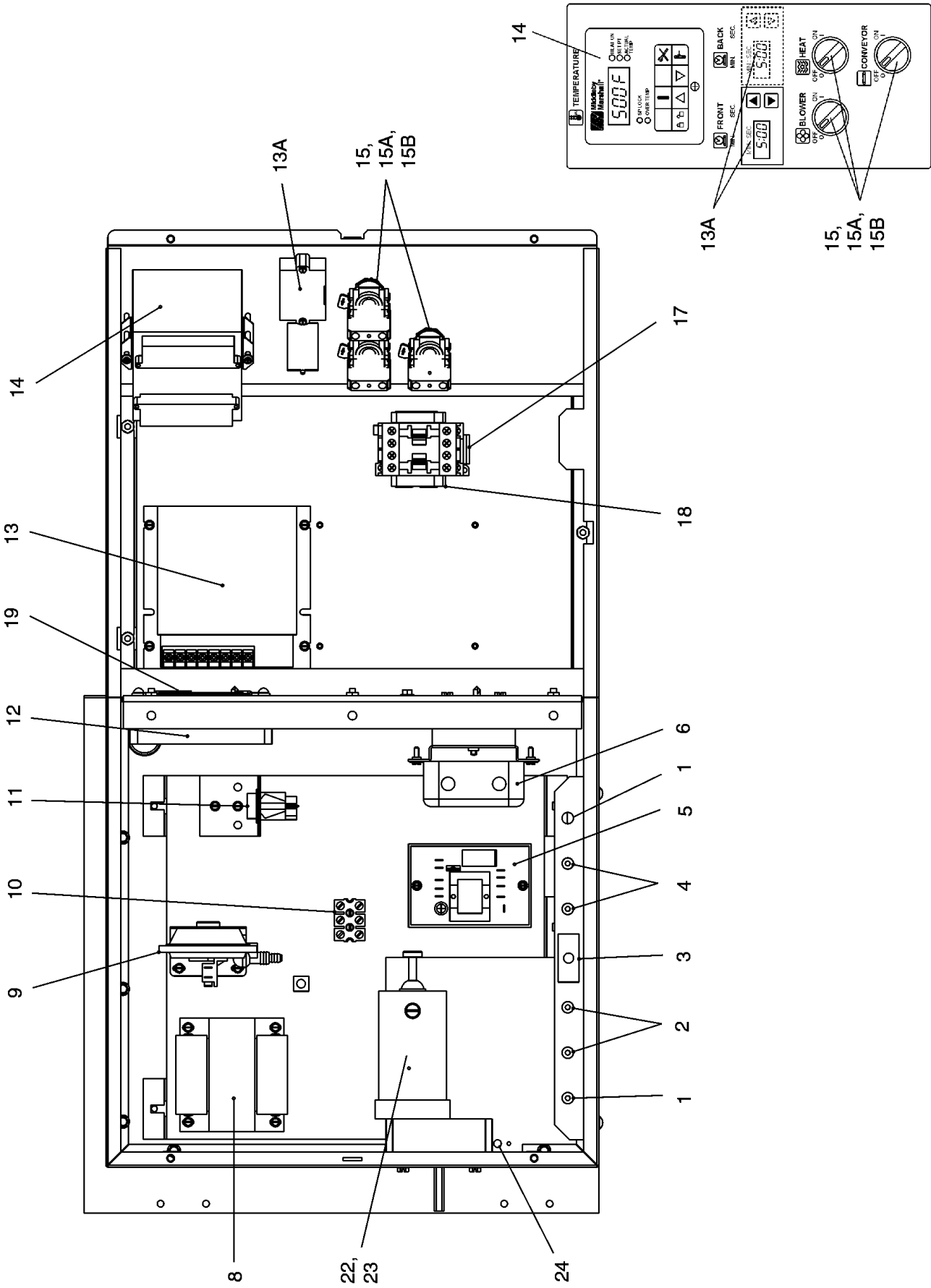


Parts for PANELS, END PLUGS and WINDOW

| ITEM QTY. | P/N | DESCRIPTION |
|------------------|------------|--|
| 1 | 51054 | ASSEMBLY, WINDOW, w/HANDLE, ITEMS 1-10 |
| 2 | 51081 | ASSEMBLY, HANDLE, ITEMS 3-6 |
| 3 | M10092 | HANDLE, OUTER |
| 4 | M10127 | HANDLE, INNER THREADED |
| 5 | M1115 | HANDLE, BRACKET (LEFT) |
| 6 | M1116 | HANDLE, BRACKET (RIGHT) |
| 7 | 51087 | FRAME AND WINDOW, ITEMS 8-9 |
| 8 | M10198 | GLASS, 4.1" X 15.150" |
| 9 | M1965 | ADHESIVE (NOT SHOWN) |
| 10 | M1118 | SCREW--ATTACHES HANDLE |
| 11 | 30927 | BUMPER |
| 12 | 48605 | TOP PANEL |

| ITEM QTY. | P/N | DESCRIPTION |
|------------------|---------------|-------------------------------|
| 13 | 47633 | BACK WALL |
| 14 | 36451 | COOLING FAN |
| 15 | 31497 | FINGER GUARD, COOLING FAN |
| 16 | See pp. 18-21 | CHAIN COVER, UPPER |
| 19A | 50161 | END PLUG, TOP |
| 19B | 48622 | END PLUG, BOTTOM |
| 20 | 42771 | SLIDE, OUTER SIDE |
| 21 | 36452 | WING NUT, PLASTIC |
| 22 | 48640 | BRACKET, END PLUG MOUNTING |
| 23 | 51210 | BRACKET, WINDOW HINGE (LEFT) |
| 24 | 51211 | BRACKET, WINDOW HINGE (RIGHT) |

View of Right-hand Electrical Compartment

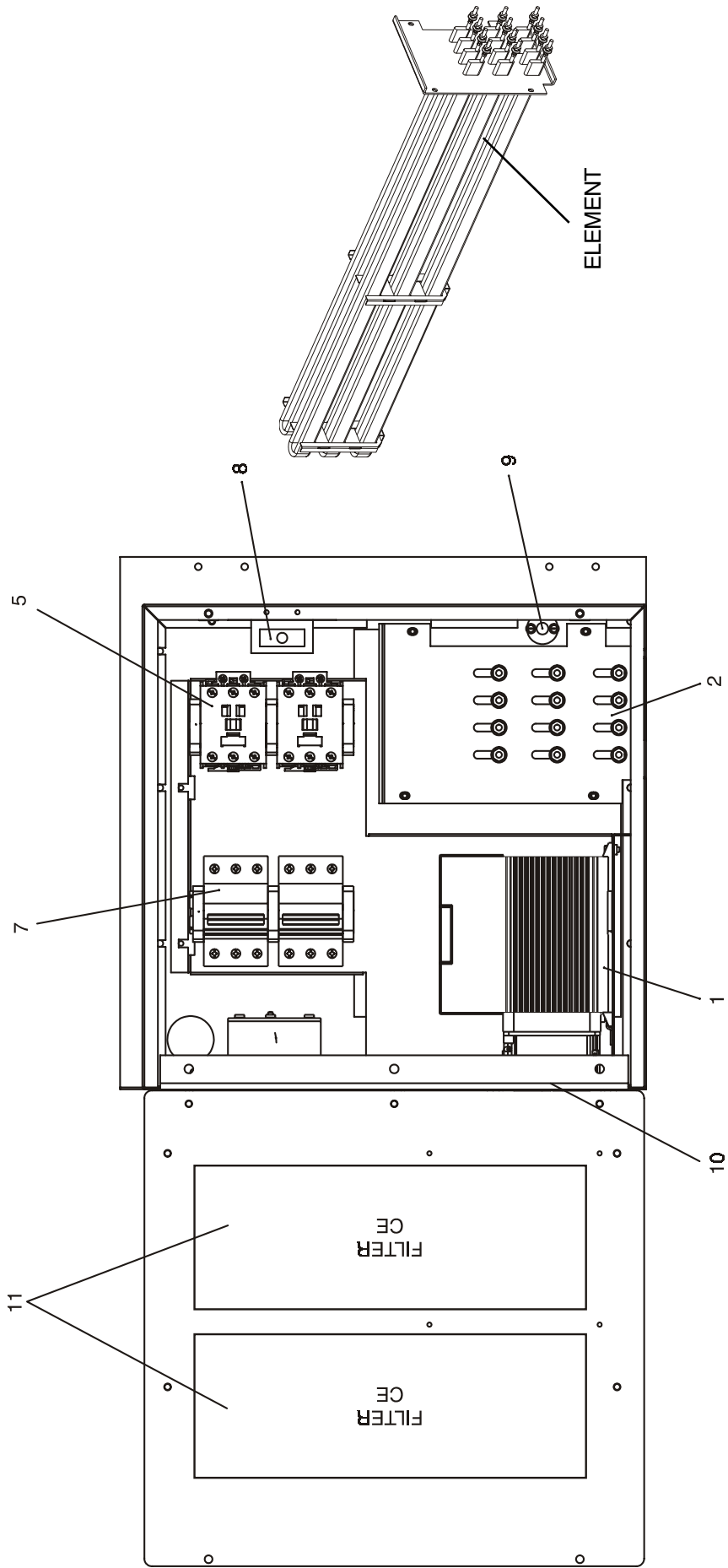


Parts for Right-hand Electrical Compartment

| ITEM | QTY. | P/N | DESCRIPTION |
|------|--------|------------|---|
| 1 | 1 OR 2 | 48635 | BREAKER, CIRCUIT 240V 0.3A |
| 2 | 2 | 46831 | BREAKER, CIRCUIT 240V 8A |
| 3 | 1 | 28021-0047 | SWITCH, INTLCK 10A NO2P |
| 4 | 2 | 45036 | BREAKER, CIRCUIT 240V 3A |
| 5 | 1 | 33983 | CNTRL, ELEC HI-LIMIT 240V |
| 6 | 1 | 33813 | FILTER, RFI TYPE F1780DD20 |
| 8 | 1 | 31504 | TFMR, 230V(P) / 120V(S) 200VA |
| 9 | 1 | 54953 | SWITCH, AIR .16 IN. WC |
| 10 | 1 | 44390 | BLOCK, TERM 600V 50A 3 POLE |
| 11 | 1 | 35145 | SWITCH, PB MOLVENO 250V, WITH GREEN LIGHT |
| 12 | 1 | 97525 | FAN, 230V |
| 13 | 1 OR 2 | 37337 | KIT, CONVEYOR SPEED CONTROLLER WITH DIGITAL DISPLAY (INC. ITEM 13A) |
| 13A | 1 OR 2 | 37503 | DIGITAL DISPLAY ONLY |
| 14 | 1 | 58504 | CONTROL, COMBO 4-20MA, BURST (47321) |
| 15 | 3 | 46521 | KIT, SELECTOR SWITCH WITH KNOB AND CONTACT BLOCK |
| 15A | 3 | 44697 | CONTACT BLOCK |
| 15B | 3 | 44696 | SELECTOR SWITCH |

| ITEM | QTY. | P/N | DESCRIPTION |
|------|--------|------------|--|
| 17 | 1 | 28041-0011 | CONTACTOR, 208/240V |
| 18 | 2 | 33363 | END, STOP ENTRELEC |
| 19 | 1 | 27470-0004 | GUARD, FINGER |
| 20 | 2 | 27480-0001 | TERMINAL BLOCK, 2-POLE |
| 22 | 1 OR 2 | 38185 | SENSOR PICKUP |
| 22A | 1 OR 2 | 22450-0248 | BRACKET-PICKUP SENSOR |
| 22B | 1 OR 2 | 220416 | CLAMP-SECURES BRACKET |
| 23 | 1 OR 2 | 58390 | MOTOR, CONVEYOR DRIVE WITH 2-POLE MAGNET |
| 23A | 1 OR 2 | 39002 | MAGNET 2-POLE |
| 23B | 1 OR 2 | 310-0017 | ADHESIVE |
| 23C | 1 OR 2 | 300-2757 | CONVEYOR DRIVE MOTOR-ONLY |
| 23D | 1 OR 2 | 58484 | KIT, 2 BRUSHES & 2 CAPS |
| 23E | 2 OR 4 | 30153 | BRUSH, SOLD INDIVIDUALLY, QTY 2 REQUIRED |
| 24 | 1 | 33984 | KIT, THERMOCOUPLE (33812-1) |

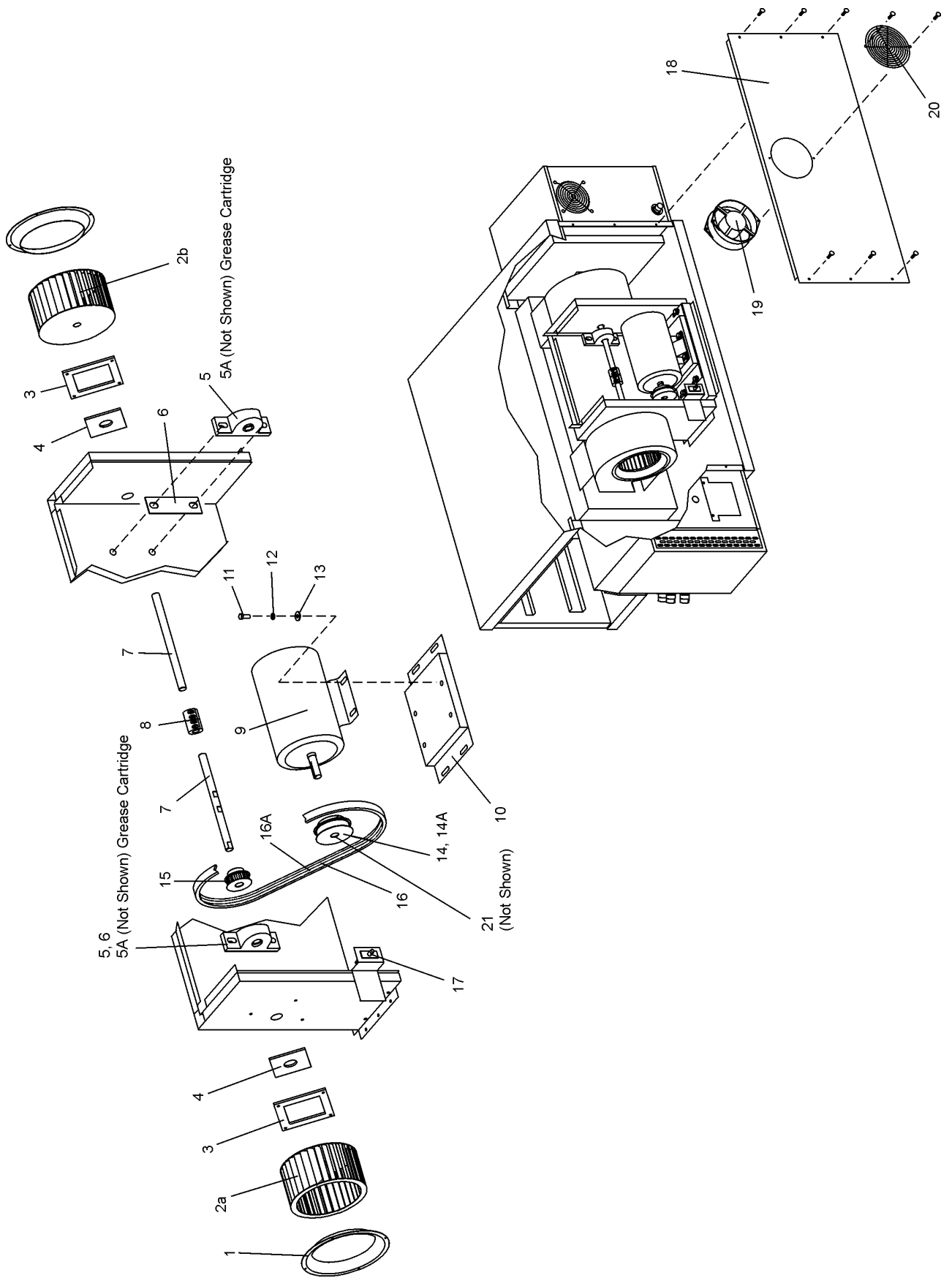
View of Left-hand Electrical Compartment



Parts for Left-hand Electrical Compartment

| ITEM | QTY. | P/N | DESCRIPTION |
|------|------|------------|--|
| 1 | 2 | 44914 | SOLID STATE RELAY WITH COOLING FAN, 208-240V |
| 1 | 2 | 44568 | SOLID STATE RELAY WITH COOLING FAN, 380-480V |
| 2 | 1 | 58238 | WLDMT, HTG ELE 208V 17KW 536ES |
| 2 | 1 | 50232 | WLDMT, HTG ELE 240V 17KW 536ES |
| 2 | 1 | 50587 | WLDMT, HTG ELE 380V 17KW 536ES |
| 2 | 1 | 50589 | WLDMT, HTG ELE 480V 17KW 536ES |
| 5 | 2 | 45019 | BREAKER, CKT 480VAC 63A 3POLE |
| 7 | 2 | 44549 | CONTACTOR, 230V AC COIL 85A |
| 8 | 1 | 28021-0047 | SWITCH, INTLCK 10A NO2P |
| 9 | 1 | 33984 | TC, TYPE "J" SHIELDED 6.00X120" (33812-1) |
| 10 | 2 | 58212 | GUARD, FINGER |
| 11 | 2 | 58131 | FILTER, CE ONLY |

View of Rear Compartment and Blowers



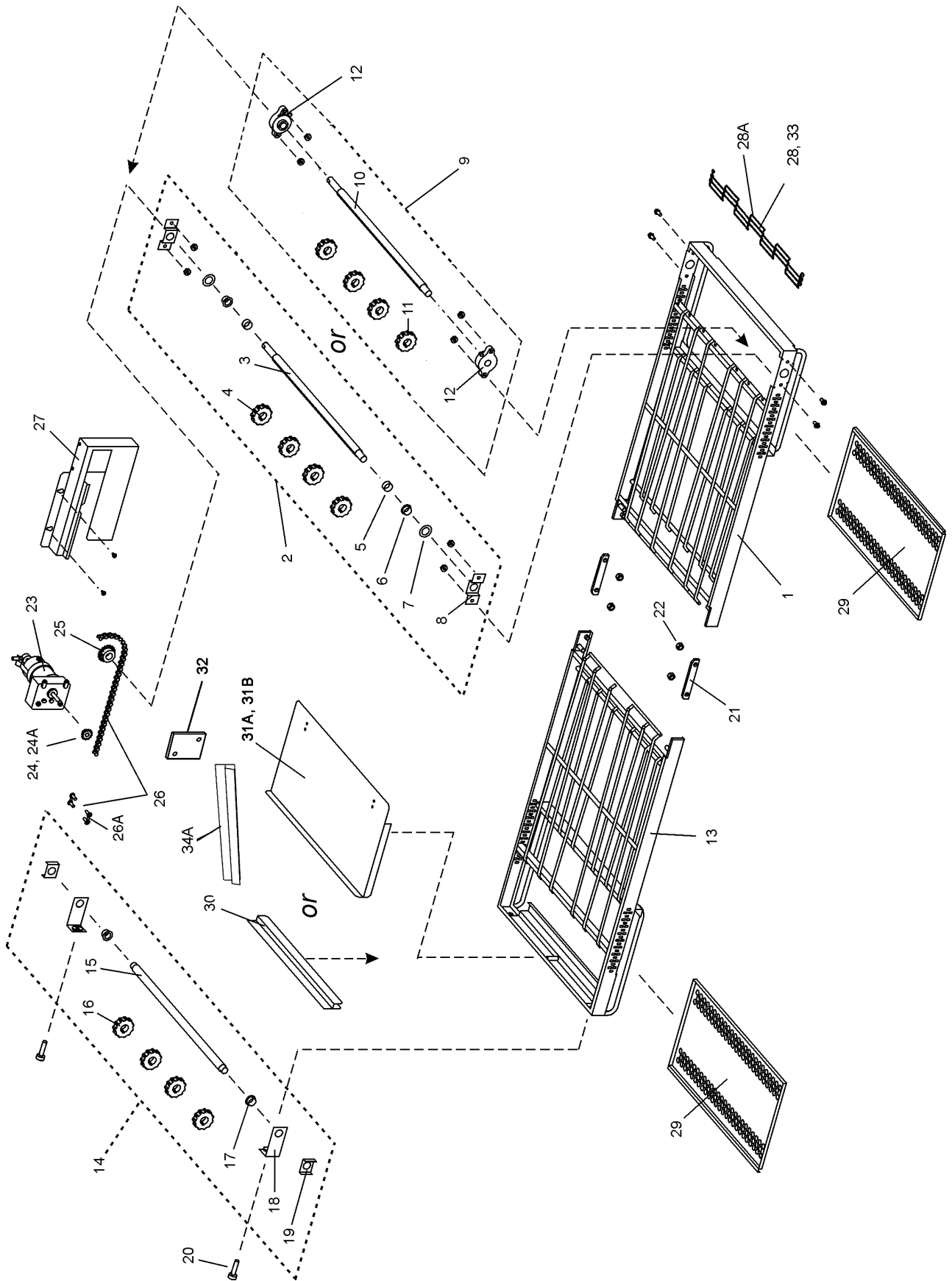
Parts for Rear Compartment and Blowers

| ITEM QTY. | P/N | DESCRIPTION | ITEM QTY. | P/N | DESCRIPTION | |
|-----------|-----|-------------|-----------|-----|-------------|---|
| 1 | 2 | 42951 | 11 | 4 | A3896 | SCREW, HEX CAP HEAD 5/16"-18 X 7/8" |
| 2a | 1 | 42752 | 12 | 4 | B301A8847 | FLAT WASHER, 5/16" |
| | | | 13 | 4 | A3682 | LOCK WASHER, 5/16" |
| 2b | 1 | 42753 | 14 | 1 | 50260* | PULLEY-MOTOR (STANDARD RPM) 2.487" DIA. |
| 3 | 2 | 42999 | 14A | 1 | 50224* | PULLEY-MOTOR (LOWER RPM) 1.80" DIA. |
| 4 | 2 | 35121-0045 | 15 | 1 | 50224* | PULLEY, BLOWER SHAFT 1.80" DIA. |
| 5 | 2 | 22072-0025 | 16 | 1 | 50517* | BELT, (50/60Hz) (STANDARD RPM) |
| 5A | -- | 17110-0015 | 16A | 1 | 51428* | BELT (LOWER RPM) |
| 6 | 2 | 50160 | 17 | 1 | 28021-0061 | SAFETY SWITCH |
| 7 | 2 | 50151 | 18 | 1 | 47633 | BACK WALL |
| 8 | 1 | 44748 | 19 | 1 | 36451 | COOLING FAN |
| 9 | 1 | 44687 | 20 | 1 | 31497 | FINGER GUARD, COOLING FAN |
| 10 | 1 | 44688 | 21 | 1 | 50259* | BUSHING (STANDARD RPM)-SPLIT TAPER |

* SEE BELOW

| RPM | RPM KIT P/N | OVEN MODEL | HERTZ | MOTOR PULLEY W/SPLIT BUSHING | MTR PULLEY P/N SPLIT BUSH P/N | BLWR SHAFT PULLEY DESCRIPTION | BLWR SHAFT PULLEY | BELT SIZE DESCRIPTION | BELT P/N | RPM OF FAN |
|-------|-------------|------------|-------|------------------------------|-------------------------------|-------------------------------|-------------------|-----------------------|----------|--------------|
| STD | 50256 | PS536GS | 60 | POLY G BUSHING | 50260 50259 | POLY V | 50224 | POLY V | 50517 | 2400 1950 |
| LOWER | 51427 | PS536GS | 60 | POLY V | 50224 | POLY V | 50224 | POLY V | 51428 | 1725 |

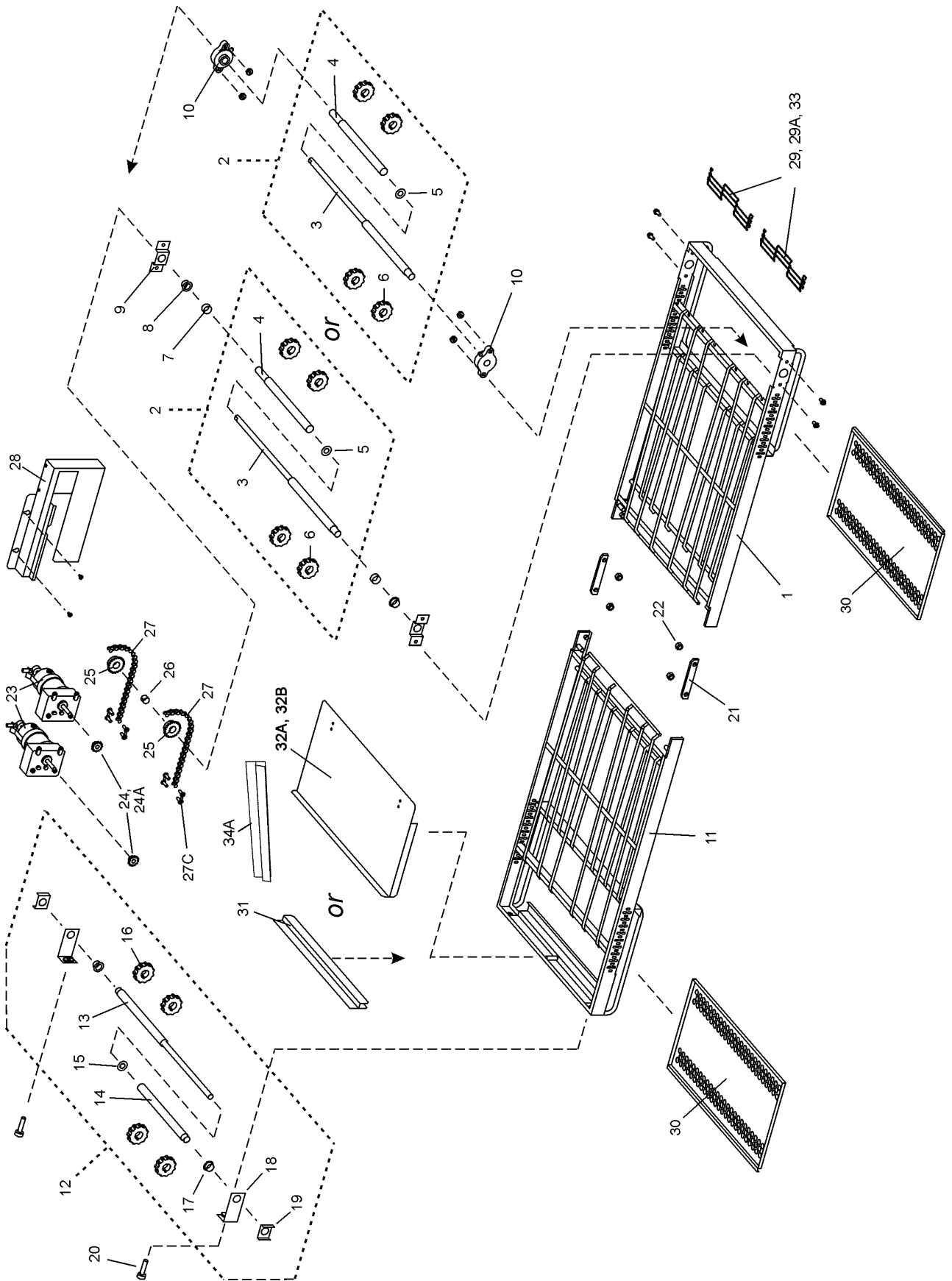
View of Single-Belt Conveyor - Standard Speed (3-30 Minutes), High Speed (1-10 minutes)



Parts for Single-Belt Conveyor - Standard Speed (3-30 Minutes), High Speed (1-10 minutes)

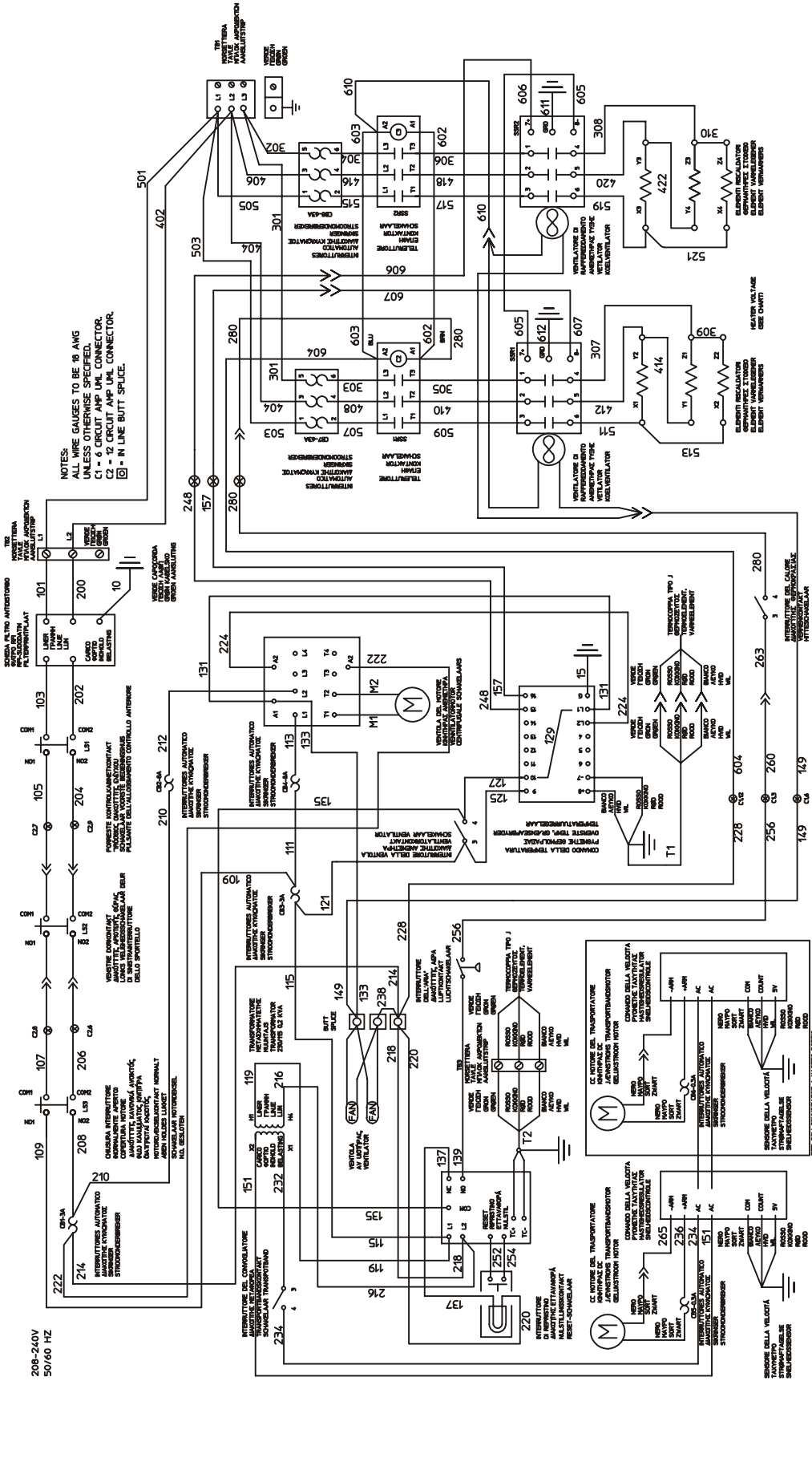
| ITEM QTY. | P/N - 60" | | DESCRIPTION | P/N - 76" | |
|-----------|-----------|-------------|--|-------------------|-------------|
| | CONVEYOR | CONVEYOR | | CONVEYOR | CONVEYOR |
| 1 | 48847 | < - - - - - | FRAME, DRIVESIDE | 48790 | < - - - - - |
| 2 | 1 | < - - - - - | ASSEMBLY, STANDARD DRIVE SHAFT (INC. ITEMS 3-8) | 48797 | < - - - - - |
| 3 | 1 | < - - - - - | DRIVE SHAFT | 48781 | < - - - - - |
| 4 | 4 | < - - - - - | SPROCKET, CONV. BELT | 22229-0003 | < - - - - - |
| 5 | 2 | < - - - - - | SPACER | 43275 | < - - - - - |
| 6 | 2 | < - - - - - | BUSHING, BRONZE 5/8" I.D. | 22034-0003 | < - - - - - |
| 7 | 2 | < - - - - - | SPACER, NYLON | 35000-1080 | < - - - - - |
| 8 | 2 | < - - - - - | BRACKET, DRIVESUPPORT | 49972 | < - - - - - |
| 9 | 1 | < - - - - - | ASSEMBLY, HIGH SPEED DRIVE SHAFT (INC. ITEMS 10-11) | 48782 | < - - - - - |
| 10 | 1 | < - - - - - | DRIVE SHAFT | 48781 | < - - - - - |
| 11 | 4 | < - - - - - | SPROCKET, CONV. BELT | 22229-0003 | < - - - - - |
| 12 | 2 | < - - - - - | FLANGE BEARING (HIGH SPEED ONLY) | 45377 | < - - - - - |
| 13 | 1 | 48746 | FRAME, IDLER SIDE | 48795 | < - - - - - |
| 14 | 1 | 48780 | ASSEMBLY, IDLER SHAFT (INC. ITEMS 15-19) | 48780 | < - - - - - |
| 15 | 1 | < - - - - - | IDLER SHAFT | 48779 | < - - - - - |
| 16 | 4 | < - - - - - | SPROCKET, CONV. BELT | 22229-0003 | < - - - - - |
| 17 | 2 | < - - - - - | BUSHING, BRONZE 5/8" I.D. | 22034-0003 | < - - - - - |
| 18 | 2 | 37000-0413 | BRACKET, IDLER ADJUSTMT. | 37000-0413 | < - - - - - |
| 19 | 2 | < - - - - - | BRACKET, IDLER SUPPORT | 54947 | < - - - - - |
| 20 | 2 | 35000-1008 | SCREW, IDLER ADJUSTMENT | 35000-1008 | < - - - - - |
| 21 | 2 | < - - - - - | PIVOT PLATE | 50792 | < - - - - - |
| 22 | 4 | < - - - - - | LOCK NUT, HEX 3/8"-16 SS | 21176-0002 | < - - - - - |
| 23 | | | DRIVE MOTOR | SEE PAGES 12 & 13 | |
| 23A | | | PICKUP, SENSOR | SEE PAGES 12 & 13 | |
| 24 | 1 | < - - - - - | SPROCKET, CONVEYOR DRIVE MOTOR, 20T (STANDARD SPEED) .317 BORE | 34128 | < - - - - - |
| 24A | 1 | < - - - - - | SPROCKET, 22T (HIGH SPEED) .314 BORE | 38215 | < - - - - - |
| 25 | 1 | < - - - - - | SPROCKET, SHAFT DRIVE SHAFT, 20T 5/8 BORE | 22159-0003 | < - - - - - |
| 26 | 1 | 50050 | ASSEMBLY, DRIVE CHAIN (INC. ITEM 26a) | 50052 | < - - - - - |
| 26A | 1 | < - - - - - | MASTER LINK, DRIVE CHAIN | 3101212 | < - - - - - |
| 27 | 1 | 48851 | ASSEMBLY, CHAIN COVER-FOR OVENS WITH RIGHT-SIDE CONTROLS | 50029 | < - - - - - |
| 28 | 1 | 50057 | BELT, CONVEYOR, 18"/457mm, STANDARD | 50059 | < - - - - - |
| 28A | A/R | < - - - - - | 12" SECTION OF BELT | 8500236 | < - - - - - |
| 29 | 2 | 48707 | CRUMB PAN W/HOLES, ENTRANCE & EXIT | 48708 | < - - - - - |
| 30 | 1 | 50044 | END STOP | 50044 | < - - - - - |
| 31A | 1 | 50040 | EXIT TRAY, 8"/203mm | 50040 | < - - - - - |
| 31B | 1 | 50023 | EXIT TRAY, 20"/508mm | 50023 | < - - - - - |
| 32 | 1 | 50235 | PLATE MOTOR COVER ASSY | 50235 | < - - - - - |
| 33 | 1 | 58391 | KIT, MASTER LINK | 58391 | < - - - - - |
| 34A | 1 | 30830 | SIDE STOP, LEFT | 30830 | < - - - - - |

View of Split Belt Conveyor - Standard Speed (3-30 Minutes), High Speed (1-10 minutes)



Parts for Split Belt Conveyor - Standard Speed (3-30 Minutes), High Speed (1-10 minutes)

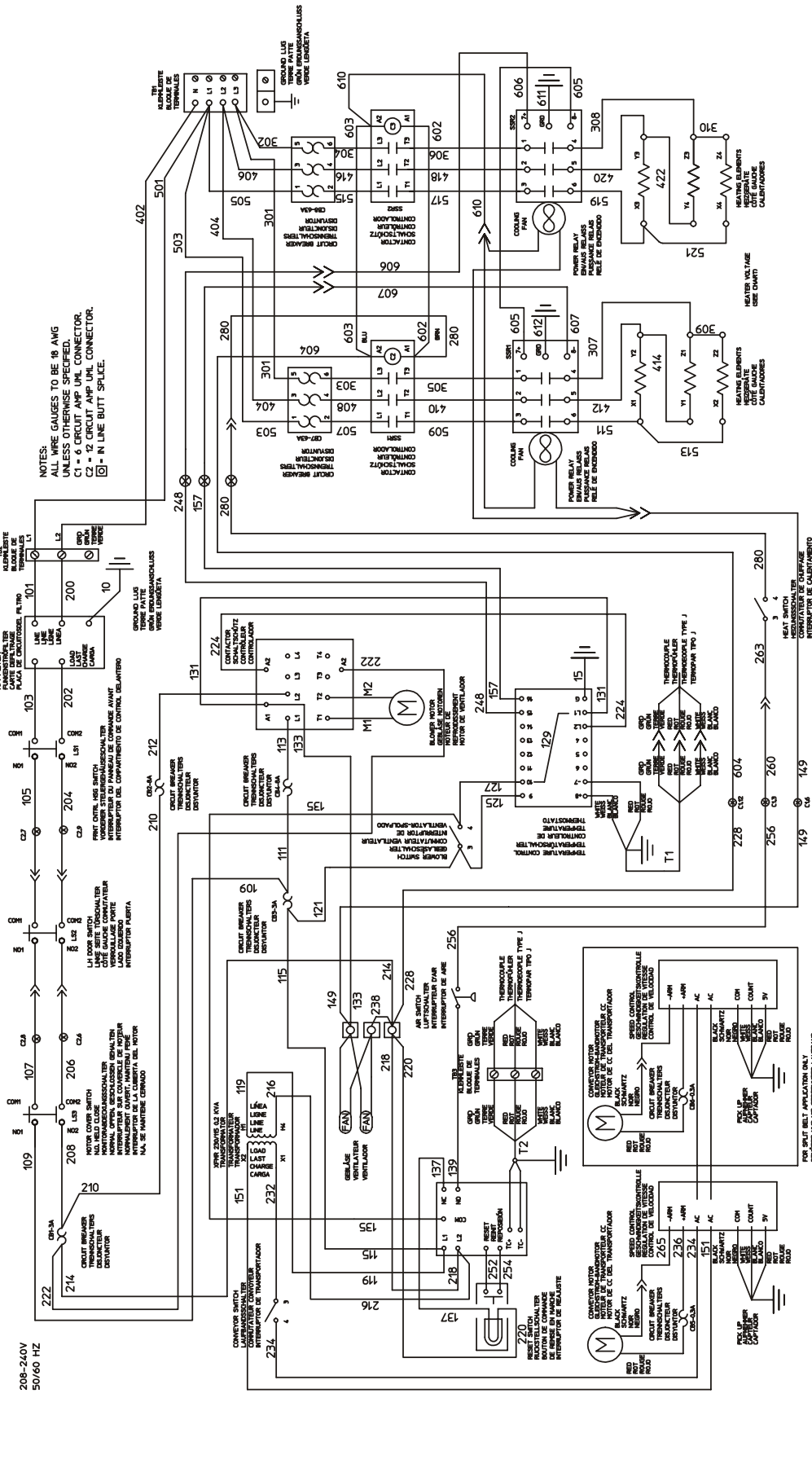
| ITEM QTY. | P/N - 60" CONVEYOR | P/N - 76" CONVEYOR | DESCRIPTION | ITEM QTY. | P/N - 60" CONVEYOR | P/N - 76" CONVEYOR | DESCRIPTION | |
|-----------|-----------------------|-----------------------|---|-----------|-----------------------|-----------------------|--|---------------------|
| 1 | 48847 | 48790 | FRAME, DRIVESIDE | 23 | SEE PAGES 12 & 13 | --- | DRIVE MOTOR | |
| 2 | <----- | 48759 | ASSEMBLY, SPLIT DRIVE SHAFT, STANDARD AND HIGH SPEED (INC. ITEMS 3-6) | 23A | SEE PAGES 12 & 13 | --- | PICKUP, SENSOR | |
| 3 | <----- | 49969 | SPLIT DRIVE SHAFT - MAIN | 24 | <----- | 34128 | SPROCKET, CONVEYOR DRIVE MOTOR, 20T (STANDARD SPEED) .317 BORE | |
| 4 | <----- | 48837 | SPLIT DRIVESHAFT - SLEEVE | 24A | <----- | 38215 | SPROCKET, 22T (HIGH SPEED) .314 BORE | |
| 5 | <----- | 21415-0001 | FLAT WASHER, BRONZE | 25 | <----- | 22159-0003 | SPROCKET, CONVEYOR DRIVE SHAFT, 20T (STANDARD AND HIGH SPEED) | |
| 6 | <----- | 22229-0003 | SPROCKET, CONV. BELT | 26 | <----- | 35900-0023 | BUSHING, DRIVES PROCKET | |
| 7 | <----- | 43275 | SPACER (STANDARD SPEED ONLY) | 27A | 50050 | 50053 | ASSEMBLY, DRIVE CHAIN, REAR BELT (LONG - INC. ITEM 27C) 20" | |
| 8 | <----- | 22034-0003 | BUSHING, BRONZE 5/8" I.D. (STANDARD ONLY) | 27B | 50051 | 50052 | ASSEMBLY, DRIVE CHAIN, FRONT BELT (SHORT - INC. ITEM 27C) 12" | |
| 9 | <----- | 49972 | BRACKET, DRIVE SUPPORT (STANDARD ONLY) | 27C | <----- | 3101212 | MASTER LINK, DRIVE CHAIN | |
| 10 | <----- | 45377 | FLANGE BEARING (HIGH SPEED ONLY) | 28 | 48851 | 50029 | ASSEMBLY, CHAIN COVER | |
| 11 | 48746 | 48795 | FRAME, IDLERSIDE | 29 | 50056 | 50058 | BELT, CONVEYOR, 9"/229mm, STANDARD | |
| 12 | <----- | 48769 | ASSEMBLY, SPLIT IDLER SHAFT (INC. ITEMS 13-19) | 29A | A/R | <----- | 37022 | 12" SECTION OF BELT |
| 13 | <----- | 49968 | SPLIT IDLER SHAFT - MAIN | 30 | 48707 | 48708 | CRUMB PAN, W/HOLES, ENTRANCE & EXIT | |
| 14 | <----- | 48778 | SPLIT IDLER SHAFT - SLEEVE | 31 | 50044 | 50044 | END STOP | |
| 15 | <----- | 21415-0001 | FLAT WASHER, BRONZE | 32A | 50040 | 50040 | EXIT TRAY, 8"/203mm | |
| 16 | <----- | 22229-0003 | SPROCKET, CONV. BELT | 32B | 50023 | 50023 | EXIT TRAY, 20"/508mm | |
| 17 | <----- | 22034-0003 | BUSHING, BRONZE 5/8" I.D. | 33 | <----- | 37020 | KIT, MASTER LINK | |
| 18 | <----- | 37000-0413 | BRACKET, IDLER ADJUSTMT. | 34A | 30830 | 30830 | SIDESTOP, LEFT | |
| 19 | <----- | 54947 | BRACKET, IDLER SUPPORT | | | | | |
| 20 | <----- | 35000-1008 | SCREW, IDLER ADJUSTMENT | | | | | |
| 21 | <----- | 50792 | PIVOT PLATE | | | | | |
| 22 | <----- | 21176-0002 | LOCK NUT, HEX 3/8" - 16SS | | | | | |



208-240V
50/60 HZ

NOTES:
ALL WIRE GAUGES TO BE 18 AWG
UNLESS OTHERWISE SPECIFIED.
C1 = 6 CIRCUIT AMP UML CONNECTOR.
C2 = 12 CIRCUIT AMP UML CONNECTOR.
⊠ = IN LINE BUTT SPLICE.

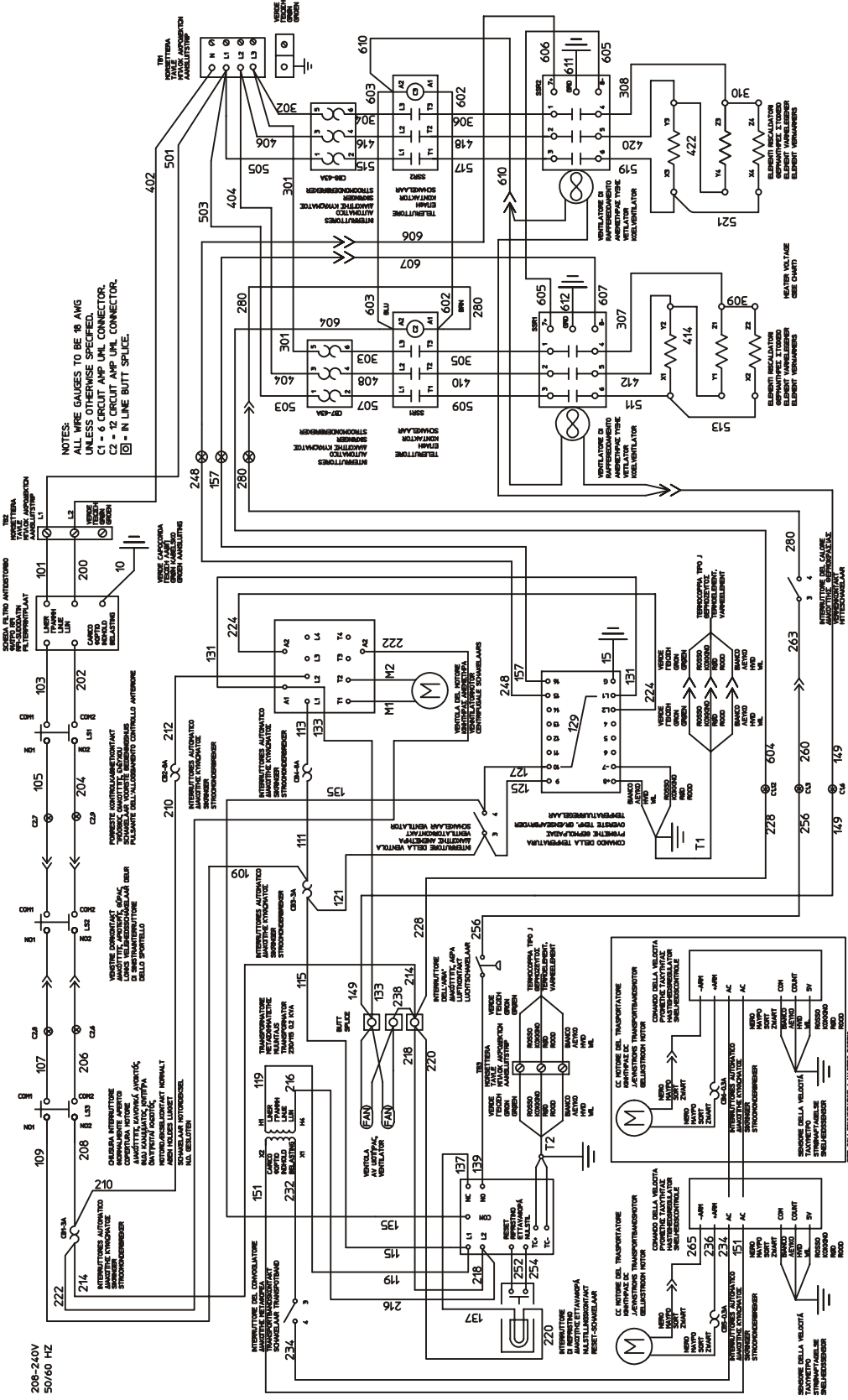
| VOLTAGE | TOTAL KILOWATTS | | |
|---------|-----------------|-------|-------|
| | L1 | L2 | L3 |
| 208 | 17.0 | 53.19 | 47.19 |
| 235 | 17.0 | 71.2 | 65.2 |
| 240 | 17.0 | 46.9 | 40.9 |
| | 235 | 62.5 | 56.5 |

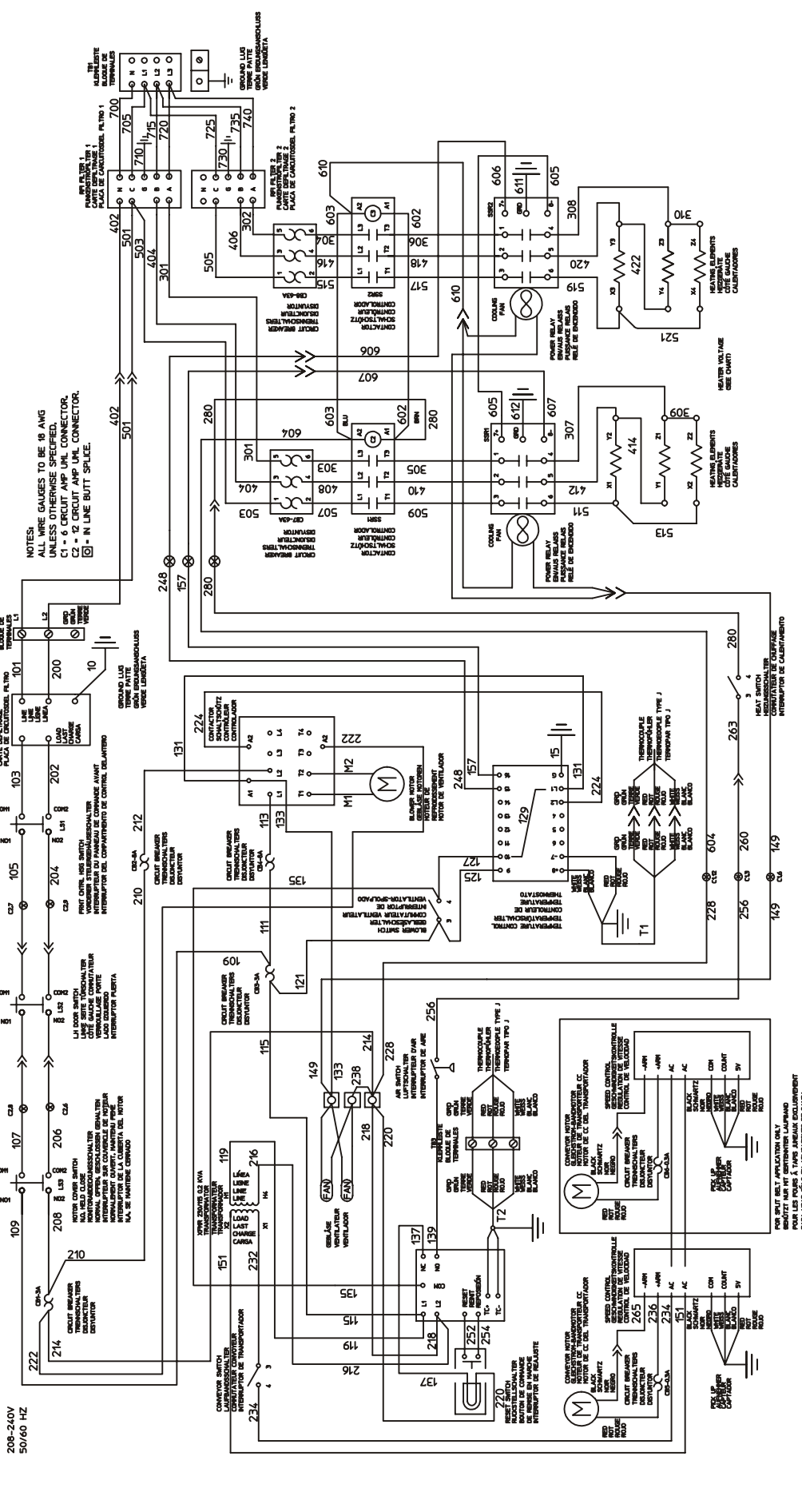


| VOLTAGE | TOTAL KILOWATTS | PHASE | L1 | L2 | L3 | N |
|---------|-----------------|-------|------|------|------|-----|
| 380 | 17.0 | 3 | 31.8 | 25.8 | 25.8 | 6.0 |
| 480 | 23.5 | 3 | 41.7 | 35.7 | 35.7 | 6.0 |
| | 17.0 | 3 | 26.5 | 20.5 | 20.5 | 6.0 |
| | 23.5 | 3 | 34.3 | 28.3 | 28.3 | 6.0 |

58267C

Middleby PS536ES Wiring Diagram E380-480 Volt, 3 Phase ENG/UK/GM/FR/SP

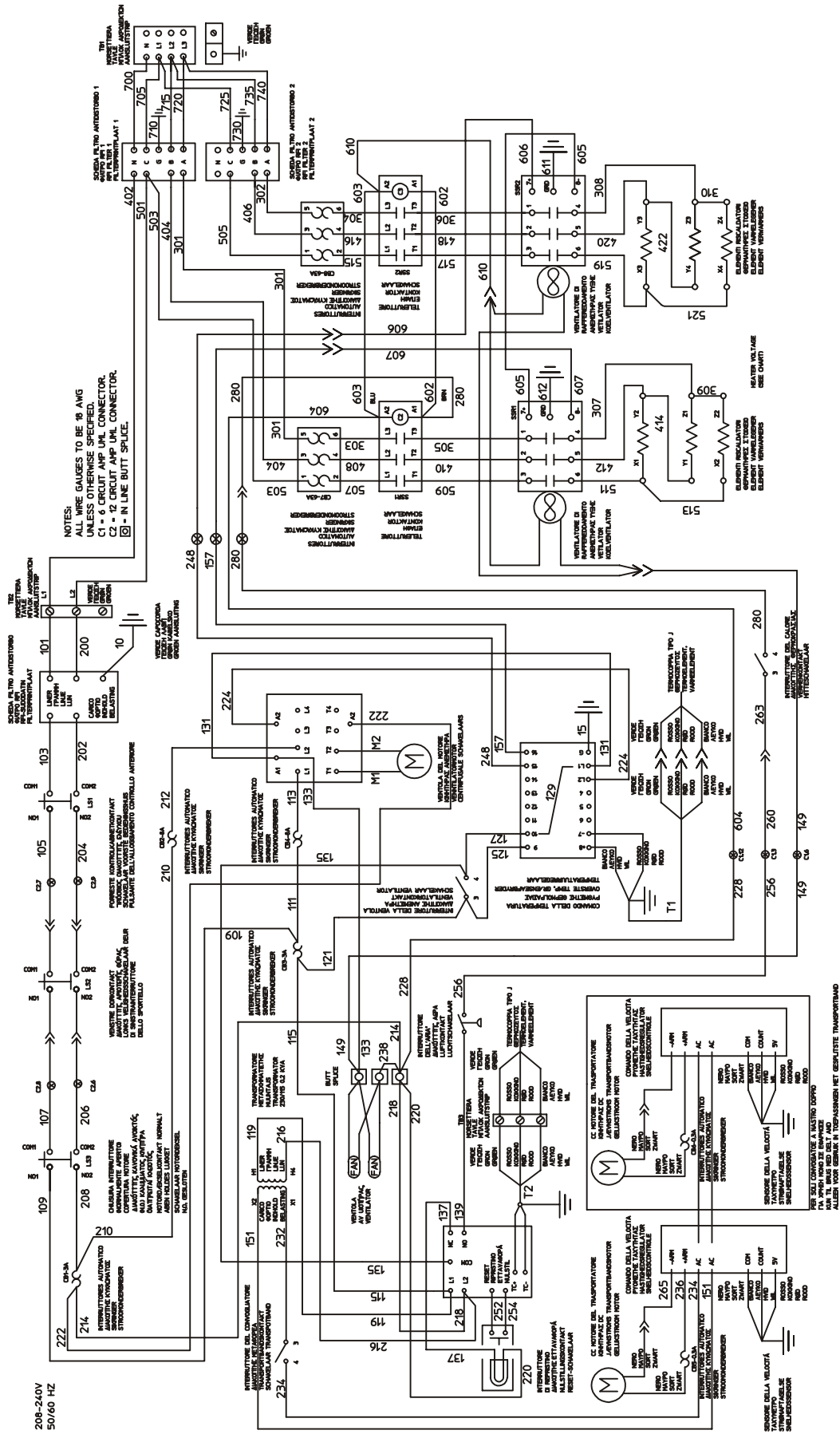




| VOLTAGE | TOTAL KILOWATTS | PHASE | L1 | L2 | L3 | N |
|---------|-----------------|-------|------|------|------|-----|
| 380 | 17.0 | 3 | 31.8 | 25.8 | 25.8 | 6.0 |
| | 23.5 | 3 | 41.7 | 35.7 | 35.7 | 6.0 |

58330C

Middleby PS536ES Wiring Diagram E380V CE, 3 Phase UK/GM/FR/SP



NOTES:
 ALL WIRE GAUGES TO BE 18 AWG
 UNLESS OTHERWISE SPECIFIED.
 C1 = 0 CIRCUIT AMP UHL CONNECTOR.
 C2 = 12 CIRCUIT AMP UHL CONNECTOR.
 ⊠ = IN LINE BUTT SPICE.

208-240V
 50/60 HZ

| VOLTAGE | TOTAL KILOWATTS | PHASE | L1 | L2 | L3 | N |
|---------|-----------------|-------|------|------|------|-----|
| 380 | 17.0 | 3 | 31.8 | 25.8 | 25.8 | 6.0 |
| | 23.5 | 3 | 41.7 | 35.7 | 35.7 | 6.0 |

Middleby PS536ES Wiring Diagram E380V CE, 3 Phase IT/GR/DN/DU

