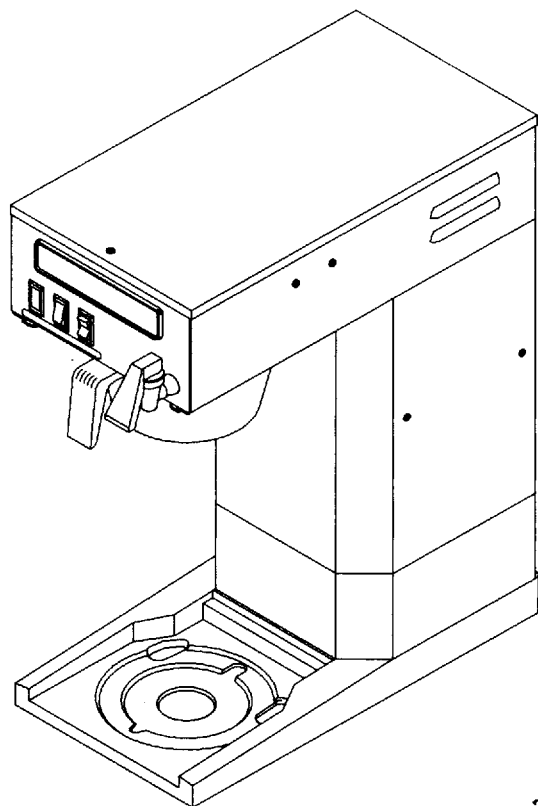


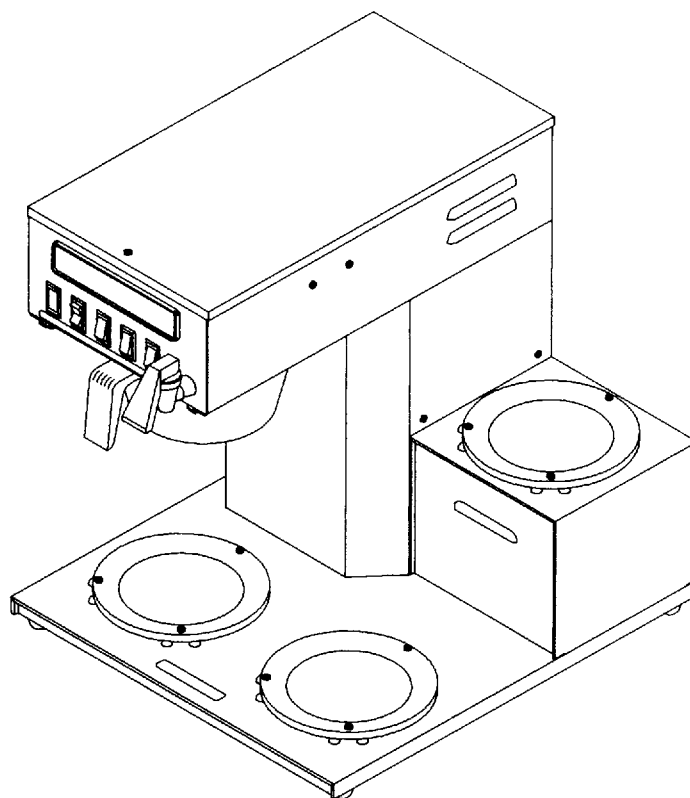
NEWCO *FC SERIES*

F C S E R I E S B R E W E R M O D E L S
R E P L A C E M E N T P A R T S C A T A L O G U E



- FC-AP
- FC-TD
- FC-LD
- FC-3
- FC-S3
- FC-S

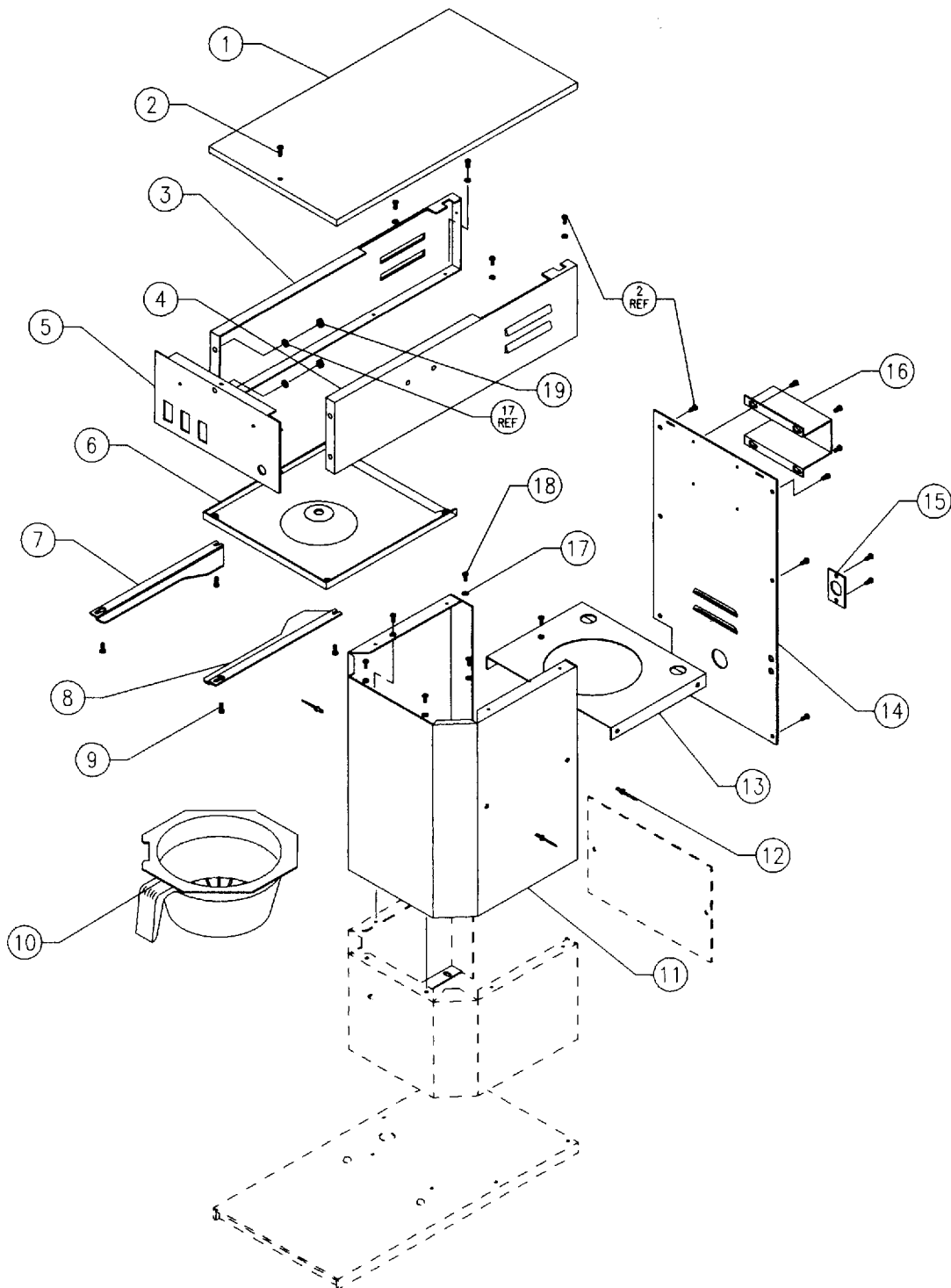
SEE REAR PANEL FOR
MODEL ILLUSTRATIONS



 **NEWCO ENTERPRISES INC.**

1735 S. River Rd • St. Charles, MO 63303 • 1.800.325.7867 • FAX 314.925.0029

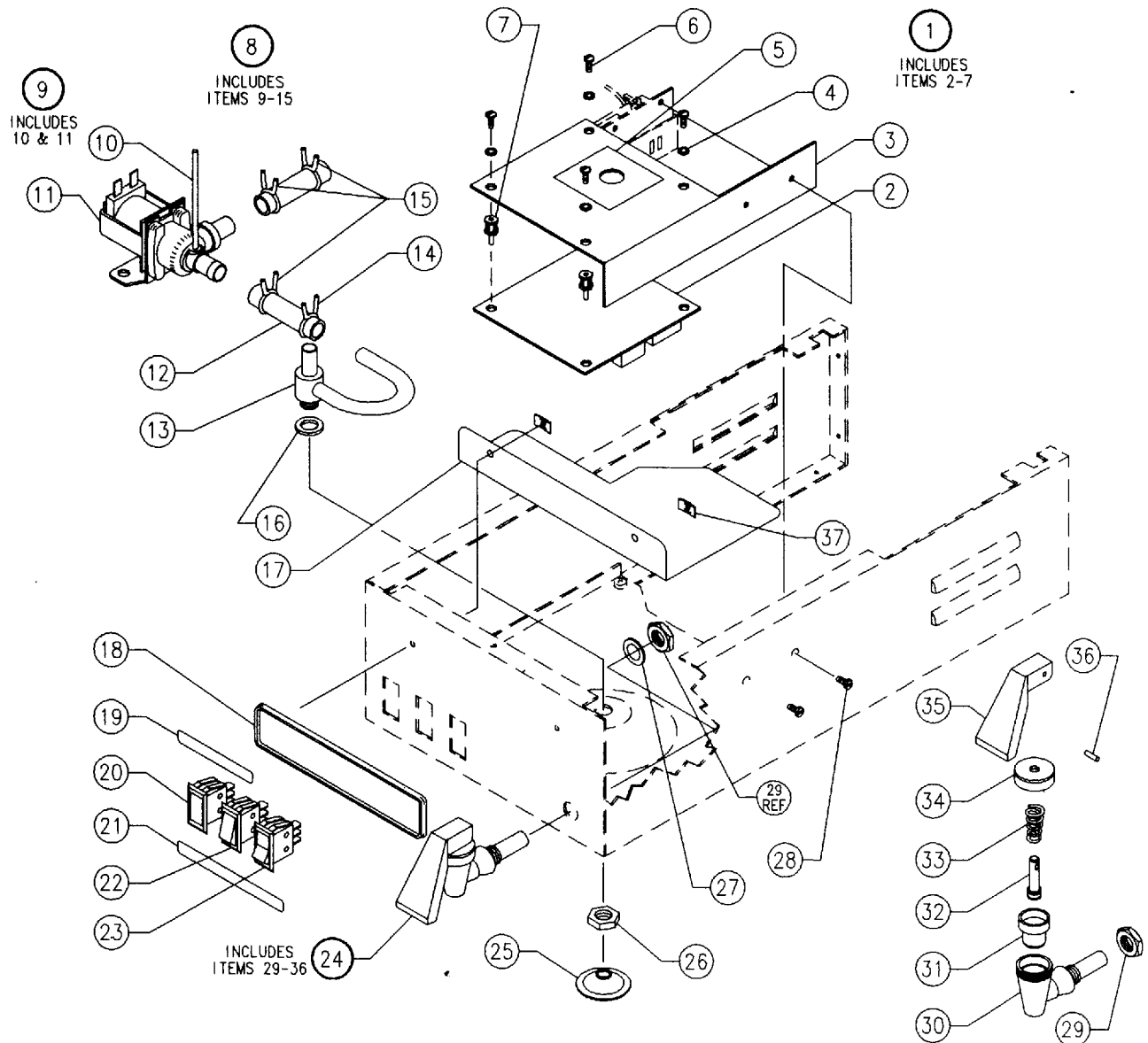
BODY ASSEMBLY



Item	Part No	Description
1	102789	Cover, Plain
1	102791-B	Cover Assy, 2 Sta Warmer
2	102333	Screw, 6-32 X 3/8"
3	101812	Wrapper, Upper, LH
4	101828	Wrapper, Upper, RH
5	101831-B	Face Plate, Black, AP, TD, LD, S
5	101837-B	Face Plate, Black, 3 Sta Warmer Models
6	101777	Brew Plate
7	102800	Brew Rail, LH
8	102799	Brew Rail, RH
9	100065	Screw, 6-32 X 5/16

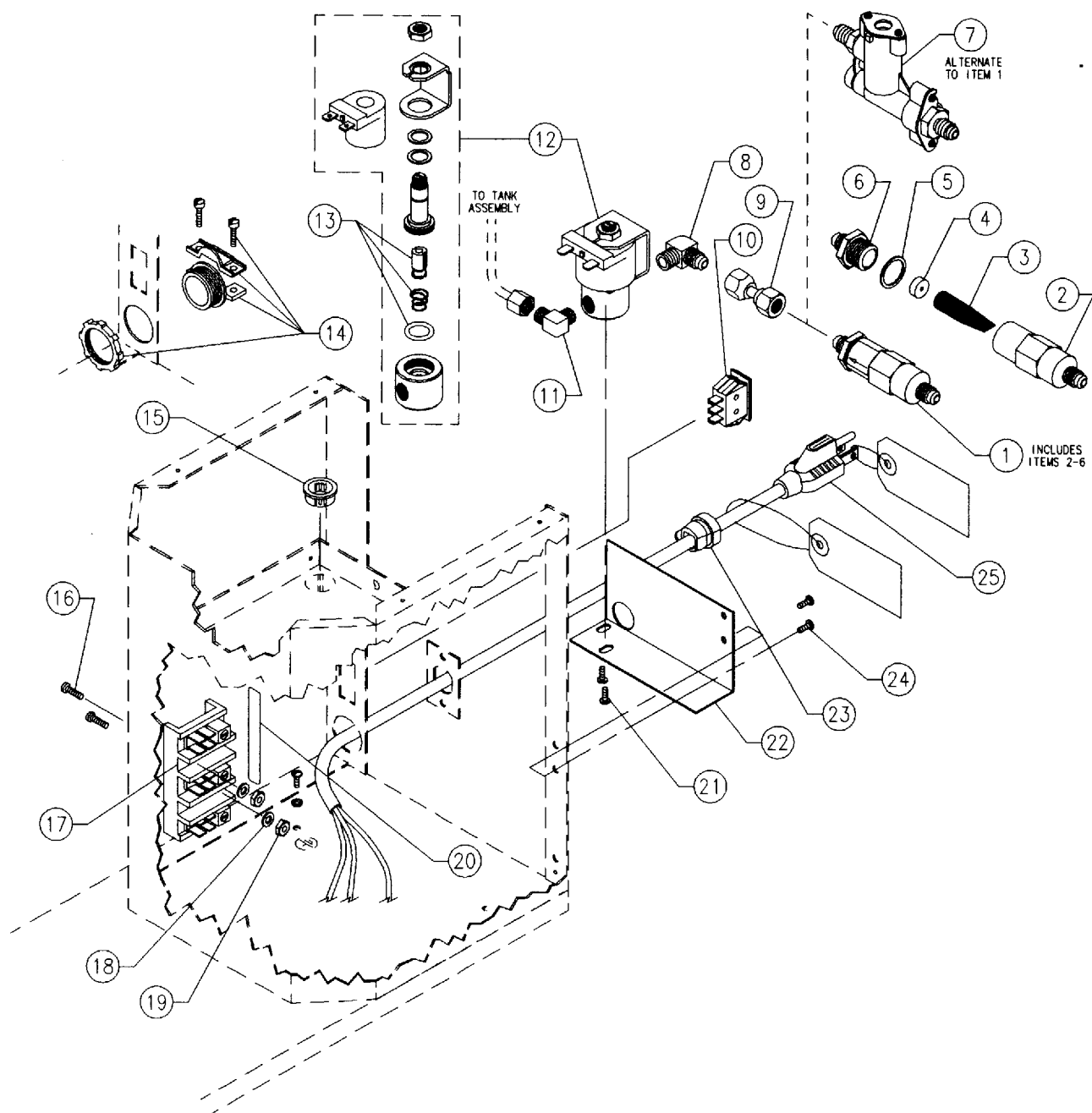
Item	Part No	Description
10	781513	Brew Basket, Black, Round Flange
10	700118	Brew Basket, Black, Wide Base 8 Sided
11	101868	Column, All Models
12	100192	Rivit
13	101860	Shelf, Tank
14	101990	Panel, Main Rear, All Models
15	101898	Plate, Cord
16	101989	Bracket, Filter
17	100054	Washer, #8 Lock
18	511027	Screw, 8-32 X 3/8"
19	100061	Nut, 8-32 Hex

CONTROL BOARD, SWITCHES, FAUCET AND DUMP VALVE ASSEMBLY



Item	Part No	Description	Item	Part No	Description
1	101867	Control Board Assembly - Includes Items 2-7	20	701449	Light, 120 V, Red Rectangular "Heating"
2	101394	Control Board	21	110927	Label, "Heating Brew Start Lower Front Rear"
3	101866	Bracket, Control Board	21	110928	Label, "Ready Brew Start Lower Front Rear"
4	100212	Washer, #6	21	101887	Label, "Ready Power Brew Start"
5	101889	Label, Control Board	21	110829	Label, "Heating Power Brew Start"
6	102333	Screw, 6-32 X 3/8"	22	100085	Switch, Lighted SPST, Red Rocker
7	110581	Support, Screw Mounted Type	23	201985	Switch, SPST, Momentary, Brew Start (Black)
8	108420	Valve Assembly, W/Vent. Includes Items 9-15	24	110885	Faucet Assembly. Includes Items 29-36
9	105095	Valve, With Vent. Includes Items 10 & 11	25	100024	Sprayhead, 5 Hole S/S
10	105082	Tube, S/S .134 OD x 2.875	26	201173	Nut, 7/16-20 Sprayhead
11	105092	Valve, With Vent Hole	27	101011	Washer, 1/2" Lock
12	701982	Tube, 3/8" ID X 5/8" OD X 2" Silicone	28	511027	Screw, 8-32 X 3/8
13	101835	Tube Assembly, Sprayhead	29	N/A	Nut, Faucet
14	102666	Clamp, S/S #9	30	N/A	Faucet Body
15	152461	Clamp, S/S #10	31	102675	Seat Cup
16	100025	Gasket, Sprayhead	32	203851	Stem
17	101959	Barrier, Insulating	33	100612	Spring
18	100058	Nameplate, Newco	34	N/A	Cap
18	101384	Nameplate, First Choice	35	100639	Pin
19	101883	Label, "Warmer Controls"	36	102786	Handle, Red
20	702062	Light, 120 V, Green Rectangular "Ready"	37	100184	Clip, #6 Tinnerman, Flat Type

ELECTRICAL AND PLUMBING CONNECTION COMPONENTS



Item	Part No	Description
1	101350	Flow Assembly, 1/4 Flare X 1/4 Flare
2	202052	Body, 1/4 Flare
3	100299	Screen
4	100298	Washer, .35 gpm Flow Control
5	790019	Gasket, Nylon
6	100294	Cap, 1/4 Flare
7	110305	Flow Assembly, PDS - See PDS Parts Guide
For Replacement Parts Data		
8	100177	Elbow, Male 1/8 NPT X 1/4 Flare
9	100161	Tube, 1/4 Flare Assembly
10	100500	Switch, SPST, ON/OFF (Tank)
11	100149	Elbow, Male 1/4 Comp X 1/8 NPT
12	100255	Valve, Solenoid

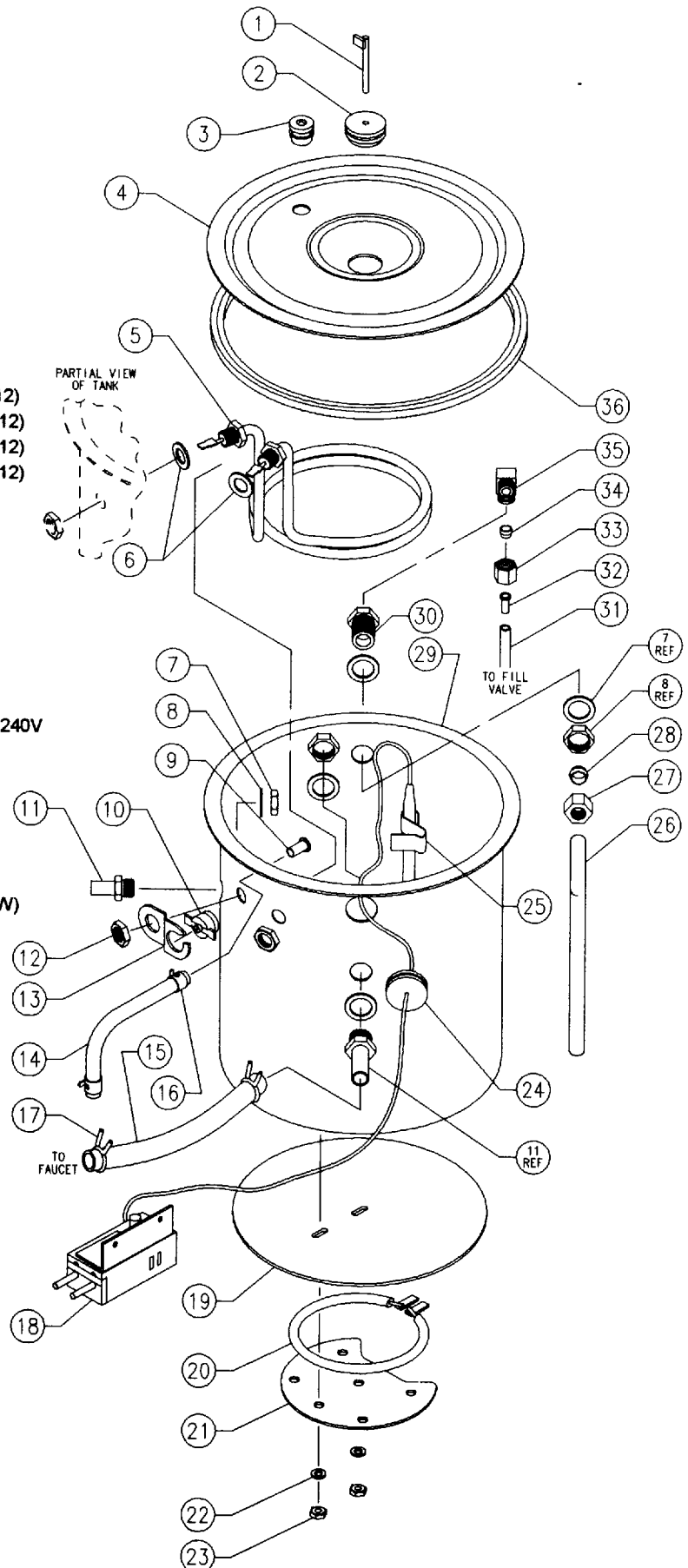
Item	Part No	Description
13	101527	Kit, Valve Repair
14	511054	Connector, Cable, Strain Relief 240V
15	100003	Bushing, 3/4" Snap
16	704224	Screw, 6-32 X 7/8"
17	511053	Terminal Block
18	100212	Washer, #6
19	100191	Nut, #6
20	202863	Label, "L1 N L2"
21	100613	Screw, 10-32 X 1/4"
22	101993	Bracket, Solenoid
23	101035	Grommet, Strain Relief, 15A Cord
24	511027	Screw, 8-32 X 3/8
25	100022	Cord, 15A Power, 120V Brewers

TANK AND TANK LID ASSEMBLIES

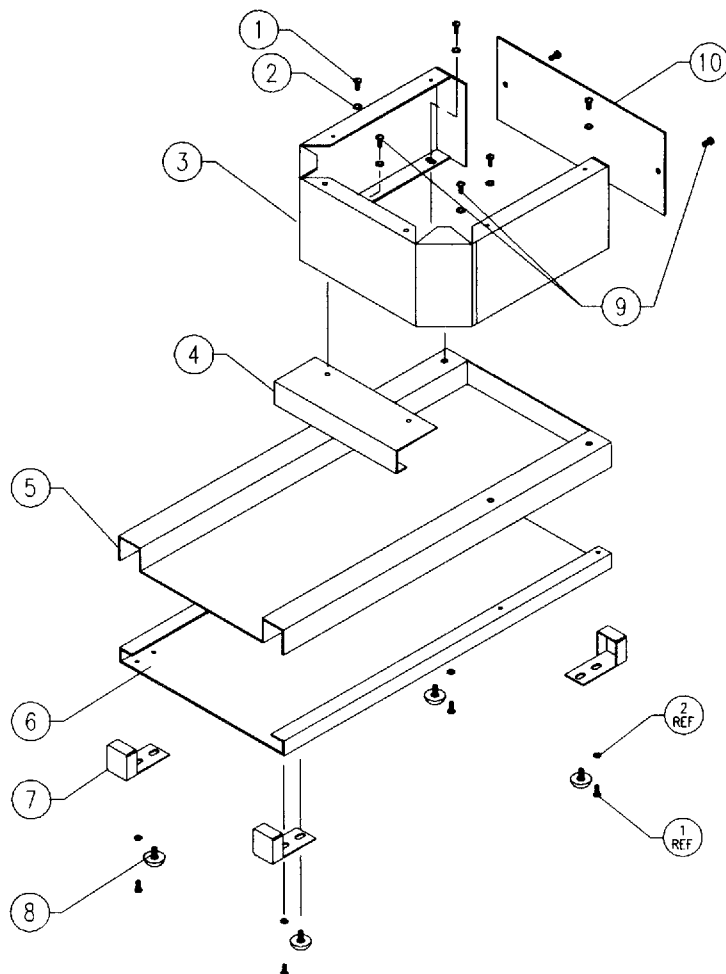
Part No	Description
101995	Tank Assembly, 1400W 120V
110370	Tank Assembly, 1100W 120V
110262	Tank Assembly, 3500W 240V
101988	Lid Assembly, Tank. Incl 1, 2, 3, & 4

The above tank assemblies include all item numbers shown except for items 1-4 and 31-34

Item	Part No	Description
1	102801	Probe, Water Level
2	102836	Grommet, Silicone
3	152207	Plug, Silicone Tank
4	781507	Lid, Punched Tank
5	102581	Element, 1100W 120V Tank (Incl 5, 6 & 12)
5	102580	Element, 1400W 120V Tank (Incl 5, 6, & 12)
5	100071	Element, 1750W 120V Tank (Incl 5, 6, & 12)
5	102850	Element, 3500W 240V Tank (Incl 5, 6, & 12)
6	100409	Gasket, .515 ID
7	100431	Nut, 9/16-24, 11/16 Brass Hex
8	100030	Gasket, .562 ID
9	201112	Insert, 1/4" Tubing
10	100633	Thermostat, Manual Reset Hi-Limit
10	100174	Thermostat, Auto Reset Hi-Limit, 240 V
11	102835	Fitting, Bulkhead Outlet
12	100190	Nut, 1/2-20 Brass Jam
13	100269	Bracket, Manual Reset Hi-Limit T-stat
13	100143	Bracket, Automatic Reset Hi-Limit T-stat, 240V
14	101135	Tube, 1/4" ID X 3/8" OD X 6.5" Silicone
15	102874	Tube, 3/8" ID X 5/8" OD X 9" Silicone
16	100440	Clamp, 3/8" Tube
17	152461	Clamp, S/S #10
18	704227	Thermostat, Regulating
19	700387	Plate, Spreader
20	100642	Element, Warmer 220V 100W (110V 25 W)
21	100086	Plate, Element Support
22	100054	Washer, #8 Lock
23	100061	Nut, 8-32 Hex
24	100175	Grommet, Silicone, With Slit
25	100209	Clip, Capillary Bulb
26	152701	Tube, 3/8" OD, S/S Fill
27	100170	Nut, 3/8" Compression
28	100166	Sleeve, 3/8" Brass Compression
29	101863	Tank, Spotwelded
30	101720	Connector, Fem 3/8" Comp X 1/8 NPT
31	100445	Tube, 3/16" ID X 1/4" OD X 12.25" Teflon
32	202044	Insert, 3/16" Tubing, Brass
33	102328	Nut, 1/4 Compression, Reamed 7.2mm
34	202047	Sleeve, 1/4" Plastic Tubing
35	100149	Elbow, Male 1/4 Comp X 1/8 NPT
36	781181	Gasket, 23" Silicone Tank

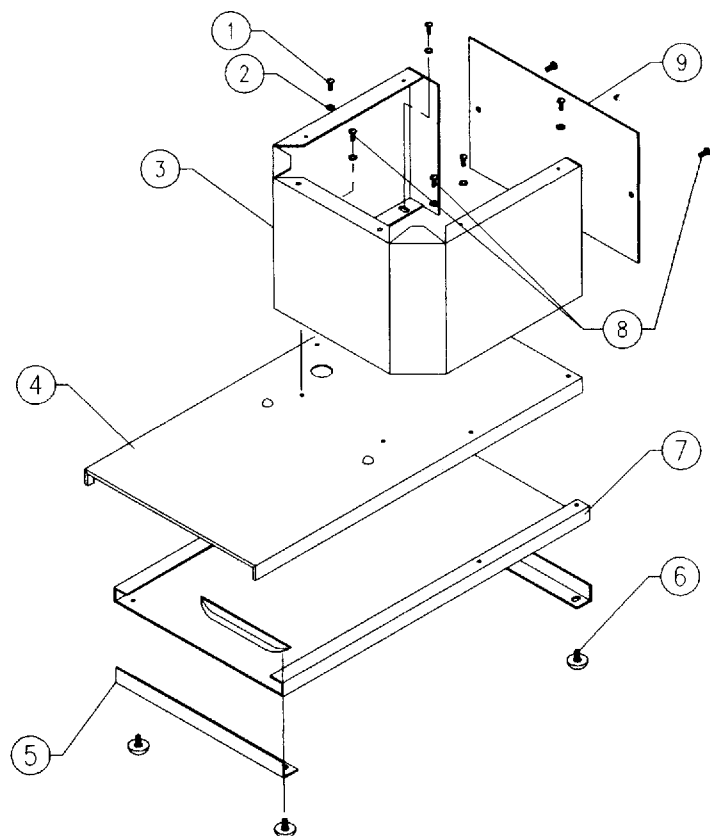


DISPENSER AND AIRPOT MODEL BASE ASSEMBLIES



LD and TC BASE ASSEMBLY

Item	Part No	Description
1	511027	Screw, 8-32 X 3/8
2	100054	Washer, #8
3	101984	Riser 2-13/16" (Special)
3	110022	Riser 3-9/16", LD
3	110149	Riser 4-5/16" (Special, Ralph's)
4	101736	Bracket, LD Stop (Not Included in base assy)
4	101846	Bracket, S Stop (Not Included in base assy)
5	101853	Base Top, LD
5	101814	Base Top, LD 240V
5	101854	Base Top, S
6	101739	Base Bottom, LD
6	101847	Base Bottom, S
7	101740	Cap, S/S, LD End
7	101845	Cap, S/S, S End
8	100078	Foot, Bumper
9	102333	Screw, 6-32 X 3/8"
10	101999	Back, Riser 2-13/16" (Special)
10	110023	Back, Riser 3-9/16", LD
10	110148	Back, Riser 4-5/16" (Special, Ralph's)

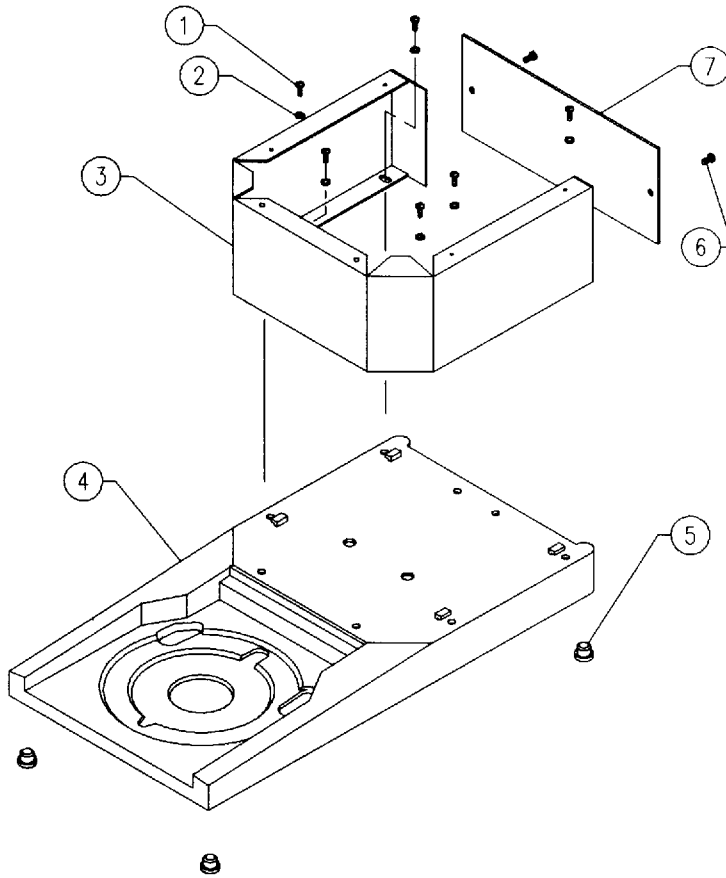


AIRPOT and DISPENSER BASE ASSEMBLIES

Item	Part No	Description
1	511027	Screw, 8-32 X 3/8
2	100054	Washer, #8
3	110994	Riser 5-11/16", AP
3	101876	Riser 9-3/4", TD
4	102763	Base Top, Dispenser
4	102761	Base Top, Dispenser 240V
4	102931	Base Top, Airpot
4	102893	Base Top, Airpot 240V
5	102825*	Plate, S Base Trim
6	100078	Foot, Bumper
7	102764	Base Bottom, Dispenser
7	102794	Base Bottom, Airpot
8	102333	Screw, 6-32 X 3/8"
9	110993	Back, Riser 5-11/16", AP
9	101870	Back, Riser 9-3/4", TD

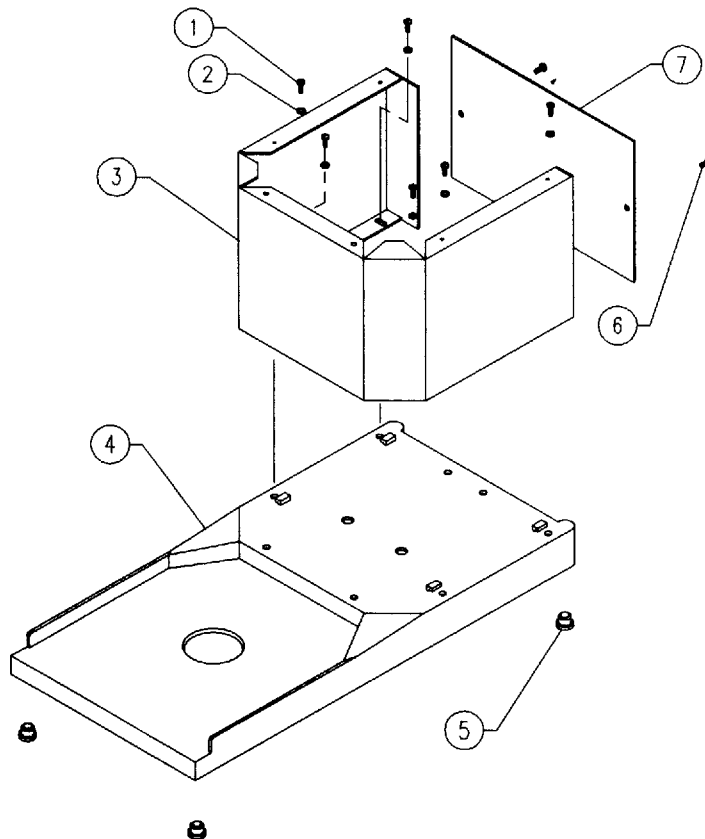
* Part number shown is for the Stainless Steel version.
When ordering add -B to part number for black parts where available.

ALTERNATE ABS THERMAL BASE ASSEMBLIES



LD and TC BASE ASSEMBLY

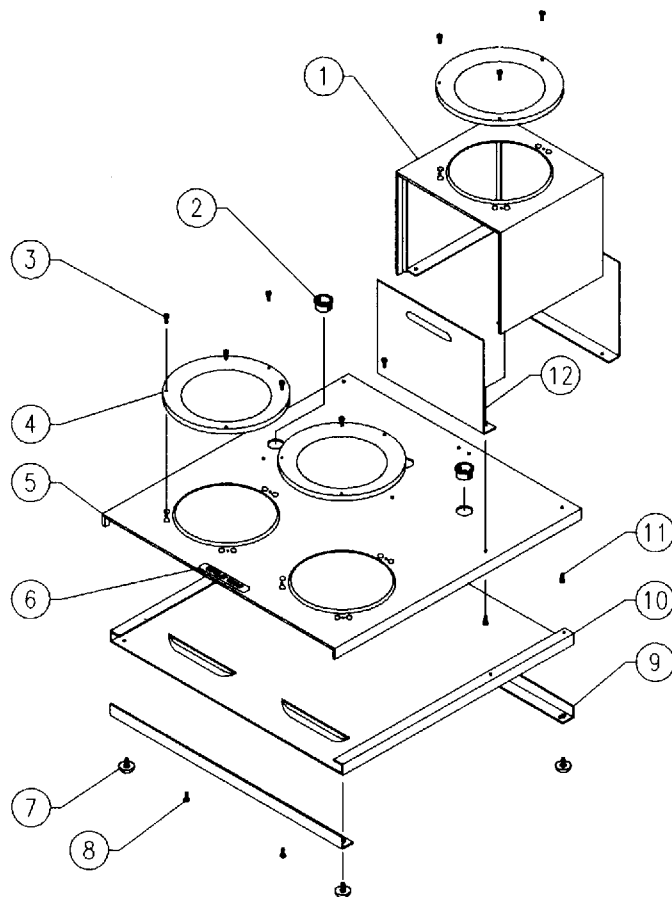
Item	Part No	Description
1		Screw, #8, Thread Forming
2	100054	Washer, #8
3	101984	Riser 2-13/16" (Special)
3	110022	Riser 3-9/16", LD
3	110149	Riser 4-5/16" (Special, Ralph's)
4		Base, LD/TC, ABS
5	100665	Toe, Rubber
6	102333	Screw, 6-32 X 3/8"
7	101999	Back, Riser 2-13/16" (Special)
7	110023	Back, Riser 3-9/16", LD
7	110148	Back, Riser 4-5/16" (Special, Ralph's)



AIRPOT and DISPENSER BASE ASSEMBLIES

Item	Part No	Description
1		Screw, #8, Thread Forming
2	100054	Washer, #8
3	110994	Riser 5-11/16", AP
3	101876	Riser 9-3/4", TD
4		Base, Dispenser/Airpot
5	100665	Toe, Rubber
6	102333	Screw, 6-32 X 3/8"
7	110993	Back, Riser 5-11/16", AP
7	101870	Back, Riser 9-3/4", TD

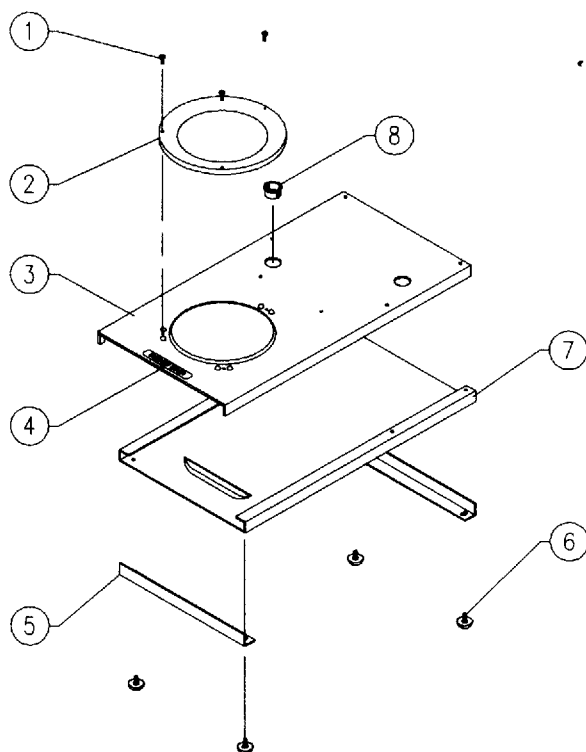
WARMER MODEL BASE ASSEMBLIES



LOW PROFILE BASE ASSEMBLY

Item	Part No	Description
1	101896	Step Up, Warmer
2	100003	Bushing, 3/4" Snap
3	100160	Screw, 4-40 X 5/8"
4	100010	Warming Plate Assembly, Black 120V 100W
5	102811	Base Top, LP
6	100254	Decal, "CAUTION:HOT SURFACES"
7	100078	Foot, Bumper
8	511027	Screw, 8-32 X 3/8
9	102826*	Plate, LP Base Trim
10	102814	Base Bottom, LP
11	102333	Screw, 6-32 X 3/8"
12	101897	Plate, Warmer Step Up Louvred Trim

* Part number shown is for the Stainless Steel version.
When ordering add -B to part number for black parts where available.

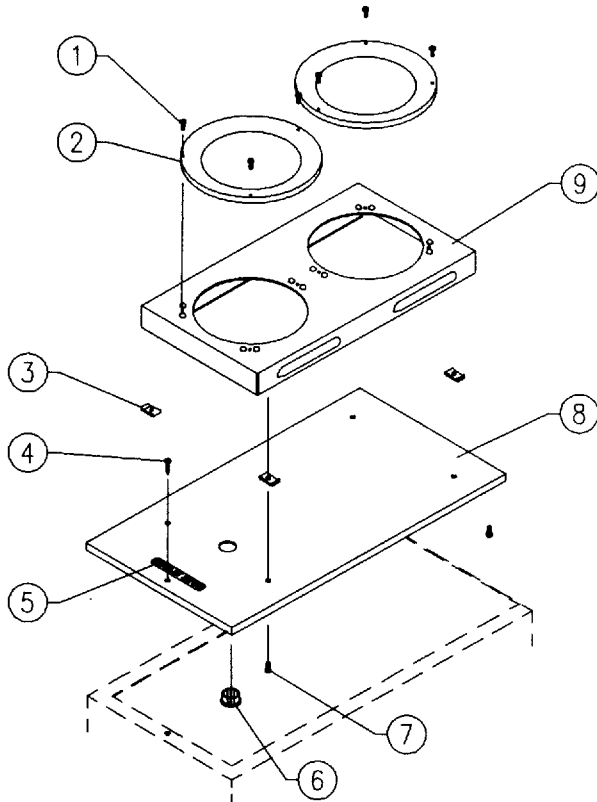


IN LINE BASE ASSEMBLY

Item	Part No	Description
1	100160	Screw, 4-40 X 5/8"
2	100010	Warming Plate Assembly, Black 120V 100W
3	102792	Base Top, S
4	100254	Decal, "CAUTION:HOT SURFACES"
5	102825*	Plate, S Base Trim
6	100078	Foot, Bumper
7	102794	Base Bottom, S
8	100003	Bushing, 3/4" Snap

* Part number shown is for the Stainless Steel version.
When ordering add -B to part number for black parts where available.

COVER ASSEMBLY



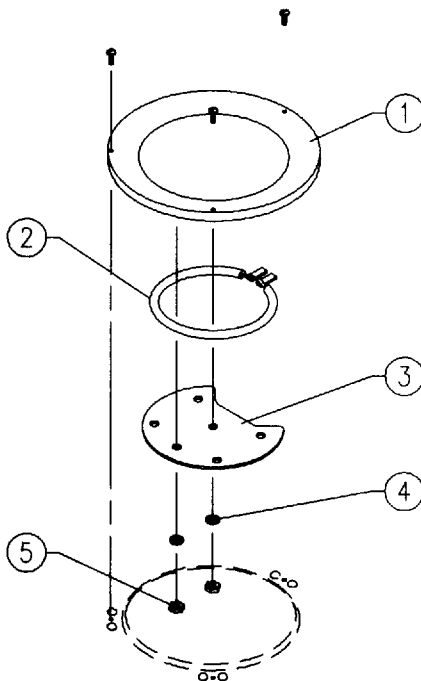
S3 MODEL COVER ASSEMBLY

Item	Part No	Description
1	100160	Screw, 4-40 X 5/8"
2	100010	Warming Plate Assembly, Black 120V 100W
3	100197	Clip, #8 Tinnerman
4	102333	Screw, 6-32 X 3/8"
5	100254	Decal, "CAUTION: HOT SURFACES"
6	100003	Bushing, 3/4" Snap
7	511027	Screw, 8-32 X 3/8"
8	102790	Cover, 2 Station Blank
9	705370	Stove, 2 Station

AP, LD, 3, S, TD COVER

Item	Part No	Description
7	102789	Cover, Plain

WARMER ASSEMBLY



WARMER PLATE ASSEMBLY

Item	Part No	Description
1	100008	Warming Plate, Black
2	100187	Element, Warmer 120V 100W
3	100086	Plate, Element Support
4	100054	Washer, #8 Lock
5	100061	Nut, 8-32 Hex

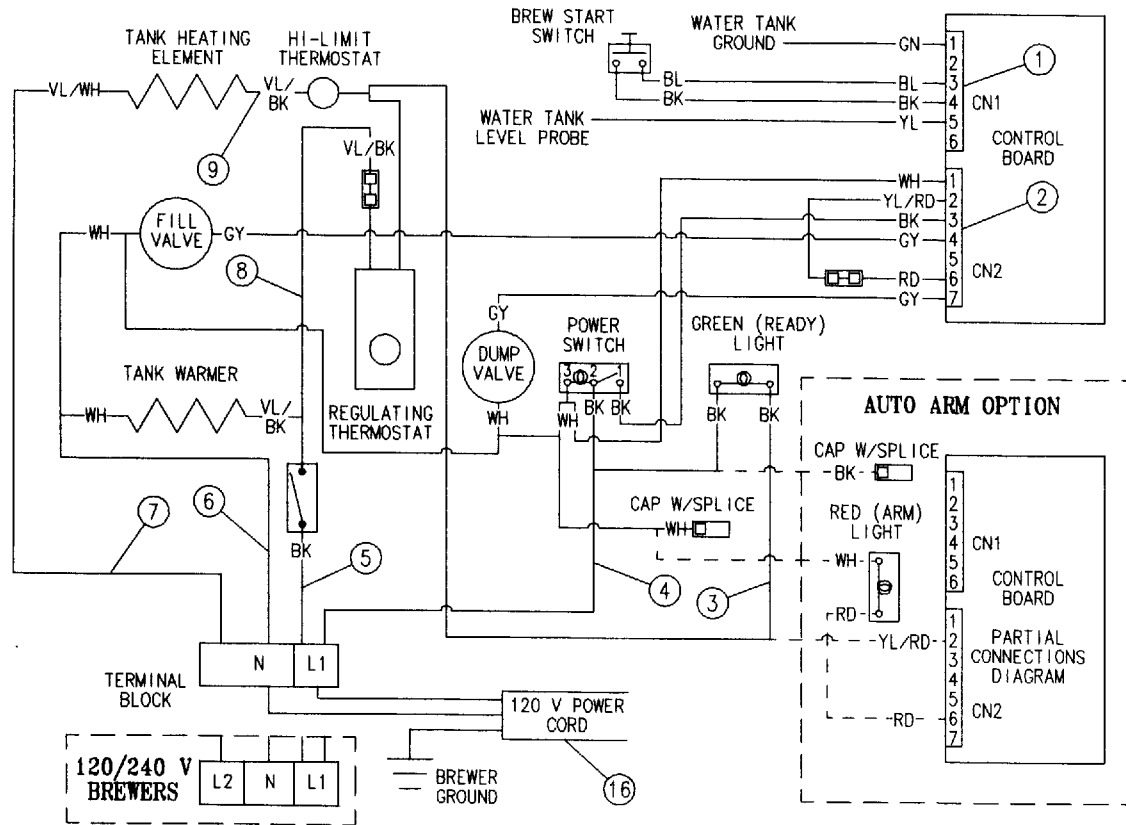
WIRING HARNESSES and WIRE ASSEMBLIES

Item Numbers in Table Below Correlate to Leader Numbers in Wiring Diagrams on Page 11

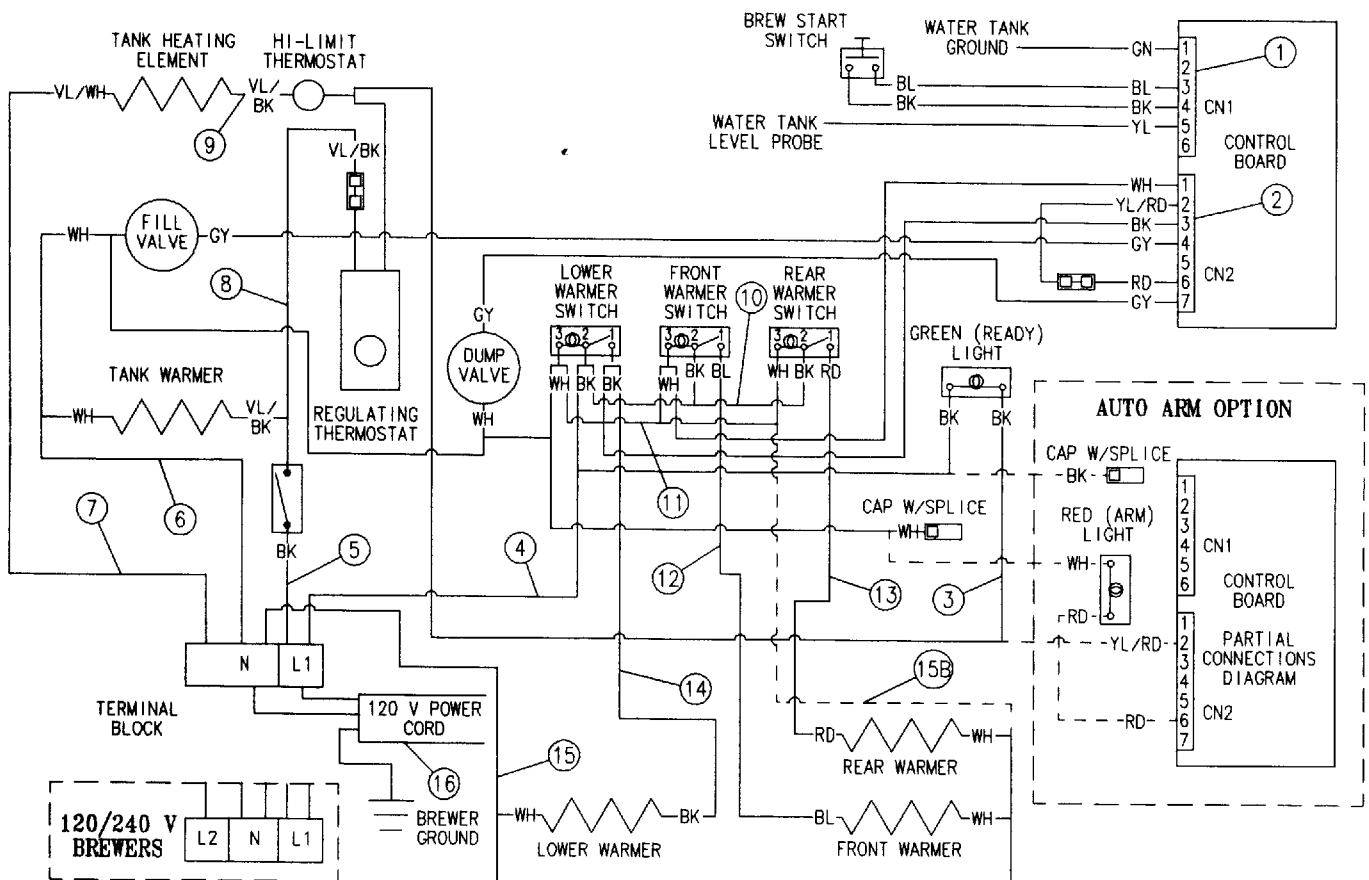
Item	Part No	Description	-LD, S, AP, TD	-3	-S3	120 V	120/ 240 V	Auto Arm	Ready
1	101807	Harness, CN1, 6 Pole Control Board	X	X	X	X	X	X	X
2	101806	Harness, CN2, 7 Pole Control Board	X	X	X	X	X	X	X
3*	110004*	Lead, 18 Ga, Black, 11", 1S-1	X	X	X	X	X		X
4	110000	Harness, Switch, Ready Light	X	X	X	X	X	X	X
5	103049	Lead, 14 Ga, Violet/Black, 5", 1S-1	X	X	X	X	X	X	X
6	110692	Harness, White, FC Neutral	X	X	X	X	X	X	X
7	110691	Lead, 14 Ga, Violet/White, 16.5", 1S-1	X	X	X	X		X	X
7	311168	Lead, 14 Ga, Violet/Red, 17", 1S-1	X	X	X		X	X	X
8	101804	Harness, Bk, Tank Warmer, Thermostat	X	X	X	X	X	X	X
9	700130	Lead, 14 Ga, Violet/Black, 5", 1S-1S	X	X	X	X	X	X	X
10	110001	Harness, Black, Jumper		X	X	X	X	X	X
11	110002	Harness, White, Jumper		X	X	X	X	X	X
12	101822	Lead, 18 Ga, Blue, 36", 1-2, FC-3		X		X	X	X	X
12	705428	Lead, 18 Ga, Blue, 18", 1-1, FC-S			X	X	X	X	X
13	102837	Lead, 18 Ga, Red, 47", 1-2, FC-3		X		X	X	X	X
13	705548	Lead, 18 Ga, Red, 21", 1-1, FC-S			X	X	X	X	X
14	110003	Lead, 18 Ga, Black, 28", 1-2, FC-3/FC-S		X	X	X	X	X	X
15	101983	Harness, Wh, Warmers, 3 Sta Base, FC-3		X		X	X	X	X
15	705418	Lead, 18 Ga, Wh, 14", 1-2, 1 Sta Base, FC-S			X	X	X	X	X
15B	102834	Harness, Wh, Warmers, 2 Sta Cover, FC-S			X	X	X	X	X
16	100022	Cord, Power, 14/3, 120 V, 15 A	X	X	X	X		X	X

* Requires resistor ass'y (102349) on light for 240 V models

WIRING DIAGRAM - THERMAL MODELS

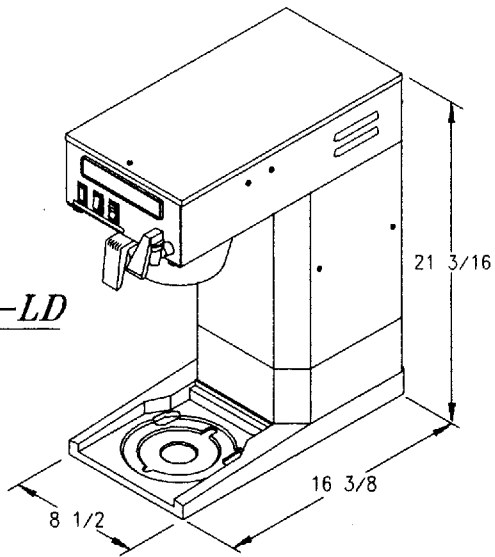


WIRING DIAGRAM - WARMER MODELS

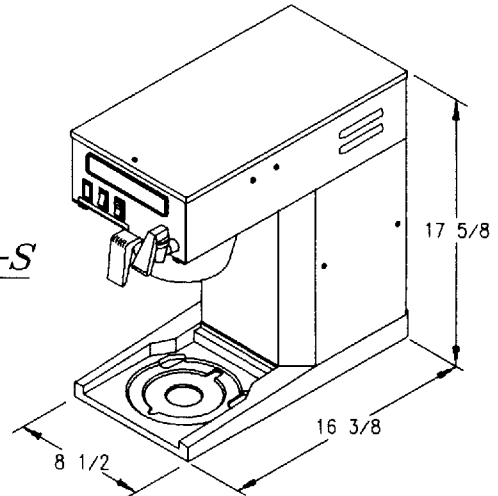


MODEL ILLUSTRATIONS

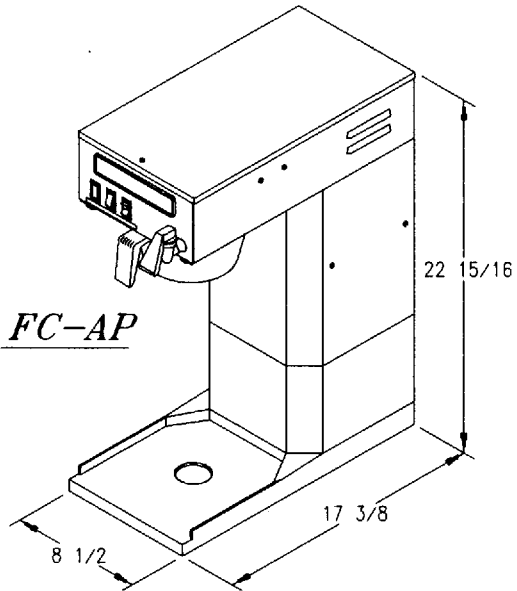
FC-LD



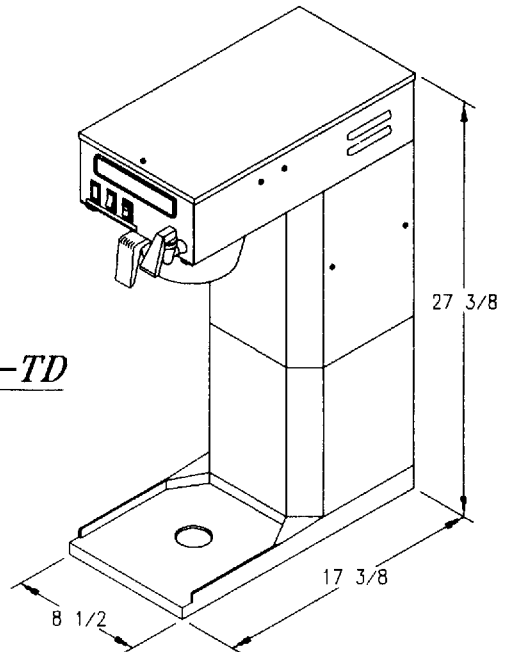
FC-S



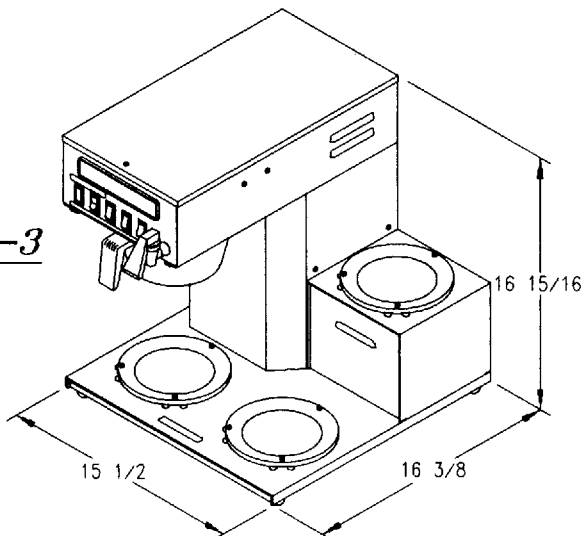
FC-AP



FC-TD



FC-3



FC-S3

