

SERVICE SECTION

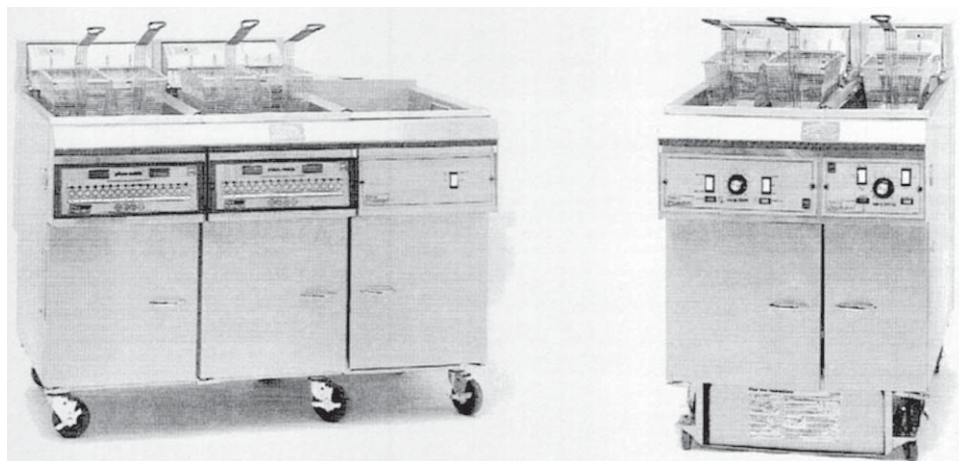


There's Always Something Cooking!

Service, Parts, and Schematics
For Electric Fryers With Options

Including Options, Built-In and UFM (Spacefighter)
Filter Systems

Covering Models
E7, E7B, E12, E14, E14B, E14X, E18, & E18B



Pitco Frialator, Inc., P.O. Box 501, Concord, NH 03302-0501 • 509 Route 3A, Bow, NH 03304
(603) 225-6684 • FAX (603) 225-8497

L20-055 R12 (06/11)

TO THE PURCHASER, OWNER AND STORE MANAGER



Please review these warnings prior to posting them in a prominent location for reference.

WARNING

DO NOT store or use gasoline or other flammable vapors and liquids in the vicinity of this or any other appliance.

WARNING

Improper installation, alteration, service or maintenance can cause property damage, injury or death. Read the installation, operating and maintenance instructions thoroughly before installing or servicing this appliance.

WARNING

Installation, maintenance and repairs should be performed by a Pitco Authorized Service and Parts (ASAP) company technician or other qualified personnel. Installation, maintenance or repairs by unauthorized and unqualified personnel will void the warranty.

WARNING

Installation and all connections must be made according to national and local regulations and codes in force.

WARNING

A country approved all pole circuit breaker with a minimum open contact gap of 3mm must be used for proper installation. (CE countries)

WARNING

During the warranty period if a customer elects to use a non-original part or modifies an original part purchased from Pitco and/or its Authorized Service and Parts (ASAP) companies, this warranty will be void. In addition, Pitco and its affiliates will not be liable for any claims, damages or expenses incurred by the customer which arises directly or indirectly, in whole or in part, due to the installation of any modified part and/or received from an unauthorized service center.

WARNING

This appliance, when installed, must be electrically grounded in accordance with local codes, or in the absence of local codes, with the National Electrical Code, ANSI/NFPA 70, or the Canadian Electrical Code, CSA C22.2, as applicable.

WARNING

DO NOT alter or remove structural material on the appliance to facilitate storage or for any other reason.

WARNING

This appliance is intended for professional use only and should be operated by fully trained and qualified personnel.

WARNING

DO NOT use the electrical cord as a leash to move the appliance. Series injury and appliance damage can occur.

WARNING

If the supplied power cord or receptacle is damaged, it must be replaced by a Pitco Authorized Service and Parts (ASAP) company technician, or a similarly qualified person in order to avoid a hazard.

WARNING

The power supply must be disconnected before servicing, maintaining or cleaning this appliance.

WARNING

The appliance is NOT jet stream approved. DO NOT clean the appliance with a water jet.

WARNING

DO NOT attempt to move this appliance or transfer hot liquids from one container to another when the unit is at operating temperature or filled with hot liquids. Serious personal injury could result if skin comes in contact with the hot surfaces or liquids.

WARNING

DO NOT sit or stand on this appliance. The appliance's top panel, filter pan, filter carriage, pan cover is not a step. Serious injury could result from slipping, falling or contact with hot liquids.

WARNING

NEVER use the appliance as a step for cleaning or accessing the ventilation hood. Serious injury could result from slips, trips or from contacting hot liquids.

WARNING

The filter pan should be dry and free of water droplets prior to use. Serious injury could result from hot steam vapors when hot oil/shortening mixes with water.

WARNING

DO NOT overfill filter pan with hot oil/shortening. Do not leave appliance unattended while draining or refilling with oil/shortening. Over filling the appliance can cause serious injuries and damage the appliance.

WARNING

The contents of the crumb catch and/or filter pan of any filter system must be emptied into a fireproof container at the end of each day. Some food particles can spontaneously combust if left soaking in certain types of oil or shortening.

WARNING

Completely shut the appliance down when the oil/shortening is being drained from the appliance. This will prevent the appliance from heating up during the draining and filling process. Serious injury and appliance damage can occur.

WARNING

This appliance is intended for indoor use only.

WARNING

DO NOT operate appliance unless all panels and access covers are attached correctly.

WARNING

It is recommended that this appliance be inspected by a qualified service technician for proper performance and operation on a yearly basis

WARNING

This appliance is designed to operate on a specific voltage. This information can be found on the data plate located on the rear of the appliance

Table of Contents (Service)

Section	Title	Page
	Table of Contents (Service)	i-ii
	List of Figures	ii
Chapter 4: Service		4-1
4.1	REPLACEMENT PROCEDURES	4-1
4.1.1	Heating Element Removal and Replacement	4-1
4.1.2	Backup Thermostat Replacement - Computer Models Only	4-2
4.1.3	Calibrating the Thermostat - Computer Models Only	4-3
4.2	TESTING CONTACTORS (RELAYS)	4-3
4.3	TESTING HEATING ELEMENTS	4-4
4.4	TESTING THE TEMPERATURE SETTING POTENTIOMETERS	4-4
4.5	TESTING THE TEMPERATURE CONTROL MODULES	4-4
4.6	TESTING THE TEMPERATURE PROBE	4-5
4.7	TESTING THE HEATING ELEMENT INTERLOCK	4-5
4.8	TROUBLESHOOTING FRYERS WITHOUT COMPUTERS	4-7
4.9	TROUBLESHOOTING FRYERS WITH COMPUTERS	4-14
4.10	TROUBLESHOOTING BASKET LIFT PROBLEMS	4-16
4.11	TROUBLESHOOTING BUILT-IN FILTER UNITS	4-18
4.12	TROUBLESHOOTING UFM FILTER UNITS	4-21
Chapter 5: Parts		5-1
Fig. No.		
5-1	Outside View	5-2
5-2	Entrance Box	5-3
5-3	Inside Fryer Tank Components	5-4
5-4	Frame-Cabinet / Electrical Assemblies With Components	5-7
5-5	UFM Filter, Frame/Electrical Assembly	5-9
5-6	UFM Pilter, Pick-Up/Pan Assembly	5-11
5-7	UFM Filter, Motor / Return Assembly	5-13
5-8	Built-In Filter Pan With Components	5-15
5-9	Filter Piping With Components	5-17
5-10	Built-In Filter With Accessories	5-19
	ALPHABETICAL PART LIST	5-20
	NUMERICAL PART LIST	5-24

Table of Contents (Service) Cont.

Section	Title	Page
Chapter 6:	Schematics	6-1

List of Tables and Figures

Table No.	Title	Page
5-1	Frame-Cabinet / Electrical Assemblies With Components	5-6
5-2	UFM Filter, Frame/Electrical Assembly	5-8
5-3	UFM Pilter, Pick-Up/Pan Assembly	5-10
5-4	UFM Filter, Motor / Return Assembly	5-12
5-5	Built-In Filter Pan With Components	5-14
5-6	Built-In Filter Piping With Components	5-16
5-7	Built-In Filter With Accessories	5-18

Figure No.	Title	Page
5-1	Outside View	5-2
5-2	Entrance Box	5-3
5-3	Inside Fryer Tank Components	5-4
5-4	Frame-Cabinet / Electrical Assemblies With Components	5-7
5-5	UFM Filter, Frame/Electrical Assembly	5-9
5-6	UFM Pilter, Pick-Up/Pan Assembly	5-11
5-7	UFM Filter, Motor / Return Assembly	5-13
5-8	Built-In Filter Pan With Components	5-15
5-9	Filter Piping With Components	5-17
5-10	Built-In Filter With Accessories	5-19

Chapter 4: Service

This chapter provides the qualified technician with the replacement and troubleshooting procedures necessary to service the Pitco fryer.

4.1 REPLACEMENT PROCEDURES

These procedures are provided to the qualified technician as a guide to removal and replacement of various fryer components. If a test is required to verify component operation after installation, it will be referenced.

WARNING

To prevent burns, always ensure the fryer is completely SHUT DOWN and COOLED down before working on the fryer. Do not break any fryer gas connections while the unit is connected to a gas supply line.

WARNING

The power supply must be disconnected before servicing or cleaning the appliance.

4.1.1 Heating Element Removal and Replacement

Replacing a heating element is a complex and time consuming procedure. Ensure that you have tested the heating elements to determine that the element is bad and not something else.

- a. Move the fryer out to gain access to the rear panels. Remove the upper small access cover and the large lower access cover.
- b. The terminal block for the heating elements is located behind the lower access plate. Tag the connections with wire markers for easy reinstallation, and remove the wires. The temperature probe wires are not connected through the terminal board. To disconnect the temperature probe, remove the small access plate on top of the pivot box (plate opposite High Limit switch). The connector for the probe is inside the pivot box. Disconnect the probe at this connector and gently pull the wire out of the pivot box.
- c. Disconnect the spring assembly from the pivot box by raising the elements and holding them in place with a board across the tank. Do not use the element bracket to hold the elements up.
- d. Next remove the pivot box assembly by removing the screws that attach the pivot box hinges to the fryer. The heating elements will need to be raised to gain access to the screw heads. Support the heating element assembly before removing the screws. Removing the hinge screws frees the heating element assembly from the fryer.

- e. Once free of the fryer, set the element assembly aside. Remove the access plate on the back of the pivot box to gain access to the heating element connectors. Disconnect the wire for the defective element.
- f. Loosen the nuts that attach the heating element to the pivot box. Slide the heating element out of the pivot box.
- g. Install the new heating element by reversing this procedure.

4.1.2 Backup Thermostat Replacement - Computer Models Only

Only fryers that have computer controls have this backup thermostat. If your fryer does not have a computer but does have a thermostat behind the door, this is a thermostat behind the door model. That means that the knob behind the door controls the solid state temperature module behind the fryer's control panel (front bezel). The backup thermostat includes the temperature adjustment knob, temperature sensor inside the fryer tank, and connecting capillary tubing. The high limit controls also has a temperature sensor in the fryer tank, so ensure you are removing the correct temperature sensor.

CAUTION

Thermostat capillary tubing is very delicate. Be VERY CAREFUL when working with the capillary tubing. If the tubing is kinked or broken the thermostat is no longer usable.

- a. Drain the oil from the fryer. The thermostat probe (heat sensor) is clamped to the heating element assembly inside the tank. Unscrew and remove the two screws in the thermostat probe clamp.
- b. Remove the thermostat probe from the clamp and straighten the capillary tubing. Unscrew the small hex nut inside the cabinet under the tank for the thermostat control.
- c. Unscrew the large connector nut from the fryer tank and pull the thermostat probe and capillary tubes through the opening.
- d. Pull the knob off of the thermostat. Remove the entrance box cover to gain access to the thermostat.
- e. Mark and disconnect the wires from the thermostat terminals.
- f. Remove the two screws that hold the thermostat to the inside of the entrance box. Remove the defective thermostat control unit from the fryer.
- g. Install the new thermostat in reverse order. Remember to be careful with the capillary tubes.

- h. Use pipe joint compound on the large fitting before installing to prevent oil leakage. DO NOT use joint compound on the small nut.
- i. Perform the calibration procedures detailed in section 1.5.3.

4.1.3 Calibrating the Thermostat - Computer Models Only

To calibrate this thermostat the dial must be removed from the shaft. The adjustment for the thermostat is inside the dial shaft.

- a. To calibrate the thermostat you must first cause the computer to switch control to the backup thermostat. To do this, remove the computer from the front panel and disconnect the connector from the computer. The transfer relay will de-energize and temperature control will shift to the backup thermostat.
- b. Place the tip of a high accuracy thermometer in the shortening approximately 1" above the temperature sensor.
- c. Set the thermostat dial to 325°F and turn the fryer on.
- d. Remove the thermostat dial by pulling the knob straight out. DO NOT rotate the dial.
- e. Hold the outside of the shaft so it does not move. Use the tip of a small, flat tip screw driver to scrape away the sealing compound from the adjustment screw. Turn the adjustment screw clockwise to lower the temperature setting, and counterclockwise to raise the temperature. One quarter turn will change the temperature approximately 25°F.
- f. Turn the adjustment until the heating elements turn off at 325°F. Replace the knob and allow the fryer to cycle 4 to 6 times. Check the temperature of the thermometer against the thermostat dial, if it is greater than 5°F repeat the calibration procedure.
- g. When the calibration is correct, remove the thermometer.

4.2 TESTING CONTACTORS (RELAYS)

Contactors and relays use a control voltage to energize the electro magnet and close a set of contacts. The control voltage is applied to a solenoid-type coil. When measuring a coil's resistance, ensure that you have disconnected it from the fryer's electrical system. This will ensure that you are measuring the coil's resistance and not a portion of the fryer's wiring. When measured with an OHM meter these coils should have a very low resistance, less than 100 ohms. Measure each of the contactors that are suspect. If any relay or contactor indicates an open circuit or high amount of resistance, replace the coil.

4.3 TESTING HEATING ELEMENTS

To check a heating element first place the OFF-ON-START switch in OFF. Check the elements by performing the following:

- a. The terminal block that connects the heating elements to the fryer is located behind the large rear access panel. Move the fryer out and remove the access panel.
- b. Using an OHM meter check continuity from one end of the element to the other. The reading should be very low (a few ohms). If the element indicates an open circuit, replace the element.
- c. Next check from the hot side of the element to ground. It should be infinite, if it is not replace the element.

4.4 TESTING THE TEMPERATURE SETTING POTENTIOMETERS

The temperature setting potentiometer is a variable resistors. To test the potentiometer ensure that the OFF-ON-START switch is OFF and perform the following:

- a. For thermostat knobs mounted on the front of the fryer, remove the front bezel to gain access to the back of the potentiometer. If the fryer has the thermostat knob mounted behind the door (in the entrance box), remove the entrance box cover to gain access to the back of the potentiometer.
- b. Disconnect P10 from J10.
- c. Connect an ohm-meter to pin 3 (yellow wire) and pin 1 (violet wire) and rotate the temperature control knob. The resistance should vary from 0 to 900 ohms.
- b. Connect the ohm-meter between pin 3 (yellow wire) and pin 5 (orange wire) and rotate the knob. The resistance should again vary from 0 to 900 ohms. If the resistance is not within the ranges specified replace the temperature setting potentiometer.

4.5 TESTING THE TEMPERATURE CONTROL MODULES

The temperature control module receives 24 VAC when the OFF-ON-START switch is ON. To test the temperature control module perform the following:

- a. The temperature control module is located behind the front bezel. Remove the two screws that hold the bezel in place and move out of the way.
- b. Place the OFF-ON-START switch in ON and the Melt switch in OFF. This will apply 24 VAC to pin 1 (black wire) with pin 3 as the common (white wire) of the temperature control module.

- c. Set the temperature setting potentiometer to a temperature above the shortening's current temperature. This will cause the temperature control module to close and pass 24 VAC to pin 12 (gray wire) of the control module.
- d. Check the temperature probe as described in section 4.6.
- e. If the temperature probe test passes and there is not 24 VDC present on pin 12 of the control module, replace the temperature control module.

4.6 TESTING THE TEMPERATURE PROBE

WARNING

All power supplies must be disconnected before servicing the appliances. Some appliances have more than one power supply. Make sure they are ALL disconnected.

The temperature probe is a special type of resistor called a thermistor. Check the temperature probe by performing the following:

- a. Gain access to the temperature probe connection by removing the front panel. Disconnect P10 and check the resistance of the probe at pins 2 & 4 of P10.
- b. Place the OFF-ON-START switch in OFF. Use an ohm-meter to measure the resistance across the probe. It should be about 100K ohms at room temperature (72°F, 22°C). If the probe indicates an open or more than 200 ohms away from 100K ohms, replace the probe.
- c. Re-install the probe wires and turn on the fryer. Start the fryer and raise the shortening temperature to normal cooking temperature, approximately 350°F.
- d. Unplug the temperature probe and measure the resistance again. It should read approximately 923.8 ohms \pm 10 ohms. If the resistance is different by more than 10 ohms, replace the temperature probe.

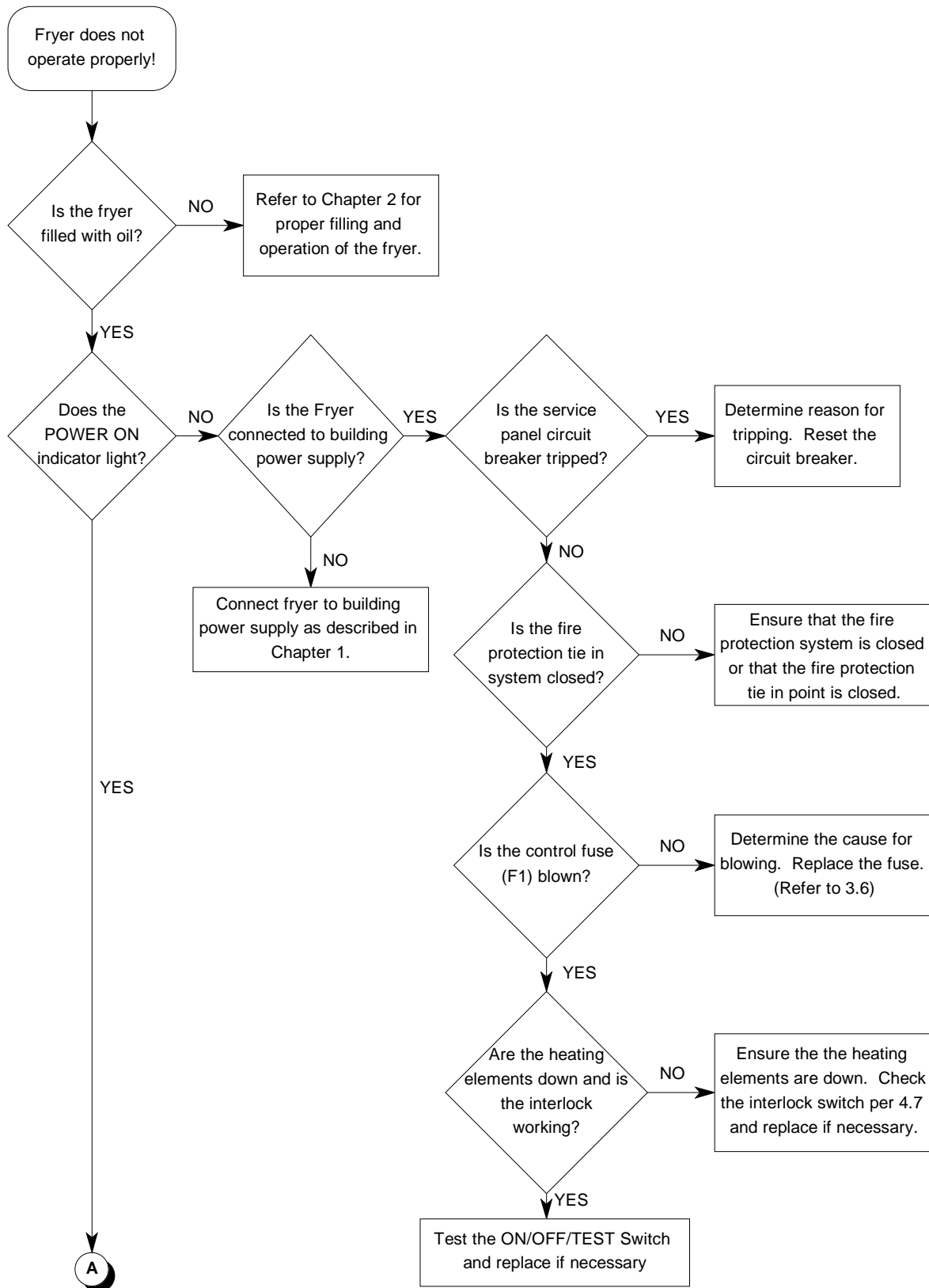
4.7 TESTING THE HEATING ELEMENT INTERLOCK

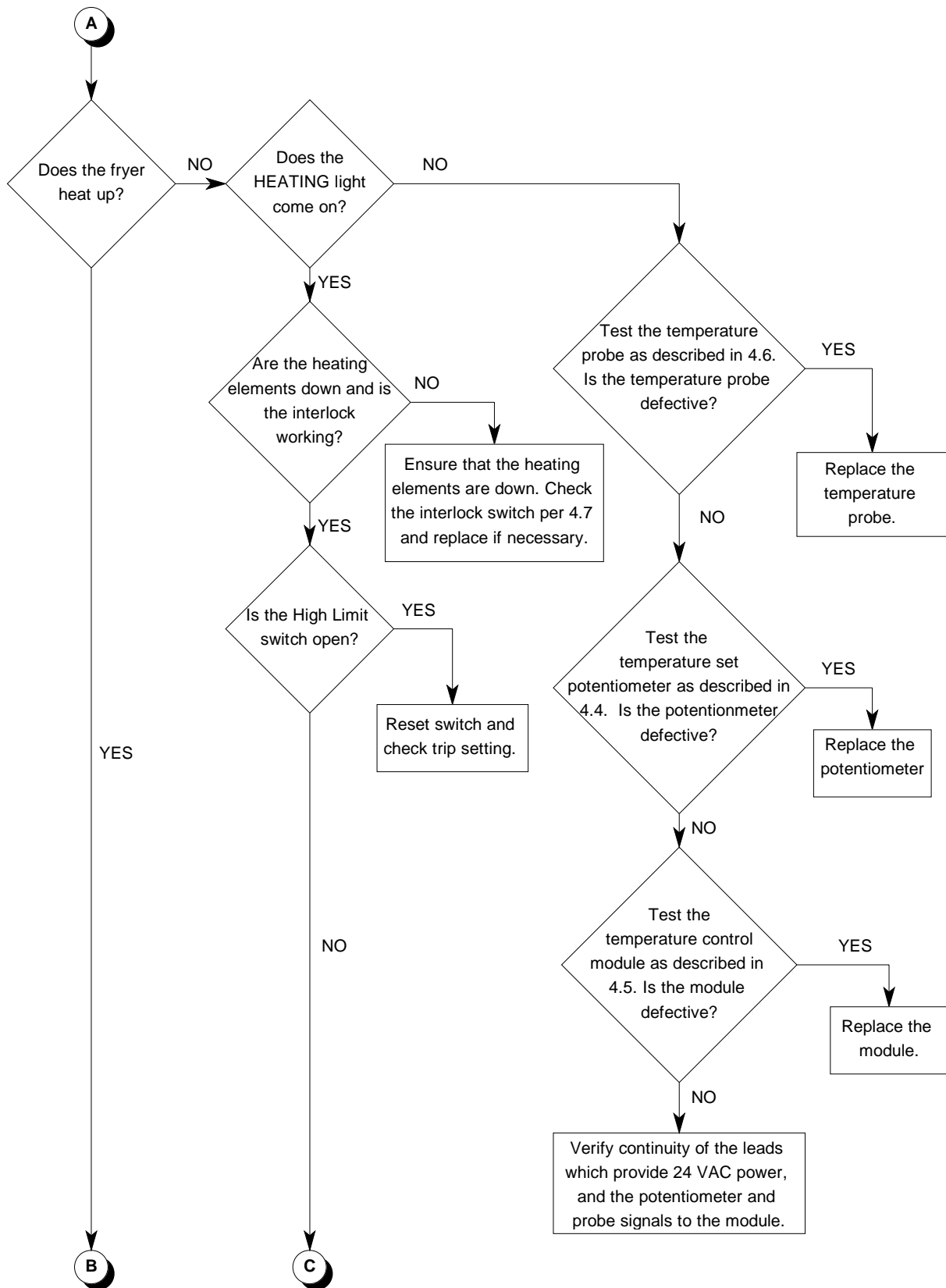
The heating elements are protected from accidental over heating, due to lifting them out of the oil while unit is ON, by an interlock limit switch. The switch is located on the right side (opposite the High Limit switch) of the heating element pivot box.

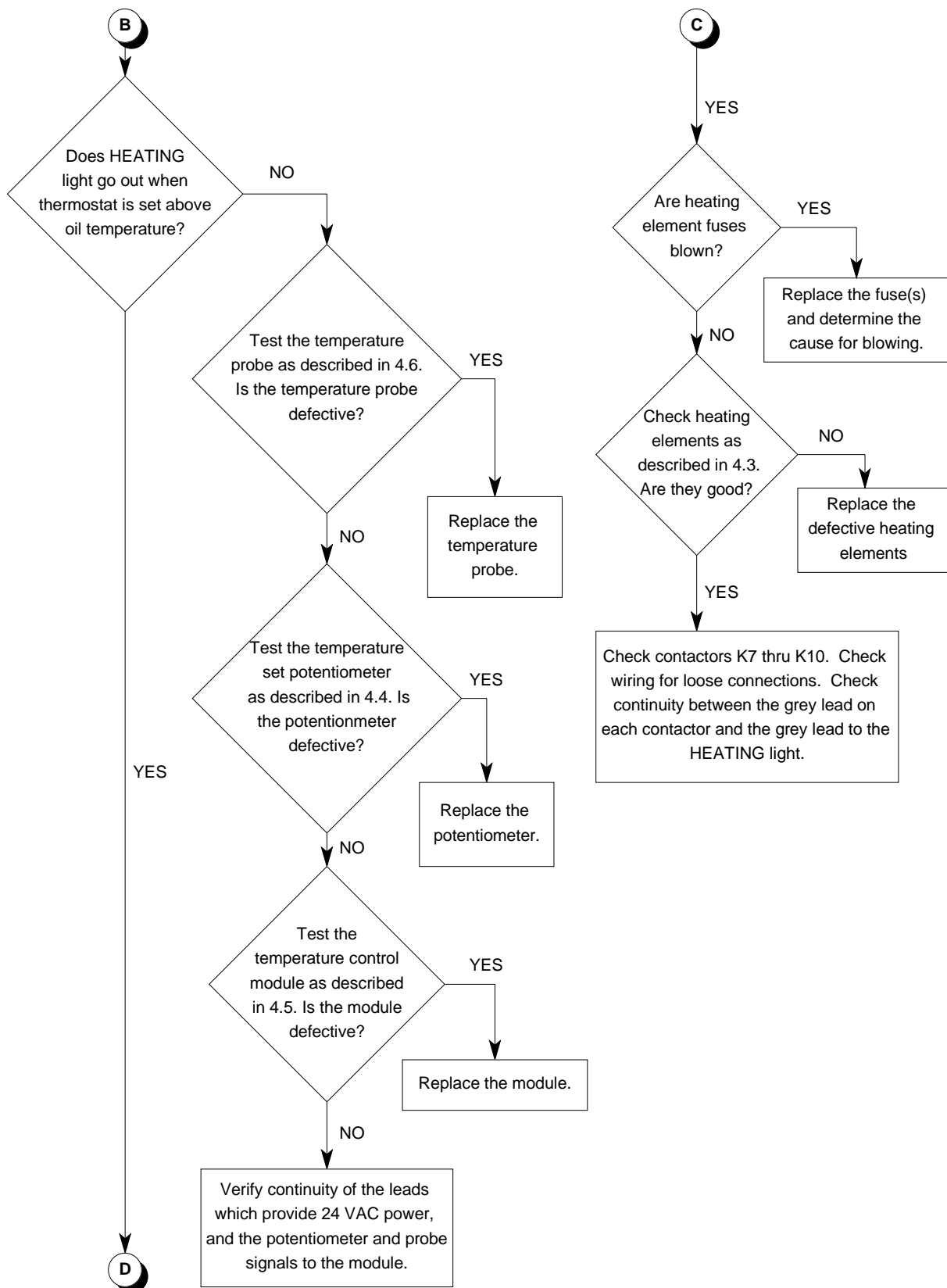
- a. This test requires that you gain access to the back of the interlock switch. Remove the four screws from the small access plate on the top, right of the pivot box. Gently move the wiring harness to the side to expose the wiring terminal of the interlock switch.

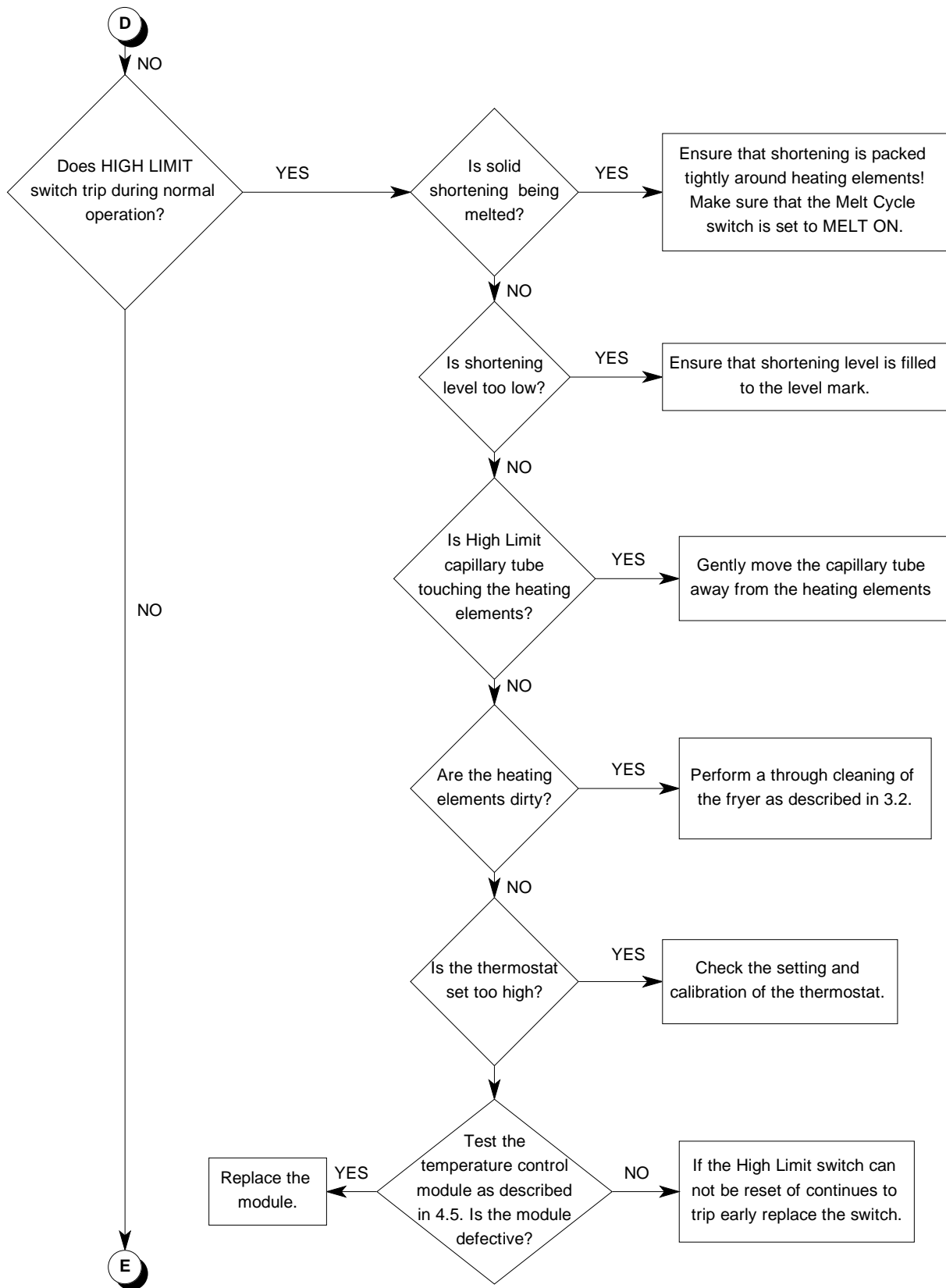
- b. Connect an ohm-meter across the switch terminals to measure the resistance across the limit switch connection.
- c. When the elements are down in the tank the interlock switch is closed and the resistance across the switch will be zero.
- d. Lift the element rack up while continuing to measure the resistance across the switch. The rack only needs to be lifted a short distance to open the switch. A click should be heard when the switch opens. The resistance will go up significantly when the switch opens. The resistance will not be infinite unless the switch wires are disconnected. If there is any doubt about the resistance, remove the wires and check the resistance. With the wires removed the resistance will be infinite.

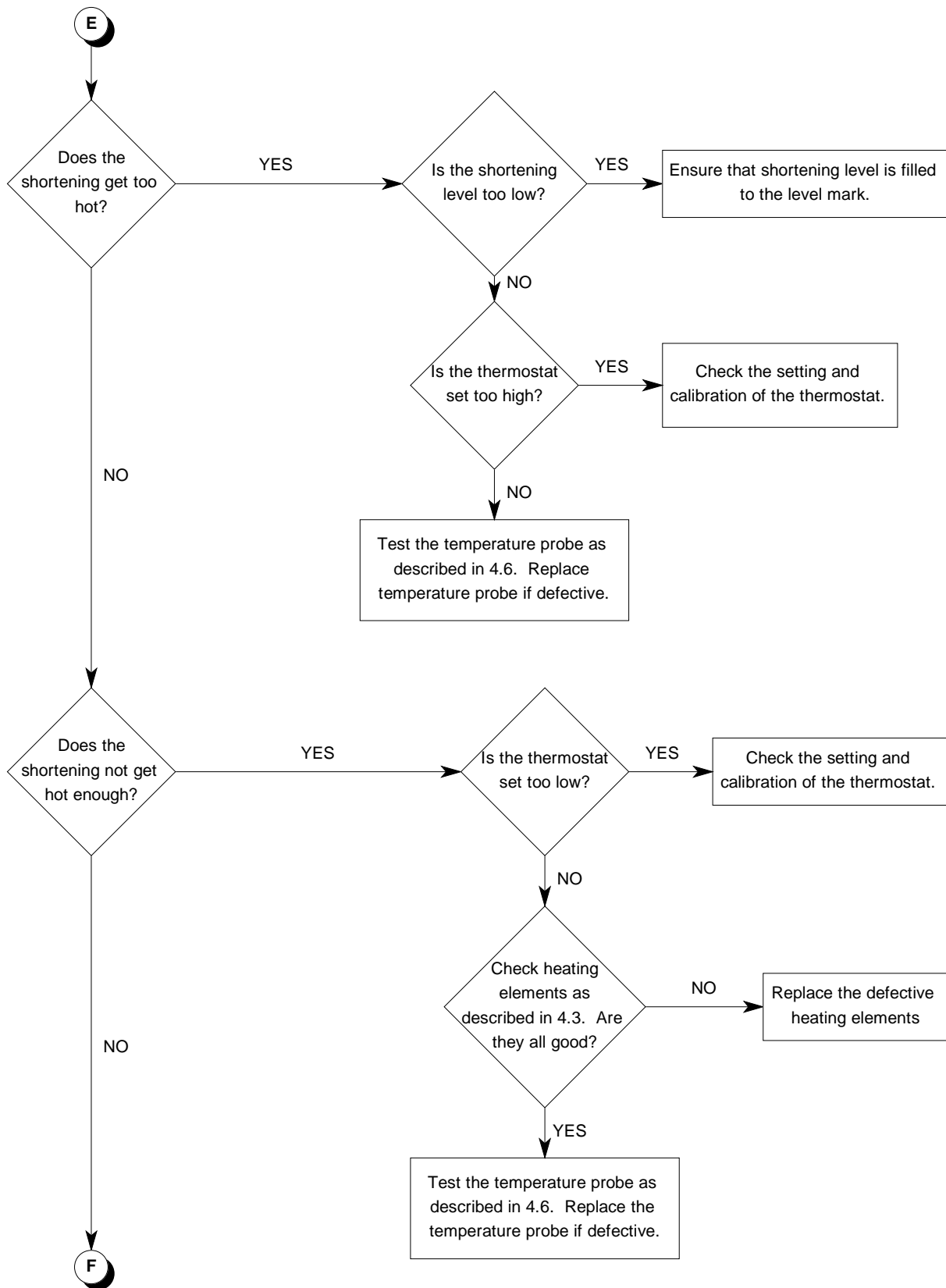
4.8 TROUBLESHOOTING FRYERS WITHOUT COMPUTERS

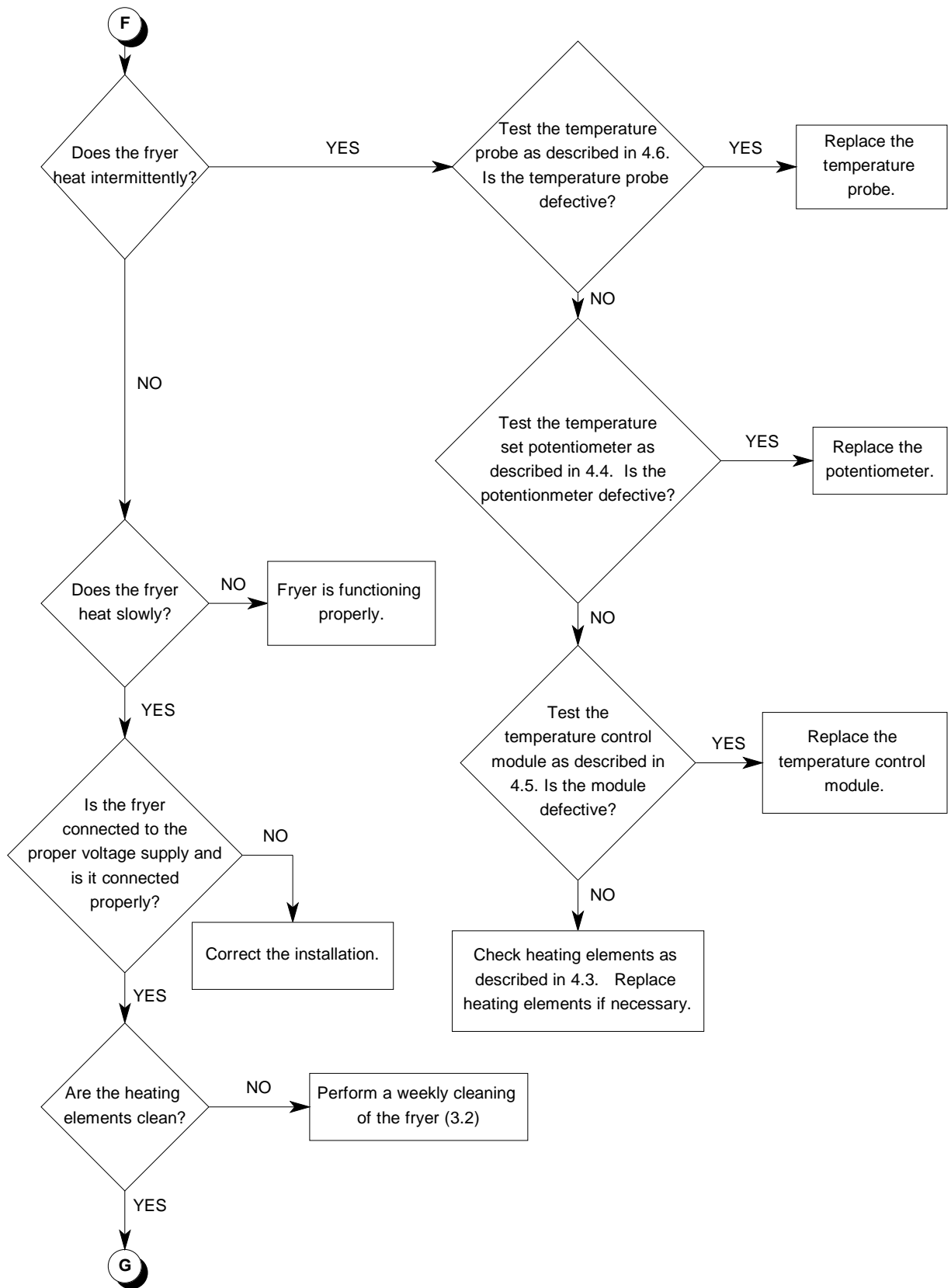


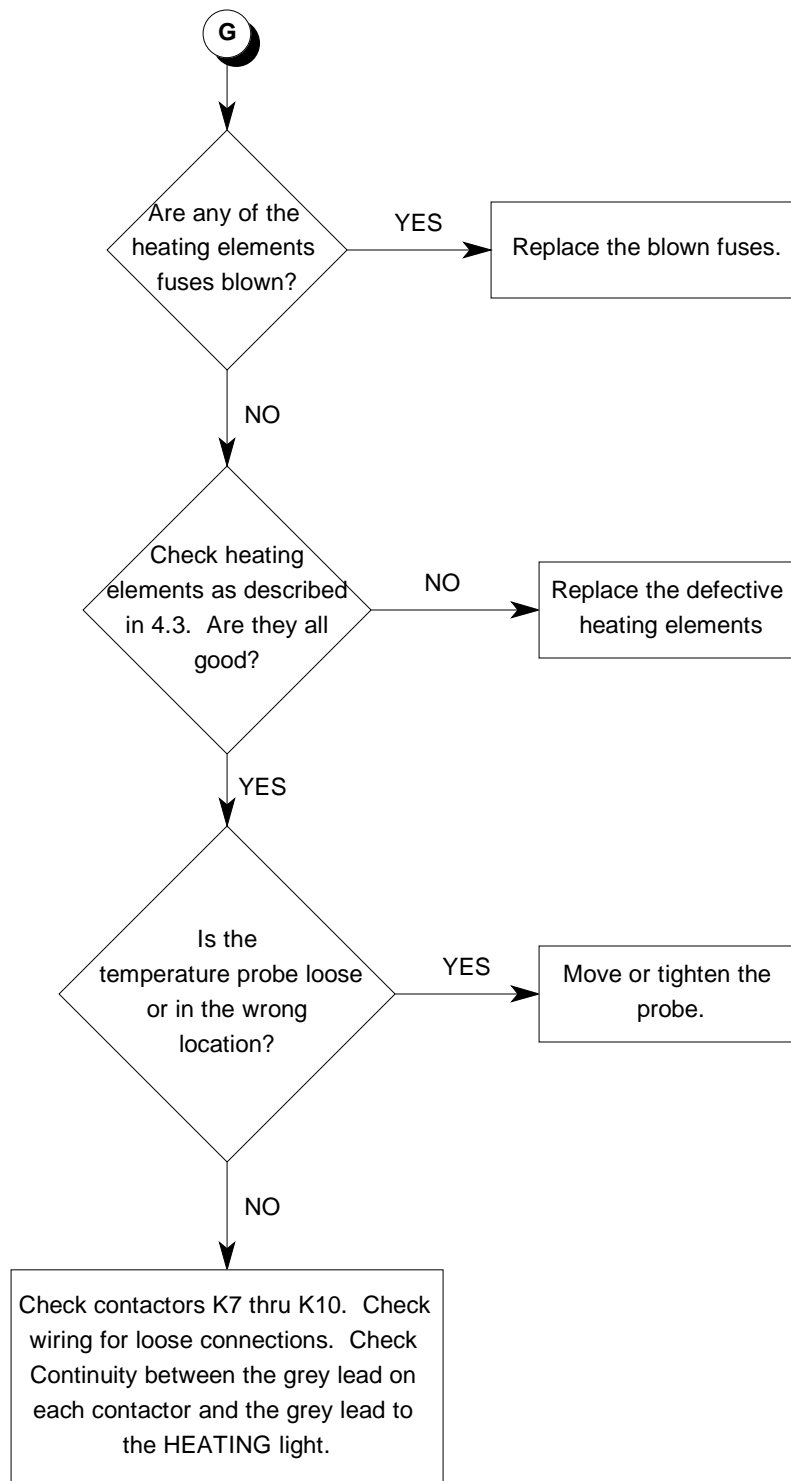




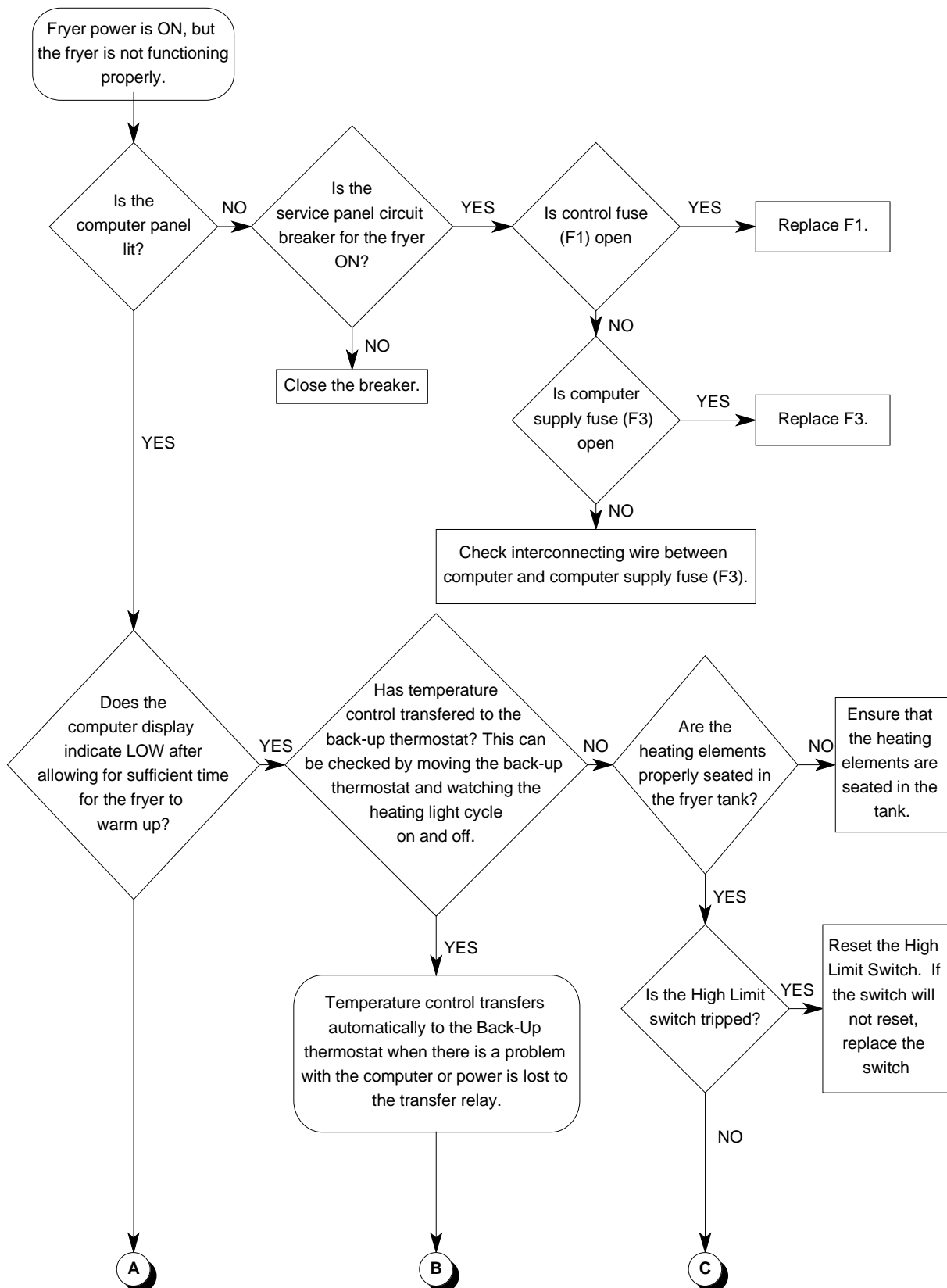


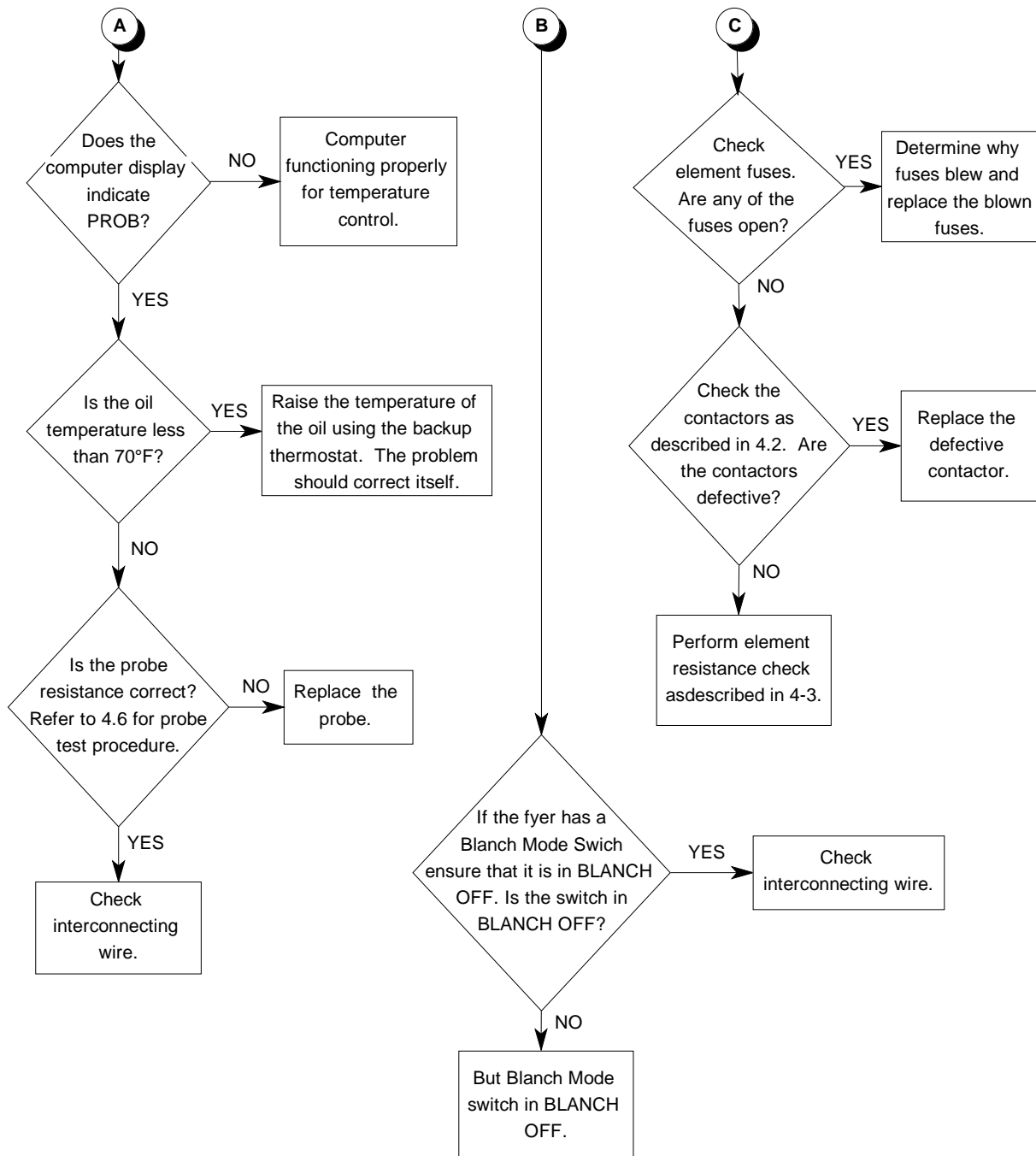




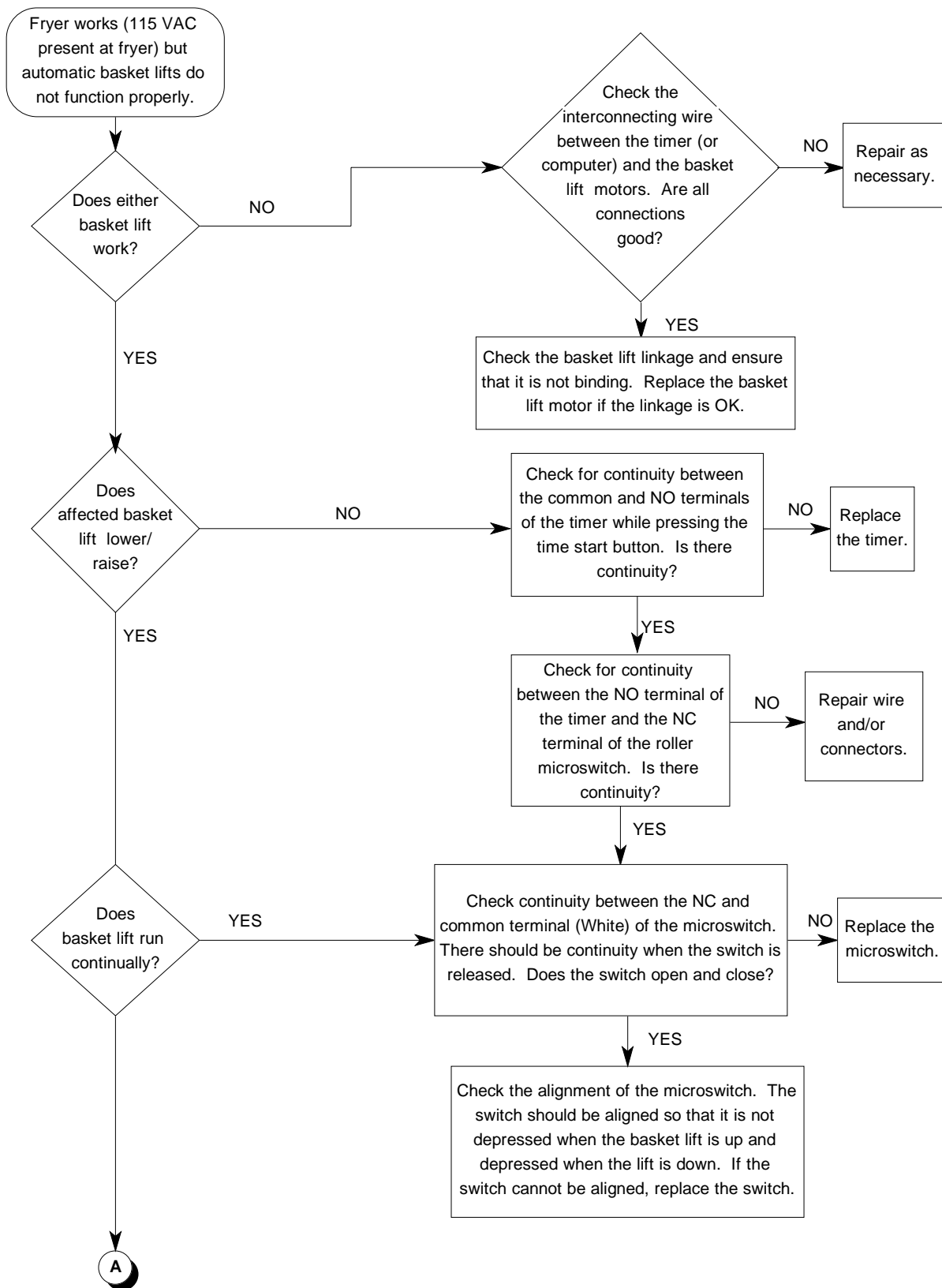


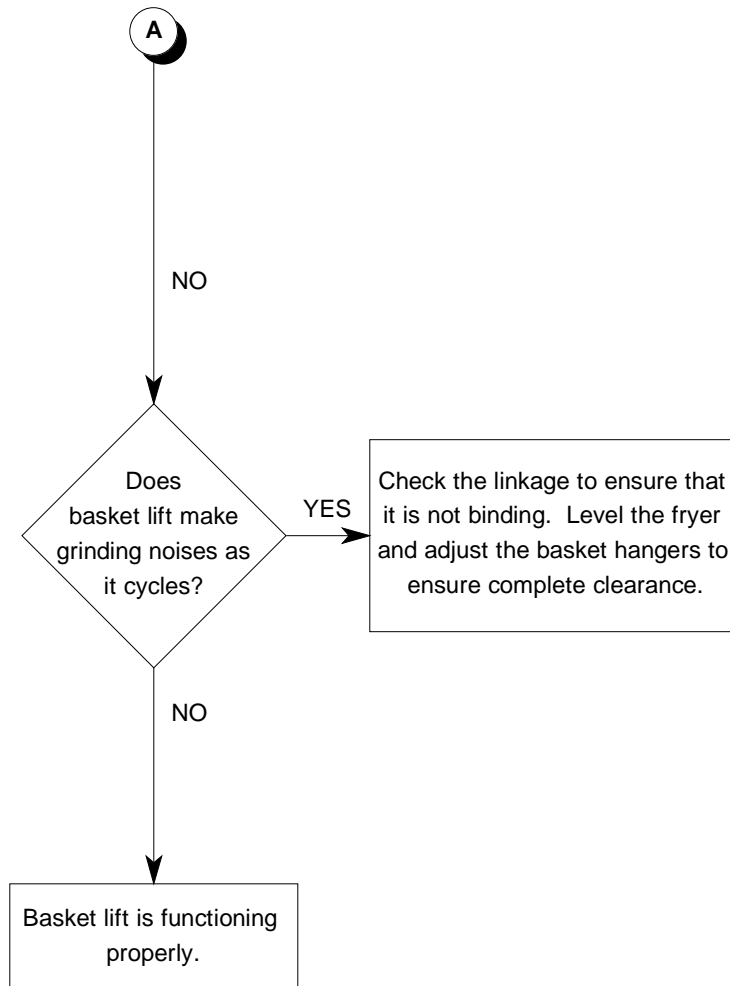
4.9 TROUBLESHOOTING FRYERS WITH COMPUTERS



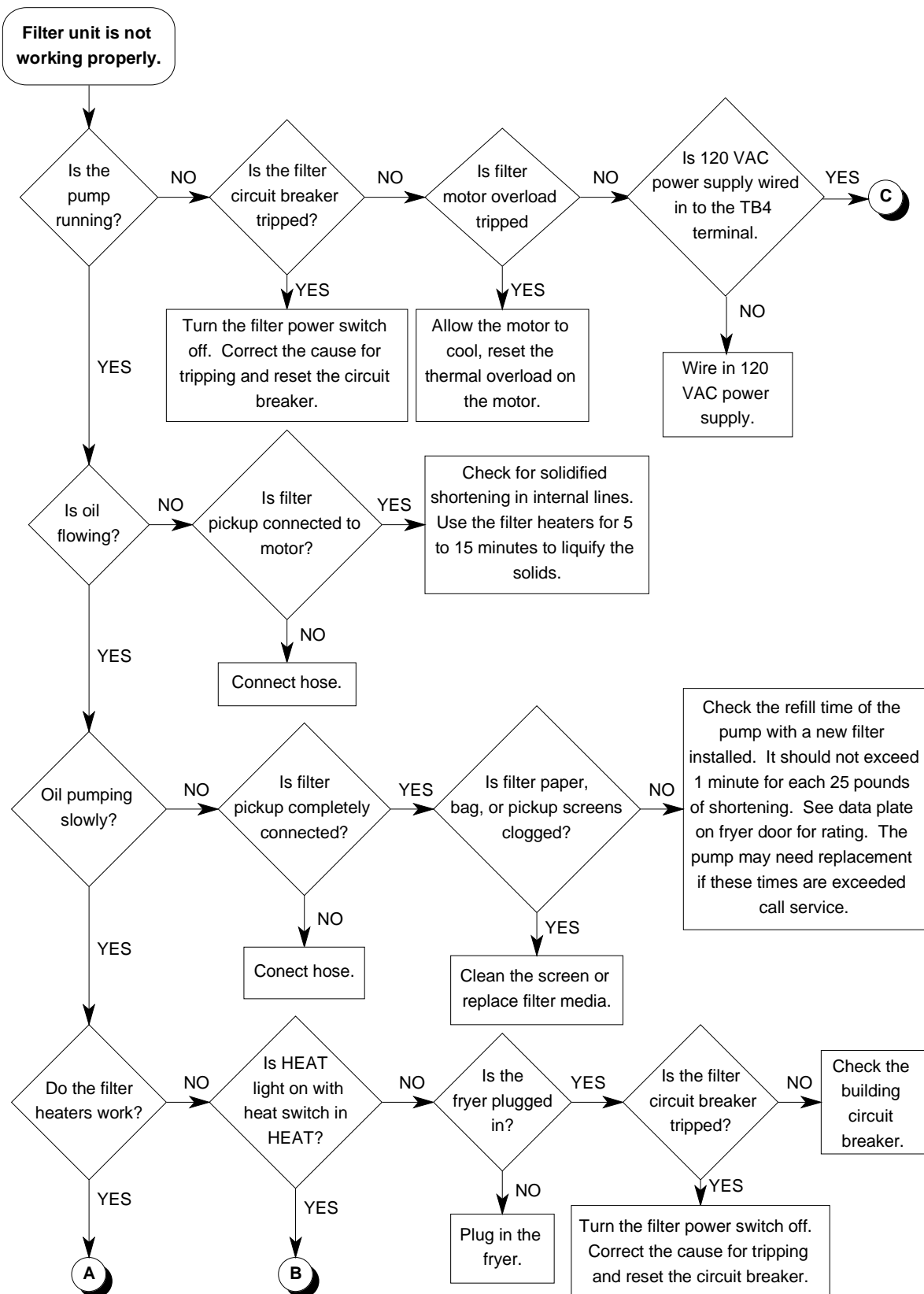


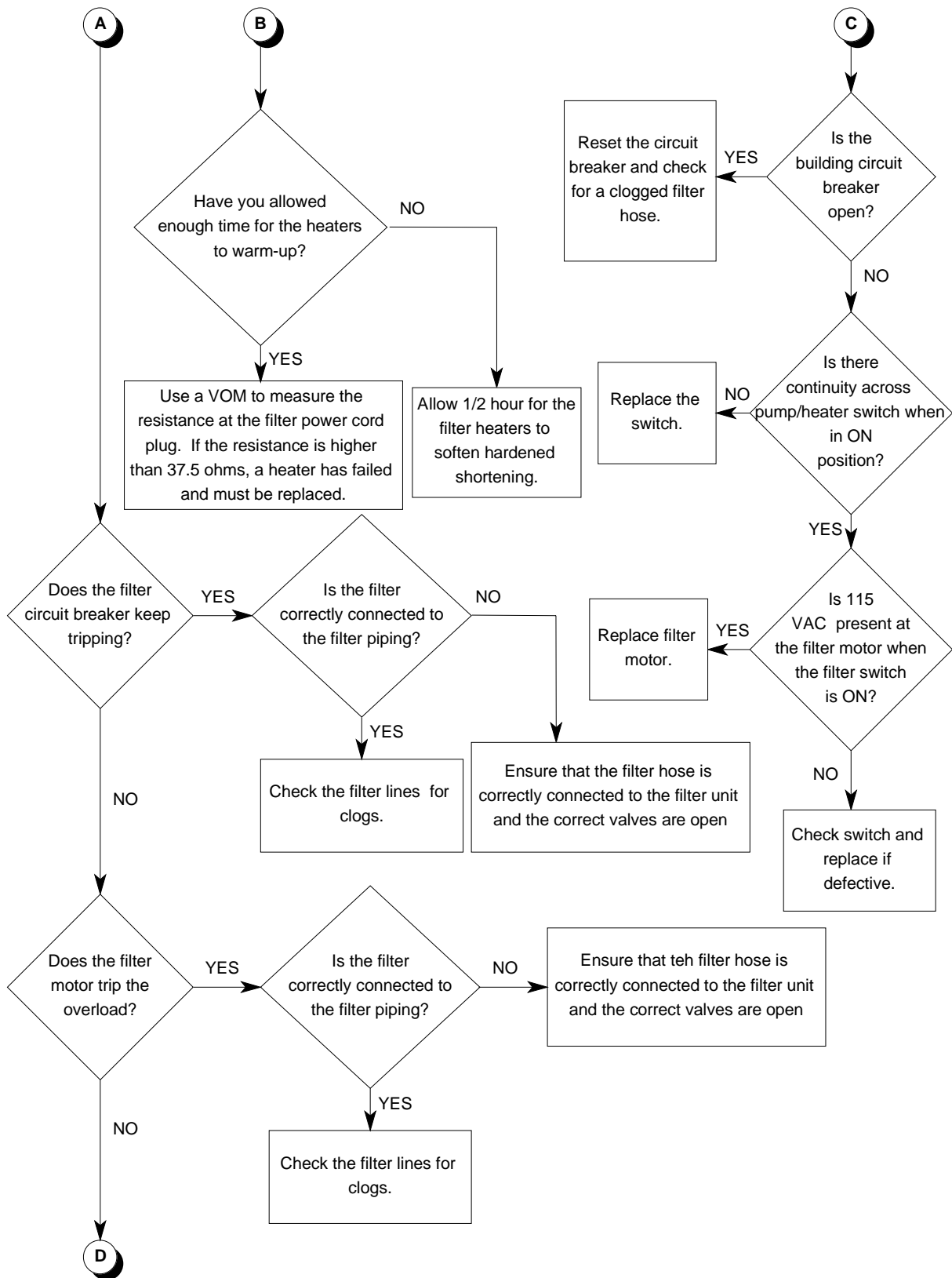
4.10 TROUBLESHOOTING BASKET LIFT PROBLEMS

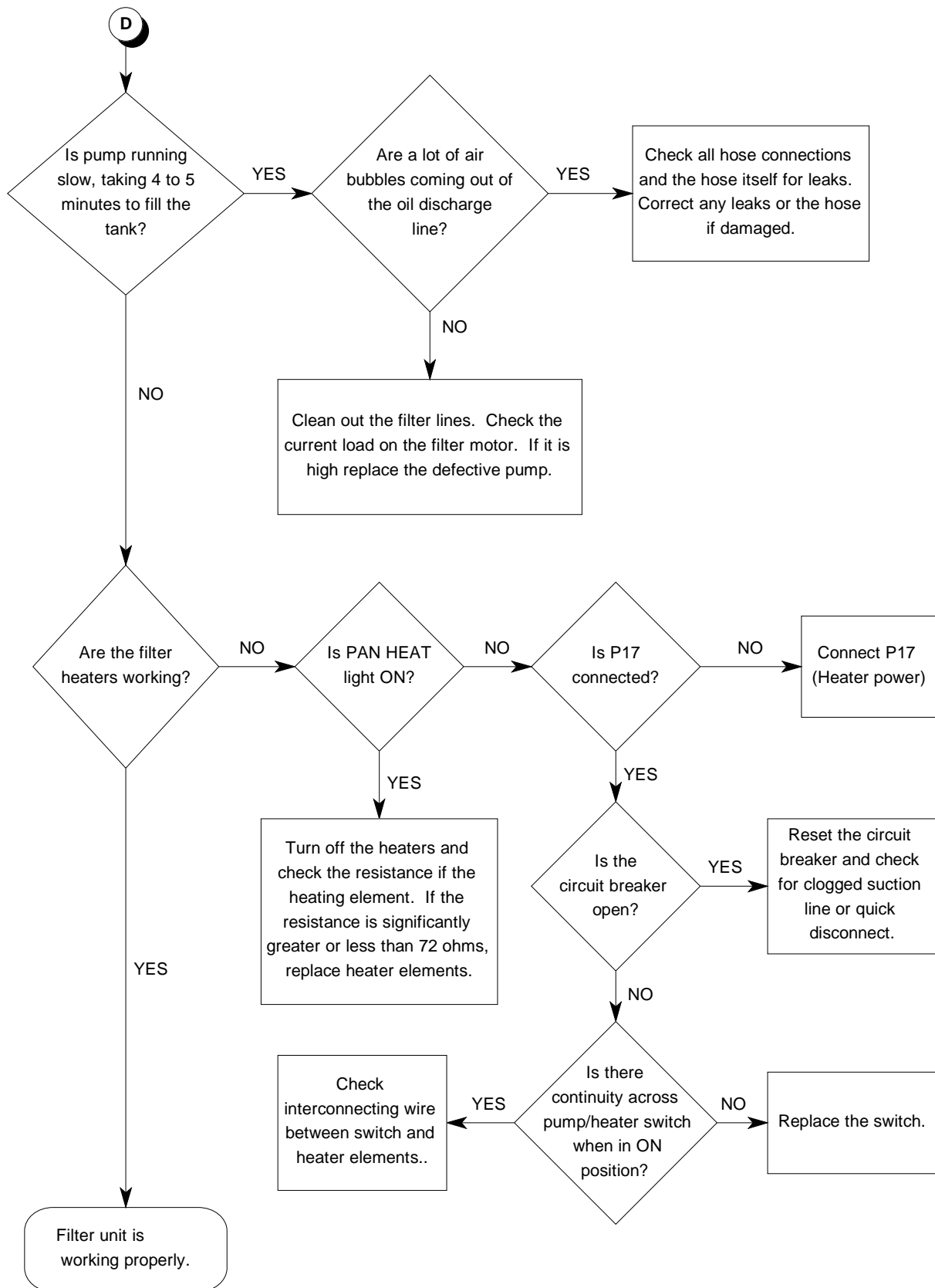




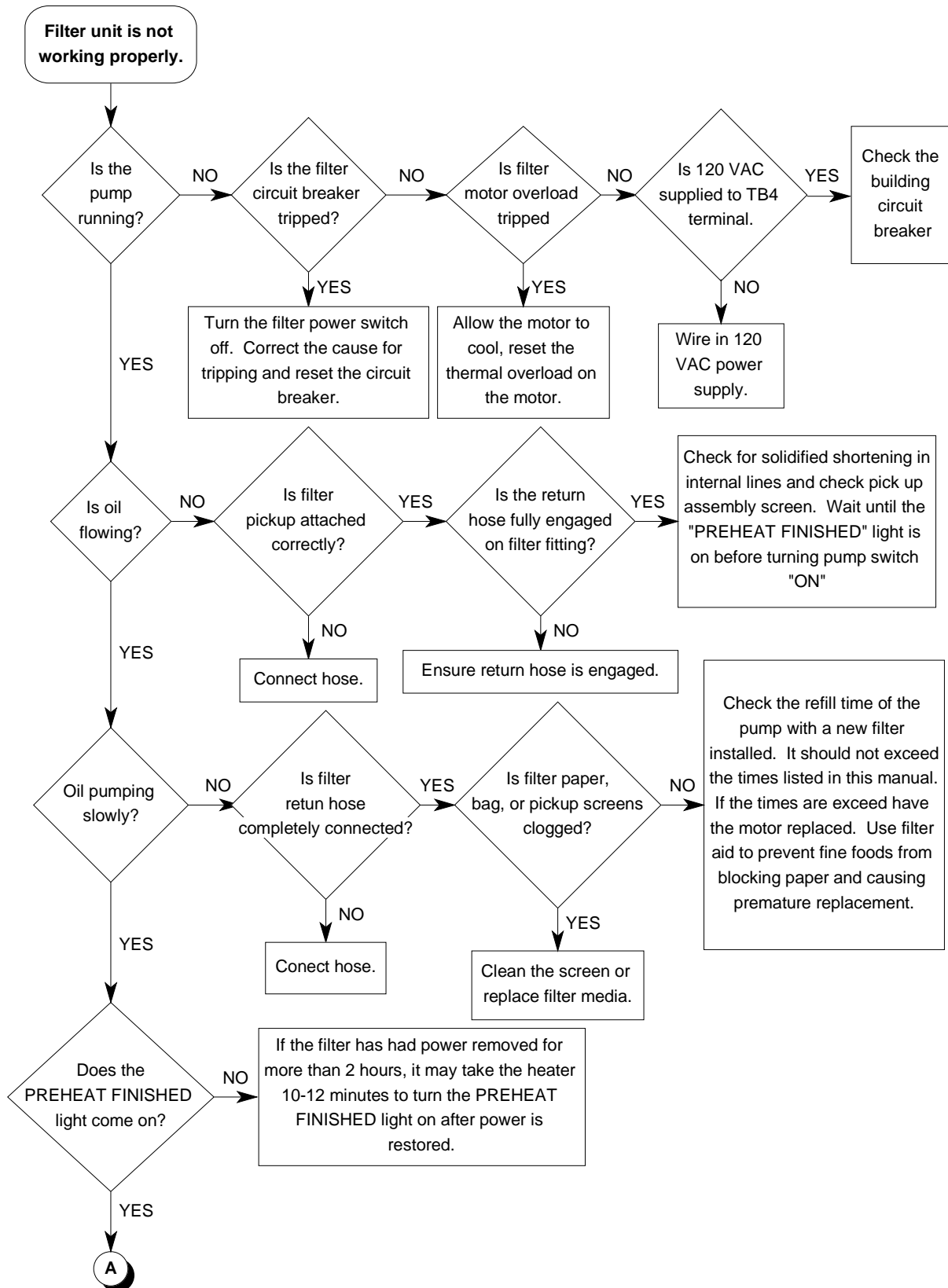
4.11 TROUBLESHOOTING BUILT-IN FILTER UNITS

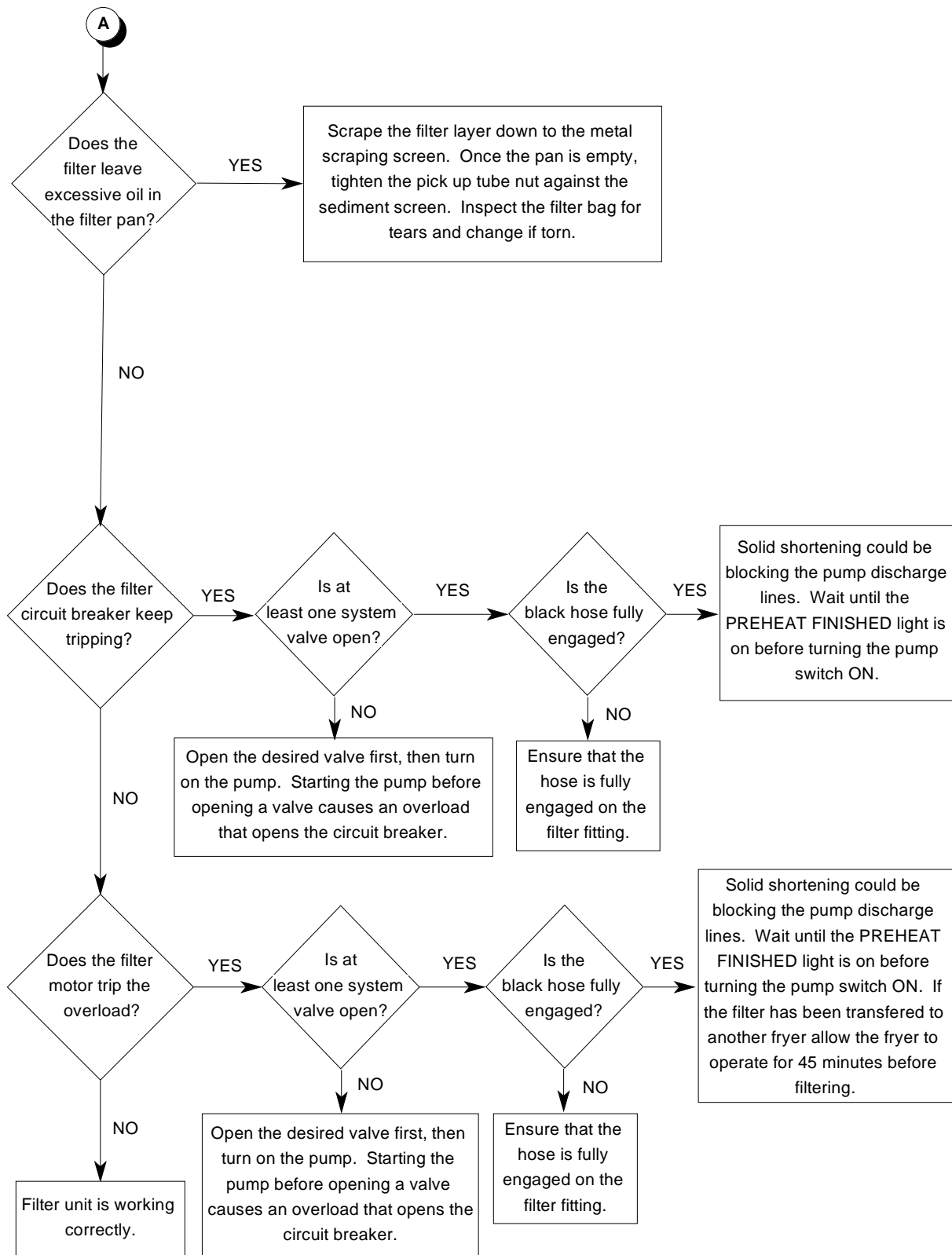






4.12 TROUBLESHOOTING UFM FILTER UNITS

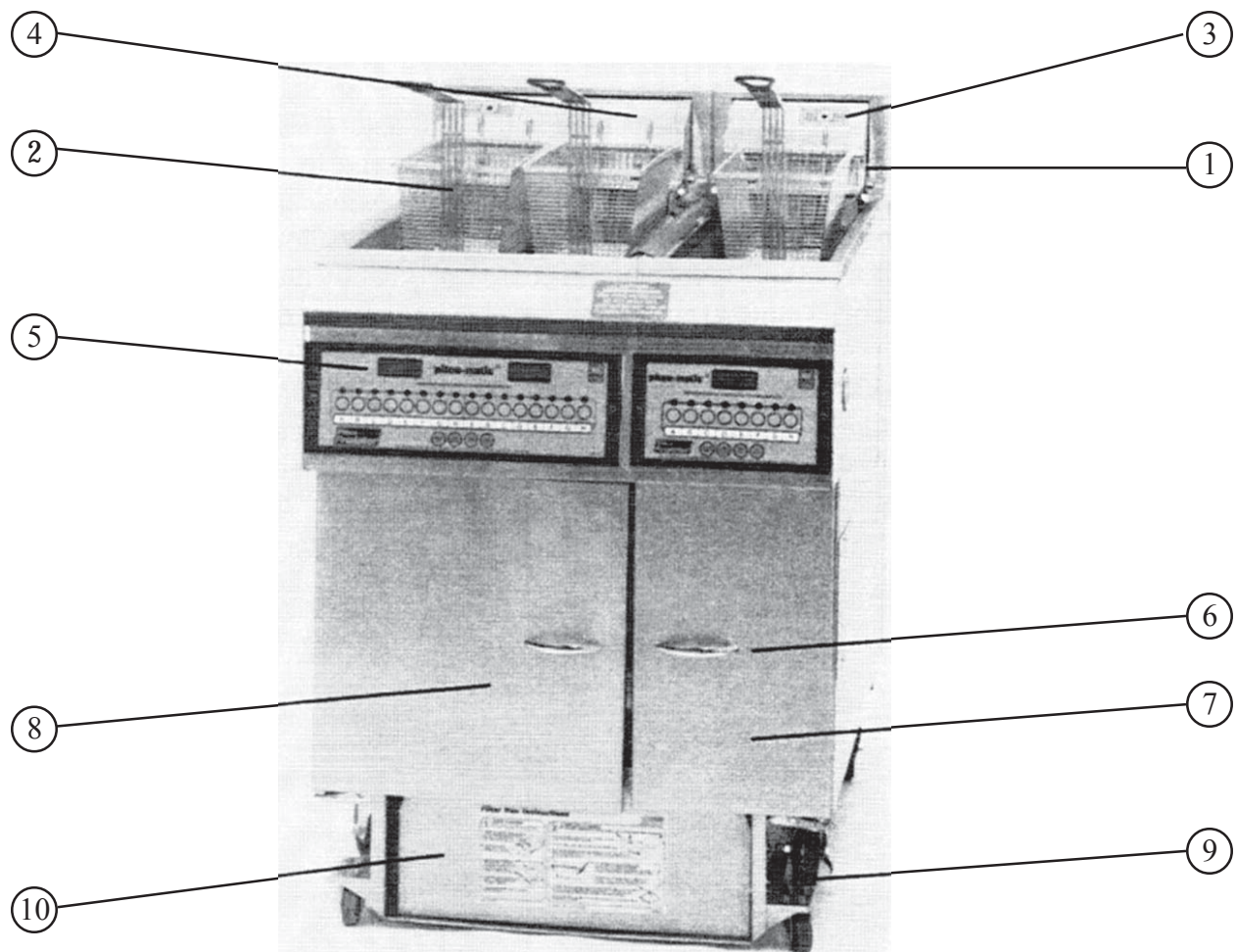




Chapter 5: Parts

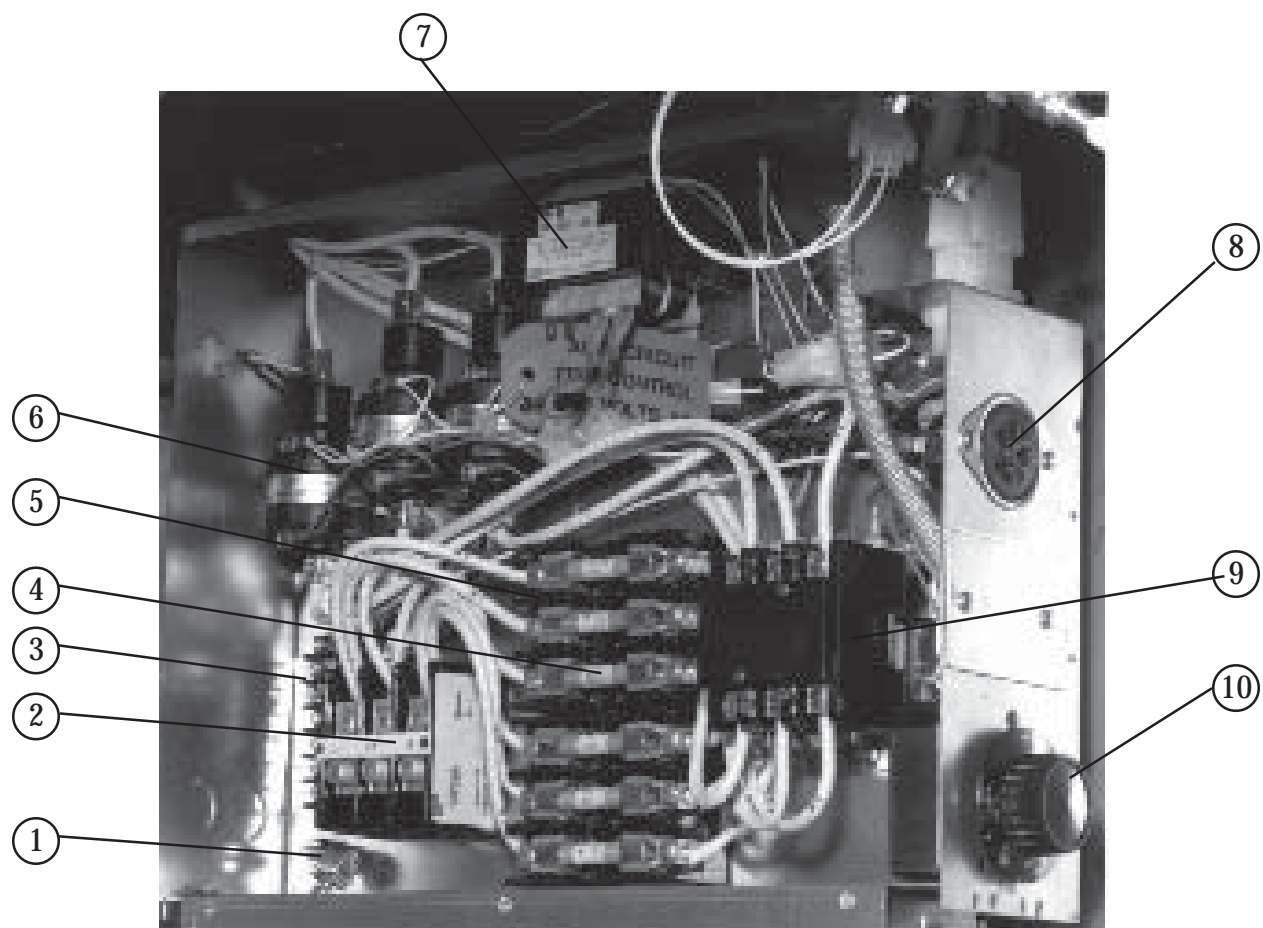
This chapter contains listings of the components used in the different models of universal fryers. These components are listed in two places, with the illustration and in ordered listings. The illustrations in this chapter are provided to show relative location of components located in the fryer. The fryer you have may not be illustrated in this chapter, but the part locations should be the same. With each illustration there is a table of components in numerical order by illustration number. The illustration has numbered lines pointing to components which are listed in the table.

At the end of this chapter there are alphabetical and numerical listings of all parts used in the universal fryers. The alphabetical part list is arranged in alphabetical order according to the part name. Each part name also has the Pitco Frialator part number. The numerical list is in Pitco Frialator part number order. A brief description of each component is provided for each part.



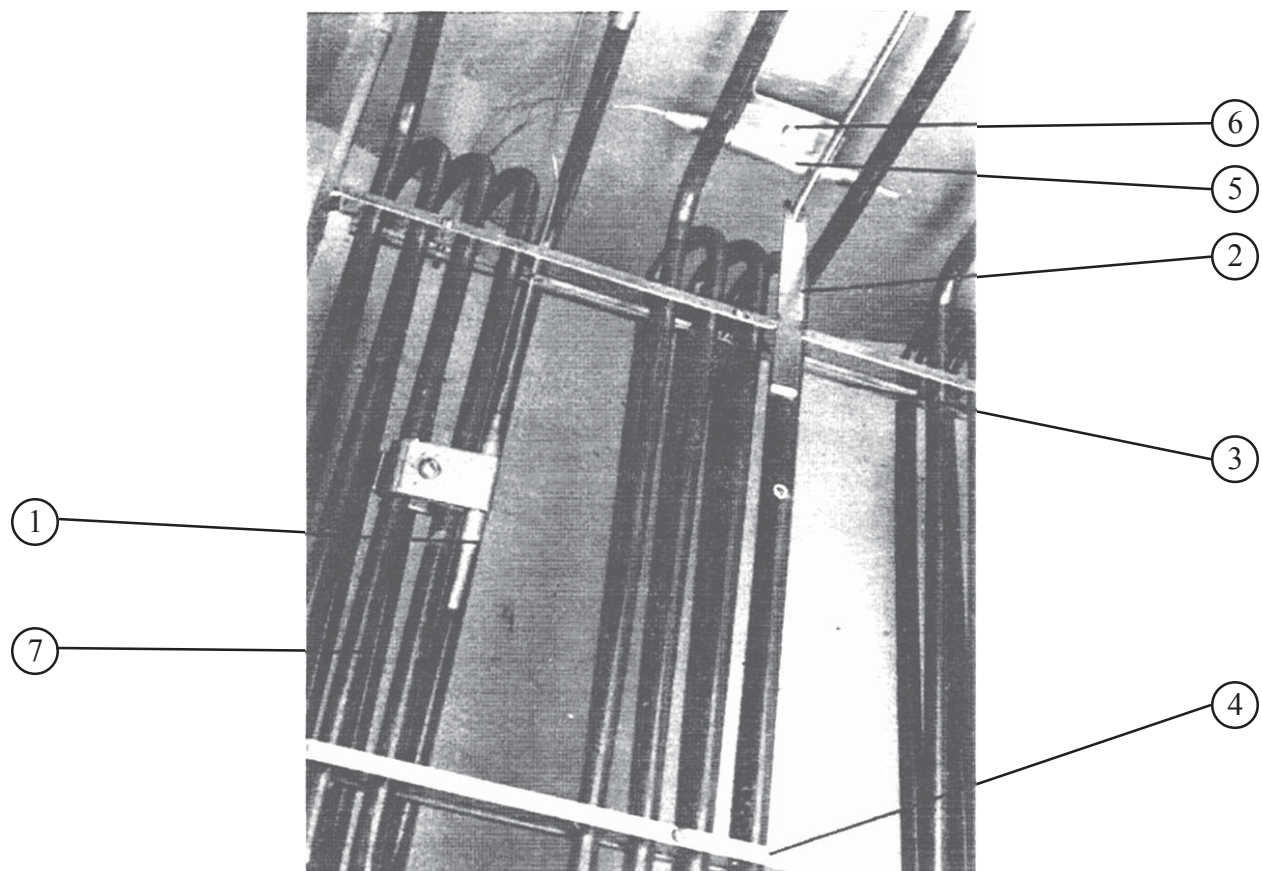
Index Number	Description	Index Number	Description
1	Basket Hanger		
2	Basket		
3	High Limit Cover		
4	Interlock Switch Access Cover		
5	Computer		
6	Door Handle		
7	Right Hand Door		
8	Left Hand Door		
9	Caster Set		
10	UFM Filter Module (Optional)		

Figure 5-1 Outside View



Index Number	Description	Index Number	Description
1	Ground Lug		
2	Terminal Block		
3	Terminal Block		
4	Fuses (6)		
5	Fuse Block		
6	Contactor, Mercury		
7	Transformer		
8	Receptacle		
9	Contactor, Mechanical		
10	Thermostat Knob		

Figure 5-2 Entrance Box



Index Number	Description	Index Number	Description
1	Auxiliary Thermostat Probe		
2	Computer Probe Clamp		
3	Computer Probe		
4	Element Bottom Bar		
5	Bracket Screens		
6	Element Rack		
7	High Limit Probe		
8	High Limit Probe Clamp		
9	Element		

Figure 5-3 Inside Fryer Tank Components

THIS PAGE INTENTIONALLY LEFT BLANK.

Table 5-1 Frame-Cabinet / Electrical Assemblies With Components

Item Number	Pitco Frialator Part Number	Description	Quantity Per Unit
1	B7446005	Pan Liner #14	1
	B7446006	Pan Liner #18	1
2	A6611401	Stop #14	1
	A6611403	Stop #18	1
3	P5046980	Heater Strip	2
4	P6071448	Plug Hole 2"	1
5	A6613101	Cover, Side	1
6	A1819602	Bracket, Door Magnet	1
7	P6071300	Magnet	1
8	B3900101	Leg Set	1
9	B7402238	Bracket, Circuit Breaker	1
10	PP10104	Circuit Breaker	1
11	PP10082	Light, 125V Amber	1
12	PP10195	Screw, Button Head Hex	2
13	A6042801	Overlay	1
14	PP10375	Switch, Rocker	1
15	B3600202	Front Panel Weldment	1
16	B7230202	Hinge, Top Door	1
17	B2301208	Door #14	1
	B2301210	Door #18	1
18	P6071516	Handle, Door	1
19	B7230302	Hinge, Bottom Door	1
20	P0075200	Screw, 2 #8 x 1/2 Self Drill	10
21	PP10686	Screw 6-32 x 1/4	2
22	PP10025	Screw 10-32 x 1/4	2

Revised 5/28/93

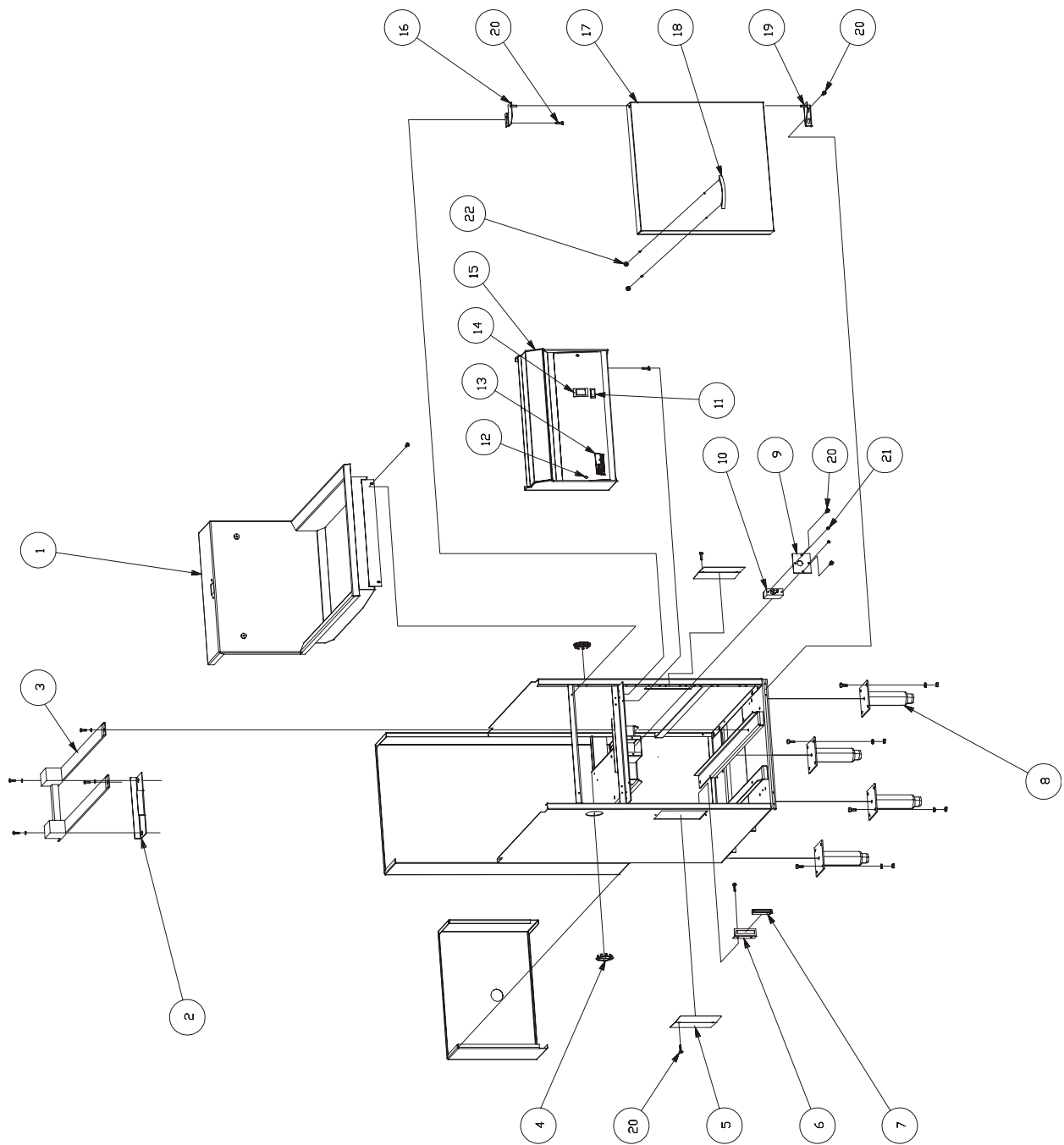


Figure 5-4 Frame-Cabinet / Electrical Assemblies With Components

Table 5-2 UFM Filter, Frame/Electrical Assembly

Item Number	Pitco Frialator Part Number	Description	Quantity Per Unit
1	B6621101	Filter Frame, Weldment	1
2	A6683002	Filter, Cover Motor	1
3	A6685702	Filter, Bracket Mounting Cover	1
4	A6684202	Filter, Cover Tubing	1
5	A6684502	Filter, Cover Tubing Cap	1
6	PP10741	Filter, QD SNP 23 Nipple	1
7	A6683802	Filter, Guard Tubing Channel	1
8	A6683102	Filter, Panel, Switch	1
9	PP10331	Lamp, 125V Green Rectangular	1
10	PP10735	Switch, Rocker DPST 15A, with Breaker	1
11	A6055801	Label, Overlay Filter Module	1
12	A7680402	Plate, Switch Pasta	1
13	A6683302	Filter, Box Electrical Body	1
14	P6071062	Caster, 2" With Top Plate	4
15	P0011300	Screw, 10-24 x 3/8" Indent Hex	16
16	PP10176	Nut, Center Lock 10-24	16
17	PP10147	Clip, Cable 0.375 ID	2
18	PP10107	Bushing, Strain Relief	1
19	B6717901	Wiring, Cord, Filter with Termination	1
20	P0093300	Nut, Hex (KEP) 1/4-20 ZN	5
21	A6682802	Filter, Guide CA	1
22	B6717101	Wiring, Cable Filter Assembly	1
23	PP10192	Bushing, Strain Relief 90	2
24	PP10460	Switch, Rocket Circuit Breaker SPST 8A 125V	1
25	PP10119	Label, Warning Motor Reset	1
26	P6071490	Plug, Hole 7/8" Plated	2
27	PP10692	Screw, 10-24 x 5/16" TH Phillips ZN	5
28	PP10752	Screw, 10-32 x 1/2" Thread Roller	18
29	P0000100	Screw, 6-32 x 7/8" RH ZN	2
30	P009100	Nut, Hex 6-32 ZN (KEP)	2
31	P0075200	Screw, TEK 2 #8 x 1/2" SLF DR	1
32	P6071497	Plug, Hole 3/4" Plated	1
33	B6622301	Hose Assembly With Quick Disconnect	1

Revised 5/28/93

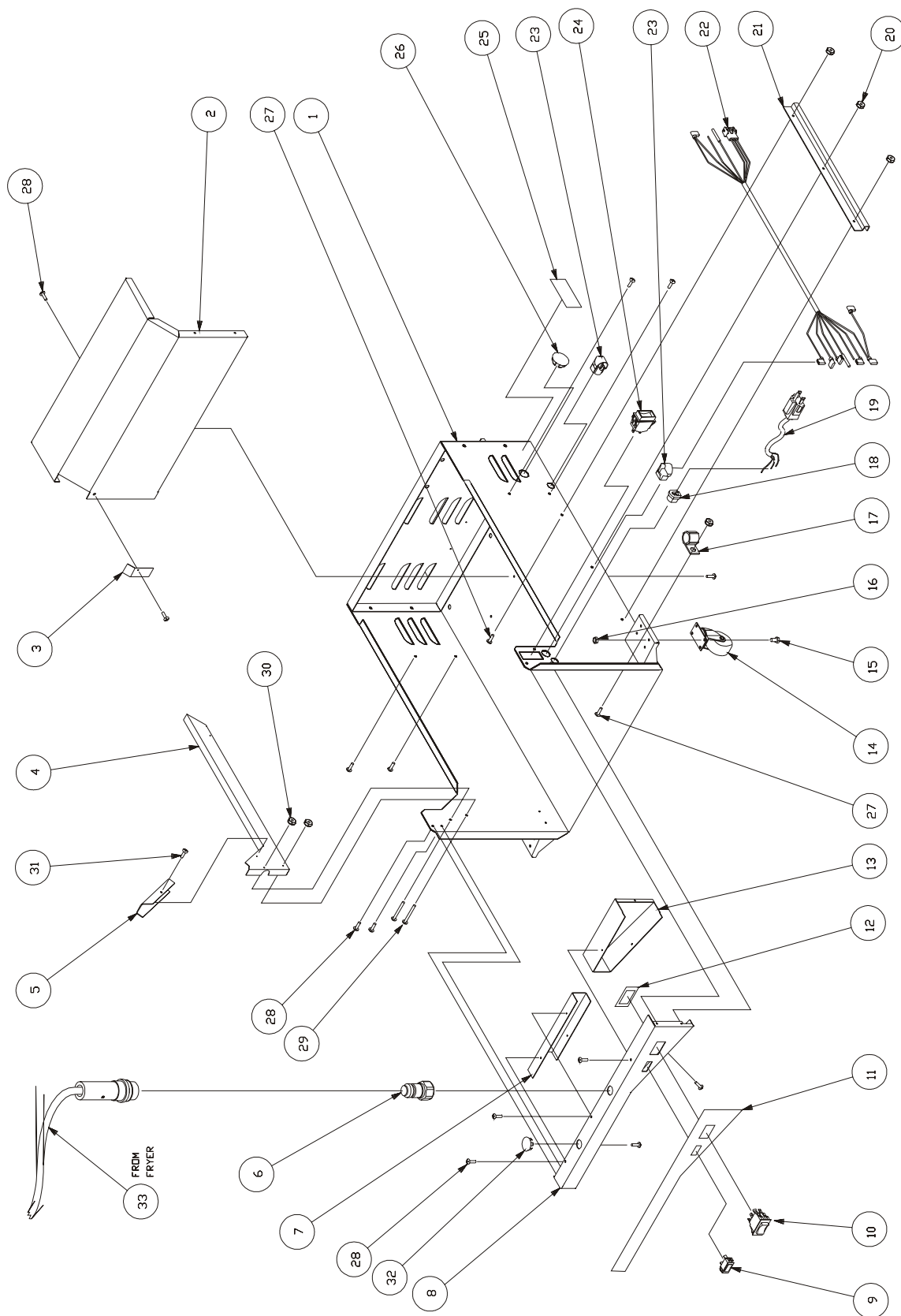


Figure 5-5 UFM Filter, Frame/Electrical Assembly

Table 5-3 UFM Filter, Pick-Up/Pan Assembly

Item Number	Pitco Frialator Part Number	Description	Quantity Per Unit
1	B6621001	Filter Pan, Weldment	1
2	B6620001	Filter, Rack	1
3	B6617001	Filter, Screen Clip	1
4	B6621202	Filter, Catch Crumb, Weldment	1
5	A6056001	Label, Filter Instruction - Pan	1
6	B6621301	Filter, Cover Pan, Weldment	1
7	P6071516	Handle, Door, 3" C to C	1
8	A6681802	Filter, Coupling Top	1
9	B6615301	Filter, Screen Inlet	1
10	PP10409	O-Ring Viton 11/16" x .094" W	1
11	B6621601	Filter, Tube Suction, Weldment	1
12	PP10629	Ring, Retaining - Internal .875"	1
13	A6684601	Filter, Insulation Pick-Up	1
14	P0062100	Screw, 1/4-20 x 3/8" Set	2
15	P0007300	Screw, 8-32 x 1/4" Hex & N 2N	2
16	PP10613	Filter Paper, 18-1/2" x 20-1/2" Heavy Duty	1

Revised 5/28/93

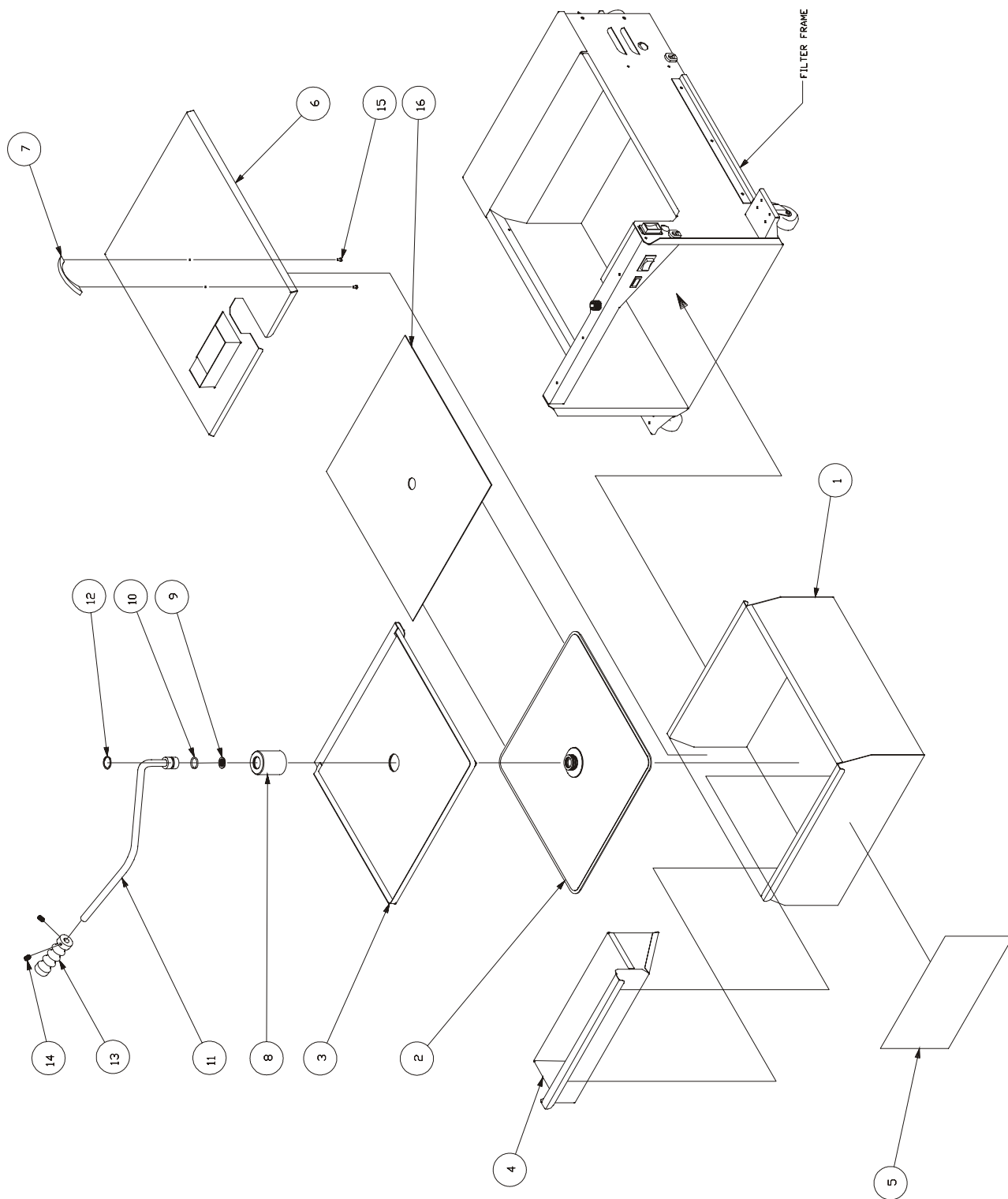


Figure 5-6 UFM Filter, Pick-Up/Pan Assembly

Table 5-4 UFM Filter, Motor / Return Assembly

Item Number	Pitco Frialator Part Number	Description	Quantity Per Unit
1	PP10101	Pump/Motor 1/3 HP, 115/230V, 50/60Hz	1
2	PP10106	Fitting, Elbow Male 90 .50D x .5 NPT	2
3	A6682702	Filter, Tubing Out SS	1
4	PP10731	Fitting, Elbow Male 90 .50D x .375 NPT	1
5	B6621401	Filter, Tubing Pump - Inlet Weldment	1
6	PP10039	Heat Tape, 1/2" x 79" 110V 165 Watt	1
7	PP10111	O-Ring, Viton .50ID x .688 x .094W	2
8	A6685601	Filter, Insulator O-Ring Fitting	1
9	P0062100	Screw, 1/4-20 x 3/8" Set	1
10	B6717701	Wiring, Motor Harness	1
11	PP10739	Thermostat, Snap Disc	1
12	PP10687	Screw, 6-32 x 5/16" TH Phillips ZN	2
13	P009110	Nut, Hex (KEP) 6-32 ZN	2
14	PP10738	Nut, Retaining Clip 5/16" - 18	1
15	P0144000	Nut, Hex 5/16" - 18 SST	2
16	P0115000	Screw, 5/16" - 18 x 3/4" HHC SSBB	3

Revised 5/28/93

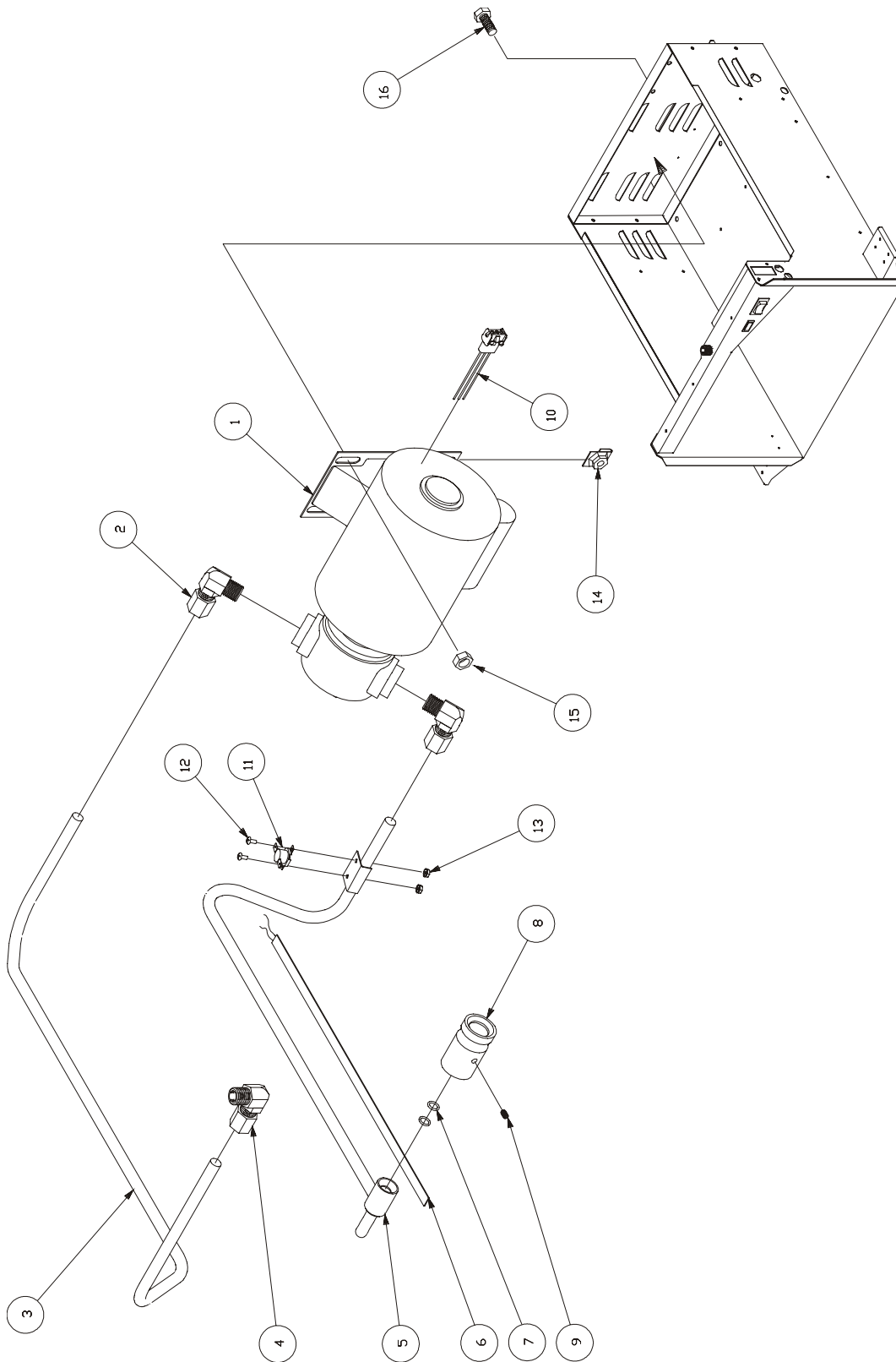


Figure 5-7 UFM Filter, Motor / Return Assembly

Table 5-5 Built-In Filter Pan With Components

Item Number	Pitco Frialator Part Number	Description	Quantity Per Unit
1	B6602001	Pan #14	1
	B6602101	Pan #18	1
2	B6603001	Paper Retainer #14	1
	B6603002	Paper Retainer #18	1
3	B6602401	Hose #14	1
	B6602402	Hose #18	1
4	P6071123	Quick Disconnect, Male	1
5	P7037752-1	Elbow 90° 3/8 Street Plated	1
6	A6641802	Handle #14	2
	A6641804	Handle #18	2
7	P6072611	Paper Support Rack #14	1
	P6072612	Paper Support Rack #18	1
8	P7037316-1	Stand Pipe #14	1
	P7037320-1	Stand Pipe #18	1
9	P7037675	Elbow 90° 3/8 Plated	1

Revised 5/28/93

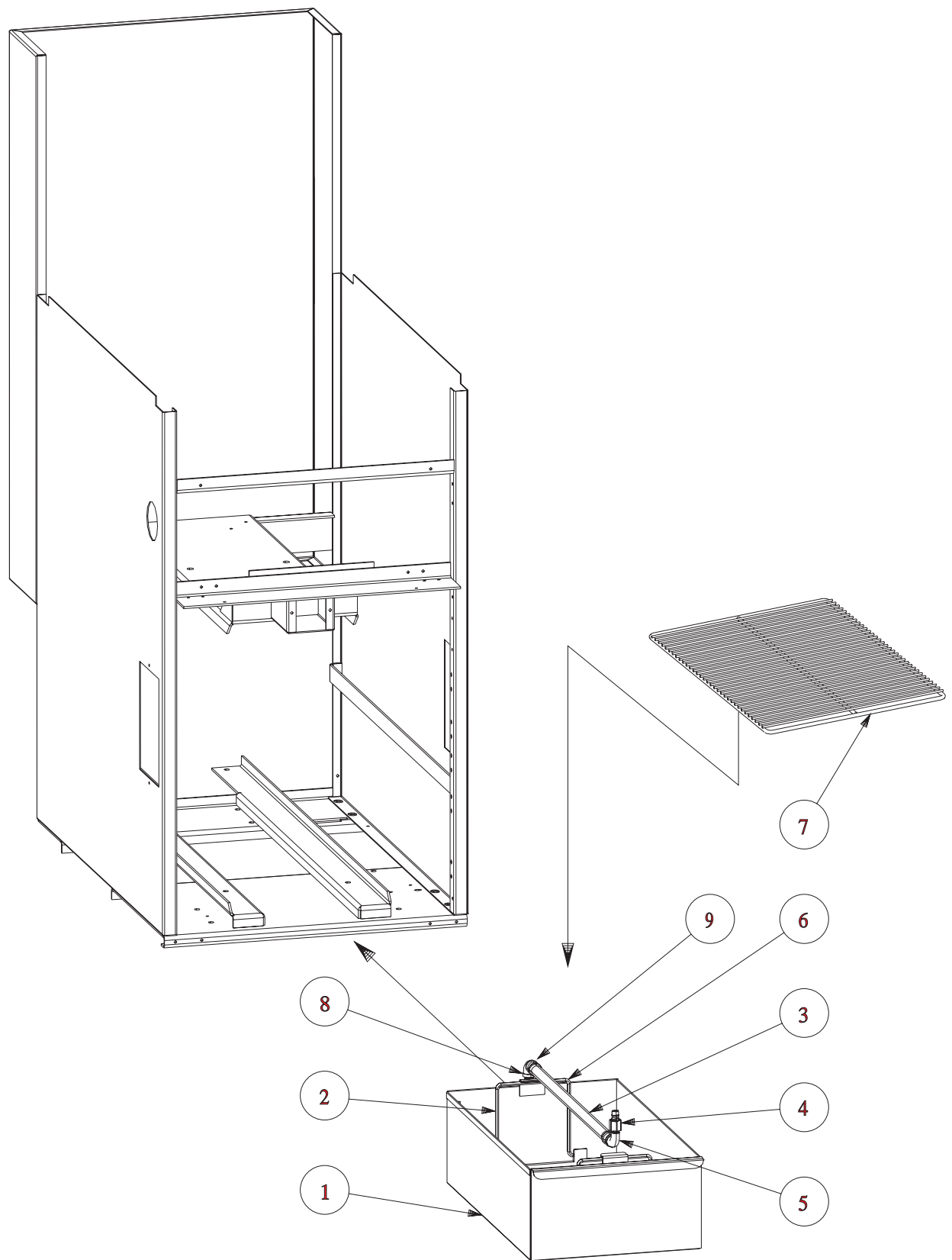


Figure 5-8 Built-In Filter Pan With Components

Table 5-6 Built-In Filter Piping With Components

Item Number	Pitco Frialator Part Number	Description	Quantity Per Unit
1	P5046381	Pump and Motor	1
2	P6071530	Pump Only	1
3	P5046384	Motor Only	1
4	B7402241	Quick Disconnect	1
5	P0020600	Bolt 1/4 - 20 x 5/8"	4
6	P0080650	Washer, Flat	8
7	P0093300	Nut, Keep	4

Revised 5/28/93

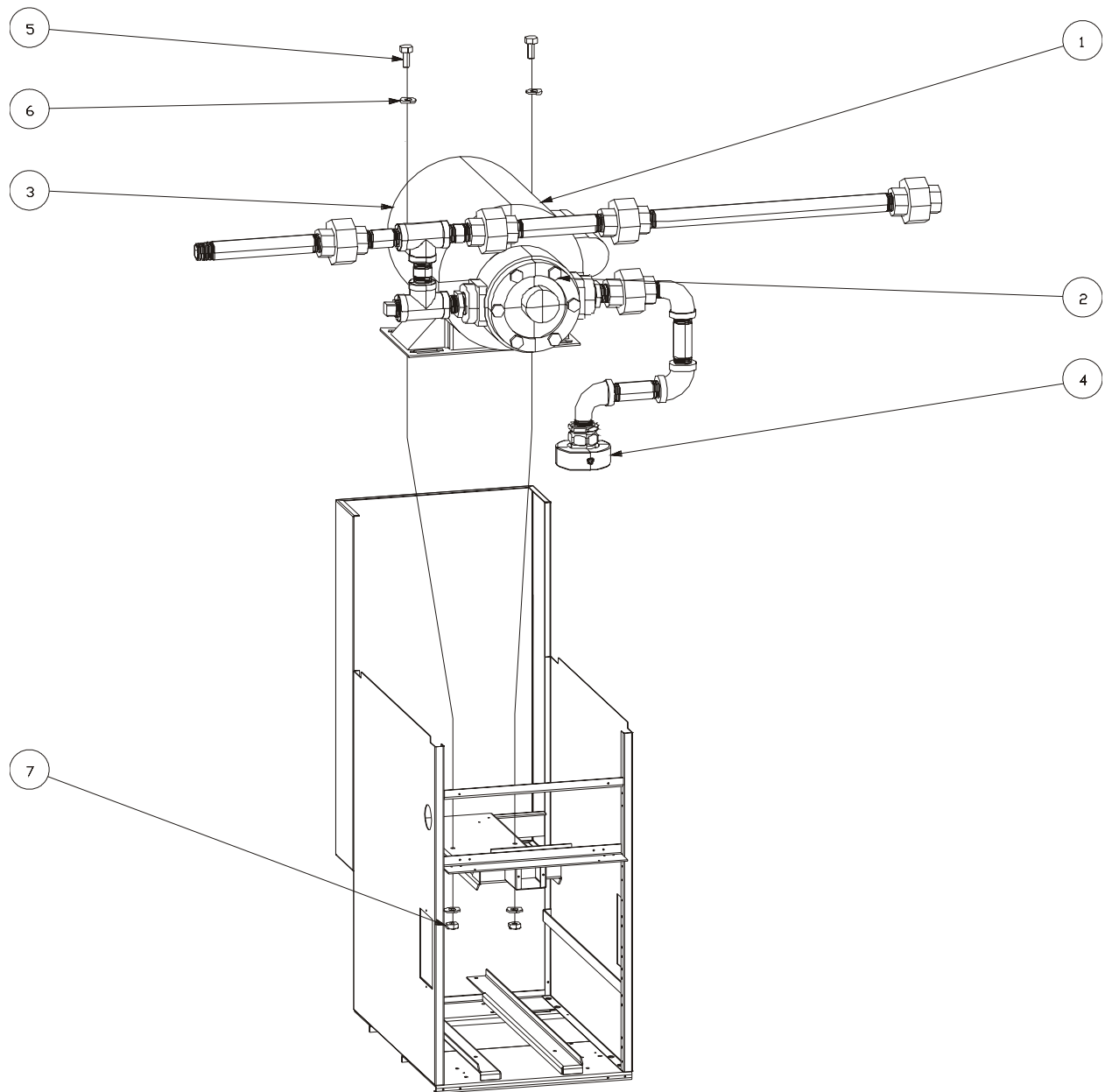


Figure 5-9 Built-In Filter Piping With Components

Table 5-7 Built-In Filter With Accessories

Item Number	Pitco Frialator Part Number	Description	Quantity Per Unit
1	P5044768	Food Warmer, Built-In	1
	P5044760	Food Warmer, Free Standing	1
2	P6072155	Drain Screen #14	1
	P6072156	Drain Screen #18	1
3	A5811202	Pan Liner #14	1
	A5811206	Pan Liner #18	1
4	PP10733	Filter Powder, 120, 8oz Packets	
5	P6071371	Paper #14 Standard	
	PP10612	Paper #14 Heavy Duty	
	P6071373	Paper #18 Standard	
	PP10606	Paper #18 Heavy Duty	
6	A1100802	Basket Hanger #14	1
	A1100804	Basket Hanger #18	1

Revised 5/28/93

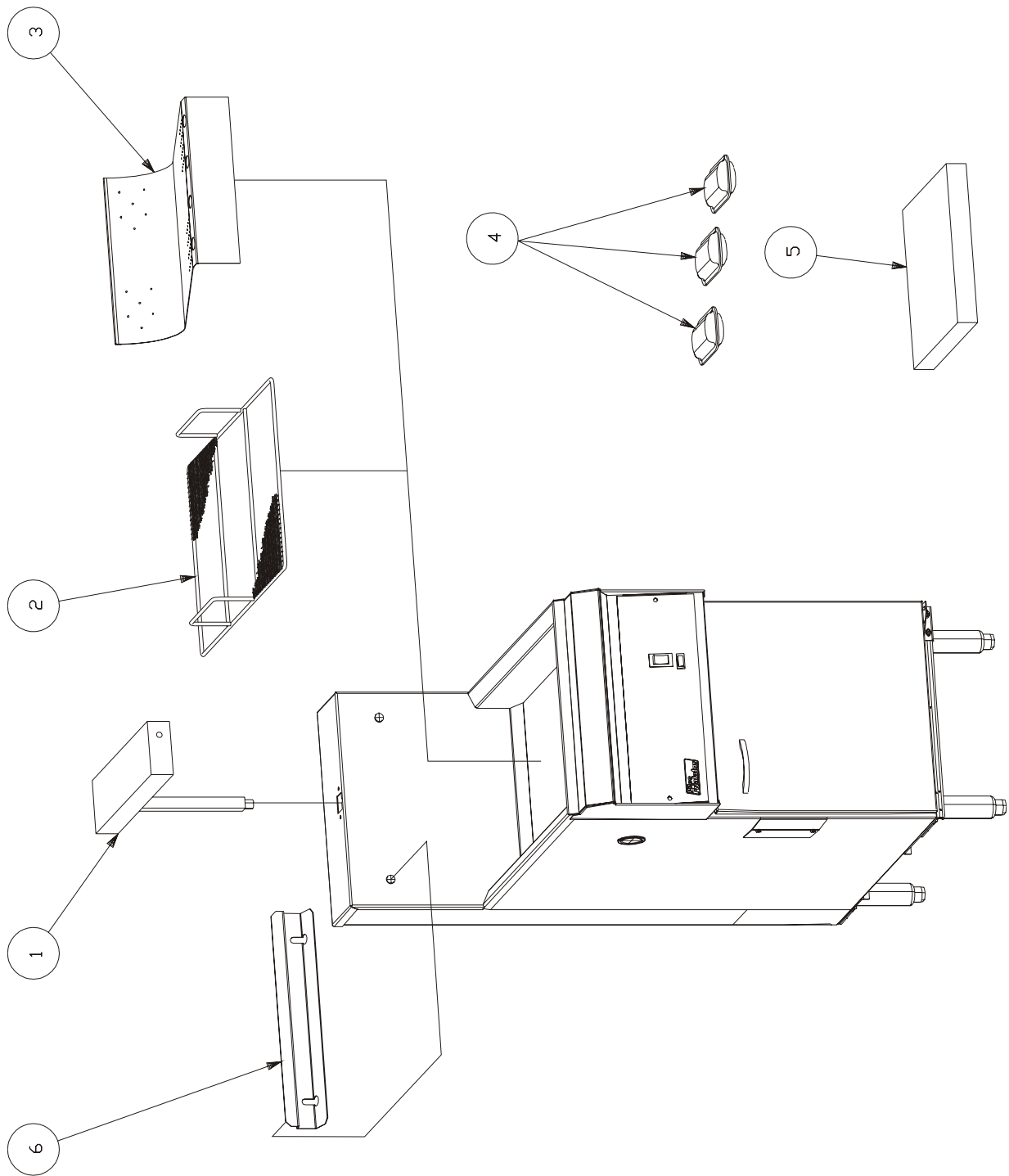


Figure 5-10 Built-In Filter With Accessories

ALPHABETICAL PART LIST

Part Description	Models Used on	Pitco Frialator Part No.
BASKET HANGER, STAINLESS STEEL	E14,E14B	A1100406
BASKET HANGER, STAINLESS STEEL	E18	A1100408
BASKET HANGER, STAINLESS STEEL	E18B	A1101002
CASTER (4/FILTER)	ALL UFM	P6071062
CASTER ASSEMBLY 7" WITH LOCKING DEVICE	ALL UFM	PP10811
CASTER ASSEMBLY 7" WITHOUT LOCKING DEVICE	ALL UFM	PP10810
CASTER WITH LOCK 6"	ALL	PP10809
CASTER WITHOUT LOCK 6"	ALL	PP10808
CHANNEL STRIP #14-2	E14	A1900104
CHANNEL STRIP #18-2	E14	A1900114
CIRCUIT BREAKER, 10 AMP	ALL BIF	PP10104
CIRCUIT BREAKER, 4 AMP, DOUBLE POLE	240V UFM	PP10470
CLAMP, BAND (FILTER)	ALL	PP10034
CLEAN OUT ROD	ALL	A3301001
CLIP, SCREEN	SF50,SF65	B6603601
CONTACTOR, DEFINITE PURPOSE, 40A, 24 V, 3PST-NO	ALL	PP10560
CONTACTOR, MERCURY-40AMP 24 VAC 5PST-NO	ALL	PP10553
CORD, PLUG-RETRACTILE 16-3 SJO	E14,E18UFM	PP10439
COUNTER BALANCE BEARING ASSEMBLY	E14,E14B, E18,E18B	B7361701
COUNTER BALANCE HINGE BRACKET	E14	B7361803
COUNTER BALANCE HINGE BRACKET	E14B,E18	B7361804
COVER SCREWS	ALL	P0101200
CRUMB CATCH	SF50,SF65	B6601802
CRUMB CATCH BASKET	ALL BIF	P6072165
CRUMB CATCH RETAINER	E14 BIF	B6601901
CRUMB CATCH RETAINER	E18 BIF	B6601902
DOOR HANDLE	ALL	P6071516
DOOR MAGNET	ALL	P6071300
DOOR, UNIVERSAL, STAINLESS STEEL OUTSIDE	E14,E14B	B2301205
DOOR, UNIVERSAL, STAINLESS STEEL OUTSIDE	E18,E18B	B2301206
DOOR, UNIVERSAL, STAINLESS STEEL OUTSIDE	E12	B2301204
DRAIN OUTLET NIPPLE, 1-1/4"	E14,E14B, E18	A2502503
DRAIN VALVE	E12	P6071769
DRAIN VALVE, 1-1/2" FULL PORT	E18B	P6071770
DRAIN VALVE, 1-1/4" STANDARD	E14,E14B, E18,E18B	P6071785
ELEMENT HOUSING BOX COVER	E14,E14B	A2603206
ELEMENT HOUSING BOX COVER	E18,E18B	A2603208
ELEMENT RACK	E12	B2800703-1
ELEMENT RACK	E14B,E14	B2800706-1
ELEMENT RACK	E18B	B2800710-1
ELEMENT RACK	E18	B2800708-1

ALPHABETICAL PART LIST (Continued)

Part Description	Models Used on	Pitco Frialator Part No.
ELEMENT RACK	E14X	B2800704-1
ELEMENT WIRES	ALL	SPECIAL ORDER
ENTRANCE BOX COVER	ALL	A2900601
FAT CONTAINER	ALL	SPECIAL ORDER
FEMALE QUICK DISCONNECT (BLACK DONUT)	SF50,SF65	PP10113
FILTER CATCH, CRUMB, WELDMENT	SF50A,SF65A	B6621202
FILTER COVER, PAN, WELDMENT	SF50A	B6621301
FILTER COVER, PAN, WELDMENT	SF65A	B6621302
FILTER ENVELOPE 18" X 20-1/2"	ALL UFM	PP10613
FILTER HOSE UFM EXCEPT RPB	SF50A,SF65A	B6622001
FILTER HOSE UFM FOR RPB	SF50A,SF65A	B6622002
FILTER INSULATION PICK-UP	SF50A,SF65A	A6684601
FILTER INSULATOR TOP	SF50A,SF65A	A6685401
FILTER PAN, WELDMENT	SF50A	B6621001
FILTER PAN, WELDMENT	SF65A	B6621002
FILTER PAPER 13-1/2" X 24"	E7-E14 BIF	P6071371
FILTER PAPER 17-1/2" X 28"	E18-E34 BIF	P6071373
FILTER PAPER, HEAVY DUTY, 13-1/2" X 24"	E7-E14 BIF	PP10612
FILTER PAPER, HEAVY DUTY, 17-1/2" X 28"	E18-E34 BIF	PP10606
FILTER QD SNP 23 NIPPLE	SF50A,SF65A	PP10741
FILTER QUICK DISCONNECT ADAPTER	SF50,SF65	B6603901
FILTER RACK	SF50A,SF65A	B6620001
FILTER RETURN INSULATION DISCONNECT	SF50A,SF65A	B6622801
FILTER SCREEN CLIP	SF50A,SF65A	B6617001
FILTER, TUBE SUCTION, COMPLETE	SF50A,SF65A	B6621701
FUSE 1 AMP SLOW BLOW GLASS	ALL	PP10122
FUSE 40 AMP	E14,E14B,E18	P5045701
FUSE 50 AMP	E18B	P5045702
FUSE HOLDER	ALL	P5045792
GASKET, DRAIN LINE (SLEEVE)	ALL	PP10032
GASKET, DRAIN LINE (SLEEVE)	ALL	PP10032
GROUND CLAMP	ALL	P5045241
HANDLE, VALVE 3/8 BALL, COATED BLUE	ALL	PP10049
HANDLE, VALVE 3/8 BALL, COATED RED	ALL	PP10048
HANDLE, VALVE 3/8 BALL, COATED YELLOW	ALL	PP10050
HEAT TAPE, 1/2" X 79", 110 VAC, 165 W	SF50,SF65	PP10039
HEAT TAPE, 110 VAC, 120 W	SF50,SF65	PP10194
HEATER, SILICONE, 120 VAC, 250 W	SF50,SF65	PP10099
HEATING ELEMENT	E12-208V	P5046923
HEATING ELEMENT	E12-240V	P5046924
HEATING ELEMENT	E12-480V	P5046951
HEATING ELEMENT	E18-480V	P5046900

ALPHABETICAL PART LIST (Continued)

Part Description	Models Used on	Pitco Frialator Part No.
HEATING ELEMENT	E18-208V	P5046901
HEATING ELEMENT	E18-240V	P5046902
HEATING ELEMENT	E18B-208V	P5046903
HEATING ELEMENT	E18B-240V	P5046904
HEATING ELEMENT	E18B-480V	P5046952
HEATING ELEMENT	E14-208V	P5046920
HEATING ELEMENT	E14-240V	P5046921
HEATING ELEMENT	E14-480V	P5046919
HEATING ELEMENT	E14B,E7-208V	P5046915
HEATING ELEMENT	E14B,E7-240V	P5046916
HEATING ELEMENT	E14B,E7-480V	P5046960
HIGH LIMIT BULB CLAMP	ALL	B7370402
HIGH LIMIT CAPILLARY CLAMP	ALL	A1400902
HIGH LIMIT COVER	ALL	B7370101
HIGH LIMIT SWITCH	ALL	P5047216
HINGE, DOOR-BOTTOM LH	ALL	B7230301
HINGE, DOOR-BOTTOM RH	ALL	B7230302
HINGE, DOOR-TOP LH	ALL	B7230201
HINGE, DOOR-TOP, RH	ALL	B7230202
HOSE ASSEMBLY WITH QUICK DISCONNECT	SF50A,SF65A	B6622301
INTERLOCK SWITCH	ALL	P5047170
INTERLOCK SWITCH COVER	ALL	A2601502
KNOB, 200-400 OFF ELECTRIC	ALL	PP10539
LAMP, 125 VAC AMBER RECTANGULAR	ALL UFM	PP10082
LAMP, 125 VAC GREEN RECTANGULAR	SF50A,SF65A	PP10331
LEG, ADJUSTABLE 6"	ALL	B3900909
LEG, ADJUSTABLE 8"	ALL	B7472909
LEG, ADJUSTABLE, 7"	ALL	B3900408
LOCK ARM TIP	ALL	P5045161
MODULE 1 PROD 14/18-184 NAT	E14,E18	P5044851
MODULE 1 PROD 14/18-184 REBUILT	E14,E18	P5044852
MODULE 1 PROD 7-184 NAT	E7	P5044856
MODULE 1 PROD 7-184 REBUILT	E7	P5044857
MODULE 8 PROD 14/18-884 NAT	E14,E18	P5044850
MODULE 8 PROD 14/18-884 REBUILT	E14,E18	P5044854
MODULE 8 PROD 7-884 NAT	E7	P5044855
MODULE 8 PROD 7-884 REBUILT	E7	P5044853
O-RING, VITON .50 ID X .688 X .094W	SF50A, SF65A	PP10111
PICKUP QUICK DISCONNECT, FEMALE, NO/RING	SF50,SF65	P6071122
PICKUP QUICK DISCONNECT, MALE	SF50,SF65	P6071123
PLUG - 9 POLE MALE	ALL	P5045826
PROBE STANDOFF CLAMP	ALL	B7370403
PUMP/MOTOR ASSEMBLY, 115/230 VAC	ALL BIF	P5046381
PUMP/MOTOR ASSEMBLY, 115/230 VAC, 60HZ, 1/3 HP	ALL UFM	PP10101

ALPHABETICAL PART LIST (Continued)

Part Description	Models Used on	Pitco Frialator Part No.
RECEPTACLE, 3 PRONG, 15A, 125VAC	ALL UFM	PP10103
RETURN HOSE NEW STYLE SF50	SF50	B6602803
RETURN HOSE NEW STYLE SF65	SF65	B6602804
SPRING	ALL	P6071636
SQUARE BASKETS, FINE MESH	E12	P6072124
SQUARE BASKETS, FINE MESH	E14,E14B	P6072144
SQUARE BASKETS, FINE MESH	E18	P6072187
SQUARE BASKETS, FINE MESH	E12	P6072124
SQUARE BASKETS, REGULAR MESH	E12	P6072123
SQUARE BASKETS, REGULAR MESH	E14,E14B	P6072143
SQUARE BASKETS, REGULAR MESH	E18	P6072183
SUCTION TUBE	SF50,SF65	B6603801
SUPPORT RACK, TOP	SF50,SF65	B6603701
SWITCH , ROCKER, DPDT (ON-OFF-ON)	SF50,SF65	PP10098
SWITCH, ROCKER CIRCUIT BREAKER SPST, 8A, 125 VAC	SF50A,SF65A	PP10460
SWITCH, ROCKER DPST 15A, WITH BREAKER	SF50A,SF65A	PP10735
TERMINAL BLOCK (TB2)	ALL	P5047305
TERMINAL BLOCK (TB3)	ALL	P5047303
THERMOSTAT KNOB	ALL	P6071270
THERMOSTAT PROBE	E12,E14 ALL	
	E18	P6700602
THERMOSTAT, SNAP DISK	SF50A,SF65A	PP10739
TWIN BASKETS, FINE MESH	E12	P6072126
TWIN BASKETS, FINE MESH	E14,E14B	P6072146
TWIN BASKETS, FINE MESH	E18	P6072188
TWIN BASKETS, REGULAR MESH	E12	P6072125
TWIN BASKETS, REGULAR MESH	E14,E14B	P6072145
TWIN BASKETS, REGULAR MESH	E18	P6072184
VALVE, BALL 3/8" PLTD W/O HANDLE	ALL	P6071780

NUMERICAL PART LIST

Pitco Frialator Part No.	Part Description	Models Used on
A1100406	BASKET HANGER, STAINLESS STEEL	E14,E14B
A1100408	BASKET HANGER, STAINLESS STEEL	E18
A1101002	BASKET HANGER, STAINLESS STEEL	E18B
A1400902	HIGH LIMIT CAPILLARY CLAMP	ALL
A1900104	CHANNEL STRIP #14-2	E14
A1900114	CHANNEL STRIP #18-2	E14
A2502503	DRAIN OUTLET NIPPLE, 1-1/4"	E14,E14B,E18
A2601502	INTERLOCK SWITCH COVER	ALL
A2603206	ELEMENT HOUSING BOX COVER	E14,E14B
A2603208	ELEMENT HOUSING BOX COVER	E18,E18B
A2900601	ENTRANCE BOX COVER	ALL
A3301001	CLEAN OUT ROD	ALL
A6684601	FILTER INSULATION PICK-UP	SF50A,SF65A
A6685401	FILTER INSULATOR TOP	SF50A,SF65A
B2301204	DOOR, UNIVERSAL, STAINLESS STEEL OUTSIDE	E12
B2301205	DOOR, UNIVERSAL, STAINLESS STEEL OUTSIDE	E14,E14B
B2301206	DOOR, UNIVERSAL, STAINLESS STEEL OUTSIDE	E18,E18B
B2800703-1	ELEMENT RACK	E12
B2800704-1	ELEMENT RACK	E14X
B2800706-1	ELEMENT RACK	E14B,E14
B2800708-1	ELEMENT RACK	E18
B2800710-1	ELEMENT RACK	E18B
B3900408	LEG, ADJUSTABLE, 7"	ALL
B3900909	LEG, ADJUSTABLE 6"	ALL
B6601802	CRUMB CATCH	SF50,SF65
B6601901	CRUMB CATCH RETAINER	E14 BIF
B6601902	CRUMB CATCH RETAINER	E18 BIF
B6602803	RETURN HOSE NEW STYLE SF50	SF50
B6602804	RETURN HOSE NEW STYLE SF65	SF65
B6603601	CLIP, SCREEN	SF50,SF65
B6603701	SUPPORT RACK, TOP	SF50,SF65
B6603801	SUCTION TUBE	SF50,SF65
B6603901	FILTER QUICK DISCONNECT ADAPTER	SF50,SF65
B6617001	FILTER SCREEN CLIP	SF50A,SF65A
B6620001	FILTER RACK	SF50A,SF65A
B6621001	FILTER PAN, WELDMENT	SF50A
B6621002	FILTER PAN, WELDMENT	SF65A
B6621202	FILTER CATCH, CRUMB, WELDMENT	SF50A,SF65A
B6621301	FILTER COVER, PAN, WELDMENT	SF50A
B6621302	FILTER COVER, PAN, WELDMENT	SF65A
B6621701	FILTER, TUBE SUCTION, COMPLETE	SF50A,SF65A
B6622001	FILTER HOSE UFM EXCEPT RPB	SF50A,SF65A
B6622002	FILTER HOSE UFM FOR RPB	SF50A,SF65A

NUMERICAL PART LIST (Continued)

Pitco Frialator Part No.	Part Description	Models Used on
B6622301	HOSE ASSEMBLY WITH QUICK DISCONNECT	SF50A,SF65A
B6622801	FILTER RETURN INSULATION DISCONNECT	SF50A,SF65A
B7230201	HINGE, DOOR-TOP LH	ALL
B7230202	HINGE, DOOR-TOP, RH	ALL
B7230301	HINGE, DOOR-BOTTOM LH	ALL
B7230302	HINGE, DOOR-BOTTOM RH	ALL
B7361701	COUNTER BALANCE BEARING ASSEMBLY	E14,E14B, E18,E18B
B7361803	COUNTER BALANCE HINGE BRACKET	E14
B7361804	COUNTER BALANCE HINGE BRACKET	E14B,E18
B7370101	HIGH LIMIT COVER	ALL
B7370402	HIGH LIMIT BULB CLAMP	ALL
B7370403	PROBE STANDOFF CLAMP	ALL
B7472909	LEG, ADJUSTABLE 8"	ALL
P0101200	COVER SCREWS	ALL
P5044850	MODULE 8 PROD 14/18-884 NAT	E14,E18
P5044851	MODULE 1 PROD 14/18-184 NAT	E14,E18
P5044852	MODULE 1 PROD 14/18-184 REBUILT	E14,E18
P5044853	MODULE 8 PROD 7-884 REBUILT	E7
P5044854	MODULE 8 PROD 14/18-884 REBUILT	14,18
P5044855	MODULE 8 PROD 7-884 NAT	E7
P5044856	MODULE 1 PROD 7-184 NAT	E7
P5044857	MODULE 1 PROD 7-184 REBUILT	E7
P5045161	LOCK ARM TIP	ALL
P5045241	GROUND CLAMP	ALL
P5045701	FUSE 40 AMP	E14,E14B,E18
P5045702	FUSE 50 AMP	E18B
P5045792	FUSE HOLDER	ALL
P5045826	PLUG - 9 POLE MALE	ALL
P5046381	PUMP/MOTOR ASSEMBLY, 115/230 VAC	ALL BIF
P5046900	HEATING ELEMENT	E18-480V
P5046901	HEATING ELEMENT	E18-208V
P5046902	HEATING ELEMENT	E18-240V
P5046903	HEATING ELEMENT	E18B-208V
P5046904	HEATING ELEMENT	E18B-240V
P5046915	HEATING ELEMENT	E14B,E7-208V
P5046916	HEATING ELEMENT	E14B,E7-240V
P5046919	HEATING ELEMENT	E14-480V
P5046920	HEATING ELEMENT	E14-208V
P5046921	HEATING ELEMENT	E14-240V
P5046923	HEATING ELEMENT	E12-208V
P5046924	HEATING ELEMENT	E12-240V
P5046951	HEATING ELEMENT	E12-480V
P5046952	HEATING ELEMENT	E18B-480V

NUMERICAL PART LIST (Continued)

Pitco Frialator Part No.	Part Description	Models Used on
P5046960	HEATING ELEMENT	E14B,E7-480V
P5047170	INTERLOCK SWITCH	ALL
P5047216	HIGH LIMIT SWITCH	ALL
P5047303	TERMINAL BLOCK (TB3)	ALL
P5047305	TERMINAL BLOCK (TB2)	ALL
P6071062	CASTER (4/FILTER)	ALL UFM
P6071122	PICKUP QUICK DISCONNECT, FEMALE, NO/RING	SF50,SF65
P6071123	PICKUP QUICK DISCONNECT, MALE	SF50,SF65
P6071270	THERMOSTAT KNOB	ALL
P6071300	DOOR MAGNET	ALL
P6071371	FILTER PAPER 13-1/2" X 24"	E7-E14 BIF
P6071373	FILTER PAPER 17-1/2" X 28"	E18-E34 BIF
P6071516	DOOR HANDLE	ALL
P6071636	SPRING	ALL
P6071769	DRAIN VALVE	E12
P6071770	DRAIN VALVE, 1-1/2" FULL PORT	E18B
P6071780	VALVE, BALL 3/8" PLTD W/O HANDLE	ALL
P6071785	DRAIN VALVE, 1-1/4" STANDARD	E14,E14B, E18,E18B
P6072123	SQUARE BASKETS, REGULAR MESH	E12
P6072124	SQUARE BASKETS, FINE MESH	E12
P6072124	SQUARE BASKETS, FINE MESH	E12
P6072125	TWIN BASKETS, REGULAR MESH	E12
P6072126	TWIN BASKETS, FINE MESH	E12
P6072143	SQUARE BASKETS, REGULAR MESH	E14,E14B
P6072144	SQUARE BASKETS, FINE MESH	E14,E14B
P6072145	TWIN BASKETS, REGULAR MESH	E14,E14B
P6072146	TWIN BASKETS, FINE MESH	E14,E14B
P6072165	CRUMB CATCH BASKET	ALL BIF
P6072183	SQUARE BASKETS, REGULAR MESH	E18
P6072184	TWIN BASKETS, REGULAR MESH	E18
P6072187	SQUARE BASKETS, FINE MESH	E18
P6072188	TWIN BASKETS, FINE MESH	E18
P6700602	THERMOSTAT PROBE	E12,E14 ALL,E18
PP10032	GASKET, DRAIN LINE (SLEEVE)	ALL
PP10032	GASKET, DRAIN LINE (SLEEVE)	ALL
PP10034	CLAMP, BAND (FILTER)	ALL
PP10039	HEAT TAPE, 1/2" X 79", 110 VAC, 165 W	SF50,SF65
PP10048	HANDLE, VALVE 3/8 BALL, COATED RED	ALL
PP10049	HANDLE, VALVE 3/8 BALL, COATED BLUE	ALL
PP10050	HANDLE, VALVE 3/8 BALL, COATED YELLOW	ALL
PP10082	LAMP, 125 VAC AMBER RECTANGULAR	ALL UFM
PP10098	SWITCH , ROCKER, DPDT (ON-OFF-ON)	SF50,SF65

NUMERICAL PART LIST (Continued)

Pitco Frialator Part No.	Part Description	Models Used on
PP10099	HEATER, SILICONE, 120 VAC, 250 W	SF50,SF65
PP10101	PUMP/MOTOR ASSEMBLY, 115/230 VAC, 60HZ, 1/3 HP	ALL UFM
PP10103	RECEPTACLE, 3 PRONG, 15A, 125VAC	ALL UFM
PP10104	CIRCUIT BREAKER, 10 AMP	ALL BIF
PP10111	O-RING, VITON .50 ID X .688 X .094W	SF50A, SF65A
PP10113	FEMALE QUICK DISCONNECT (BLACK DONUT)	SF50,SF65
PP10122	FUSE 1 AMP SLOW BLOW GLASS	ALL
PP10194	HEAT TAPE, 110 VAC, 120 W	SF50,SF65
PP10331	LAMP, 125 VAC GREEN RECTANGULAR	SF50A,SF65A
PP10439	CORD, PLUG-RETRACTILE 16-3 SJO	14,18UFM
PP10460	SWITCH, ROCKER CIRCUIT BREAKER SPST, 8A, 125 VAC	SF50A,SF65A
PP10470	CIRCUIT BREAKER, 4 AMP, DOUBLE POLE	240V UFM
PP10539	KNOB, 200-400 OFF ELECTRIC	ALL
PP10553	CONTACTOR, MERCURY-40AMP 24 VAC 5PST-NO	ALL
PP10560	CONTACTOR, DEFINITE PURPOSE 40AMP 24 VAC 3PST-NO	ALL
PP10606	FILTER PAPER, HEAVY DUTY, 17-1/2" X 28"	E18-E34 BIF
PP10612	FILTER PAPER, HEAVY DUTY, 13-1/2" X 24"	E7-E14 BIF
PP10613	FILTER ENVELOPE 18" X 20-1/2"	ALL UFM
PP10735	SWITCH, ROCKER DPST 15A, WITH BREAKER	SF50A,SF65A
PP10739	THERMOSTAT, SNAP DISK	SF50A,SF65A
PP10741	FILTER QD SNP 23 NIPPLE	SF50A,SF65A
PP10808	CASTER WITHOUT LOCK 6"	ALL
PP10809	CASTER WITH LOCK 6"	ALL
PP10810	CASTER ASSEMBLY 7" WITHOUT LOCKING DEVICE	ALL UFM
PP10811	CASTER ASSEMBLY 7" WITH LOCKING DEVICE	ALL UFM
SPECIAL ORDER	ELEMENT WIRES	ALL
SPECIAL ORDER	FAT CONTAINER	ALL

In the event of problems with or questions about your order, please contact the Pitco Frialator factory from 8:00 a.m. - 5:00 p.m., Eastern Standard Time, Monday through Friday:

(603)225-6684 World Wide

In the event of problems with or questions about your equipment, please contact the Pitco Frialator Authorized Service and Parts representative (ASAP) covering your area, through the National Service Network at: (603)-225-6684 24 hours