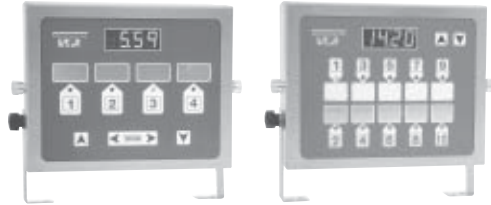


Operation Manual

Single-display 4-Channel and 10-Channel Timers 755-HS4 and 755-HS10

Product Identification



The Prince Castle Model 755 Series Single-display 4-Channel Timer and 10-Channel Timer are easy-to-use timers that count down in minutes and seconds, or hours and minutes. Each channel has its own display and can be programmed independently. Slide in replaceable menu strips identify the product being timed on each channel, and are replaceable as restaurant menus change. Both auditory and visual signals are used to alert busy staff people when a timing function is completed.

LIMITED WARRANTY

This product is warranted to be free from defects in material and/or workmanship for a period of 1 year from date of original installation, not to exceed 18 months from the date of manufacture.

Any component which proves to be faulty in material and/or workmanship will be replaced or repaired (at the option of Prince Castle, Inc.) without cost to the customer for parts and labor. This equipment is portable; charges for on-location service (e.g., trip charges, mileage) are not included in the provisions of this warranty.

This warranty is subject to the following exceptions/conditions:

- Use of any non-genuine Prince Castle parts voids this warranty.
- All labor to be performed during regular work hours. Overtime premium (the incremental amount) will be charged to the customer.
- Damage caused by carelessness, neglect and/or abuse (e.g., dropping, tampering or altering parts, equipment damaged in shipment, by fire, flood or an act of God) is not covered under this warranty.
- All problems due to operation at voltages other than that specified on equipment nameplates are not covered by this warranty. Conversion to correct voltage is the customer's responsibility.
- This equipment must be serviced by Prince Castle Authorized Service Agency or a Prince Castle Service Technician during the warranty period.



355 East Kehoe Blvd. Carol Stream, IL 60188
Phone: 630-462-8800 Toll Free: 1-800-PCASTLE Fax: 630-462-1460 www.princecastle.com

LIMITED WARRANTY (cont.)

The power cord on this product is rated for a maximum surface temperature of 194°F (90°C). If the cord comes into contact with the fryer or rethermalizer or any other heated surface, it may be damaged and/or cause damage to the product and/or injury to the user. The power cord may also be damaged if placed directly in the path of the high temperature exhaust emitting from the flue of the fryer or rethermalizer. Damage resulting from any such misuse may result in a voided Warranty at the sole discretion of the manufacturer.

TABLE OF CONTENTS

Product Identification	1
Safety Information	1
Important	1
Installation	1
Cleaning	1
Operation	2
Channel Defaults	2
Programming	3



Safety Information

⚠ WARNING: Indicates information important to the proper operation of the unit. Failure to observe may result in damage to the equipment and/or severe bodily injury or death.

⚠ CAUTION: Indicates information important to the operation of the unit. Failure to observe may result in equipment damage.

Important!

Prince Castle reserves the right to change specifications and product design without notice. Such revisions do not entitle the buyer to corresponding changes, improvements, additions or replacements for previously purchased equipment.

Installation

Remove the unit from the carton and inspect for signs of damage. If there is damage to the unit:

- Notify the freight carrier (e.g. UPS) within 24 hours,
- Save carton and packaging materials for inspection purposes,
- Contact your local dealer, or if purchased directly, the Prince Castle Sales Department at 1-800-722-7853 or 630-462-8800 to arrange for a replacement unit.

NOTE: When installing this unit, the ambient temperature at the mounting site should not exceed 100°F (37.8°C).



All electrical connections must be in accordance with local electrical codes and any other applicable codes. Plug the unit into an applicable electrical receptacle.

Cleaning

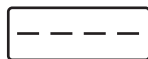
Use **ONLY** a clean damp cloth, wipe the face and other surfaces on the Model 755 Series Timer, as necessary. If desired, a mild soap may also be used.

NEVER use chemicals and/or degreaser of any kind! Long term use of certain chemicals has a negative effect on the surface of the timer, making it brittle and easily damaged.

Operation

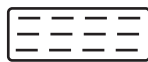
Display

- Individual bi-colored LED for each channel. When activated, the LED for each channel turns green for the length of the entire timing cycle. When the timing cycle ends, the LED will flash red. When multiple timers are running, the timer with the least time remaining will blink its LED.
- One 4-digit, 7-segment numeric display is used.
- Each channel can be programmed for two different timing cycles. These are indicated by the display in the idle state as follows:



(Menu 1)

or



(Menu 2)

- When multiple channels are running, the display will show the time countdown for the channel with the least time remaining. To temporarily view the remaining time of a channel not being displayed, press and hold the channel button.
- If the time is in Hours-Minutes (H:M) the colon in the middle of the 4-digits will flash. If the time is in Minutes-Seconds (M:S) the colon in the middle of the 4-digits will be on continuously.
- At the conclusion of a timing cycle the display flashes "0".

Each of the channels of the 4-Channel or 10-Channel timers operate in an identical manner.

Press a channel button to activate a timing cycle (a short beep sounds). The timers can be programmed to count up to a selected value or count down to 0:00.

NOTE: To cancel any operation in progress, press the related channel button three times in quick succession (less than three seconds). The channel LED turns off and the LED of the next channel with the lowest countdown remaining will blink.

When the count reaches the programmed time value an alarm sounds (if enabled).

Two different timing cycles can be setup for each channel. These are called "Menu 1" and "Menu 2". To change from one menu to the other, all channels must be idle. Simultaneously press both the UP and DOWN buttons for 6 seconds. The display will change between the single-line display (Menu 1) and the three-line display (Menu 2).

Channel Defaults

Scan Function

On models featuring a scan function, the scan button will sequentially display each active channel's time remaining. Press and hold the left scan button to sequence right to left through each channel. Press and hold the right scan button to sequence left to right through all the channels. The flashing channel LED indicates which channel is displayed.

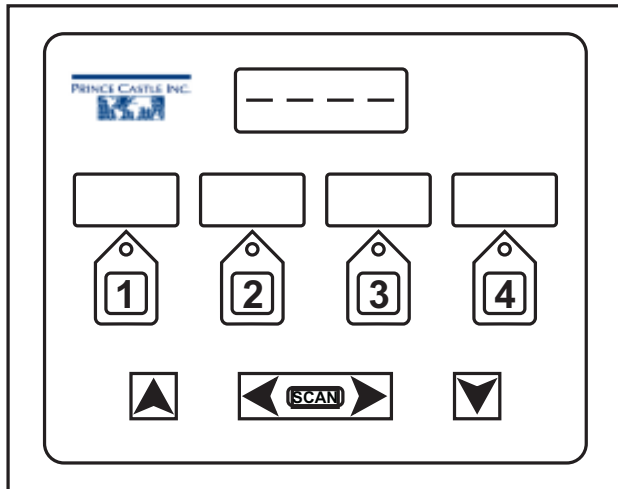
	HS10		HS4	
	Menu 1	Menu 2	Menu 1	Menu 2
	Cycle Time	Cycle Time	Cycle Time	Cycle Time
Channel 1	15:00	15:00	04:00	04:00
Channel 2	15:00	15:00	04:00	04:00
Channel 3	15:00	15:00	06:00	06:00
Channel 4	15:00	15:00	06:00	06:00
Channel 5	15:00	15:00		
Channel 6	15:00	15:00		
Channel 7	15:00	15:00		
Channel 8	15:00	15:00		
Channel 9	30:00	30:00		
Channel 10	30:00	30:00		

Bold italic times are in Hours:Minutes. All other times are in Minutes:Seconds

Programming

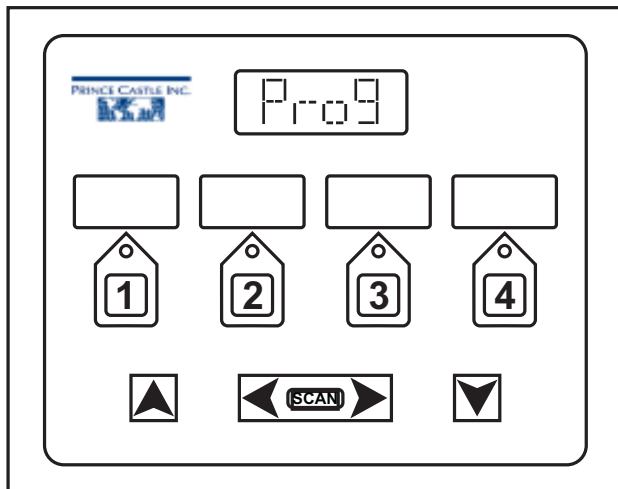
Timer Programming

To program the timer, all four or ten timing channels must be idle with the display showing either one or three sets of four dashes and all LED's turned off. A single set is shown to program Menu 1 and three sets are shown to program Menu 2.



Entering Programming Mode

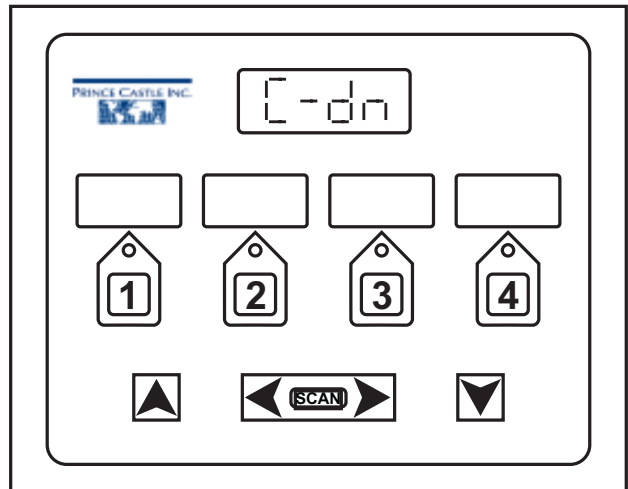
Press and hold the Prince Castle logo button for 6-8 seconds to enter the Programming Mode. The display changes to "Prog".



Countdown Mode

NOTE: This mode can only be entered when all channels are idle. Enter the Countdown Mode by holding the UP button for 6 seconds. This will determine if all the timing cycles count up from 0:00 or count down to 0:00. Use the UP or DOWN buttons to toggle between count up or count down. The display will indicate "C-up" or "C-dn". When the desired mode is obtained, momentarily press any channel button to save and return to Timing Mode.

NOTE: To return to Timing Mode without saving, momentarily press the Prince Castle logo button.

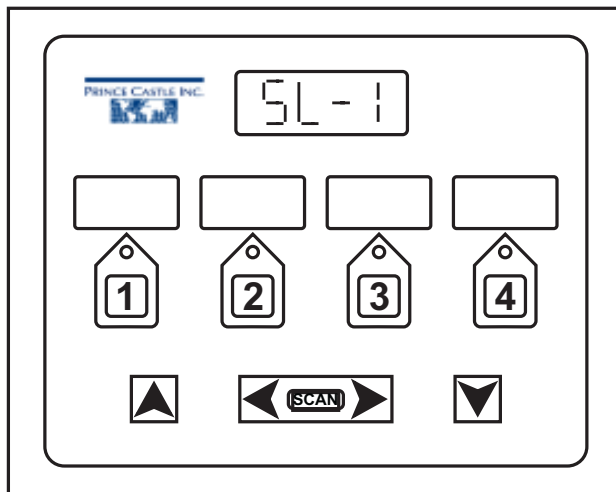


Programming

Volume Level Selection

NOTE: This mode can only be entered when all channels are idle. Press and hold the DOWN button for 6 seconds to initiate the Volume Level Setup Mode. In this mode the timer's audio volume can be set to one of three different levels by using the UP and DOWN buttons. A display will sequence through "SL-1, SL-2, SL-3". When the desired level is obtained, momentarily press any channel button to save the setting and return to the Timing Mode.

NOTE: To return to Timing Mode without saving, momentarily press the Prince Castle logo button.



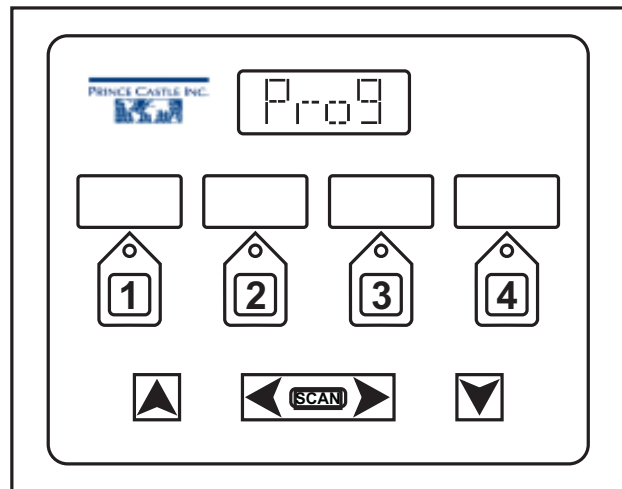
Restoring Factory Presets

Simultaneously pressing both the UP button, DOWN button and the Prince Castle logo button during the first 6 seconds after applying power to the timer will reset all channels back to their factory default settings.

Individual Channel Programming

NOTE: This mode can only be entered when all channels are idle. Pressing and holding the Prince Castle logo button for 6 seconds will transfer the unit into Programming Mode.

When Programming Mode is first entered, the display will show "Prog" until a channel is selected.



Momentarily pressing a channel's button enables timing value programming for that channel. The channel's current value will be displayed. Also, the selected channel's LED will blink yellow to identify which channel is being changed.

Use the UP and DOWN buttons to modify the timing value. Pressing the UP button will increment the timing value and pressing the DOWN button will decrement the timing value. Each time the UP or DOWN button is pressed the timing value increments or decrements by one count.

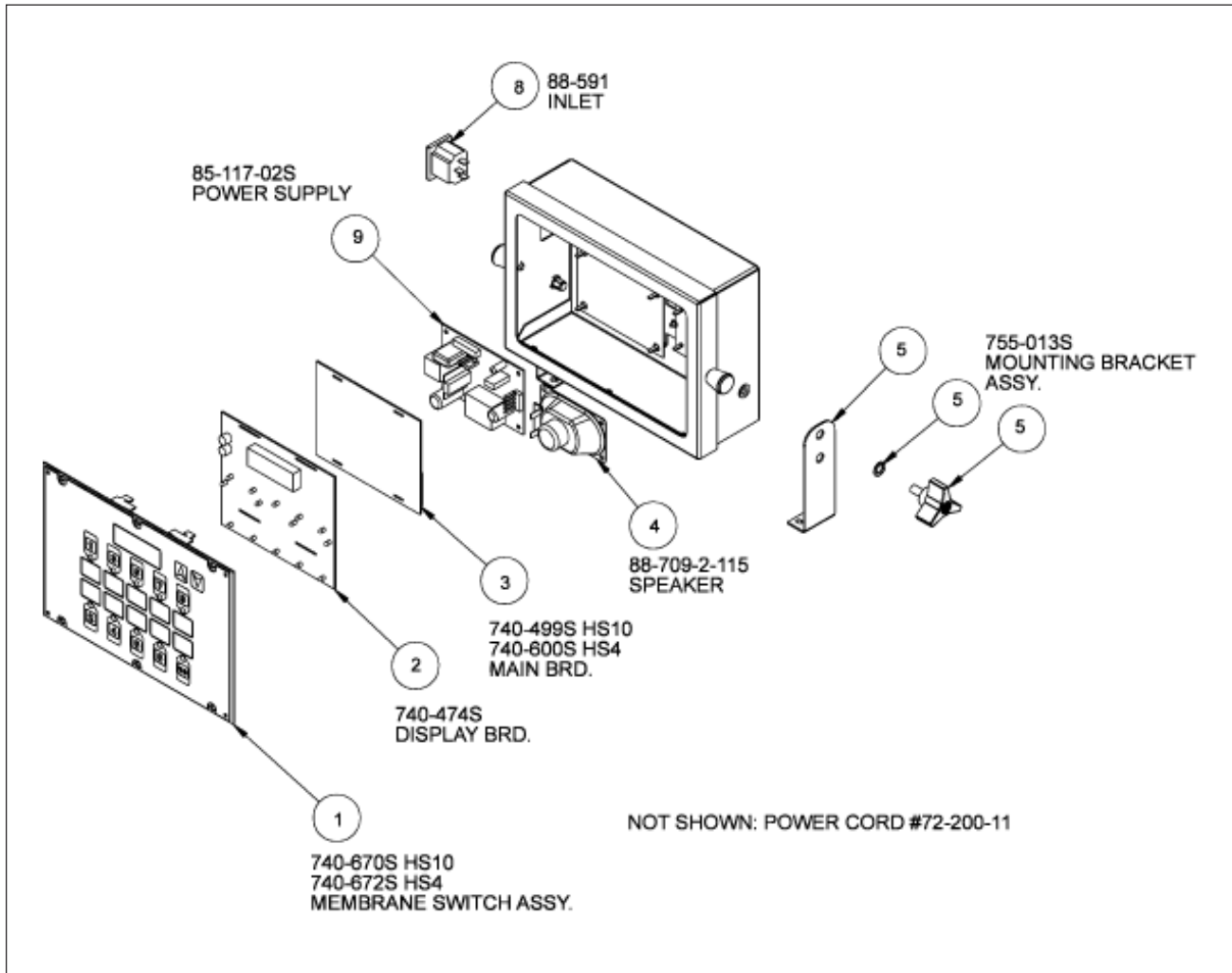
NOTE: If either button is pressed and held, the timing value begins to increment or decrement automatically with the change rate increasing the longer the button is held.

When the desired timing value has been programmed, press the channel button being changed to save the new setting and return to Programming Mode.

NOTE: To return to Timing Mode without saving, momentarily press the Prince Castle logo button.

When changes for all channels have been completed, press the Prince Castle logo button to exit Programming Mode and return the unit to an operationally ready, idle state.

Exploded View



Single-display 4-Channel and 10-Channel Timers
755-HS4 and 755-HS10

