

Operation Manual



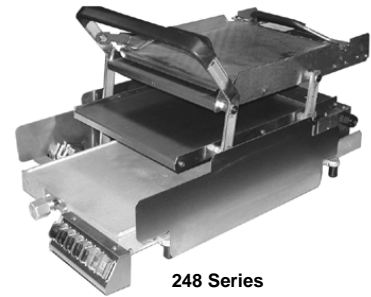
Toaster Grills
Models 247 & 248

Product Identification

The Prince Castle 247 & 248 Toaster Grill Series offers two practical options for quick-and-easy bread product toasting. Both models have pivoting sides allowing for easy access to the platens for cleaning. The 248 Model has the added feature of a Club sandwich level.



247 Series



248 Series

LIMITED WARRANTY

This product is warranted to be free from defects in material and/or workmanship for a period of two (2) years from date of original installation, not to exceed 30 months from date of shipment from our factory. This warranty covers on location service for 2 years (i.e. trip charges and/or mileage). Travel mileage is limited to 100 miles (200 kilometers) round trip (one trip per warranty) from an authorized service agency or its sub-service agency. Any component which proves to be faulty in material and/or workmanship will be replaced or repaired (at the option of Prince Castle, Inc.) without cost to the customer for parts or labor.

This warranty is subject to the following exceptions/conditions:

- Use of any non-genuine Prince Castle parts voids this warranty.
- All labor shall be performed during regular work hours. Overtime premium will be charged to the buyer.
- Damage caused by carelessness, neglect, and/or abuse (e.g., dropping, tampering or altering parts, equipment damaged in shipment, by fire, flood or an act of God) is not covered under this warranty.
- The power cord on this product is rated for a maximum surface temperature of 194°F (90°C). If the cord comes into contact with any heated surface, it may be damaged and/or cause damage to the product and/or injury to the user. Damage resulting from any such misuse may result in a voided Warranty at the sole discretion of the manufacturer.



PRINCE CASTLE INC. 
WORLDWIDE

355 East Kehoe Blvd. • Carol Stream, IL 60188 USA
Telephone: 630-462-8800 • Toll Free: 1-800-PCASTLE
Fax: 630-462-1460 • www.princecastle.com

Table of Contents

Product Identification	1
Safety Information	2
Accessories	2
Installation	3
Setting the Controls	3
View/Change Set Temperature	5
View/Change Set Toasting Time	6
View/Change Duty Time Alarm	8
Standby (Energy Saving) Mode	8
View/Calibrate Platen Temperature	9
Change Product Name (Product Mode Only)	11
Set Volume Levels (All Models)	11
Adjusting Bun Crush Settings	12
Adjusting for Bun Thickness	12
Conditioning the Platens	13
Cleaning	14
Troubleshooting Guide	15
Ordering Parts and Service	16
Model 247 Exploded View	17
Model 248 Exploded View	18
Model 247 Wiring Diagram	19
Model 248 Wiring Diagram	20
Maintenance Card	21

Safety Information

 **WARNING**

Indicates information important to the proper operation of the unit. Failure to observe may result in damage to the equipment and/or severe bodily injury or death.

 **CAUTION**

Indicates information important to the operation of the unit. Failure to observe may result in damage to the equipment.

Accessories

Use standard full-size spatulas with the 247 or 248 Toaster Grills. Also, use the full-size plastic or metal trays under the bottom Platen. You may also use the new nine-bun trays as they become available.

Important!

Prince Castle reserves the right to change specifications and product design without notice. Such revisions do not entitle the buyer to corresponding changes, improvements, additions or replacements for previously purchased equipment.

Installation

Remove the unit from the carton and inspect for signs of damage. If there is damage to the unit:

- Notify the carrier within 24 hours of delivery.
- Save carton and packaging materials for inspection purposes.
- Contact your local dealer, or if purchased directly, the Prince Castle Sales Department at 1-800-722-7853 or 630-462-8800 to arrange for a replacement unit.

Before first use, clean and condition the platens (see Conditioning Platens).

NOTE: When using this unit, the ambient temperature at the mounting site should not exceed 43°C (110°F).



CAUTION

All electrical connections must be in accordance with local electrical codes and any other applicable codes.

Plug the unit into an applicable electrical receptacle.

Setting the Controls

The model 247 & 248 Toaster Grills provide two modes of operation: **DEDICATED MODE** and **PRODUCT MODE**.

- **DEDICATED MODE** is a simple mode of operation for toasting buns that is similar to the 213, 411 & 416 Series Toaster Grills, with a set toast time and temperature for one product "BUN1".
- **PRODUCT MODE** allows you to set both the toasting time and temperature individually for four additional products. Note that it may take several minutes for the platen to heat up or cool down to a new temperature setting. You can also change the display to any four character name of your choice for each of the products to indicate which product is being toasted.
- Furthermore, 247 and 248 Toaster Grills allow you to manually initiate the power-saving mode. (See **Figure 1**.)

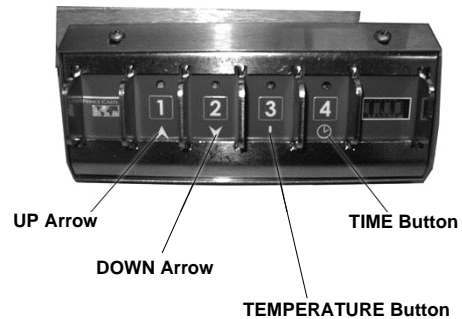


Figure 1

- 1 When the Toaster Grill is in **Dedicated Mode**:
Press and release both the **UP** and **DOWN** arrows at the same time. This will change the Toaster Grill to Product Mode. Products 1 through 4 will be available.

- 2 When the Toaster Grill is in **Product Mode**:
Press and release both the **UP** and **DOWN** arrows at the same time. This will change the Toaster Grill to Dedicated Mode. BUN1 will be the only product available.

NOTE: While the unit is adjusting to the new set temperature, the product name flashes in the display. In the Dedicated Mode this is "BUN1". In the Product Mode, the name will be the currently selected product.

When the unit reaches set temperature, the product's name is displayed steadily in Product Mode, or the display shows "RDY" in Dedicated Mode.

The adjustment time necessary will depend on the set temperature.

Product Selection (Product Mode Only)

Press and release any of the four numbered buttons (i.e., 1, 2, 3 or 4) to select the product associated with that button. (See **Figure 2**.)

The LED above the selected Product button glows steady green to indicate the current selection and the display will show the selected product's name.

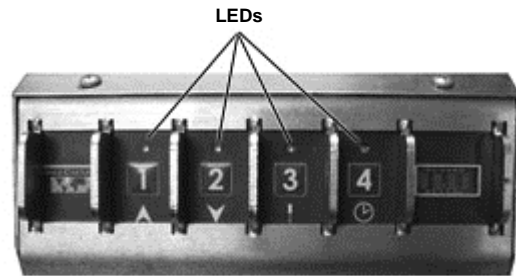


Figure 2

Ready-to-Toast Indication

While the unit is warming up, a product name flashes in the display. In the Dedicated Mode this is "BUN1". In the Product Mode, the name will be the currently selected product. (See **Figure 3**.)

When the unit reaches set temperature, the product's name is displayed steadily in Product Mode, or the display shows "RDY" in Dedicated Mode.

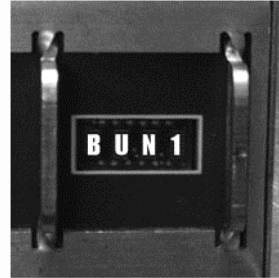


Figure 3

Temperature Mode (F/C) Display Selection

TEMPERATURE MODE: To toggle between Fahrenheit (F) and Celsius (C), at power-on immediately press and release button 3 within 3 seconds. (See **Figure 4**.)

If the unit was set to display temperatures in "C", it changes to display in "F", and vice versa. The display shows "F" or "C" to indicate which mode has been selected. Repeat within 3 seconds to change the display again.

The default Temperature Mode is Celsius.

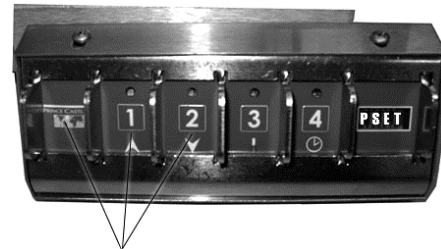


Figure 4

Resetting to Factory Presets

To reset all settings to factory presets, at power-on immediately (within 3 seconds) press and hold the **LOGO**, **UP** and **DOWN** buttons simultaneously until the display shows "PSET". Release all buttons. After about 10 seconds, the unit will operate with factory preset temperature, time and display name values. (See **Figure 5**.)

All previously saved settings are lost upon resetting the defaults.



Press These Buttons
at the Same Time

Figure 5

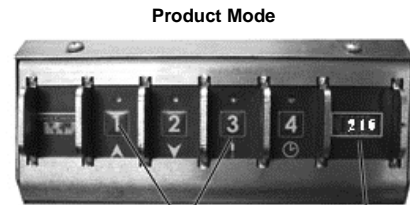
View/Change Set Temperature

To View the Current Set Temperature

In Product Mode:

Press and hold the currently selected product's button and immediately press the **TEMPERATURE** button. Release both buttons.

The display will show the pre-set toasting temperature for the selected product. (See **Figure 6**.)



Press PRODUCT Button and
TEMPERATURE Button

Product's
Set Temperature
Is Displayed

Figure 6

In Dedicated Mode:

Press and release the **TEMPERATURE** button. The display will show the pre-set toasting temperature for "BUN1". (See **Figure 7**.)



Press
TEMPERATURE Button

Display Shows BUN1
Set Temperature

Figure 7

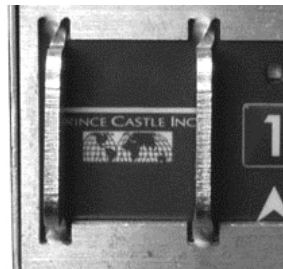
To Change the Set Temperature

1 Press the button(s) used to view the set temperature. Hold the button(s) for 6 seconds.
The LED above the **TEMPERATURE** button will flash yellow, indicating that the unit is now in set-temperature programming mode. Release all buttons.

2 Press and release the **UP** or **DOWN** buttons to change the currently selected product's toasting temperature. Holding either button for 3 seconds will allow automatic "fast scrolling" for easier programming.
The temperature can be set from 37°C to 287°C (100°F to 550°F).

3 When finished, press and release the **TIME** button to save the new value and return to toasting.
Press and release the **LOGO** button at any time to exit the programming mode without saving any changes made.

*NOTE: While the unit is adjusting to the new set temperature, the product name flashes in the display. In the Dedicated Mode this is "BUN1". In the Product Mode, the name will be the currently selected product.
When the unit reaches set temperature, the product's name is displayed steadily in Product Mode, or the display shows "RDY" in Dedicated Mode.
The adjustment time necessary will depend on the set temperature.*



LOGO Button

Figure 8

View/Change Set Toasting Time

To View the Set Toasting Time

In Product Mode:
Press and Hold the currently selected product's button and immediately press the **TIME** button. Release both buttons. The display will show the present toasting time for the selected product. (See **Figure 9**.)

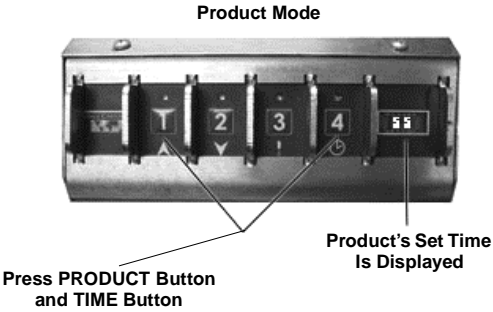


Figure 9

In Dedicated Mode:

Press and release the **TIME** button. The display will show the present toasting time for "BUN1".

In either mode, after 3 seconds the display will return to showing the currently selected product time. (See **Figure 10**.)

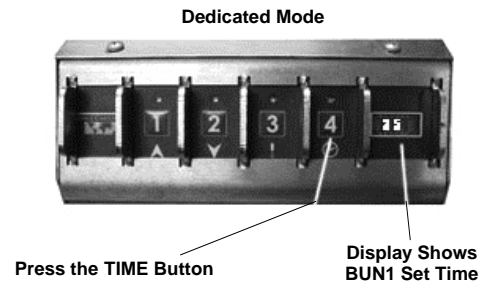


Figure 10

To Change the Set Toasting Time

- 1 To change the toasting time of the currently selected product, press the same button(s) used to view the toasting time. Hold the button(s) for 6 seconds.

The LED above the **TIME** button will flash yellow, indicating that the unit is now in set-time programming mode. Release all buttons.

- 2 Press and release the **UP** or **DOWN** buttons to change the currently selected product's toasting time. Holding either button for 3 seconds will allow automatic "fast scrolling" for easier programming.

The time can be set from 1 sec. to 9 minutes, 59 seconds.

- 3 When finished, press and release the **TIME** button to save the new value and return to toasting.

Press and release the **LOGO** button at any time to exit the programming mode without saving any changes. (See **Figure 11**.)

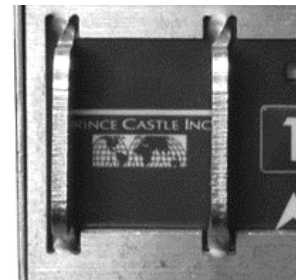


Figure 11

View/Change Duty Time Alarm

- A. Press and hold the **LOGO** button. Immediately press the **TIME** button.

B. Release all buttons. The display will show the present duty time for "BUN1" in **Dedicated Mode** and for whichever product is selected in **Product Mode**.

- Press and release the **UP** or **DOWN** buttons to change the currently selected product's duty time.

When finished, press and release the **TIME** button to save the new value and return to toasting.

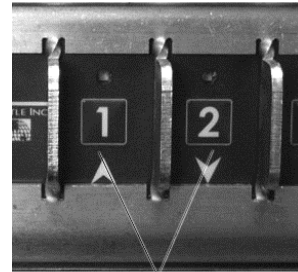
- To change the duty time of the currently selected product, press and hold the buttons in Step 1 for 6 seconds.

The LEDs above the **TIME** and **UP** Arrow button will flash yellow, indicating that the unit is now in the duty time programming mode.

- To exit the programming mode without saving any changes, press and release the **LOGO** button.
- NOTE: The duty time may be set to OFF or 15 – 20 seconds. If not off, the duty alarm will sound the programmed number of seconds after toasting is started.*

Standby (Energy Saving) Mode

- Direct Method:** To place the unit in Standby Mode, close the platen and press and hold the **UP** and **DOWN** buttons together for 3 seconds. The unit will stop timing and the display will indicate "STBY". Open the platen to cancel Standby mode. (See **Figure 12**.)



UP and DOWN Arrows

Figure 12

- After Toasting:** After toasting is complete, the Done Alarm will sound for 7 seconds. If the platen is left closed, the Toaster Grill will automatically enter the Standby Mode and the display will read "STBY". Open the Toaster Grill to reactivate it from Standby Mode. (See **Figure 13**.)

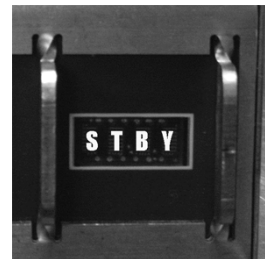


Figure 13

View/Calibrate Platen Temperature

Important!

Do NOT perform this procedure until the Toaster Grill has been on for at least 45 mins. and the temperature has stabilized. Do NOT use the Toaster Grill during the first 45 minutes.

Temperature can only be adjusted $\pm 10^{\circ}\text{C}$ ($\pm 18^{\circ}\text{F}$) during calibration.

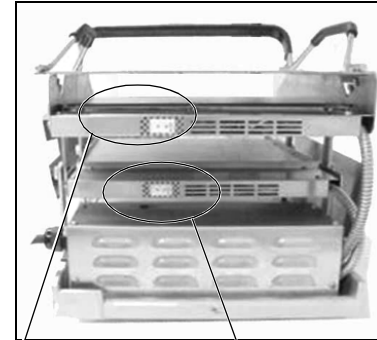
Important!

If the temperature reading from the external temperature port is greater than $\pm 3^{\circ}\text{C}$ ($\pm 5^{\circ}\text{F}$) compared to the Toaster Grill temperature display, proceed with the following. If temperature reading is within $\pm 3^{\circ}\text{C}$ ($\pm 5^{\circ}\text{F}$), the Toaster Grill is functioning properly and does not need calibration.

Upper Platen (248 Models Only)

- 1** A. Plug an external temperature meter into the external port (Type K mini-jack) of the heater platen.
- B. Using the external temperature meter as a standard, adjust the Toaster Grill's temperature display to match the meter's temperature display by the following procedure.

NOTE: Yellow Type K Thermocouple mini-jack temperature ports are located on the back of the 248 Model, behind each of the two platens. (See Figure 14.)

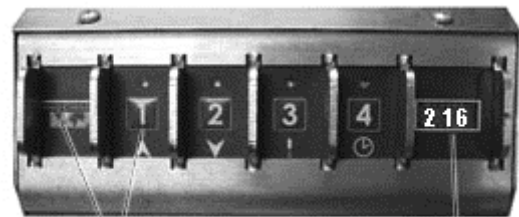


Upper External

Lower External

Figure 14

- 2** A. To view and/or calibrate the platen temperature, press and hold the **LOGO** button.
 - B. Immediately press the **UP** button to view the Upper Platen temperature on 248 Models.
 - C. Release both buttons. (See Figure 15.)
- The display shows the Upper Platen's temperature. After 3 seconds, the display returns to showing the currently selected product.



Press LOGO Button and UP Arrow

Display Shows the Upper Platen Temperature (248 Only)

Figure 15

Toaster Grills Models 247 & 248

3 To calibrate the Upper Platen, press and hold the **LOGO** and **UP** buttons, as in Step 2, but continue holding them for 6 seconds.

The LEDs above to buttons **1** & **3** flash, indicating that the unit is now in Upper Platen temperature calibration mode.

Release all buttons.

4 To change the Upper Platen's displayed temperature, press and release button **UP** or **DOWN** Arrow.

After changing the value, be sure to wait for the display to show the temperature change.

5 To save the new value and return to toasting, press and release button **4**.

To exit programming without saving any changes made, press and release the **LOGO** button.

Lower Platen (All Models)

1 A. Plug an external temperature meter into the external port of the heater platen.
B. Using the external temperature meter as a standard, adjust the Toaster Grill's temperature display to match the meter's temperature display, by the following procedure.

2 A. To view the Lower Platen's temperature, press and hold the **LOGO** button.
B. Immediately press the **DOWN** button. Release all buttons.
The display shows the Lower Platen's temperature. After 3 seconds, the display returns to showing the currently selected product. (See **Figure 16**.)



Press **LOGO** Button and **DOWN** Arrow

Display Shows the Lower Platen Temperature

Figure 16

3 To calibrate the Lower Platen, press and hold the **LOGO** button and **DOWN** arrow, as in Step 2, but continue holding them for 6 seconds.

The LEDs above buttons **2** & **3** flash, indicating that the unit is now in Lower Platen temperature calibration mode.

Release all buttons.

*NOTE: A yellow temperature port is located on the back of the 247 Model, behind the platen (same as the Lower External Port in on 248 Model figure above). (See **Figure 16**.)*

4 To change the Lower Platen's displayed temperature, press and release **UP** or **DOWN** arrows.

After changing the value, be sure to wait for the display to show the temperature change.

5 When finished, press and release button **4** to save the new value and return to toasting.

To exit programming without saving any changes made, press and release the **LOGO** button.

Change Product Name (Product Mode Only)

- 1** Place the Toaster Grill in **PRODUCT MODE** (refer to "Mode Selection").
Press one of the four numbered buttons (i.e., **1**, **2**, **3** or **4**) to select the product name you wish to change.
- 2** Press and hold the **LOGO** button and button **3** for 6 seconds.
The LED next to the currently selected Product flashes and the first character of its displayed name blinks.
- 3** A. Use **UP** or **DOWN** arrows to scroll through the available characters for the display.
B. Hold either button for 3 seconds to allow automatic "fast scrolling" for easier programming.
- 4** When the desired character is displayed in the first position, release the **UP** or **DOWN** arrow, and press and release button **3** to move on to the second display character.
- 5** A. Repeat steps 3 & 4 to program each character as desired.
B. When in the fourth position, press and release button **3** to return to the first display character.
- 6** When the display name is changed as desired, press and release button **4** to save it.
To exit programming without saving any changes made, press and release the **LOGO** button.

Set Volume Levels (All Models)

- 1** To view the current volume level, press and hold the **LOGO** button. Immediately press and hold the **TIME** button and **TEMPERATURE** button to view the present Volume Level.
Release all buttons.
The display will return to showing the currently selected product.
- 2** To change the volume level, press and hold the buttons in Step 1 for 6 seconds. The display will continue to show Volume Level and a tone will sound indicating that the unit is now in Volume Setting Mode.
- 3** Press and release the **UP** or **DOWN** arrows to adjust the volume level.
When finished, press and release the **TIME** button to save the new value and return to toasting.

Adjusting Bun Crush Settings

To adjust the bun crush settings, use the knob located on the front of the unit's base. There are 10 incremental settings, each increasing the center gap by approximately 2 mm. (See **Figure 17**.)

- To set the thickness from 1 to 5, lift and slide the knob to the left-most position. Then, rotate the knob until the desired setting is in the "window".
- To set the thickness from 6 to 10, lift and slide the knob to the right-most position. Then, rotate the knob, until the desired setting is in the "window".

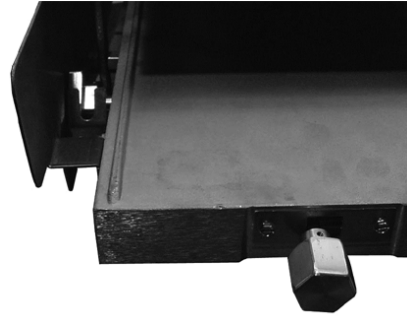


Figure 17

Adjusting for Bun Thickness

The 248 model has two sets of notches in the side bun fences. (See **Figure 18**.)

- Put the bun board in the front, lower notches for REG or QTR buns.
- Use the rear, upper notches for MAC or RIB buns.

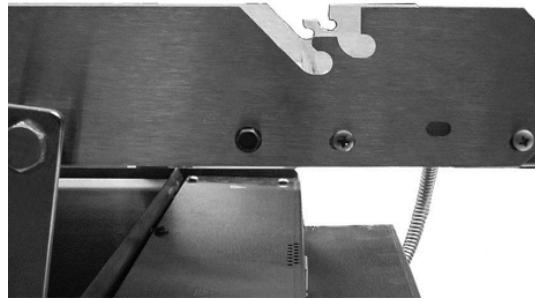


Figure 18

Conditioning the Platens

- 1** To minimize bun-sticking, the platens should be wiped weekly with McD Bun Toaster Grill Release Agent.

 **CAUTION**

Use only McD Bun Toaster Grill Release Agent on bun Toaster Grills. Other products may cause damage and void the Warranty.

- A. Dust all loose crumbs from Toaster Grill surfaces.
- B. Apply McD Bun Toaster Grill Release Agent to cool or warm Toaster Grill platens.

- 2** To coat the platen surface, thoroughly wet a clean, folded customer napkin or paper towel with Toaster Grill Release Agent, and place it on No. 257 cleaning tool.

- 3** A. Rub a generous amount of the Release Agent over the entire surface of the platen until well coated.
B. Repeat Steps 2 & 3 for other platens, including undersides.

 **WARNING**

BURN HAZARD! Use protective gloves and No. 257 cleaning tool when conditioning hot platens.


IMPORTANT! Do NOT wipe Toaster Grill with a damp cloth after Release Agent is applied. Doing so removes Agent and causes sticking.

Toaster Grill platens must be clean and dry.

- 4** Reapply Release Agent weekly to all platen surfaces while Toaster Grill is cold.
If sticking occurs between weekly applications, reapply Release Agent more frequently as described in Steps 1 – 3.

Cleaning

- 1** A. Periodically and upon shutdown, use a clean, dry soft cloth to wipe down the Toaster Grill unit.
B. When the platens are cool, you may also use a mild soap solution on a damp soft cloth to remove stubborn food remains, if necessary.
Do NOT use any unapproved agents or cleaning solutions inside or on surfaces of Toaster Grill unit. Such misuse could void the warranty.

 **WARNING**
Do Not Clean with Water Jet.

- 2** Remove the side covers, as shown, for further cleaning. (See **Figure 19**.)

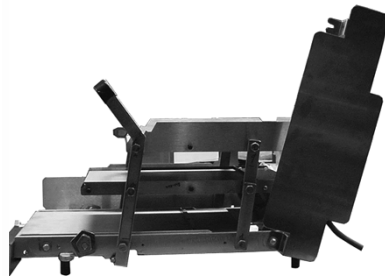


Figure 19

- 3** Replace side covers when finished. (See **Figure 20**.)

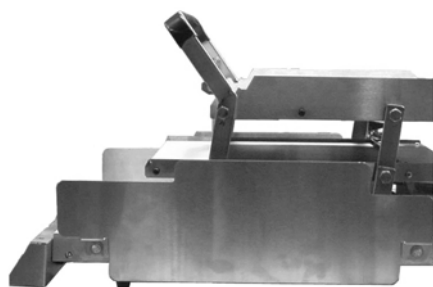




Figure 20

Troubleshooting Guide

 **WARNING**

SHOCK HAZARD! Live circuits are exposed! Use extreme care during electrical circuit tests. Do NOT attempt any troubleshooting without proper authorization to do so.

 **WARNING**

Inspection, testing and repair of electrical equipment are to be performed by qualified service personnel ONLY. Unplug unit during testing, except as electrical tests are required.

PROBLEM	PROBABLE CAUSE	SOLUTION
Platen loose.	Platen bolts loose.	Tighten platen bolts.
No alarm.	Defective timer switch.	Replace timer switch.
	Activation magnet is missing.	Two magnets are required.
Buns being crushed.	Stop blocks not adjusted properly.	Adjust stop blocks.
	Warped bun trays.	Straighten or replace bun trays.
	Buns cut improperly.	Contact bakery.
	Warped bun board.	Straighten or replace bun board.
Platen does not heat.	No power.	Check power source.
	Power switch defective.	Replace power switch.
	Loose wiring.	Correct as necessary.
	Defective temperature probe.	Replace temperature probe.
	Platen burned out or shorted.	Replace platen; call Service Agency.
Buns sticking to platen.	Excessive heat due to reversed upper and lower temperature probe connections.	Reverse connections of upper and lower temperature probe connections in electrical box.
	Build up of sugar on platen.	Clean platen.
Cold platen.	Loose electrical connection.	Reconnect wires from solid-state relay to printed circuit boards.

Ordering Parts and Service

To Order Replacement Parts or Service —

INTERNATIONAL: Contact your kitchen Equipment Supplier or designated repair facility for parts and service.

Exploded Views

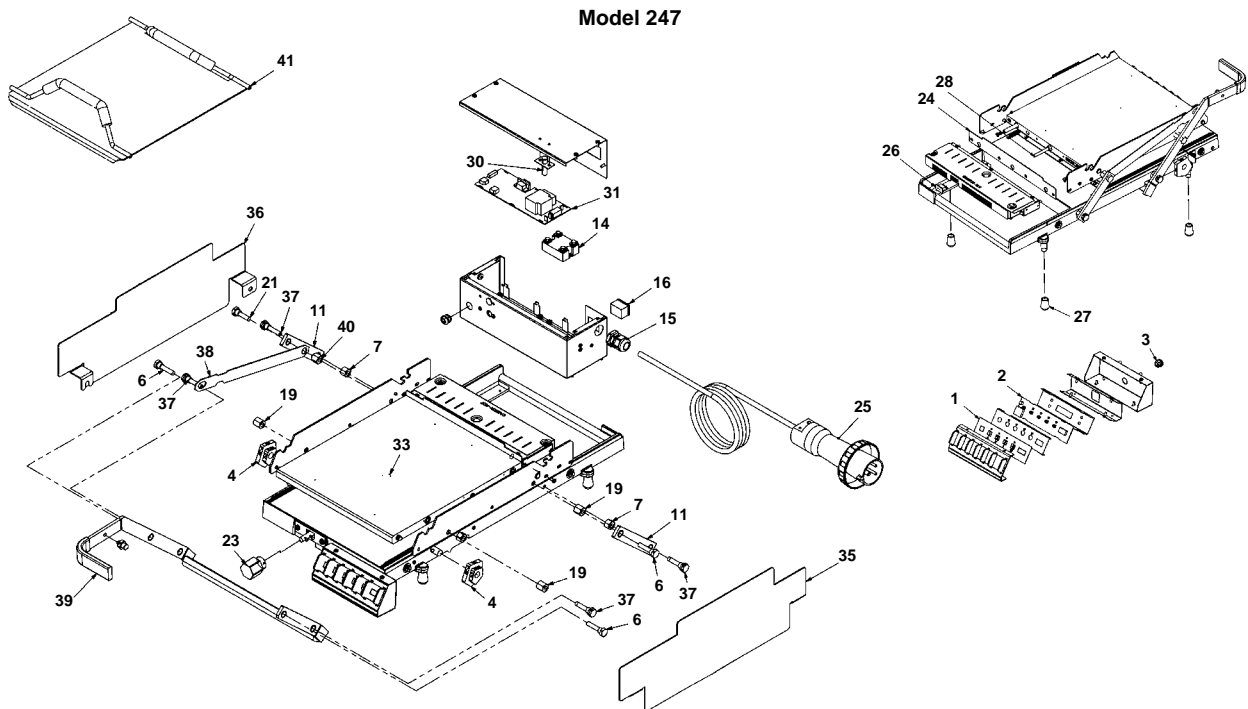
Parts Breakdown

No.	Part No.	Description
1	248-141S	Overlay Kit
2	248-140S	Display Printed Circuit Board Kit
3	66-017S	Strain Relief Kit
4	248-055S	Stop Block Kit
5	411-149S	Front Lever Kit *
6	411-60S	Lower Platen Stud (Pkg. of 2)
7	411-113S	Base Spacer (Pkg. of 7)
8	248-019S	Lower Platen Fence Kit, LH *
9	48-018S	Lower Platen Fence Kit, RH *
10	411-461S	Rear Upper Lever Assembly *
11	411-459S	Rear Lower Lever Assembly
12	248-044S	Side Panel Kit, LH *
13	248-109S	Side Panel Kit, RH *
14	65-058S	Relay
15	66-045S	Strain Relief
16	78-196S	Switch Kit
17	411-61S	Lower Platen Stud (Pkg. of 2) *
18	411-57S	Platen Spacer (Pkg. of 2) *
19	411-221S	Spacer Kit (Pkg. of 4)
20	248-099S	Base Spacer Kit (Pkg. of 2) *

* Not shown.

No.	Part No.	Description
21	411-147S	Upper Platen Stud (Pkg. of 2)
22	248-048S	Safety Latch Kit *
23	248-114S	Knob Kit
24	248-045S	Rear Bun Fence Kit
25	72-416A	Power Cord Kit
26	88-497S	Mini Jack, Type K
27	89-959S	Rubber Foot (Pkg. of 4)
28	248-095S	Temperature Probe
29	248-038S	Bun Board *
30	248-079S	Reed Switch Kit
31	248-067S	Main Printed Circuit Board Assembly
32	248-111S	Upper Bun Fences Kit *
33	248-090S	Lower Platen Kit
34	248-091S	Upper Platen Kit *
35	247-006S	LH Bun Fence Assembly
36	247-004S	RH Bun Fence Assembly
37	411-347S	Replacement Stud Kit
38	411-114S	Safety Latch Kit
39	247-032S	Front Lever Assembly
40	411-241S	Safety Latch Spacer (Pkg. of 2)
41	247-014S	Bun Board

* Not shown.



Parts Breakdown

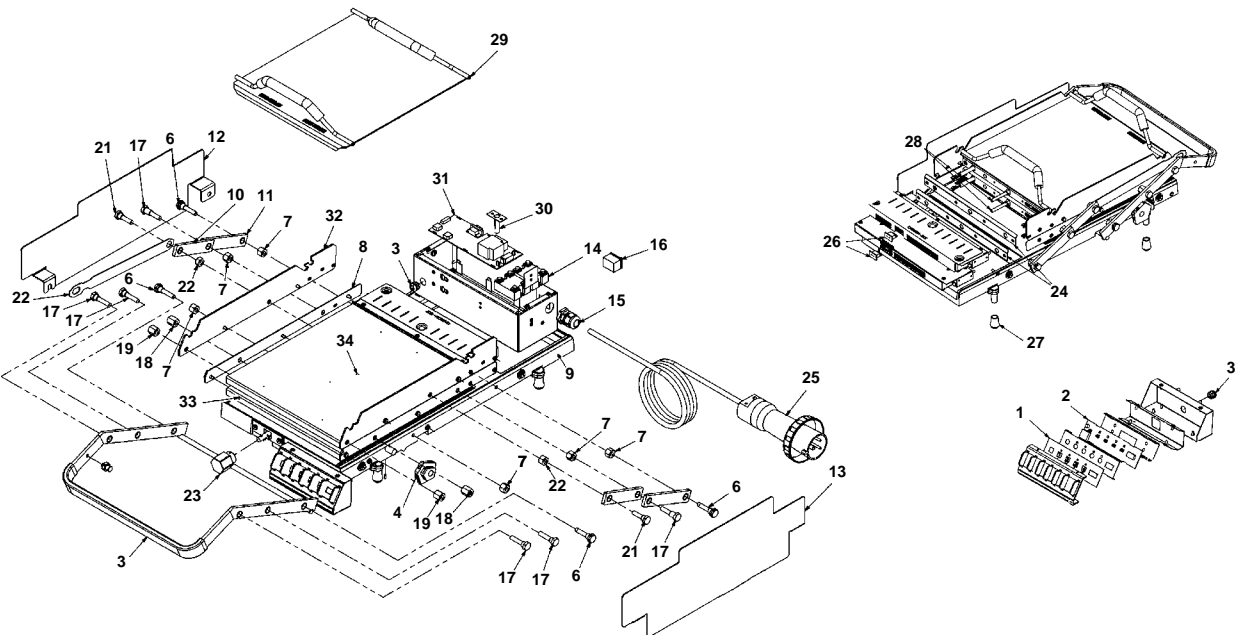
No.	Part No.	Description
1	248-141S	Overlay Kit
2	248-140S	Display Printed Circuit Board Kit
3	66-017S	Strain Relief Kit
4	248-055S	Stop Block Kit
5	411-149S	Front Lever Kit *
6	411-60S	Lower Platen Stud (Pkg. of 2)
7	411-113S	Base Spacer (Pkg. of 7)
8	248-019S	Lower Platen Fence Kit, LH
9	48-018S	Lower Platen Fence Kit, RH
10	411-461S	Rear Upper Lever Assembly
11	411-459S	Rear Lower Lever Assembly
12	248-044S	Side Panel Kit, LH
13	248-109S	Side Panel Kit, RH
14	65-058S	Relay
15	66-045S	Strain Relief
16	78-196S	Switch Kit
17	411-61S	Lower Platen Stud (Pkg. of 2)
18	411-57S	Platen Spacer (Pkg. of 2)
19	411-221S	Spacer Kit (Pkg. of 4)
20	248-099S	Base Spacer Kit (Pkg. of 2) *

* Not shown.

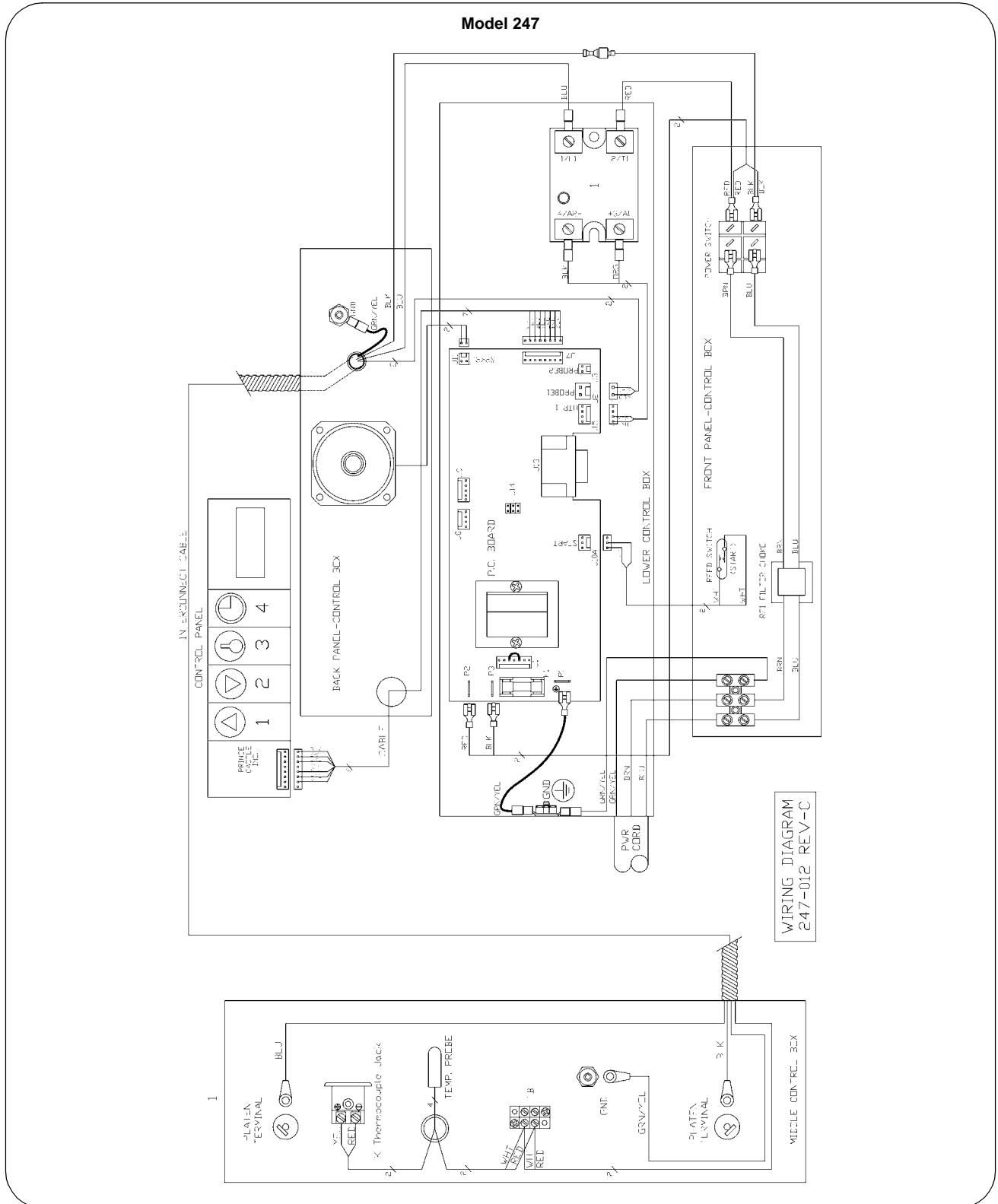
No.	Part No.	Description
21	411-147S	Upper Platen Stud (Pkg. of 2)
22	248-048S	Safety Latch Kit
23	248-114S	Knob Kit
24	248-045S	Rear Bun Fence Kit
25	72-416A	Power Cord Kit
26	88-497S	Mini Jack, Type K
27	89-959S	Rubber Foot (Pkg. of 4)
28	248-095S	Temperature Probe
29	248-038S	Bun Board
30	248-079S	Reed Switch Kit
31	248-067S	Main Printed Circuit Board Assembly
32	248-111S	Upper Bun Fences Kit
33	248-090S	Lower Platen Kit
34	248-091S	Upper Platen Kit
35	247-006S	LH Bun Fence Assembly *
36	247-004S	RH Bun Fence Assembly *
37	411-347S	Replacement Stud Kit *
38	411-114S	Safety Latch Kit *
39	247-032S	Front Lever Assembly *
40	411-241S	Safety Latch Spacer (Pkg. of 2) *
41	247-014S	Bun Board *

* Not shown.

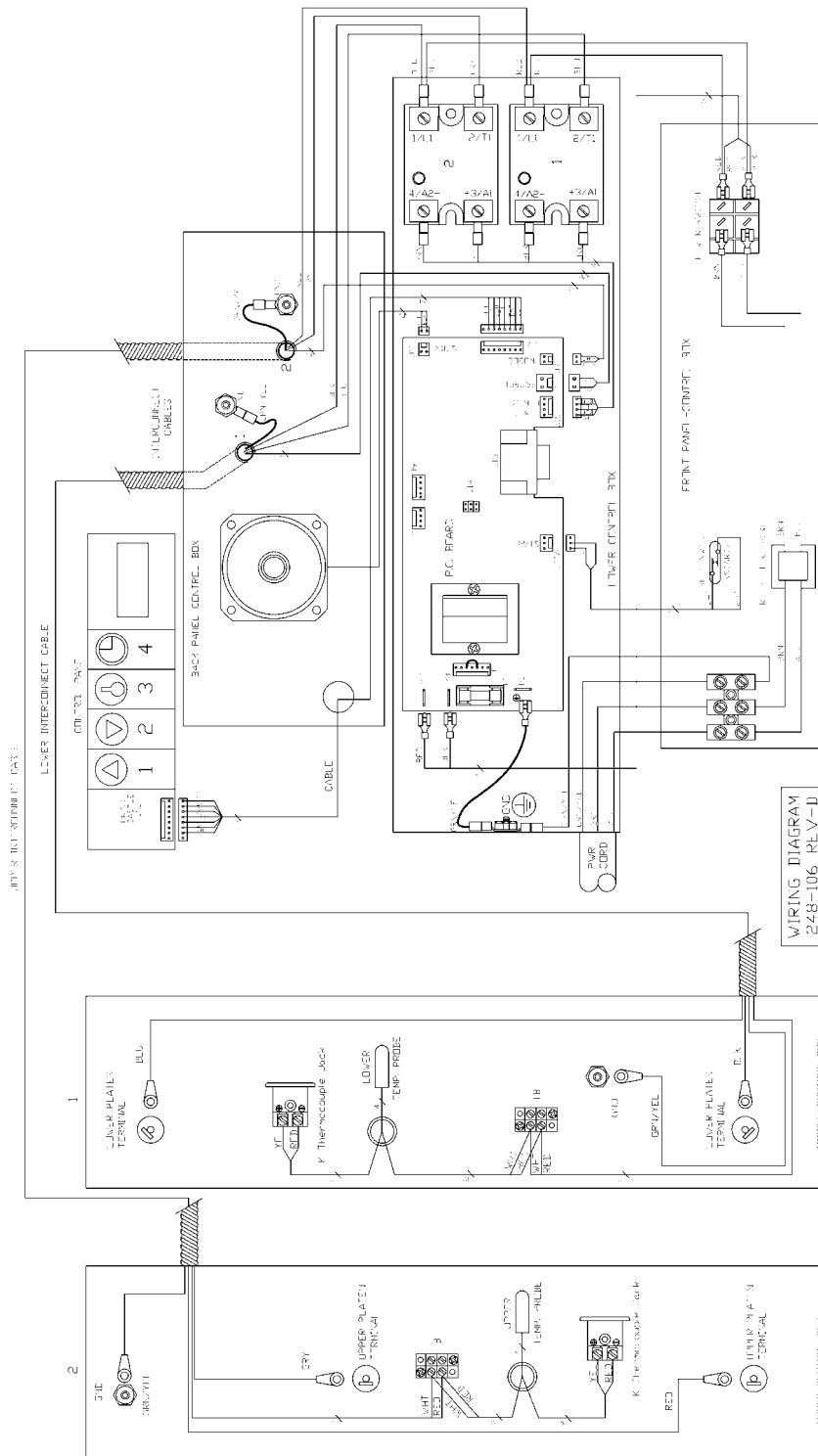
Model 248



Wiring Diagrams



Model 248





Planned Maintenance System: Maintenance Requirement Card (MRC)

Pictures and additional information; Corresponding Chapter of Equipment Manual

When:
Weekly

Tools:
McD Bun Toaster Release Agent (HCS), Customer paper napkins or paper towels, Protective gloves, No. 257 cleaning tool.

Prince Castle: Bun Toasters

Precaution

During some checks, live electrical circuits are exposed, and hot toasting surfaces are uncovered.

WARNING!

BURN HAZARD! The procedures on this card often include the use of chemical products. These chemicals are highlighted with boldface letters, followed by the abbreviation "HCS" (Hazard Communication Standard) in the tools portion of the procedure. See the *Hazard Communication Standard (HCS) Manual* for the appropriate Material Safety Data Sheet(s) (MSDS).

Applying Bun Toaster Release Agent

To minimize bun sticking, the Platens should be wiped weekly with McD Bun Toaster Release Agent.

CAUTION!

Use only McD Bun Toaster Release Agent on bun toasters. Other products may damage toasters.

1. Dust all loose crumbs from toaster surfaces.
2. Apply McD Bun Toaster Release Agent to hot toaster Platens. Toaster does not need to be cooled down before applying Toaster Release Agent.

CAUTION!

BURN HAZARD! Use protective gloves and No. 257 cleaning tool when conditioning hot Platens.

IMPORTANT!

Do NOT wipe toaster with a damp cloth after Release Agent is applied. Doing so removes Agent and causes sticking.



Toaster Platens must be well rinsed and dry.

3. To coat top Platen surface, thoroughly wet a clean, folded customer napkin or paper towel with Toaster Release Agent, and place it on No. 257 cleaning tool.



Platen undersides and difficult to reach areas can be coated by placing a customer napkin or paper towel on No. 257 to apply Release Agent to Platen surface.

4. Rub a generous amount of the Release Agent over the entire surface of the Platen until well coated.
5. Repeat Steps 2 and 3 for other Platens, including undersides.
6. Reapply Release Agent weekly to all Platen surfaces while toaster is cold.
7. If sticking occurs between weekly applications, reapply Release Agent more frequently as described in Steps 1-3.

When:
Monthly

Tools:
Digital thermometer with male-to-male lead extension for "Type K" temperature probe.

Check Calibration of Temperature

IMPORTANT!

Do NOT perform this procedure until the toaster has been on for at least 45 minutes and the temperature has stabilized. Do NOT use the toaster during this period!

IMPORTANT!

If the temperature reading on the Platen is greater than $\pm 3^{\circ}\text{C}$ ($\pm 5^{\circ}\text{F}$) compared to the toaster temperature display, proceed with the following. If temperature reading is within range, toaster is functioning properly and does not need calibration.

Upper Platen (248 Models Only)

1. Plug an external temperature meter into the external port of the heater Platen.
2. Using the external temperature meter as a standard, adjust the toaster's temperature display to match the meter's temperature display by the following procedure.



Yellow temperature ports are located on the back of the 248 Model, behind each of the two Platens.

3. To view and/or calibrate the Platen temperature, press and hold the LOGO button.
4. Immediately press the UP button to view the Upper Platen's temperature on 248 Models.
5. Release all buttons. The display shows the Upper Platen's temperature. After 3 seconds, the display returns to showing the currently selected product.
6. To calibrate the Upper Platen, press and hold the LOGO and UP buttons for 6 seconds. The LEDs above 1 and 3 flash, indicating that the unit is now in Upper Platen temperature calibration mode.
7. To change Upper Platen's displayed temperature, press and release button 1 or 2.



Be sure to wait after changing the value for the display to "catch up."

8. When finished, to save the new value and return to toasting, press and release button 4.
9. To exit programming without saving any changes made, press and release the LOGO button.

Lower Platen (All Models)

1. Plug an external temperature meter into the external port of the heater Platen.
2. Using the external temperature meter as a standard, adjust the toaster's temperature display to match the meter's temperature display, by the following procedure.



A yellow temperature port is located on the back of the 247 Model, behind the Platen (same as the Lower External Port in on 248 Model figure above).

3. To view the Lower Platen's temperature, press and hold the LOGO button.
4. Immediately press the DOWN button to view the Lower Platen temperature. Release all buttons.
5. The display shows the Lower Platen's temperature. After 3 seconds, the display returns to showing the currently selected product.
6. To calibrate the Lower Platen, press and hold the LOGO button and DOWN arrow for 6 seconds. The LEDs above 2 and 3 flash, indicating that the unit is now in Lower Platen temperature calibration mode.

- To change Lower Platen's displayed temperature, press and release button 1 or 2.



Be sure to wait for the display to "catch up" after changing the value.

- When finished, press and release button 4 to save the new value and return to toasting. To exit programming without saving any changes made, press and release the LOGO button.

When:

Monthly

Tools:

McD Hi Temp Grill Cleaner (HCS),
McD Bun Toaster Release Agent
(HCS), McD No-Scratch Pad, Base
of Big Breakfast container, No. 257
cleaning tool, Clean grill cloths
(qty. 6-8), Customer paper napkins
or paper towels, Protective gloves

Clean Nickel Platen

PREPARING BUN TOASTER

- If toaster is cool, heat to operating temperature.

IMPORTANT!

Bun toaster must be operating temperature for cleaning.

- Turn toaster switch to OFF position and unplug cord.



WARNING!

SHOCK HAZARD! Failure to unplug cord before cleaning may cause electrical shock.



CAUTION!

BURN HAZARD! Use protective gloves during the entire cleaning process.

- Remove all buns, bun trays and bun tray liners from the bun toaster stand.
- Turn on the grill exhaust fan, and move toaster stand in front of grill.

HOW TO CLEAN

- Firmly attach McD No-Scratch Pad to cleaning tool. Use only nonabrasive blue No-Scratch Pads designed for grill cleaning.

IMPORTANT!

Do NOT use a green pad. It damages the Platen surface.

- Pour one packet of McD Hi-Temp Grill Cleaner into breakfast container base.
- Turn bun board upside-down and lay on upper Platen or plate.
- Dip No-Scratch Pad into Hi-Temp Grill Cleaner.
- Spread cleaner over bun board and lightly scrub until clean. Apply additional cleaner, as needed. Place bun board in the back sink area for cooling and rinsing.
- If toaster is equipped with an aluminum plate, repeat Step 5 to clean both sides of the plate.
- Dip No-Scratch Pad into cleaner and lightly spread a coating of cleaner onto top surface of Platen.

IMPORTANT!

Do NOT pour cleaner onto surface. Apply only with No-Scratch Pad and Cleaning Tool. Do NOT scrub while applying cleaner.

- Repeat Step 7 for all Platen surfaces, including undersides.
- After repeating cleaner, lightly scrub all Platen surfaces (including undersides) with No-Scratch Pad until all soil liquefies. Apply additional cleaner to cleaning, as needed.

10. Remove No-Scratch Pad from cleaning tool. Fold a clean, damp grill cloth lengthwise and lay it over the end of the cleaning tool. Thoroughly rinse Platens, including undersides, by wiping with a damp grill cloth. Before wiping Platens, always rinse grill cloth in clear water and wring it out until no soil is seen.

IMPORTANT!

Thorough rinsing of the Platen is required to ensure proper release agent performance. Rinse Platens with clean grill cloths until no soil is seen on the cloth.



WARNING!

SHOCK/DAMAGE HAZARD! Do NOT pour water onto the Platens or use dripping wet grill cloths.

11. Repeat the rinsing procedure in Step 10 with a fresh, clean, damp grill cloth to ensure all cleaner and soil are removed from Platens.
12. Wipe remaining parts of the toaster with a clean, damp cloth.
13. Take bun tray platform, bun board and aluminum plate to back sink. Scrub with a pot brush or No-Scratch Pad in a solution of McD All Purpose Concentrate. Do not use abrasive pads. Rinse parts under running water and let air dry.

When:
Monthly

Tools:
Adjustable wrench, Flatblade screwdriver

Tighten Platen Bolts

1. Turn the power switch to the OFF position and unplug cord.



WARNING!

SHOCK HAZARD! Failure to unplug cord before the tightening process may cause electrical shock.

2. Allow toaster to cool before proceeding.
3. Using an adjustable wrench, tighten the platen bolts that hold the handle in upright position.

When:
Monthly

Tools:
Pliers, Hammer, File

Check Bun Tray Platforms, Bun Board, Bun Trays & Spatulas

IMPORTANT!

This check procedure should be conducted while the platforms, trays and spatulas are cold. It should be done for all spatulas, trays and platforms.

BUN SPATULA

1. Lay the spatula on a flat worktable top.
2. Ensure that the entire surface is flat, including the front edge. The front end of the bun spatula must be free from nicks and burrs.
3. Using a file, sharpen front edge of spatula so all nicks and burrs are removed.

BUN BOARD

1. Remove the bun board from the toaster.
2. Lay the bun board on a flat worktable top and inspect for flatness.
3. Measure the distance between the tabletop and the bottom side of the bun board in the front, center and rear. It should be approximately 1/2" (13 mm) for all toasters, except Big Mac 412 and 416 Series, and approximately 3/4" (19 mm) for Big Mac Toasters.
4. Bend as necessary to maintain flatness.