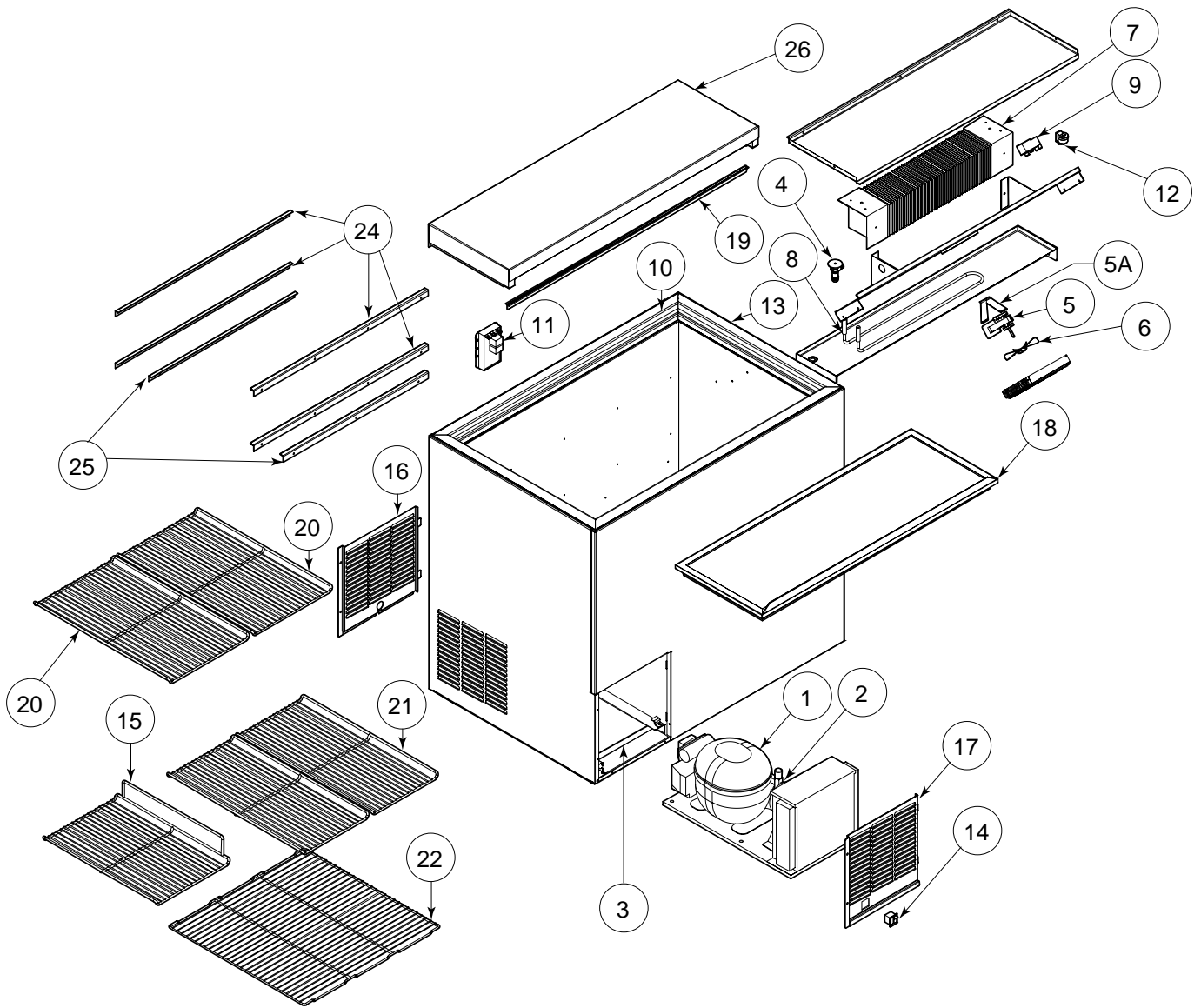


# Replacement Parts – Glass Frosters



## CAUTION

- Service should be done by a qualified refrigeration technician.
- Disconnect all power before servicing the cabinet.

# Replacement Parts – Glass Frosters

MODEL NOS.		FR24	FR36	FR48	FR60
Item	Description	Part Numbers			
	Complete condensing unit	C22646	C22646	C22646	C22646
1	Replacement compressor R134a	513200003	513200003	513200003	513200003
2	Condensing unit fan motor assy.	215315009	215315009	215315009	215315009
	Terminal board	219101538	219101538	219101538	219101538
	Overload protector	MRT22AFZ5590	MRT22AFZ5590	MRT22AFZ5590	MRT22AFZ5590
	Relay	213516051	213516051	213516051	213516051
	Start capacitor	13556532	13556532	13556532	13556532
3	Condensate pan	64537-1	64626-1	64626-1	64626-1
4	Expansion valve	63549	63549	63549	63549
5	Evaporator fan motor	C15239A	C15239A	(2) C15239A	(2) C15239A
5A	Evaporator fan motor bracket	65060-1	65060-1	(2) 65988-1	(2) 65988-1
6	Evaporator fan blade	63461	63461	(2) 63461	(2) 63461
7	Evaporator coil assembly	64785-1EP	C17511-1EP	C17511-1EP	C17511-2EP
8	Evaporator defrost heater	C25655-1	65045-1	65045-1	61900
9	Temperature control	61282	61282	65290	65290
10	Perimeter heater wire	C25650-1	61388-1	C25649-1	61898
11	Defrost timer	57466	57466	57466	57466
	Timer location	Behind Grille	Inside liner, back left corner		
12	Defrost temp limit switch	57676	57676	57676	57676
13	Breaker strip kit	63608-1	63608-2	63608-3	63608-4
14	Rocker switch with pilot	C31659	C31659	C31659	C31659
15	Compressor side shelf	64810-1	64810-1	64810-1	64810-1
16	Back grille	N/A	64644-1	64644-1	64644-1
17	Front grille	64167A-1	64643-1	64643-1	64643-1
18	Door assembly	66232-24	66232-36	(2) 66232-24	66232-24
	Door assembly (multiple doors)	N/A	N/A	N/A	66232-36
19	Top wiper gasket	63671-24	63671-36	63671-48	63671-60
20	Wide shelf	N/A	(2) 64811-1	(4) 64811-1	(6) 64811-1
21	Narrow shelf	(4) 64809-1	(2) 64809-1	(2) 64809-1	(2) 64809-1
22	Bottom floor rack (wide)	64814-1	64814-1	64814-1	64814-1
23	Bottom floor rack (narrow)	N/A	N/A	64815-1	(2) 64815-1
23A	Complete shelf kit	63613	63614	63615	63616
24	Shelf "L" bracket (long)	N/A	65014-36	65014-48	65014-60
25	Shelf "L" bracket (short)	65015-24	65015-36	65015-48	65015-60
26	Back, top assembly	64692-24A	64692-36A	64692-48A	64692-60A
<b>Items Not Shown</b>					
	Wire harness main	65039-1	65039-1	65038-1	65038-1
	Wire harness, defrost timer to switch (14)	61959	61959	61959	61959
	Evaporator tube (1¼" U. bend)	63553-1	63553-1	63553-1	63553-1
	Evaporator tube (4⅛" U. bend)	63554-1	63554-1	63554-1	63554-1
	Suction/liquid lines heat exchanger with dryer	65089	65089	65089	65089
	Mullion assembly	—	—	64823R	64823R
	Refrigerant charge (oz. R134a)	8.0	10.3	12.5	12.5