



40000A Series Display Merchandisers

ITEM # QTY.

PROJECT

DATE

Self-Contained Countertop Display Case



Model 40048A

48" long x 25" deep single service or pass-thru, self-contained refrigerated display case with insulated self-closing doors, (3) display shelves, and fluorescent illumination. R-134a forced air refrigeration system with high capacity evaporator coil and thermostatic control. Foamed in place, "CFC free" insulation and cordset for 120V operation.



Models ■ 40048A ■ 40048SSA

STANDARD FEATURES:

- Self-contained refrigeration system with thermostatic control, system utilizes "CFC free", R-134a refrigerant.
- Forced air flow through ventilation of compressor housing for proper cooling.
- Foamed in place "CFC free" urethane insulation.
- Insulated self-closing doors.
- Stainless steel exterior finish.
- Hot gas condensate evaporator.
- Stainless steel interior floor.
- Fluorescent illumination.
- Totally self-contained, plug-in installation.
- Model 40048SSA can be Wall-Mounted.

SPECIFICATIONS:

CABINET EXTERIOR: Cabinet body is constructed of all metal. The top, front, sides, and louver panels are stainless steel. Bottom to be corrosion resistant steel with stainless steel tubular framing for flush mounting to counter. Self-closing Insulated glass sliding doors. (Model 40048SSA with thermalpane solid panel in lieu of pass-thru doors on back, and can be wall mounted.)

CABINET INTERIOR: Unit interior to be ABS thermoplastic at ends only with molded shelf supports, stainless interior bottom, and three adjustable powder coated display shelves. Interior top to be aluminum with fluorescent lighting fixture. Unit insulated with CFC free, foamed in place urethane insulation.

DOORS: Insulated sliding glass doors front and back, to be self-closing with rubber wiper between doors to minimize air loss, and vinyl frame to reduce condensation. Doors easily removable for cleaning.

REFRIGERATION: CFC free, R-134a refrigeration system with condensing unit, high capacity evaporator blower coil, hot gas condensate evaporator, and thermostatic control for operator adjustability. Unit totally prewired and to be supplied with 9' cordset (NEMA 5-15P) for 120V plug-in operation.

Randell Manufacturing, Inc.

520 S. Coldwater Rd. Weidman, MI 48893
Phone 1-800-621-8560 Fax 1-800-634-5369

For the most current specifications, visit our WebSite. www.randell.com

Printed/Revised: March, 2002
Rancraft Section 6, Page 1

www.randell.com

Dimensional Data

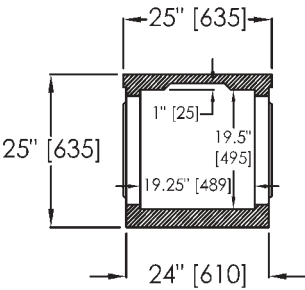
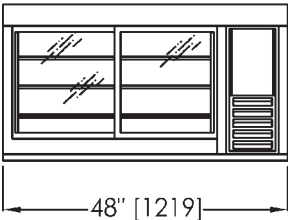
40000A Series

SLIDING GLASS DOORS



40048A

SLIDING GLASS DOORS

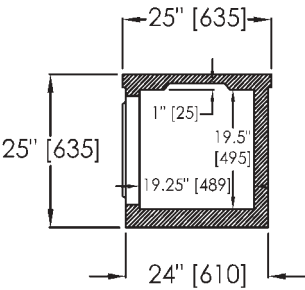
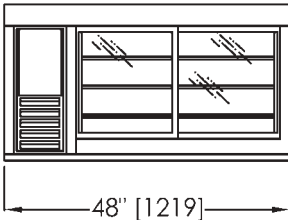


SOLID BACK PANEL

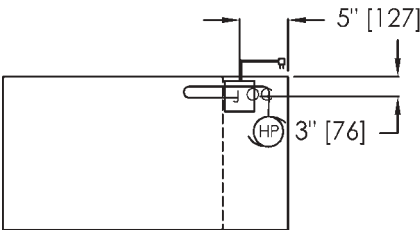


40048SSA

SLIDING GLASS DOORS



Note: Wall mount bracket requires securing to wall studs for support.



LEGEND FOR
40000 SERIES
AFF = ABOVE FINISHED FLOOR

- COMPRESSOR
- JUNCTION BOX
- 9' LONG CORD SET (NEMA 5-15P)
- CONDENSATE DRAIN 1/2"
- HOT GAS CONDENSATE EVAPORATOR

Model	L	D	H	Style	Storage Cu. Ft.	Shelves Sq. Ft.	H.P.	Volt	Amp.	NEMA	Ship Wt.
40048A	48"	25"	25"	Dbl. Serve	7	14	1/3	115/60/1	8.1	5-15P	370
40048SSA	48"	25"	25"	Single Serve	7	14	1/3	115/60/1	8.1	5-15P	370

Display Case Door Opening Sizes - Interior Depths

Unit Length	Clearances Through Door		Interior Depth Behind Sliding Glass Doors
	Lt. to Rt.	Top to Bottom	
48"	13 1/2"	17 3/4"	19"

Our Product Line Is On



AutoCAD™ R12-2000
AutoCAD™ Lt

Randell Manufacturing, Inc.

Due to a continuous program of product improvement, Randell reserves the right to make changes in design and specifications without prior notice