

CME1356 and CME1656 Service Parts

This parts list contains the part numbers and description of the replacement parts available for these two models.

They have been manufactured in both 50 Hz and 60 Hz models, plus there have been model series changes from A to C to D to E to F.

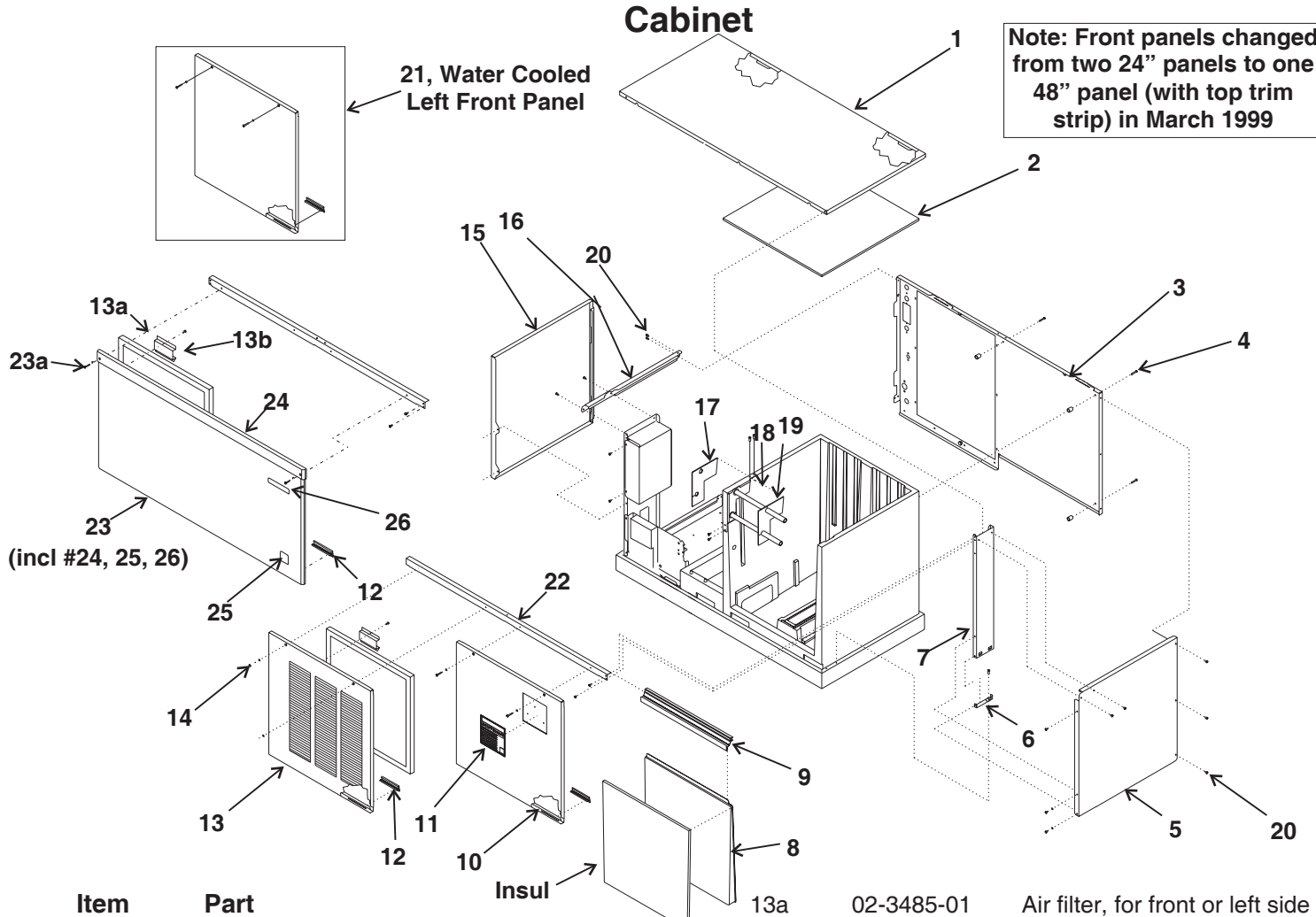
To avoid costly and time consuming errors, double check the model and voltage before ordering a part.

Table of Contents

Cabinet	page 2
Water System	page 3
Air Cooled Refrigeration System	page 4
Water Cooled Refrigeration System	page 5
Electrical	page 6
BH900	page 7
BH1356	page 8
Kit Parts	page 9
Wiring Diagrams	page 10

CME1356 and CME1656 Service Parts

Cabinet



Note: Front panels changed from two 24" panels to one 48" panel (with top trim strip) in March 1999

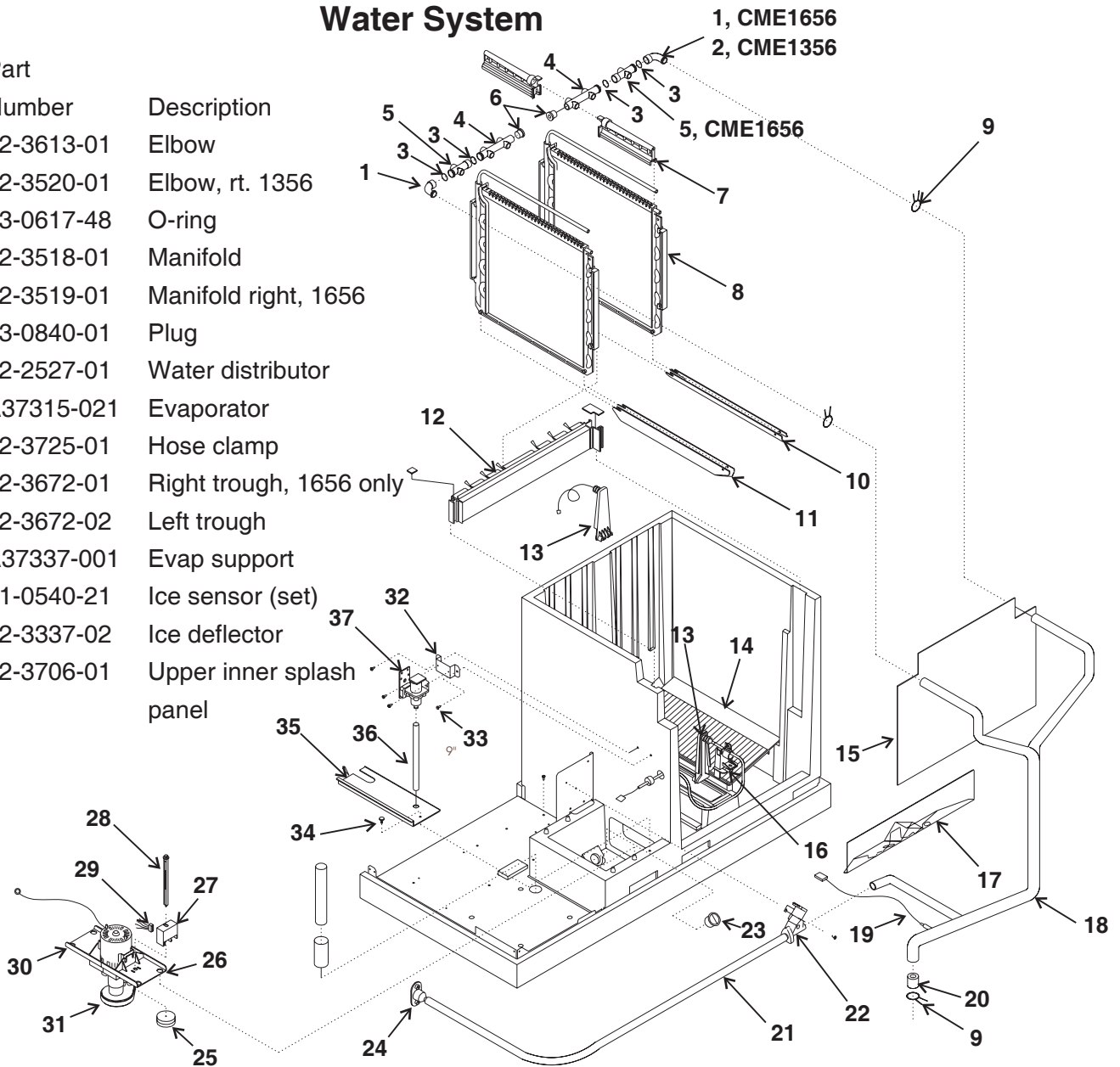
Item Number	Part Number	Description	Part Number	Description		
1	A37202-015	Top panel, Grey	13a	02-3485-01	Air filter, for front or left side	
	A37202-002	Top panel, SS	13b	A37326-001	Filter bracket (either)	
	02-3823-21	Top panel, plastic for C - F series. Will not fit A or B series.	14	03-1735-01	Front panel screw	
2	02-3686-01	Insulation	15	A37198-015	Left side panel, no louvers grey	
3	A37197-001	Back pnl - for wc A & B	16	A37193-001	Left side channel	
	A37196-001	Back pnl - for ac A & B	17	02-3696-03	Left grommet	
	A37670-001	Back pnl for AC C - D	18	A37216-001	Bracket	
	A38026-001	Back pnl for AC E - F	19	02-3696-02	Right grommet	
	A37669-001	SS back pnl for WC C - F	20	03-1531-01	Screw	
4	03-1404-37	Screw	21	A37201-015	24" Left front panel, grey	
	5	A37199-015	Rt side panel, grey, A & B	A37201-002	24" Left front panel, SS	
		A37199-002	Rt side panel, SS, A & B	22	A37195-001	Top front channel
		A37668-001	Rt side panel, C - F series	23	A37489-001	SS 48" panel w/o louvers
6	A37194-001	Right bottom channel	A37489-002	Grey 48" panel w/o louvers		
	7	A37213-001	Right side support	A37489-003	SS 48" panel with louvers	
		8	02-3702-21	Evaporator cover, incl insul	A37489-004	Grey 48" panel with louvers
			02-3701-01	Cover retainer	23a	03-1735-01
10	A37200-015	24" Right front panel, grey	24	02-3794-02	Trim strip	
	A37200-002	24" Right front panel, SS		03-1731-02	Push nut	
11	15-0790-01	Emblem	25	15-0792-02	CM3 emblem	
12	02-3699-01	Panel support clip	26	15-0808-03	Scotsman emblem	
	13	A37262-015	24" Left front panel AC - grey		03-0271-00	Nut for emblems #25 & 26
A37262-002		24" Left front panel, AC -SS				

CME1356 and CME1656 Service Parts

Water System

Item Number	Part Number	Description
-------------	-------------	-------------

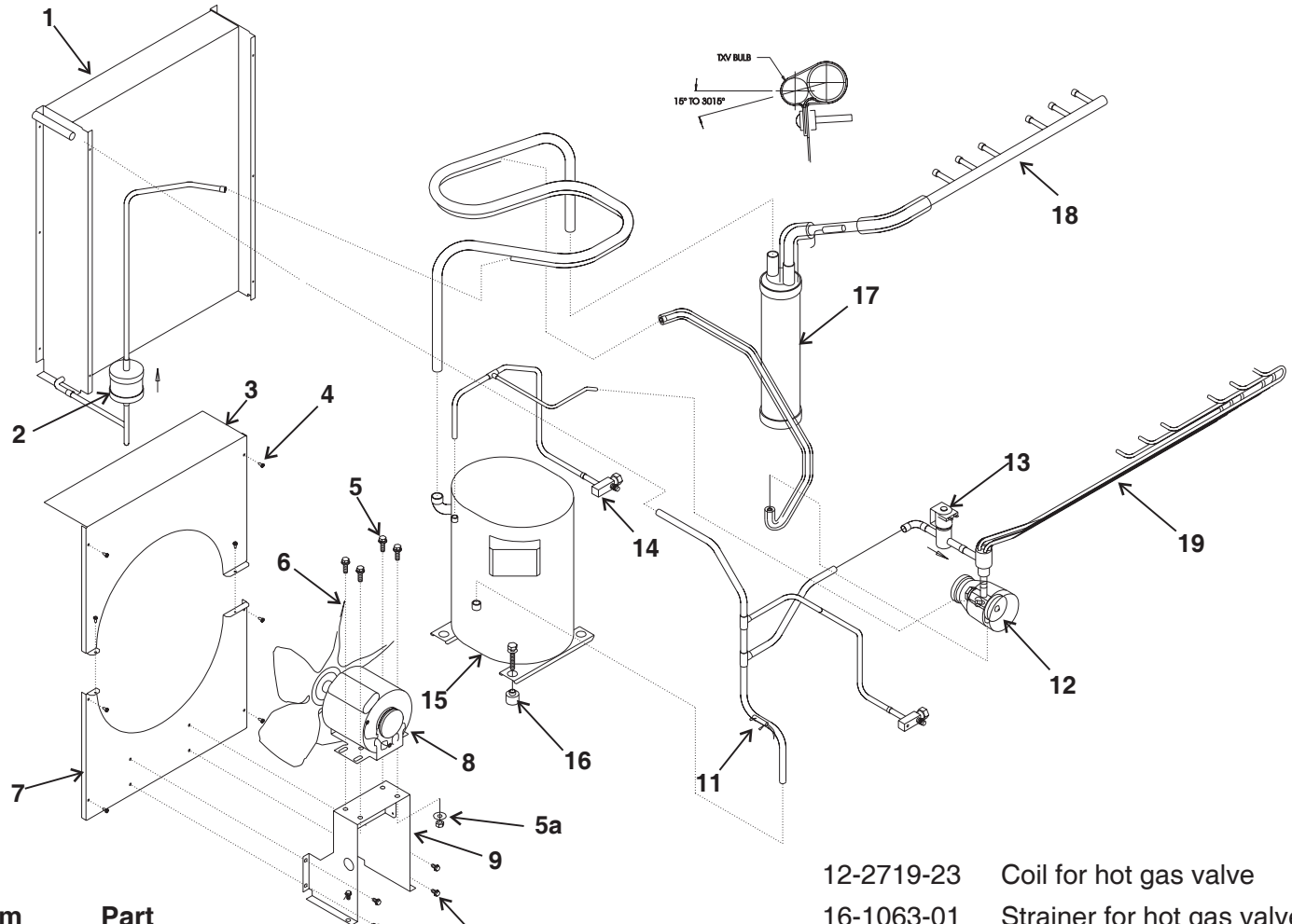
1	02-3613-01	Elbow
2	02-3520-01	Elbow, rt. 1356
3	13-0617-48	O-ring
4	02-3518-01	Manifold
5	02-3519-01	Manifold right, 1656
6	13-0840-01	Plug
7	02-2527-01	Water distributor
8	A37315-021	Evaporator
9	02-3725-01	Hose clamp
10	02-3672-01	Right trough, 1656 only
11	02-3672-02	Left trough
12	A37337-001	Evap support
13	11-0540-21	Ice sensor (set)
14	02-3337-02	Ice deflector
15	02-3706-01	Upper inner splash panel



16	02-3689-01	Ice sensor holder	27	11-0539-21	Water level sensor
17	02-3680-01	Lower inner splash panel	28	02-3383-04	Float stem, tan for 1356
18	02-3660-02	CME1356 water hose		02-3383-05	Float stem, brown for 1656
	02-3660-01	CME1656 water hose	29	12-2665-01	Harness for water sensor
19	11-0515-21	Temp sensor set	30	02-3388-05	Pump bracket
20	02-3614-01	Flow restrictor, 1356 only no longer used	31	12-2582-21	Water pump
21	13-0674-06	Drain hose, order 2 units	32	A37204-001	Bracket
22	11-0514-01	Purge valve	33	03-1404-18	Screw
23	02-3703-01	Drain plug	34	03-1691-01	Nylon screw
24	02-3692-21	Drain fitting	35	02-3534-01	Reservoir cover
25	02-3341-01	Float	36	13-0674-02	Tube, order 1 unit
26	02-3388-04	Pump bracket	37	12-2666-01	Inlet water valve
				16-0355-00	Coupling

CME1356 and CME1656 Service Parts

Air Cooled Refrigeration

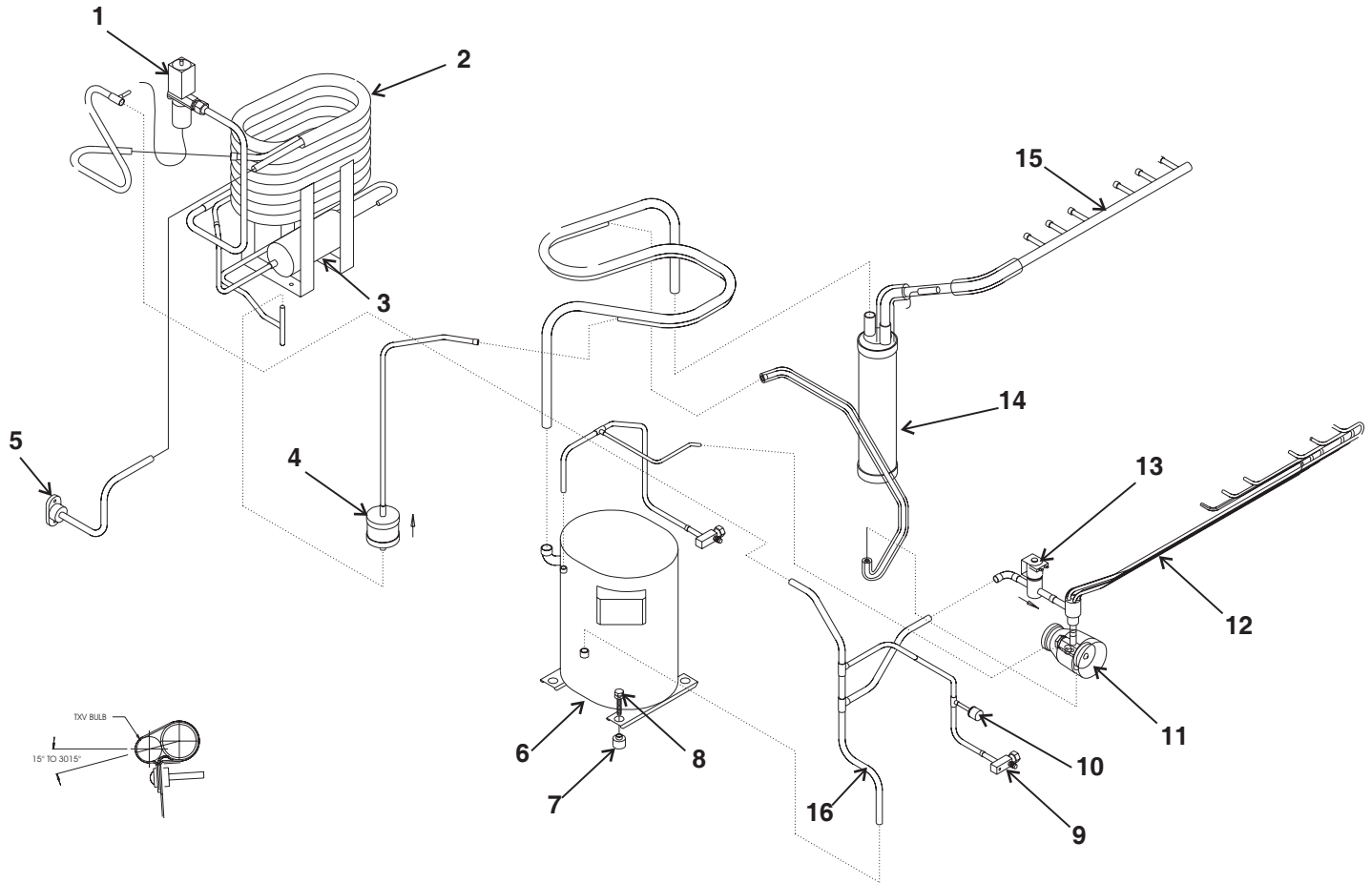


Item Number	Part Number	Description
1	18-8817-01	Air cooled condenser
2	02-3319-02	Filter dryer
3	A37205-001	Top fan shroud
4	03-1531-01	Screw
5	03-1251-01	Hex cap screw
5a	03-1406-10	Nut
6	18-8765-01	Fan blade, 60 Hz
	18-8875-01	Fan blade, 50 Hz
7	A37206-001	Bottom fan shroud
8	18-8818-01	Fan motor
9	A37207-001	Fan bracket
10	03-1645-01	Screw
11	11-0515-21	Temp sensor set
12	16-1066-21	TXV, ANE1 ¼ SZ
	02-3396-01	Insulation for TXV
13	11-0507-21	Hot gas valve, 1356
	11-0507-22	Hot gas valve, 1656
	12-2719-23	Coil for hot gas valve
	16-1063-01	Strainer for hot gas valve
14	16-0832-20	Access valve
	16-0832-03	Port cap
	16-0832-02	Stem cap
15	18-8751-23	Compressor, 60 Hz, single phase
	18-8751-25	Compressor, 60 Hz, 3 phase
	18-8751-27	Compressor, 50 Hz, single phas
16	18-2300-27	Grommet
	18-2200-27	Sleeve
	03-1405-20	Bolt
	03-1407-07	Washer
17	16-1031-21	Accumulator
18	16-1032-02	Suction manifold, 1656
	16-1032-01	Suction manifold, 1356
19	A37312-021	Distributor and tubes, 1356
	A37312-022	Distributor and tubes, 1656

Replacement compressors include a crankcase heater that may be disconnected or used and a dryer.

CME1356 and CME1656 Service Parts

Water Cooled Refrigeration



Item Number	Part Number	Description	Item Number	Part Number	Description
1	11-0478-01	Water regulating valve	9	16-0832-20	Access valve
2	18-8767-25	A - E series water cooled condenser		16-0832-03	Port cap
	18-8865-21	F series water cooled condenser		16-0832-02	Stem cap
3	02-2628-02	Receiver	10	11-0501-21	Hi pressure cut out
4	02-3319-02	Filter dryer	11	16-1066-21	TXV, ANE1 ¼ SZ
5	A31828-003	Adapter		02-3396-01	Insulation for TXV
6	Compressors:		12	A37312-021	Distributor and tubes, 1356
	18-8751-23	60 Hz, single phase		A37312-022	Distributor and tubes, 1656
	18-8751-25	60 Hz, 3 phase	13	11-0507-21	Hot gas valve, 1356
	18-8751-27	50 Hz, single phase		11-0507-22	Hot gas valve, 1656
7	18-2300-27	Grommet		16-1063-01	Strainer for hot gas valve
	18-2200-27	Sleeve		12-2719-23	Coil for hot gas valve
8	03-1405-20	Bolt	14	16-1031-21	Accumulator
	03-1407-07	Washer	15	16-1032-02	Suction manifold, 1656
				16-1032-01	Suction manifold, 1356
			16	11-0515-21	Temp sensor set

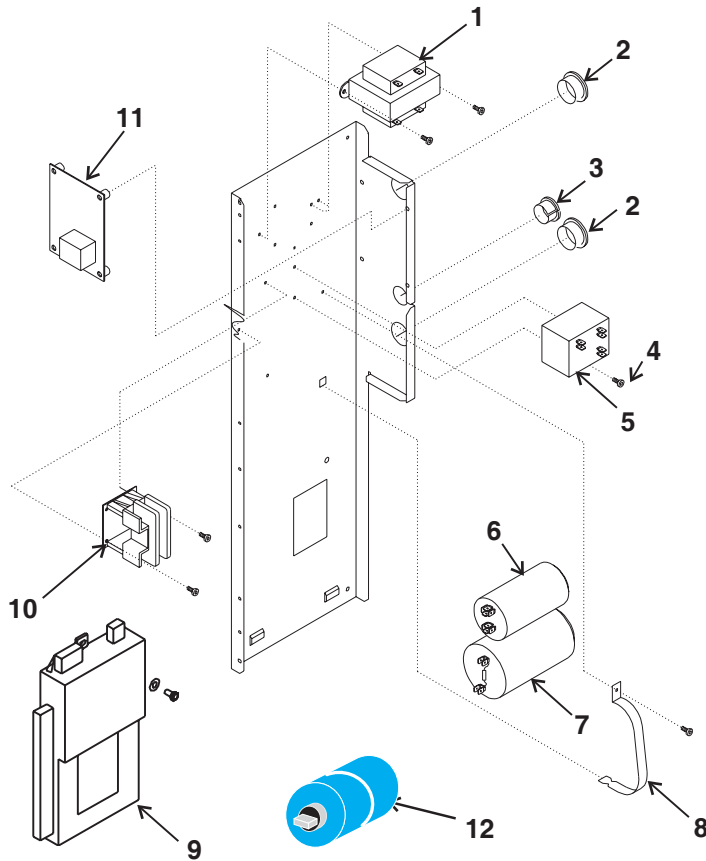
Replacement compressors include a crankcase heater that may be disconnected and a dryer.



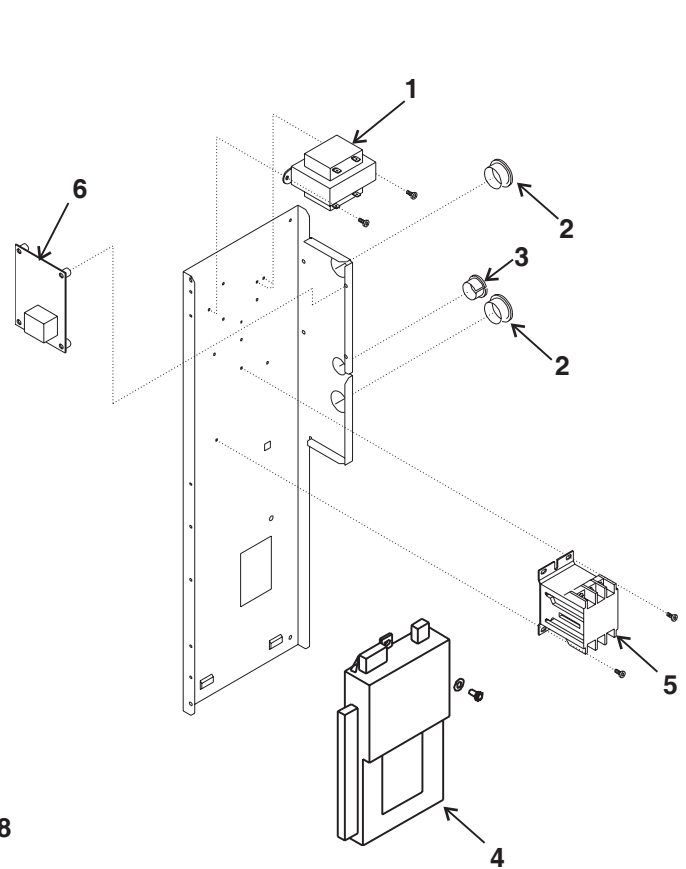
CME1356 and CME1656 Service Parts

Electrical

Single Phase



Three Phase



Single Phase

Item Number	Part Number	Description
1	A37217-001	Transformer
2	12-1213-11	Snap bushing
3	12-1213-10	Snap bushing
4	03-1531-01	Screw
5	18-1903-46	60 Hz potential relay
	18-1903-56	50 Hz potential relay
6	18-1902-56	Run capacitor
7	18-1901-27	60 Hz start capacitor
	18-1901-57	50 Hz start capacitor
8	A37125-001	Strap
9	12-2838-23	Controller Kit
10	12-2469-01	Single phase contactor
11	11-0531-22	Purge valve timer
12	18-8840-01	PTCR
12a	18-8840-02	PTCR Bracket

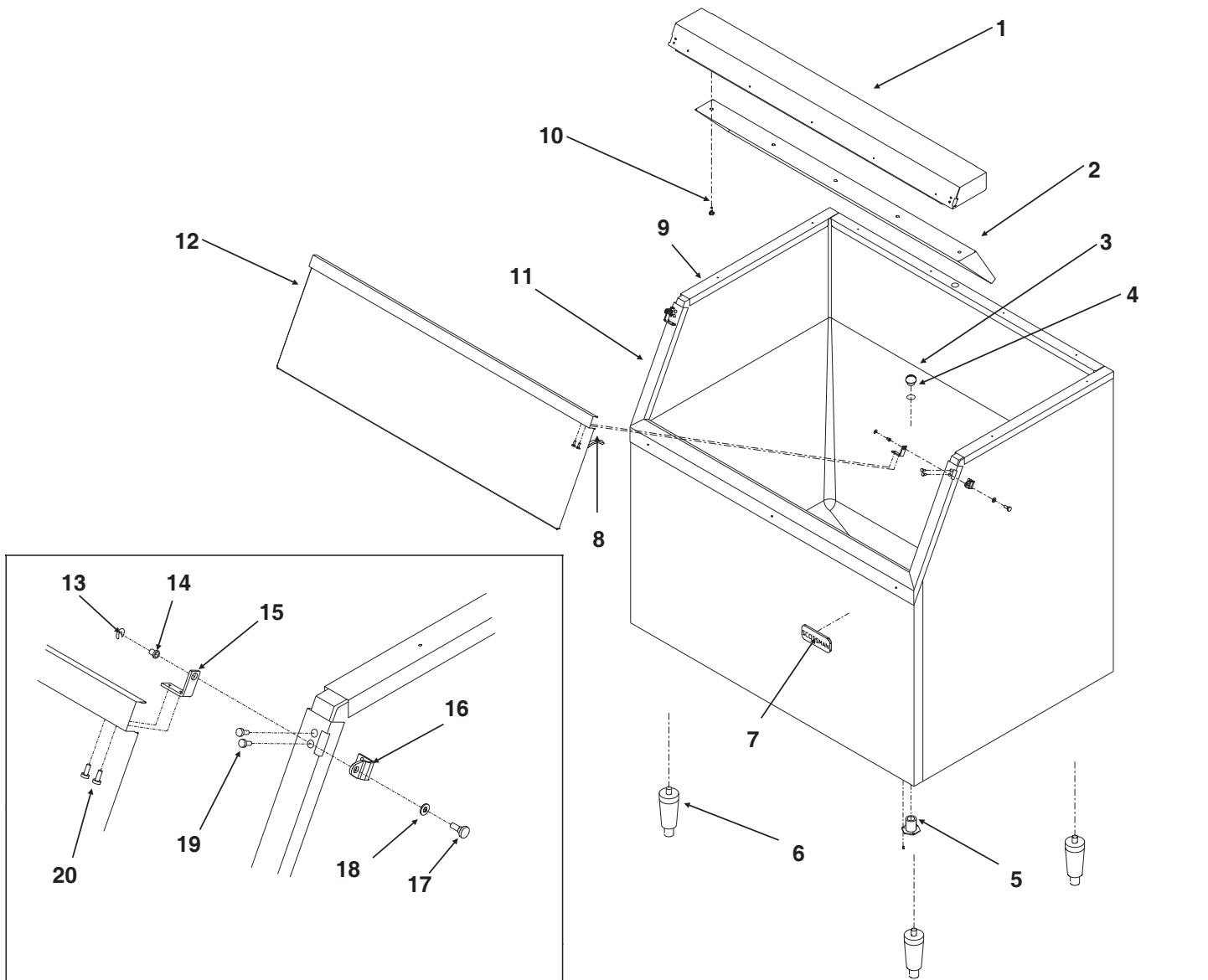
Three Phase

Item Number	Part Number	Description
1	A37217-001	Transformer
2	12-1213-11	Snap bushing
3	12-1213-10	Snap bushing
4	12-2838-23	Controller
5	12-2533-01	Three phase contactor
6	11-0531-22	Purge valve timer

Item Number	Part Number	Description
Not Shown	11-0521-21	Bin thermostat
	02-3740-01	Thermostat bracket
	03-1675-03	3 pronged knob
	12-2701-01	Bin thermo harness
	12-2663-01	Lo voltage harness, A-C
	12-2659-01	Hi voltage harness, A-C
	12-2679-01	Relay, -6 B thru F
	12-2686-01	Fuse, -6 B thru F
	12-2639-02	Transformer, -6 B, thru F
	12-2798-01	Hi volt harness, -6 B thru F
	12-2738-01	Lo volt harness, -6 B thru C
	12-2792-01	Lo volt harness, -6 D thru F
	D thru F series:	
12-2791-01	Lo voltage harness, 60 Hz	
12-2796-01	Hi voltage harness, 60 Hz	

CME1356 and CME1656 Service Parts

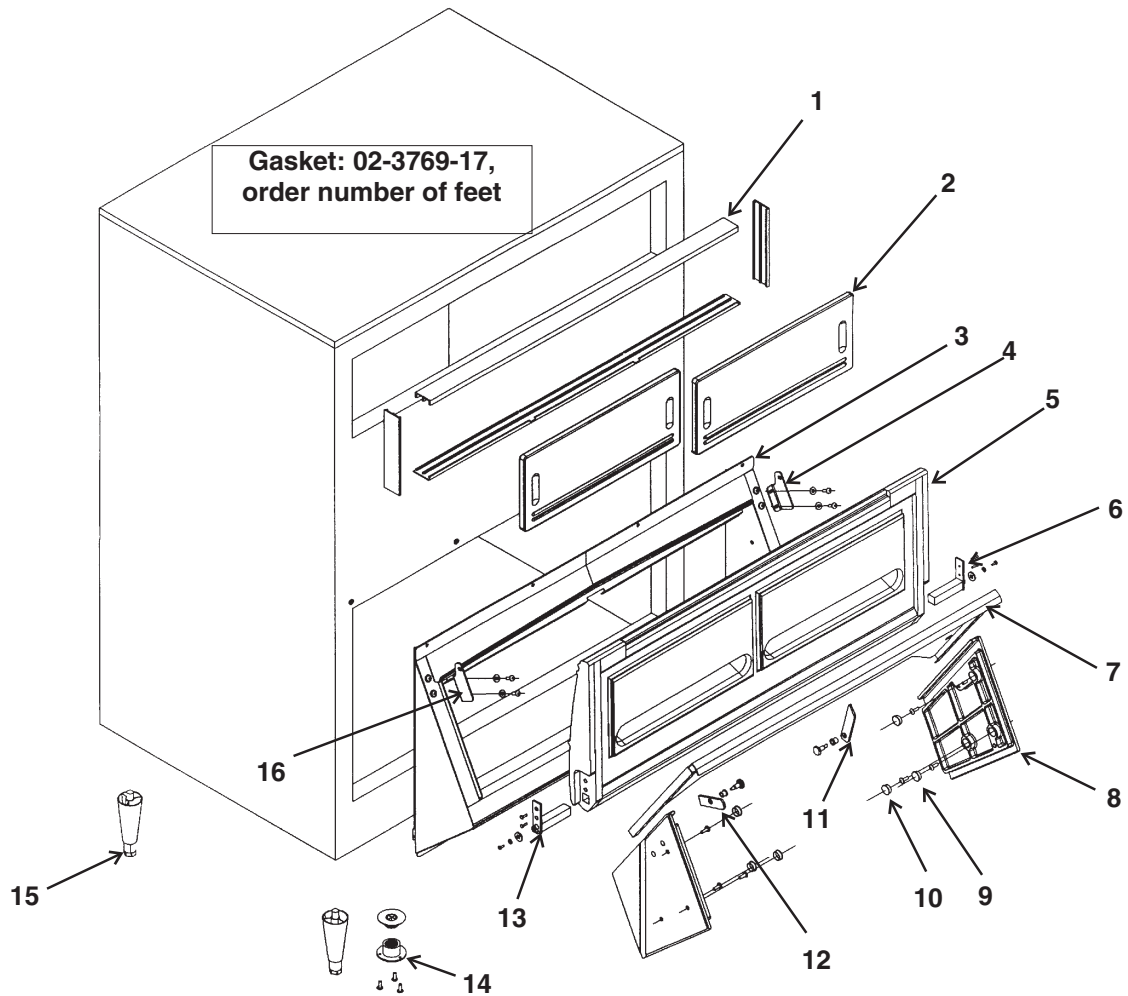
BH900 Ice Storage Bin



ITEM NUMBER	PARTS NUMBER	DESCRIPTION
1	A35322-020	Canopy Assembly
2	A35152-001	Ice Baffle
3	02-2809-01	Drain Top
4	13-0617-11	O-ring
5	02-3201-01	Drain casting
6	KLP2E Leg Kit, Black	
7	15-0808-03	Emblem
8	13-0595-00	Door gasket (order 7 units)
9	19-0503-04	Bin gasket (order per foot)
10	03-0727-11	Baffle screw
11	A35275-001	Door frame assy. except C
	A37641-021	C series door frame
12	A35323-020	Door with gasket - BH900
13	03-1539-09	"E" ring
14	02-2380-01	Hinge bushing
15	02-3195-01	Door hinge
16	02-3196-01	Bin hinge
17	02-2806-01	Shoulder screw
18	02-2380-02	Spacer
19	03-1403-29	Screw 10-24
20	03-1403-24	Screw 10-24

CME1356 and CME1656 Service Parts

BH1356 Ice Storage Bin

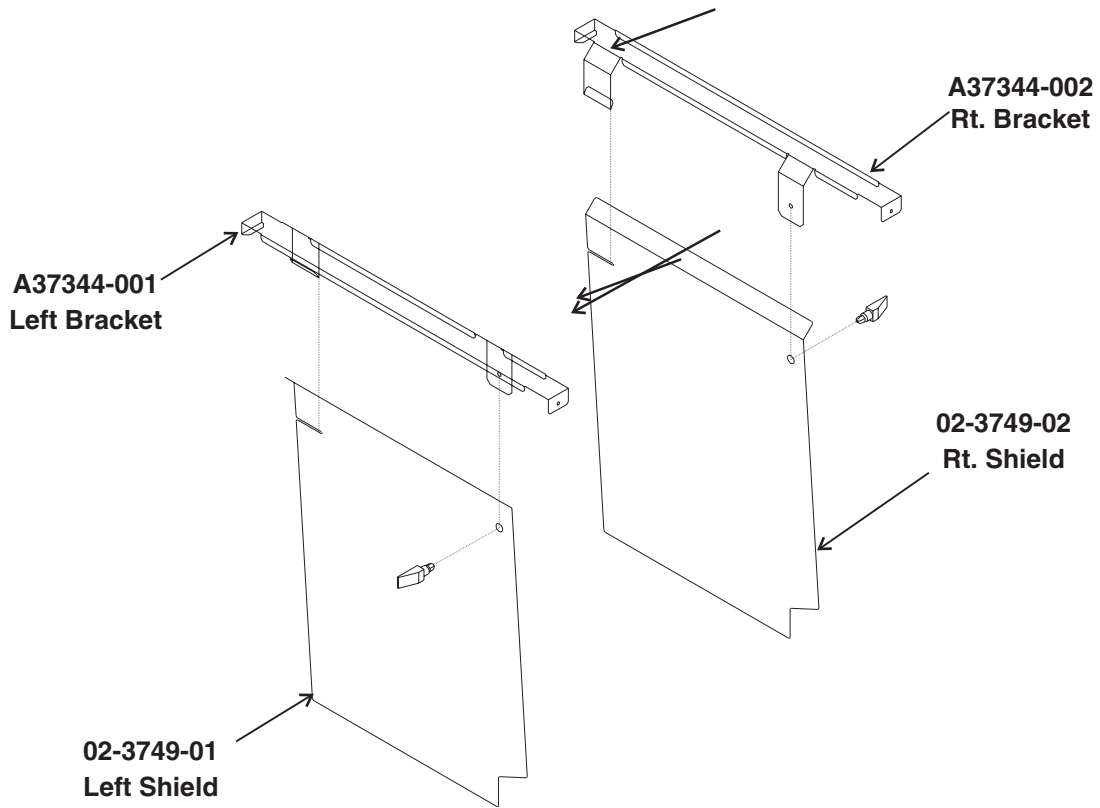


Item Number	Part Number	Description
1	02-3769-02	Track
2	02-3769-16	Window
3	02-3769-04	Lower frame assembly
4	02-3769-08	Left and right hinges
5	02-3769-05	Door with door hinges
6	02-3769-07	Right hinge
7	02-3769-09	Ice gate
8	02-3769-12	End plate guide (pair)
9	02-3769-13	Screws for end plate
10	02-3769-14	Plugs for end plate
11	02-3769-10	Catch for ice gate
12	02-3769-15	Ice gate retainer
13	02-3769-06	Left hinge
14	02-3769-01	Plastic drain
15	KLP2S	Legs

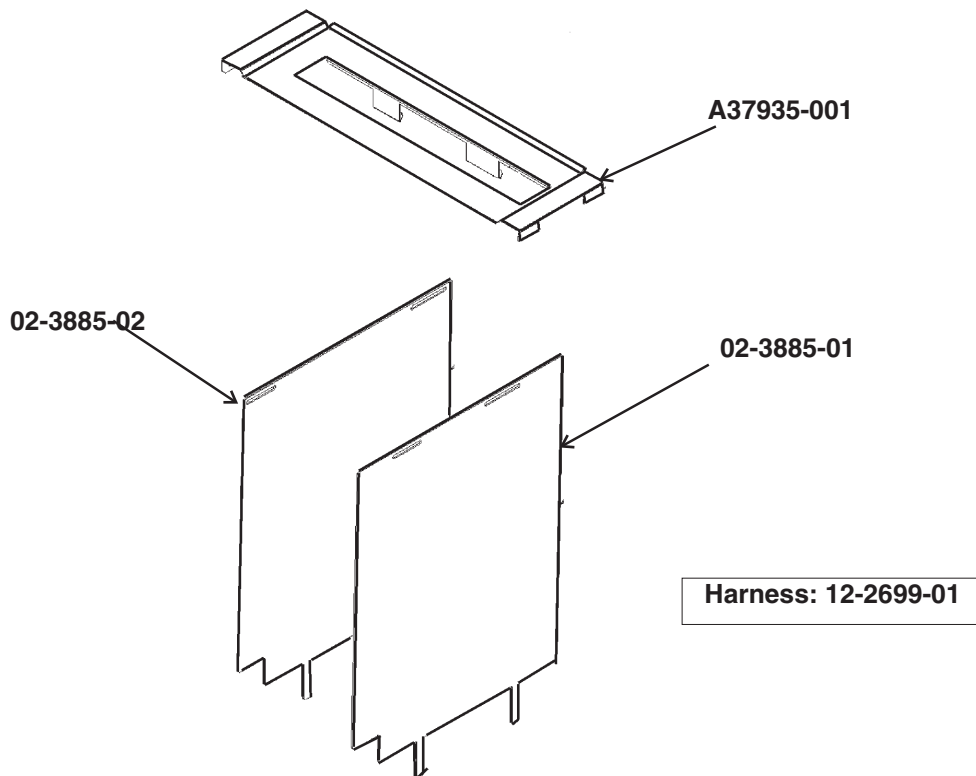
CME1356 and CME1656 Service Parts

Kit Parts

Stacking Kit - KSCME6-LG



Stacking Kit KSCME6-LG-B



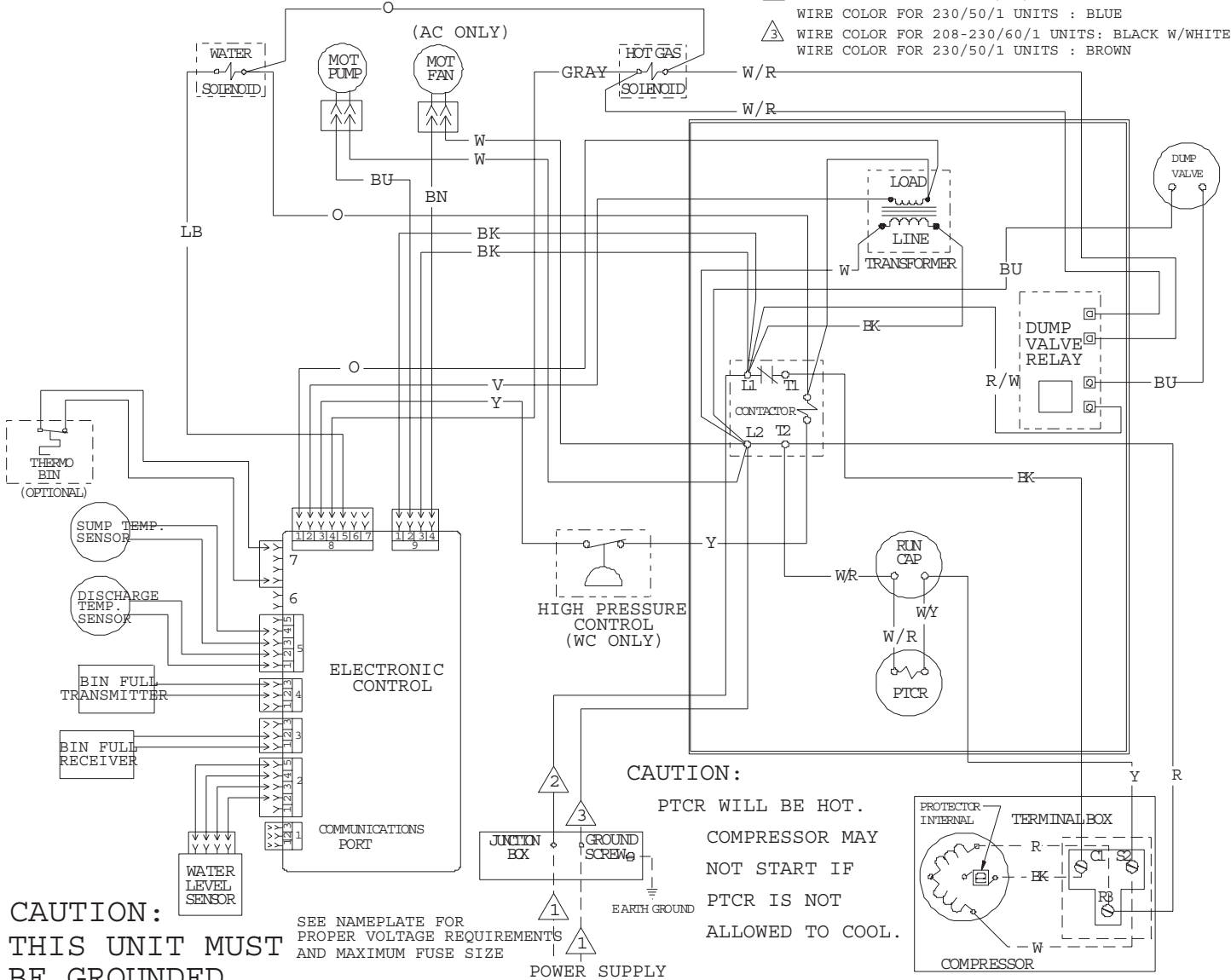
CME1356 and CME1656 Service Parts

Single Phase 60 Hz Wiring Diagram, D - F Series

17-2771-01

USE COPPER CONDUCTORS ONLY

- ① DASHED LINES INDICATE FIELD WIRING WHICH MUST BE INSTALLED IN ACCORDANCE WITH THE NATIONAL ELECTRICAL CODE AND ALL STATE AND LOCAL CODES.
- ② WIRE COLOR FOR 208-230/60/1 UNITS: BLACK
WIRE COLOR FOR 230/50/1 UNITS : BLUE
- ③ WIRE COLOR FOR 208-230/60/1 UNITS: BLACK W/WHITE STRIPE
WIRE COLOR FOR 230/50/1 UNITS : BROWN



CAUTION:
THIS UNIT MUST BE GROUNDED.

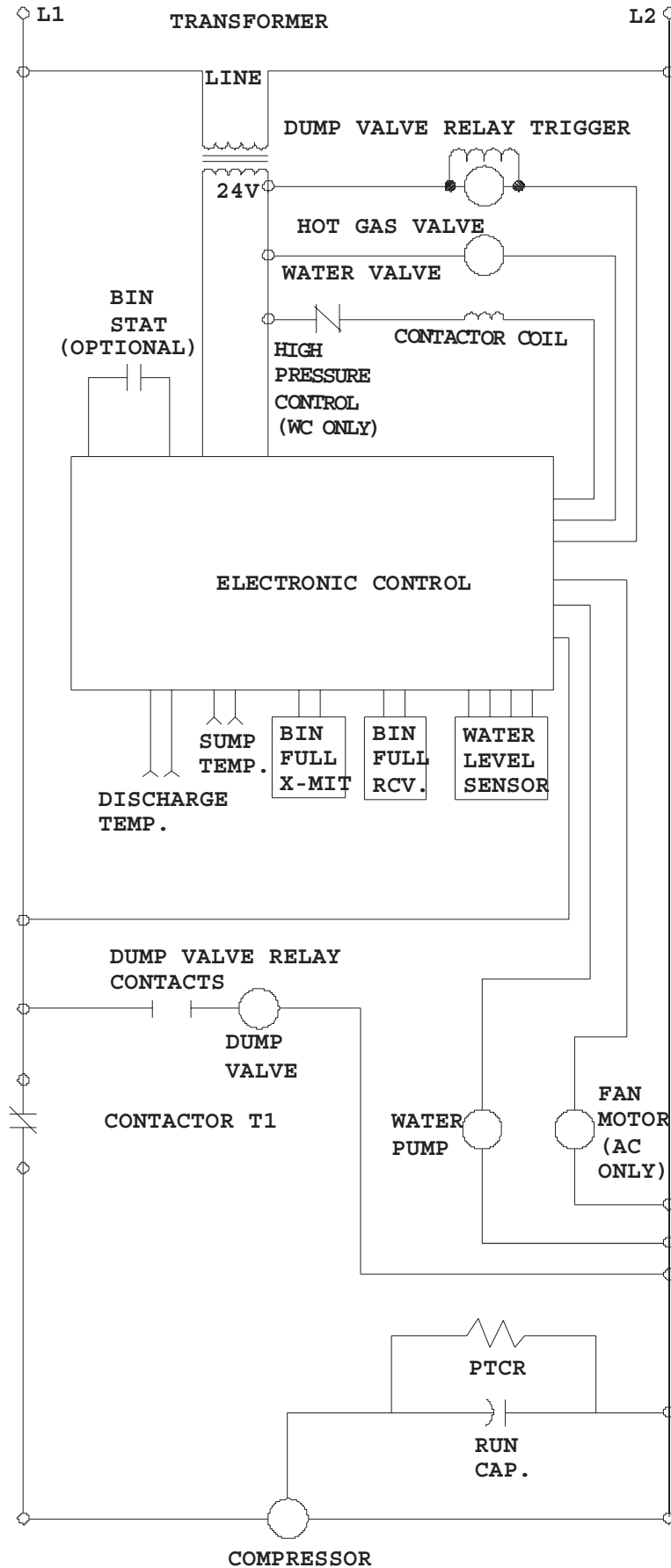
SEE NAMEPLATE FOR PROPER VOLTAGE REQUIREMENTS AND MAXIMUM FUSE SIZE

CAUTION:
PTCR WILL BE HOT.
COMPRESSOR MAY NOT START IF PTCR IS NOT ALLOWED TO COOL.

MORE THAN ONE DISCONNECT MEANS MAY BE REQUIRED TO DISCONNECT ALL POWER TO THIS UNIT.

CME1356 and CME1656 Service Parts

Single Phase Schematic Diagram, D - F Series



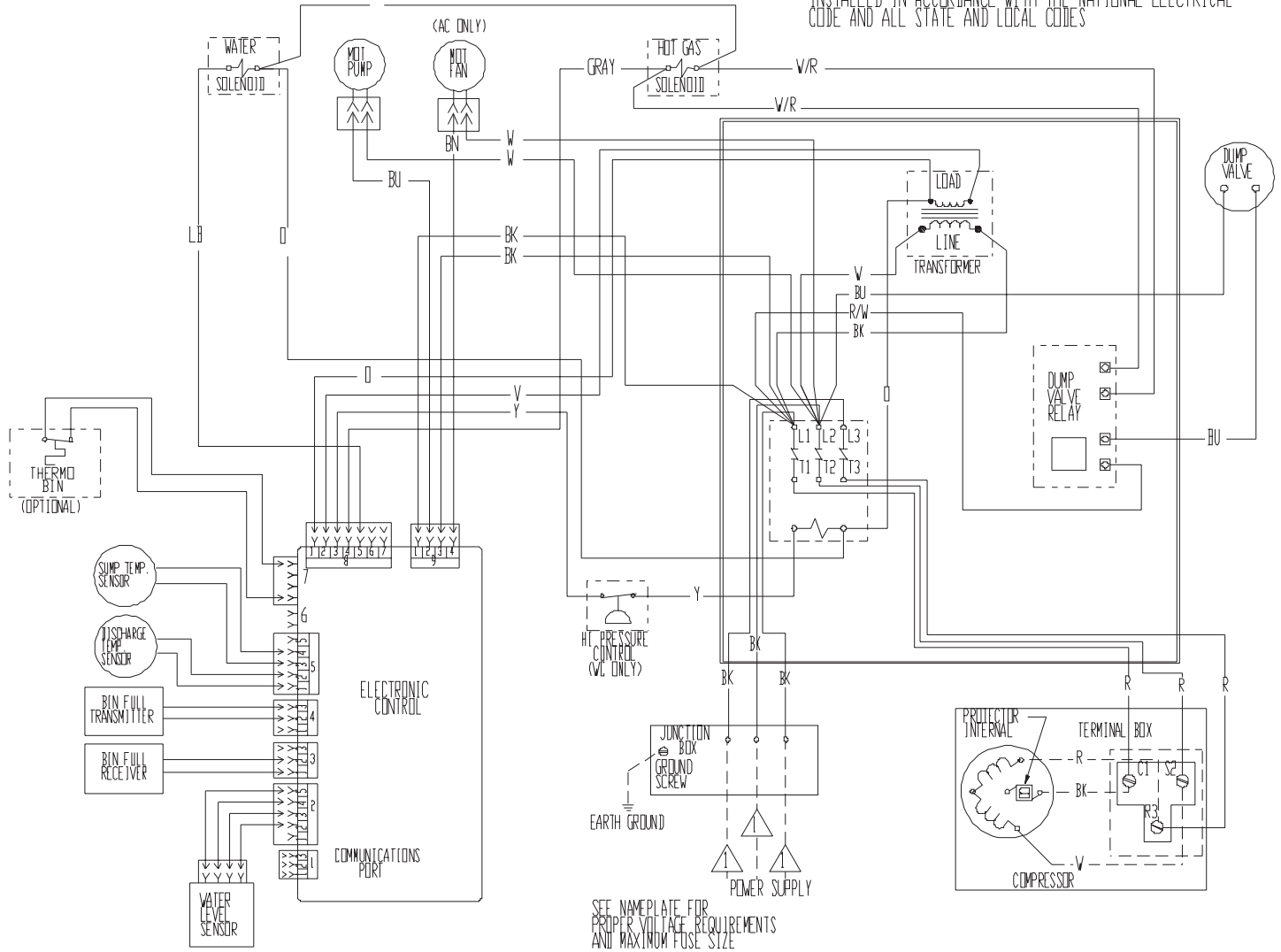
CME1356 and CME1656 Service Parts

Three Phase Wiring Diagram, D - F Series

17-2820-01

USE COPPER CONDUCTORS ONLY

△ DASHED LINES INDICATE FIELD WIRING WHICH MUST BE INSTALLED IN ACCORDANCE WITH THE NATIONAL ELECTRICAL CODE AND ALL STATE AND LOCAL CODES



THIS UNIT MUST BE GROUNDED.

CAUTION: MORE THAN ONE DISCONNECT MEANS MAY BE REQUIRED TO DISCONNECT ALL POWER TO THIS UNIT.

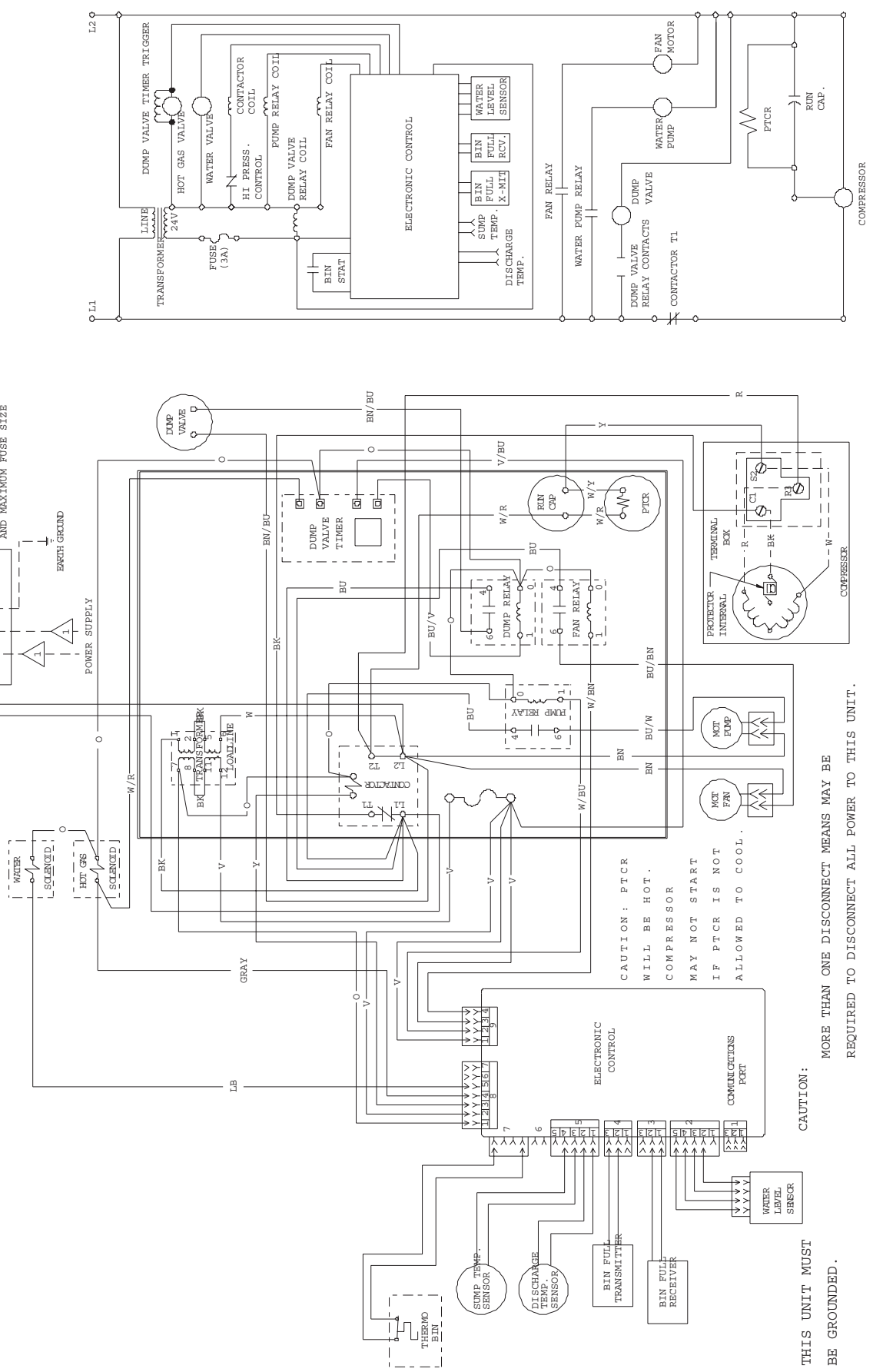
CME1356 and CME1656 Service Parts

Single Phase 50 Hz Air Cooled Wiring Diagram, D - F Series

△ DASHED LINES INDICATE FIELD WIRING WHICH MUST BE INSTALLED IN ACCORDANCE WITH THE NATIONAL ELECTRICAL CODE AND ALL STATE AND LOCAL CODES.

USE COPPER CONDUCTORS ONLY

17-2775-01



THIS UNIT MUST BE GROUNDED.

CAUTION: MORE THAN ONE DISCONNECT MEANS MAY BE REQUIRED TO DISCONNECT ALL POWER TO THIS UNIT.

CME1356 and CME1656 Service Parts

Single Phase, 50 Hz Water Cooled Wiring Diagram, D - F Series

▲ DASHED LINES INDICATE FIELD WIRING WHICH MUST BE INSTALLED IN ACCORDANCE WITH THE NATIONAL ELECTRICAL CODE AND ALL STATE AND LOCAL CODES.

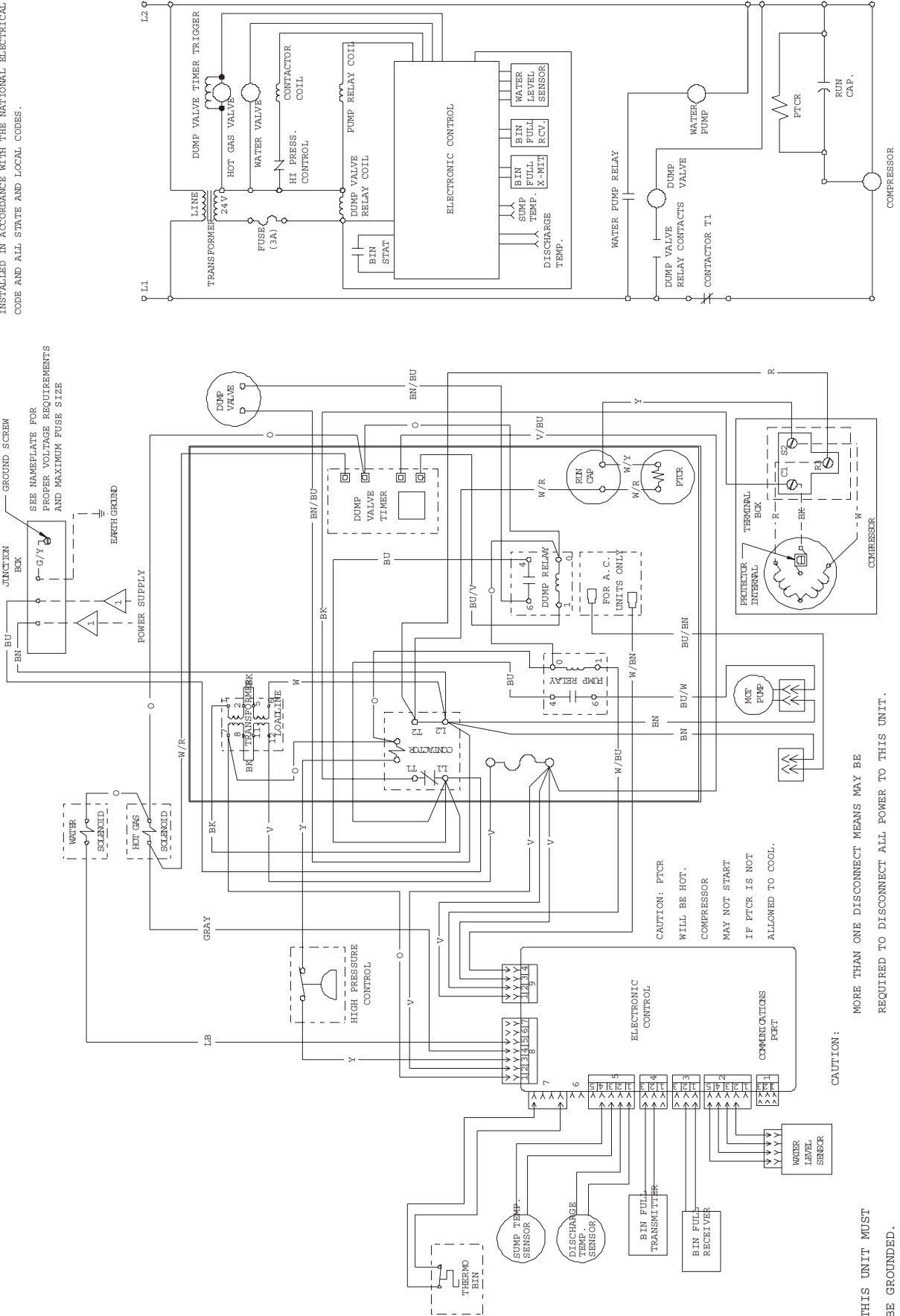
▲ USE COPPER CONDUCTORS ONLY

17-2776-01

THIS UNIT MUST BE GROUNDED.

MORE THAN ONE DISCONNECT MEANS MAY BE REQUIRED TO DISCONNECT ALL POWER TO THIS UNIT.

CAUTION:



CME1356 and CME1656 Service Parts

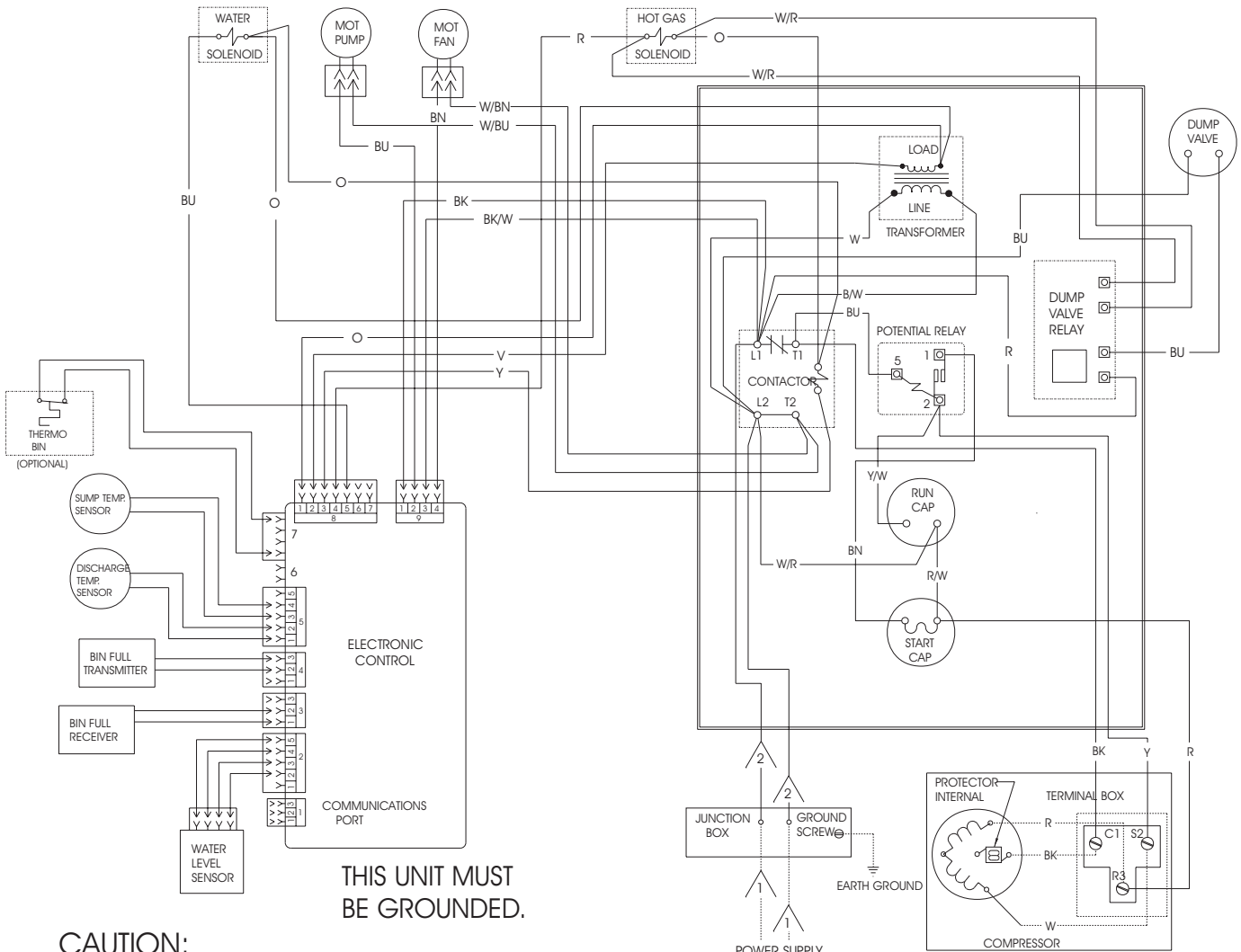
Air Cooled Single Phase Wiring Diagram, A - C

17-2502-01

USE COPPER CONDUCTORS ONLY

⚠️ DASHED LINES INDICATE FIELD WIRING WHICH MUST BE INSTALLED IN ACCORDANCE WITH THE NATIONAL ELECTRICAL CODE AND ALL STATE AND LOCAL CODES.

⚠️ WIRE COLOR FOR 208-230/60/1 UNITS: BLACK
WIRE COLOR FOR 230/50/1 UNITS : BROWN



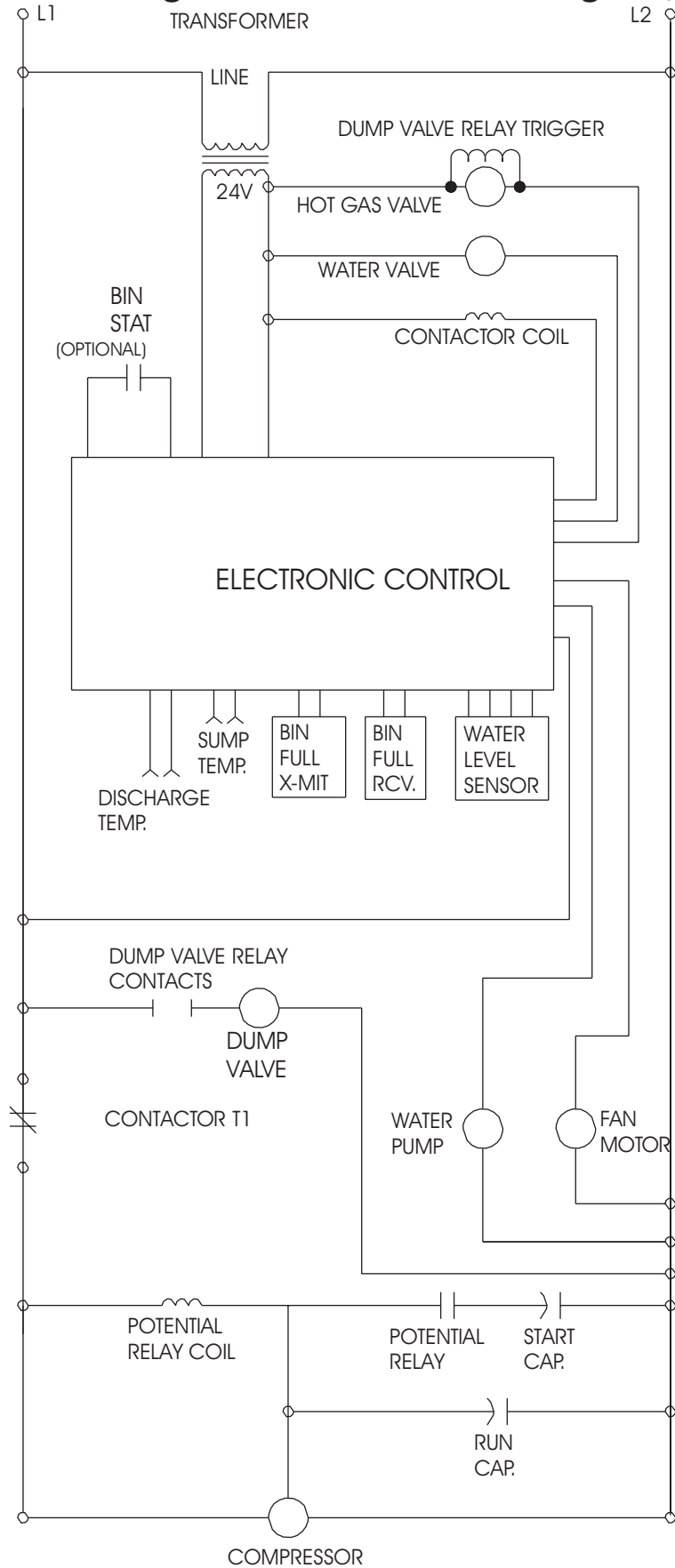
THIS UNIT MUST BE GROUNDED.

CAUTION:
MORE THAN ONE DISCONNECT MEANS MAY BE REQUIRED TO DISCONNECT ALL POWER TO THIS UNIT.

POWER SUPPLY
SEE NAMEPLATE FOR PROPER VOLTAGE REQUIREMENTS AND MAXIMUM FUSE SIZE

CME1356 and CME1656 Service Parts

Air Cooled Single Phase Schematic Diagram, A - C

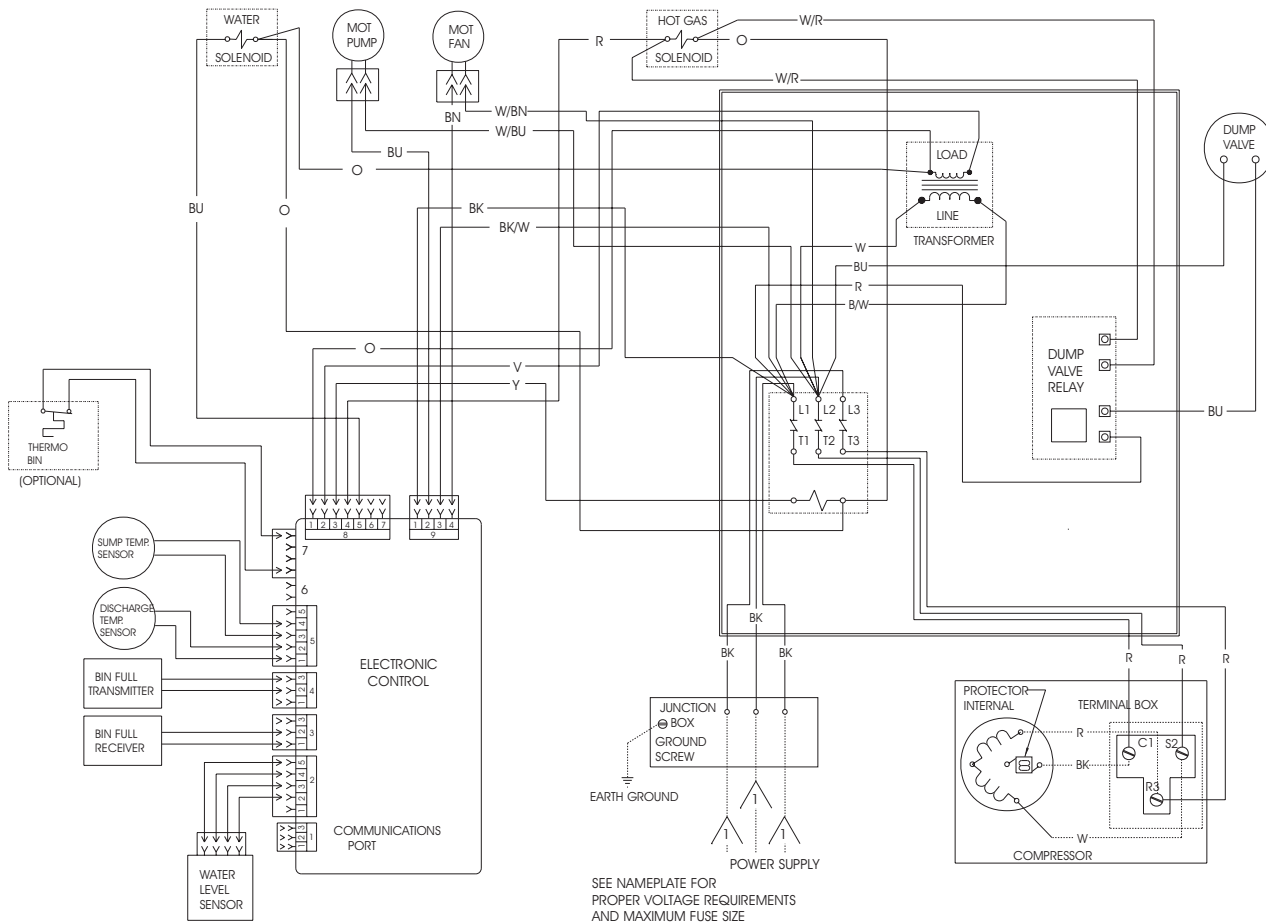


CME1356 and CME1656 Service Parts

Air Cooled Three Phase Wiring Diagram, A - C

17-2511-03

USE COPPER CONDUCTORS ONLY  DASHED LINES INDICATE FIELD WIRING WHICH MUST BE INSTALLED IN ACCORDANCE WITH THE NATIONAL ELECTRICAL CODE AND ALL STATE AND LOCAL CODES.



SEE NAMEPLATE FOR PROPER VOLTAGE REQUIREMENTS AND MAXIMUM FUSE SIZE

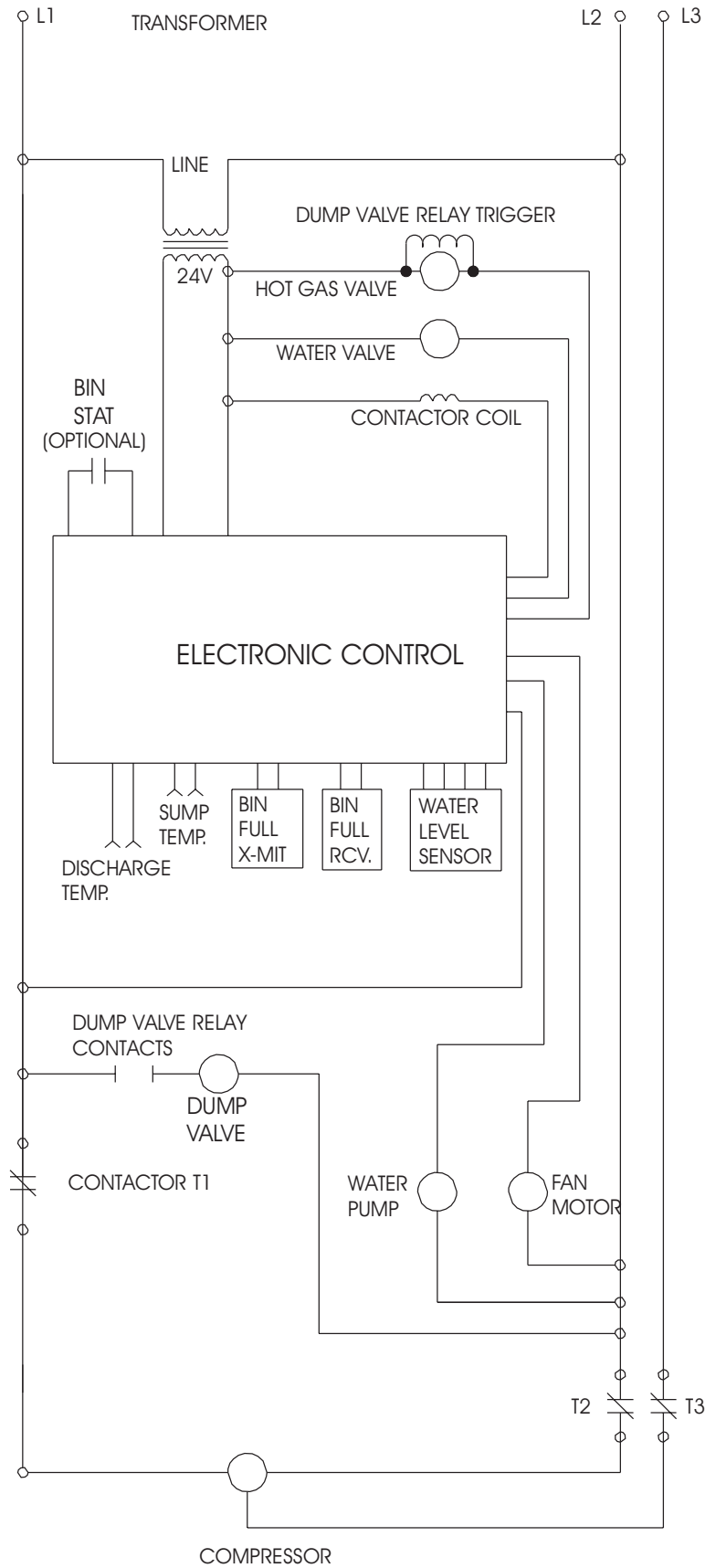
CAUTION:

THIS UNIT MUST BE GROUNDED.

MORE THAN ONE DISCONNECT MEANS MAY BE REQUIRED TO DISCONNECT ALL POWER TO THIS UNIT.

CME1356 and CME1656 Service Parts

Air Cooled Three Phase Schematic Diagram



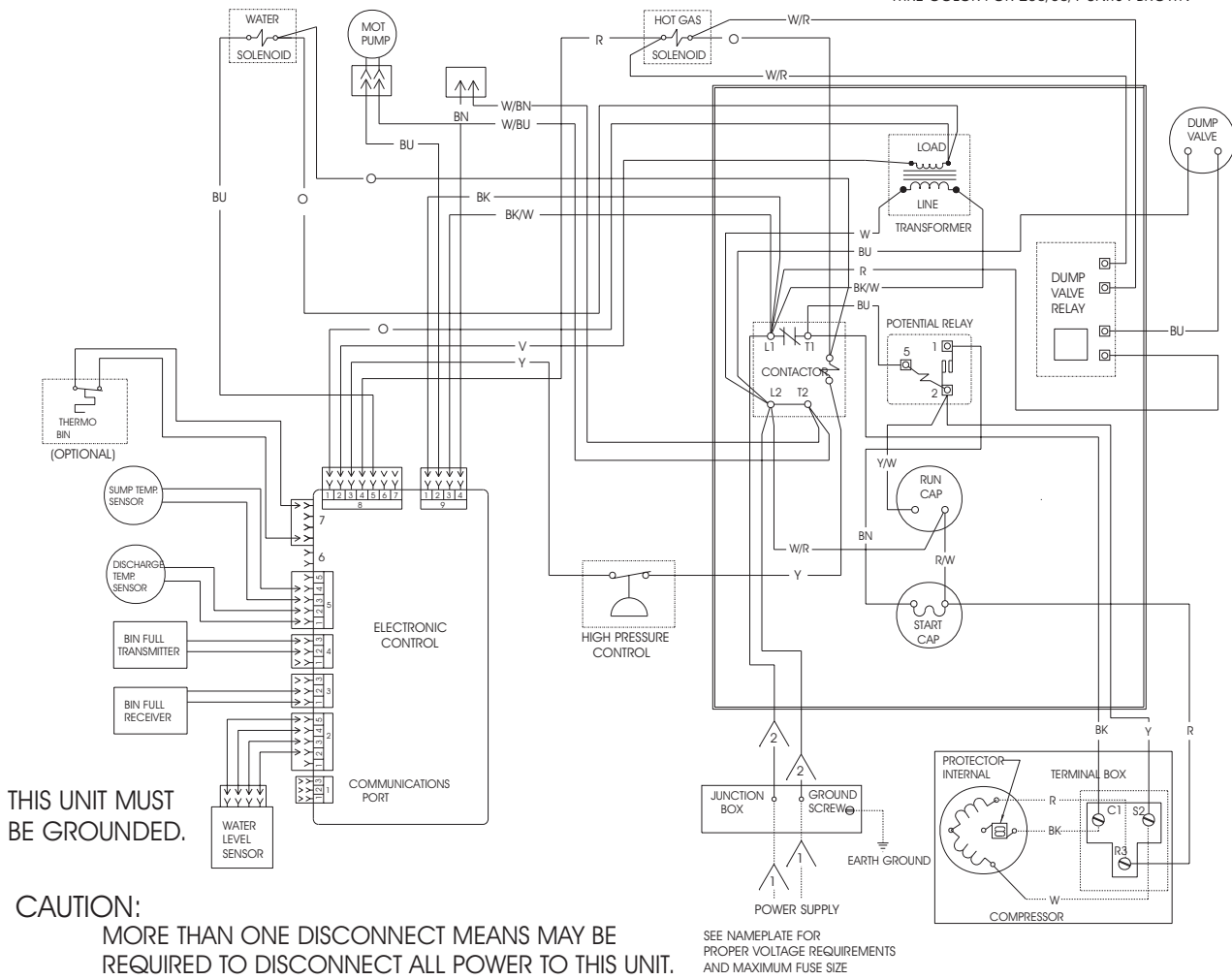
CME1356 and CME1656 Service Parts

Water Cooled Single Phase Wiring Diagram, A - C

17-2503-01

USE COPPER CONDUCTORS ONLY

- △ 1 DASHED LINES INDICATE FIELD WIRING WHICH MUST BE INSTALLED IN ACCORDANCE WITH THE NATIONAL ELECTRICAL CODE AND ALL STATE AND LOCAL CODES.
- △ 2 WIRE COLOR FOR 208-230/60/1 UNITS: BLACK
WIRE COLOR FOR 230/50/1 UNITS : BROWN



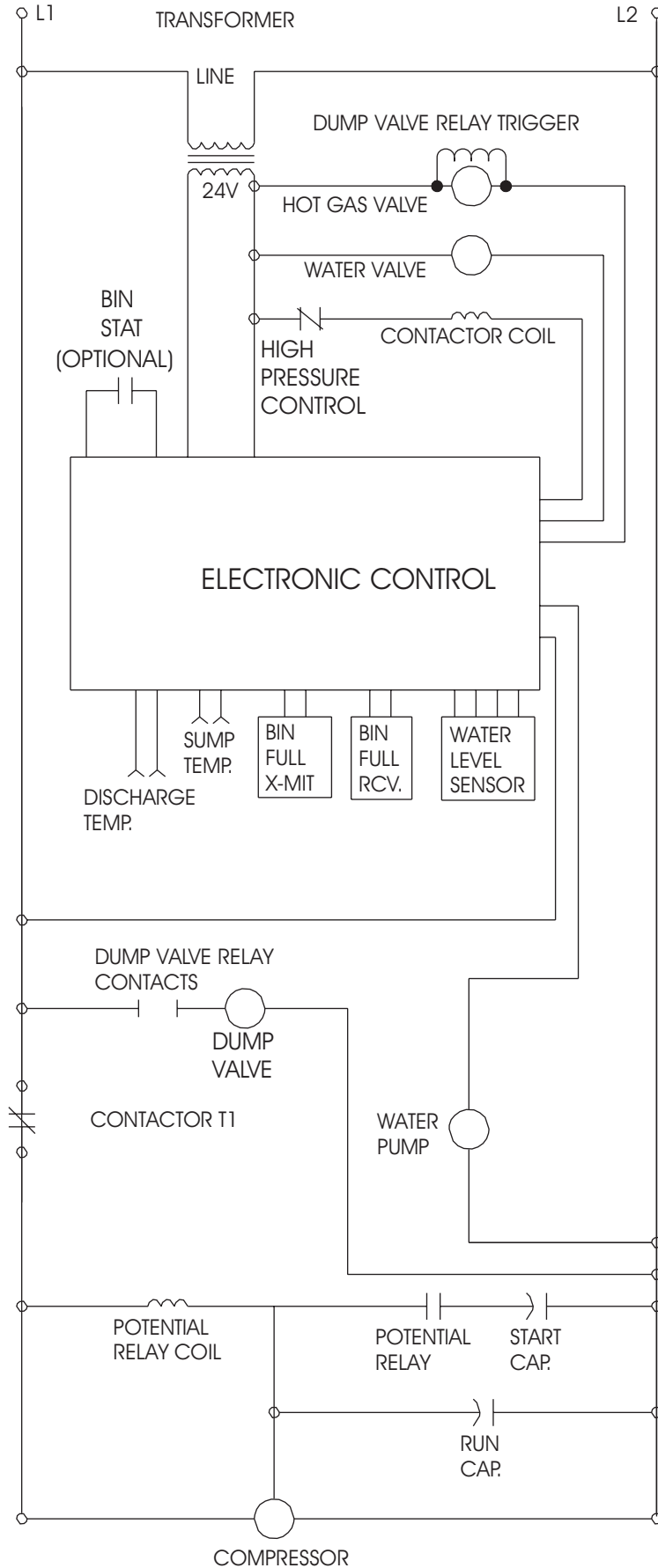
THIS UNIT MUST BE GROUNDED.

CAUTION:
MORE THAN ONE DISCONNECT MEANS MAY BE REQUIRED TO DISCONNECT ALL POWER TO THIS UNIT.

SEE NAMEPLATE FOR PROPER VOLTAGE REQUIREMENTS AND MAXIMUM FUSE SIZE

CME1356 and CME1656 Service Parts

Water Cooled Single Phase Schematic Diagram, A - C



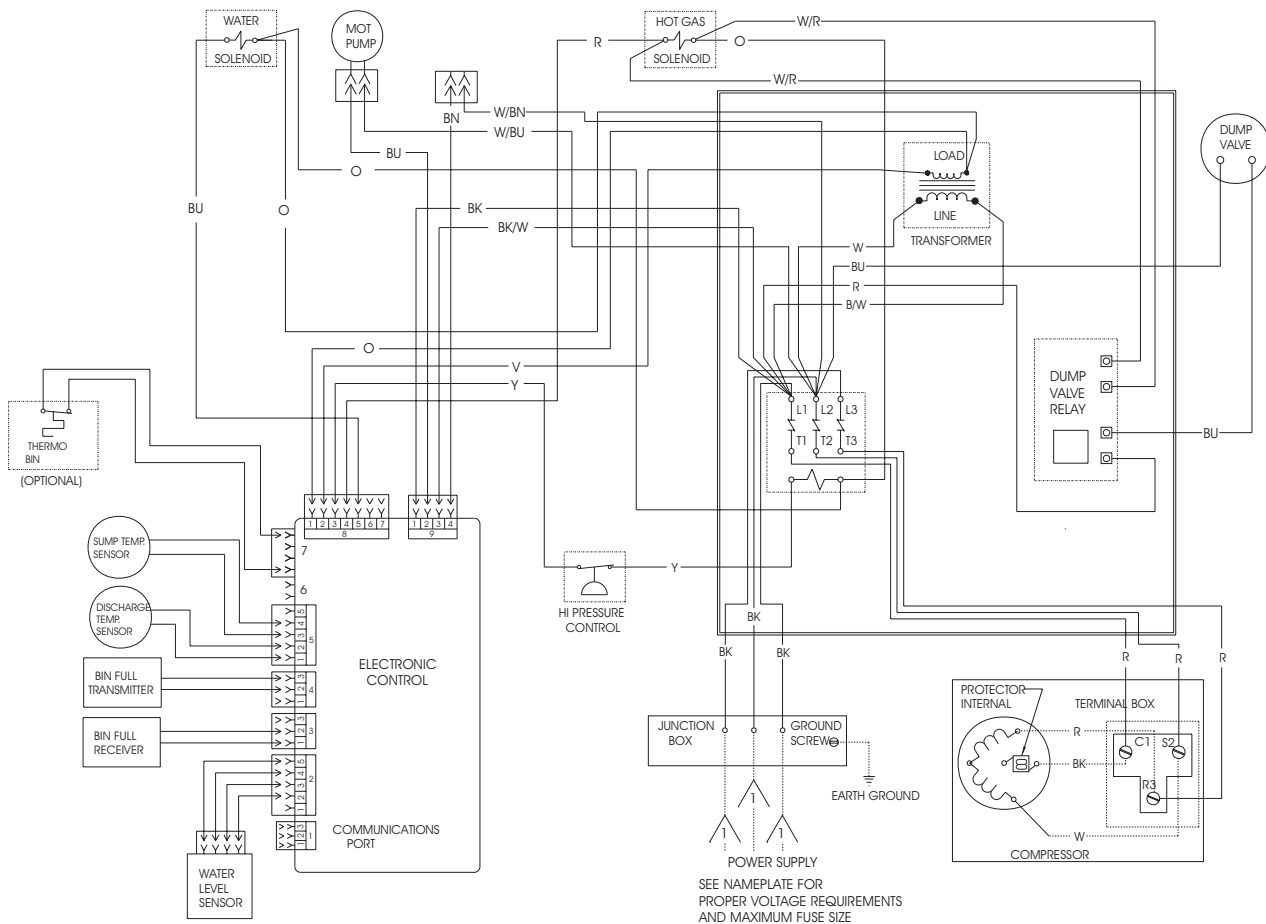
CME1356 and CME1656 Service Parts

Water Cooled Three Phase Wiring Diagram

17-2512-03

USE COPPER CONDUCTORS ONLY

⚠ DASHED LINES INDICATE FIELD WIRING WHICH MUST BE INSTALLED IN ACCORDANCE WITH THE NATIONAL ELECTRICAL CODE AND ALL STATE AND LOCAL CODES.



CAUTION:

THIS UNIT MUST BE GROUNDED.

MORE THAN ONE DISCONNECT MEANS MAY BE REQUIRED TO DISCONNECT ALL POWER TO THIS UNIT.

CME1356 and CME1656 Service Parts

Water Cooled Three Phase Schematic Diagram

