

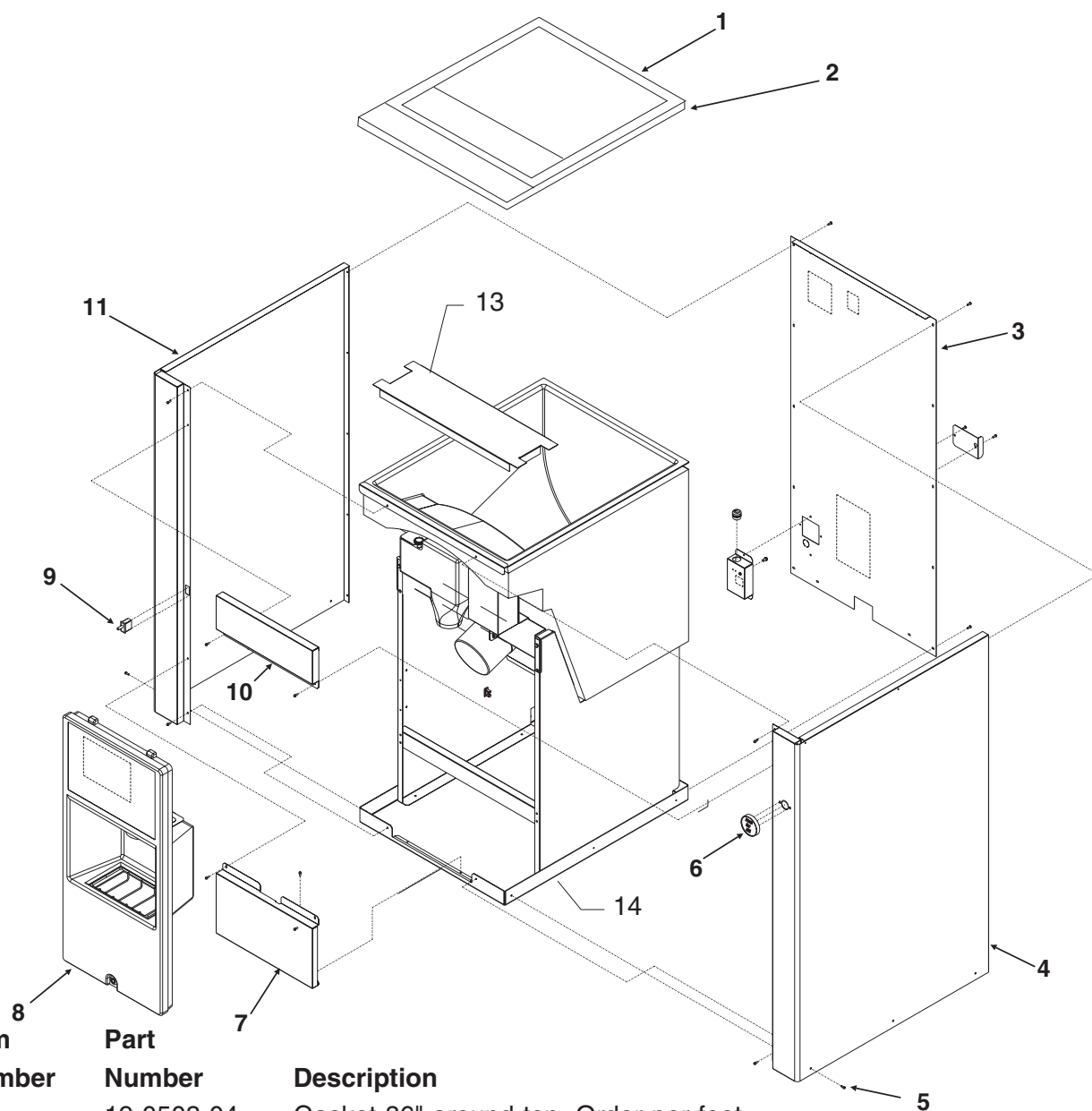
# HD156

This parts list contains the part numbers for all HD156 Cube Ice Dispensers.  
Be sure to check the complete model number before ordering the part.

## Table of Contents

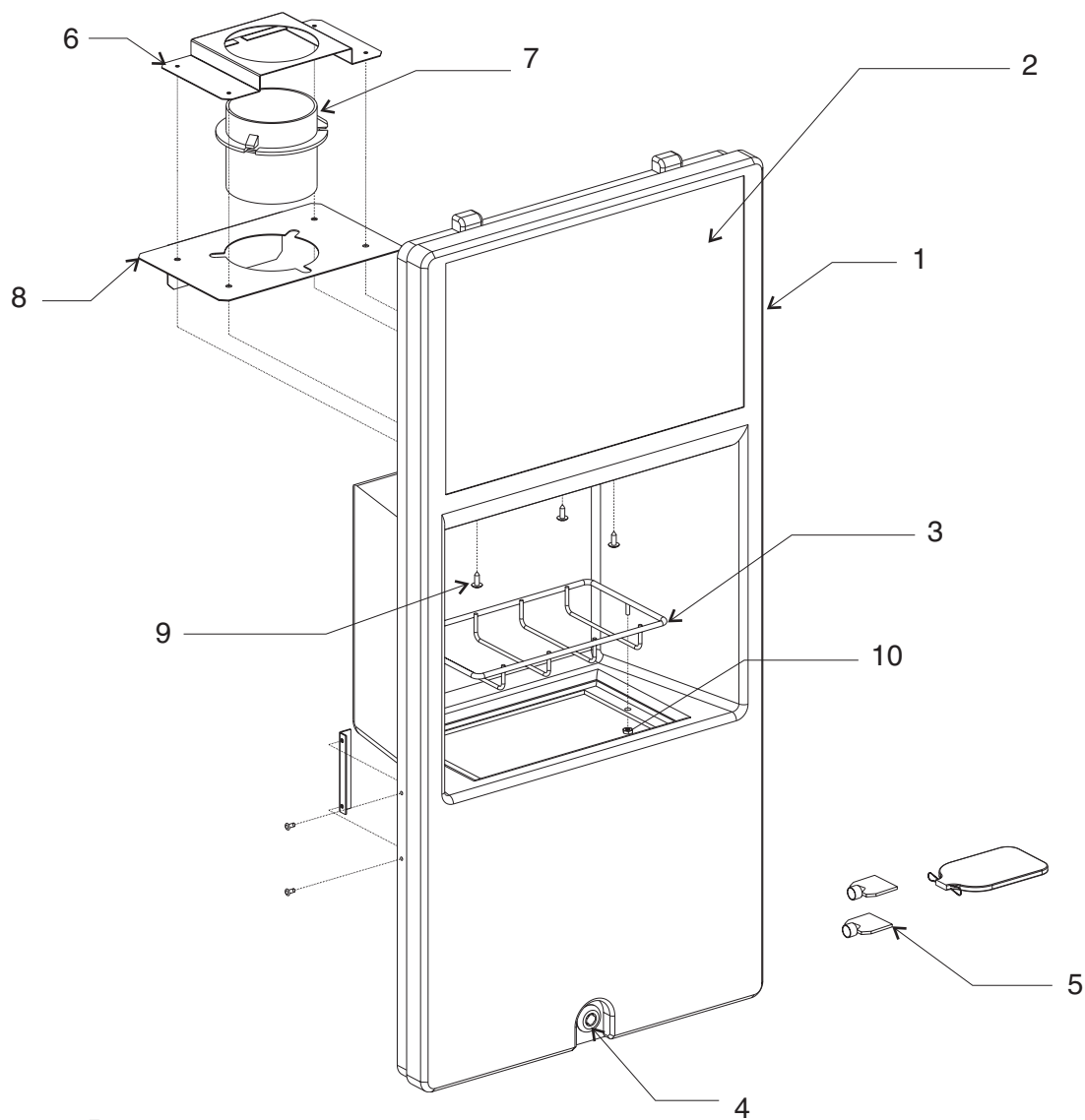
Cabinet Parts .....	Page 2
Sink Panel .....	Page 3
Bin Parts .....	Page 4
Dispensing Mechanism .....	Page 5
Door and Solenoid .....	Page 6
Wiring Diagram 115/60/1 .....	Page 7
Wiring Diagram 230/50/1 .....	Page 8

# HD156 Cabinet Parts



Item Number	Part Number	Description
1	19-0503-04	Gasket 86" around top. Order per foot.
2	02-3922-01	Bin cover
3	A38080-001	Back panel
4	A38078-001	Right side panel, stainless steel
5	03-1638-03	Screw
6	02-3773-01	Vend switch
7	A38107-001	Bottom panel
8	A38112-001	Sink assembly
9	12-1276-01	Interlock switch
10	A38084-001	Top front panel, stainless steel
11	A38138-001	Left side panel, stainless steel
12	12-2333-01	Step Down Transformer for 50 Hz (not shown)
13	A38156-001	Brace
14	A38077-001	Base

# HD156 Sink Panel

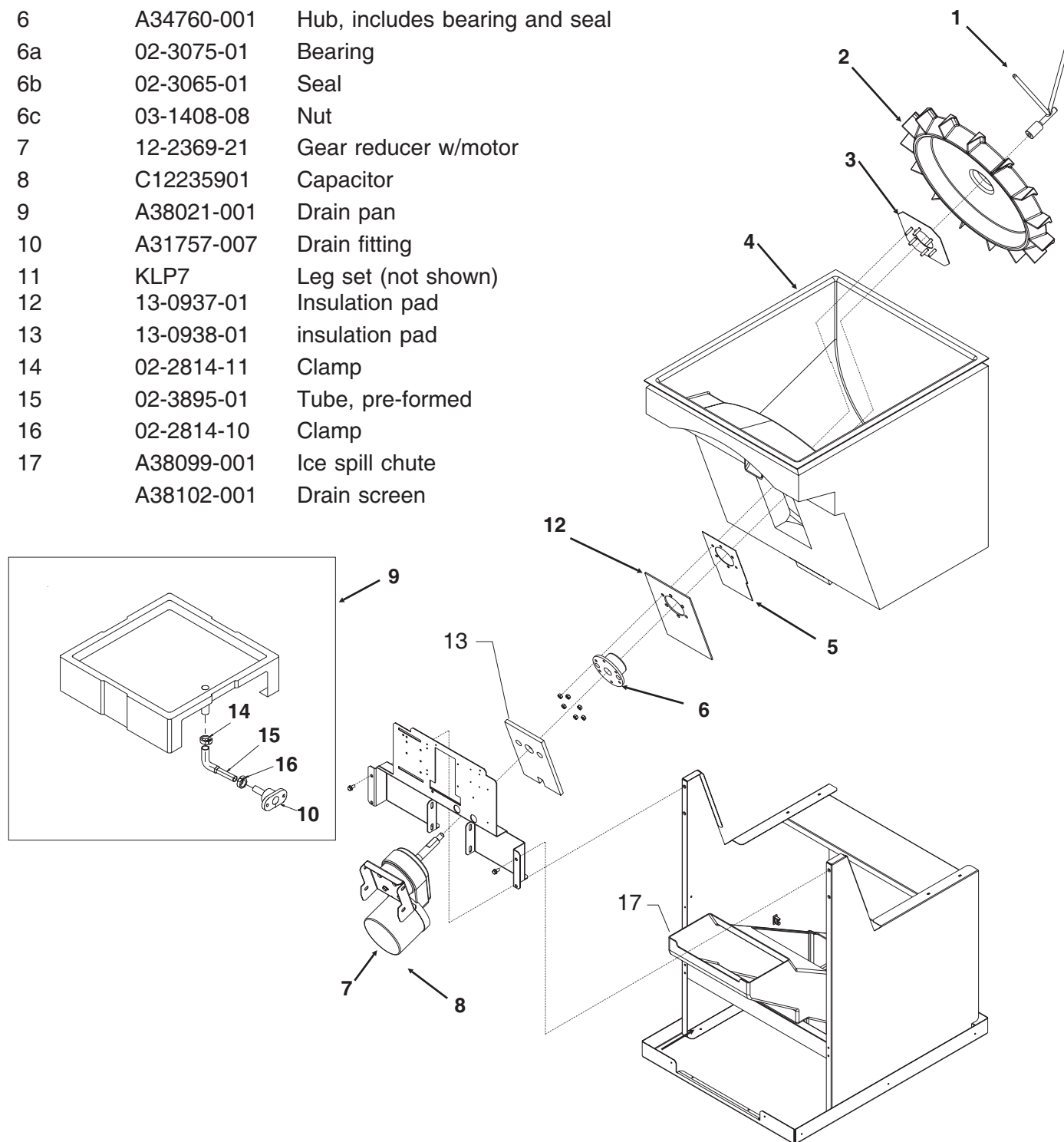


Item Number	Part Number	Description
1	02-3923-01	Sink & panel
2	17-2913-01	Graphic
3	02-3924-01	Grill
4	A35618-001	Lock & Key
5	02-3263-01	Key only
6	A38082-001	Ice chute cover
7	02-3068-05	Ice chute
8	A38081-001	Ice chute support
9	03-3820-01	Screw
10	03-1406-01	Hex nut

# HD156

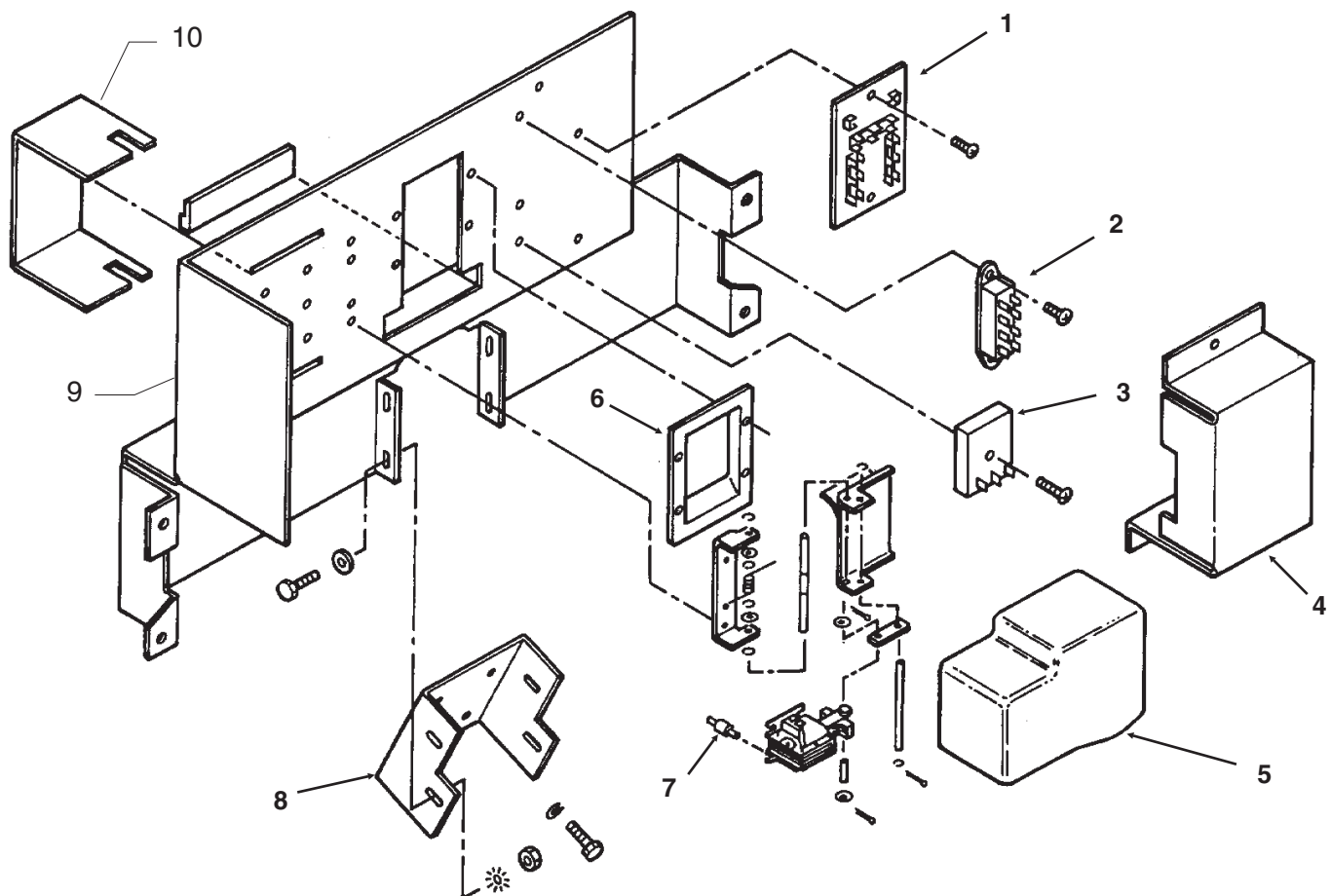
## Bin Parts

Item Number	Part Number	Description
1	02-3925-01	Sweep arm
2	02-3040-01	Rotor
3	A38145-001	Plate assembly
4	A38117-001	Bin
5	A34817-001	Gearmotor plate
6	A34760-001	Hub, includes bearing and seal
6a	02-3075-01	Bearing
6b	02-3065-01	Seal
6c	03-1408-08	Nut
7	12-2369-21	Gear reducer w/motor
8	C12235901	Capacitor
9	A38021-001	Drain pan
10	A31757-007	Drain fitting
11	KLP7	Leg set (not shown)
12	13-0937-01	Insulation pad
13	13-0938-01	insulation pad
14	02-2814-11	Clamp
15	02-3895-01	Tube, pre-formed
16	02-2814-10	Clamp
17	A38099-001	Ice spill chute
	A38102-001	Drain screen



# HD156

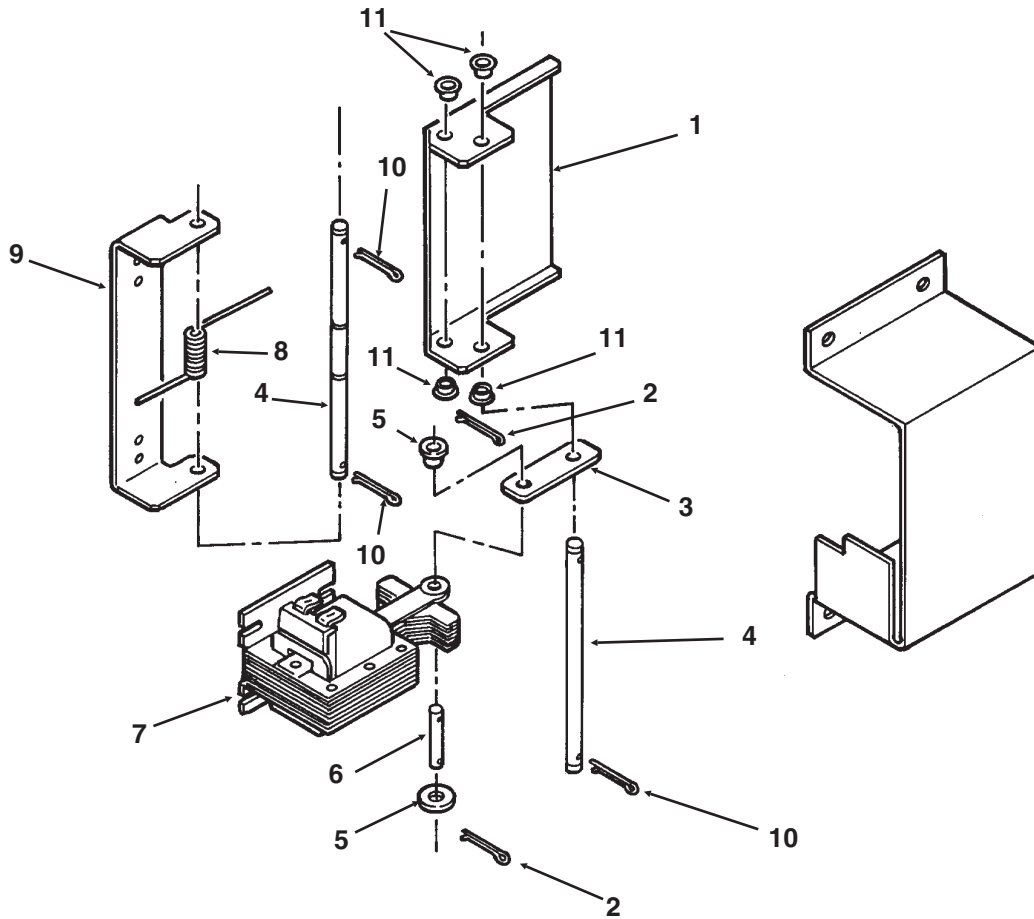
## Dispensing Mechanism



Item Number	Part Number	Description
1	18-2239-00	Terminal Board
2	12-2858-02	Control relay
3	12-2859-01	Timer - 3 seconds on every 2 hours
4	A38093-001	Cover
5	A38087-001	Solenoid cover
	03-3829-01	Thumb screws for cover
6	02-3073-01	Spout adapter
7	13-0882-01	Rubber mounts
8	A38094-001	Gear motor bracket
9	A38092-001	Control panel
10	A38091-001	Ice chute mount

# HD156

## Door and Solenoid



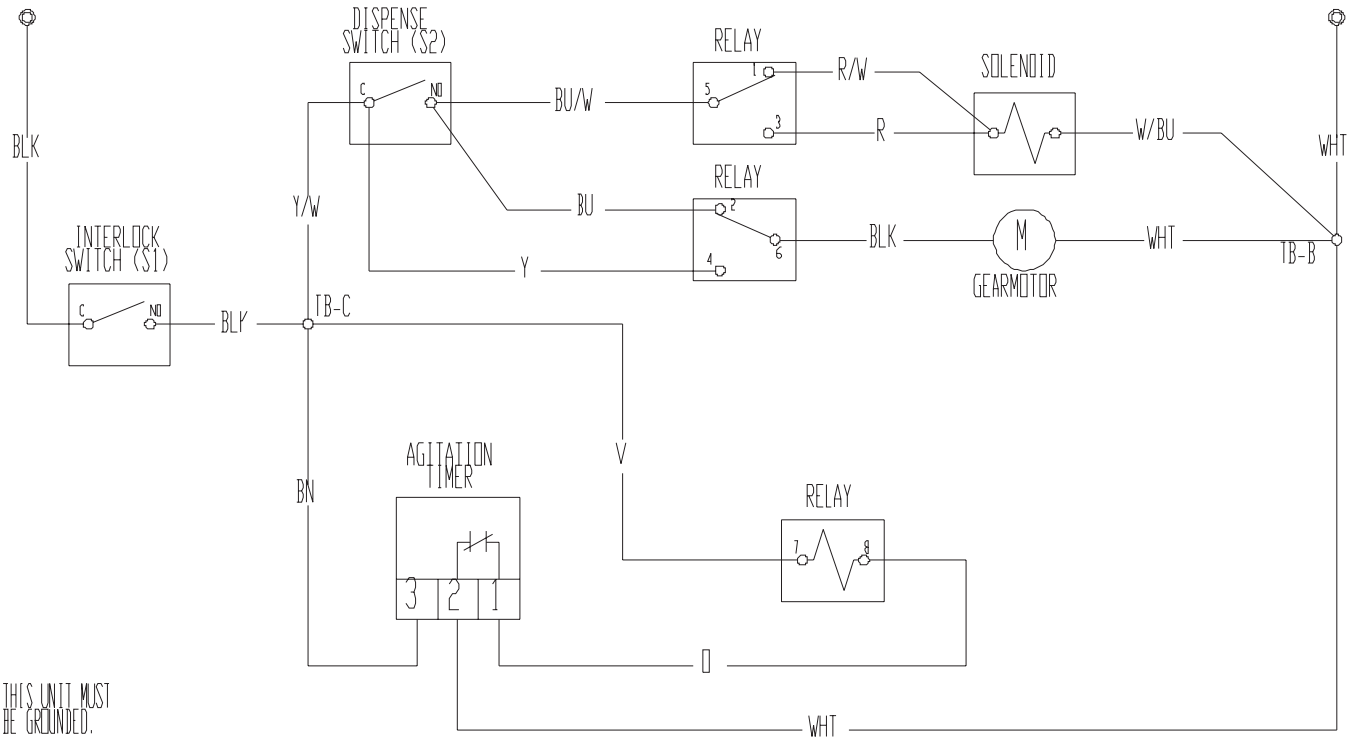
Item Number	Part Number	Description
1	A34801-001	Ice door
2	03-0396-08	Cotter pin
3	A38098-001	Solenoid link
4	02-3088-01	Long axle
5	03-1407-02	Washer
6	A32685-001	Axle, linkage
7	12-2862-01	Solenoid
8	A32690-001	Door spring
9	A34802-001	Door hinge
10	03-0396-08	Cotter pin
11	12-1213-02	Bushing

# HD156

## Wiring Diagram 115/60/1

17-2912-01

USE COPPER CONDUCTORS ONLY



THIS UNIT MUST  
BE GROUNDED.

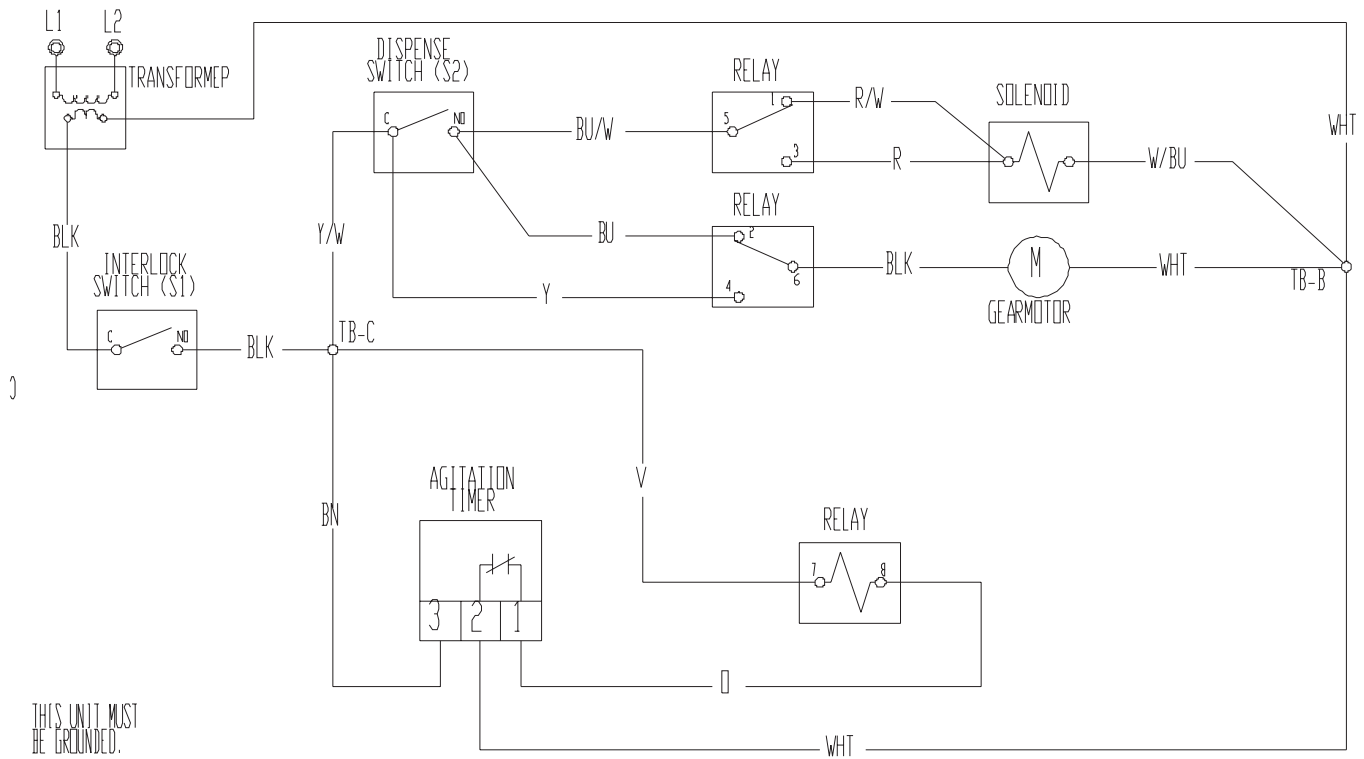
CAUTION:  
MORE THAN ONE DISCONNECT MEANS MAY BE  
REQUIRED TO DISCONNECT ALL POWER TO THIS UNIT.

# HD156

## Wiring Diagram 230/50/1

17-2917-01

USE COPPER CONDUCTORS ONLY



THIS UNIT MUST  
BE GROUNDED.

CAUTION:  
MORE THAN ONE DISCONNECT MEANS MAY BE  
REQUIRED TO DISCONNECT ALL POWER TO THIS UNIT.