



# HEAVY DUTY DRAWER STYLE FOOD WARMERS

## MODELS

SDW1

SDW2

SDW3

SDW1N

SDW2N

SDW3N

SDW1W

SDW2C

SDW3C

SDW2W

SDW2NC

SDW3NC

## Installation and Operation Instructions

2M-Z4061 Rev.C 6/09/2010



SDW3NC



**SAFETY SYMBOL**



These symbols are intended to alert the user to the presence of important operating and maintenance instructions in the manual accompanying the appliance.

**RETAIN THIS MANUAL FOR FUTURE REFERENCE**  
**NOTICE**

Using any part other than genuine Star factory supplied parts relieves the manufacturer of all liability.

Star reserves the right to change specifications and product design without notice. Such revisions do not entitle the buyer to corresponding changes, improvements, additions or replacements for previously purchased equipment.

Due to periodic changes in designs, methods, procedures, policies and regulations, the specifications contained in this sheet are subject to change without notice. While Star Manufacturing exercises good faith efforts to provide information that is accurate, we are not responsible for errors or omissions in information provided or conclusions reached as a result of using the specifications. By using the information provided, the user assumes all risks in connection with such use.

**MAINTENANCE AND REPAIRS**

Contact your local authorized service agent for service or required maintenance. Please record the model number, serial number, voltage and purchase date in the area below and have it ready when you call to ensure a faster service.

Model No. \_\_\_\_\_

Serial No. \_\_\_\_\_

Voltage \_\_\_\_\_

Purchase Date \_\_\_\_\_

**Authorized Service Agent**  
Reference the listing provided with the unit  
or  
for an updated listing go to:

**Website:** www.star-mfg.com  
**E-mail** Service@star-mfg.com  
**Telephone:** (800) 807-9054 Local (314) 781-2777

**Service Help Desk**

**Business Hours:** 8:00 am to 4:30 p.m. Central Standard Time  
**Telephone:** (800) 807-9054 Local (314) 781-2777  
**Fax:** (800) 396-2677 Local (314) 781-2714  
**E-mail** Parts@star-mfg.com  
Service@star-mfg.com  
Warranty@star-mfg.com  
**Website:** www.star-mfg.com

**Mailing Address:** Star International Holdings Inc., Company  
10 Sunnen Drive  
St. Louis, MO 63143  
U.S.A

## SPECIFICATIONS

---

### **SDW1, SDW1N, SDW1W**

Capacity:	1 Full Size Standard Food Pan (12 x 20 x 6)	
Electrical:	120 Volt, 60 Cycle, Single Phase, 475 Watts	
	NEMA 5-15P Attachment Plug	
	220/240 Volt, 50/60 Cycle, Single Phase, 403/475 Watts	
Dimensions:	CEE 7/7 Attachment Plug	
	SDW1, 1W	29 1/4" - Length x 21 13/16" - Depth x 11 1/4" - Height (74.3 cm - Length x 55.4 cm - Depth x 28.58 cm - Height)
	SDW1N	21 1/4" - Length x 29 13/16" - Depth x 11 1/4" - Height (53.98 cm - Length x 75.72 cm - Depth x 28.58 cm - Height)

---

### **SDW2, SDW2C, SDW2N, SDW2NC, SDW2W**

Capacity:	2 Full Size Standard Food Pans (12 x 20 x 6)	
Electrical:	120 Volt, 60 Cycle, Single Phase, 925 Watts	
	NEMA 5-15P Attachment Plug	
	220/240 Volt, 50/60 Cycle, Single Phase, 781/925 Watts	
Dimensions:	CEE 7/7 Attachment Plug	
	SDW2, 2C, 2W	29 1/4" - Length x 21 13/16" - Depth x 24 7/16" - Height (74.3 cm - Length x 55.4 cm - Depth x 62.07 cm - Height)
	SDW2N, 2NC	21 1/4" - Length x 29 13/16" - Depth x 24 7/16" - Height (53.98 cm - Length x 75.72 cm - Depth x 62.07 cm - Height)

---

### **SDW3,SDW3C, SDW3N, SDW3NC**

Capacity:	3 Full Size Standard Food Pans (12 x 20 x 6)	
Electrical:	120 Volt, 60 Cycle, Single Phase, 1,375 Watts	
	NEMA 5-15P Attachment Plug	
	220/240 Volt, 50/60 Cycle, Single Phase, 1,159/1,375 Watts	
Dimensions:	CEE 7/7 Attachment Plug	
	SDW3, 3C	29 1/4" - Length x 21 13/16" - Depth x 34 5/8" - Height (74.3 cm - Length x 55.4 cm - Depth x 78.94 cm - Height)
	SDW3N, 3NC	21 1/4" - Length x 29 13/16" - Depth x 34 5/8" - Height (53.98 cm - Length x 75.72 cm - Depth x 78.94 cm - Height)

---

Note: "N" versions have the pan positioned with the 20" dimension front to back.



### CAUTION

This equipment is designed and sold for commercial use only by personnel trained and experienced in its operation and is not sold for consumer use in and around the home nor for use directly by the general public in food service locations.

## INSTALLATION AND OPERATING INSTRUCTIONS



### WARNING

These models are equipped for the voltage and wattage indicated on the nameplate. They are designed to operate on alternating current, two wire single-phase service only. A three wire grounding cord with a three-prong attachment plug is provided. **DO NOT CONNECT TO DIRECT CURRENT (DC).**

### INSTALLATION

1. Single drawer units are supplied with 1" feet pre-assembled to the unit. Two and three drawer units are supplied with 4" feet. These feet must be assembled to the bottom of the unit once the shipping pallet has been removed. Do not install without the feet provided. Contact the factory or one of its representatives for optional 4" feet for single drawer units.
2. Place the unit on a flat level surface.
3. Thoroughly clean the unit before placing it in service. Remove the drawer by extending it fully then lifting slightly on the front of the drawer to clear the drawer stop. Replace the drawer by reversing this procedure. See Figure 1 below.

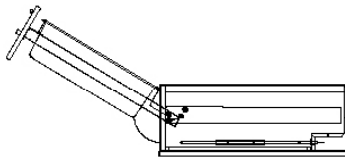


Figure 1

4. Connect the power cord to the appropriate receptacle.
5. Units of the same series (either narrow or wide construction) can be stacked directly on each other when the feet are removed. Do not stack more than four drawers high. To prevent a tipping hazard do not open more than one heavily loaded drawer at a time. Do not place more than 30 lbs. of food in each drawer.



### CAUTION

**DO NOT IMMERSE THE UNIT IN WATER. DO NOT USE PRESSURIZED WATER TO CLEAN THE UNIT. DO NOT ALLOW ANY LIQUID TO ENTER THE CONTROL COMPARTMENT THROUGH THE LOUVERED AIR OPENINGS.**

### CLEANING

1. Disconnect the unit from the electrical power source before cleaning.
2. Allow the unit to cool thoroughly before cleaning. Avoid contact with the heated parts of the unit.
3. Clean the unit daily. Use a soft cloth and mild detergent to keep the stainless steel panels free of scratches. If an abrasive cleaner is used rub in the direction of the grain to prevent unsightly scratches to the finish.

## OPERATION

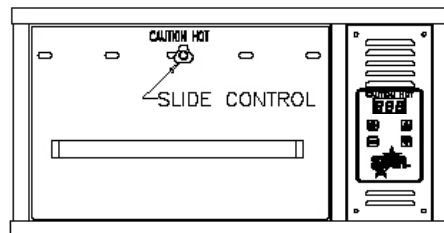
1. The temperature control will regulate temperatures inside the drawer cavity and is adjustable from 100° to 200°F. Pressing the ON/OFF button of the temperature control activates the unit. This control will provide close regulation of the temperature in the drawer and give an indication of the food temperature. The setpoint is displayed by pressing and holding the TEMP button. Adjust the regulated temperature by pressing the + or – buttons while holding the TEMP button down. The actual drawer temperature is displayed when no buttons are pressed and the control is in the ON mode. The dot in the lower corner of the display indicates when the control is calling for heat.

## CAUTION



**FOOD TEMPERATURE WILL VARY FROM THE CONTROL SET TEMPERATURE BASED ON THE MOISTURE CONTENT AND CONSISTENCY OF THE FOOD PRODUCT**

2. Each drawer is equipped with a moisture control. Turn the black knob above the drawer handle ¼ turn to the left to free the control adjustment. Slide the knob to align the holes in the drawer front and vent any excess moisture to produce a crisp product. Position the knob so that the holes are closed to produce a moist product.



Lock the control in position by turning the knob ¼ turn to the right. Different combinations of food products and heat settings will require different moisture settings. Breads and rolls are difficult to hold for prolonged periods of time because of the low moisture content of the product. These products are best held between 120° and 140°F. To retain the moisture of these products place them in a plastic bag when in the warmer. Time and experience is required to determine the optimum combination of temperature and moisture setting to provide a palatable product that will hold for an extended period of time.

3. Preheat the unit for ½ hour before placing food in the warmer. This unit is intended to hold hot food at the proper serving temperature. Foods should be heated to the proper temperature prior to being placed in the warmer. Most meat and poultry foods are best held between 160° and 175°F.
4. Optimum holding temperatures for specific foods are based on the products moisture content, product density, volume and proper serving temperature. Safe sanitary temperatures must be considered when determining the length of time a product can be held and remain palatable. Allow foods that are heated to extreme temperatures during preparation to cool before being placed in the warmer to prevent the accumulation of excess condensation.



## CAUTION

**TO PREVENT A TIPPING HAZARD AND POTENTIAL BODILY INJURY DO NOT OPEN MORE THAN ONE HEAVILY LOADED DRAWER AT A TIME. IT IS NOT RECOMMENDED TO PLACE MORE THAN 30 LBS OF FOOD IN EACH DRAWER.**

### THOROUGHLY INSPECT YOUR UNIT ON ARRIVAL

This unit has been tested for proper operation before leaving our plant to insure delivery of your unit in perfect condition. However, there are instances in which the unit may be damaged in transit. In the event you discover any type of damage to your product upon receipt, you must immediately contact the transportation company who delivered the item to you and initiate your claim with same. If this procedure is not followed, it may affect the warranty status of the unit.

### LIMITED EQUIPMENT WARRANTY

All workmanship and material in Star products have a one (1) year limited warranty on parts & labor in the United States and Canada. Such warranty is limited to the original purchaser only and shall be effective from the date the equipment is placed in service. Star's obligation under this warranty is limited to the repair of defects without charge, by the factory authorized service agency or one of its sub-agencies. Models that are considered portable (*see below*) should be taken to the closest Star service agency, transportation prepaid.

- > Star will not assume any responsibility for loss of revenue.
- > On all shipments outside the United States and Canada, see International Warranty.
- \* The warranty period for the JetStar six (6) ounce & Super JetStar eight (8) ounce series popcorn machines is two (2) years.
- \* The warranty period for the Chrome-Max Griddles is five (5) years on the griddle surface. See detailed warranty provided with unit.
- \* The warranty period for Teflon/Dura-Tec coatings is one year under normal use and reasonable care. This warranty does not apply if damage occurs to Teflon/Dura-Tec coatings from improper cleaning, maintenance, use of metallic utensils, or abrasive cleaners. This warranty does not apply to the "non-stick" properties of such materials.
- > This warranty does not apply to "Special Products" but to regular catalog items only. Star's warranty on "Special Products" is six (6) months on parts and ninety (90) days on labor.
- > This warranty does not apply to any item that is disassembled or tampered with for any purpose other than repair by a Star Authorized Service Center or the Service Center's sub-agency.
- > This warranty does not apply if damage occurs from improper installation, misuse, wrong voltage, wrong gas or operated contrary to the Installation and Operating instructions.
- > This warranty is not valid on Conveyor Ovens *unless* a "start-up/check-out" has been performed by a Factory Authorized Technician.

### PARTS WARRANTY

Parts that are sold to repair out of warranty equipment are warranted for ninety (90) days. The part only is warranted. Labor to replace the part is chargeable to the customer.

### SERVICES NOT COVERED BY WARRANTY

- |  |   |
|--|---|
| 1. Travel time and mileage rendered beyond the 50 mile radius limit  | 10. Voltage conversions   |
| 2. Mileage and travel time on portable equipment ( <i>see below</i> )  | 11. Gas conversions   |
| 3. Labor to replace such items that can be replaced easily during a daily cleaning routine, ie; removable kettles on fryers, knobs, grease drawers on griddles, etc. | 12. Pilot light adjustment  |
| 4. Installation of equipment   | 13. Miscellaneous adjustments   |
| 5. Damages due to improper installation  | 14. Thermostat calibration and by-pass adjustment   |
| 6. Damages from abuse or misuse  | 15. Resetting of circuit breakers or safety controls or reset buttons                           |
| 7. Operated contrary to the Operating and Installation Instructions  | 16. Replacement of bulbs  |
| 8. Cleaning of equipment   | 17. Replacement of fuses  |
| 9. Seasoning of griddle plates   | 18. Repair of damage created during transit, delivery, & installation OR created by acts of God |

### PORTABLE EQUIPMENT

Star will not honor service bills that include travel time and mileage charges for servicing any products considered "Portable" including items listed below. These products should be taken to the Service Agency for repair:

- |   |                            |
|---|----------------------------|
| * The Model 510FD Fryer.  | <b>ALL:</b>                |
| * The Model J4R, 4 oz. Popcorn Machine.   | * Pop-Up Toasters          |
| * The Model 518CMA & 526CMA Cheese Melter.  | * Butter Dispensers        |
| * The Model 12MC & 15MC & 18MCP Hot Food Merchandisers.                               | * Pretzel Merchandisers    |
| * The Model 12NCPW & 15NCPW Nacho Chip/Popcorn Warmer.                                | * Pastry Display Cabinets  |
| * All Hot Dog Equipment <b>except Roller Grills &amp; Drawer Bun Warmers.</b>         | * Nacho Chip Merchandisers |
| * All Nacho Cheese Warmers <b>except Model 11WLA Series Nacho Cheese Warmer.</b>      | * Accessories of any kind  |
| * All Condiment Dispensers <b>except the Model HPDE, &amp; SPDE Series Dispenser.</b> | * Sneeze Guards            |
| * All Specialty Food Warmers <b>except Model 130R, 11RW Series, and 11WSA Series.</b> | * Pizza Ovens              |
| * All QCS/RCS Series Toasters <b>except Model QCS3 &amp; RCS3 Series.</b>             | * Heat Lamps               |
|   | * Pumps                    |

The foregoing warranty is in lieu of any and all other warranties expressed or implied and constitutes the entire warranty.

### FOR ASSISTANCE

Should you need any assistance regarding the Operation or Maintenance of any Star equipment; write, phone, fax or email our Service Department. In all correspondence mention the Model number and the Serial number of your unit, and the voltage or type of gas you are using.





STAR MANUFACTURING INTERNATIONAL INC.  
#10 SUNNEN DRIVE  
ST. LOUIS, MO. 63143, USA

DR.	TH	CK.	DATE
			01-23-01

TOLERANCES UNLESS OTHERWISE NOTED  
FRACTIONS  $\pm 1/64$  DECIMALS  $\pm .005$  ANGLES  $\pm 1^\circ$

MATERIAL

-----

FINISH

-----

THIS DRAWING CONTAINS INFORMATION CONFIDENTIAL TO STAR MFG. INT'L. INC.  
NO REPRODUCTION OR DISCLOSURE OF ITS CONTENTS IS PERMITTED.

MODEL NO.  
SDW1/2/3

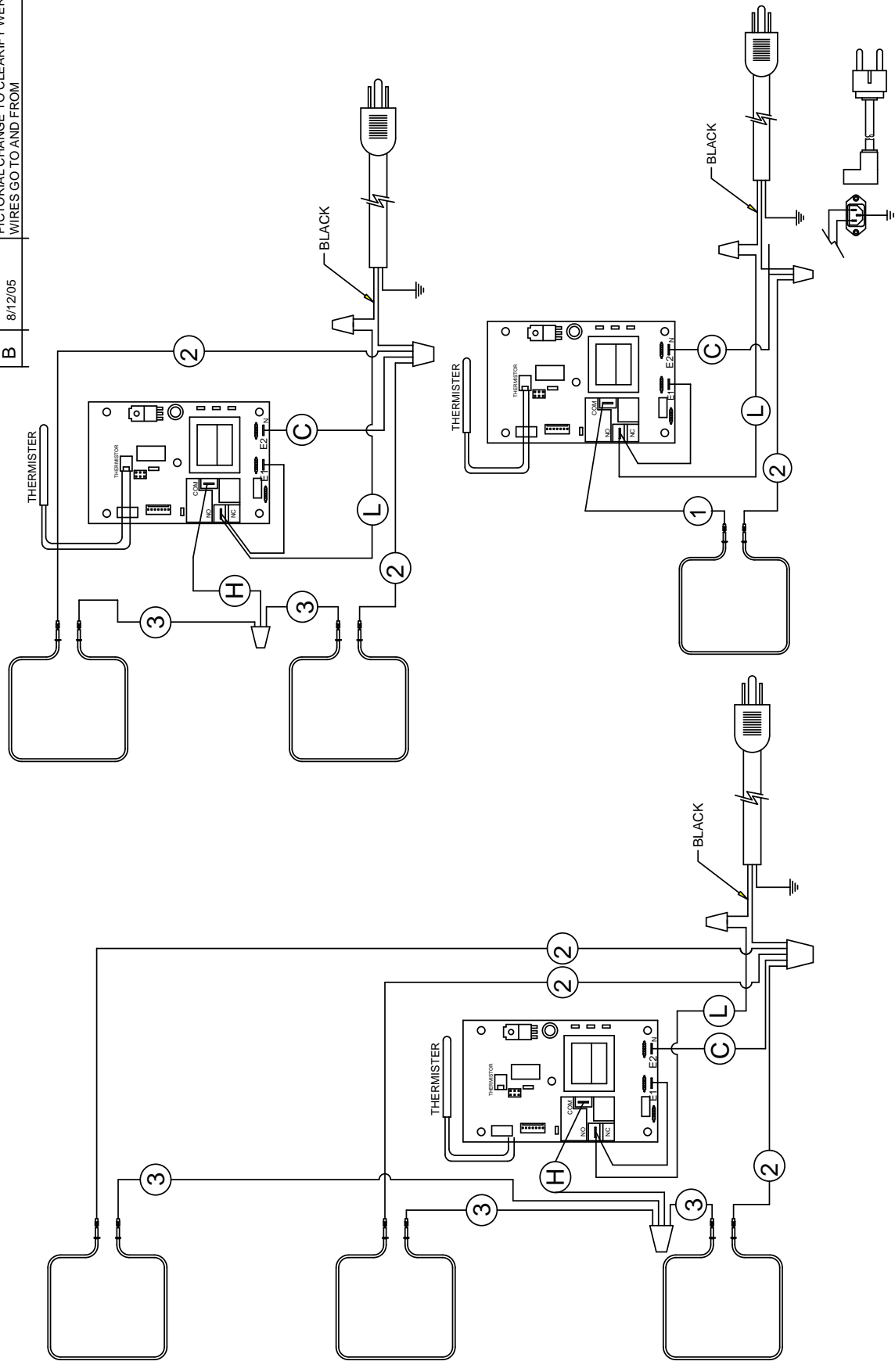
TITLE

# WIRE DIAGRAM

REVISIONS

LTR	DATE	DESCRIPTION OF CHANGE
A	4-17-01	PICTORIAL CHANGE
B	8/12/05	PICTORIAL CHANGE TO CLARIFY WERE WIRES GO TO AND FROM

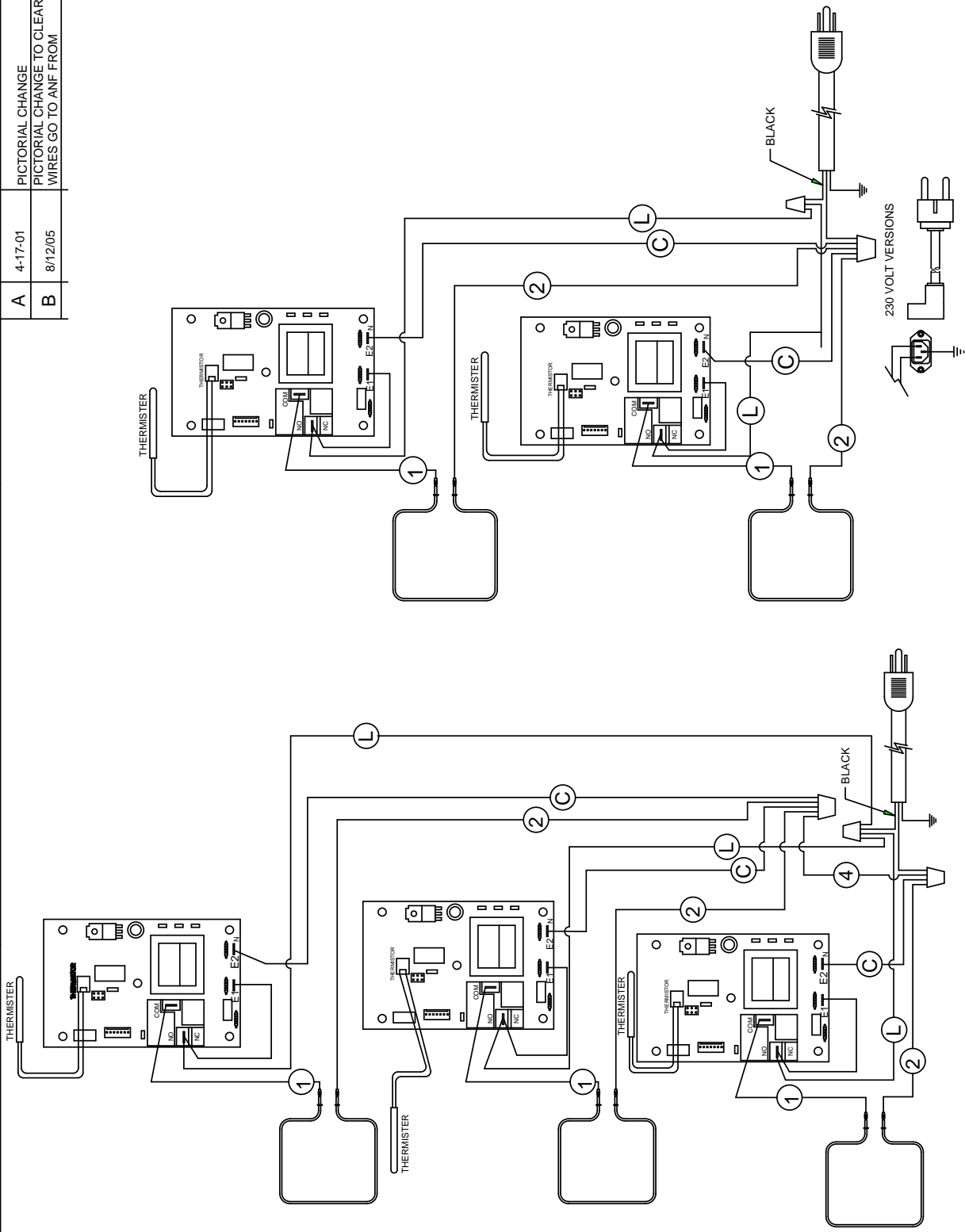
DR
TH
CG

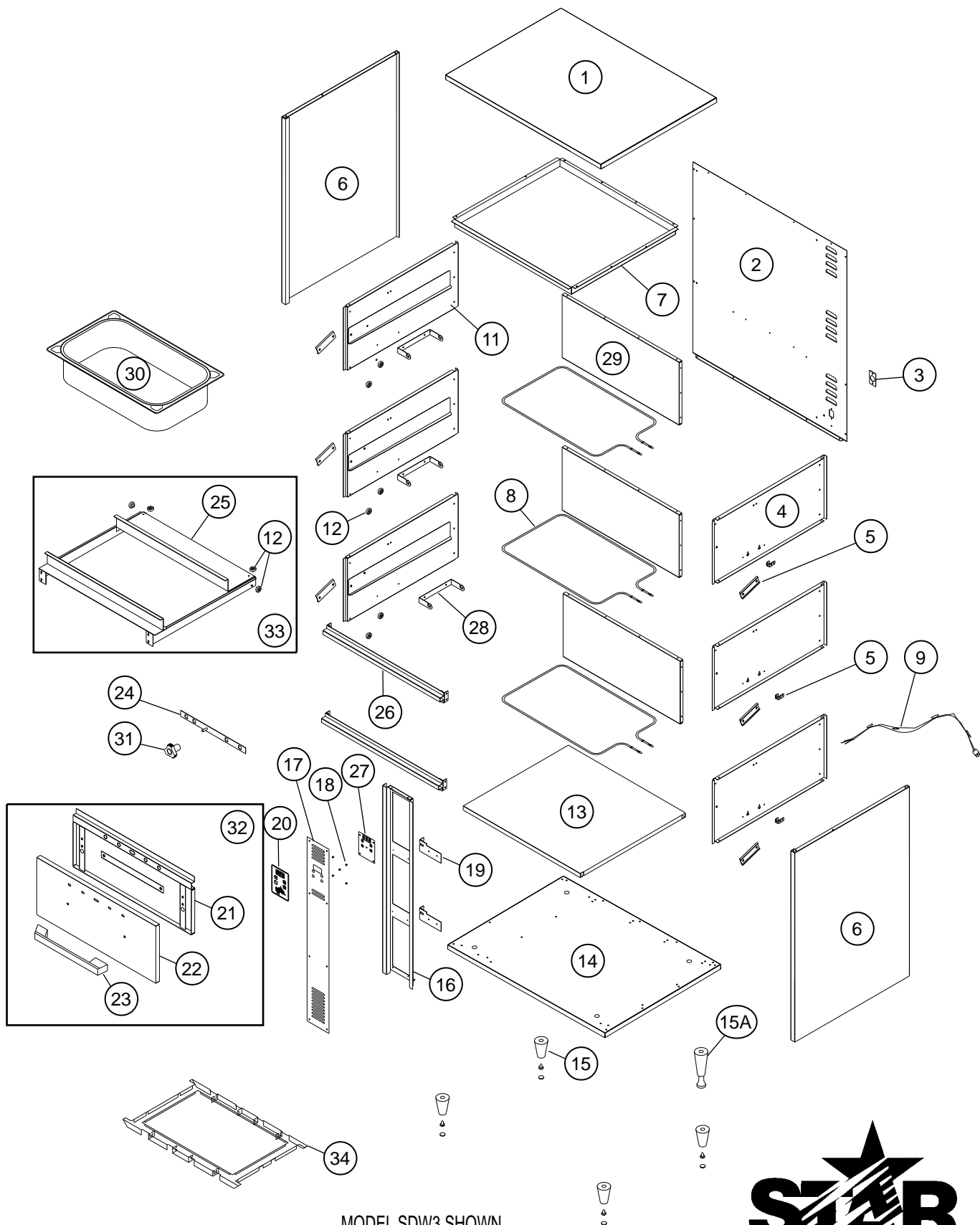


230 VOLT VERSIONS  
TYPICAL



<div><div><div><div><div><div></div><div></div><div></div><div></div><div></div></div><div><div></div><div></div><div></div><div></div><div></div></div><div><div></div><div></div><div></div><div></div><div></div></div><div><div></div><div></div><div></div><div></div><div></div></div><div><div></div><div></div><div></div><div></div><div></div></div></div></div><div>STAR MANUFACTURING INTERNATIONAL INC. #10 SUNNEN DRIVE ST. LOUIS, MO. 63143, USA</div></div></div>				MATERIAL  -----  FINISH  -----		MODEL NO.  SDW2C/3C		PART NO.  SK1851			
DR.		TH	CK.	DATE	TITLE  WIRE DIAGRAM						
TOLERANCES UNLESS OTHERWISE NOTED FRACTIONS ± 1/64 DECIMALS ± .005 ANGLES ± 1°				01-23-01							
THIS DRAWING CONTAINS INFORMATION CONFIDENTIAL TO STAR MFG. INT'L. INC. NO REPRODUCTION OR DISCLOSURE OF ITS CONTENTS IS PERMITTED.					REVISIONS		LTR	DATE	DESCRIPTION OF CHANGE		DR
<div>WIRE DIAGRAM</div> <div>WIRE 1 WIRE 2 WIRE 3 WIRE 4 WIRE 5 WIRE 6 WIRE 7 WIRE 8 WIRE 9 WIRE 10 WIRE 11 WIRE 12 WIRE 13 WIRE 14 WIRE 15 WIRE 16 WIRE 17 WIRE 18 WIRE 19 WIRE 20 WIRE 21 WIRE 22 WIRE 23 WIRE 24 WIRE 25 WIRE 26 WIRE 27 WIRE 28 WIRE 29 WIRE 30 WIRE 31 WIRE 32 WIRE 33 WIRE 34 WIRE 35 WIRE 36 WIRE 37 WIRE 38 WIRE 39 WIRE 40 WIRE 41 WIRE 42 WIRE 43 WIRE 44 WIRE 45 WIRE 46 WIRE 47 WIRE 48 WIRE 49 WIRE 50 WIRE 51 WIRE 52 WIRE 53 WIRE 54 WIRE 55 WIRE 56 WIRE 57 WIRE 58 WIRE 59 WIRE 60 WIRE 61 WIRE 62 WIRE 63 WIRE 64 WIRE 65 WIRE 66 WIRE 67 WIRE 68 WIRE 69 WIRE 70 WIRE 71 WIRE 72 WIRE 73 WIRE 74 WIRE 75 WIRE 76 WIRE 77 WIRE 78 WIRE 79 WIRE 80 WIRE 81 WIRE 82 WIRE 83 WIRE 84 WIRE 85 WIRE 86 WIRE 87 WIRE 88 WIRE 89 WIRE 90 WIRE 91 WIRE 92 WIRE 93 WIRE 94 WIRE 95 WIRE 96 WIRE 97 WIRE 98 WIRE 99 WIRE 100 WIRE 101 WIRE 102 WIRE 103 WIRE 104 WIRE 105 WIRE 106 WIRE 107 WIRE 108 WIRE 109 WIRE 110 WIRE 111 WIRE 112 WIRE 113 WIRE 114 WIRE 115 WIRE 116 WIRE 117 WIRE 118 WIRE 119 WIRE 120 WIRE 121 WIRE 122 WIRE 123 WIRE 124 WIRE 125 WIRE 126 WIRE 127 WIRE 128 WIRE 129 WIRE 130 WIRE 131 WIRE 132 WIRE 133 WIRE 134 WIRE 135 WIRE 136 WIRE 137 WIRE 138 WIRE 139 WIRE 140 WIRE 141 WIRE 142 WIRE 143 WIRE 144 WIRE 145 WIRE 146 WIRE 147 WIRE 148 WIRE 149 WIRE 150 WIRE 151 WIRE 152 WIRE 153 WIRE 154 WIRE 155 WIRE 156 WIRE 157 WIRE 158 WIRE 159 WIRE 160 WIRE 161 WIRE 162 WIRE 163 WIRE 164 WIRE 165 WIRE 166 WIRE 167 WIRE 168 WIRE 169 WIRE 170 WIRE 171 WIRE 172 WIRE 173 WIRE 174 WIRE 175 WIRE 176 WIRE 177 WIRE 178 WIRE 179 WIRE 180 WIRE 181 WIRE 182 WIRE 183 WIRE 184 WIRE 185 WIRE 186 WIRE 187 WIRE 188 WIRE 189 WIRE 190 WIRE 191 WIRE 192 WIRE 193 WIRE 194 WIRE 195 WIRE 196 WIRE 197 WIRE 198 WIRE 199 WIRE 200 WIRE 201 WIRE 202 WIRE 203 WIRE 204 WIRE 205 WIRE 206 WIRE 207 WIRE 208 WIRE 209 WIRE 210 WIRE 211 WIRE 212 WIRE 213 WIRE 214 WIRE 215 WIRE 216 WIRE 217 WIRE 218 WIRE 219 WIRE 220 WIRE 221 WIRE 222 WIRE 223 WIRE 224 WIRE 225 WIRE 226 WIRE 227 WIRE 228 WIRE 229 WIRE 230 WIRE 231 WIRE 232 WIRE 233 WIRE 234 WIRE 235 WIRE 236 WIRE 237 WIRE 238 WIRE 239 WIRE 240 WIRE 241 WIRE 242 WIRE 243 WIRE 244 WIRE 245 WIRE 246 WIRE 247 WIRE 248 WIRE 249 WIRE 250 WIRE 251 WIRE 252 WIRE 253 WIRE 254 WIRE 255 WIRE 256 WIRE 257 WIRE 258 WIRE 259 WIRE 260 WIRE 261 WIRE 262 WIRE 263 WIRE 264 WIRE 265 WIRE 266 WIRE 267 WIRE 268 WIRE 269 WIRE 270 WIRE 271 WIRE 272 WIRE 273 WIRE 274 WIRE 275 WIRE 276 WIRE 277 WIRE 278 WIRE 279 WIRE 280 WIRE 281 WIRE 282 WIRE 283 WIRE 284 WIRE 285 WIRE 286 WIRE 287 WIRE 288 WIRE 289 WIRE 290 WIRE 291 WIRE 292 WIRE 293 WIRE 294 WIRE 295 WIRE 296 WIRE 297 WIRE 298 WIRE 299 WIRE 300 WIRE 301 WIRE 302 WIRE 303 WIRE 304 WIRE 305 WIRE 306 WIRE 307 WIRE 308 WIRE 309 WIRE 310 WIRE 311 WIRE 312 WIRE 313 WIRE 314 WIRE 315 WIRE 316 WIRE 317 WIRE 318 WIRE 319 WIRE 320 WIRE 321 WIRE 322 WIRE 323 WIRE 324 WIRE 325 WIRE 326 WIRE 327 WIRE 328 WIRE 329 WIRE 330 WIRE 331 WIRE 332 WIRE 333 WIRE 334 WIRE 335 WIRE 336 WIRE 337 WIRE 338 WIRE 339 WIRE 340 WIRE 341 WIRE 342 WIRE 343 WIRE 344 WIRE 345 WIRE 346 WIRE 347 WIRE 348 WIRE 349 WIRE 350 WIRE 351 WIRE 352 WIRE 353 WIRE 354 WIRE 355 WIRE 356 WIRE 357 WIRE 358 WIRE 359 WIRE 360 WIRE 361 WIRE 362 WIRE 363 WIRE 364 WIRE 365 WIRE 366 WIRE 367 WIRE 368 WIRE 369 WIRE 370 WIRE 371 WIRE 372 WIRE 373 WIRE 374 WIRE 375 WIRE 376 WIRE 377 WIRE 378 WIRE 379 WIRE 380 WIRE 381 WIRE 382 WIRE 383 WIRE 384 WIRE 385 WIRE 386 WIRE 387 WIRE 388 WIRE 389 WIRE 390 WIRE 391 WIRE 392 WIRE 393 WIRE 394 WIRE 395 WIRE 396 WIRE 397 WIRE 398 WIRE 399 WIRE 400 WIRE 401 WIRE 402 WIRE 403 WIRE 404 WIRE 405 WIRE 406 WIRE 407 WIRE 408 WIRE 409 WIRE 410 WIRE 411 WIRE 412 WIRE 413 WIRE 414 WIRE 415 WIRE 416 WIRE 417 WIRE 418 WIRE 419 WIRE 420 WIRE 421 WIRE 422 WIRE 423 WIRE 424 WIRE 425 WIRE 426 WIRE 427 WIRE 428 WIRE 429 WIRE 430 WIRE 431 WIRE 432 WIRE 433 WIRE 434 WIRE 435 WIRE 436 WIRE 437 WIRE 438 WIRE 439 WIRE 440 WIRE 441 WIRE 442 WIRE 443 WIRE 444 WIRE 445 WIRE 446 WIRE 447 WIRE 448 WIRE 449 WIRE 450 WIRE 451 WIRE 452 WIRE 453 WIRE 454 WIRE 455 WIRE 456 WIRE 457 WIRE 458 WIRE 459 WIRE 460 WIRE 461 WIRE 462 WIRE 463 WIRE 464 WIRE 465 WIRE 466 WIRE 467 WIRE 468 WIRE 469 WIRE 470 WIRE 471 WIRE 472 WIRE 473 WIRE 474 WIRE 475 WIRE 476 WIRE 477 WIRE 478 WIRE 479 WIRE 480 WIRE 481 WIRE 482 WIRE 483 WIRE 484 WIRE 485 WIRE 486 WIRE 487 WIRE 488 WIRE 489 WIRE 490 WIRE 491 WIRE 492 WIRE 493 WIRE 494 WIRE 495 WIRE 496 WIRE 497 WIRE 498 WIRE 499 WIRE 500 WIRE 501 WIRE 502 WIRE 503 WIRE 504 WIRE 505 WIRE 506 WIRE 507 WIRE 508 WIRE 509 WIRE 510 WIRE 511 WIRE 512 WIRE 513 WIRE 514 WIRE 515 WIRE 516 WIRE 517 WIRE 518 WIRE 519 WIRE 520 WIRE 521 WIRE 522 WIRE 523 WIRE 524 WIRE 525 WIRE 526 WIRE 527 WIRE 528 WIRE 529 WIRE 530 WIRE 531 WIRE 532 WIRE 533 WIRE 534 WIRE 535 WIRE 536 WIRE 537 WIRE 538 WIRE 539 WIRE 540 WIRE 541 WIRE 542 WIRE 543 WIRE 544 WIRE 545 WIRE 546 WIRE 547 WIRE 548 WIRE 549 WIRE 550 WIRE 551 WIRE 552 WIRE 553 WIRE 554 WIRE 555 WIRE 556 WIRE 557 WIRE 558 WIRE 559 WIRE 560 WIRE 561 WIRE 562 WIRE 563 WIRE 564 WIRE 565 WIRE 566 WIRE 567 WIRE 568 WIRE 569 WIRE 570 WIRE 571 WIRE 572 WIRE 573 WIRE 574 WIRE 575 WIRE 576 WIRE 577 WIRE 578 WIRE 579 WIRE 580 WIRE 581 WIRE 582 WIRE 583 WIRE 584 WIRE 585 WIRE 586 WIRE 587 WIRE 588 WIRE 589 WIRE 590 WIRE 591 WIRE 592 WIRE 593 WIRE 594 WIRE 595 WIRE 596 WIRE 597 WIRE 598 WIRE 599 WIRE 600 WIRE 601 WIRE 602 WIRE 603 WIRE 604 WIRE 605 WIRE 606 WIRE 607 WIRE 608 WIRE 609 WIRE 610 WIRE 611 WIRE 612 WIRE 613 WIRE 614 WIRE 615 WIRE 616 WIRE 617 WIRE 618 WIRE 619 WIRE 620 WIRE 621 WIRE 622 WIRE 623 WIRE 624 WIRE 625 WIRE 626 WIRE 627 WIRE 628 WIRE 629 WIRE 630 WIRE 631 WIRE 632 WIRE 633 WIRE 634 WIRE 635 WIRE 636 WIRE 637 WIRE 638 WIRE 639 WIRE 640 WIRE 641 WIRE 642 WIRE 643 WIRE 644 WIRE 645 WIRE 646 WIRE 647 WIRE 648 WIRE 649 WIRE 650 WIRE 651 WIRE 652 WIRE 653 WIRE 654 WIRE 655 WIRE 656 WIRE 657 WIRE 658 WIRE 659 WIRE 660 WIRE 661 WIRE 662 WIRE 663 WIRE 664 WIRE 665 WIRE 666 WIRE 667 WIRE 668 WIRE 669 WIRE 670 WIRE 671 WIRE 672 WIRE 673 WIRE 674 WIRE 675 WIRE 676 WIRE 677 WIRE 678 WIRE 679 WIRE 680 WIRE 681 WIRE 682 WIRE 683 WIRE 684 WIRE 685 WIRE 686 WIRE 687 WIRE 688 WIRE 689 WIRE 690 WIRE 691 WIRE 692 WIRE 693 WIRE 694 WIRE 695 WIRE 696 WIRE 697 WIRE 698 WIRE 699 WIRE 700 WIRE 701 WIRE 702 WIRE 703 WIRE 704 WIRE 705 WIRE 706 WIRE 707 WIRE 708 WIRE 709 WIRE 710 WIRE 711 WIRE 712 WIRE 713 WIRE 714 WIRE 715 WIRE 716 WIRE 717 WIRE 718 WIRE 719 WIRE 720 WIRE 721 WIRE 722 WIRE 723 WIRE 724 WIRE 725 WIRE 726 WIRE 727 WIRE 728 WIRE 729 WIRE 730 WIRE 731 WIRE 732 WIRE 733 WIRE 734 WIRE 735 WIRE 736 WIRE 737 WIRE 738 WIRE 739 WIRE 740 WIRE 741 WIRE 742 WIRE 743 WIRE 744 WIRE 745 WIRE 746 WIRE 747 WIRE 748 WIRE 749 WIRE 750 WIRE 751 WIRE 752 WIRE 753 WIRE 754 WIRE 755 WIRE 756 WIRE 757 WIRE 758 WIRE 759 WIRE 760 WIRE 761 WIRE 762 WIRE 763 WIRE 764 WIRE 765 WIRE 766 WIRE 767 WIRE 768 WIRE 769 WIRE 770 WIRE 771 WIRE 772 WIRE 773 WIRE 774 WIRE 775 WIRE 776 WIRE 777 WIRE 778 WIRE 779 WIRE 780 WIRE 781 WIRE 782 WIRE 783 WIRE 784 WIRE 785 WIRE 786 WIRE 787 WIRE 788 WIRE 789 WIRE 790 WIRE 791 WIRE 792 WIRE 793 WIRE 794 WIRE 795 WIRE 796 WIRE 797 WIRE 798 WIRE 799 WIRE 800 WIRE 801 WIRE 802 WIRE 803 WIRE 804 WIRE 805 WIRE 806 WIRE 807 WIRE 808 WIRE 809 WIRE 810 WIRE 811 WIRE 812 WIRE 813 WIRE 814 WIRE 815 WIRE 816 WIRE 817 WIRE 818 WIRE 819 WIRE 820 WIRE 821 WIRE 822 WIRE 823 WIRE 824 WIRE 825 WIRE 826 WIRE 827 WIRE 828 WIRE 829 WIRE 830 WIRE 831 WIRE 832 WIRE 833 WIRE 834 WIRE 835 WIRE 836 WIRE 837 WIRE 838 WIRE 839 WIRE 840 WIRE 841 WIRE 842 WIRE 843 WIRE 844 WIRE 845 WIRE 846 WIRE 847 WIRE 848 WIRE 849 WIRE 850 WIRE 851 WIRE 852 WIRE 853 WIRE 854 WIRE 855 WIRE 856 WIRE 857 WIRE 858 WIRE 859 WIRE 860 WIRE 861 WIRE 862 WIRE 863 WIRE 864 WIRE 865 WIRE 866 WIRE 867 WIRE 868 WIRE 869 WIRE 870 WIRE 871 WIRE 872 WIRE 873 WIRE 874 WIRE 875 WIRE 876 WIRE 877 WIRE 878 WIRE 879 WIRE 880 WIRE 881 WIRE 882 WIRE 883 WIRE 884 WIRE 885 WIRE 886 WIRE 887 WIRE 888 WIRE 889 WIRE 890 WIRE 891 WIRE 892 WIRE 893 WIRE 894 WIRE 895 WIRE 896 WIRE 897 WIRE 898 WIRE 899 WIRE 900 WIRE 901 WIRE 902 WIRE 903 WIRE 904 WIRE 905 WIRE 906 WIRE 907 WIRE 908 WIRE 909 WIRE 910 WIRE 911 WIRE 912 WIRE 913 WIRE 914 WIRE 915 WIRE 916 WIRE 917 WIRE 918 WIRE 919 WIRE 920 WIRE 921 WIRE 922 WIRE 923 WIRE 924 WIRE 925 WIRE 926 WIRE 927 WIRE 928 WIRE 929 WIRE 930 WIRE 931 WIRE 932 WIRE 933 WIRE 934 WIRE 935 WIRE 936 WIRE 937 WIRE 938 WIRE 939 WIRE 940 WIRE 941 WIRE 942 WIRE 943 WIRE 944 WIRE 945 WIRE 946 WIRE 947 WIRE 948 WIRE 949 WIRE 950 WIRE 951 WIRE 952 WIRE 953 WIRE 954 WIRE 955 WIRE 956 WIRE 957 WIRE 958 WIRE 959 WIRE 960 WIRE 961 WIRE 962 WIRE 963 WIRE 964 WIRE 965 WIRE 966 WIRE 967 WIRE 968 WIRE 969 WIRE 970 WIRE 971 WIRE 972 WIRE 973 WIRE 974 WIRE 975 WIRE 976 WIRE 977 WIRE 978 WIRE 979 WIRE 980 WIRE 981 WIRE 982 WIRE 983 WIRE 984 WIRE 985 WIRE 986 WIRE 987 WIRE 988 WIRE 989 WIRE 990 WIRE 991 WIRE 992 WIRE 993 WIRE 994 WIRE 995 WIRE 996 WIRE 997 WIRE 998 WIRE 999 WIRE 1000 WIRE 1001 WIRE 1002 WIRE 1003 WIRE 1004 WIRE 1005 WIRE 1006 WIRE 1007 WIRE 1008 WIRE 1009 WIRE 1010 WIRE 1011 WIRE 1012 WIRE 1013 WIRE 1014 WIRE 1015 WIRE 1016 WIRE 1017 WIRE 1018 WIRE 1019 WIRE 1020 WIRE 1021 WIRE 1022 WIRE 1023 WIRE 1024 WIRE 1025 WIRE 1026 WIRE 1027 WIRE 1028 WIRE 1029 WIRE 1030 WIRE 1031 WIRE 1032 WIRE 1033 WIRE 1034 WIRE 1035 WIRE 1036 WIRE 1037 WIRE 1038 WIRE 1039 WIRE 1040 WIRE 1041 WIRE 1042 WIRE 1043 WIRE 1044 WIRE 1045 WIRE 1046 WIRE 1047 WIRE 1048 WIRE 1049 WIRE 1050 WIRE 1051 WIRE 1052 WIRE 1053 WIRE 1054 WIRE 1055 WIRE 1056 WIRE 1057 WIRE 1058 WIRE 1059 WIRE 1060 WIRE 1061 WIRE 1062 WIRE 1063 WIRE 1064 WIRE 1065 WIRE 1066 WIRE 1067 WIRE 1068 WIRE 1069 WIRE 1070 WIRE 1071 WIRE 1072 WIRE 1073 WIRE 1074 WIRE 1075 WIRE 1076 WIRE 1077 WIRE 1078 WIRE 1079 WIRE 1080 WIRE 1081 WIRE 1082 WIRE 1083 WIRE 1084 WIRE 1085 WIRE 1086 WIRE 1087 WIRE 1088 WIRE 1089 WIRE 1090 WIRE 1091 WIRE 1092 WIRE 1093 WIRE 1094 WIRE 1095 WIRE 1096 WIRE 1097 WIRE 1098 WIRE 1099 WIRE 1100 WIRE 1101 WIRE 1102 WIRE 1103 WIRE 1104 WIRE 1105 WIRE 1106 WIRE 1107 WIRE 1108 WIRE 1109 WIRE 1110 WIRE 1111 WIRE 1112 WIRE 1113 WIRE 1114 WIRE 1115 WIRE 1116 WIRE 1117 WIRE 1118 WIRE 1119 WIRE 1120 WIRE 1121 WIRE 1122 WIRE 1123 WIRE 1124 WIRE 1125 WIRE 1126 WIRE 1127 WIRE 1128 WIRE 1129 WIRE 1130 WIRE 1131 WIRE 1132 WIRE 1133 WIRE 1134 WIRE 1135 WIRE 1136 WIRE 1137 WIRE 1138 WIRE 1139 WIRE 1140 WIRE 1141 WIRE 1142 WIRE 1143 WIRE 1144 WIRE 1145 WIRE 1146 WIRE 1147 WIRE 1148 WIRE 1149 WIRE 1150 WIRE 1151 WIRE 1152 WIRE 1153 WIRE 1154 WIRE 1155 WIRE 1156 WIRE 1157 WIRE 1158 WIRE 1159 WIRE 1160 WIRE 1161 WIRE 1162 WIRE 1163 WIRE 1164 WIRE 1165 WIRE 1166 WIRE 1167 WIRE 1168 WIRE 1169 WIRE 1170 WIRE 1171 WIRE 1172 WIRE 1173 WIRE 1174 WIRE 1175 WIRE 1176 WIRE 1177 WIRE 1178 WIRE 1179 WIRE 1180 WIRE 1181 WIRE 1182 WIRE 1183 WIRE 1184 WIRE 1185 WIRE 1186 WIRE 1187 WIRE 1188 WIRE 1189 WIRE 1190 WIRE 1191 WIRE 1192 WIRE 1193 WIRE 1194 WIRE 1195 WIRE 1196 WIRE 1197 WIRE 1198 WIRE 1199 WIRE 1200 WIRE 1201 WIRE 1202 WIRE 1203 WIRE 1204 WIRE 1205 WIRE 1206 WIRE 1207 WIRE 1208 WIRE 1209 WIRE 1210 WIRE 1211 WIRE 1212 WIRE 1213 WIRE 1214 WIRE 1215 WIRE 1216 WIRE 1217 WIRE 1218 WIRE 1219 WIRE 1220 WIRE 1221 WIRE 1222 WIRE 1223 WIRE 1224 WIRE 1225 WIRE 1226 WIRE 1227 WIRE 1228 WIRE 1229 WIRE 1230 WIRE 1231 WIRE 1232 WIRE 1233 WIRE 1234 WIRE 1235 WIRE 1236 WIRE 1237 WIRE 1238 WIRE 1239 WIRE 1240 WIRE 1241 WIRE 1242 WIRE 1243 WIRE 1244 WIRE 1245 WIRE 1246 WIRE 1247 WIRE 1248 WIRE 1249 WIRE 1250 WIRE 1251 WIRE 1252 WIRE 1253 WIRE 1254 WIRE 1255 WIRE 1256 WIRE 1257 WIRE 1258 WIRE 1259 WIRE 1260 WIRE 1261 WIRE 1262 WIRE 1263 WIRE 1264 WIRE 1265 WIRE 1266 WIRE 1267 WIRE 1268 WIRE 1269 WIRE 1270 WIRE 1271 WIRE 1272 WIRE 1273 WIRE 1274 WIRE 1275 WIRE 1276 WIRE 1277 WIRE 1278 WIRE 1279 WIRE 1280 WIRE 1281 WIRE 1282 WIRE 1283 WIRE 1284 WIRE 1285 WIRE 1286 WIRE 1287 WIRE 1288 WIRE 1289 WIRE 1290 WIRE 1291 WIRE 1292 WIRE 1293 WIRE 1294 WIRE 1295 WIRE 1296 WIRE 1297 WIRE 1298 WIRE 1299 WIRE 1300 WIRE 1301 WIRE 1302 WIRE 1303 WIRE 1304 WIRE 1305 WIRE 1306 WIRE 1307 WIRE 1308 WIRE 1309 WIRE 1310 WIRE 1311 WIRE 1312 WIRE 1313 WIRE 1314 WIRE 1315 WIRE 1316 WIRE 1317 WIRE 1318 WIRE 1319 WIRE 1320 WIRE 1321 WIRE 1322 WIRE 1323 WIRE 1324 WIRE 1325 WIRE 1326 WIRE 1327 WIRE 1328 WIRE 1329 WIRE 1330 WIRE 1331 WIRE 1332 WIRE 1333 WIRE 1334 WIRE 1335 WIRE 1336 WIRE 1337 WIRE 1338 WIRE 1339 WIRE 1340 WIRE 1341 WIRE 1342 WIRE 1343 WIRE 1344 WIRE 1345 WIRE 1346 WIRE 1347 WIRE 1348 WIRE 1349 WIRE 1350 WIRE 1351 WIRE 1352 WIRE 1353 WIRE 1354 WIRE 1355 WIRE 1356 WIRE 1357 WIRE 1358 WIRE 1359 WIRE 1360 WIRE 1361 WIRE 1362 WIRE 1363 WIRE 1364 WIRE 1365 WIRE 1366 WIRE 1367 WIRE 1368 WIRE 1369 WIRE 1370 WIRE 1371 WIRE 1372 WIRE 1373 WIRE 1374 WIRE 1375 WIRE 1376 WIRE 1377 WIRE 1378 WIRE 1379 WIRE 1380 WIRE 1381 WIRE 1382 WIRE 1383 WIRE 1384 WIRE 1385 WIRE 1386 WIRE 1387 WIRE 1388 WIRE 1389 WIRE 1390 WIRE 1391 WIRE 1392 WIRE 1393 WIRE 1394 WIRE 1395 WIRE 1396 WIRE 1397 WIRE 1398 WIRE 1399 WIRE 1400 WIRE 1401 WIRE 1402 WIRE 1403 WIRE 1404 WIRE 1405 WIRE 1406 WIRE 1407 WIRE 1408 WIRE 1409 WIRE 1410 WIRE 1411 WIRE 1412 WIRE 1413 WIRE 1414 WIRE 1415 WIRE 1416 WIRE 1417 WIRE 1418 WIRE 1419 WIRE 1420 WIRE 1421 WIRE 1422 WIRE 1423 WIRE 1424 WIRE 1425 WIRE 1426 WIRE 1427 WIRE 1428 WIRE 1429 WIRE 1430 WIRE 1431 WIRE 1432 WIRE 1433 WIRE 1434 WIRE 1435 WIRE 1436 WIRE 1437 WIRE 1438 WIRE 1439 WIRE 1440 WIRE 1441 WIRE 1442 WIRE 1443 WIRE 1444 WIRE 1445 WIRE 1446</div>											





MODEL SDW3 SHOWN  
DRAWER WARMER

SOME ITEMS ARE INCLUDED FOR  
ILLUSTRATIVE PURPOSES ONLY AND IN  
CERTAIN INSTANCES MAY NOT BE AVAILABLE

MODEL - SDW1, SDW2, SDW3



STAR MANUFACTURING INTERNATIONAL, INC.

SK1840

REV. B

12/12/2000

# PARTS LIST

May 7, 2010, Rev. C

MODEL SDW1, SDW2, SDW3, SDW1W, SDW2W Drawer Warmers

Key Number	Part Number	Number Per Unit	Description and Model Designation
1	E9-Z4031	1	TOP PANEL
2	E9-Z4030	1	BACK PANEL SDW1
	E9-Z4089	1	BACK PANEL SDW2
	E9-Z4097	1	BACK PANEL SDW2
3	E9-Z4027	1	ADAPTER PLATE 120V
	2E-Y9227	1	INLET 230V
	2K-Y2967	1	CORD BUSHING 120V
4	E9-DW0004	1/2/3	LINER ASSEMBLY RIGHT SDW1 / SDW2 / SDW3
	E9-DW0040	1/2	LINER ASSEMBLY RIGHT SDW1W / SDW2W
5	E9-Z3987	2/4/6	BEARING STIFFENER SDW1 / SDW2 / SDW3
6	E9-Z4032	2	SIDE PANEL SDW1
	E9-Z4090	2	SIDE PANEL SDW2
	E9-Z4098	2	SIDE PANEL SDW2
7	E9-Z4022	1	TOP LINER
8	2N-Z4057	1/2/3	HEATING ELEMENT 120V SDW1 / SDW2 / SDW3
	2N-Z4154	1/2/3	HEATING ELEMENT 230V SDW1 / SDW2 / SDW3
9	A5-250027	1	LEAD IN CORD 120V
	2E-Z0512	1	LEAD IN CORD 230V
10	E9-Z3986	1/2/3	SENSOR BRACKET SDW1 / SDW2 / SDW3
11	E9-DW0003	1/2/3	LINER ASSEMBLY LT SDW1 / SDW2 / SDW3
	E9-DW0039	1/2	LINER ASSEMBLY LT SDW1W / SDW2W
12	2P-Z0315	8/16/24	GUIDE BEARING w/ SCREW SDW1 / SDW2 / SDW3
NI	2C-1810	8/16/24	WASHER SDW1 / SDW2 / SDW3
NI	2C-Z0498	8/16/24	NUT SDW1 / SDW2 / SDW3
13	E9-Z4009	1	BOTTOM LINER
14	E9-DW0002	1	BOTTOM ASSEMBLY
15	2R-Z5846	4	FOOT
15A	2R-Y5092	4	4" FOOT SDW2, SDW3
16	E9-Z4001	1	FRONT PANEL SDW1
	E9-Z4088	1	FRONT PANEL SDW2
	E9-Z4096	1	FRONT PANEL SDW3
17	E9-DW0012	1	CONTROL PANEL ASSY SDW1
	E9-DW0020	1	CONTROL PANEL ASSY SDW2
	E9-DW0022	1	CONTROL PANEL ASSY SDW3
18	2K-Z1971	5	CONTROL BOARD SPACER
19	E9-Z4078	1/2	GUSSET SDW2 / SDW3
20	2M-Z4067	1	GRAPHICS PANEL SDW1
21	E9-DW0011	1/2/3	DRAWER LINER ASSEMBLY SDW1 / SDW2 / SDW3
22	E9-Z4050	1/2/3	DRAWER FRONT SDW1 / SDW2 / SDW3
23	2R-Y7557	1/2/3	DRAWER PULL SDW1 / SDW2 / SDW3
24	E9-DW0009	1/2/3	DAMPER ASSEMBLY SDW1 / SDW2 / SDW3
25	E9-DW0010	1/2/3	DRAWER ASSEMBLY SDW1 / SDW2 / SDW3
	E9-DW0043	1/2	DRAWER ASSEMBLY SDW1W / SDW2W
26	E9-DW0021	1/2	FRONT TRIM ASSEMBLY SDW2 / SDW3
27	2E-Z4062	1	CONTROL W/ SENSOR 120V
	2E-Z4153	1	CONTROL W/ SENSOR 230V
28	E9-Z4016	1/2/3	ELEMENT BRACKET SDW1 / SDW2 / SDW3
29	E9-Z4026	1/2/3	REAR LINER SDW1 / SDW2 / SDW3
30	2D-Y6177	1/2/3	FULL SIZE PAN 6" SDW1 / SDW2 / SDW3
31	2R-Z4054	1/2/3	KNOB SDW1 / SDW2 / SDW3

**IMPORTANT: WHEN ORDERING, SPECIFY VOLTAGE OR TYPE GAS DESIRED  
INCLUDE MODEL AND SERIAL NUMBER**

PAGE 1  
OF 2

Some items are included for illustrative purposes only and in certain instances may not be available.



**Star International Holdings Inc. Company**

# PARTS LIST

May 7, 2010, Rev. C

MODEL SDW1, SDW2, SDW3, SDW1W, SDW2W Drawer Warmers

Key Number	Part Number	Number Per Unit	Description and Model Designation
32	E9-DW0030	1/2/3	DRAWER FRONT COMPLETE SDW1 / SDW2 / SDW3
33	E9-DW0031	1/2/3	DRAWER FRAME W/ROLLERS SDW1 / SDW2 / SDW3
	E9-DW0042	1/2	DRAWER FRAME W/ROLLERS SDW1W / SDW2W
32/33	E9-DW0029	1/2/3	DRAWER ASSY COMPLETE SDW1 / SDW2 / SDW3
	E9-DW0041	1/2	DRAWER ASSY COMPLETE SDW1W / SDW2W
34	E9-Z7719	1/2	ELEMENT COVER SDW1W / SDW2W
N/A	E9-Z4013	1	INSULATION SIDE SDW1
N/A	E9-Z4092	1	INSULATION SIDE SDW2
N/A	E9-Z4100	1	INSULATION SIDE SDW3
N/A	E9-Z4014	1	INSULATION REAR SDW1
N/A	E9-Z4093	1	INSULATION REAR SDW2
N/A	E9-Z4101	1	INSULATION REAR SDW3
N/A	E9-Z4012	2	INSULATION TOP/BOTTOM
N/A	E9-Z4015	1/2/3	INSULATION DRAWER FRONT SDW1 / SDW2 / SDW3

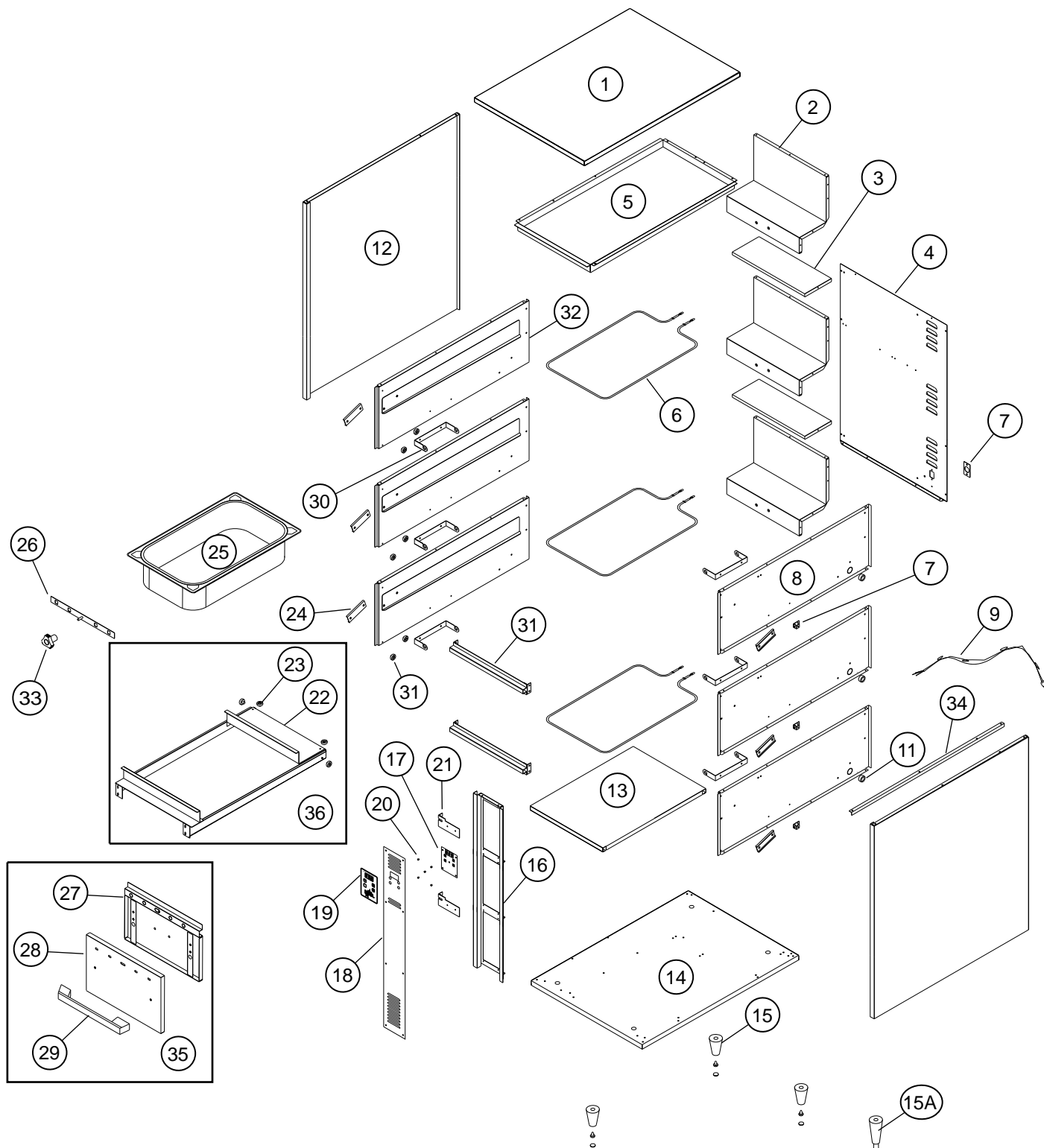
**IMPORTANT: WHEN ORDERING, SPECIFY VOLTAGE OR TYPE GAS DESIRED  
INCLUDE MODEL AND SERIAL NUMBER**

PAGE 2  
OF 2

Some items are included for illustrative purposes only and in certain instances may not be available.



**Star International Holdings Inc. Company**



DRAWER WARMER  
MODEL SDW3N SHOWN

SOME ITEMS ARE INCLUDED FOR  
ILLUSTRATIVE PURPOSES ONLY AND IN  
CERTAIN INSTANCES MAY NOT BE AVAILABLE

**MODEL - SDW1N, SDW2N, SDW3N**



**STAR MANUFACTURING INTERNATIONAL, INC.**

SK1838

REV. A

4/17/2001

# PARTS LIST

June 9, 2010, Rev. C

MODEL SDW1N, SDW2N, SDW3N Drawer Warmers

Key Number	Part Number	Number Per Unit	Description and Model Designation
1	E9-Z3999	1	TOP PANEL
2	E9-Z3996	1/2/3	REAR LINER SDW1N / SDW2N / SDW3N
3	E9-Z4077	1	REAR LINER COVER SDW2N, SDW3N
4	E9-Z3998	1	BACK PANEL SDW1N
	E9-Z4072	1	BACK PANEL SDW2N
	E9-Z4104	1	BACK PANEL SDW3N
5	E9-Z3997	1	TOP LINER
6	2N-Z4057	1/2/3	HEATING ELEMENT 120V SDW1N / SDW2N / SDW3N
	2N-Z4154	1/2/3	HEATING ELEMENT 230V SDW1N / SDW2N / SDW3N
7	E9-Z4027	1	ADAPTER PLATE 120V
	2E-Y9227	1	INLET 230V
	2K-Y2967	1	CORD BUSHING 120V
8	E9-DW0006	1/2/3	LINER ASSEMBLY RIGHT SDW1N / SDW2N / SDW3N
9	A5-250027	1	LEAD IN CORD 120V
	2E-Z0512	1	LEAD IN CORD 230V
10	E9-Z3986	1/2/3	SENSOR BRACKET SDW1N / SDW2N / SDW3N
11	2K-8043	1/2/3	BUSHING SDW1N / SDW2N / SDW3N
12	E9-Z4000	2	SIDE PANEL SDW1N
	E9-Z4073	2	SIDE PANEL SDW2N
	E9-Z4105	2	SIDE PANEL SDW3N
13	E9-Z3976	1	BOTTOM LINER
14	E9-DW0001	1	BOTTOM ASSEMBLY
15	2R-Z5846	4	FOOT
15A	2R-Y5092	4	4" FOOT SDW2N, SDW3N
16	E9-Z4001	1	FRONT PANEL SDW1N
	E9-Z4088	1	FRONT PANEL SDW2N
	E9-Z4096	1	FRONT PANEL SDW3N
17	2E-Z4062	1	CONTROL W/ SENSOR 120V
	2E-Z4153	1	CONTROL W/ SENSOR 230V
18	E9-DW0012	1	CONTROL PANEL ASSY SDW1N
	E9-DW0020	1	CONTROL PANEL ASSY SDW2N
	E9-DW0022	1	CONTROL PANEL ASSY 120V SDW3N
19	2M-Z4067	1	GRAPHICS PANEL SDW1N
20	2K-Z1971	5	CONTROL BOARD SPACER
21	E9-Z4078	1/2	GUSSET SDW2N / SDW3N
22	E9-DW0007	1/2/3	DRAWER ASSEMBLY SDW1N / SDW2N / SDW3N
23	2P-Z0315	8/16/24	GUIDE BEARING SDW1N / SDW2N / SDW3N
NI	2C-1810	8/16/24	WASHER SDW1N / SDW2N / SDW3N
NI	2C-Z0498	8/16/24	NUT SDW1N / SDW2N / SDW3N
24	E9-Z3987	2/4/6	BEARING STIFFENER SDW1N / SDW2N / SDW3N
25	2D-Y6177	1/2/3	FULL SIZE PAN 6" SDW1N / SDW2N / SDW3N
26	E9-DW0009	1/2/3	DAMPER ASSEMBLY SDW1N / SDW2N / SDW3N
27	E9-DW0008	1/2/3	DRAWER LINER ASSEMBLY SDW1N / SDW2N / SDW3N
28	E9-Z4049	1/2/3	DRAWER FRONT SDW1N / SDW2N / SDW3N
29	2R-Y7557	1/2/3	DRAWER PULL SDW1N / SDW2N / SDW3N
30	E9-Z3985	2/4/6	ELEMENT BRACKET SDW1N / SDW2N / SDW3N
31	E9-DW0019	1/2	FRONT TRIM ASSEMBLY SDW2N / SDW3N
32	E9-DW0005	1/2/3	LINER ASSEMBLY LT SDW1N / SDW2N / SDW3N
33	2R-Z4054	1/2/3	KNOB SDW1N / SDW2N / SDW3N

**IMPORTANT: WHEN ORDERING, SPECIFY VOLTAGE OR TYPE GAS DESIRED  
INCLUDE MODEL AND SERIAL NUMBER**

PAGE 1  
OF 2

Some items are included for illustrative purposes only and in certain instances may not be available.



**Star International Holdings Inc. Company**

# PARTS LIST

June 9, 2010, Rev. C

MODEL SDW1N, SDW2N, SDW3N Drawer Warmers

Key Number	Part Number	Number Per Unit	Description and Model Designation
34	E9-Z4260	1	SIDE STIFFENER
35	E9-DW0033	1/2/3	DRAWER FRONT COMPLETE SDW1N / SDW2N / SDW3N
36	E9-DW0034	1/2/3	DRAWER FRAME W/ROLLERS SDW1N / SDW2N / SDW3N
35/36	E9-DW0032	1/2/3	DRAWER ASSY COMPLETE SDW1N / SDW2N / SDW3N
N/A	E9-Z3978	1	INSULATION SIDE SDW1N
N/A	E9-Z4079	1	INSULATION SIDE SDW2N
N/A	E9-Z4107	1	INSULATION SIDE SDW3N
N/A	E9-Z3979	1	INSULATION REAR SDW1N
N/A	E9-Z4080	1	INSULATION REAR SDW2N
N/A	E9-Z4108	1	INSULATION REAR SDW3N
N/A	E9-Z3981	1	INSULATION TOP
N/A	E9-Z3977	1	INSULATION BOTTOM
N/A	E9-Z3980	1/2/3	INSULATION DRAWER FRONT SDW1N / SDW2N / SDW3N

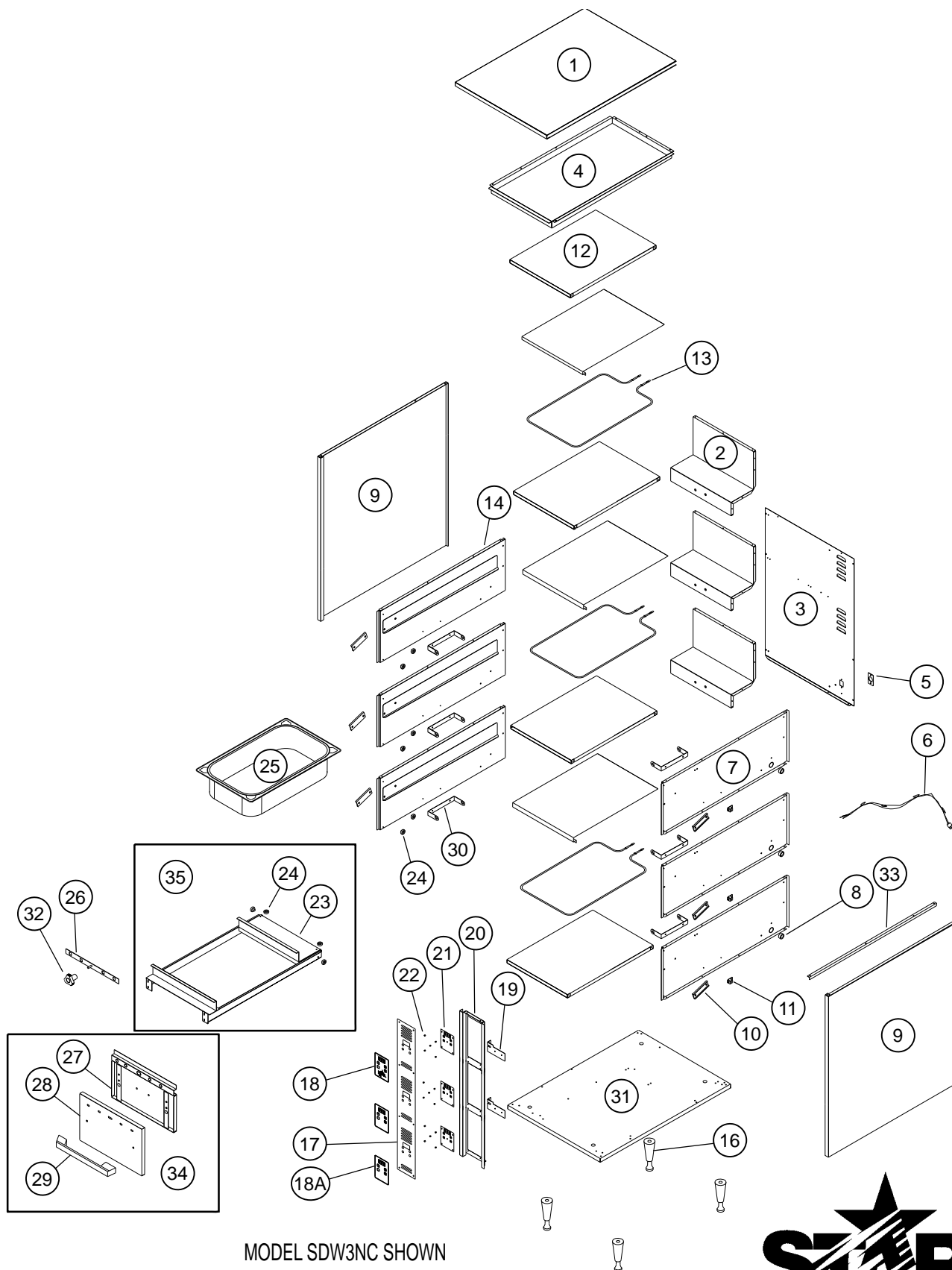
**IMPORTANT: WHEN ORDERING, SPECIFY VOLTAGE OR TYPE GAS DESIRED  
INCLUDE MODEL AND SERIAL NUMBER**

PAGE 2  
OF 2

Some items are included for illustrative purposes only and in certain instances may not be available.



**Star International Holdings Inc. Company**



MODEL SDW3NC SHOWN  
DRAWER WARMER

SOME ITEMS ARE INCLUDED FOR  
ILLUSTRATIVE PURPOSES ONLY AND IN  
CERTAIN INSTANCES MAY NOT BE AVAILABLE

MODEL - SDW2NC, SDW3NC



STAR MANUFACTURING INTERNATIONAL, INC.

SK1839

REV. A

4/17/01



# PARTS LIST

May 7, 2010, Rev. C

MODEL SDW2NC, SDW3NC Drawer Warmers

Key Number	Part Number	Number Per Unit	Description and Model Designation
1	E9-Z3999	1	TOP PANEL
2	E9-Z3996	2/3	REAR LINER SDW2NC / SDW3NC
3	E9-Z4072	1	BACK PANEL SDW2NC
	E9-Z4104	1	BACK PANEL SDW3NC
4	E9-Z3997	1	TOP LINER
5	E9-Z4027	1	ADAPTER PLATE 120V
	2K-Y2967	1	CORD BUSHING 120V
	2E-Y9227	1	INLET 230V
6	A5-250027	1	LEAD IN CORD 120V
	2E-Z0512	1	LEAD IN CORD 230V
7	E9-DW0006	2/3	LINER ASSEMBLY RIGHT SDW2NC / SDW3NC
8	2K-8043	2/3	BUSHING SDW2NC / SDW3NC
9	E9-Z4073	2	SIDE PANEL SDW2NC
	E9-Z4105	2	SIDE PANEL SDW3NC
10	E9-Z3987	4/6	BEARING STIFFENER SDW2NC / SDW3NC
11	E9-Z3986	2/3	SENSOR BRACKET SDW2NC / SDW3NC
12	E9-Z3976	2/3	BOTTOM LINER SDW2NC / SDW3NC
13	2N-Z4057	2/3	HEATING ELEMENT 120V SDW2NC / SDW3NC
	2N-Z4154	2/3	HEATING ELEMENT 230V SDW2NC / SDW3NC
14	E9-DW0005	2/3	LINER ASSEMBLY LT SDW2NC / SDW3NC
15	E9-Z4114	1/2	DIVIDER PANEL NARROW SDW2NC / SDW3NC
16	2R-Y5092	4	4" FOOT
17	EP-DW0023	1	CONTROL PANEL ASSY SDW2NC
	E9-DW0024	1	CONTROL PANEL ASSY SDW3NC
18	2M-Z4247	1/2	GRAPHICS PANEL SDW2NC / SDW3NC
19	E9-Z4078	1/2	GUSSET SDW2NC / SDW3NC
20	E9-Z4088	1	FRONT PANEL SDW2NC
	E9-Z4096	1	FRONT PANEL SDW3NC
21	2E-Z4062	2/3	CONTROL W/ SENSOR 120V SDW2NC / SDW3NC
	2E-Z4153	2/3	CONTROL W/ SENSOR 230V SDW2NC / SDW3NC
22	2K-Z1971	10/15	CONTROL BOARD SPACER SDW2NC / SDW3NC
23	E9-DW0007	2/3	DRAWER ASSEMBLY SDW2NC / SDW3NC
24	2P-Z0315	16/24	GUIDE BEARING SDW2NC / SDW3NC
NI	2C-1810	16/24	WASHER SDW2NC / SDW3NC
NI	2C-Z0498	16/24	NUT SDW2NC / SDW3NC
25	2D-Y6177	2/3	FULL SIZE PAN 6" SDW2NC / SDW3NC
26	E9-DW0009	2/3	DAMPER ASSEMBLY SDW2NC / SDW3NC
27	E9-DW0008	2/3	DRAWER LINER ASSEMBLY SDW2NC / SDW3NC
28	E9-Z4049	2/3	DRAWER FRONT SDW2NC / SDW3NC
29	2R-Y7557	2/3	DRAWER PULL SDW2NC / SDW3NC
30	E9-Z3985	4/6	ELEMENT BRACKET SDW2NC / SDW3NC
31	E9-DW0001	1	BOTTOM ASSEMBLY
32	2R-Z4054	2/3	KNOB SDW2NC / SDW3NC
33	E9-Z4260	1	SIDE STIFFENER
34	E9-DW0033	2/3	DRAWER FRONT ASSY COMPLETE SDW2NC / SDW3NC
35	E9-DW0034	2/3	DRAWER FRAME W/ROLLERS SDW2NC / SDW3NC
34/35	E9-DW0032	2/3	DRAWER ASSY COMPLETE SDW2NC / SDW3NC
N/A	E9-Z4079	1	INSULATION SIDE SDW2NC
N/A	E9-Z4107	1	INSULATION SIDE SDW3NC
N/A	E9-Z4080	1	INSULATION REAR SDW2NC
N/A	E9-Z4108	1	INSULATION REAR SDW3NC
N/A	E9-Z3981	1	INSULATION TOP
N/A	E9-Z3977	2/3	INSULATION BOTTOM SDW2NC / SDW3NC
N/A	E9-Z3980	2/3	INSULATION DRAWER FRONT SDW2NC / SDW3NC

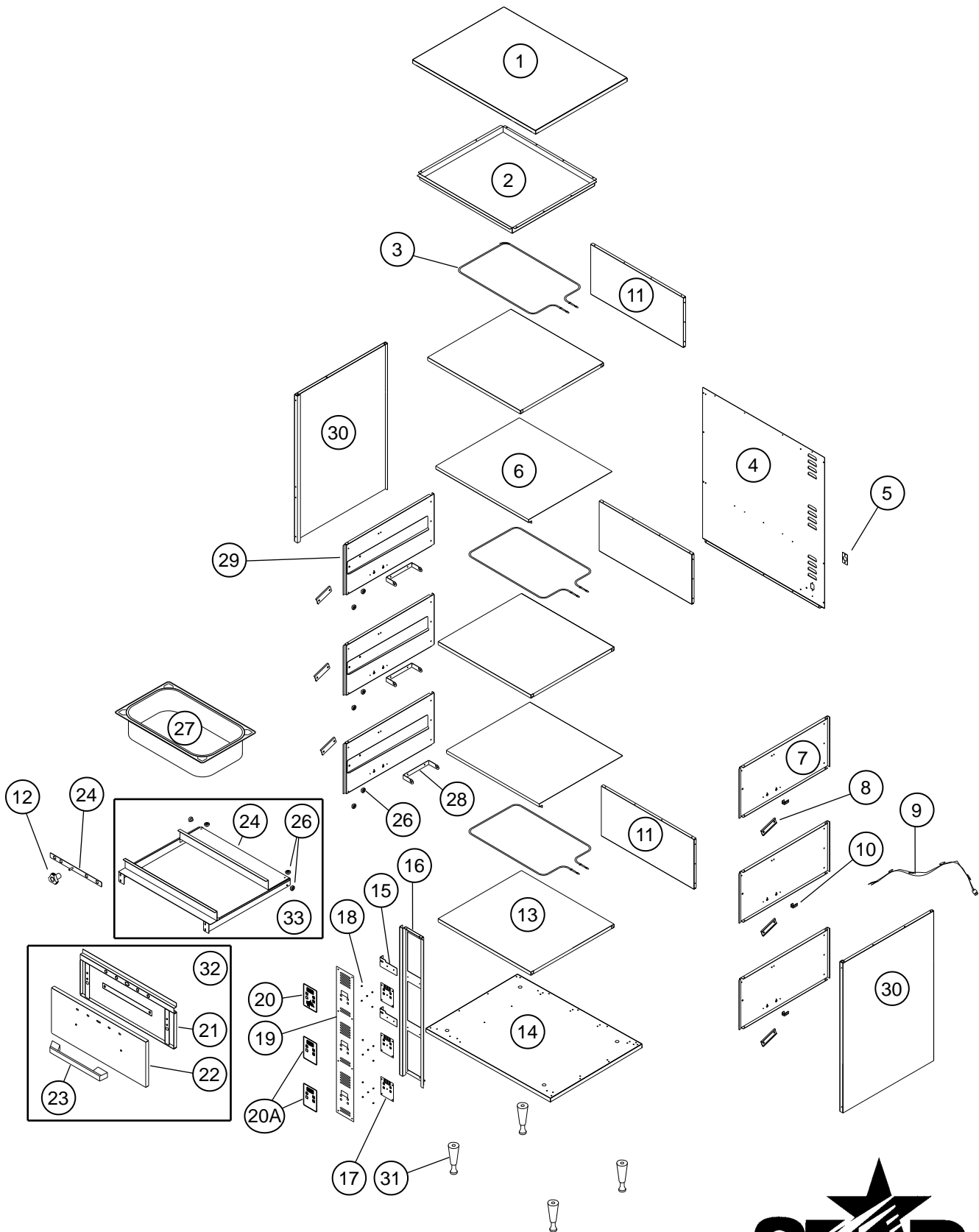
**IMPORTANT: WHEN ORDERING, SPECIFY VOLTAGE OR TYPE GAS DESIRED  
INCLUDE MODEL AND SERIAL NUMBER**

PAGE 1  
OF 1

Some items are included for illustrative purposes only and in certain instances may not be available.



**Star International Holdings Inc. Company**



MODEL SDW3C SHOWN  
DRAWER WARMER



SOME ITEMS ARE INCLUDED FOR  
ILLUSTRATIVE PURPOSES ONLY AND IN  
CERTAIN INSTANCES MAY NOT BE AVAILABLE

**MODEL - SDW2C, SDW3C**

**STAR MANUFACTURING INTERNATIONAL, INC.**

SK1841

REV. A

4/17/01

# PARTS LIST

May 7, 2010, Rev. C

MODEL SDW2C, SDW3C Drawer Warmers

Key Number	Part Number	Number Per Unit	Description and Model Designation
1	E9-Z4031	1	TOP PANEL
2	E9-Z4022	1	TOP LINER
3	2N-Z4057	2/3	HEATING ELEMENT 120V
	2N-Z4154	2/3	HEATING ELEMENT 230V
4	E9-Z4089	1	BACK PANEL
	E9-Z4097	1	BACK PANEL
5	E9-Z4027	1	ADAPTER PLATE 120V
	2K-Y2967	1	CORD BUSHING 120V
	2E-Y9227	1	INLET 230V
6	E9-Z4113	1/2	DIVIDER PANEL
7	E9-DW0004	2/3	LINER ASSEMBLY RIGHT
8	E9-Z3987	4/6	BEARING STIFFENER
9	A5-250027	1	LEAD IN CORD 120V
	2E-Z0512	1	LEAD IN CORD 230V
10	E9-Z3986	2/3	SENSOR BRACKET
11	E9-Z4026	2/3	REAR LINER
12	2R-Z4054	2/3	KNOB
13	E9-Z4009	2/3	BOTTOM LINER
14	E9-DW0002	1	BOTTOM ASSEMBLY
15	E9-Z4078	1/2	GUSSET
16	EP-DW0023	1	CONTROL PANEL ASSY
	E9-DW0024	1	CONTROL PANEL ASSY
17	2E-Z4062	2/3	CONTROL W/ SENSOR 120V
	2E-Z4153	2/3	CONTROL W/ SENSOR 230V
18	2K-Z1971	10/15	CONTROL BOARD SPACER
19	E9-Z4088	1	FRONT PANEL
	E9-Z4096	1	FRONT PANEL
20	2M-Z4247	1/2	GRAPHICS PANEL
21	E9-DW0011	2/3	DRAWER LINER ASSEMBLY
22	E9-Z4050	2/3	DRAWER FRONT
23	2R-Y7557	2/3	DRAWER PULL
24	E9-DW0009	2/3	DAMPER ASSEMBLY
25	E9-DW0010	2/3	DRAWER ASSEMBLY
26	2P-Z0315	16/24	GUIDE BEARING
NI	2C-1810	16/24	WASHER
NI	2C-Z0498	16/24	NUT
27	2D-Y6177	2/3	FULL SIZE PAN 6"
28	E9-Z4016	2/3	ELEMENT BRACKET
29	E9-DW0003	2/3	LINER ASSEMBLY LT
30	E9-Z4090	2	SIDE PANEL
	E9-Z4098	2	SIDE PANEL
31	2R-Y5092	4	4" FOOT
32	E9-DW0030	2/3	DRAWER FRONT COMPLETE
33	E9-DW0031	2/3	DRAWER FRAME W/ROLLERS
32/33	E9-DW0029	2/3	DRAWER ASSEMBLY COMPLETE
N/A	E9-Z4092	1	INSULATION SIDE
N/A	E9-Z4100	1	INSULATION SIDE
N/A	E9-Z4093	1	INSULATION REAR
N/A	E9-Z4101	1	INSULATION REAR
N/A	E9-Z4012	3/4	INSULATION TOP/BOTTOM
N/A	E9-Z4015	2/3	INSULATION DRAWER FRONT

**IMPORTANT: WHEN ORDERING, SPECIFY VOLTAGE OR TYPE GAS DESIRED  
INCLUDE MODEL AND SERIAL NUMBER**

**PAGE** 1  
**OF** 1

Some items are included for illustrative purposes only and in certain instances may not be available.



**Star International Holdings Inc. Company**

STAR INTERNATIONAL HOLDINGS INC. COMPANY  
Star - Holman - Lang - Wells - Bloomfield - Toastmaster  
10 Sunnen Drive, St. Louis, MO 63143 U.S.A.  
(800) 807-9054 (314) 781-2777  
Parts & Service (800) 807-9054  
[www.star-mfg.com](http://www.star-mfg.com)