

STAR[®] **DISPLAY** **MERCHANDISERS**

MODEL
12MC
15MC
18MCP

Installation and Operation Instructions

2M-Z5378 Rev.I 2/23/2007



SAFETY SYMBOL



These symbols are intended to alert the user to the presence of important operating and maintenance instructions in the manual accompanying the appliance.

RETAIN THIS MANUAL FOR FUTURE REFERENCE

NOTICE

Using any part other than genuine Star factory supplied parts relieves the manufacturer of all liability.

Star reserves the right to change specifications and product design without notice. Such revisions do not entitle the buyer to corresponding changes, improvements, additions or replacements for previously purchased equipment.

Due to periodic changes in designs, methods, procedures, policies and regulations, the specifications contained in this sheet are subject to change without notice. While Star Manufacturing exercises good faith efforts to provide information that is accurate, we are not responsible for errors or omissions in information provided or conclusions reached as a result of using the specifications. By using the information provided, the user assumes all risks in connection with such use.

MAINTENANCE AND REPAIRS

Contact your local authorized service agent for service or required maintenance. Please record the model number, serial number, voltage and purchase date in the area below and have it ready when you call to ensure faster service.

Model No. _____

Serial No. _____

Voltage _____

Purchase Date _____

Authorized Service Agent

Reference the listing provided with the unit

or

for an updated listing go to:

Website: www.star-mfg.com
E-mail Service@star-mfg.com
Telephone: (800) 807-9054 Local (314) 781-2777

The Star Service Help Desk

Business Hours: 8:00 am to 4:30 p.m. Central Standard Time

Telephone: (800) 807-9054 Local (314) 781-2777

Fax: (800) 396-2677 Local (314) 781-2714

E-mail Parts@star-mfg.com
Service@star-mfg.com
Warranty@star-mfg.com

Website: www.star-mfg.com

Mailing Address: Star Manufacturing International Inc.
10 Sunnen Drive
St. Louis, MO 63143
U.S.A

SPECIFICATIONS

12MC-120V

Capacity: Twelve 4" diameter cookies, Fourteen 7 ounce breakfast burritos
Electrical: 120V, 60H, single phase, 475 Watts, 3.96 Amps
Dimensions: 12-1/2" W x 13-5/8" D x 18-7/8" H
(31.8 cm x 34.7 cm x 47.9 cm)
Weight: Approximately 23.5 lbs. (10.66kg)

12MCPT-120V

Capacity: Twelve 4" diameter cookies, Fourteen 7 ounce breakfast burritos
Electrical: 120V, 60H, single phase, 475 Watts, 3.96 Amps
Dimensions: 12-1/2" W x 14-3/4" D x 18-7/8" H
(31.8 cm x 37.5 cm x 47.9 cm)
Weight: Approximately 25 lbs. (11.34kg)

15MC-120V, 8D-15MCMR-120V

Capacity: Twenty-seven 4" diameter cookies, Twenty-one 7 ounce breakfast burritos
Electrical: 120V, 60H, single phase, 625 Watts, 5.21 Amps
Dimensions: 15" W x 16-1/8" D x 24-7/8" H
(38.1 cm x 40.9 cm x 63.2 cm)
Weight: Approximately 35.5 lbs. (16.10kg)

15MCPT-120V

Capacity: Twenty-seven 4" diameter cookies, Twenty-one 7 ounce breakfast burritos
Electrical: 120V, 60H, single phase, 625 Watts, 5.21 Amps
Dimensions: 15" W x 17-1/4" D x 24-7/8" H
(38.1 cm x 43.8 cm x 63.2 cm)
Weight: Approximately 37 lbs. (16.78kg)

15MCN-120V

Capacity: 30 Corndogs
Electrical: 120V, 60H, single phase, 625 Watts, 5.21 Amps
Dimensions: 15" W x 16-1/8" D x 24-7/8" H
(38.1 cm x 40.9 cm x 63.2 cm)
Weight: Approximately 35.5 lbs. (16.10kg)

18MCP-120V

Capacity: Two 16" pizzas
Electrical: 120V, 60H, single phase, 250 Watts, 2.08 Amps
Dimensions: 18-1/2" W x 19-5/8" D x 24-7/8" H
(47 cm x 49.8 cm x 63.2 cm)
Weight: Approximately 42 lbs. (19.05kg)

18MCPT-120V

Capacity: Two 16" pizzas
Electrical: 120V, 60H, single phase, 250 Watts, 2.08 Amps
Dimensions: 18-1/2" W x 20-3/4" D x 24-7/8" H
(47 cm x 52.7 cm x 63.2 cm)
Weight: Approximately 44 lbs. (19.96kg)

12MC-230V

Capacity: Twelve 4" diameter cookies, Fourteen 7 ounce breakfast burritos
Electrical: 230V, 50/60H, single phase, 475 Watts, 2.07 Amps
Dimensions: 12-1/2" W x 13-5/8" D x 18-7/8" H
(31.8 cm x 34.7 cm x 47.9 cm)
Weight: Approximately 23.5 lbs. (10.66kg)

12MCPT-230V

Capacity: Twelve 4" diameter cookies, Fourteen 7 ounce breakfast burritos
Electrical: 230V, 50/60H, single phase, 475 Watts, 2.07 Amps
Dimensions: 12-1/2" W x 14-3/4" D x 18-7/8" H
(31.8 cm x 37.5 cm x 47.9 cm)
Weight: Approximately 25 lbs. (11.34kg)

15MC-230V

Capacity: Twenty-seven 4" diameter cookies, Twenty-one 7 ounce breakfast burritos
Electrical: 230V, 50/60H, single phase, 625 Watts, 2.72 Amps
Dimensions: 15" W x 16-1/8" D x 24-7/8" H
(38.1 cm x 40.9 cm x 63.2 cm)
Weight: Approximately 35.5 lbs. (16.10kg)

15MCPT-230V

Capacity: Twenty-seven 4" diameter cookies, Twenty-one 7 ounce breakfast burritos
Electrical: 230V, 50/60H, single phase, 625 Watts, 2.72 Amps
Dimensions: 15" W x 17-1/4" D x 24-7/8" H
(38.1 cm x 43.8 cm x 63.2 cm)
Weight: Approximately 37 lbs. (16.78kg)

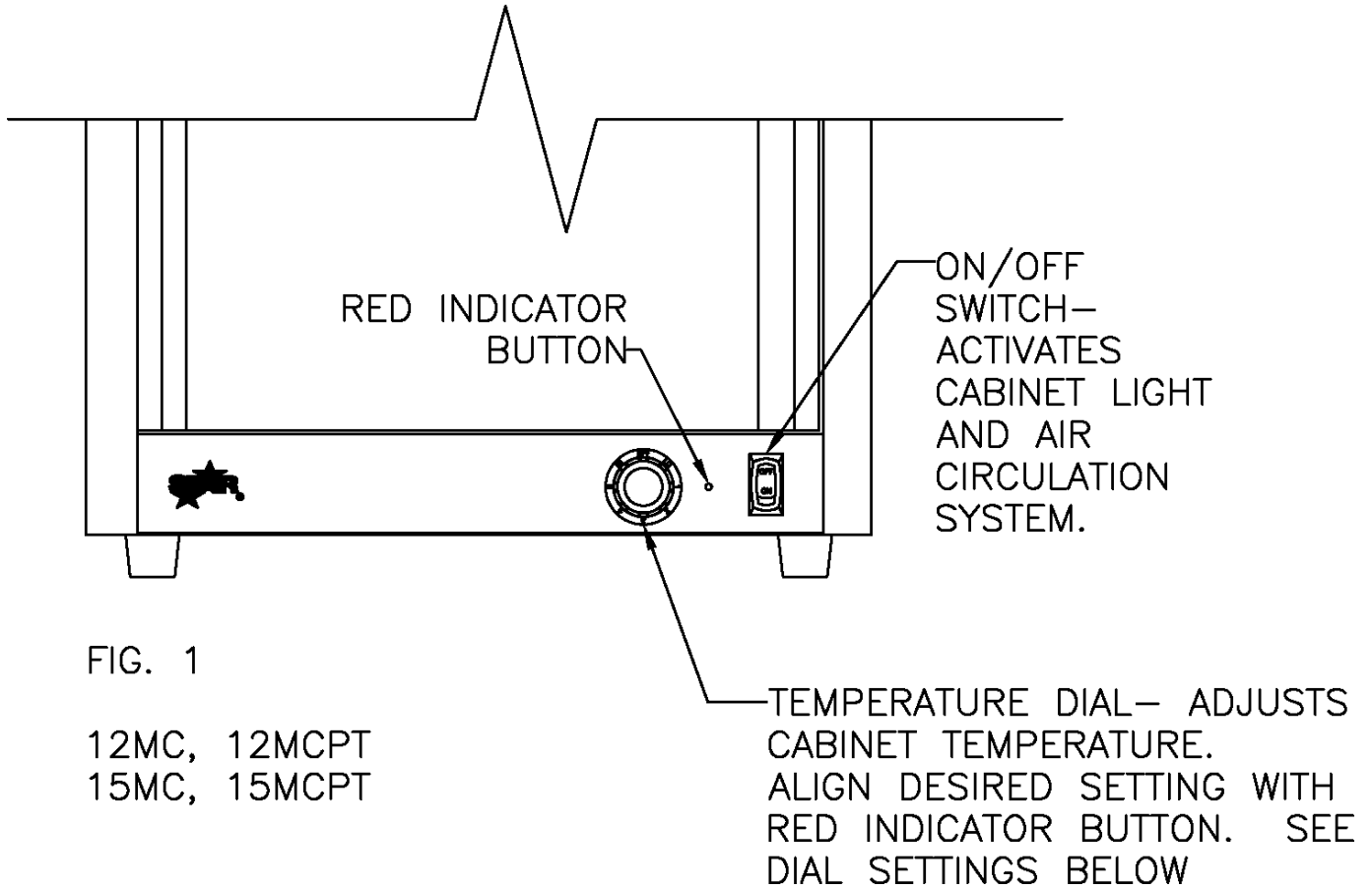
18MCP-230V

Capacity: Two 16" pizzas
Electrical: 230V, 50/60H, single phase, 250 Watts, 1.04 Amps
Dimensions: 18-1/2" W x 19-5/8" D x 24-7/8" H
(47 cm x 49.8 cm x 63.2 cm)
Weight: Approximately 42 lbs. (19.05kg)

18MCPT-230V

Capacity: Two 16" pizzas
Electrical: 230V, 50/60H, single phase, 250 Watts, 1.04 Amps
Dimensions: 18-1/2" W x 20-3/4" D x 24-7/8" H
(47 cm x 52.7 cm x 63.2 cm)
Weight: Approximately 44 lbs. (19.96kg)

RECOMMENDED DIAL SETTINGS

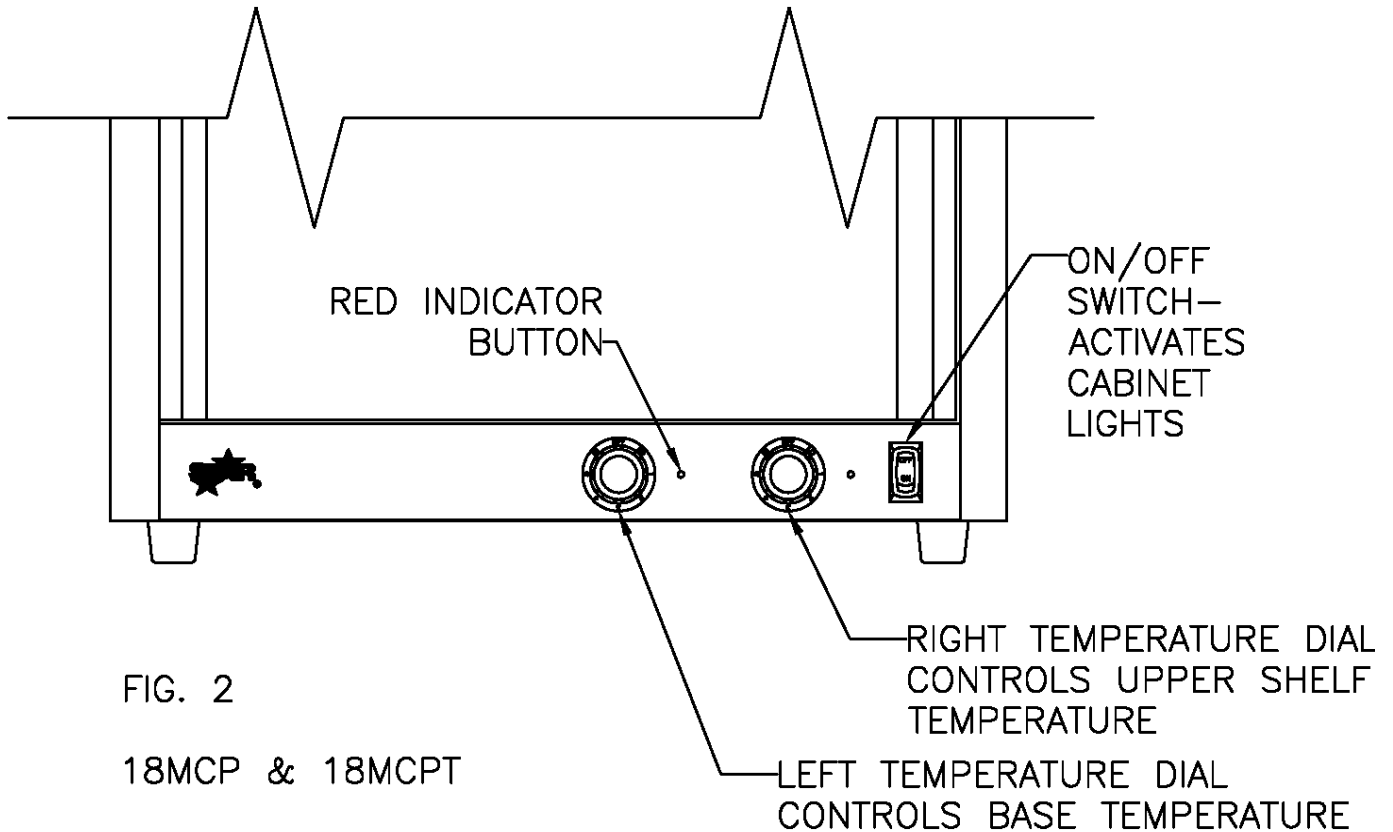


DIAL SETTING FOR DESIRED TEMPERATURE (APPROXIMATE)

All settings are recommendations only and could vary depending on product preparation, cooking time, and internal food temperature.

<u>12MC, 12MCPT</u>		<u>15MC, 15MCPT</u>	
Low - 1	105°F	Low - 1	105°F
2 - 3	110°F	2	115°F
4	130°F	3	120°F
5	170°F	4	130°F
High	200°F	5	150°F
		High	195°F

RECOMMENDED DIAL SETTINGS



DIAL SETTING FOR DESIRED TEMPERATURE (APPROXIMATE)

All settings are recommendations only and could vary depending on product preparation, cooking time, and internal food temperature.

	<u>Base</u>		<u>Upper Shelf</u>
Low	110°F	Low	135°F
1	110°F	1	140°F
2	130°F	2	150°F
3	145°F	3	160°F
4	170°F	4	185°F
5	215°F	5	215°F
High	220°F	High	235°F



GENERAL INSTALLATION DATA

CAUTION

This equipment is designed and sold for commercial use only by personnel trained and experienced in its operation and is not sold for consumer use in and around the home nor for use directly by the general public in food service locations.

Before using your new equipment, read and understand all the instructions & labels associated with the unit prior to putting it into operation. Make sure all people associated with its use understand the units operation & safety before they use the unit.

All shipping containers should be checked for freight damage both visible and concealed. This unit has been tested and carefully packaged to insure delivery of your unit in perfect condition. If equipment is received in damaged condition, either apparent or concealed, a claim must be made with the delivering carrier.

Concealed damage or loss - if damage or loss is not apparent until after equipment is unpacked, a request for inspection of concealed damage must be made with carrier within 15 days. Be certain to retain all contents plus external and internal packaging materials for inspection. The carrier will make an inspection and will supply necessary claim forms.

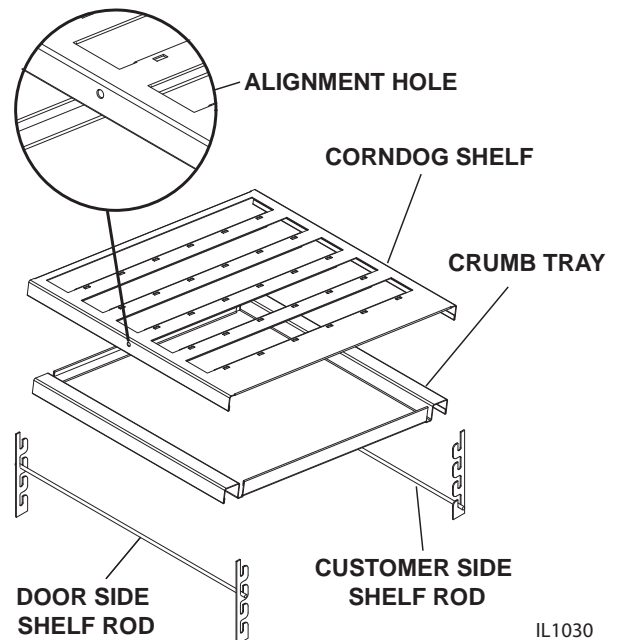
INSTALLATION

This merchandising cabinet is equipped for the voltage and wattage indicated on the nameplate mounted on the back of the unit and is designed for use on alternating current (AC) only.

CORN DOG SHELF INSTALLATION

To Ensure shelf works properly follow these steps.

1. Place the front (customer side) shelf rod on the bottom setting.
2. Place the rear (door side) shelf rod on the third setting.
3. Install the crumb tray so it sits on the shelf rods.
4. Position the corn dog shelf so the alignment hole faces the door (as shown in Fig 1).
5. This configuration will allow the corn dogs to stand straight up.



IL1030

FIG. 1 CORNDOG SHELF INSTALLATION



WARNING

DO NOT CONNECT TO DIRECT CURRENT (DC).

GENERAL OPERATING INSTRUCTIONS

1. Ensure cabinet is plugged into the proper voltage receptacle prior to turning on.
2. Pre-heat cabinet with the door closed until the desired temperature setting is reached (15-60 minutes depending on the temperature setting and the merchandiser model).
3. Set temperature according to the tables on pages 5 and 6.
4. Load product onto shelves.
5. Monitor cabinet temperature via the thermometer.
Check food product temperature with an approved food thermometer.



CAUTION

DO NOT BLOCK VENT HOLES ON TOP OF THE CABINET (12MC/15MC)

CLEANING INSTRUCTIONS

1. Disconnect electrical cord before cleaning the cabinet.
2. To maintain finish and shine of unit, wipe daily with a damp cloth and mild soap. Do not use harsh detergents or scouring pads.
3. Daily cleaning of inside glass, bottom pan and racking system with a damp cloth is recommended.
4. Daily clean shelves and crumb trays (some models) using mild detergent.

MAINTENANCE AND REPAIRS

Contact the factory, a service representative or a local service company for service or required maintenance.

Visit our Website at: www.star-mfg.com

Email: service@star-mfg.com

THOROUGHLY INSPECT YOUR UNIT ON ARRIVAL

This unit has been tested for proper operation before leaving our plant to insure delivery of your unit in perfect condition. However, there are instances in which the unit may be damaged in transit. In the event you discover any type of damage to your product upon receipt, you must immediately contact the transportation company who delivered the item to you and initiate your claim with same. If this procedure is not followed, it may affect the warranty status of the unit.

LIMITED EQUIPMENT WARRANTY

All workmanship and material in Star products have a one (1) year limited warranty on parts & labor in the United States and Canada. Such warranty is limited to the original purchaser only and shall be effective from the date the equipment is placed in service. Star's obligation under this warranty is limited to the repair of defects without charge, by the factory authorized service agency or one of its sub-agencies. Models that are considered portable (*see below*) should be taken to the closest Star service agency, transportation prepaid.

- > Star will not assume any responsibility for loss of revenue.
- > On all shipments outside the United States and Canada, see International Warranty.
- * The warranty period for the JetStar six (6) ounce & Super JetStar eight (8) ounce series popcorn machines is two (2) years.
- * The warranty period for the Chrome-Max Griddles is five (5) years on the griddle surface. See detailed warranty provided with unit.
- * The warranty period for Teflon/Dura-Tec coatings is one year under normal use and reasonable care. This warranty does not apply if damage occurs to Teflon/Dura-Tec coatings from improper cleaning, maintenance, use of metallic utensils, or abrasive cleaners. This warranty does not apply to the "non-stick" properties of such materials.
- > This warranty does not apply to "Special Products" but to regular catalog items only. Star's warranty on "Special Products" is six (6) months on parts and ninety (90) days on labor.
- > This warranty does not apply to any item that is disassembled or tampered with for any purpose other than repair by a Star Authorized Service Center or the Service Center's sub-agency.
- > This warranty does not apply if damage occurs from improper installation, misuse, wrong voltage, wrong gas or operated contrary to the Installation and Operating instructions.
- > This warranty is not valid on Conveyor Ovens *unless* a "start-up/check-out" has been performed by a Factory Authorized Technician.

PARTS WARRANTY

Parts that are sold to repair out of warranty equipment are warranted for ninety (90) days. The part only is warranted. Labor to replace the part is chargeable to the customer.

SERVICES NOT COVERED BY WARRANTY

- | | |
|--|---|
| 1. Travel time and mileage rendered beyond the 50 mile radius limit | 10. Voltage conversions |
| 2. Mileage and travel time on portable equipment (<i>see below</i>) | 11. Gas conversions |
| 3. Labor to replace such items that can be replaced easily during a daily cleaning routine, ie; removable kettles on fryers, knobs, grease drawers on griddles, etc. | 12. Pilot light adjustment |
| 4. Installation of equipment | 13. Miscellaneous adjustments |
| 5. Damages due to improper installation | 14. Thermostat calibration and by-pass adjustment |
| 6. Damages from abuse or misuse | 15. Resetting of circuit breakers or safety controls or reset buttons |
| 7. Operated contrary to the Operating and Installation Instructions | 16. Replacement of bulbs |
| 8. Cleaning of equipment | 17. Replacement of fuses |
| 9. Seasoning of griddle plates | 18. Repair of damage created during transit, delivery, & installation OR created by acts of God |

PORTABLE EQUIPMENT

Star will not honor service bills that include travel time and mileage charges for servicing any products considered "Portable" including items listed below. These products should be taken to the Service Agency for repair:

- * The Model 510FD Fryer.
- * The Model J4R, 4 oz. Popcorn Machine.
- * The Model 518CMA & 526CMA Cheese Melter.
- * The Model 12MC & 15MC & 18MCP Hot Food Merchandisers.
- * The Model 12NCPW & 15NCPW Nacho Chip/Popcorn Warmer.
- * All Hot Dog Equipment **except Roller Grills & Drawer Bun Warmers.**
- * All Nacho Cheese Warmers **except Model 11WLA Series Nacho Cheese Warmer.**
- * All Condiment Dispensers **except the Model HPDE, & SPDE Series Dispenser.**
- * All Specialty Food Warmers **except Model 130R, 11RW Series, and 11WSA Series.**
- * All QCS/RCS Series Toasters **except Model QCS3 & RCS3 Series.**

ALL:

- * Pop-Up Toasters
- * Butter Dispensers
- * Pretzel Merchandisers
- * Pastry Display Cabinets
- * Nacho Chip Merchandisers
- * Accessories of any kind
- * Sneeze Guards
- * Pizza Ovens
- * Heat Lamps
- * Pumps

The foregoing warranty is in lieu of any and all other warranties expressed or implied and constitutes the entire warranty.

FOR ASSISTANCE

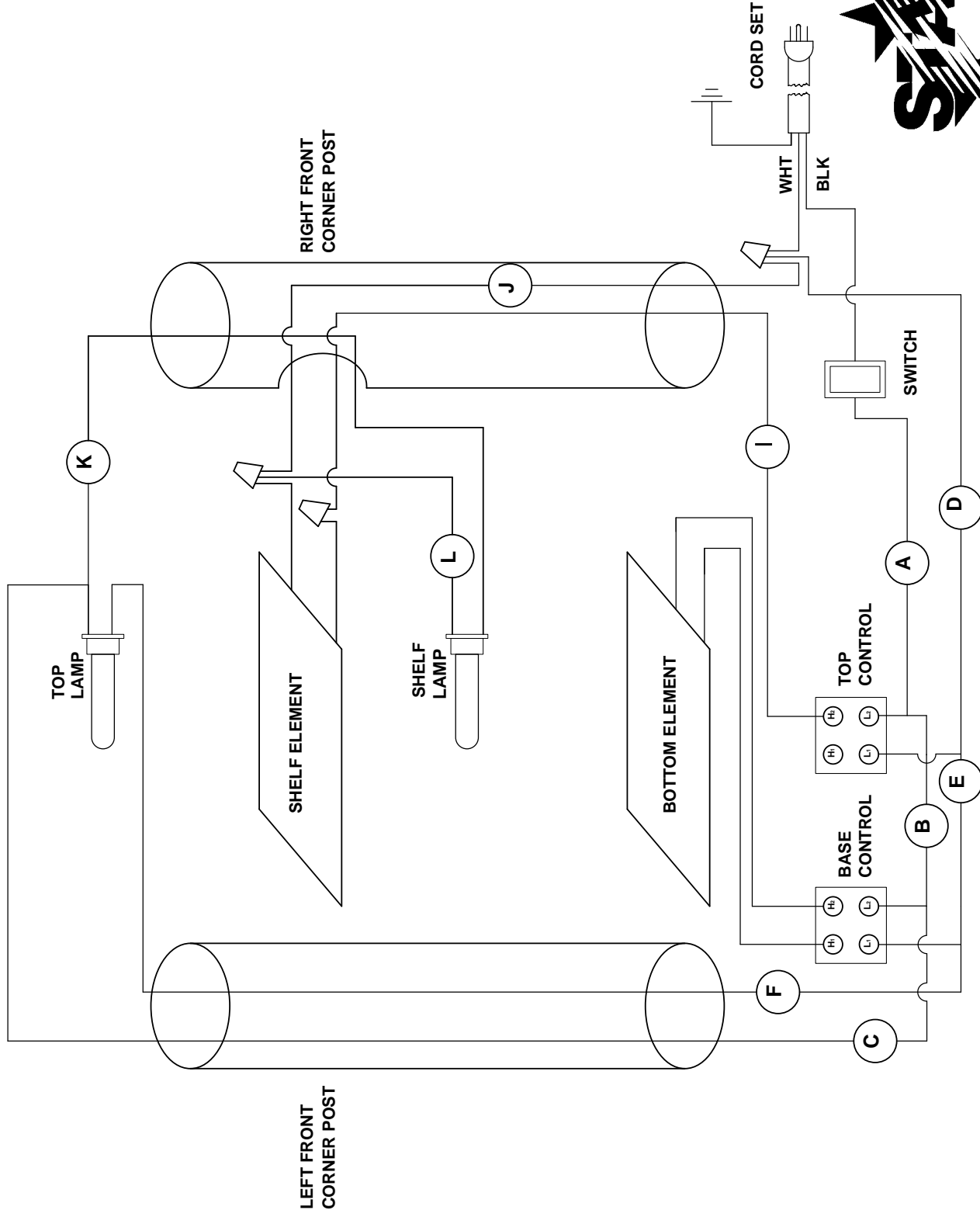
Should you need any assistance regarding the Operation or Maintenance of any Star equipment; write, phone, fax or email our Service Department. In all correspondence mention the Model number and the Serial number of your unit, and the voltage or type of gas you are using.



THIS DRAWING CONTAINS INFORMATION CONFIDENTIAL TO STAR MFG. INT'L, INC.
NO REPRODUCTION OR DISCLOSURE OF ITS CONTENTS IS PERMITTED.

SK1887

01/25/02



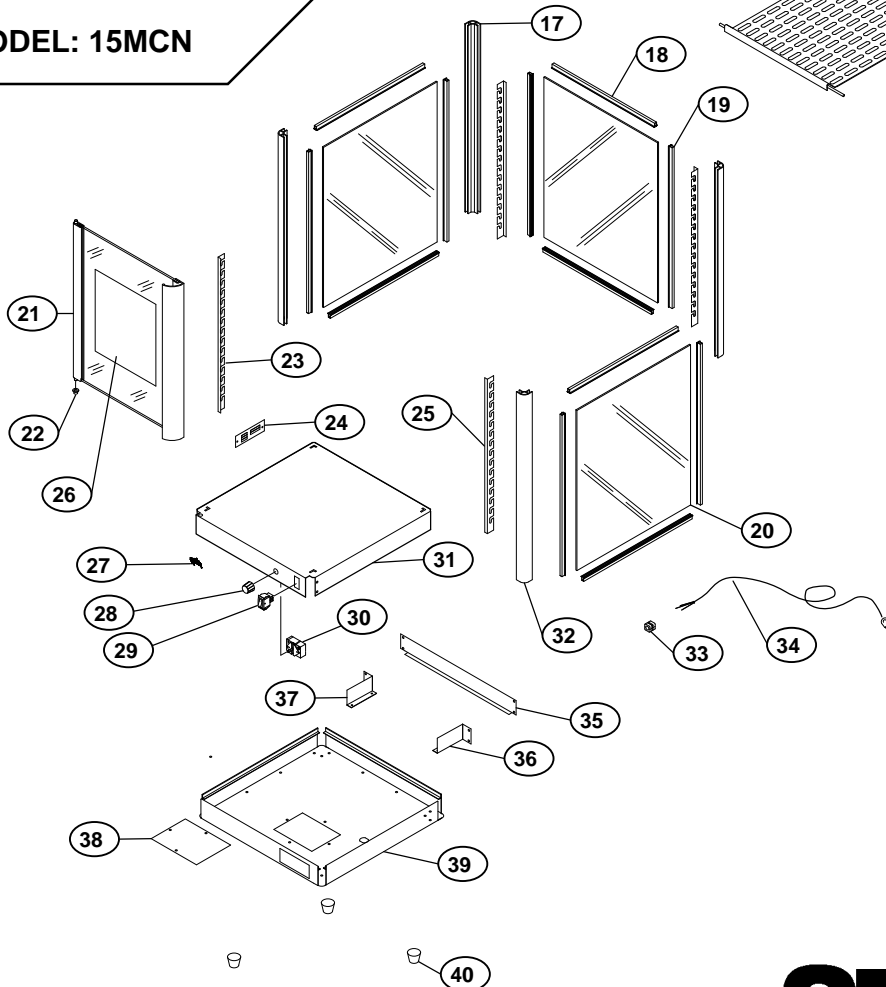
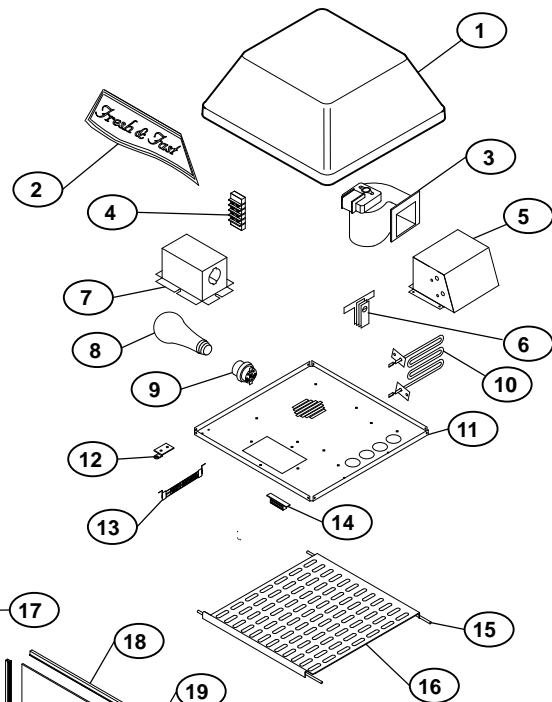
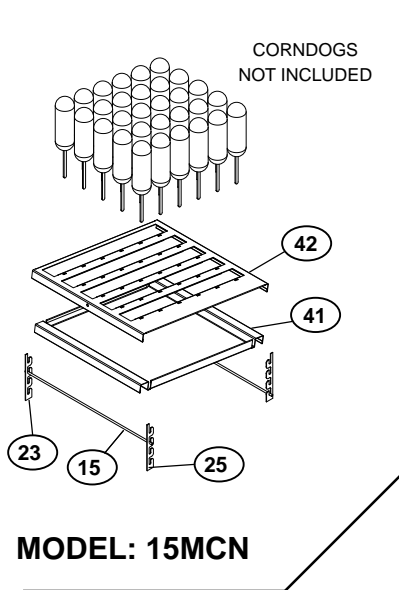
18MCP WIRE DIAGRAM

THIS DRAWING CONTAINS INFORMATION CONFIDENTIAL TO STAR MFG. INT'L. INC.
NO REPRODUCTION OR DISCLOSURE OF ITS CONTENTS IS PERMITTED.

STAR MANUFACTURING INTERNATIONAL INC.

SK1886

01/25/02



SOME ITEMS ARE INCLUDED FOR
ILLUSTRATIVE PURPOSES ONLY AND IN
CERTAIN INSTANCES MAY NOT BE AVAILABLE



MODEL: 12MC/MCPT, 15MC/MCPT/MCN

STAR MANUFACTURING INTERNATIONAL, INC.

SK1893

REV. B

9/30/05

PARTS LIST

February 23, 2007 Rev I

MODEL 12MC, 12MCPT, 15MC, 15MCN, 15MCPT, 15MCMR

Key Number	Part Number	Number Per Unit	Description and Model Designation
1	2L-Z5064	1	Top Cover 12MC, 12MCPT
	2L-Z4287	1	Top Cover 15MC, 15MCPT
2	2M-Z5113	1	Top Front Graphic 12MC, 12MCPT
	2M-Z4577	1	Top Front Graphic 15MC, 15MCPT
3	2U-Z5349	1	Blower Assembly - 120V
	2U-Z5511	1	Blower Assembly - 230V
4	2E-Z4597	1	Terminal Block
5	D5-Z5073	1	Heating Duct 12MC, 12MCPT
	D5-Z5072	1	Heating Duct 15MC, 15MCPT
6	2T-Z0622	1	Thermostat High Limit 12MC, 12MCPT, 15MC, 15MCPT
7	D5-Z5074	1	Lamp Housing
8	2S-Y9118	1	Lamp 100W - 120V
	2S-Z0630	1	Lamp 100W - 230V
9	2E-Y9184	1	Socket
10	2N-Z5294	1	Element 350W - 120V 12MC, 12MCPT
	2N-Z5512	1	Element 350W - 230V 12MC, 12MCPT
	2N-Z0337	1	Element 500W - 120V 15MC, 15MCPT
	2N-Z0793	1	Element 500W - 230V 15MC, 15MCPT
11	D5-Z5069	1	Top Liner 12MC, 12MCPT
	D5-Z4288	1	Top Liner 15MC, 15MCPT
12	D5-Z4528	1/2	Hinge Bracket 12 / 15
13	2T-Z0613	1	Thermometer
14	2R-Z4937	1	Magnetic Catch 12MC
	2R-Z4937	2	Magnetic Catch 12MCPT
	2R-Z4937	1	Magnetic Catch 15MC
	2R-Z4937	2	Magnetic Catch 15MCPT
15	D5-Z5317	4	Shelf Rod 12MC, 12MCPT
	D5-Z5316	6	Shelf Rod 15MC, 15MCPT
	D5-Z5316	2	Shelf Rod 15MCN
16	D5-Z5101	2	Shelf 12MC, 12MCPT
	D5-Z4286	3	Shelf 15MC, 15MCPT
17	2I-Z5065	3	Corner Post 12MC, 12MCPT
	2I-Z4532	3	Corner Post 15MC, 15MCPT
18	2I-Z5116	6/4	Glass Channel Horizontal 12MC / 12MCPT
	2I-Z4581	6/4	Glass Channel Horizontal 15MC / 15MCPT
19	2I-Z5115	8	Glass Channel Vertical 12MC, 12MCPT
	2I-Z4580	8	Glass Channel Vertical 15MC, 15MCPT
20	2Q-Z5066	3/2	Side Glass 12MC / 12MCPT
	2Q-Z4579	3/2	Side Glass 15MC / 15MCPT
21	D5-MC0013	1/2	Assembly, Door 12MC / 12MCPT
	D5-MC0003	1/2	Assembly, Door 15MC / 15MCPT
22	2C-Z5427	1	Nylon Spacer
23	D5-Z5117	2	Shelf Bracket Left 12MC, 12MCPT
	D5-Z4650	2	Shelf Bracket Left 15MC, 15MCPT
24	-----	1	Nameplate
25	D5-Z5246	2	Shelf Bracket Right 12MC, 12MCPT
	D5-Z5245	2	Shelf Bracket Right 15MC, 15MCPT
26	2M-Z6646	1	Door Graphic 15MCMR
27	2M-Z2718	1	Star Emblem 12MC
	2M-Z2718	2	Star Emblem 12MCPT
	2M-Z2718	1	Star Emblem 15MC
	2M-Z2718	2	Star Emblem 15MCPT
28	2R-Z5128	1	Knob Infinite Control

**IMPORTANT: WHEN ORDERING, SPECIFY VOLTAGE OR TYPE GAS DESIRED
INCLUDE MODEL AND SERIAL NUMBER**

**PAGE 1
OF 2**

Some items are included for illustrative purposes only and in certain instances may not be available.



Star Manufacturing International, Inc.

PARTS LIST

February 23, 2007 Rev I

MODEL 12MC, 12MCPT, 15MC, 15MCN, 15MCPT, 15MCMR

Key Number	Part Number	Number Per Unit	Description and Model Number
29	2E-Y6144	1	Switch
30	2J-Z2195	1	Infinite Control - 120V
	2J-Z2192	1	Infinite Control - 230V
31	D5-Z5070	1	Bottom Liner 12MC
	D5-Z5260	1	Bottom Liner 12MCPT
	D5-Z4651	1	Bottom Liner 15MC
	D5-Z5261	1	Bottom Liner 15MCPT
32	2I-Z5118	1	Corner Post-Wire 12MC, 12MCPT
	2I-Z5110	1	Corner Post-Wire 15MC, 15MCPT
33	2K-Y3240	1	Strain Relief Bushing
34	D5-MC0014	1	Cordset Assembly - 120V
	D5-MC0016	1	Cordset Assembly - 230V
35	D5-Z5355	1	Stiffener 12MCPT
	D5-Z5356	1	Stiffener 15MCPT
36	D5-Z5364	1	Stiffener Right
37	D5-Z5363	1	Stiffener Left
38	D5-Z5076	1	Access Panel
39	D5-Z5071	1	Bottom Cover 12MC
	D5-Z5257	1	Bottom Cover 12MCPT
	D5-Z4289	1	Bottom Cover 15MC
	D5-Z5258	1	Bottom Cover 15MCPT
40	2I-Z0057	4	Foot
41	D5-Z9141	1	Crumb Tray 15MCN
42	D5-Z9142	1	Corn Dog Shelf 15MCN

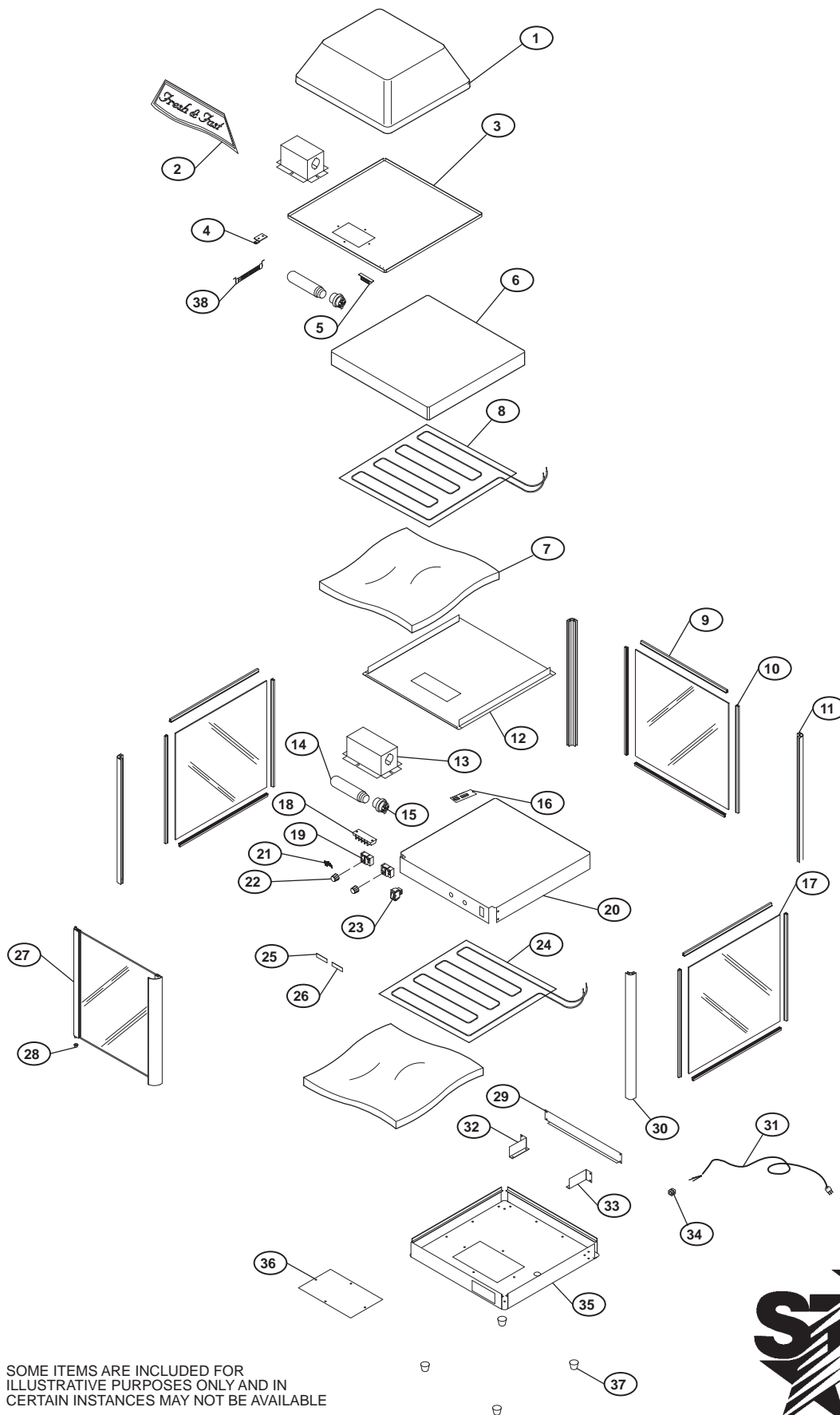
**IMPORTANT: WHEN ORDERING, SPECIFY VOLTAGE OR TYPE GAS DESIRED
INCLUDE MODEL AND SERIAL NUMBER**

**PAGE 2
OF 2**

Some items are included for illustrative purposes only and in certain instances may not be available.



Star Manufacturing International, Inc.



SOME ITEMS ARE INCLUDED FOR
ILLUSTRATIVE PURPOSES ONLY AND IN
CERTAIN INSTANCES MAY NOT BE AVAILABLE



MODEL: 18MCP/MCPT

STAR MANUFACTURING INTERNATIONAL, INC.

SK1894

REV. --

PARTS LIST

March 7, 2006 Rev H

MODEL 18MCP, 18MCPT

Key Number	Part Number	Number Per Unit	Description and Model Designation
1	2L-Z4526	1	Top Cover
2	2M-Z4541	1	Top Front Graphic
3	D5-Z4527	1	Top Liner 18MCP
4	D5-Z4528	1/2	Hinge Bracket 18MCP / 18MCPT
5	2R-Z4937	1/2	Magnetic Catch 18MCP / 18MCPT
6	D5-Z4529	1	Shelf Top
7	D5-Z5373	2	Insulation
8	D5-Z8818	1	Foil Element-Stripped 65W - 120V
	D5-Z8841	1	Foil Element-Stripped 65W - 230V
9	2I-Z4552	6/4	Glass Channel Horizontal 18MCP / 18MCPT
10	2I-Z4580	8	Glass Channel Vertical
11	2I-Z5217	2	Corner Post
12	D5-Z4530	1	Shelf Bottom
13	D5-Z5263	2	Lamp Housing
14	2S-Z4554	2	Light Bulb 60W 120V Tubular
	2S-Z5572	2	Light Bulb 60W 230V Tubular
15	2E-Y9184	2	Socket
16	----	1	Nameplate
17	2Q-Z4534	3/2	Side Glass 18MCP / 18MCPT
18	2E-Z4597	1	Terminal Block
19	2J-Z2195	2	Infinite Control - 120V
	2J-Z2192	2	Infinite Control - 230V
20	D5-Z4681	1	Bottom Liner 18MCP
	D5-Z5262	1	Bottom Liner 18MCPT
21	2M-Z2718	1/2	Star Emblem 18MCP / 18MCPT
22	2R-Z5128	2	Knob Infinite Control
23	2E-Y6144	1	Switch
24	2N-Z8817	1	Foil Element 65W - 120V
	2N-Z8840	1	Foil Element 65W - 230V
25	2M-Z5365	1	Decal-Lower
26	2M-Z5366	1	Decal-Upper
27	D5-MC0008	1/2	Assembly, Door 18MCP / 18MCPT
28	2C-Z5427	1/2	Nylon Spacer 18MCP / 18MCPT
29	D5-Z5357	1	Stiffener
30	2I-Z5218	2	Corner Post-Wire
31	D5-MC0014	1	Cordset Assembly - 120V
	D5-MC0016	1	Cordset Assembly - 230V
32	D5-Z5363	1	Stiffener Left
33	D5-Z5364	1	Stiffener Right
34	2K-Y3240	1	Strain Relief Bushing
35	D5-Z4682	1	Bottom Cover 18MCP
	D5-Z5259	1	Bottom Cover 18MCPT
36	D5-Z5235	1	Access Panel
37	2I-Z0057	4	Foot
38	2T-Z0613	1	Thermometer

IMPORTANT: WHEN ORDERING, SPECIFY VOLTAGE OR TYPE GAS DESIRED
INCLUDE MODEL AND SERIAL NUMBER

PAGE 1
OF 1

Some items are included for illustrative purposes only and in certain instances may not be available.



Star Manufacturing International, Inc.