



HEAVY DUTY DRAWER STYLE FOOD WARMERS

MODELS

SDW1

SDW2

SDW3

SDW1N

SDW2N

SDW3N

SDW1W

SDW2C

SDW3C

SDW2W

SDW2NC

SDW3NC

Installation and Operation Instructions

2M-Z4061 Rev.C 6/09/2010



SDW3NC



SAFETY SYMBOL



These symbols are intended to alert the user to the presence of important operating and maintenance instructions in the manual accompanying the appliance.

RETAIN THIS MANUAL FOR FUTURE REFERENCE NOTICE

Using any part other than genuine Star factory supplied parts relieves the manufacturer of all liability.

Star reserves the right to change specifications and product design without notice. Such revisions do not entitle the buyer to corresponding changes, improvements, additions or replacements for previously purchased equipment.

Due to periodic changes in designs, methods, procedures, policies and regulations, the specifications contained in this sheet are subject to change without notice. While Star Manufacturing exercises good faith efforts to provide information that is accurate, we are not responsible for errors or omissions in information provided or conclusions reached as a result of using the specifications. By using the information provided, the user assumes all risks in connection with such use.

MAINTENANCE AND REPAIRS

Contact your local authorized service agent for service or required maintenance. Please record the model number, serial number, voltage and purchase date in the area below and have it ready when you call to ensure a faster service.

Model No. _____
Serial No. _____
Voltage _____
Purchase Date _____

Authorized Service Agent

Reference the listing provided with the unit

or

for an updated listing go to:

Website: www.star-mfg.com
E-mail Service@star-mfg.com
Telephone: (800) 807-9054 Local (314) 781-2777

Service Help Desk

Business Hours: 8:00 am to 4:30 p.m. Central Standard Time

Telephone: (800) 807-9054 Local (314) 781-2777

Fax: (800) 396-2677 Local (314) 781-2714

E-mail Parts@star-mfg.com
Service@star-mfg.com
Warranty@star-mfg.com

Website: www.star-mfg.com

Mailing Address: Star International Holdings Inc., Company
10 Sunnen Drive
St. Louis, MO 63143
U.S.A

SPECIFICATIONS

SDW1, SDW1N, SDW1W

Capacity:	1 Full Size Standard Food Pan (12 x 20 x 6)	
Electrical:	120 Volt, 60 Cycle, Single Phase, 475 Watts NEMA 5-15P Attachment Plug 220/240 Volt, 50/60 Cycle, Single Phase, 403/475 Watts CEE 7/7 Attachment Plug	
Dimensions:	SDW1, 1W	29 1/4" - Length x 21 13/16" - Depth x 11 1/4" - Height (74.3 cm - Length x 55.4 cm - Depth x 28.58 cm - Height)
	SDW1N	21 1/4" - Length x 29 13/16" - Depth x 11 1/4" - Height (53.98 cm - Length x 75.72 cm - Depth x 28.58 cm - Height)

SDW2, SDW2C, SDW2N, SDW2NC, SDW2W

Capacity:	2 Full Size Standard Food Pans (12 x 20 x 6)	
Electrical:	120 Volt, 60 Cycle, Single Phase, 925 Watts NEMA 5-15P Attachment Plug 220/240 Volt, 50/60 Cycle, Single Phase, 781/925 Watts CEE 7/7 Attachment Plug	
Dimensions:	SDW2, 2C, 2W	29 1/4" - Length x 21 13/16" - Depth x 24 7/16" - Height (74.3 cm - Length x 55.4 cm - Depth x 62.07 cm - Height)
	SDW2N, 2NC	21 1/4" - Length x 29 13/16" - Depth x 24 7/16" - Height (53.98 cm - Length x 75.72 cm - Depth x 62.07 cm - Height)

SDW3,SDW3C, SDW3N, SDW3NC

Capacity:	3 Full Size Standard Food Pans (12 x 20 x 6)	
Electrical:	120 Volt, 60 Cycle, Single Phase, 1,375 Watts NEMA 5-15P Attachment Plug 220/240 Volt, 50/60 Cycle, Single Phase, 1,159/1,375 Watts CEE 7/7 Attachment Plug	
Dimensions:	SDW3, 3C	29 1/4" - Length x 21 13/16" - Depth x 34 5/8" - Height (74.3 cm - Length x 55.4 cm - Depth x 78.94 cm - Height)
	SDW3N, 3NC	21 1/4" - Length x 29 13/16" - Depth x 34 5/8" - Height (53.98 cm - Length x 75.72 cm - Depth x 78.94 cm - Height)

Note: "N" versions have the pan positioned with the 20" dimension front to back.



CAUTION

This equipment is designed and sold for commercial use only by personnel trained and experienced in its operation and is not sold for consumer use in and around the home nor for use directly by the general public in food service locations.

INSTALLATION AND OPERATING INSTRUCTIONS



WARNING

These models are equipped for the voltage and wattage indicated on the nameplate. They are designed to operate on alternating current, two wire single-phase service only. A three wire grounding cord with a three-prong attachment plug is provided. **DO NOT CONNECT TO DIRECT CURRENT (DC).**

INSTALLATION

1. Single drawer units are supplied with 1" feet pre-assembled to the unit. Two and three drawer units are supplied with 4" feet. These feet must be assembled to the bottom of the unit once the shipping pallet has been removed. Do not install without the feet provided. Contact the factory or one of its representatives for optional 4" feet for single drawer units.
2. Place the unit on a flat level surface.
3. Thoroughly clean the unit before placing it in service. Remove the drawer by extending it fully then lifting slightly on the front of the drawer to clear the drawer stop. Replace the drawer by reversing this procedure. See Figure 1 below.

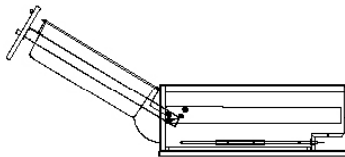


Figure 1

4. Connect the power cord to the appropriate receptacle.
5. Units of the same series (either narrow or wide construction) can be stacked directly on each other when the feet are removed. Do not stack more than four drawers high. To prevent a tipping hazard do not open more than one heavily loaded drawer at a time. Do not place more than 30 lbs. of food in each drawer.



CAUTION

DO NOT IMMERSE THE UNIT IN WATER. DO NOT USE PRESSURIZED WATER TO CLEAN THE UNIT. DO NOT ALLOW ANY LIQUID TO ENTER THE CONTROL COMPARTMENT THROUGH THE LOUVERED AIR OPENINGS.

CLEANING

1. Disconnect the unit from the electrical power source before cleaning.
2. Allow the unit to cool thoroughly before cleaning. Avoid contact with the heated parts of the unit.
3. Clean the unit daily. Use a soft cloth and mild detergent to keep the stainless steel panels free of scratches. If an abrasive cleaner is used rub in the direction of the grain to prevent unsightly scratches to the finish.

OPERATION

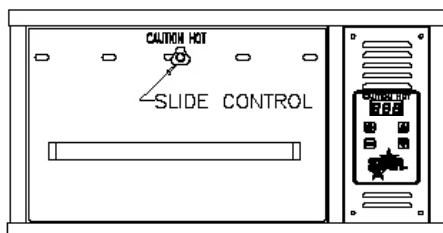
1. The temperature control will regulate temperatures inside the drawer cavity and is adjustable from 100° to 200°F. Pressing the ON/OFF button of the temperature control activates the unit. This control will provide close regulation of the temperature in the drawer and give an indication of the food temperature. The setpoint is displayed by pressing and holding the TEMP button. Adjust the regulated temperature by pressing the + or – buttons while holding the TEMP button down. The actual drawer temperature is displayed when no buttons are pressed and the control is in the ON mode. The dot in the lower corner of the display indicates when the control is calling for heat.

CAUTION



FOOD TEMPERATURE WILL VARY FROM THE CONTROL SET TEMPERATURE BASED ON THE MOISTURE CONTENT AND CONSISTENCY OF THE FOOD PRODUCT

2. Each drawer is equipped with a moisture control. Turn the black knob above the drawer handle ¼ turn to the left to free the control adjustment. Slide the knob to align the holes in the drawer front and vent any excess moisture to produce a crisp product. Position the knob so that the holes are closed to produce a moist product.



Lock the control in position by turning the knob ¼ turn to the right. Different combinations of food products and heat settings will require different moisture settings. Breads and rolls are difficult to hold for prolonged periods of time because of the low moisture content of the product. These products are best held between 120° and 140°F. To retain the moisture of these products place them in a plastic bag when in the warmer. Time and experience is required to determine the optimum combination of temperature and moisture setting to provide a palatable product that will hold for an extended period of time.

3. Preheat the unit for ½ hour before placing food in the warmer. This unit is intended to hold hot food at the proper serving temperature. Foods should be heated to the proper temperature prior to being placed in the warmer. Most meat and poultry foods are best held between 160° and 175°F.
4. Optimum holding temperatures for specific foods are based on the products moisture content, product density, volume and proper serving temperature. Safe sanitary temperatures must be considered when determining the length of time a product can be held and remain palatable. Allow foods that are heated to extreme temperatures during preparation to cool before being placed in the warmer to prevent the accumulation of excess condensation.



CAUTION

TO PREVENT A TIPPING HAZARD AND POTENTIAL BODILY INJURY DO NOT OPEN MORE THAN ONE HEAVILY LOADED DRAWER AT A TIME. IT IS NOT RECOMMENDED TO PLACE MORE THAN 30 LBS OF FOOD IN EACH DRAWER.

THOROUGHLY INSPECT YOUR UNIT ON ARRIVAL

This unit has been tested for proper operation before leaving our plant to insure delivery of your unit in perfect condition. However, there are instances in which the unit may be damaged in transit. In the event you discover any type of damage to your product upon receipt, you must immediately contact the transportation company who delivered the item to you and initiate your claim with same. If this procedure is not followed, it may affect the warranty status of the unit.

LIMITED EQUIPMENT WARRANTY

All workmanship and material in Star products have a one (1) year limited warranty on parts & labor in the United States and Canada. Such warranty is limited to the original purchaser only and shall be effective from the date the equipment is placed in service. Star's obligation under this warranty is limited to the repair of defects without charge, by the factory authorized service agency or one of its sub-agencies. Models that are considered portable (*see below*) should be taken to the closest Star service agency, transportation prepaid.

- > Star will not assume any responsibility for loss of revenue.
- > On all shipments outside the United States and Canada, see International Warranty.
- * The warranty period for the JetStar six (6) ounce & Super JetStar eight (8) ounce series popcorn machines is two (2) years.
- * The warranty period for the Chrome-Max Griddles is five (5) years on the griddle surface. See detailed warranty provided with unit.
- * The warranty period for Teflon/Dura-Tec coatings is one year under normal use and reasonable care. This warranty does not apply if damage occurs to Teflon/Dura-Tec coatings from improper cleaning, maintenance, use of metallic utensils, or abrasive cleaners. This warranty does not apply to the "non-stick" properties of such materials.
- > This warranty does not apply to "Special Products" but to regular catalog items only. Star's warranty on "Special Products" is six (6) months on parts and ninety (90) days on labor.
- > This warranty does not apply to any item that is disassembled or tampered with for any purpose other than repair by a Star Authorized Service Center or the Service Center's sub-agency.
- > This warranty does not apply if damage occurs from improper installation, misuse, wrong voltage, wrong gas or operated contrary to the Installation and Operating instructions.
- > This warranty is not valid on Conveyor Ovens *unless* a "start-up/check-out" has been performed by a Factory Authorized Technician.

PARTS WARRANTY

Parts that are sold to repair out of warranty equipment are warranted for ninety (90) days. The part only is warranted. Labor to replace the part is chargeable to the customer.

SERVICES NOT COVERED BY WARRANTY

- | | |
|--|---|
| 1. Travel time and mileage rendered beyond the 50 mile radius limit | 10. Voltage conversions |
| 2. Mileage and travel time on portable equipment (<i>see below</i>) | 11. Gas conversions |
| 3. Labor to replace such items that can be replaced easily during a daily cleaning routine, ie; removable kettles on fryers, knobs, grease drawers on griddles, etc. | 12. Pilot light adjustment |
| 4. Installation of equipment | 13. Miscellaneous adjustments |
| 5. Damages due to improper installation | 14. Thermostat calibration and by-pass adjustment |
| 6. Damages from abuse or misuse | 15. Resetting of circuit breakers or safety controls or reset buttons |
| 7. Operated contrary to the Operating and Installation Instructions | 16. Replacement of bulbs |
| 8. Cleaning of equipment | 17. Replacement of fuses |
| 9. Seasoning of griddle plates | 18. Repair of damage created during transit, delivery, & installation OR created by acts of God |

PORTABLE EQUIPMENT

Star will not honor service bills that include travel time and mileage charges for servicing any products considered "Portable" including items listed below. These products should be taken to the Service Agency for repair:

- | | |
|---|----------------------------|
| * The Model 510FD Fryer. | ALL: |
| * The Model J4R, 4 oz. Popcorn Machine. | * Pop-Up Toasters |
| * The Model 518CMA & 526CMA Cheese Melter. | * Butter Dispensers |
| * The Model 12MC & 15MC & 18MCP Hot Food Merchandisers. | * Pretzel Merchandisers |
| * The Model 12NCPW & 15NCPW Nacho Chip/Popcorn Warmer. | * Pastry Display Cabinets |
| * All Hot Dog Equipment except Roller Grills & Drawer Bun Warmers. | * Nacho Chip Merchandisers |
| * All Nacho Cheese Warmers except Model 11WLA Series Nacho Cheese Warmer. | * Accessories of any kind |
| * All Condiment Dispensers except the Model HPDE, & SPDE Series Dispenser. | * Sneeze Guards |
| * All Specialty Food Warmers except Model 130R, 11RW Series, and 11WSA Series. | * Pizza Ovens |
| * All QCS/RCS Series Toasters except Model QCS3 & RCS3 Series. | * Heat Lamps |
| | * Pumps |

The foregoing warranty is in lieu of any and all other warranties expressed or implied and constitutes the entire warranty.

FOR ASSISTANCE

Should you need any assistance regarding the Operation or Maintenance of any Star equipment; write, phone, fax or email our Service Department. In all correspondence mention the Model number and the Serial number of your unit, and the voltage or type of gas you are using.



STAR MANUFACTURING INTERNATIONAL INC.
#10 SUNNEN DRIVE
ST. LOUIS, MO. 63143, USA

DR.	TH	CK.	DATE
			01-23-01

TOLERANCES UNLESS OTHERWISE NOTED
FRACTIONS $\pm 1/64$ DECIMALS $\pm .005$ ANGLES $\pm 1^\circ$

MATERIAL

FINISH

THIS DRAWING CONTAINS INFORMATION CONFIDENTIAL TO STAR MFG. INT'L. INC.
NO REPRODUCTION OR DISCLOSURE OF ITS CONTENTS IS PERMITTED.

MODEL NO.
SDW1/2/3

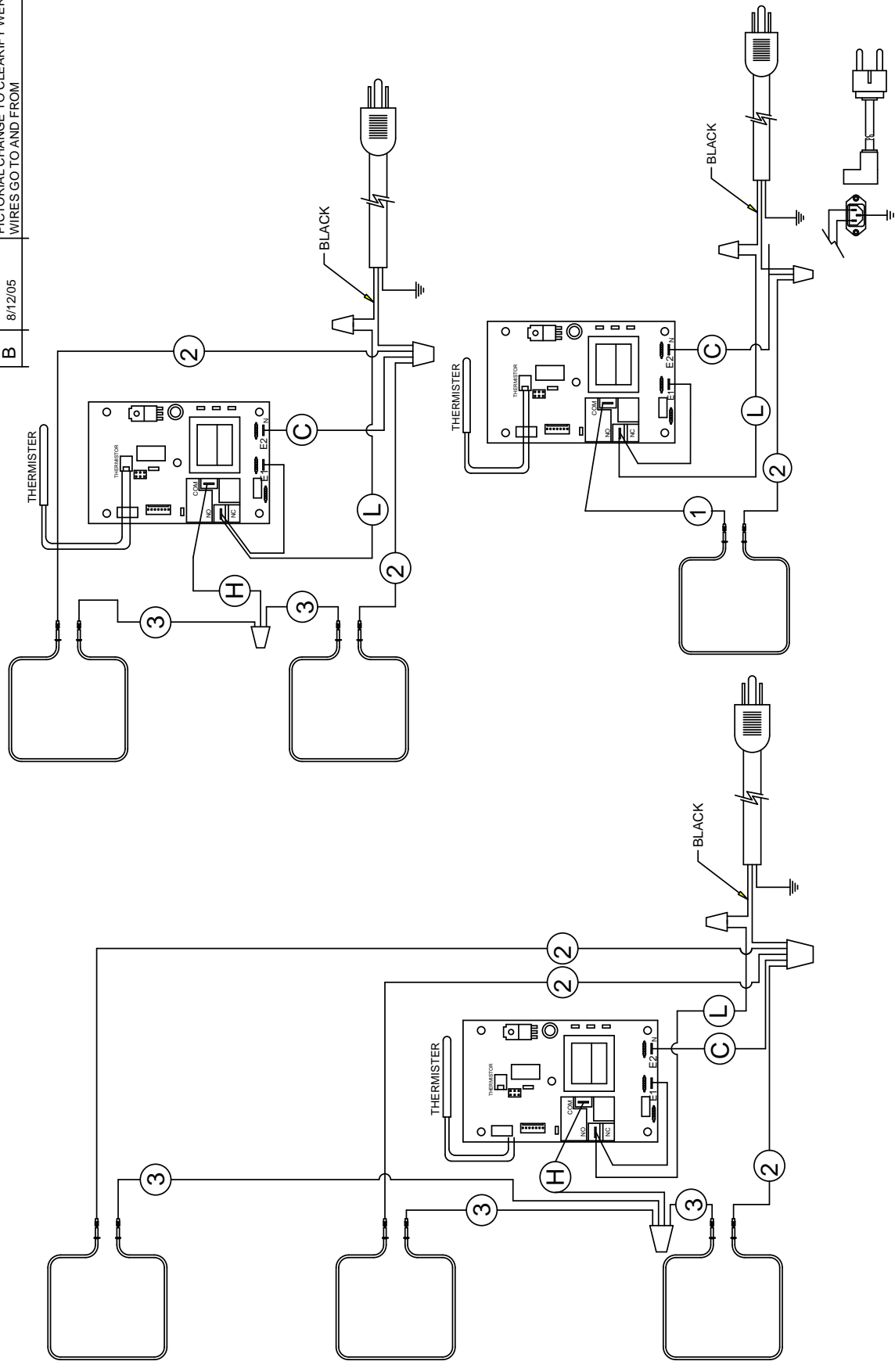
TITLE


WIRE DIAGRAM

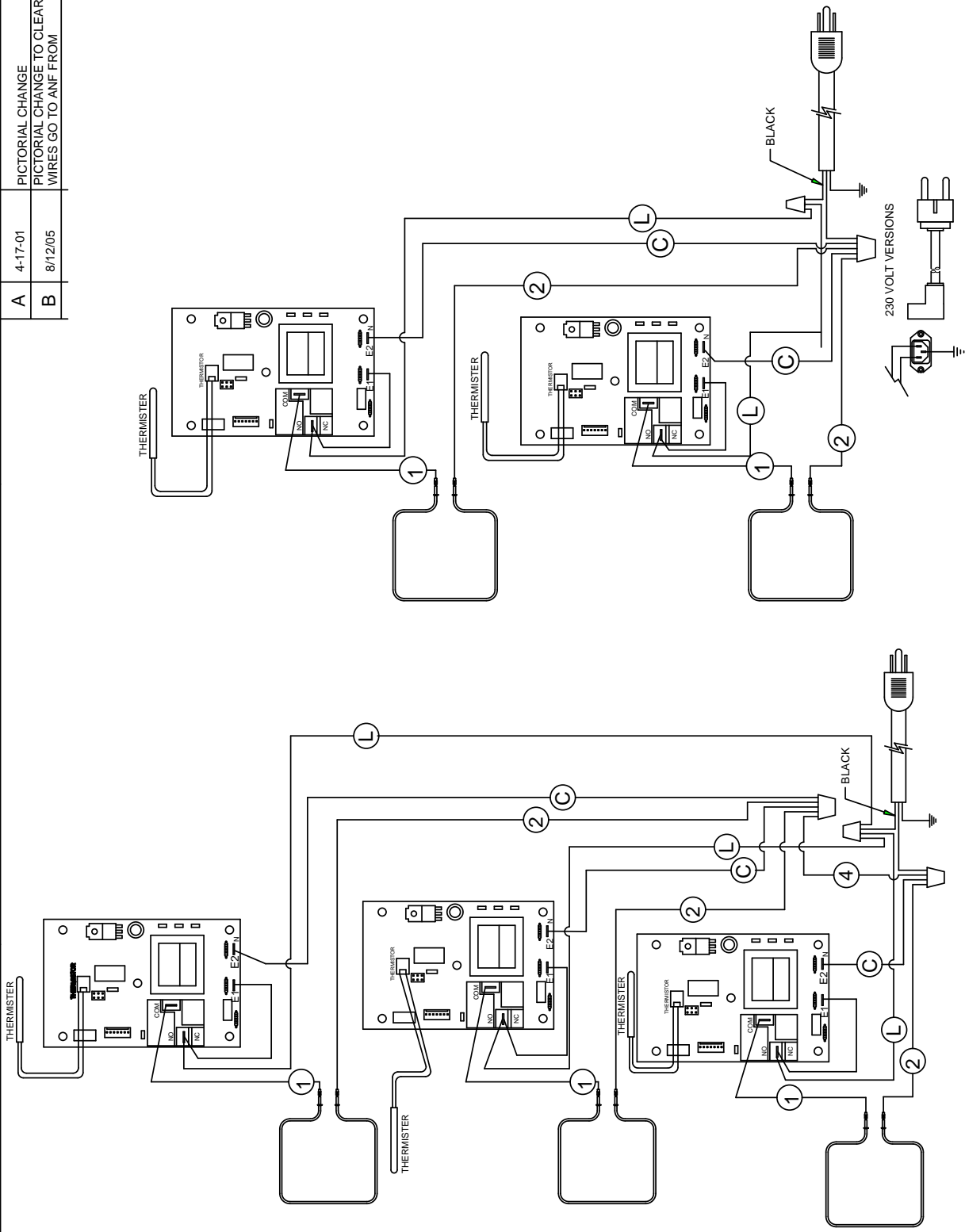
PART NO.
SK1850

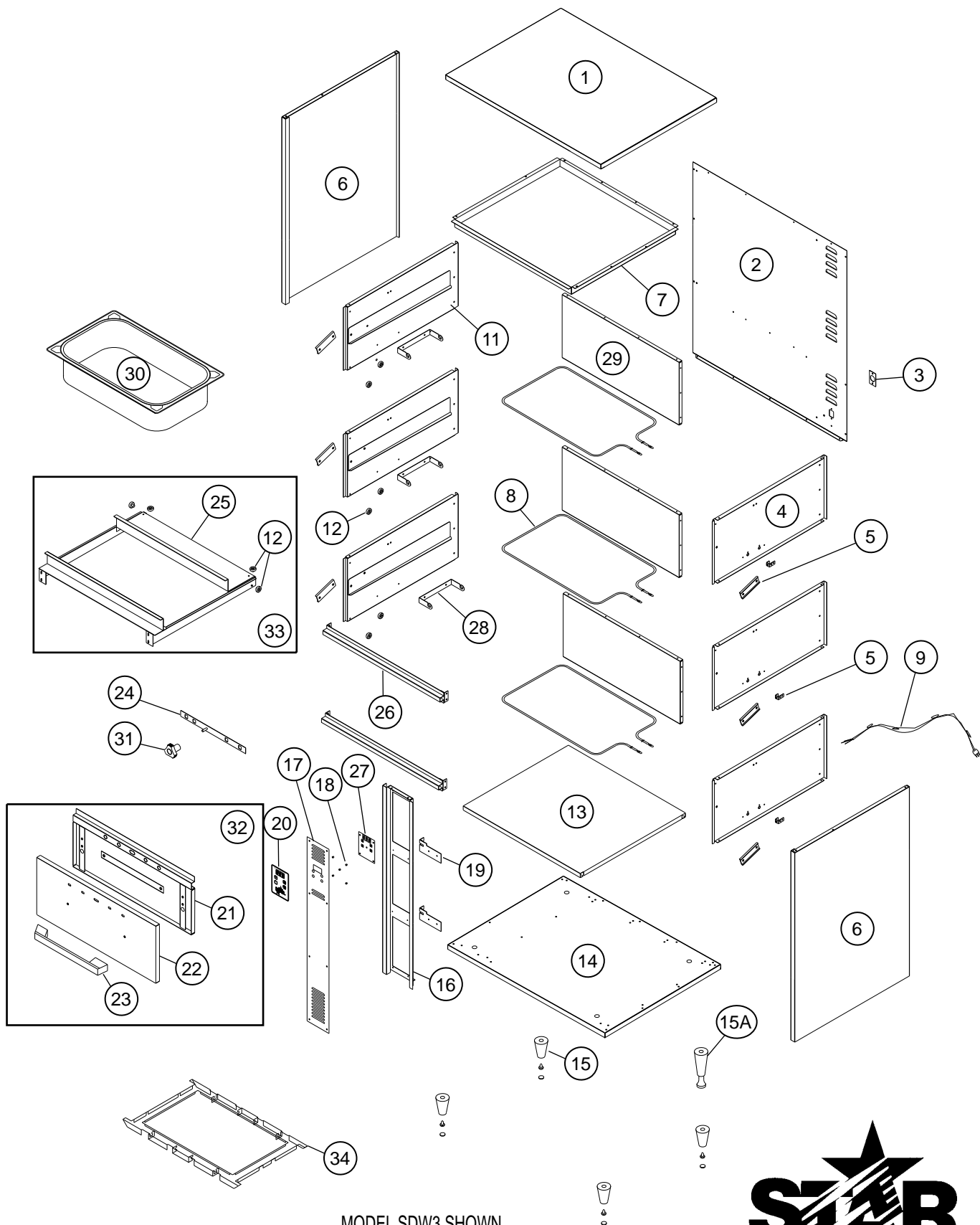
REVISIONS	LTR	DATE	DESCRIPTION OF CHANGE
A		4-17-01	PICTORIAL CHANGE
B		8/12/05	PICTORIAL CHANGE TO CLARIFY WERE WIRES GO TO AND FROM

DR	TH	CG
----	----	----



<div><div><div></div><div>STAR MANUFACTURING INTERNATIONAL INC. #10 SUNNEN DRIVE ST. LOUIS, MO. 63143, USA</div></div></div>				MATERIAL ----- FINISH -----		MODEL NO. SDW2C/3C		PART NO. SK1851				
DR.		TH	CK.	DATE	TITLE WIRE DIAGRAM							
TOLERANCES UNLESS OTHERWISE NOTED FRACTIONS ± 1/64 DECIMALS ± .005 ANGLES ± 1°				THIS DRAWING CONTAINS INFORMATION CONFIDENTIAL TO STAR MFG. INT'L. INC. NO REPRODUCTION OR DISCLOSURE OF ITS CONTENTS IS PERMITTED.		REVISIONS		LTR	DATE	DESCRIPTION OF CHANGE		DR
<div><div>○</div><div>○</div><div>○</div><div>○</div><div>○</div><div>○</div><div>○</div><div>○</div><div>○</div><div>○</div><div>○</div><div>○</div><div>○</div><div>○</div><div>○</div><div>○</div><div>○</div><div>○</div><div>○</div><div>○</div><div>○</div><div>○</div><div>○</div><div>○</div><div>○</div><div>○</div><div>○</div><div>○</div><div>○</div><div>○</div><div>○</div><div>○</div><div>○</div><div>○</div><div>○</div><div>○</div><div>○</div><div>○</div><div>○</div><div>○</div><div>○</div><div>○</div><div>○</div><div>○</div><div>○</div><div>○</div><div>○</div><div>○</div><div>○</div><div>○</div><div>○</div><div>○</div><div>○</div><div>○</div><div>○</div><div>○</div><div>○</div><div>○</div><div>○</div><div>○</div><div>○</div><div>○</div><div>○</div><div>○</div><div>○</div><div>○</div><div>○</div><div>○</div><div>○</div><div>○</div><div>○</div><div>○</div><div>○</div><div>○</div><div>○</div><div>○</div><div>○</div><div>○</div><div>○</div><div>○</div><div>○</div><div>○</div><div>○</div><div>○</div><div>○</div><div>○</div><div>○</div><div>○</div><div>○</div><div>○</div><div>○</div><div>○</div><div>○</div><div>○</div><div>○</div><div>○</div><div>○</div><div>○</div><div>○</div><div>○</div><div>○</div><div>○</div><div>○</div><div>○</div><div>○</div><div>○</div><div>○</div><div>○</div><div>○</div><div>○</div><div>○</div><div>○</div><div>○</div><div>○</div><div>○</div><div>○</div><div>○</div><div>○</div><div>○</div><div>○</div><div>○</div><div>○</div><div>○</div><div>○</div><div>○</div><div>○</div><div>○</div><div>○</div><div>○</div><div>○</div><div>○</div><div>○</div><div>○</div><div>○</div><div>○</div><div>○</div><div>○</div><div>○</div><div>○</div><div>○</div><div>○</div><div>○</div><div>○</div><div>○</div><div>○</div><div>○</div><div>○</div><div>○</div><div>○</div><div>○</div><div>○</div><div>○</div><div>○</div><div>○</div><div>○</div><div>○</div><div>○</div><div>○</div><div>○</div><div>○</div><div>○</div><div>○</div><div>○</div><div>○</div><div>○</div><div>○</div><div>○</div><div>○</div><div>○</div><div>○</div><div>○</div><div>○</div><div>○</div><div>○</div><div>○</div><div>○</div><div>○</div><div>○</div><div>○</div><div>○</div><div>○</div><div>○</div><div>○</div><div>○</div><div>○</div><div>○</div><div>○</div><div>○</div><div>○</div><div>○</div><div>○</div><div>○</div><div>○</div><div>○</div><div>○</div><div>○</div><div>○</div><div>○</div><div>○</div><div>○</div><div>○</div><div>○</div><div>○</div><div>○</div><div>○</div><div>○</div><div>○</div><div>○</div><div>○</div><div>○</div><div>○</div><div>○</div><div>○</div><div>○</div><div>○</div><div>○</div><div>○</div><div>○</div><div>○</div><div>○</div><div>○</div><div>○</div><div>○</div><div>○</div><div>○</div><div>○</div><div>○</div><div>○</div><div>○</div><div>○</div><div>○</div><div>○</div><div>○</div><div>○</div><div>○</div><div>○</div><div>○</div><div>○</div><div>○</div><div>○</div><div>○</div><div>○</div><div>○</div><div>○</div><div>○</div><div>○</div><div>○</div><div>○</div><div>○</div><div>○</div><div>○</div><div>○</div><div>○</div><div>○</div><div>○</div><div>○</div><div>○</div><div>○</div><div>○</div><div>○</div><div>○</div><div>○</div><div>○</div><div>○</div><div>○</div><div>○</div><div>○</div><div>○</div><div>○</div><div>○</div><div>○</div><div>○</div><div>○</div><div>○</div><div>○</div><div>○</div><div>○</div><div>○</div><div>○</div><div>○</div><div>○</div><div>○</div><div>○</div><div>○</div><div>○</div><div>○</div><div>○</div><div>○</div><div>○</div><div>○</div><div>○</div><div>○</div><div>○</div><div>○</div><div>○</div><div>○</div><div>○</div><div>○</div><div>○</div><div>○</div><div>○</div><div>○</div><div>○</div><div>○</div><div>○</div><div>○</div><div>○</div><div>○</div><div>○</div><div>○</div><div>○</div><div>○</div><div>○</div><div>○</div><div>○</div><div>○</div><div>○</div><div>○</div><div>○</div><div>○</div><div>○</div><div>○</div><div>○</div><div>○</div><div>○</div><div>○</div><div>○</div><div>○</div><div>○</div><div>○</div><div>○</div><div>○</div><div>○</div><div>○</div><div>○</div><div>○</div><div>○</div><div>○</div><div>○</div><div>○</div><div>○</div><div>○</div><div>○</div><div>○</div><div>○</div><div>○</div><div>○</div><div>○</div><div>○</div><div>○</div><div>○</div><div>○</div><div>○</div><div>○</div><div>○</div><div>○</div><div>○</div><div>○</div><div>○</div><div>○</div><div>○</div><div>○</div><div>○</div><div>○</div><div>○</div><div>○</div><div>○</div><div>○</div><div>○</div><div>○</div><div>○</div><div>○</div><div>○</div><div>○</div><div>○</div><div>○</div><div>○</div><div>○</div><div>○</div><div>○</div><div>○</div><div>○</div><div>○</div><div>○</div><div>○</div><div>○</div><div>○</div><div>○</div><div>○</div><div>○</div><div>○</div><div>○</div><div>○</div><div>○</div><div>○</div><div>○</div><div>○</div><div>○</div><div>○</div><div>○</div><div>○</div><div>○</div><div>○</div><div>○</div><div>○</div><div>○</div><div>○</div><div>○</div><div>○</div><div>○</div><div>○</div><div>○</div><div>○</div><div>○</div><div>○</div><div>○</div><div>○</div><div>○</div><div>○</div><div>○</div><div>○</div><div>○</div><div>○</div><div>○</div><div>○</div><div>○</div><div>○</div><div>○</div><div>○</div><div>○</div><div>○</div><div>○</div><div>○</div><div>○</div><div>○</div><div>○</div><div>○</div><div>○</div><div>○</div><div>○</div><div>○</div><div>○</div><div>○</div><div>○</div><div>○</div><div>○</div><div>○</div><div>○</div><div>○</div><div>○</div><div>○</div><div>○</div><div>○</div><div>○</div><div>○</div><div>○</div><div>○</div><div>○</div><div>○</div><div>○</div><div>○</div><div>○</div><div>○</div><div>○</div><div>○</div><div>○</div><div>○</div><div>○</div><div>○</div><div>○</div><div>○</div><div>○</div><div>○</div><div>○</div><div>○</div><div>○</div><div>○</div><div>○</div><div>○</div><div>○</div><div>○</div><div>○</div><div>○</div><div>○</div><div>○</div><div>○</div><div>○</div><div>○</div><div>○</div><div>○</div><div>○</div><div>○</div><div>○</div><div>○</div><div>○</div><div>○</div><div>○</div><div>○</div><div>○</div><div>○</div><div>○</div><div>○</div><div>○</div><div>○</div><div>○</div><div>○</div><div>○</div><div>○</div><div>○</div><div>○</div><div>○</div><div>○</div><div>○</div><div>○</div><div>○</div><div>○</div><div>○</div><div>○</div><div>○</div><div>○</div><div>○</div><div>○</div><div>○</div><div>○</div><div>○</div><div>○</div><div>○</div><div>○</div><div>○</div><div>○</div><div>○</div><div>○</div><div>○</div><div>○</div><div>○</div><div>○</div><div>○</div><div>○</div><div>○</div><div>○</div><div>○</div><div>○</div><div>○</div><div>○</div><div>○</div><div>○</div><div>○</div><div>○</div><div>○</div><div>○</div><div>○</div><div>○</div><div>○</div><div>○</div><div>○</div><div>○</div><div>○</div><div>○</div><div>○</div><div>○</div><div>○</div><div>○</div><div>○</div><div>○</div><div>○</div><div>○</div><div>○</div><div>○</div><div>○</div><div>○</div><div>○</div><div>○</div><div>○</div><div>○</div><div>○</div><div>○</div><div>○</div><div>○</div><div>○</div><div>○</div><div>○</div><div>○</div><div>○</div><div>○</div><div>○</div><div>○</div><div>○</div><div>○</div><div>○</div><div>○</div><div>○</div><div>○</div><div>○</div><div>○</div><div>○</div><div>○</div><div>○</div><div>○</div><div>○</div><div>○</div><div>○</div><div>○</div><div>○</div><div>○</div><div>○</div><div>○</div><div>○</div><div>○</div><div>○</div><div>○</div><div>○</div><div>○</div><div>○</div><div>○</div><div>○</div><div>○</div><div>○</div><div>○</div><div>○</div><div>○</div><div>○</div><div>○</div><div>○</div><div>○</div><div>○</div><div>○</div><div>○</div><div>○</div><div>○</div><div>○</div><div>○</div><div>○</div><div>○</div><div>○</div><div>○</div><div>○</div><div>○</div><div>○</div><div>○</div><div>○</div><div>○</div><div>○</div><div>○</div><div>○</div><div>○</div><div>○</div><div>○</div><div>○</div><div>○</div><div>○</div><div>○</div><div>○</div><div>○</div><div>○</div><div>○</div><div>○</div><div>○</div><div>○</div><div>○</div><div>○</div><div>○</div><div>○</div><div>○</div><div>○</div><div>○</div><div>○</div><div>○</div><div>○</div><div>○</div><div>○</div><div>○</div><div>○</div><div>○</div><div>○</div><div>○</div><div>○</div><div>○</div><div>○</div><div>○</div><div>○</div><div>○</div><div>○</div><div>○</div><div>○</div><div>○</div><div>○</div><div>○</div><div>○</div><div>○</div><div>○</div><div>○</div><div>○</div><div>○</div><div>○</div><div>○</div><div>○</div><div>○</div><div>○</div><div>○</div><div>○</div><div>○</div><div>○</div><div>○</div><div>○</div><div>○</div><div>○</div><div>○</div><div>○</div><div>○</div><div>○</div><div>○</div><div>○</div><div>○</div><div>○</div><div>○</div><div>○</div><div>○</div><div>○</div><div>○</div><div>○</div><div>○</div><div>○</div><div>○</div><div>○</div><div>○</div><div>○</div><div>○</div><div>○</div><div>○</div><div>○</div><div>○</div><div>○</div><div>○</div><div>○</div><div>○</div><div>○</div><div>○</div><div>○</div><div>○</div><div>○</div><div>○</div><div>○</div><div>○</div><div>○</div><div>○</div><div>○</div><div>○</div><div>○</div><div>○</div><div>○</div><div>○</div><div>○</div><div>○</div><div>○</div><div>○</div><div>○</div><div>○</div><div>○</div><div>○</div><div>○</div><div>○</div><div>○</div><div>○</div><div>○</div><div>○</div><div>○</div><div>○</div><div>○</div><div>○</div><div>○</div><div>○</div><div>○</div><div>○</div><div>○</div><div>○</div><div>○</div><div>○</div><div>○</div><div>○</div><div>○</div><div>○</div><div>○</div><div>○</div><div>○</div><div>○</div><div>○</div><div>○</div><div>○</div><div>○</div><div>○</div><div>○</div><div>○</div><div>○</div><div>○</div><div>○</div><div>○</div><div>○</div><div>○</div><div>○</div><div>○</div><div>○</div><div>○</div><div>○</div><div>○</div><div>○</div><div>○</div><div>○</div><div>○</div><div>○</div><div>○</div><div>○</div><div>○</div><div>○</div><div>○</div><div>○</div><div>○</div><div>○</div><div>○</div><div>○</div><div>○</div><div>○</div><div>○</div><div>○</div><div>○</div><div>○</div><div>○</div><div>○</div><div>○</div><div>○</div><div>○</div><div>○</div><div>○</div><div>○</div><div>○</div><div>○</div><div>○</div><div>○</div><div>○</div><div>○</div><div>○</div><div>○</div><div>○</div><div>○</div><div>○</div><div>○</div><div>○</div><div>○</div><div>○</div><div>○</div><div>○</div><div>○</div><div>○</div><div>○</div><div>○</div><div>○</div><div>○</div><div>○</div><div>○</div><div>○</div><div>○</div><div>○</div><div>○</div><div>○</div><div>○</div><div>○</div><div>○</div><div>○</div><div>○</div><div>○</div><div>○</div><div>○</div><div>○</div><div>○</div><div>○</div><div>○</div><div>○</div><div>○</div><div>○</div><div>○</div><div>○</div><div>○</div><div>○</div><div>○</div><div>○</div><div>○</div><div>○</div><div>○</div><div>○</div><div>○</div><div>○</div><div>○</div><div>○</div><div>○</div><div>○</div><div>○</div><div>○</div><div>○</div><div>○</div><div>○</div><div>○</div><div>○</div><div>○</div><div>○</div><div>○</div><div>○</div><div>○</div><div>○</div><div>○</div><div>○</div><div>○</div><div>○</div><div>○</div><div>○</div><div>○</div><div>○</div><div>○</div><div>○</div><div>○</div><div>○</div><div>○</div><div>○</div><div>○</div><div>○</div><div>○</div><div>○</div><div>○</div><div>○</div><div>○</div><div>○</div><div>○</div><div>○</div><div>○</div><div>○</div><div>○</div><div>○</div><div>○</div><div>○</div><div>○</div><div>○</div><div>○</div><div>○</div><div>○</div><div>○</div><div>○</div><div>○</div><div>○</div></div>												





MODEL SDW3 SHOWN
DRAWER WARMER

SOME ITEMS ARE INCLUDED FOR
ILLUSTRATIVE PURPOSES ONLY AND IN
CERTAIN INSTANCES MAY NOT BE AVAILABLE

MODEL - SDW1, SDW2, SDW3



STAR MANUFACTURING INTERNATIONAL, INC.

SK1840

REV. B

12/12/2000

PARTS LIST

May 7, 2010, Rev. C

MODEL SDW1, SDW2, SDW3, SDW1W, SDW2W Drawer Warmers

Key Number	Part Number	Number Per Unit	Description and Model Designation
1	E9-Z4031	1	TOP PANEL
2	E9-Z4030	1	BACK PANEL SDW1
	E9-Z4089	1	BACK PANEL SDW2
	E9-Z4097	1	BACK PANEL SDW2
3	E9-Z4027	1	ADAPTER PLATE 120V
	2E-Y9227	1	INLET 230V
	2K-Y2967	1	CORD BUSHING 120V
4	E9-DW0004	1/2/3	LINER ASSEMBLY RIGHT SDW1 / SDW2 / SDW3
	E9-DW0040	1/2	LINER ASSEMBLY RIGHT SDW1W / SDW2W
5	E9-Z3987	2/4/6	BEARING STIFFENER SDW1 / SDW2 / SDW3
6	E9-Z4032	2	SIDE PANEL SDW1
	E9-Z4090	2	SIDE PANEL SDW2
	E9-Z4098	2	SIDE PANEL SDW2
7	E9-Z4022	1	TOP LINER
8	2N-Z4057	1/2/3	HEATING ELEMENT 120V SDW1 / SDW2 / SDW3
	2N-Z4154	1/2/3	HEATING ELEMENT 230V SDW1 / SDW2 / SDW3
9	A5-250027	1	LEAD IN CORD 120V
	2E-Z0512	1	LEAD IN CORD 230V
10	E9-Z3986	1/2/3	SENSOR BRACKET SDW1 / SDW2 / SDW3
11	E9-DW0003	1/2/3	LINER ASSEMBLY LT SDW1 / SDW2 / SDW3
	E9-DW0039	1/2	LINER ASSEMBLY LT SDW1W / SDW2W
12	2P-Z0315	8/16/24	GUIDE BEARING w/ SCREW SDW1 / SDW2 / SDW3
NI	2C-1810	8/16/24	WASHER SDW1 / SDW2 / SDW3
NI	2C-Z0498	8/16/24	NUT SDW1 / SDW2 / SDW3
13	E9-Z4009	1	BOTTOM LINER
14	E9-DW0002	1	BOTTOM ASSEMBLY
15	2R-Z5846	4	FOOT
15A	2R-Y5092	4	4" FOOT SDW2, SDW3
16	E9-Z4001	1	FRONT PANEL SDW1
	E9-Z4088	1	FRONT PANEL SDW2
	E9-Z4096	1	FRONT PANEL SDW3
17	E9-DW0012	1	CONTROL PANEL ASSY SDW1
	E9-DW0020	1	CONTROL PANEL ASSY SDW2
	E9-DW0022	1	CONTROL PANEL ASSY SDW3
18	2K-Z1971	5	CONTROL BOARD SPACER
19	E9-Z4078	1/2	GUSSET SDW2 / SDW3
20	2M-Z4067	1	GRAPHICS PANEL SDW1
21	E9-DW0011	1/2/3	DRAWER LINER ASSEMBLY SDW1 / SDW2 / SDW3
22	E9-Z4050	1/2/3	DRAWER FRONT SDW1 / SDW2 / SDW3
23	2R-Y7557	1/2/3	DRAWER PULL SDW1 / SDW2 / SDW3
24	E9-DW0009	1/2/3	DAMPER ASSEMBLY SDW1 / SDW2 / SDW3
25	E9-DW0010	1/2/3	DRAWER ASSEMBLY SDW1 / SDW2 / SDW3
	E9-DW0043	1/2	DRAWER ASSEMBLY SDW1W / SDW2W
26	E9-DW0021	1/2	FRONT TRIM ASSEMBLY SDW2 / SDW3
27	2E-Z4062	1	CONTROL W/ SENSOR 120V
	2E-Z4153	1	CONTROL W/ SENSOR 230V
28	E9-Z4016	1/2/3	ELEMENT BRACKET SDW1 / SDW2 / SDW3
29	E9-Z4026	1/2/3	REAR LINER SDW1 / SDW2 / SDW3
30	2D-Y6177	1/2/3	FULL SIZE PAN 6" SDW1 / SDW2 / SDW3
31	2R-Z4054	1/2/3	KNOB SDW1 / SDW2 / SDW3

**IMPORTANT: WHEN ORDERING, SPECIFY VOLTAGE OR TYPE GAS DESIRED
INCLUDE MODEL AND SERIAL NUMBER**

PAGE 1
OF 2

Some items are included for illustrative purposes only and in certain instances may not be available.



Star International Holdings Inc. Company

PARTS LIST

May 7, 2010, Rev. C

MODEL SDW1, SDW2, SDW3, SDW1W, SDW2W Drawer Warmers

Key Number	Part Number	Number Per Unit	Description and Model Designation
32	E9-DW0030	1/2/3	DRAWER FRONT COMPLETE SDW1 / SDW2 / SDW3
33	E9-DW0031	1/2/3	DRAWER FRAME W/ROLLERS SDW1 / SDW2 / SDW3
	E9-DW0042	1/2	DRAWER FRAME W/ROLLERS SDW1W / SDW2W
32/33	E9-DW0029	1/2/3	DRAWER ASSY COMPLETE SDW1 / SDW2 / SDW3
	E9-DW0041	1/2	DRAWER ASSY COMPLETE SDW1W / SDW2W
34	E9-Z7719	1/2	ELEMENT COVER SDW1W / SDW2W
N/A	E9-Z4013	1	INSULATION SIDE SDW1
N/A	E9-Z4092	1	INSULATION SIDE SDW2
N/A	E9-Z4100	1	INSULATION SIDE SDW3
N/A	E9-Z4014	1	INSULATION REAR SDW1
N/A	E9-Z4093	1	INSULATION REAR SDW2
N/A	E9-Z4101	1	INSULATION REAR SDW3
N/A	E9-Z4012	2	INSULATION TOP/BOTTOM
N/A	E9-Z4015	1/2/3	INSULATION DRAWER FRONT SDW1 / SDW2 / SDW3

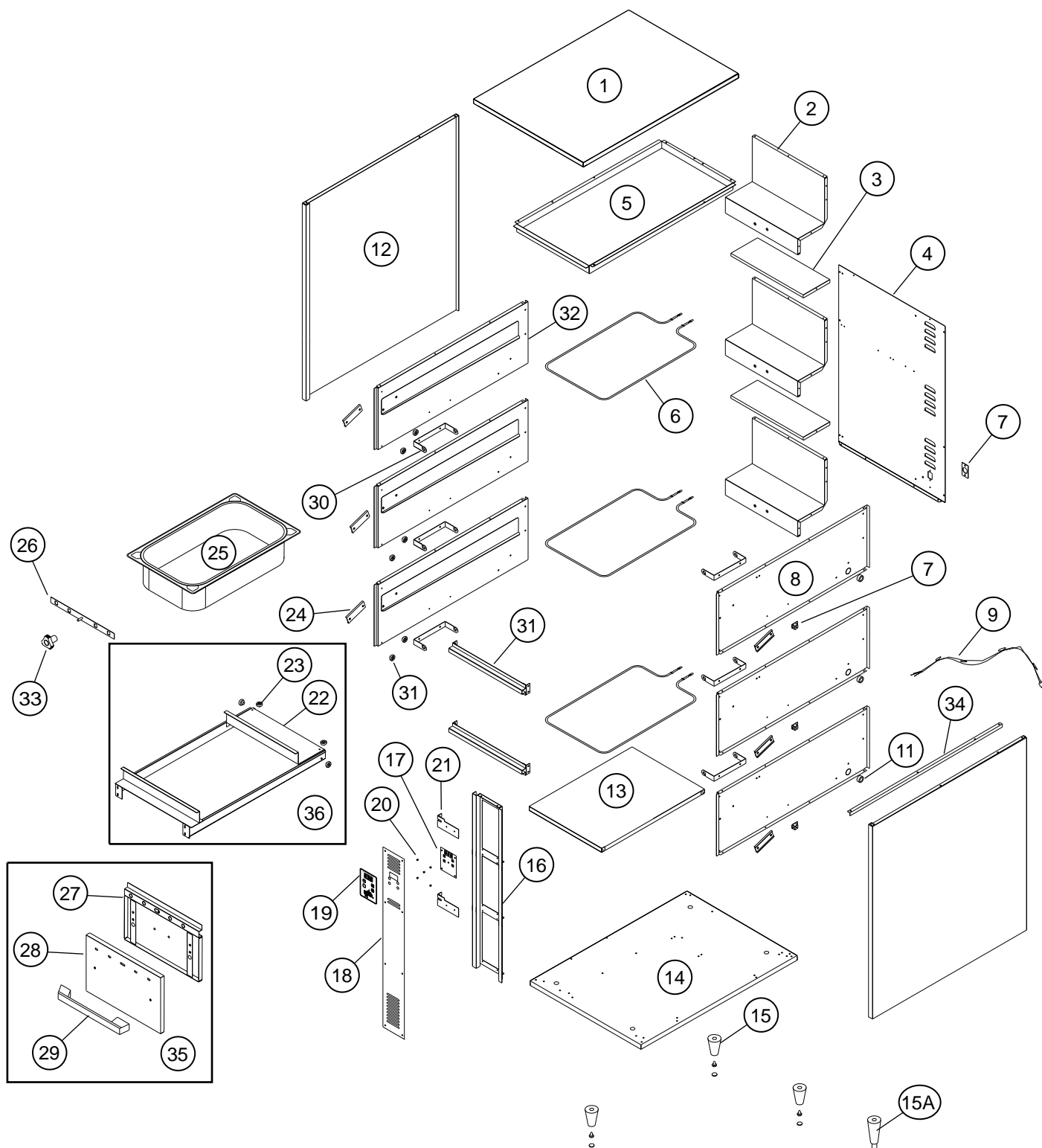
**IMPORTANT: WHEN ORDERING, SPECIFY VOLTAGE OR TYPE GAS DESIRED
INCLUDE MODEL AND SERIAL NUMBER**

PAGE 2
OF 2

Some items are included for illustrative purposes only and in certain instances may not be available.



Star International Holdings Inc. Company



DRAWER WARMER
MODEL SDW3N SHOWN



SOME ITEMS ARE INCLUDED FOR
ILLUSTRATIVE PURPOSES ONLY AND IN
CERTAIN INSTANCES MAY NOT BE AVAILABLE

MODEL - SDW1N, SDW2N, SDW3N

STAR MANUFACTURING INTERNATIONAL, INC.

SK1838

REV. A

4/17/2001

PARTS LIST

June 9, 2010, Rev. C

MODEL SDW1N, SDW2N, SDW3N Drawer Warmers

Key Number	Part Number	Number Per Unit	Description and Model Designation
1	E9-Z3999	1	TOP PANEL
2	E9-Z3996	1/2/3	REAR LINER SDW1N / SDW2N / SDW3N
3	E9-Z4077	1	REAR LINER COVER SDW2N, SDW3N
4	E9-Z3998	1	BACK PANEL SDW1N
	E9-Z4072	1	BACK PANEL SDW2N
	E9-Z4104	1	BACK PANEL SDW3N
5	E9-Z3997	1	TOP LINER
6	2N-Z4057	1/2/3	HEATING ELEMENT 120V SDW1N / SDW2N / SDW3N
	2N-Z4154	1/2/3	HEATING ELEMENT 230V SDW1N / SDW2N / SDW3N
7	E9-Z4027	1	ADAPTER PLATE 120V
	2E-Y9227	1	INLET 230V
	2K-Y2967	1	CORD BUSHING 120V
8	E9-DW0006	1/2/3	LINER ASSEMBLY RIGHT SDW1N / SDW2N / SDW3N
9	A5-250027	1	LEAD IN CORD 120V
	2E-Z0512	1	LEAD IN CORD 230V
10	E9-Z3986	1/2/3	SENSOR BRACKET SDW1N / SDW2N / SDW3N
11	2K-8043	1/2/3	BUSHING SDW1N / SDW2N / SDW3N
12	E9-Z4000	2	SIDE PANEL SDW1N
	E9-Z4073	2	SIDE PANEL SDW2N
	E9-Z4105	2	SIDE PANEL SDW3N
13	E9-Z3976	1	BOTTOM LINER
14	E9-DW0001	1	BOTTOM ASSEMBLY
15	2R-Z5846	4	FOOT
15A	2R-Y5092	4	4" FOOT SDW2N, SDW3N
16	E9-Z4001	1	FRONT PANEL SDW1N
	E9-Z4088	1	FRONT PANEL SDW2N
	E9-Z4096	1	FRONT PANEL SDW3N
17	2E-Z4062	1	CONTROL W/ SENSOR 120V
	2E-Z4153	1	CONTROL W/ SENSOR 230V
18	E9-DW0012	1	CONTROL PANEL ASSY SDW1N
	E9-DW0020	1	CONTROL PANEL ASSY SDW2N
	E9-DW0022	1	CONTROL PANEL ASSY 120V SDW3N
19	2M-Z4067	1	GRAPHICS PANEL SDW1N
20	2K-Z1971	5	CONTROL BOARD SPACER
21	E9-Z4078	1/2	GUSSET SDW2N / SDW3N
22	E9-DW0007	1/2/3	DRAWER ASSEMBLY SDW1N / SDW2N / SDW3N
23	2P-Z0315	8/16/24	GUIDE BEARING SDW1N / SDW2N / SDW3N
NI	2C-1810	8/16/24	WASHER SDW1N / SDW2N / SDW3N
NI	2C-Z0498	8/16/24	NUT SDW1N / SDW2N / SDW3N
24	E9-Z3987	2/4/6	BEARING STIFFENER SDW1N / SDW2N / SDW3N
25	2D-Y6177	1/2/3	FULL SIZE PAN 6" SDW1N / SDW2N / SDW3N
26	E9-DW0009	1/2/3	DAMPER ASSEMBLY SDW1N / SDW2N / SDW3N
27	E9-DW0008	1/2/3	DRAWER LINER ASSEMBLY SDW1N / SDW2N / SDW3N
28	E9-Z4049	1/2/3	DRAWER FRONT SDW1N / SDW2N / SDW3N
29	2R-Y7557	1/2/3	DRAWER PULL SDW1N / SDW2N / SDW3N
30	E9-Z3985	2/4/6	ELEMENT BRACKET SDW1N / SDW2N / SDW3N
31	E9-DW0019	1/2	FRONT TRIM ASSEMBLY SDW2N / SDW3N
32	E9-DW0005	1/2/3	LINER ASSEMBLY LT SDW1N / SDW2N / SDW3N
33	2R-Z4054	1/2/3	KNOB SDW1N / SDW2N / SDW3N

**IMPORTANT: WHEN ORDERING, SPECIFY VOLTAGE OR TYPE GAS DESIRED
INCLUDE MODEL AND SERIAL NUMBER**

PAGE 1
OF 2

Some items are included for illustrative purposes only and in certain instances may not be available.



Star International Holdings Inc. Company

PARTS LIST

June 9, 2010, Rev. C

MODEL SDW1N, SDW2N, SDW3N Drawer Warmers

Key Number	Part Number	Number Per Unit	Description and Model Designation
34	E9-Z4260	1	SIDE STIFFENER
35	E9-DW0033	1/2/3	DRAWER FRONT COMPLETE SDW1N / SDW2N / SDW3N
36	E9-DW0034	1/2/3	DRAWER FRAME W/ROLLERS SDW1N / SDW2N / SDW3N
35/36	E9-DW0032	1/2/3	DRAWER ASSY COMPLETE SDW1N / SDW2N / SDW3N
N/A	E9-Z3978	1	INSULATION SIDE SDW1N
N/A	E9-Z4079	1	INSULATION SIDE SDW2N
N/A	E9-Z4107	1	INSULATION SIDE SDW3N
N/A	E9-Z3979	1	INSULATION REAR SDW1N
N/A	E9-Z4080	1	INSULATION REAR SDW2N
N/A	E9-Z4108	1	INSULATION REAR SDW3N
N/A	E9-Z3981	1	INSULATION TOP
N/A	E9-Z3977	1	INSULATION BOTTOM
N/A	E9-Z3980	1/2/3	INSULATION DRAWER FRONT SDW1N / SDW2N / SDW3N

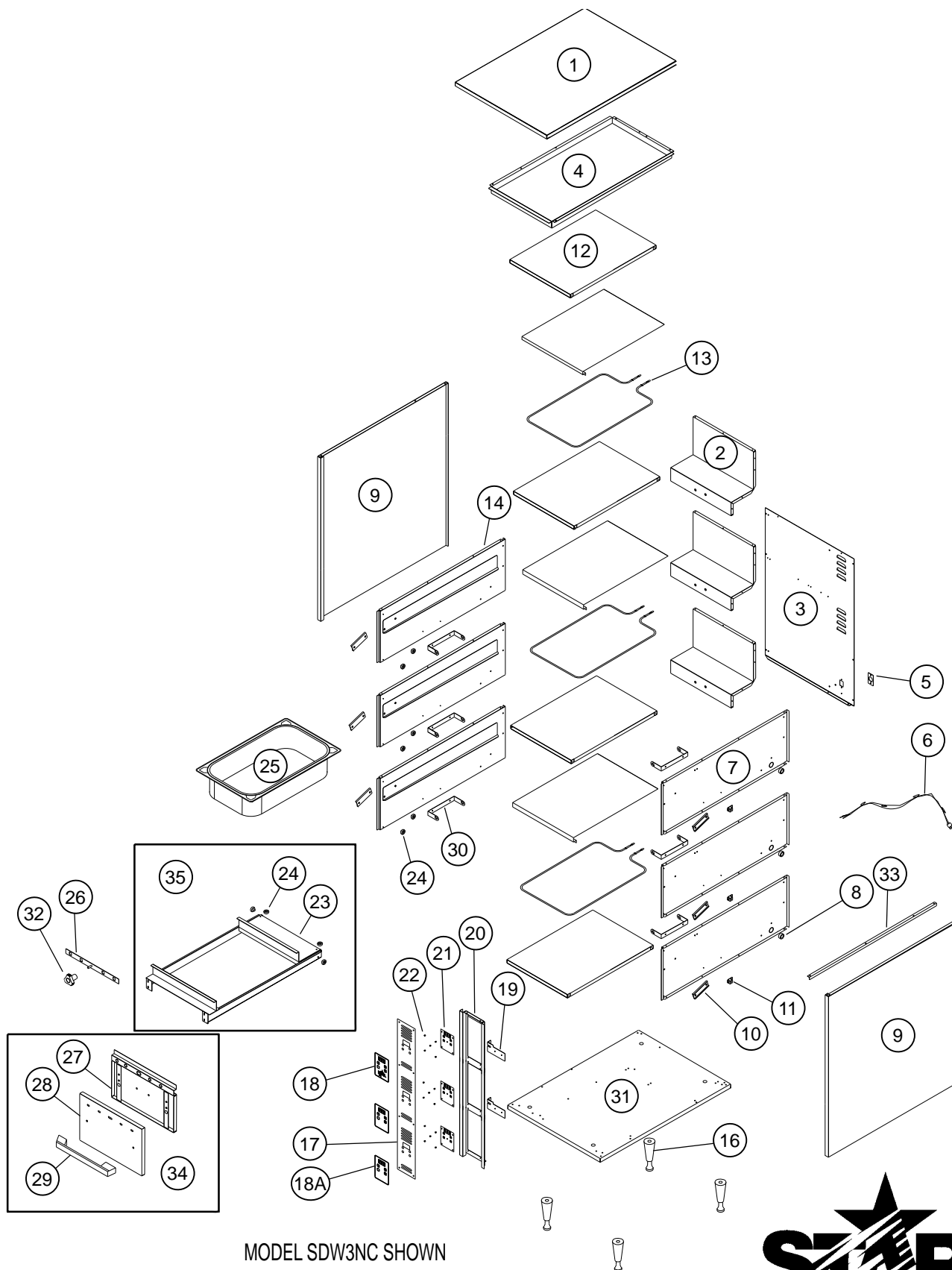
**IMPORTANT: WHEN ORDERING, SPECIFY VOLTAGE OR TYPE GAS DESIRED
INCLUDE MODEL AND SERIAL NUMBER**

PAGE 2
OF 2

Some items are included for illustrative purposes only and in certain instances may not be available.



Star International Holdings Inc. Company



MODEL SDW3NC SHOWN
DRAWER WARMER

SOME ITEMS ARE INCLUDED FOR
ILLUSTRATIVE PURPOSES ONLY AND IN
CERTAIN INSTANCES MAY NOT BE AVAILABLE

MODEL - SDW2NC, SDW3NC



STAR MANUFACTURING INTERNATIONAL, INC.

SK1839

REV. A

4/17/01

PARTS LIST

May 7, 2010, Rev. C

MODEL SDW2NC, SDW3NC Drawer Warmers

Key Number	Part Number	Number Per Unit	Description and Model Designation
1	E9-Z3999	1	TOP PANEL
2	E9-Z3996	2/3	REAR LINER SDW2NC / SDW3NC
3	E9-Z4072	1	BACK PANEL SDW2NC
	E9-Z4104	1	BACK PANEL SDW3NC
4	E9-Z3997	1	TOP LINER
5	E9-Z4027	1	ADAPTER PLATE 120V
	2K-Y2967	1	CORD BUSHING 120V
	2E-Y9227	1	INLET 230V
6	A5-250027	1	LEAD IN CORD 120V
	2E-Z0512	1	LEAD IN CORD 230V
7	E9-DW0006	2/3	LINER ASSEMBLY RIGHT SDW2NC / SDW3NC
8	2K-8043	2/3	BUSHING SDW2NC / SDW3NC
9	E9-Z4073	2	SIDE PANEL SDW2NC
	E9-Z4105	2	SIDE PANEL SDW3NC
10	E9-Z3987	4/6	BEARING STIFFENER SDW2NC / SDW3NC
11	E9-Z3986	2/3	SENSOR BRACKET SDW2NC / SDW3NC
12	E9-Z3976	2/3	BOTTOM LINER SDW2NC / SDW3NC
13	2N-Z4057	2/3	HEATING ELEMENT 120V SDW2NC / SDW3NC
	2N-Z4154	2/3	HEATING ELEMENT 230V SDW2NC / SDW3NC
14	E9-DW0005	2/3	LINER ASSEMBLY LT SDW2NC / SDW3NC
15	E9-Z4114	1/2	DIVIDER PANEL NARROW SDW2NC / SDW3NC
16	2R-Y5092	4	4" FOOT
17	EP-DW0023	1	CONTROL PANEL ASSY SDW2NC
	E9-DW0024	1	CONTROL PANEL ASSY SDW3NC
18	2M-Z4247	1/2	GRAPHICS PANEL SDW2NC / SDW3NC
19	E9-Z4078	1/2	GUSSET SDW2NC / SDW3NC
20	E9-Z4088	1	FRONT PANEL SDW2NC
	E9-Z4096	1	FRONT PANEL SDW3NC
21	2E-Z4062	2/3	CONTROL W/ SENSOR 120V SDW2NC / SDW3NC
	2E-Z4153	2/3	CONTROL W/ SENSOR 230V SDW2NC / SDW3NC
22	2K-Z1971	10/15	CONTROL BOARD SPACER SDW2NC / SDW3NC
23	E9-DW0007	2/3	DRAWER ASSEMBLY SDW2NC / SDW3NC
24	2P-Z0315	16/24	GUIDE BEARING SDW2NC / SDW3NC
NI	2C-1810	16/24	WASHER SDW2NC / SDW3NC
NI	2C-Z0498	16/24	NUT SDW2NC / SDW3NC
25	2D-Y6177	2/3	FULL SIZE PAN 6" SDW2NC / SDW3NC
26	E9-DW0009	2/3	DAMPER ASSEMBLY SDW2NC / SDW3NC
27	E9-DW0008	2/3	DRAWER LINER ASSEMBLY SDW2NC / SDW3NC
28	E9-Z4049	2/3	DRAWER FRONT SDW2NC / SDW3NC
29	2R-Y7557	2/3	DRAWER PULL SDW2NC / SDW3NC
30	E9-Z3985	4/6	ELEMENT BRACKET SDW2NC / SDW3NC
31	E9-DW0001	1	BOTTOM ASSEMBLY
32	2R-Z4054	2/3	KNOB SDW2NC / SDW3NC
33	E9-Z4260	1	SIDE STIFFENER
34	E9-DW0033	2/3	DRAWER FRONT ASSY COMPLETE SDW2NC / SDW3NC
35	E9-DW0034	2/3	DRAWER FRAME W/ROLLERS SDW2NC / SDW3NC
34/35	E9-DW0032	2/3	DRAWER ASSY COMPLETE SDW2NC / SDW3NC
N/A	E9-Z4079	1	INSULATION SIDE SDW2NC
N/A	E9-Z4107	1	INSULATION SIDE SDW3NC
N/A	E9-Z4080	1	INSULATION REAR SDW2NC
N/A	E9-Z4108	1	INSULATION REAR SDW3NC
N/A	E9-Z3981	1	INSULATION TOP
N/A	E9-Z3977	2/3	INSULATION BOTTOM SDW2NC / SDW3NC
N/A	E9-Z3980	2/3	INSULATION DRAWER FRONT SDW2NC / SDW3NC

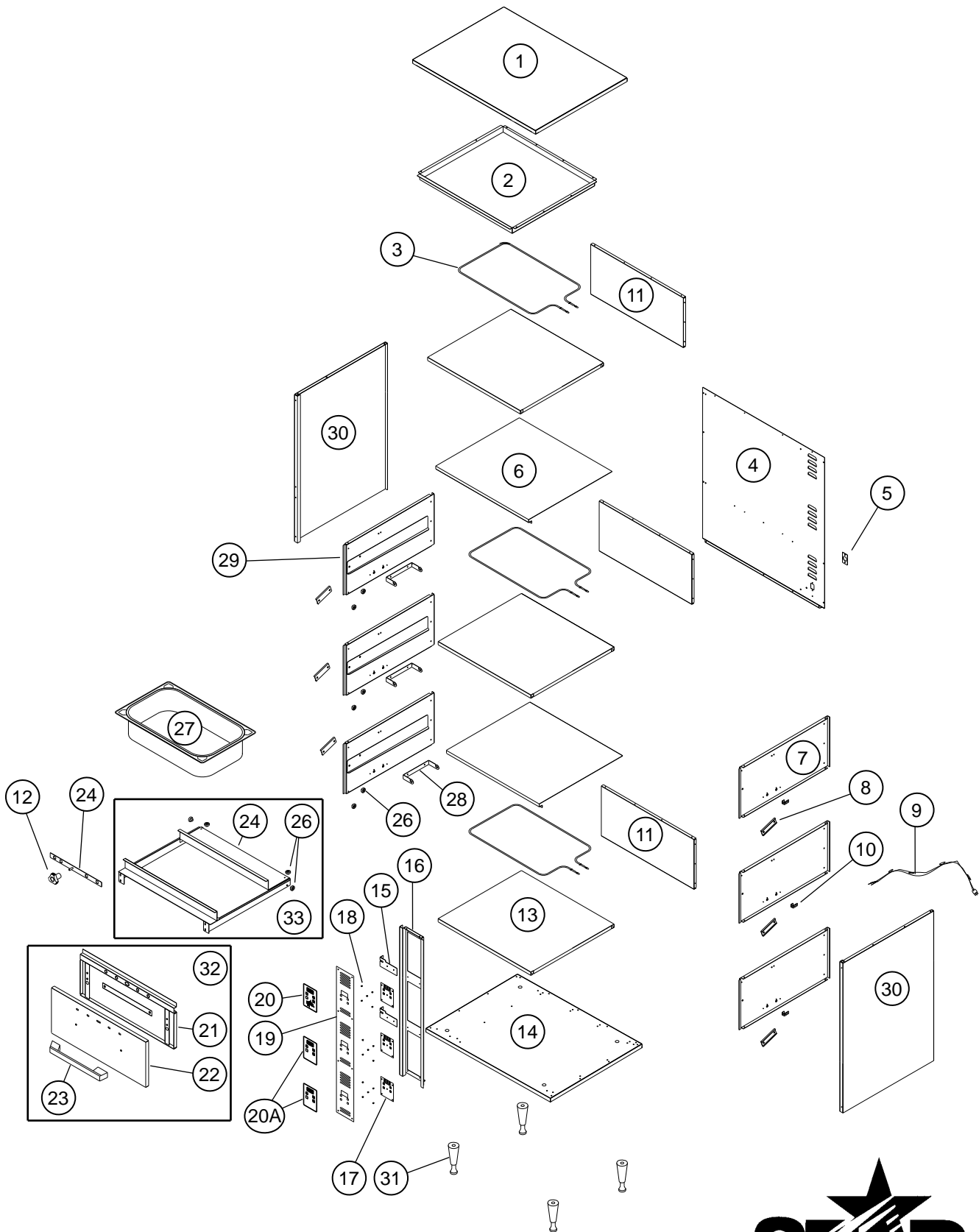
**IMPORTANT: WHEN ORDERING, SPECIFY VOLTAGE OR TYPE GAS DESIRED
INCLUDE MODEL AND SERIAL NUMBER**

PAGE 1
OF 1

Some items are included for illustrative purposes only and in certain instances may not be available.



Star International Holdings Inc. Company



MODEL SDW3C SHOWN
DRAWER WARMER



SOME ITEMS ARE INCLUDED FOR
ILLUSTRATIVE PURPOSES ONLY AND IN
CERTAIN INSTANCES MAY NOT BE AVAILABLE

MODEL - SDW2C, SDW3C

STAR MANUFACTURING INTERNATIONAL, INC.

SK1841

REV. A

4/17/01

PARTS LIST

May 7, 2010, Rev. C

MODEL SDW2C, SDW3C Drawer Warmers

Key Number	Part Number	Number Per Unit	Description and Model Designation
1	E9-Z4031	1	TOP PANEL
2	E9-Z4022	1	TOP LINER
3	2N-Z4057	2/3	HEATING ELEMENT 120V
	2N-Z4154	2/3	HEATING ELEMENT 230V
4	E9-Z4089	1	BACK PANEL
	E9-Z4097	1	BACK PANEL
5	E9-Z4027	1	ADAPTER PLATE 120V
	2K-Y2967	1	CORD BUSHING 120V
	2E-Y9227	1	INLET 230V
6	E9-Z4113	1/2	DIVIDER PANEL
7	E9-DW0004	2/3	LINER ASSEMBLY RIGHT
8	E9-Z3987	4/6	BEARING STIFFENER
9	A5-250027	1	LEAD IN CORD 120V
	2E-Z0512	1	LEAD IN CORD 230V
10	E9-Z3986	2/3	SENSOR BRACKET
11	E9-Z4026	2/3	REAR LINER
12	2R-Z4054	2/3	KNOB
13	E9-Z4009	2/3	BOTTOM LINER
14	E9-DW0002	1	BOTTOM ASSEMBLY
15	E9-Z4078	1/2	GUSSET
16	EP-DW0023	1	CONTROL PANEL ASSY
	E9-DW0024	1	CONTROL PANEL ASSY
17	2E-Z4062	2/3	CONTROL W/ SENSOR 120V
	2E-Z4153	2/3	CONTROL W/ SENSOR 230V
18	2K-Z1971	10/15	CONTROL BOARD SPACER
19	E9-Z4088	1	FRONT PANEL
	E9-Z4096	1	FRONT PANEL
20	2M-Z4247	1/2	GRAPHICS PANEL
21	E9-DW0011	2/3	DRAWER LINER ASSEMBLY
22	E9-Z4050	2/3	DRAWER FRONT
23	2R-Y7557	2/3	DRAWER PULL
24	E9-DW0009	2/3	DAMPER ASSEMBLY
25	E9-DW0010	2/3	DRAWER ASSEMBLY
26	2P-Z0315	16/24	GUIDE BEARING
NI	2C-1810	16/24	WASHER
NI	2C-Z0498	16/24	NUT
27	2D-Y6177	2/3	FULL SIZE PAN 6"
28	E9-Z4016	2/3	ELEMENT BRACKET
29	E9-DW0003	2/3	LINER ASSEMBLY LT
30	E9-Z4090	2	SIDE PANEL
	E9-Z4098	2	SIDE PANEL
31	2R-Y5092	4	4" FOOT
32	E9-DW0030	2/3	DRAWER FRONT COMPLETE
33	E9-DW0031	2/3	DRAWER FRAME W/ROLLERS
32/33	E9-DW0029	2/3	DRAWER ASSEMBLY COMPLETE
N/A	E9-Z4092	1	INSULATION SIDE
N/A	E9-Z4100	1	INSULATION SIDE
N/A	E9-Z4093	1	INSULATION REAR
N/A	E9-Z4101	1	INSULATION REAR
N/A	E9-Z4012	3/4	INSULATION TOP/BOTTOM
N/A	E9-Z4015	2/3	INSULATION DRAWER FRONT

**IMPORTANT: WHEN ORDERING, SPECIFY VOLTAGE OR TYPE GAS DESIRED
INCLUDE MODEL AND SERIAL NUMBER**

PAGE 1
OF 1

Some items are included for illustrative purposes only and in certain instances may not be available.



Star International Holdings Inc. Company

STAR INTERNATIONAL HOLDINGS INC. COMPANY
Star - Holman - Lang - Wells - Bloomfield - Toastmaster
10 Sunnen Drive, St. Louis, MO 63143 U.S.A.
(800) 807-9054 (314) 781-2777
Parts & Service (800) 807-9054
www.star-mfg.com