

Infinite and Electronic Controls

2M-Z8542 Rev.H 2/17/10



SAFETY SYMBOL



These symbols are intended to alert the user to the presence of important operating and maintenance instructions in the manual accompanying the appliance.

RETAIN THIS MANUAL FOR FUTURE REFERENCE NOTICE

Using any part other than genuine Star factory supplied parts relieves the manufacturer of all liability.

Star reserves the right to change specifications and product design without notice. Such revisions do not entitle the buyer to corresponding changes, improvements, additions or replacements for previously purchased equipment.

Due to periodic changes in designs, methods, procedures, policies and regulations, the specifications contained in this sheet are subject to change without notice. While Star Manufacturing exercises good faith efforts to provide information that is accurate, we are not responsible for errors or omissions in information provided or conclusions reached as a result of using the specifications. By using the information provided, the user assumes all risks in connection with such use.

MAINTENANCE AND REPAIRS

Contact your local authorized service agent for service or required maintenance. Please record the model number, serial number, voltage and purchase date in the area below and have it ready when you call to ensure faster service.

Model No. _____
Serial No. _____
Voltage _____
Purchase Date _____

Authorized Service Agent

Reference the listing provided with the unit

or

for an updated listing go to:

Website: www.star-mfg.com
E-mail Service@star-mfg.com
Telephone: (800) 807-9054 Local (314) 781-2777

The Star Service Help Desk

Business Hours: 8:00 am to 4:30 p.m. Central Standard Time

Telephone: (800) 807-9054 Local (314) 781-2777

Fax: (800) 396-2677 Local (314) 781-2714

E-mail Parts@star-mfg.com
Service@star-mfg.com
Warranty@star-mfg.com

Website: www.star-mfg.com

Mailing Address: Star Manufacturing International Inc.
10 Sunnen Drive
St. Louis, MO 63143
U.S.A

TABLE OF CONTENTS

	PAGE NUMBER
GENERAL SAFETY INFORMATION	3
GENERAL INSTALLATION INFORMATION	4
Connection Load	4
GENERAL OPERATING INSTRUCTIONS	5
Cleaning	5
ELECTRONICALLY CONTROLLED:	
Start-up, Heating & Programming	6
WARRANTY	7
WIRING DIAGRAM	8-13
EXPLODED VIEW (C Series)	14, 15
PARTS LIST	
20 MODEL SERIES	16
30 MODEL SERIES	17, 18
45 MODEL SERIES	19, 20
50 MODEL SERIES	21, 22
75 MODEL SERIES	23, 24
EXPLODED VIEW (iC/ISC Island Series)	26
PARTS LIST	
54 MODEL SERIES	27, 28
30 MODEL SERIES	29, 30



GENERAL SAFETY INFORMATION

This equipment is designed and sold for commercial use only by personnel trained and experienced in its operation and is not sold for consumer use in and around the home nor for use directly by the general public in food service locations.

Before using your new equipment, read and understand all the instructions & labels associated with the unit prior to putting it into operation. Make sure all people associated with its use understand the units operation & safety before they use the unit.

All shipping containers should be checked for freight damage both visible and concealed. This unit has been tested and carefully packaged to insure delivery of your unit in perfect condition. If equipment is received in damaged condition, either apparent or concealed, a claim must be made with the delivering carrier.

Concealed damage or loss - if damage or loss is not apparent until after equipment is unpacked, a request for inspection of concealed damage must be made with carrier within 15 days. Be certain to retain all contents plus external and internal packaging materials for inspection. The carrier will make an inspection and will supply necessary claim forms.

GENERAL INSTALLATION INFORMATION

The grill should be connected to a wall type receptacle, a direct line or individual branch circuit. An individual branch circuit is preferred. If connected to an overloaded circuit the grill will not operate properly. The unit should be level when installed. Models equipped with bun boxes must be level to utilize the self-closing feature of the bun drawer. Adjustable 4-inch legs are standard on the 75 series and available for all other models.

This grill is equipped for the voltage shown on the nameplate.

It will operate on alternating current only, however, the specified voltage must be applied.

CONNECTION LOAD:

INFINITE CONTROL		ELECTRONIC CONTROL	
MODEL SERIES	WATTAGE	MODEL SERIES	WATTAGE
20C, 20SC	930	20SCE	930
30C, 30SC, 30CF, 30SCF, 30CBB, 30CBBC, 30SCBB, 30CDV	1150	30CE, 30SCE, 30SCEX, 30CBBE, 30SCBBE	1150
45C, 45SC, 45CBB, 45SCBB, 45CDV	1650	45SCE, 45SCRE	1650
50C, 50SC, 50CF, 50SCF, 50CBB, 50CBBC, 50SCBB, 50CDV	1535	50CE, 50SCE, 50SCEX, 50CBBE, 50SCBBE, 50CBBES	1535
54IC, 54ISC	1760	54ICE, 54ISCE	1760
75C, 75SC, 75CBB, 75SCBB, 75FF, 75SCF 208/240V	1810/2400	75CE, 75SCE, 75CBBE, 75CBBES, 75SCBBE, 75SCRE 208/240V, 75SCFE	1810/2400
75C, 75SC, 75CBB, 75SCBB, 75CDV 230V	2210	75CE, 75SCE, 75CBBE, 75SCBBE, 75SCRE 120V	1730
75C, 75CF, 75SC, 75SCF, 75CBB, 75SCBB, 75CDV 120V	1700	90ICE, 90ISCE 208V	2133
75CFV 120V	2880	90ICE, 90ISCE 240V	2840
90IC, 90ISC 208V	2133		
90IC, 90ISC 240V	2840		



WARNING

DO NOT CONNECT TO DIRECT CURRENT (DC).

IMPORTANT

UNEVEN UNITS COULD RESULT IN HAVING PRODUCT TRAVEL FROM ONE SIDE TO THE NEXT, OVER A PERIOD OF TIME.

GENERAL OPERATING PROCEDURES

The main switch located on the control panel controls all the power to the unit. With the main switch on, the rollers will turn, but no heat will be supplied unless the heat controls are turned on. For flexibility the heating section of the grill is divided into two individually controlled heat sections. The right control regulates the heat to the rear section and the left control regulates the heat to the front section. The switch is lighted to indicate when the unit is turned on. On Infinite control grills a signal light is provided above each heat control and indicates when the heated section is on. An additional light is provided on the end housing of the unit. This light indicates the position of the main power switch when either the optional bun drawer front or merchandising door obstructs the control panel view. Bun box equipped models require the removal of the bun drawer to remove the bun pan and to remove the drip tray when access to the rear of the unit is obstructed. To remove the bun drawer, grab the drawer by both sides and pull it out all the way. Lift the front to unhook the drawer slide from rear drawer roller. Pull the drawer the remainder of the way out. Use caution not to drop the drawer when reaching the end of the drawer slide travel. To reinsert the drawer, first hook the drawer slide over the front roller then the back roller. Do not operate the grill without the drip tray in place.

COOKING

The heat controls provide an infinite range of settings for a wide variety of food products and installation conditions. The size, content and shape of the product and the installation of any sanitary food shields or sneeze guards will determine the proper heat setting. The National Sanitation Foundation requires that perishable foods be kept at 140°F or above during serving periods. Do not keep the food product on a low setting for more than two hours. The product should be kept refrigerated until ready for use. Cooking time will vary depending on the starting temperature and the qualities of the product. For best results when cooking hot dogs use a hot dog made for grilling.



USE ONLY PLASTIC OR COATED UTENSILS FOR HANDLING THE FOOD PRODUCT. METAL COULD SCRATCH THE ROLLER COATING AND AFFECT THE CLEAN ABILITY OF THE ROLLERS.



DO NOT USE STEEL WOOL OR ABRASIVE CLEANERS ON THE ROLLERS. SCRAPES WILL VOID THE WARRANTY. USE CAUTION WHEN CLEANING A HOT GRILL TO PREVENT BURNS OR BODILY INJURY.

CLEANING

Before cooking for the first time, wash the rollers with mild soap and water using a soft cloth. Do not use metal utensils when cooking. Scratches and scrapes will hamper the ability to easily clean the rollers. Never use steel wool or abrasive cleaners on the rollers. This will damage the finish and the roller bearings. The rollers clean most easily when hot. Use caution when cleaning to prevent burns and bodily injury. Clean the rollers with a clean wet cloth. Wipe from the ends to the center to prevent forcing debris into the roller seals. Do not allow the food product to build up and bake onto the roller surface. The exterior of the unit should be cleaned using a mild detergent or non-abrasive cleaner. Clean the entire unit daily to insure long life and satisfactory performance as well as to maintain an attractive appearance. Do not clean with water jet equipment.

MAINTENANCE AND REPAIRS

Contact the factory, a service representative or a local service company for service or required maintenance. Replacement cord sets must be purchased from Star Manufacturing International, Inc.

OPERATING PROCEDURES FOR ELECTRONIC GRILLS

START-UP

When initially turning on power to the electronic controlled grill, it will be in the HOLD mode. The displays will flash until the setpoint temperature is reached. The grill will beep once when it is up to temperature. Infinite controlled grills have no notification when operating temperature is reached.

HEATING

The size, content, and shape of the product and the installation of any sanitary food shields or sneeze guards will determine the proper heat setting. The National Sanitation Foundation requires that all perishable foods be kept at 140°F or above during serving periods.

The product should be kept refrigerated until ready to use. Heating times vary depending on the starting temperature and the qualities of the product. For best results, use a hot dog made for grilling.

Before cooking for the first time, wash the rollers with mild soap and water using a soft cloth. When the electronic controlled grills are initially turned on, the displays will flash the HOLD temperature until the grill reaches that setpoint.



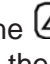
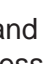



With the grill preheated to the hold temperature, load with the desired product and press the HEAT button. The grill will then go into the heat mode and the displays will flash until the HEAT temperature is reached. After the heating cycle, the grill will beep four times and the food product will be at the serving temperature.

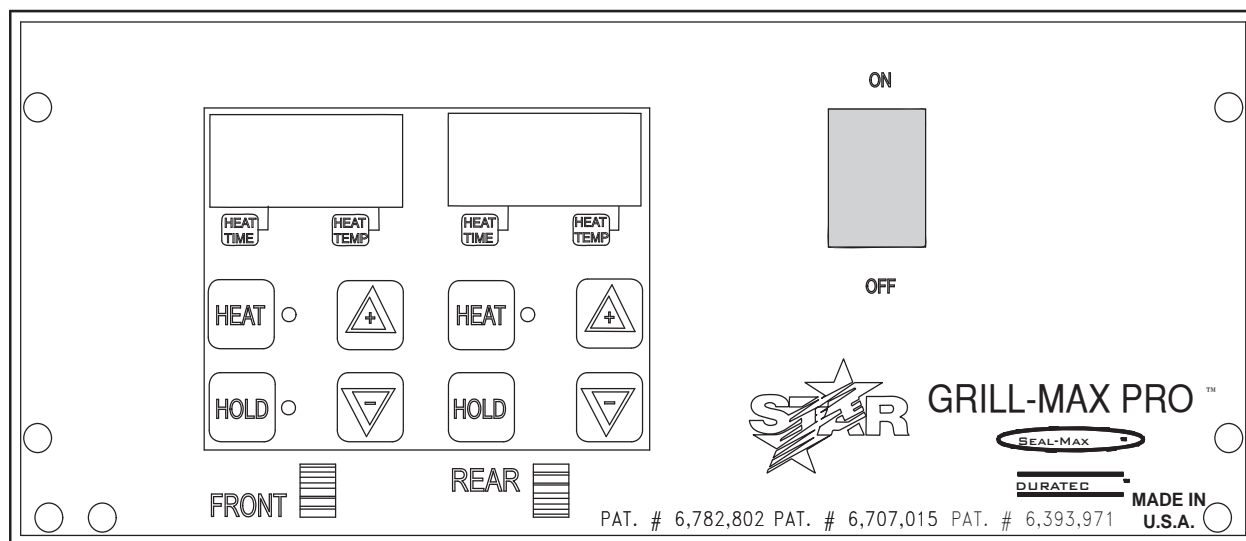
NOTE: Based on the product being heated, some experimentation is required to find the optimal HEAT temperature and HEAT time to bring the product up to temperature in an acceptable amount of time.

PROGRAMMING

The electronic controls provide programmable HEAT and HOLD settings for a variety of food products and installation conditions.

To program the electronic roller grill:

1. With the grill on, push and hold the  and  on the side you wish to program together for three seconds until the alarm beeps once and the display blanks.
2. To set the heat temperature and/or heat time, push the heat button. The last saved heat time will be displayed and the HEAT LED will flash and HEAT TIME indicator will be ON. Use the  and  buttons to adjust to the desired time, then press the HEAT button again. The HEAT TIME LED indicator will turn off and the HEAT TEMP LED indicator will now be lit. When programming the HEAT temperature is complete, push the HEAT button one more time to exit the programming mode.
3. To set the hold temperature, repeat step 1 above then push the HOLD button. The last saved hold temperature will be displayed and HOLD LED will be ON. Use the  and  buttons to adjust to the desired temperature, then press the HOLD button again to exit programming mode.
4. To turn the heat off to the front or rear section, press and hold the  for that section for 3 seconds. "OFF" will be displayed. To turn the section back on, press the HEAT or HOLD button.



Electronic Control Board

THOROUGHLY INSPECT YOUR UNIT ON ARRIVAL

This unit has been tested for proper operation before leaving our plant to insure delivery of your unit in perfect condition. However, there are instances in which the unit may be damaged in transit. In the event you discover any type of damage to your product upon receipt, you must immediately contact the transportation company who delivered the item to you and initiate your claim with same. If this procedure is not followed, it may affect the warranty status of the unit.

LIMITED EQUIPMENT WARRANTY

All workmanship and material in Star products have a one (1) year limited warranty on parts & labor in the United States and Canada. Such warranty is limited to the original purchaser only and shall be effective from the date the equipment is placed in service. Star's obligation under this warranty is limited to the repair of defects without charge, by the factory authorized service agency or one of its sub-agencies. Models that are considered portable (*see below*) should be taken to the closest Star service agency, transportation prepaid.

- > Star will not assume any responsibility for loss of revenue.
- > On all shipments outside the United States and Canada, see International Warranty.
- * The warranty period for the JetStar six (6) ounce & Super JetStar eight (8) ounce series popcorn machines is two (2) years.
- * The warranty period for the Chrome-Max Griddles is five (5) years on the griddle surface. See detailed warranty provided with unit.
- * The warranty period for Teflon/Dura-Tec coatings is one year under normal use and reasonable care. This warranty does not apply if damage occurs to Teflon/Dura-Tec coatings from improper cleaning, maintenance, use of metallic utensils, or abrasive cleaners, abrasive pads, product identifiers and point-of-sale attachments, or any other non-food object that comes in continuous contact with the roller coating. This warranty does not apply to the "non-stick" properties of such materials.
- > This warranty does not apply to "Special Products" but to regular catalog items only. Star's warranty on "Special Products" is six (6) months on parts and ninety (90) days on labor.
- > This warranty does not apply to any item that is disassembled or tampered with for any purpose other than repair by a Star Authorized Service Center or the Service Center's sub-agency.
- > This warranty does not apply if damage occurs from improper installation, misuse, wrong voltage, wrong gas or operated contrary to the Installation and Operating instructions.
- > This warranty is not valid on Conveyor Ovens *unless* a "start-up/check-out" has been performed by a Factory Authorized Technician.

PARTS WARRANTY

Parts that are sold to repair out of warranty equipment are warranted for ninety (90) days. The part only is warranted. Labor to replace the part is chargeable to the customer.

SERVICES NOT COVERED BY WARRANTY

- | | |
|--|---|
| 1. Travel time and mileage rendered beyond the 50 mile radius limit | 10. Voltage conversions |
| 2. Mileage and travel time on portable equipment (<i>see below</i>) | 11. Gas conversions |
| 3. Labor to replace such items that can be replaced easily during a daily cleaning routine, ie; removable kettles on fryers, knobs, grease drawers on griddles, etc. | 12. Pilot light adjustment |
| 4. Installation of equipment | 13. Miscellaneous adjustments |
| 5. Damages due to improper installation | 14. Thermostat calibration and by-pass adjustment |
| 6. Damages from abuse or misuse | 15. Resetting of circuit breakers or safety controls or reset buttons |
| 7. Operated contrary to the Operating and Installation Instructions | 16. Replacement of bulbs |
| 8. Cleaning of equipment | 17. Replacement of fuses |
| 9. Seasoning of griddle plates | 18. Repair of damage created during transit, delivery, & installation OR created by acts of God |

PORTABLE EQUIPMENT

Star will not honor service bills that include travel time and mileage charges for servicing any products considered "Portable" including items listed below. These products should be taken to the Service Agency for repair:

- * The Model 510FD Fryer.
- * The Model 526TOA Toaster Oven.
- * The Model J4R, 4 oz. Popcorn Machine.
- * The Model 518CMA & 526CMA Cheese Melter.
- * The Model 12MC & 15MC & 18MCP Hot Food Merchandisers.
- * The Model 12NCPW & 15NCPW Nacho Chip/Popcorn Warmer.
- * All Hot Dog Equipment **except Roller Grills & Drawer Bun Warmers.**
- * All Nacho Cheese Warmers **except Model 11WLA Series Nacho Cheese Warmer.**
- * All Condiment Dispensers **except the Model HPD & SPD Series Dispenser.**
- * All Specialty Food Warmers **except Model 130R, 11RW Series, and 11WSA Series.**
- * All QCS/RCS Series Toasters **except Model QCS3 & RCS3 Series.**

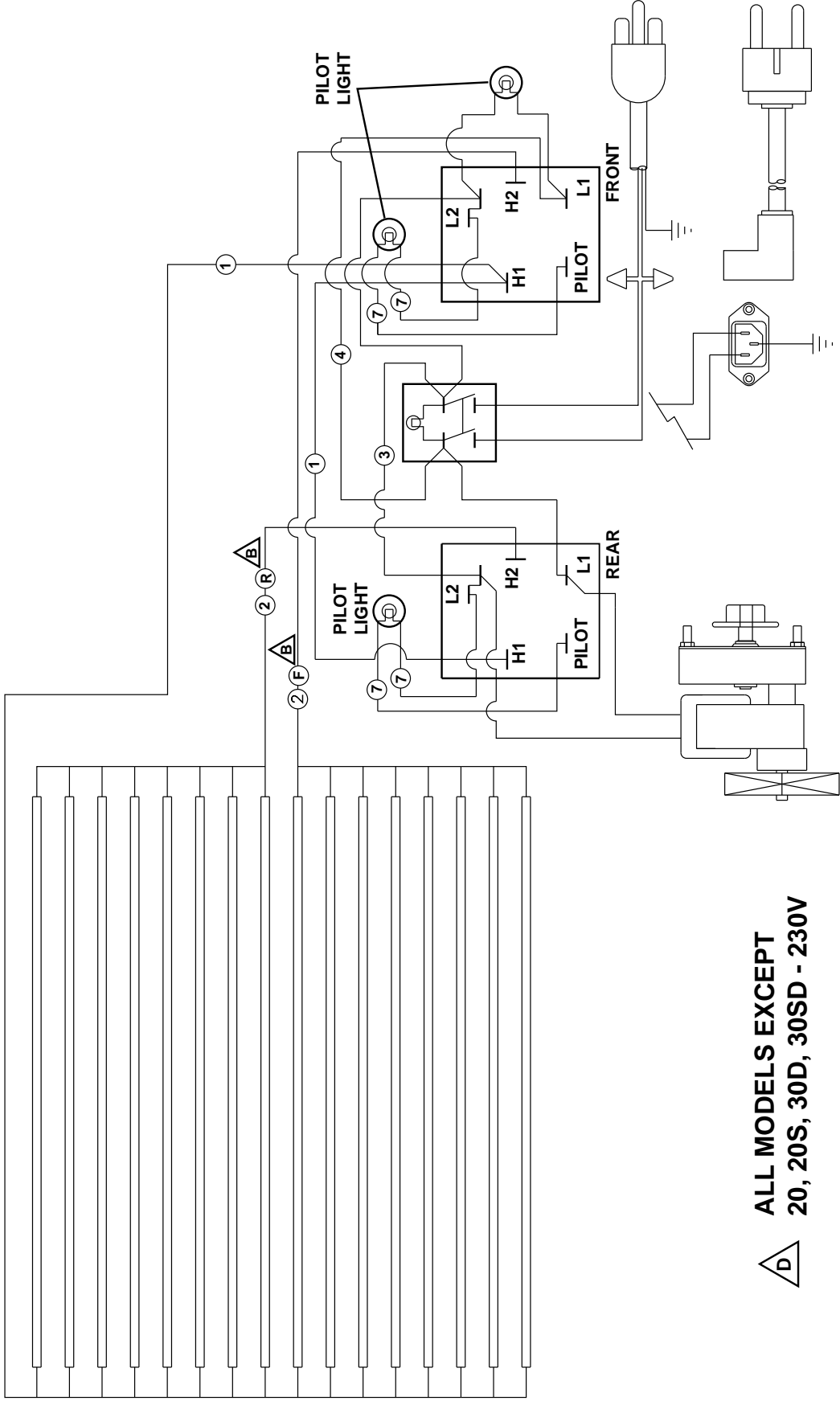
ALL:

- * Pop-Up Toasters
- * Butter Dispensers
- * Pretzel Merchandisers
(Model 16PD-A Only)
- * Pastry Display Cabinets
- * Nacho Chip Merchandisers
- * Accessories of any kind
- * Sneeze Guards
- * Pizza Ovens
(Model PO12 Only)
- * Heat Lamps
- * Pumps-Manual

The foregoing warranty is in lieu of any and all other warranties expressed or implied and constitutes the entire warranty.

FOR ASSISTANCE

Should you need any assistance regarding the Operation or Maintenance of any Star equipment; write, phone, fax or email our Service Department. In all correspondence mention the Model number and the Serial number of your unit, and the voltage or type of gas you are using.



**ALL MODELS EXCEPT
20, 20S, 30D, 30SD - 230V**

MODEL: RG SERIES, INFINITE CONTROLS

THIS DRAWING CONTAINS INFORMATION CONFIDENTIAL TO STAR MFG. INTL. INC.
NO REPRODUCTION OR DISCLOSURE OF ITS CONTENTS IS PERMITTED.



STAR MANUFACTURING INTERNATIONAL INC.

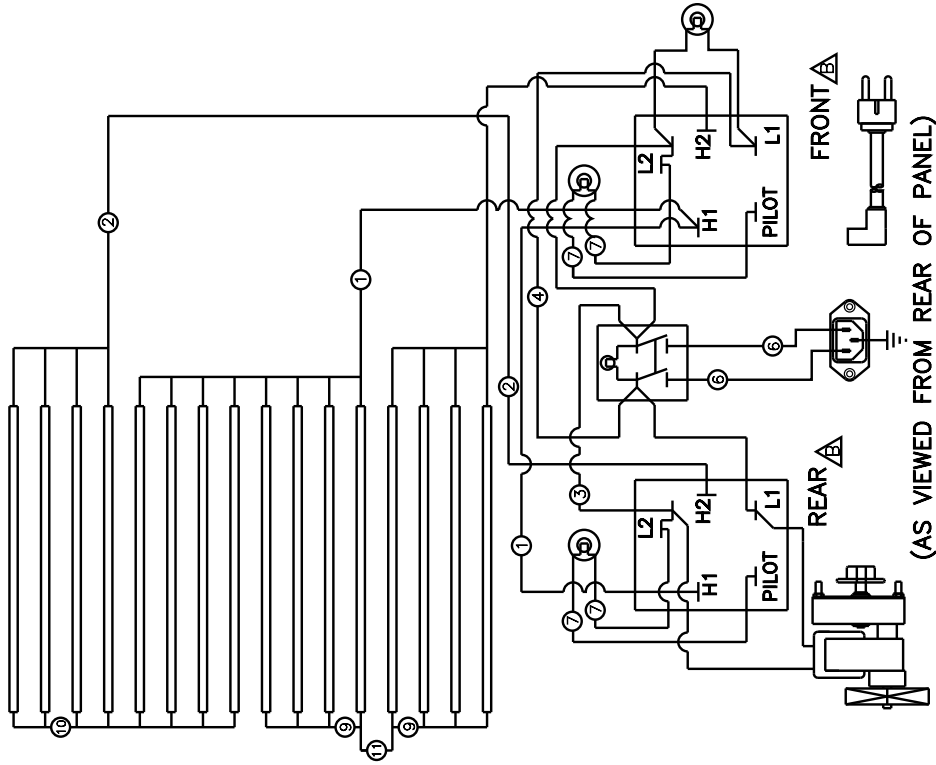
SK1646

Rev D

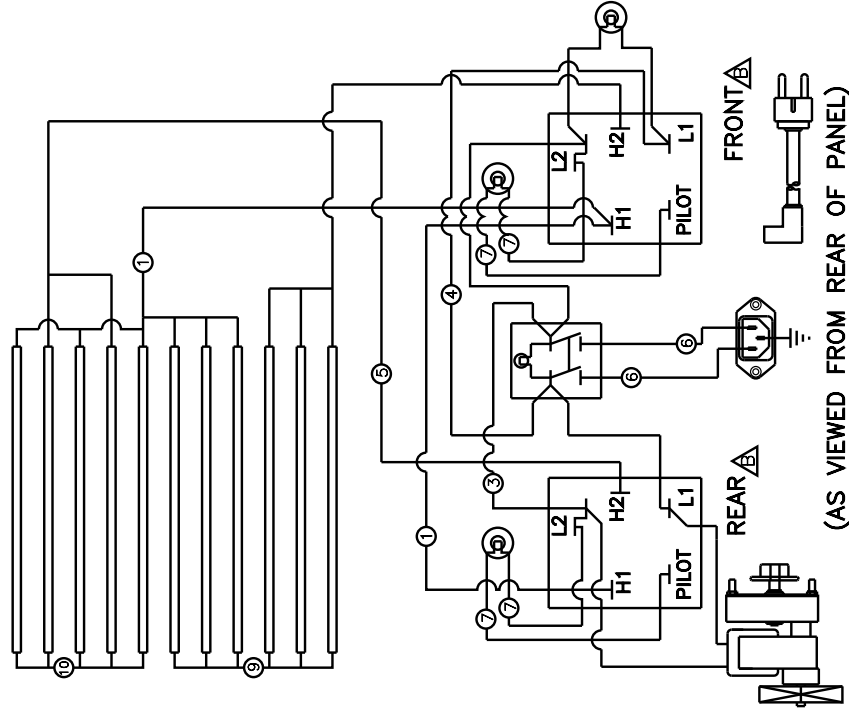
8/07/2000




DR. BN	CK.	DATE	6/16/00	~	REVISIONS	LTR	DATE	DESCRIPTION OF CHANGE	DR
TOLERANCES UNLESS OTHERWISE NOTED				THIS DRAWING CONTAINS INFORMATION CONFIDENTIAL TO STAR MFG. INT'L. INC.					
FRACTIONS \pm 1/64 DECIMALS \pm .005				NO REPRODUCTION OR DISCLOSURE OF ITS CONTENTS IS PERMITTED.					
				B 6/16/00					
				REDRAWN FOR CLARITY					
				BN					

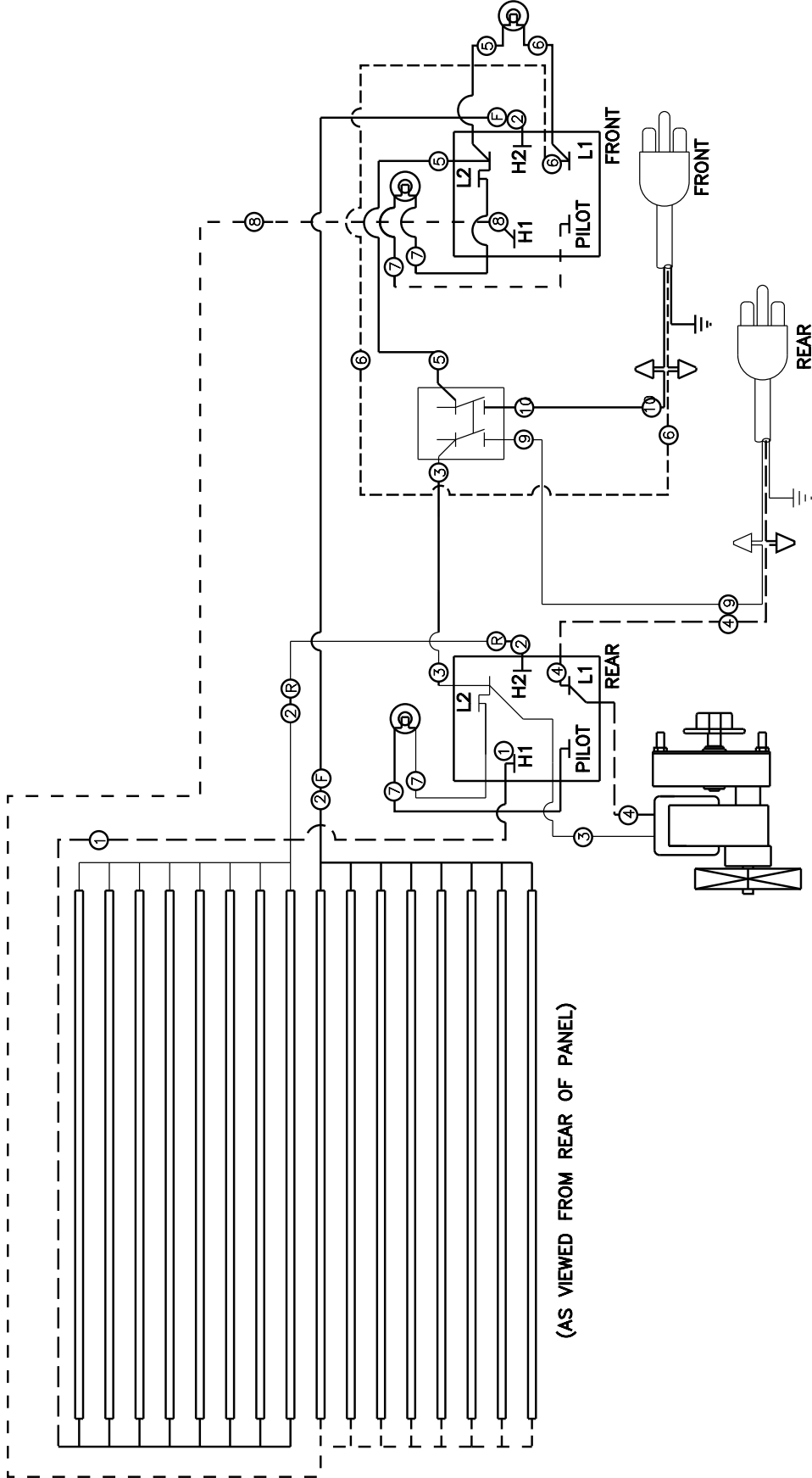


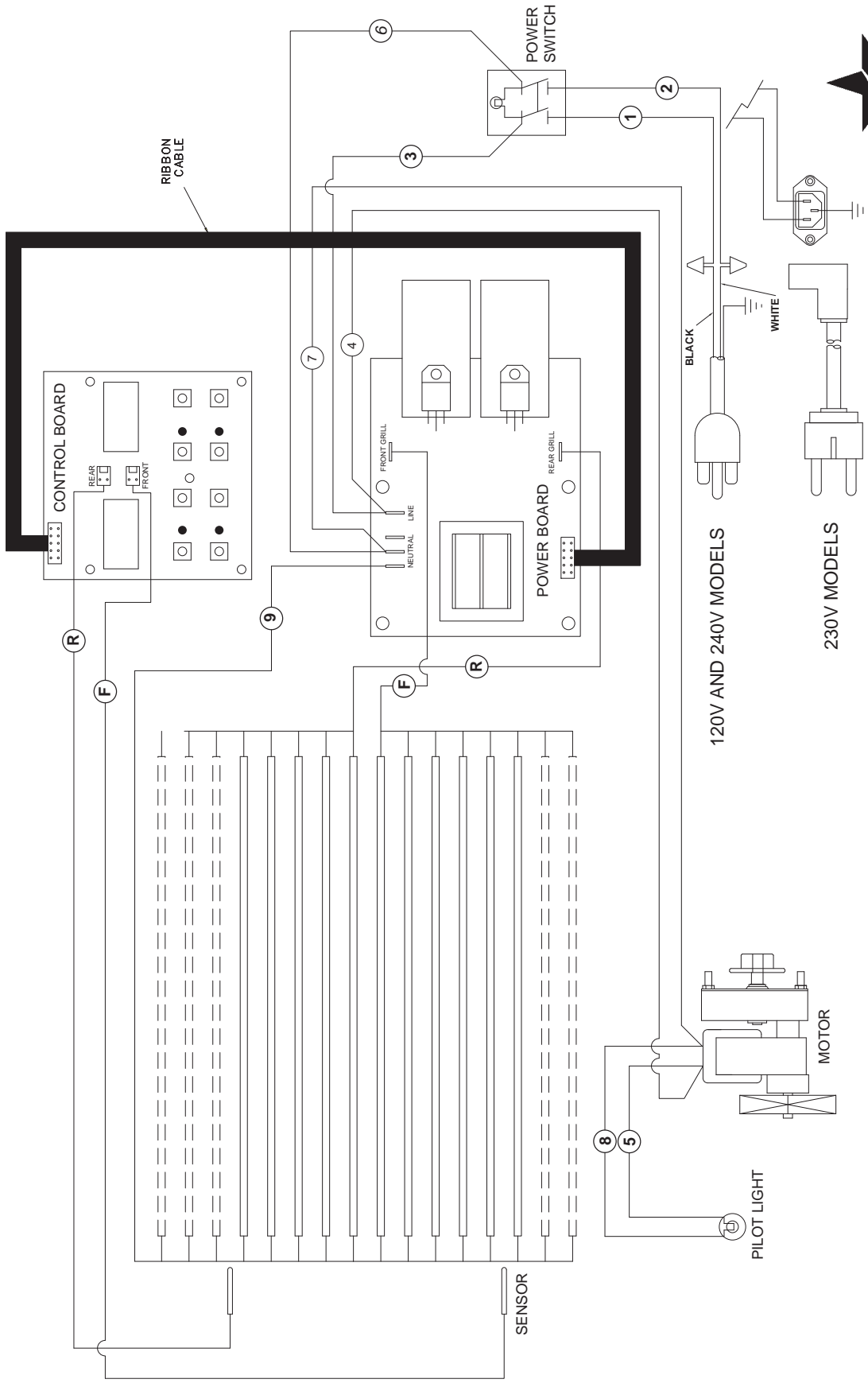
MODEL 30D & 30SD 230 VOLT



MODEL 20 & 20S 230 VOLT

 STAR MANUFACTURING INTERNATIONAL INC. #10 SUMNER DRIVE, ST. LOUIS, MO. 63143, USA				MATERIAL		MODEL NO.		PART NO.			
DR				DWD		CK.		DATE		11/12/02	
TOLERANCES UNLESS OTHERWISE NOTED FRACTIONS ±1/64 DECIMALS ±.005 ANGLES ±1°				FINISH		-		75AFV		SK1917	
THIS DRAWING CONTAINS INFORMATION CONFIDENTIAL TO STAR MFG. INT'L INC. NO REPRODUCTION OR DISCLOSURE OF ITS CONTENTS IS PERMITTED.				-		-		-		-	
REVISIONS				LTR		DATE		DESCRIPTION OF CHANGE			
-				-		-		DR			





MODEL: RGE SERIES, ELECTRONIC CONTROLS

THIS DRAWING CONTAINS INFORMATION CONFIDENTIAL TO STAR MFG. INT'L. INC.
NO REPRODUCTION OR DISCLOSURE OF ITS CONTENTS IS PERMITTED.

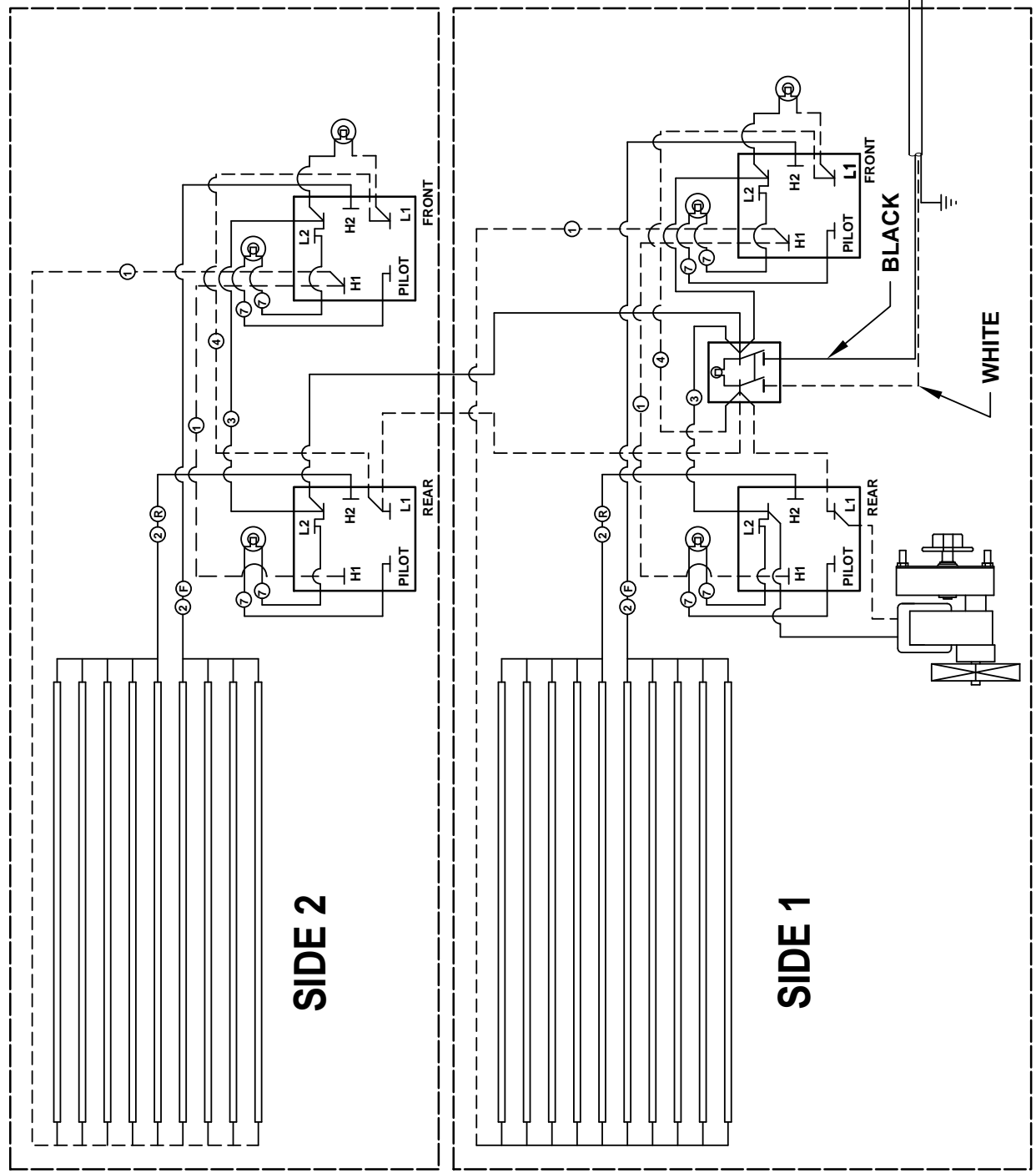


STAR MANUFACTURING INTERNATIONAL INC.

SK1913

Rev -

9/17/2002



MODEL: IC/SC ISLAND INFINITE CONTROL

THIS DRAWING CONTAINS INFORMATION CONFIDENTIAL TO STAR MFG. INT'L. INC.
NO REPRODUCTION OR DISCLOSURE OF ITS CONTENTS IS PERMITTED.

STAR MANUFACTURING INTERNATIONAL INC.

SK2132 Rev. - 4/28/2005

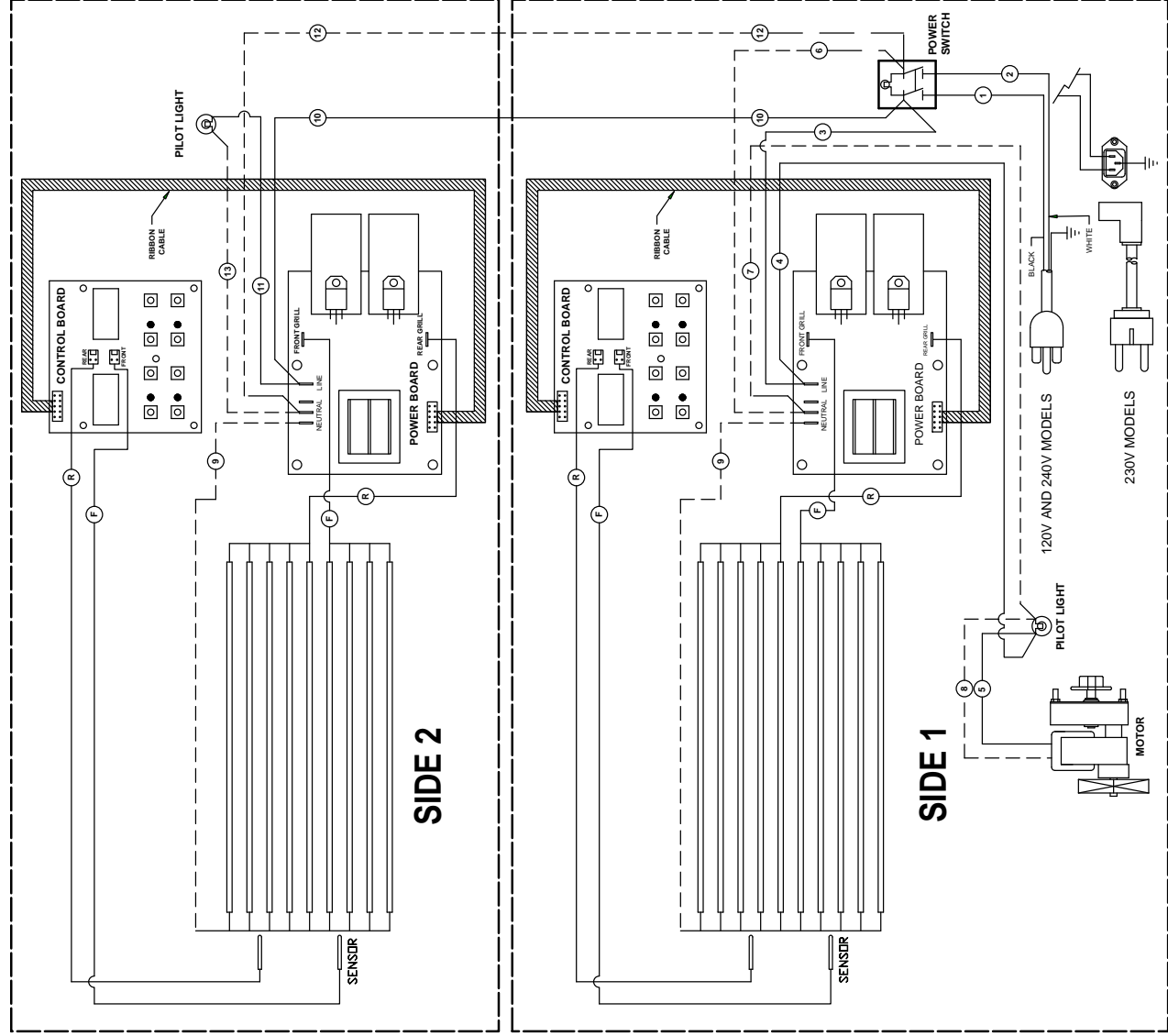


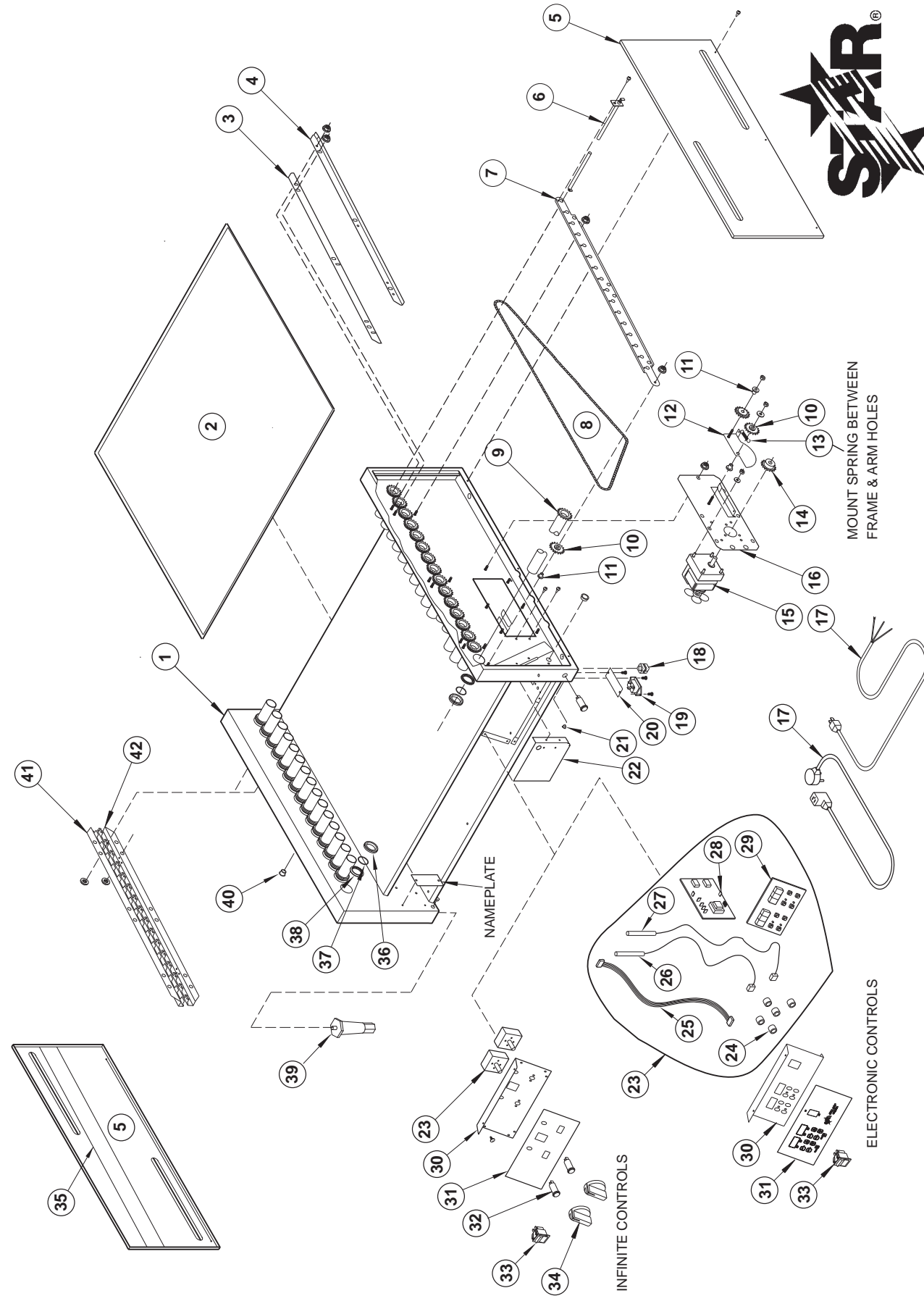
MODEL: ICE/ISCE ISLAND ELECTRONIC CONTROL

THIS DRAWING CONTAINS INFORMATION CONFIDENTIAL TO STAR MFG. INT'L INC.
NO REPRODUCTION OR DISCLOSURE OF ITS CONTENTS IS PERMITTED.

STAR MANUFACTURING INTERNATIONAL INC.

SK2197 Rev. - 5/24/2006





REFER TO THE PARTS LIST SPECIFIC TO YOUR MODEL FOR MORE DETAIL INFORMATION.

STAR MANUFACTURING INTERNATIONAL INC.

SK2109

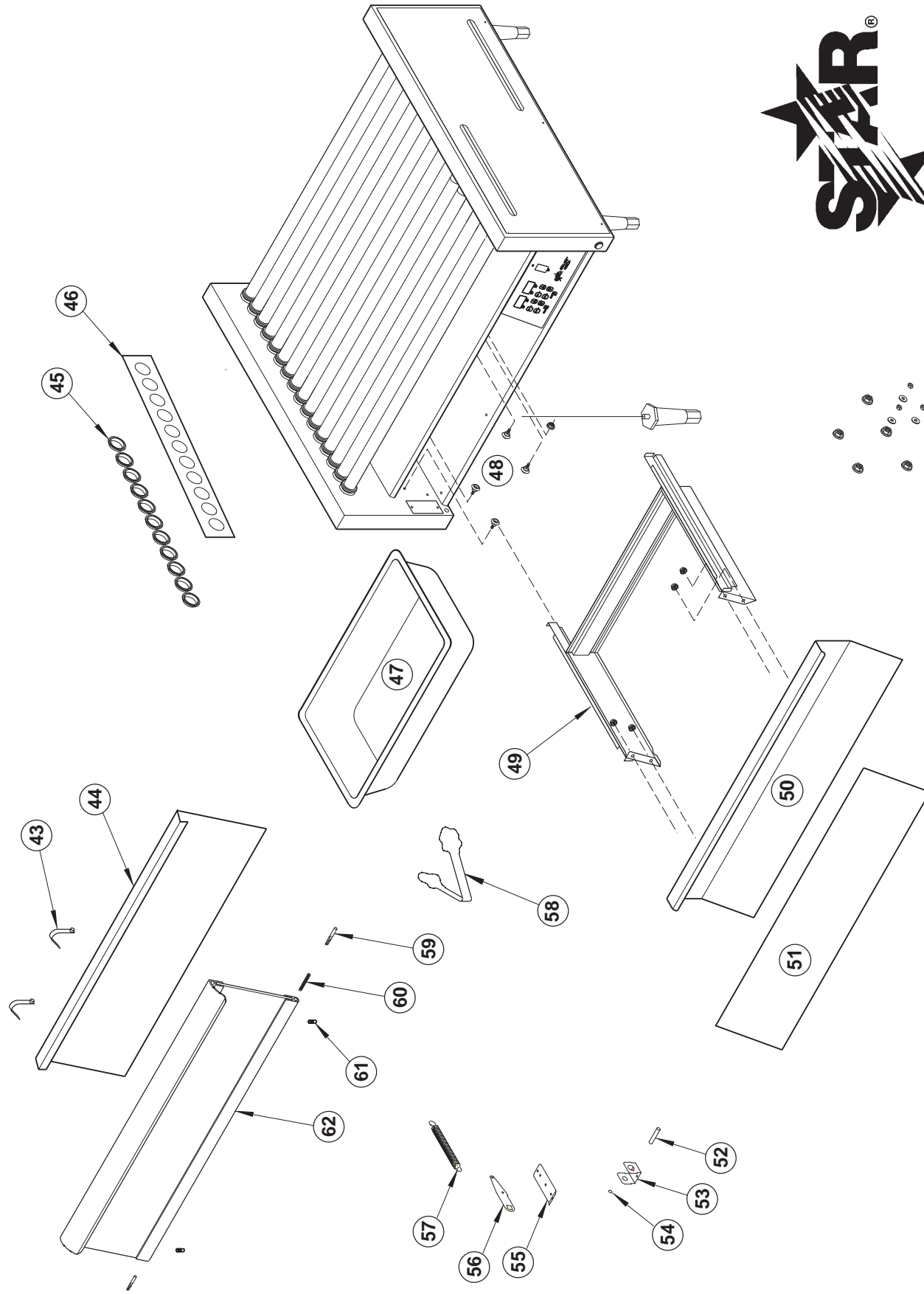
01-14-05



STAR MANUFACTURING INTERNATIONAL INC.

SK2110

01-14-05



REFER TO THE PARTS LIST SPECIFIC TO
YOUR MODEL FOR MORE DETAIL INFORMATION.

PARTS LIST

November 16, 2009, Rev. H

Grill-Max Roller Grills

MODEL 20 Series

Key Number	Part Number	Number Per Unit	Description & Model Designation
1	A5-RG2028	1	BODY ASSY 20CR/SCR
	A5-RG2027	1	BODY ASSY 20C/SC
2	A5-Z2184	1	DRIP TRAY 20C/SC
3	A5-Z8409	1	BACK-CHAIN RETAINER SPACER 20C/SC
4	A5-Z8410	1	ANGLE CHAIN RETAINER UPPER 20C/SC
5	A5-Z2169	2	SIDE PANEL 20C/SC
6	2N-Z2181	11	ELEMENT 120V 20 20C-120V
6	2N-Z2611	11	ELEMENT 230V 20 20C-230V
7	A5-Z6719	1	CHAIN GUIDE 20C/SC
8	2P-Z2242	1	CHAIN 20C/SC
9	PS-RG2029	11	ROLLER ASSY CHROME 20C
	PS-RG2030	11	ROLLER ASSY POLY 20SC before serial no. xxxx
	PS-RG2049	11	ROLLER ASSY HI-GRIP 20SC after serial no. xxxx
10	2P-Z8392	3	IDLER SPROCKET ALL
11	2A-Z8017	3	BUSHING, IDLER ALL
12	A5-RG2042	1	ARM ASSY- CHAIN TENSIONER ALL
13	2P-Z8074	1	SPRING ALL
14	2P-Z8317	1	MOTOR SPROCKET PM ALL
15	PS-RG5069	1	MOTOR-120 VOLT ALL 120V MODELS
	PS-RG5070	1	MOTOR-230/240 VOLT ALL 230/240V MODELS
16	A5-RG2046	1	MOTOR MOUNTING ASSY 20C/SC
17	A5-RG2036	1	CORD ASSY 120V 20C/SC (120V MODELS EXCEPT CSA)
	2E-Z0512	1	CORD SET EUR 10AMP 20C/SC (230V MODELS)
18	2K-Y2968	1	CORD BUSHING 20C/SC 120V
	2K-Y3240	1	CORD BUSHING 20C/SC 240V
19	2E-Y9227	1	CORD INLET IEC320 10 AMP 20C/SC (230V MODELS)
20	A5-Z5335	1	BOTTOM COVER PLATE ALL
22	A5-Z9344	1	MOUNTING BRACKET 20C/SC
23	2J-Z2192	2	CONTROL 230/240 VOLT 20C/SC
	2J-Z2195	2	CONTROL 120 VOLT 20C/SC
24	2K-Z1971	9	SPACERS 30CE/SCE
25	2E-Z5565-5	1	RIBBON CONNECTOR 30CE/SCE
26	2E-Z5565-3	1	SENSOR FRONT 30CE/SCE
27	2E-Z5565-4	1	SENSOR REAR 30CE/SCE
28	2E-Z5565-2	1	POWER BOARD 30CE/SCE
29	PS-RG3092	1	CONTROL BOARD 30CE/SCE
30	A5-Z7853	1	CONTROL PANEL 20C/SC
	A5-RG2047	1	CONTROL PANEL 20SCE
31	2M-Z8323	1	CONTROL PANEL LABEL 20C
	2M-Z8324	1	CONTROL PANEL LABEL 20SC
	2M-Z9529	1	CONTROL PANEL LABEL 20SCE
32	2J-Z2329	3	PILOT LIGHT RED 20C/SC (120V & 240V MODELS)
	2J-Z3157	3	PILOT LIGHT YELLOW 20C/SC (230V MODELS)
33	2E-Z1858	1	SWITCH-RED LIGHTED 120V & 240V MODELS
	2E-Z3156	1	SWITCH-YELLOW LIGHTED 230V MODELS
34	2R-Z1854	2	KNOB W/SET SCREW 20C/SC
35	A5-Z2509	4	PANEL-INSULATOR 20C/SC
36	2I-Z9865	22	O-RING SILICONE, TUBE SEAL 20C/SC
	2P-Z6455	22	TUBE SEAL, SOLID 20C/SC
37	2I-Z2175	22	O-RING SEAL 20C/SC
38	2P-Z2174	22	TUBE GUIDE 20C/SC
39	2R-Z5846	4	LEGS 20C/SC
40	2K-Z2895	4	ANTI SHORT BUSHING ALL
41	A5-Z7650	1	ELEMENT RETAINER - UPPER 20C/SC
42	A5-Z7656	1	ELEMENT RETAINER - LOWER 20C/SC
58	2P-Z0584	1	TONGS ALL
NOT SHOWN	2E-Z3619	1	WIRE SET-230V MODELS
NOT SHOWN	2E-Z8320	1	WIRE SET-120V MODELS 20C/SC
NOT SHOWN	PS-Z3018	--	TUBE ASSEMBLY SLEEVE

PARTS LIST

November 16, 2009, Rev. H

Grill-Max Roller Grills MODEL **30 Series**

Key Number	Part Number	Number Per Unit	Description & Model Designation
1	A5-RG3062	1	BODY ASSY 30C/SC
	A5-RG3070	1	BODY ASSY 30CBB/SCBB
	A5-RG3087	1	BODY ASSY 30CBBC/SCBBC
	A5-RG3068	1	BODY ASSY 30CF/SCF
	A5-RG3066	1	BODY ASSY 30CR/SCR
	A5-RG3072	1	BODY ASSY 30CRBB/SCRBB
2	A5-Z2185	1	DRIP TRAY 30C/SC
3	A5-Z8409	1	BACK-CHAIN RETAINER SPACER 30C/SC
4	A5-Z8410	1	ANGLE CHAIN RETAINER UPPER 30C/SC
5	A5-Z2169	2	SIDE PANEL 30C/SC
	A5-Z5401	2	SIDE PANEL 30CF/SCF
6	2N-Z2178	11	ELEMENT 120V 30/45 30C/SC-120V
	2N-Z2194	11	ELEMENT 230V 30/45 30C/SC-230V
7	A5-Z6719	1	CHAIN GUIDE 30C/SC
8	2P-Z2242	1	CHAIN 30C/SC
	2P-Z5384	1	CHAIN 30CF/SCF
9	PS-RG3077	11	ROLLER ASSY CHROME 30C
	PS-RG3078	11	ROLLER ASSY POLY 30SC before serial no. C3004650
	PS-RG3078	11	ROLLER ASSY POLY 30SCE before serial no. C3004265
	PS-RG30117	11	ROLLER ASSY HI-GRIP 30SC serial no or after. C3004650
	PS-RG30117	11	ROLLER ASSY HI-GRIP 30SCE serial no or after. C3004650
10	2P-Z8392	3	IDLER SPROCKET ALL
11	2A-Z8017	3	BUSHING, IDLER ALL
12	A5-RG2042	1	ARM ASSY- CHAIN TENSIONER ALL
13	2P-Z8074	1	SPRING ALL
14	2P-Z8317	1	MOTOR SPROCKET PM ALL
15	PS-RG5069	1	MOTOR-120 VOLT ALL 120V MODELS
	PS-RG5070	1	MOTOR-230/240 VOLT ALL 230/240V MODELS
	PS-RG5072	1	MOTOR-120 VOLT FLAT ALL FLAT 120V MODELS
	PS-RG5073	1	MOTOR-230/240 VOLT FLAT ALL FLAT 230/240V MODELS
16	A5-RG2063	1	MOTOR MOUNTING ASSY 30C/SC
	A5-RG5071	1	MOTOR MOUNTING ASSY 30CF/SCF
17	A5-RG2036	1	CORD ASSY 120V 30C/SC (120V MODELS EXCEPT CSA)
	2E-Z0512	1	CORD SET EUR 10AMP 30C/SC (230V MODELS)
18	2K-Y3240	1	CORD BUSHING 30C/SC 240V
	2K-Y2968	1	CORD BUSHING 30C/SC 120V
	2K-Y2968	1	CORD BUSHING 30CSA
19	2E-Y9227	1	CORD INLET IEC320 10 AMP 30C/SC (230V MODELS)
20	A5-Z5335	1	BOTTOM COVER PLATE ALL
21	2P-Z1540	2	HOLE PLUG ALL EXCEPT CLEAR BUNBOX MODELS (CBBC, SCBBC)
22	A5-Z9344	1	MOUNTING BRACKET 30C/SC
	A5-RG4554	1	MOUNTING BRACKET ASSY 30CE/SCE
23	2J-Z2192	2	CONTROL 230/240 VOLT 30C/SC
	2J-Z2195	2	CONTROL 120 VOLT 30C/SC
	PS-RG3091	1	ELECTRONIC CONTROL 120V 30CE/SCE
	A5-Z6002	1	ELECTRONIC CONTROL 230/240V 30CE/SCE
24	2K-Z1971	9	SPACERS 30CE/SCE
25	2E-Z5565-5	1	RIBBON CONNECTOR 30CE/SCE
26	2E-Z5565-3	1	SENSOR FRONT 30CE/SCE
27	2E-Z5565-4	1	SENSOR REAR 30CE/SCE
28	2E-Z5565-2	1	POWER BOARD 30CE/SCE
29	PS-RG3092	1	CONTROL BOARD 30CE/SCE

**IMPORTANT: WHEN ORDERING, SPECIFY VOLTAGE OR TYPE GAS DESIRED
INCLUDE MODEL AND SERIAL NUMBER**

PAGE 1
OF 2

Some items are included for illustrative purposes only and in certain instances may not be available.



PARTS LIST

November 16, 2009, Rev. H

Grill-Max Roller Grills MODEL **30 Series con't**

Key Number	Part Number	Number Per Unit	Description & Model Designation
30	A5-Z7651	1	CONTROL PANEL 30C/SC
	A5-Z7753	1	CONTROL PANEL 30CBB/SCBB
	A5-RG3069	1	CONTROL PANEL 30CE/SCE
	A5-RG3071	1	CONTROL PANEL 30CBBE/SCBBE
31	2M-Z8325	1	CONTROL PANEL LABEL 30C
	2M-Z8326	1	CONTROL PANEL LABEL 30CBB
	2M-Z8328	1	CONTROL PANEL LABEL 30CBBE
	2M-Z8327	1	CONTROL PANEL LABEL 30CE
	2M-Z8329	1	CONTROL PANEL LABEL 30SC
	2M-Z8330	1	CONTROL PANEL LABEL 30SCBB
	2M-Z8331	1	CONTROL PANEL LABEL 30SCBBE
	2M-Z8332	1	CONTROL PANEL LABEL 30SCE
32	2J-Z2329	3	PILOT LIGHT RED 30C/SC (120V & 240V MODELS)
	2J-Z3157	3	PILOT LIGHT YELLOW 30C/SC (230V MODELS)
	2J-Z2329	1	PILOT LIGHT RED 30CE/SCE (120V & 240V MODELS)
	2J-Z3157	1	PILOT LIGHT YELLOW 30CE/SCE (230V MODELS)
33	2E-Z1858	1	SWITCH-RED LIGHTED 120V & 240V MODELS
	2E-Z3156	1	SWITCH-YELLOW LIGHTED 230V MODELS
34	2R-Z1854	2	KNOB W/SET SCREW 30C/SC
35	A5-Z2509	4	PANEL-INSULATOR 30C/SC
36	2I-Z9865	22	O-RING SILICONE, TUBE SEAL 30C/SC serial no. or after C3004650
	2P-Z6455	22	TUBE SEAL, SOLID 30C/SC before serial no. C3004650
	2I-Z9865	22	O-RING SILICONE, TUBE SEAL 30CE/SCE serial no. or after C3004265
	2P-Z6455	22	TUBE SEAL, SOLID 30C/SC before serial no. C3004265
37	2I-Z2175	22	ORING SEAL, TUBE GUIDE 30C/SC
38	2P-Z2174	22	TUBE GUIDE 30C/SC
39	2R-Z5846	4	LEGS 30C/SC
40	2K-Z2895	4	ANTI SHORT BUSHING ALL
41	A5-Z7650	1	ELEMENT RETAINER - UPPER 30C/SC
42	A5-Z7656	1	ELEMENT RETAINER - LOWER 30C/SC
	A5-RG3094	1	ELEMENT RETAINER ASSY - LOW 30CE/SCE
45	2P-Z5098	11	GREASE SEAL 30CDV/SCDV
46	A5-Z5158	1	GRILL DIVIDER 30CDV/SCDV
47	2D-Z5898	1	PAN 2/3 X 4" DEEP 30CBB/SCBB
48	2P-Z0315	4	DRAWER ROLLER W/SCREW ALL BUNBOX (CBB/SCBB) MODELS
49	A5-RG3030	1	DRAWER ASSY 30CBB/SCBB
50	A5-RG3009	1	DRAWER FRONT ASSEMBLY 30CBB/SCBB
51	2M-Z2377	1	DRAWER LABEL 30CBB/SCBB
52	2A-Z4677	1	SHAFT 30CBBC/SCBBC
53	A5-Z4660	1	DOOR BRACKET 30CBBC/SCBBC
54	2C-Z4680	1	RETAINER RING 30CBBC/SCBBC
55	A5-Z4661	1	SPRING MOUNT BRACKET 30CBBC/SCBBC
56	A5-Z4657	1	DOOR ARM 30CBBC/SCBBC
57	2P-Z4683	1	EXTENSION SPRING 30CBBC/SCBBC
58	2P-Z0584	1	TONGS ALL
59	2A-Z4333	2	RETAINER PIN 30CBBC/SCBBC
60	2P-Z4337	1	COMPRESSION SPRING 30CBBC/SCBBC
61	2A-Z4332	2	SHOULDER SCREW 30CBBC/SCBBC
62	A5-RG3037	1	FRONT DOOR 30CBBC/SCBBC
	A5-RG5016	1	FRONT DOOR-GLASS 30CBBC/SCBBC
NOT SHOWN	2E-Z8320	1	WIRE SET 30C/SC (INFINITE CONTROLS)
NOT SHOWN	2E-Z8414	1	WIRE SET 30CE/SCE (ELECTRONIC CONTROLS)
NOT SHOWN	PS-Z3018	--	TUBE ASSEMBLY SLEEVE

**IMPORTANT: WHEN ORDERING, SPECIFY VOLTAGE OR TYPE GAS DESIRED
INCLUDE MODEL AND SERIAL NUMBER**

PAGE 2
OF 2

Some items are included for illustrative purposes only and in certain instances may not be available.



PARTS LIST

November 16, 2009, Rev. H

Grill-Max Roller Grills MODEL **45 Series**

Key Number	Part Number	Number Per Unit	Description & Model Designation
1	A5-RG4533	1	BODY ASSY 45C/SC
	A5-RG4536	1	BODY ASSY 45CBB/SCBB
	A5-RG4534	1	BODY ASSY 45CR/SCR
	A5-RG4537	1	BODY ASSY 45CRBB/SCRBB
2	A5-Z2186	1	DRIP TRAY 45C/SC
3	A5-Z8411	1	BACK-CHAIN RETAINER SPACER 45C/SC
4	A5-Z8412	1	ANGLE CHAIN RETAINER UPPER 45C/SC
5	A5-Z2265	2	SIDE PANEL 45C/SC
	A5-Z5347	2	SIDE PANEL 45CF/SCF
6	2N-Z2178	16	ELEMENT 120V 30/45 45C/SC-120V
	2N-Z2194	16	ELEMENT 230V 30/45 45C/SC-230V
7	A5-Z6615	1	CHAIN GUIDE 45C/SC
8	2P-Z2266	1	CHAIN 45C/SC
	2P-Z5336	1	CHAIN 45CF/SCF
9	PS-RG3077	16	ROLLER ASSY CHROME 45C
	PS-RG30117	16	ROLLER ASSY HI-GRIP 45SC serial no. or after C4501176
	PS-RG3078	16	ROLLER ASSY POLY 45SC serial no. or before C4501175
10	2P-Z8392	3	IDLER SPROCKET ALL
11	2A-Z8017	3	BUSHING, IDLER ALL
12	A5-RG2042	1	ARM ASSY- CHAIN TENSIONER ALL
13	2P-Z8074	1	SPRING ALL
14	2P-Z8317	1	MOTOR SPROCKET PM ALL
15	PS-RG5069	1	MOTOR-120 VOLT ALL 120V MODELS
	PS-RG5070	1	MOTOR-230/240 VOLT ALL 230/240V MODELS
	PS-RG5072	1	MOTOR-120 VOLT FLAT ALL FLAT 120V MODELS
	PS-RG5073	1	MOTOR-230/240 VOLT FLAT ALL FLAT 230/240V MODELS
16	A5-RG2063	1	MOTOR MOUNTING ASSY 45C/SC
	A5-RG5071	1	MOTOR MOUNTING ASSY 45CF/SCF
17	A5-RG2036	1	CORD ASSY 120V 45C/SC (120V MODELS EXCEPT CSA)
	2E-Z0512	1	CORD SET EUR 10AMP 45C/SC (230V MODELS)
	A5-RG2041	1	CORD ASSY 120V 45C/SC (120V CSA MODELS)
18	2K-Y3240	1	CORD BUSHING 45C/SC 240V MODELS
	2K-Y2968	1	CORD BUSHING 45C/SC 120V
	2K-Y2968	1	CORD BUSHING 45CSA
19	2E-Y9227	1	CORD INLET IEC320 10 AMP 45C/SC (230V MODELS)
20	A5-Z5335	1	BOTTOM COVER PLATE ALL
21	2P-Z1540	2	HOLE PLUG ALL EXCEPT CLEAR BUNBOX MODELS (CBBC, SCBBC)
22	A5-Z9344	1	MOUNTING BRACKET 45C/SC
	A5-RG4554	1	MOUNTING BRACKET ASSY 45CE/SCE
23	2J-Z2192	2	CONTROL 230/240 VOLT 45C/SC
	2J-Z2195	2	CONTROL 120 VOLT 45C/SC
	PS-RG3091	1	ELECTRONIC CONTROL 120V 45CE/SCE
	A5-Z6002	1	ELECTRONIC CONTROL 230/240V 45CE/SCE
24	2K-Z1971	9	SPACERS 45CE/SCE
25	2E-Z5565-5	1	RIBBON CONNECTOR 45CE/SCE
26	2E-Z5565-3	1	SENSOR FRONT 45CE/SCE
27	2E-Z5565-4	1	SENSOR REAR 45CE/SCE
28	2E-Z5565-2	1	POWER BOARD 45CE/SCE
29	PS-RG3092	1	CONTROL BOARD 45CE/SCE
30	A5-Z7651	1	CONTROL PANEL 45C/SC
	A5-Z7753	1	CONTROL PANEL ASSY 45CBB/SCBB
	A5-RG3069	1	CONTROL PANEL 45CE/SCE
	A5-RG3071	1	CONTROL PANEL 45CBBE/SCBBE

**IMPORTANT: WHEN ORDERING, SPECIFY VOLTAGE OR TYPE GAS DESIRED
INCLUDE MODEL AND SERIAL NUMBER**

PAGE 1
OF 2

Some items are included for illustrative purposes only and in certain instances may not be available.



PARTS LIST

November 16, 2009, Rev. H

Grill-Max Roller Grills MODEL **45 Series**

Key Number	Part Number	Number Per Unit	Description & Model Designation
31	2M-Z8325	1	CONTROL PANEL LABEL 45C
	2M-Z8326	1	CONTROL PANEL LABEL 45CBB
	2M-Z8327	1	CONTROL PANEL LABEL 45CE
	2M-Z8329	1	CONTROL PANEL LABEL 45SC
	2M-Z8330	1	CONTROL PANEL LABEL 45SCBB
32	2J-Z2329	3	PILOT LIGHT RED 45C/SC (120V & 240V MODELS)
	2J-Z3157	3	PILOT LIGHT YELLOW 45C/SC (230V MODELS)
32	2J-Z2329	1	PILOT LIGHT RED 45CE/SCE (120V & 240V MODELS)
	2J-Z3157	1	PILOT LIGHT YELLOW 45CE/SCE (230V MODELS)
33	2E-Z1858	1	SWITCH-RED LIGHTED 120V & 240V MODELS
	2E-Z3156	1	SWITCH-YELLOW LIGHTED 230V MODELS
34	2R-Z1854	2	KNOB W/SET SCREW 45C/SC
35	A5-Z2510	4	PANEL-INSULATOR 45C/SC
36	2I-Z9865	32	O-RING SILICONE, TUBE SEAL 45C/SC serial no. or after C4501176
	2P-Z6455	32	TUBE SEAL, SOLID 45C/SC serial no. or before C4501175
37	2I-Z2175	32	ORING SEAL 45C/SC
38	2P-Z2174	32	TUBE GUIDE 45C/SC
39	2R-Z5846	4	LEGS 45C/SC
40	2K-Z2895	4	ANTI SHORT BUSHING ALL
41	A5-Z6619	1	ELEMENT RETAINER - UPPER 45C/SC
42	A5-Z6622	1	ELEMENT RETAINER - LOWER 45C/SC
	A5-RG4549	1	ELEMENT RETAINER ASSY - LOW 45CE/SCE
45	2P-Z5098	16	GREASE SEAL 45CDV/SCDV
46	A5-Z5157	1	GRILL DIVIDER 45CDV/SCDV
47	2D-Z5898	1	PAN 2/3 X 4" DEEP 45CBB/SCBB
48	2P-Z0315	4	DRAWER ROLLER W/SCREW ALL BUNBOX (CBB/SCBB) MODELS
49	A5-RG3030	1	DRAWER ASSY 45CBB/SCBB
50	A5-RG3009	1	DRAWER FRONT ASSEMBLY 45CBB/SCBB
51	2M-Z2377	1	DRAWER LABEL 45CBB/SCBB
58	2P-Z0584	1	TONGS ALL
NOT SHOWN	2E-Z8320	1	WIRE SET 45C/SC (INFINITE CONTROLS)
NOT SHOWN	2E-Z8414	1	WIRE SET 45CE/SCE (ELECTRONIC CONTROLS)
NOT SHOWN	PS-Z3018	--	TUBE ASSEMBLY SLEEVE

**IMPORTANT: WHEN ORDERING, SPECIFY VOLTAGE OR TYPE GAS DESIRED
INCLUDE MODEL AND SERIAL NUMBER**

PAGE 2
OF 2

Some items are included for illustrative purposes only and in certain instances may not be available.



PARTS LIST

November 16, 2009, Rev. H

Grill-Max Roller Grills MODEL **50 Series**

Key Number	Part Number	Number Per Unit	Description & Model Designation
1	A5-RG5028	1	BODY ASSY 50 C/SC
	A5-RG5029	1	BODY ASSY 50 CR/SCR
	A5-RG5031	1	BODY ASSY 50CBB/SCBB
	A5-RG5037	1	BODY ASSY 50CBBC/SCBBC
	A5-RG5030	1	BODY ASSY 50CF/50SCF
	A5-RG5032	1	BODY ASSY 50CRBB/SCRBB
2	A5-Z2305	1	DRIP TRAY 50C/SC
2A	A5-Z4273	1	DRIP TRAY 50SC-ST, 50SCE-ST, 50SC-ST
2B	A5-RG5012	1	DRIP TRAY ASSY 50SC-ST, 50SCE-ST, 50SC-ST
3	A5-Z8409	1	BACK-CHAIN RETAINER SPACER 50C/SC
4	A5-Z8410	1	ANGLE CHAIN RETAINER UPPER 50C/SC
5	A5-Z2169	2	SIDE PANEL 50C/SC
	A5-Z5401	2	SIDE PANEL 50CF/SCF
6	2N-Z2179	11	ELEMENT 120V 50 50C/SC-120V
	2N-Z2193	11	ELEMENT 230V 50/75 50C/SC-230V
7	A5-Z6719	1	CHAIN GUIDE 50C/SC
8	2P-Z2242	1	CHAIN 50C/SC
	2P-Z5384	1	CHAIN 50CF/SCF
9	PS-RG7562	11	ROLLER ASSY CHROME 50C
	PS-RG7595	11	ROLLER ASSY HI-GRIP 50SC serial no. or after C5003478
	PS-RG7563	11	ROLLER ASSY POLY 50SC serial no. or before C5003477
10	2P-Z8392	3	IDLER SPROCKET ALL
11	2A-Z8017	3	BUSHING, IDLER ALL
12	A5-RG2042	1	ARM ASSY- CHAIN TENSIONER ALL
13	2P-Z8074	1	SPRING ALL
14	2P-Z8317	1	MOTOR SPROCKET PM ALL
15	PS-RG5069	1	MOTOR-120 VOLT ALL 120V MODELS
	PS-RG5070	1	MOTOR-230/240 VOLT ALL 230/240V MODELS
	PS-RG5072	1	MOTOR-120 VOLT FLAT ALL FLAT 120V MODELS
	PS-RG5073	1	MOTOR-230/240 VOLT FLAT ALL FLAT 230/240V MODELS
16	A5-RG2063	1	MOTOR MOUNTING ASSY 50C/SC
	A5-RG5071	1	MOTOR MOUNTING ASSY 50CF/SCF
17	A5-RG2036	1	CORD ASSY 120V 50C/SC (120V MODELS EXCEPT CSA)
	2E-Z0512	1	CORD SET EUR 10AMP 50C/SC (230V MODELS)
18	2K-Y3240	1	CORD BUSHING 50C/SC 240V
	2K-Y2968	1	CORD BUSHING 50C/SC 120V
	2K-Y2968	1	CORD BUSHING 50CSA
19	2E-Y9227	1	CORD INLET IEC320 10 AMP 50C/SC (230V MODELS)
20	A5-Z5335	1	BOTTOM COVER PLATE ALL
21	2P-Z1540	2	HOLE PLUG ALL EXCEPT CLEAR BUNBOX MODELS (CBBC, SCBBC)
22	A5-Z9344	1	MOUNTING BRACKET 50C/SC
	A5-RG4554	1	MOUNTING BRACKET ASSY 50CE/SC
23	2J-Z2192	2	CONTROL 230/240 VOLT 50C/SC
	2J-Z2195	2	CONTROL 120 VOLT 50C/SC
	PS-RG3091	1	ELECTRONIC CONTROL 120V 50CE/SCE
	A5-Z6002	1	ELECTRONIC CONTROL 230/240V 50CE/SCE
24	2K-Z1971	9	SPACERS 50CE/SCE
25	2E-Z5565-5	1	RIBBON CONNECTOR 50CE/SCE
26	2E-Z5565-3	1	SENSOR FRONT 50CE/SCE
27	2E-Z5565-4	1	SENSOR REAR 50CE/SCE
28	2E-Z5565-2	1	POWER BOARD 50CE/SCE
29	PS-RG3092	1	CONTROL BOARD 50CE/SCE

**IMPORTANT: WHEN ORDERING, SPECIFY VOLTAGE OR TYPE GAS DESIRED
INCLUDE MODEL AND SERIAL NUMBER**

PAGE 1
OF 2

Some items are included for illustrative purposes only and in certain instances may not be available.



PARTS LIST

November 16, 2009, Rev. H

Grill-Max Roller Grills MODEL **50 Series**

Key Number	Part Number	Number Per Unit	Description & Model Designation
30	A5-Z7751	1	CONTROL PANEL 50C/SC
	A5-Z7850	1	CONTROL PANEL ASSY 50CBB/SCBB
	A5-RG7560	1	CONTROL PANEL 50CBBE/SCBBE
	A5-RG7561	1	CONTROL PANEL 50CE/SCE
31	2M-Z8333	1	CONTROL PANEL LABEL 50C
	2M-Z8334	1	CONTROL PANEL LABEL 50CBB
	2M-Z8336	1	CONTROL PANEL LABEL 50CBBE
	2M-Z8335	1	CONTROL PANEL LABEL 50CE
	2M-Z8337	1	CONTROL PANEL LABEL 50SC
	2M-Z8338	1	CONTROL PANEL LABEL 50SCBB
	2M-Z8340	1	CONTROL PANEL LABEL 50SCBBE
	2M-Z8339	1	CONTROL PANEL LABEL 50SCE
32	2J-Z2329	3	PILOT LIGHT RED 50C/SC (120V & 240V MODELS)
	2J-Z3157	3	PILOT LIGHT YELLOW 50C/SC (230V MODELS)
	2J-Z2329	1	PILOT LIGHT RED 50CE/SC (120V & 240V MODELS)
	2J-Z3157	1	PILOT LIGHT YELLOW 50CE/SC (230V MODELS)
33	2E-Z1858	1	SWITCH-RED LIGHTED 120V & 240V MODELS
	2E-Z3156	1	SWITCH-YELLOW LIGHTED 230V MODELS
34	2R-Z1854	2	KNOB W/SET SCREW 50C/SC
35	A5-Z2509	4	PANEL-INSULATOR 50C/SC
36	2I-Z9865	22	O-RING SILICONE, TUBE SEAL 50C/SC serial no. or after C5003478
	2P-Z6455	22	TUBE SEAL, SOLID 50C/SC serial no. or before C5003477
37	2I-Z2175	22	ORING SEAL 50C/SC
38	2P-Z2174	22	TUBE GUIDE 50C/SC
39	2R-Z5846	4	LEGS 50C/SC
40	2K-Z2895	4	ANTI SHORT BUSHING ALL
41	A5-Z7650	1	ELEMENT RETAINER - UPPER 50C/SC
42	A5-RG3094	1	ELEMENT RETAINER - ASSY 50CE/SCE
	A5-Z7656	1	ELEMENT RETAINER - LOWER 50C/SC
45	2P-Z5098	11	GREASE SEAL 50CDV/SCDV
46	A5-Z5158	1	GRILL DIVIDER 50CDV/SCDV
47	2D-Z5899	1	PAN FULL X 4" DEEP 50CBB/SCBB
48	2P-Z0315	4	DRAWER ROLLER W/SCREW ALL BUNBOX (CBB/SCBB) MODELS
49	A5-RG5011	1	DRAWER ASSY 50CBB/SCBB
50	A5-RG5004	1	DRAWER FRONT ASSEMBLY 50CBB/SCBB
51	2M-Z2380	1	DRAWER LABEL 50CBB/SCBB
52	2A-Z4677	1	SHAFT 50CBBC/SCBBC
53	A5-Z4660	1	DOOR BRACKET 50CBBC/SCBBC
54	2C-Z4680	1	RETAINER RING 50CBBC/SCBBC
55	A5-Z4661	1	SPRING MOUNT BRACKET 50CBBC/SCBBC
56	A5-Z4657	1	DOOR ARM 50CBBC/SCBBC
57	2P-Z4683	1	EXTENSION SPRING 50CBBC/SCBBC
58	2P-Z0584	1	TONGS ALL
59	2A-Z4333	2	RETAINER PIN 50CBBC/SCBBC
60	2P-Z4337	1	COMPRESSION SPRING 50CBBC/SCBBC
61	2A-Z4332	2	SHOULDER SCREW 50CBBC/SCBBC
62	A5-RG5016	1	FRONT DOOR-GLASS 50CBBC/SCBBC
NOT SHOWN	2E-Z8320	1	WIRE SET 50C/SC (INFINITE CONTROLS)
NOT SHOWN	2E-Z8414	1	WIRE SET 50CE/SCE (ELECTRONIC CONTROLS)
NOT SHOWN	PS-Z3018	--	TUBE ASSEMBLY SLEEVE

**IMPORTANT: WHEN ORDERING, SPECIFY VOLTAGE OR TYPE GAS DESIRED
INCLUDE MODEL AND SERIAL NUMBER**

PAGE 2
OF 2

Some items are included for illustrative purposes only and in certain instances may not be available.



PARTS LIST

December 17, 2010, Rev. H

Grill-Max Roller Grills

MODEL **75 Series**

Key Number	Part Number	Number Per Unit	Description & Model Designation
1	A5-RG7545	1	BODY ASSY 75 C/SC
	A5-RG7546	1	BODY ASSY 75 CR/SCR
	A5-RG7547	1	BODY ASSY 75CF/SCF
	A5-RG7548	1	BODY ASSY 75CBB/SCBB
	A5-RG7549	1	BODY ASSY 75CRBB/SCRBB
	A5-RG7571	1	BODY ASSY 75CFV
	A5-RG7580	1	BODY ASSY 75 RG/HD 75SCESW
2	A5-Z2306	1	DRIP TRAY 75C/SC
3	A5-Z8411	1	BACK-CHAIN RETAINER SPACER 75C/SC
4	A5-Z8412	1	ANGLE CHAIN RETAINER UPPER 75C/SC
5	A5-Z2265	2	SIDE PANEL 75C/SC
	A5-Z5347	2	SIDE PANEL 75CF/SCF
6	2N-Z2193	16	ELEMENT 230V 50/75 75C/SC-230V
	2N-Z2982	16	ELEMENT 120V 105 W 75C/SC-120V
7	A5-Z6615	1	CHAIN GUIDE 75C/SC
8	2P-Z2266	1	CHAIN 75C/SC
	2P-Z5336	1	CHAIN 75CF/SCF
9	A5-RG5057	16	ROLLER ASSY HIGRIP 50S/75S 75SCE
	PS-RG7562	16	ROLLER ASSY CHROME 75C
	PS-RG7563	16	ROLLER ASSY POLY 75SC
10	2A-Z6614	3	IDLER ALL
11	2A-Z8017	3	BUSHING, IDLER ALL
12	2K-Z2895	3	ANTI SHORT BUSHING ALL
	A5-RG2042	1	ARM ASSY- CHAIN TENSIONER ALL
13	2P-Z8074	1	SPRING ALL
14	2P-Z2538	1	MOTOR SPROCKET ALL
15	2U-Z6485	1	MOTOR-120 VOLT ALL 120V MODELS
	2U-Z6487	1	MOTOR-230/240 VOLT ALL 230/240V MODELS
16	2R-Y5092	4	LEGS 4" 75C/SC
	A5-RG2035	1	MOTOR MOUNTING ASSY 75C/SC
	A5-RG5040	1	MOTOR MOUNTING ASSY 75CF/SCF
17	2E-Y9251	1	CORD SET EUR 16 AMP 75C/SC (230V MODELS)
	A5-RG2034	1	CORD SER 240V W/TERMINALS 75C/SC (240V MODELS)
	A5-RG2041	1	CORD ASSY 120V 75C/SC (120V MODELS)
18	2K-Y3240	1	CORD BUSHING 75C/SC (120V & 240V MODELS)
19	2E-Y9253	1	CORD INLET IEC320 16 AMP 75C/SC (230V MODELS)
20	A5-Z5335	1	BOTTOM COVER PLATE ALL
21	2P-Z1540	2	HOLE PLUG ALL EXCEPT CLEAR BUNBOX MODELS (CBBC, SCBBC)
22	A5-RG7544	1	MOUNTING BRACKET ASSY 75CE/SCE
	A5-Z7664	1	MOUNTING BRACKET 75C/SC
23	2J-Z2192	2	CONTROL 230/240 VOLT 75C/SC
	2J-Z2195	2	CONTROL 120 VOLT 75C/SC
	A5-Z6002	1	ELECTRONIC CONTROL 230/240V 75CE/SCE
	PS-RG3091	1	ELECTRONIC CONTROL 120V 75C/SC
24	2K-Z1971	9	SPACERS 75CE/SCE
25	2E-Z5565-5	1	RIBBON CONNECTOR 75C/SC
26	2E-Z5565-3	1	SENSOR FRONT 75C/SC
27	2E-Z5565-4	1	SENSOR REAR 75C/SC
28	2E-Z5565-2	1	POWER BOARD 75C/SC
29	PS-RG3092	1	CONTROL BOARD 75C/SC

**IMPORTANT: WHEN ORDERING, SPECIFY VOLTAGE OR TYPE GAS DESIRED
INCLUDE MODEL AND SERIAL NUMBER**

PAGE 1
OF 2

Some items are included for illustrative purposes only and in certain instances may not be available.



PARTS LIST

December 17, 2010, Rev. H

Grill-Max Roller Grills

MODEL **75 Series**

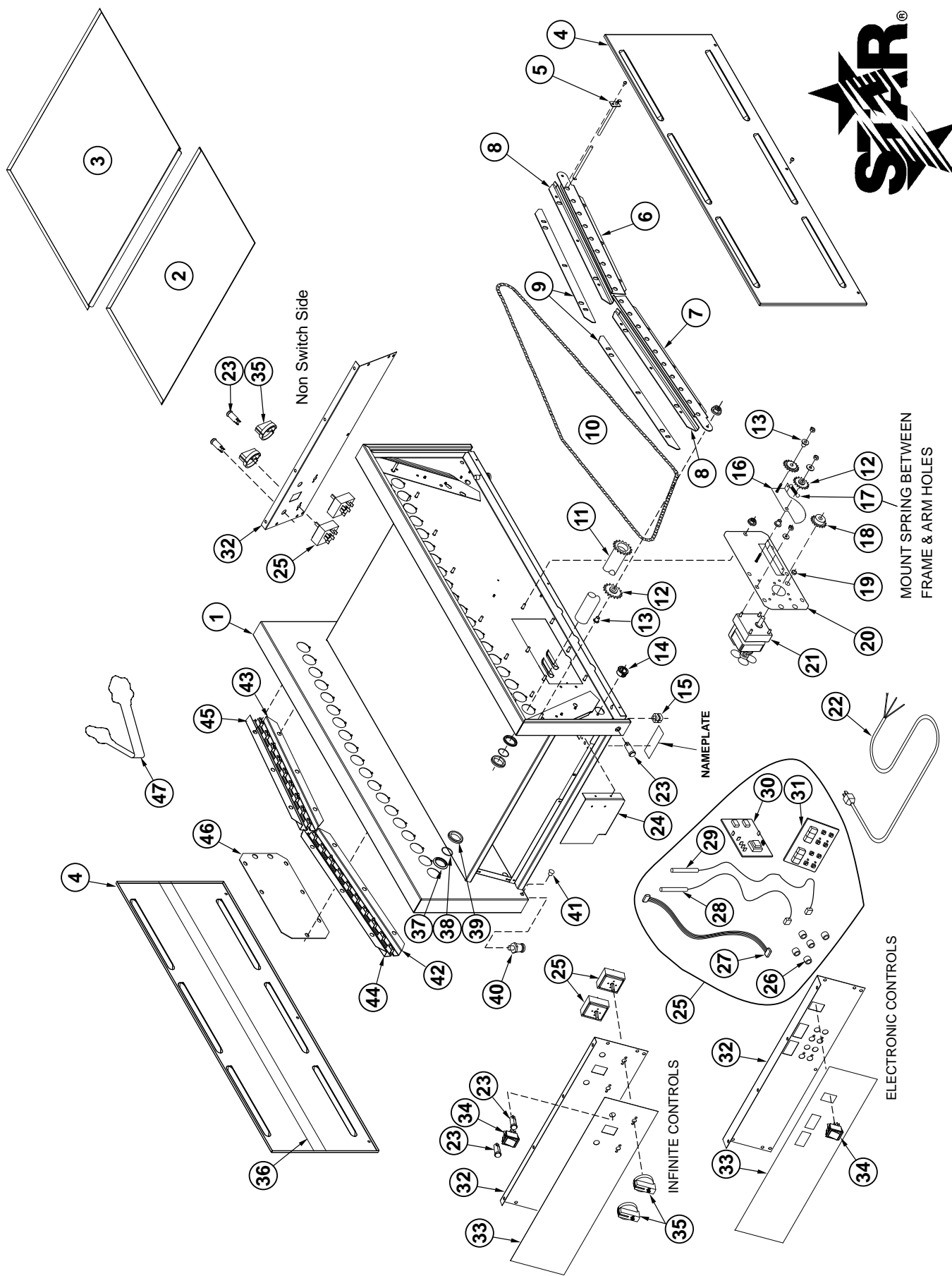
Key Number	Part Number	Number Per Unit	Description & Model Designation
30	A5-RG7560	1	CONTROL PANEL 75CE/SCE
	A5-RG7561	1	CONTROL PANEL 75CE/SCE, BUN BOX
	A5-Z7751	1	CONTROL PANEL 75C/SC
	A5-Z7850	1	CONTROL PANEL ASSY 75CBB/SCBB
31	2M-Z8333	1	CONTROL PANEL LABEL 75C
	2M-Z8334	1	CONTROL PANEL LABEL 75CBB
	2M-Z8335	1	CONTROL PANEL LABEL 75CE
	2M-Z8336	1	CONTROL PANEL LABEL 75CBBE
	2M-Z8337	1	CONTROL PANEL LABEL 75SC
	2M-Z8338	1	CONTROL PANEL LABEL 75SCBB
	2M-Z8339	1	CONTROL PANEL LABEL 75SCE
	2M-Z8340	1	CONTROL PANEL LABEL 75SCBBE
32	2J-Z2329	1	PILOT LIGHT RED 75CE/SCE (120V & 240V MODELS)
	2J-Z2329	3	PILOT LIGHT RED 75C/SC (120V & 240V MODELS)
	2J-Z3157	1	PILOT LIGHT YELLOW 75CE/SCE (230V MODELS)
	2J-Z3157	3	PILOT LIGHT YELLOW 75C/SC (230V MODELS)
33	2E-Z1858	1	SWITCH-RED LIGHTED 120V & 240V MODELS
	2E-Z3156	1	SWITCH-YELLOW LIGHTED 230V MODELS
34	2R-Z1854	2	KNOB W/SET SCREW 75C/SC
35	A5-Z2510	4	PANEL-INSULATOR 75C/SC
36	2P-Z6455	32	TUBE SEAL, SOLID 75C/SC
37	2I-Z2175	32	ORING SEAL 75C/SC
38	2P-Z2174	32	TUBE GUIDE 75C/SC
39	A5-Z6619	1	ELEMENT RETAINER - UPPER 75C/SC
40	A5-RG4549	1	ELEMENT RETAINER ASSY - LOW 75CE/SCE
	A5-Z6622	1	ELEMENT RETAINER - LOWER 75C/SC
43	2P-Y9176	2	SNAP BUTTON 75SCF-SA, 75SCFE-SA
44	A5-RG7516	1	CONTROL PANEL COVER 75SCF-SA, 75SCFE-SA, 75SCESW
45	2P-Z5098	16	GREASE SEAL 75CDV/SCDV
46	A5-Z5157	1	GRILL DIVIDER 75CDV/SCDV
47	2D-Z5899	1	PAN FULL X 4" DEEP 75CBB/SCBB
48	2P-Z0315	4	DRAWER ROLLER W/SCREW ALL BUNBOX (CBB/SCBB) MODELS
49	A5-RG5011	1	DRAWER ASSY 75CBB/SCBB
50	A5-RG5004	1	DRAWER FRONT ASSEMBLY 75CBB/SCBB
51	2M-Z2380	1	DRAWER LABEL 75CBB/SCBB
58	2P-Z0584	1	TONGS ALL
NOT SHOWN	2E-Z8320	1	WIRE SET 75C/SC (INFINITE CONTROLS)
NOT SHOWN	2E-Z8414	1	WIRE SET 75CE/SCE (ELECTRONIC CONTROLS)
NOT SHOWN	PS-RG7599	AR	CHAIN REPAIR KIT 75 FLAT FLAT ROLLER CHAIN REP SER. KIT

**IMPORTANT: WHEN ORDERING, SPECIFY VOLTAGE OR TYPE GAS DESIRED
INCLUDE MODEL AND SERIAL NUMBER**

PAGE 2
OF 2

Some items are included for illustrative purposes only and in certain instances may not be available.





PARTS LIST

September 23, 2008 Rev. H

Grill-Max Island Roller Grills MODEL **54IC Series**

Key Number	Part Number	Number Per Unit	Description & Model Designation
1	A5-RG3098	1	BODY ASSY 54IC/ISC
2	A5-Z5185	1	DRIP TRAY
3	A5-RG30105	1	DRIP PAN ASSY 54IC/ISC
4	A5-Z8803	2	SIDE PANEL IC/ISC
5	A5-Z9705	19	ELEMENT 90W 120V 54IC/ISC
6	A5-Z8811	1	CHAIN GUIDE 2
7	A5-Z8810	1	CHAIN GUIDE 1
8	A5-Z8826	2	CHAIN RETAINER-ANGLE
9	A5-Z8827	2	CHAIN RETAINER-FLAT
10	2P-Z8915	1	ROLLER CHAIN
11	A5-RG3001	19	ROLLER ASSY CHROME 54IC
	A5-RG3002	19	ROLLER ASSY POLY 54ISC
12	2P-Z8392	4	IDLER SPROCKET ASSY
13	2A-Z8017	4	BUSHING IDLER
14	2K-8043	1	BUSHING HEYCO
15	2K-Y3240	1	BUSHING SR 17-2 ICE/ISCE
16	A5-RG2042	1	ARM ASSY-CHAIN TENSIONER
17	2P-Z8074	1	EXTENSION SPRING
18	2P-Z8317	1	MOTOR SPROCKET
19	2K-Z2895	3	BUSHING IC/ISC
	2K-Z2895	4	BUSHING ICE/ISCE
20	A5-RG2046	1	MOTOR MOUNTING ASSY
21	2U-Z6485	1	GEAR MOTOR, 120V
22	A5-RG2036	1	CORD SET 120V W/TERMINALS
23	2J-Z2329	5	PILOT LIGHT IC/ISC
	2J-Z2329	2	PILOT LIGHT ICE/ISCE
24	A5-RG4554	2	INSIDE MOUNTING ASSY ICE/ISCE
	A5-Z9344	2	INSIDE MOUNTING BRACKET 54IC/ISC
25	2J-Z2195	4	INFINITE CONTROLS 120V IC/ISC
26	2K-Z1971	18	SPACER ICE/ISCE
27	2E-Z5565-5	2	RIBBON CONNECTOR ICE/ISCE
28	2E-Z5565-3	2	SENSOR FRONT ICE/ISCE
29	2E-Z5565-4	2	SENSOR REAR ICE/ISCE
30	2E-Z5565-2	2	POWER BOARD ICE/ISCE
31	PS-RG3092	2	CONTROL BOARD ICE/ISCE
32	A5-RG3069	1	CONTROL PANEL ICE/ISCE
	A5-Z7651	2	CONTROL PANEL 54IC/ISC
33	2M-Z8325	1	LABEL-CNTRL PNL-SWITCH SIDE 54IC
	2M-Z8327	1	LABEL-CNTRL PNL-SWITCH SIDE 54ICE
	2M-Z8329	1	LABEL-CONTROL PANEL-SWITCH SIDE 54ISC
	2M-Z8332	1	LABEL-CNTRL PNL-SWITCH SIDE 54ISCE
	2M-Z8916	1	LABEL 2 CNTRL PNL-NON SWITCH SIDE 54ISC
	2M-Z9723	1	CONTROL PNL LABEL-NON SWITCH SIDE 54IC/ISC
	2M-Z9724	1	CONTROL PNL LABEL-NON SWITCH SIDE 54ICE/ISCE
	2M-Z9725	1	CNTRL PNL LABEL 2 - NON SWITCH SIDE 54ISCE
34	2E-Z1858	1	SWITCH-LIGHTED
35	2R-Z1854	4	KNOB-CONTROL IC/ISC
36	A5-Z2509	4	PANEL INSULATOR
37	2P-Z6455	38	TUBE SEAL, SOLID
38	2I-Z2175	38	O-RING SEAL
39	2P-Z2174	38	TUBE GUIDE
40	2R-Z5846	4	FOOT-ROLLER GRILLS 54IC/ISC

**IMPORTANT: WHEN ORDERING, SPECIFY VOLTAGE OR TYPE GAS DESIRED
INCLUDE MODEL AND SERIAL NUMBER**

PAGE 1
OF 2

Some items are included for illustrative purposes only and in certain instances may not be available.



PARTS LIST

September 23, 2008 Rev. H

Grill-Max Island Roller Grills
MODEL **54IC Series**

Key Number	Part Number	Number Per Unit	Description & Model Designation
41	2P-Z1540	5	PLUG-HEYCO 5/16" DIA. IC/ISC
	2P-Z1540	4	PLUG-HEYCO 5/16" DIA. ICE/ISCE
42	A5-RG30115	1	ELEMENT RETAINER ASSY LOWER 1 ICE/ISCE
	A5-Z8808	1	ELEMENT RETAINER-LOWER 1 IC/ISC
43	A5-RG30116	1	ELEMENT RETAINER ASSY LOWER 2 ICE/ISCE
	A5-Z8809	1	ELEMENT RETAINER-LOWER 2 IC/ISC
44	A5-Z8828	1	ELEMENT RETAINER-UPPER 1
45	A5-Z8829	1	ELEMENT RETAINER-UPPER 2
46	A5-Z8833	1	COVER PLATE
47	2P-Z0584	1	TONGS-PLASTIC
NI	2E-Z8912	1	WIRE SET IC/ISC
NI	2E-Z9789	1	WIRE KIT ICE/ISCE

IMPORTANT: WHEN ORDERING, SPECIFY VOLTAGE OR TYPE GAS DESIRED
INCLUDE MODEL AND SERIAL NUMBER

PAGE 2
OF 2

Some items are included for illustrative purposes only and in certain instances may not be available.



Star Manufacturing International, Inc.

PARTS LIST

September 23, 2008 Rev. H

Grill-Max Island Roller Grills MODEL **90IC/ISC Series**

Key Number	Part Number	Number Per Unit	Description & Model Designation
1	A5-RG7575	1	BODY ASSY 90IC/ISC
2	A5-Z9828	1	DRIP TRAY 90IC/ISC
3	A5-RG7576	1	DRIP PAN ASSY 90IC/ISC
4	A5-Z8803	2	SIDE PANEL IC/ISC
5	2N-Z2193	19	ELEMENT 135W, 230V 90IC/ISC
6	A5-Z8811	1	CHAIN GUIDE 2
7	A5-Z8810	1	CHAIN GUIDE 1
8	A5-Z8826	2	CHAIN RETAINER-ANGLE
9	A5-Z8827	2	CHAIN RETAINER-FLAT
10	2P-Z8915	1	ROLLER CHAIN
11	A5-RG7501	19	ROLLER ASSY CHROME 90IC
	A5-RG7502	19	ROLLER ASSY POLY 90ISC
12	2P-Z8392	4	IDLER SPROCKET ASSY
13	2A-Z8017	4	BUSHING IDLER
14	2K-8043	1	BUSHING HEYCO
15	2K-Y3240	1	BUSHING SR 17-2 ICE/ISCE
16	A5-RG2042	1	ARM ASSY-CHAIN TENSIONER
17	2P-Z8074	1	EXTENSION SPRING
18	2P-Z8317	1	MOTOR SPROCKET
19	2K-Z2895	8	BUSHING 90IC/ISC
19	2K-Z2895	4	BUSHING ICE/ISCE
20	A5-RG2046	1	MOTOR MOUNTING ASSY
21	2U-Z6487	1	GEAR MOTOR, 240V
22	A5-RG2034	1	CORD SET 240V W/TERMINALS 90ICE
	A5-RG7579	1	CORD W/TERMINALS 240V, 6-15P 90IC
23	2J-Z2329	6	PILOT LIGHT IC/ISC
	2J-Z2329	2	PILOT LIGHT ICE/ISCE
24	A5-RG4554	2	INSIDE MOUNTING ASSY ICE/ISCE
	A5-Z7664	2	INSIDE MOUNTING BRACKET 90IC/ISC
25	2J-Z2192	4	INFINITE CONTROLS 240V IC/ISC
26	2K-Z1971	18	SPACER ICE/ISCE
27	2E-Z5565-5	2	RIBBON CONNECTOR ICE/ISCE
28	2E-Z5565-3	2	SENSOR FRONT ICE/ISCE
29	2E-Z5565-4	2	SENSOR REAR ICE/ISCE
30	2E-Z5565-2	2	POWER BOARD ICE/ISCE
31	PS-RG3092	2	CONTROL BOARD ICE/ISCE
32	A5-RG7560	1	CONTROL PANEL 90ICE/ISCE
	A5-Z7751	2	CONTROL PANEL 90IC/ISC
33	2M-Z8333	1	LABEL-CONTROL PNL-SWITCH SIDE 90IC
	2M-Z8335	1	LABEL-CONTROL PANEL-SWITCH SIDE 90ICE
	2M-Z8337	1	LABEL-CNTRL PNL-SWITCH SIDE 90ISC
	2M-Z8339	1	LABEL-CNTRL PNL-SWITCH SIDE 90ISCE
	2M-Z8938	1	LABEL-CNTRL PNL-NON-SWITCH SIDE 90ISC
	2M-Z9727	1	CONTROL PNL LABEL-NON SWITCH SIDE 90ICE
	2M-Z9727	1	CONTROL PNL LABEL-NON SWITCH SIDE 90IC
	2M-Z9728	1	LABEL-CNTRL PNL-NON-SWITCH SIDE 90ISCE
34	2E-Z1858	1	SWITCH-LIGHTED
35	2R-Z1854	4	KNOB-CONTROL ICE/ISC
36	A5-Z2509	4	PANEL INSULATOR
37	2P-Z2174	38	TUBE GUIDE
38	2I-Z2175	38	O-RING SEAL
39	2P-Z6455	38	TUBE SEAL, SOLID

**IMPORTANT: WHEN ORDERING, SPECIFY VOLTAGE OR TYPE GAS DESIRED
INCLUDE MODEL AND SERIAL NUMBER**

PAGE 1
OF 2

Some items are included for illustrative purposes only and in certain instances may not be available.



Star Manufacturing International, Inc.

PARTS LIST

September 23, 2008 Rev. H

Grill-Max Island Roller Grills
MODEL **90IC/ISC Series**

Key Number	Part Number	Number Per Unit	Description & Model Designation
40	2R-Y5092	4	BLACK PLASTIC LEG 90IC/ISC
41	2P-Z1540	5	PLUG-HEYCO 5/16" DIA. IC/ISC
	2P-Z1540	4	PLUG-HEYCO 5/16" DIA. ICE/ISCE
42	A5-RG30115	1	ELEMENT RETAINER ASSY LOWER 1 ICE/ISCE
	A5-Z8808	1	ELEMENT RETAINER-LOWER 1 IC/ISC
43	A5-RG30116	1	ELEMENT RETAINER ASSY LOWER 2 ICE/ISCE
	A5-Z8809	1	ELEMENT RETAINER-LOWER 2 IC/ISC
44	A5-Z8828	1	ELEMENT RETAINER-UPPER 1
45	A5-Z8829	1	ELEMENT RETAINER-UPPER 2
46	A5-Z8833	1	COVER PLATE
47	2P-Z0584	1	TONGS-PLASTIC
NI	2E-Z8912	1	WIRE SET 90IC/ISC
NI	2E-Z9789	1	WIRE SET 90ICE/ISCE

IMPORTANT: WHEN ORDERING, SPECIFY VOLTAGE OR TYPE GAS DESIRED
INCLUDE MODEL AND SERIAL NUMBER

PAGE 2
OF 2

Some items are included for illustrative purposes only and in certain instances may not be available.



STAR INTERNATIONAL HOLDINGS INC. COMPANY
Star - Holman - Lang - Wells - Bloomfield - Toastmaster
10 Sunnen Drive, St. Louis, MO 63143 U.S.A.
(800) 807-9054 (314) 781-2777
Parts & Service (800) 807-9054
www.star-mfg.com