

Pro-Max[®]

SPLIT LID TABLE TOP TWO SIDED GRILL

MODEL
GR14SPTA-UK

Installation and Operation Instructions

2M-Z7273 Rev.F 11/18/09



GR14SPTA



SAFETY SYMBOL



These symbols are intended to alert the user to the presence of important operating and maintenance instructions in the manual accompanying the appliance.

RETAIN THIS MANUAL FOR FUTURE REFERENCE

NOTICE

Using any part other than genuine Star factory supplied parts relieves the manufacturer of all liability.

Star reserves the right to change specifications and product design without notice. Such revisions do not entitle the buyer to corresponding changes, improvements, additions or replacements for previously purchased equipment.

Due to periodic changes in designs, methods, procedures, policies and regulations, the specifications contained in this sheet are subject to change without notice. While Star Manufacturing exercises good faith efforts to provide information that is accurate, we are not responsible for errors or omissions in information provided or conclusions reached as a result of using the specifications. By using the information provided, the user assumes all risks in connection with such use.

MAINTENANCE AND REPAIRS

Contact your local dealer for service or required maintenance. Please record the model number, serial number, voltage and purchase date in the area below and have it ready when you call to ensure a faster service.

Model No. _____

Serial No. _____

Voltage _____

Purchase Date _____

GENERAL INSTALLATION DATA



CAUTION

This equipment is designed and sold for commercial use only by personnel trained and experienced in its operation and is not sold for consumer use in and around the home nor for use directly by the general public in food service locations.

INSTALLATION

1. Plug the unit into a dedicated 230 VAC line with United Kingdom BS 1363A receptacle.
2. **DO NOT** plug into a 120V line. Doing so will damage the unit and void the warranty.
3. Each machine has been properly wired and inspected at the factory for operation on the voltage and type of current specified on the nameplate.
4. IEC Plug & Cord are NOT included with this unit.



WARNING

DO NOT CONNECT TO ANY TYPE OF CURRENT OTHER THAN 230 VAC OR THE MACHINE WILL BE SERIOUSLY DAMAGED.

INITIAL START UP

Before using the unit for the first time, clean and heat for approximately 45 minutes.

PRESET TIMES AND TEMPERATURES

If adjustments are required, please refer to the time or temperature programming section in this manual.

°F/°C CONVERSION

To change the temperature display from °F to °C or from °C to °F, hold the TEMP button while the unit is turned off. While holding the TEMP button, turn the unit on. The display will be the changed temperature mode. To change back, repeat the procedure.

OPERATING INSTRUCTIONS

1. Turn the unit on by placing the switch in the ON position. The HEAT ON indicator, program number and display will flash indicating the unit is heating. When the preset temperature is reached, the heating light, display and program light indicator will stop flashing followed by 3 beeps. (Initial startup heating time is approximately 30 minutes).
2. Place product on the bottom cooking surface of the unit and close the lids.
3. Press the PROGRAM button and let the displayed time count down to "0" at which time the unit will beep. To turn off the beeper, press the PROGRAM button again.
4. Raise the lid until it engages into the first detent and remove food. Using a spatula, scrape residue into the grease catcher tray.

NOTE: Metal utensils may be used, however, using nonmetal utensils will prolong the life of the cooking surface.

5. Turn the unit off when it is not in use.

TEMPERATURE/TIMER CONTROLLER OPERATION SPECIFICATIONS

Startup:

1. The preset time will flash until the preset temperature is reached.
2. When the control reaches the preset temperature, time display, the HEAT ON indicator and program indicator will stop flashing and the alarm will beep three times.

Temperature:

1. To view the actual temperature, press and hold the TEMP button. The display will read "Lo" if the temperature is below 273°F (135°C) and "Hi" if the temperature is above 573°F (300°C).

To Program Time and Temperature:

1. Press and hold **TEMP** (actual temperature displays).
2. While holding **TEMP**, press and hold any program button on the left for one second. The LED above the program number will light and the display will read " _ _ _ _ ". Enter the four-digit security code sequence: **4, 3, 2, 1**. The security code will not show on the display. Once the correct sequence has been entered, the preset time will be displayed and the LED for that program will begin to flash.
3. Set the time with the "+" or "-" buttons.
4. Press the **TEMP** button to save the time.
5. The preset temperature will now be displayed.
6. Set the desired temperature for this program using the "**+ or -**" buttons.
7. Press the **TEMP** button to save the temperature and to exit the programming mode for this program. The LED will stop flashing but will remain lit.
8. Press any other program button within 15 seconds to continue programming without re-entering the security code.
9. While programming a program (LED is flashing), if no input is received for 15 seconds the unit will revert to normal operation and the security code must be re-entered.

NOTE: Temperature settings are done with the Left side buttons only. The time settings programmed on the left buttons will also be programmed onto the **Right side**. See the next section to make time changes to the **Right side** only.

Each programming change must be saved by pressing the TEMP button!

Right Side (Timer only):

1. To change the time on right, press and hold the **TEMP** button, then press and hold any program button on the right for one second. The LED above the program button will light and the right display will read " _ _ _ _ ". Enter the four-digit security code sequence: **4, 3, 2, 1**. The security code **will not** show on display. Once the correct sequence has been entered, the preset time will be displayed and the LED for that program will begin to flash.
2. Set the time with the "**+ or -**" buttons.
3. Press the **TEMP** button to save the time.
4. The LED will stop flashing but will remain lit.
5. Press any other program button within 15 seconds to continue programming without re-entering the security code.
6. While programming a program (LED is flashing), if no input is received for 15 seconds the unit will revert to normal operation and the security code must be re-entered.

Operation:

1. Pressing any program button (1-4) will start the timer countdown and display the remaining preset time. The LED for the appropriate program will be lit during the countdown and will remain lit until another program is selected.
2. When the display reaches "00:00", the buzzer will sound and the digits will flash.
3. Press the program button to silence the buzzer and return the readout to programmed time.
4. The right and left sides will operate independently of each other. Both timers can be in operation at the same time. The "00:00" display will show which side is timed out.

MONTHLY INSPECTION

Check all bolts/screws and tighten if necessary.

CLEANING

All surfaces except the cooking grids are stainless steel and can be cleaned with a warm, damp cloth and detergent.



CAUTION

DO NOT IMMERSE OR LET THE UNIT STAND IN WATER. DO NOT HOSE DOWN THE UNIT. KEEP THE UNIT AWAY FROM RUNNING WATER.

DO NOT SPLASH THE CONTROL HOUSING! DO NOT SPLASH THE CONDUIT CONNECTING THE TOP AND BOTTOM OF THE TOASTER!



CAUTION

BEFORE CLEANING, MAKE SURE POWER IS TURNED OFF AND THE UNIT IS UNPLUGGED.

To remove burned on grease or food residue, use the following mixture:

1 Tablespoon liquid dish detergent

1 Cup of warm water

While holding the top lid with one hand, apply this mixture to a cold or warm top cooking surface with a sponge or plastic scrubbing pad. Wipe with a clean sponge or towel until the unit is clean.

Empty and clean the grease catcher tray as required using detergent and water (after removing the tray from the unit).

INTERNATIONAL ONE (1) YEAR EQUIPMENT WARRANTY

All workmanship and materials in “**STAR**” products are warranted for a period of one year from the date shipped from the factory or one year from the date shown on the proof of purchase of the end-user when purchased through an authorized “**STAR**” dealer/distributor in a commercial foodservice location.

“**STAR**’s” obligation under this warranty is limited to the replacement of the defective part(s) only without charge. This warranty is void if damage occurs from improper installation, misuse or abuse, disassembly or tampering of unit for any purpose other than repair by a qualified service agent, wrong voltage, incorrect or fluctuating voltage conditions, wrong gas, improper gas or gas conditions, operated contrary to the installation and operating instructions, operated in an application for which the unit is not suited, or if the unit is not maintained and/or cleaned in a suitable manner.

Any expense in connection with installation, or any cost of making adjustments on a unit to conform to electric or gas service at the point of installation, are not covered by this warranty.

- * The warranty period for the JetStar series six (6) ounce popcorn machines is two (2) years.
- * The warranty period for the Chrome-Max Griddles is five (5) years on the griddle surface. See detailed warranty provided with unit.
- * The warranty period for Teflon/Dura-Tec coatings is one year under normal use and reasonable care. This warranty does not apply if damage occurs to Teflon/Dura-Tec coatings from improper cleaning, maintenance, use of metallic utensils, or abrasive cleaners. This warranty does not apply to the “non-stick” properties of such materials.
- * This warranty is not valid on Conveyor Ovens unless a “start-up/check-out has been performed by a Factory Authorized Technician.

In order to make a claim under this warranty; a warranty report must be filed with Star Manufacturing International Inc. in St. Louis, Missouri, U.S.A. by the dealer/distributor through which product was purchased. All details, including serial number and model number of the defective unit, must be included. Failure to file a claim within a 120 Day time period may result in the claim being refused.

“**STAR**” may forego the necessity of returning the part for inspection dependent upon the expense involved. However, “**STAR**” requires defective parts to be held in the claimant’s possession for a period of ninety (90) days for possible inspection by a “**STAR**” representative or designated inspector .

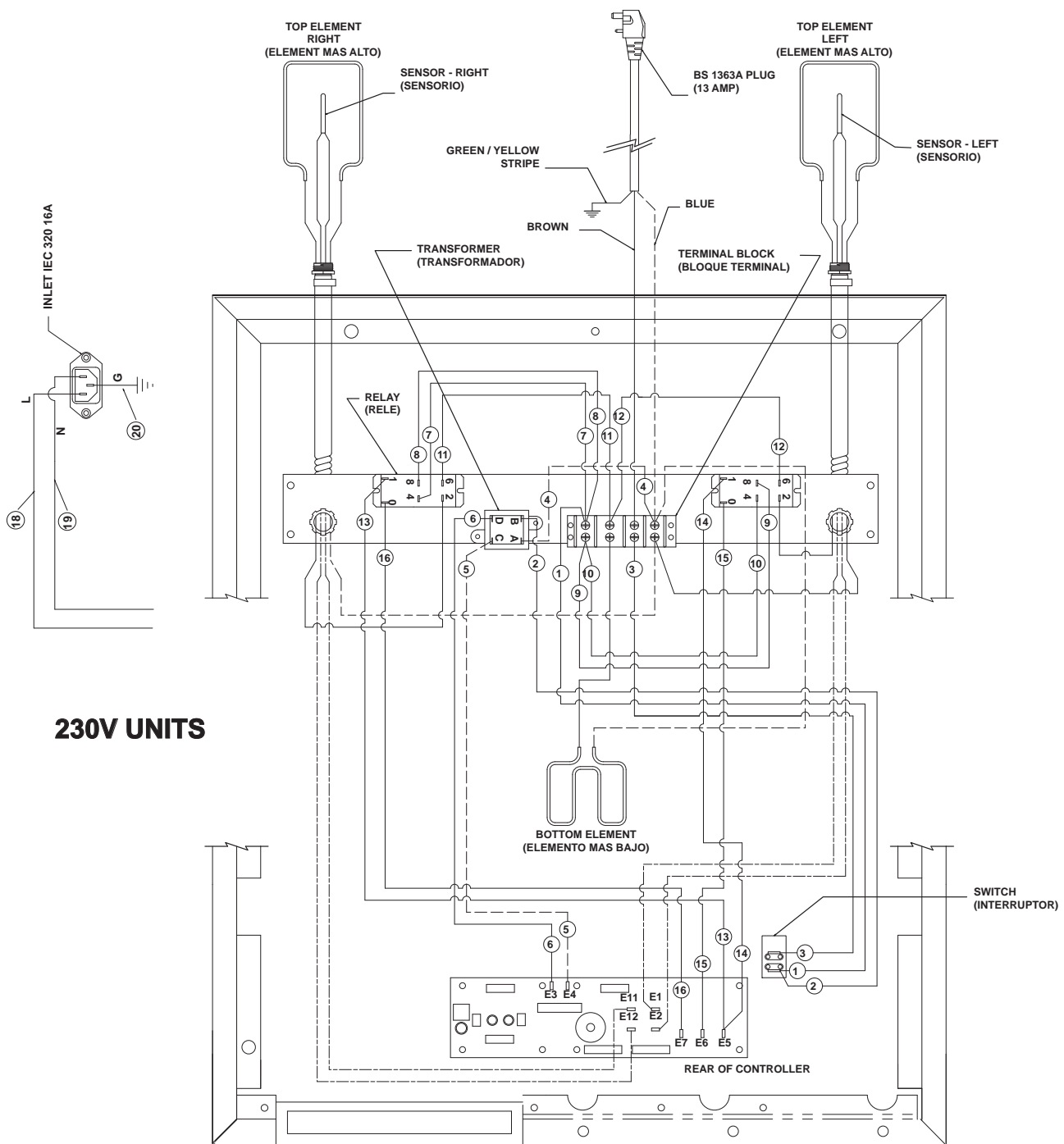
The foregoing warranty is lieu of any and all other warranties, expressed or implied, and constitutes the entire warranty.

PARTS WARRANTY

Parts that are sold for out-of-warranty repair are warranted for a period of ninety days. The part only is warranted; no labor.

SERVICES NOT COVERED BY WARRANTY

1. Labor
2. Mileage and/or travel time
3. Installation and/or adjustment of equipment
4. Operation contrary to the installation and operating instructions
5. Cleaning of equipment
6. Seasoning of griddle plates
7. Voltage conversions/adjustments
8. Gas conversions
9. Pilot light conversion/adjustments
10. Thermostat calibration/adjustments
11. Resetting of circuit breakers or safety controls
12. Replacement of bulbs/lamps
13. Replacement of fuses
14. Damages due to improper installation
15. Damages from abuse or misuse
16. Damage created by acts of God, Acts of War, or Civil Disturbance



230V UNITS

FOR REFERENCE

**WIRING DIAGRAM IS SHOWN AS UNIT IS ASSEMBLED
WITH THE BOTTOM PLATE REMOVED. THE TOP DESCRIPTIONS ARE THEIR POSITIONS WHEN UPRIGHT.**

**WIRE DIAGRAM, 230V, 2300 WATT
(2J-Z6323 CONTROLLER ONLY)**

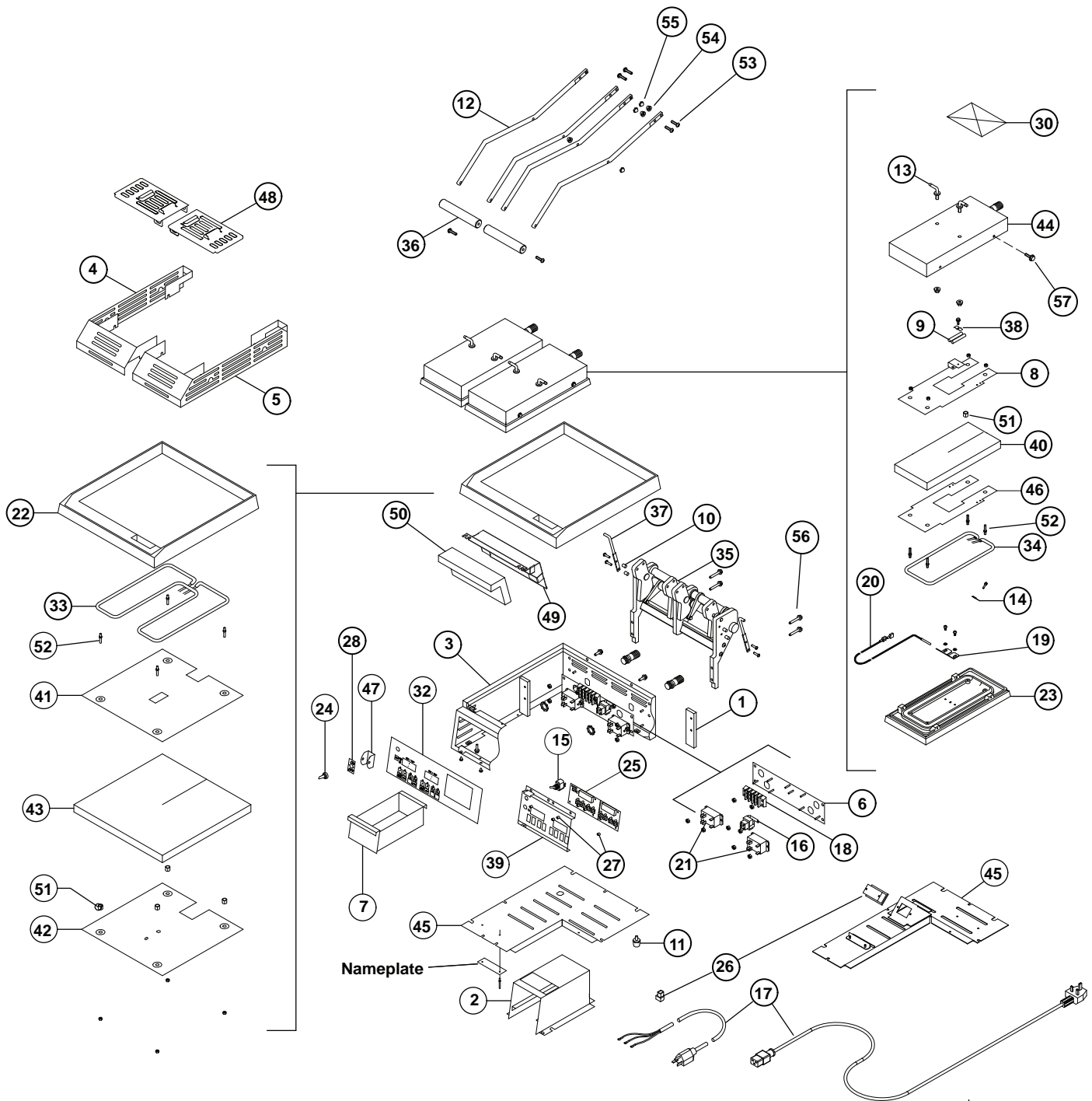
SOME ITEMS ARE INCLUDED FOR
ILLUSTRATIVE PURPOSES ONLY AND IN
CERTAIN INSTANCES MAY NOT BE AVAILABLE

MODEL: GR14SPTA-UK-230V, 2300 WATT

THIS DRAWING CONTAINS INFORMATION CONFIDENTIAL TO STAR MFG. INT'L. INC.
NO REPRODUCTION OR DISCLOSURE OF ITS CONTENTS IS PERMITTED.



STAR MANUFACTURING INTERNATIONAL INC.
SK2017 Rev A 08/10/2004



SOME ITEMS ARE INCLUDED FOR
ILLUSTRATIVE PURPOSES ONLY AND IN
CERTAIN INSTANCES MAY NOT BE AVAILABLE

MODEL - GR14SPT



STAR MANUFACTURING INTERNATIONAL, INC.

SK1750

REV. E

3/22/06

PARTS LIST

November 18, 2009, Rev. F

MODEL GR14SPTA-UK Split Lid Table Top Two Sided Toaster

Key Number	Part Number	Number Per Unit	Description
1	2A-Z6484	2	PLATE (COUNTER BALANCE MOUNT)
2	D9-GR0150	1	GREASE CABINET ASSEMBLY
3	D9-GR0152	1	BODY ASSEMBLY
4	D9-GR0177	1	BURN GUARD ASSEMBLY - LEFT
5	D9-GR0176	1	BURN GUARD ASSEMBLY - RIGHT
6	D9-GR0156	1	REAR PLATE ASSEMBLY
7	D9-GR0518	1	GREASE DRAWER ASSEMBLY
8	D9-GR0182	2	TOP RETAINING PLATE ASSEMBLY
9			PART OF ITEM #34
10	2A-Y6142	4	SLEEVE HANDLE
11	2A-Z11501	4	FOOT 1" SOLID RUBBER
12	2B-Z3336	4	14" GR14SPT ARM
13	2C-Z3200	4	PIN - TOP HOUSING
14	2C-Z3350	2	HALF CLAMP - .188 DIAMETER
15	2E-Z3808	1	SWITCH TOGGLE
16	2E-05-07-0350	1	TRANSFORMER 230V/10V 6VA
17	2E-Z9192	1	CORDSET (DETACHABLE) - UK
18	2E-Z2894	1	TERMINAL BLOCK (304)
19	D9-Z3903	2	BRACKET, PROBE MOUNT
20	2E-Z3278	2	RTD PROBE - 48" LONG WIRE
21	2E-Z3335	2	RELAY DOUBLE POLE - SINGLE THREAD
22	PS-GR0361	1	KIT, 2F-Z1945 CASTING - SMOOTH BOTTOM, ALUMINUM
23	PS-GR0356	2	KIT, 2F-Z3237 CASTING - TOP
24	2I-05-07-0013	1	BOOT SWITCH
25	2J-Z6323	1	TIME/TEMPERATURE CONTROL
26	2E-Y9253	1	IEC INLET 16 AMP
27	2K-Z1971	14	SPACER
28	2M-12-07-0038	1	LABEL ON & OFF
30	2M-Z2620	2	LABEL CAUTION, BI-LINGUAL
32	2M-Z5817	1	OVERLAY
33	2N-Z9327	1	ELEMENT, HEATING, 1300 W
34	PS-Z9326	2	ELEMENT, HEATING, TOP 500W
35	2R-Z3345	1	COUNTERBALANCE - SPLIT TOP
36	2V-Z3152	2	HANDLE - TACO BELL 2
37	2V-Z3252	2	TOP HOUSING LATCH ROD
38	B9-04-WB-0046	2	CLAMP WIRE SUPPORT
39	D9-GR0151	1	FACEPLATE ASSEMBLY
40	D9-Z2133	2	INSULATION FIBERGLASS TOP
41	D9-Z2618	1	BOTTOM ELEMENT RETAINING PLATE
42	D9-Z2619	1	BOTTOM INSULATION RETAINING PLATE
43	D9-Z2888	1	INSULATION - 14"
44	D9-GR0181	2	TOP HOUSING AND CONDUIT ASSEMBLY
45	D9-GR0249	1	BASE BOTTOM ASSY 14SPT 230V w/ IEC
46	D9-Z3902	2	PLATE - TOP ELEMENT RET.
47	Z1-70-07-0343	1	SWITCH GUARD
48	D9-GR0189	2	TOP BURN GUARD ASSEMBLY

**IMPORTANT: WHEN ORDERING, SPECIFY VOLTAGE OR TYPE GAS DESIRED
INCLUDE MODEL AND SERIAL NUMBER**

PAGE 1
OF 2

Some items are included for illustrative purposes only and in certain instances may not be available.



Star Manufacturing International, Inc.

PARTS LIST

November 18, 2009, Rev. F

MODEL GR14SPTA-UK Split Lid Table Top Two Sided Toaster

Key Number	Part Number	Number Per Unit	Description
49	D9-GR0183	1	INSULATION BAFFLE ASSEMBLY
50	D9-Z3826	1	INSULATION - BAFFLE
51	2A-Z6604	12	SPACER - INSULATION PLATE
52	2C-07-07-0285	12	SCREW 10-24X3/4X3/8 TYPE 2 HEX DBL END STL
53	2C-Z2992	8	BOLT 1/4-20X1 PHP STL NP
54	2C-08-07-0262	8	WASHER 1/4 INT STL NP
55	2C-08-07-0040	8	NUT 1/4-20 ACHD STL NP
56	2C-Z2593	4	BOLT, 10-24x1 1/2 SL HX/W NP
57	2C-Z5883	8	SCREW, 10-24 X 1/2 FZA, SELF DRILLING
<p>IMPORTANT: WHEN ORDERING, SPECIFY VOLTAGE OR TYPE GAS DESIRED INCLUDE MODEL AND SERIAL NUMBER</p> <p>PAGE <u>2</u> OF <u>2</u></p> <p>Some items are included for illustrative purposes only and in certain instances may not be available.</p>			



Star Manufacturing International, Inc.

STAR MANUFACTURING GROUP
Star - Holman - Lang - Wells - Bloomfield - Toastmaster
10 Sunnen Drive, St. Louis, MO 63143 U.S.A.
(800) 807-9054 (314) 781-2777
Parts & Service (800) 807-9054
www.star-mfg.com